



# MONTGOMERY COUNTY

Council's Summer Fellows Program

**Summer 2022:** June 6, 2022–August 12, 2022

# Why Be a Fellow?

The Montgomery County Council's 10-week Summer Fellows Program is a unique opportunity that enables policy-focused graduate students to gain real-world local government experience across multiple sectors and issue areas.

The program is a collaboration among 4 independent organizations:

- [Montgomery County Council](#)
- [Office of Legislative Oversight](#)
- [Montgomery County Economic Development Corporation](#)
- [Montgomery County Executive Branch](#)

The alliance provides multiple points of access to innovative leaders who are shaping the future of Montgomery County in new and exciting ways. It also enables participants to build an experience that is specifically tailored to their field of study.



**Direct Interactions:** Summer Fellows will work directly with decision makers on ongoing projects and policy analyses in a variety of policy fields. Participants can expect to interact with elected officials, senior management staff and, depending on placement, local civic organizations, advocacy groups and business leaders.



**Real Impacts:** Our Fellows will also have the opportunity to write and present on a self-selected research project to the County Council. Councilmembers have used the policy analyses and recommendations from the reports to directly impact local and state legislation and policy-decisions.



**Skill Development:** Summer Fellows will have the opportunity to develop a variety of skills including writing, quantitative and qualitative research, project management, data analysis, implementation review, process development, public speaking, presentations and more.



**Exploration:** The Fellows also participate in field trips throughout the summer where they learn about some of the County's most innovative programs and meet inspirational leaders.



**Compensation:** An \$8,000 stipend for the 10-week program.



**Check out our [webpage](#) to watch short-videos highlighting the experiences of our past cohorts!**





## About Montgomery County, MD

Montgomery County, MD is one of the most **diverse** and **well-educated counties in the U.S.**, home to over **1.1 million people** and **4 of the most diverse cities in the nation**. While we neighbor bustling **Washington D.C.**, our geographic diversity is extensive too with urban cities, suburban and urban neighborhoods, and a **93,000-acre Agricultural Reserve** filled with rural farmland. The County is also the **epicenter for biotechnology in the Mid-Atlantic region** with the nation's **third largest biotechnology cluster**. Due to the proximity to our nation's capital, the County also **hosts several federal agencies** such as the National Institutes of Health (NIH), the National Institute of Standards and Technology (NIST), and the Food and Drug Administration (FDA). Montgomery County Public Schools is continually ranked among the **top performing school districts in the country** and Montgomery Community College has been ranked as the **best 2-year college in the state**. Visit this [webpage](#) to learn more about our County.

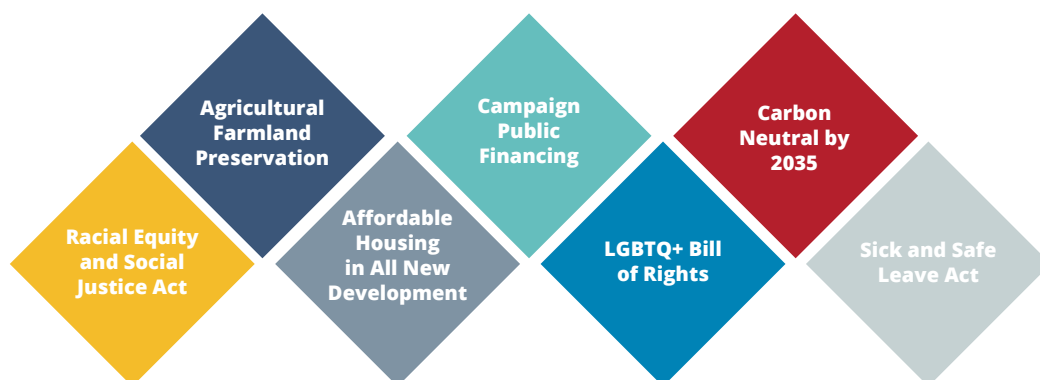


You will be able to explore the County and Washington, D.C. region through weekly field trips!

## Council Members

As part of the Washington metropolitan area, Montgomery County, Maryland has one of the nation's most progressive governments. Many programs and local laws originally implemented in Montgomery County have served as models for other jurisdictions.

### Montgomery County Programs



Visit our [homepage](#) for more information on the County Council.



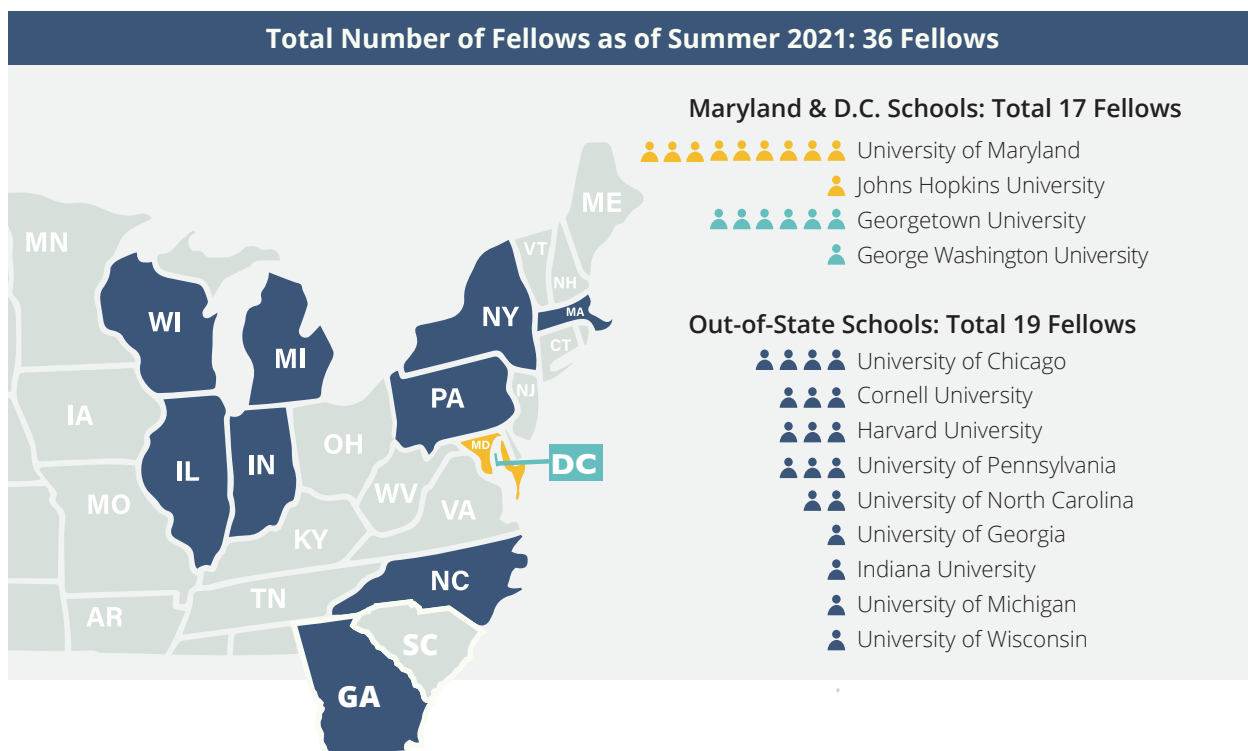
Weekly meetings with Councilmembers, Council staff, and community leaders allows you the opportunity to ask important questions directly to the decision makers!

### Montgomery County Councilmembers



## About Our Cohorts

Our program brings in graduate students from the Washington, D.C. area and beyond with a majority of our Fellows coming from schools outside of the D.C. region. Graduate students studying public policy, public administration/affairs, public health, planning, law or related fields are invited to apply.



### Independent Research Projects

Typically, Fellows work on a mix of short-term and long-term policy analysis focused projects throughout the summer. However, a key part of our Summer Fellows program is the opportunity for each Fellow to self-select a research paper topic to write and present to the Montgomery County Council. These reports have served as the basis for real policy actions implemented in the County and State.

The collection of reports can be found on our [website](#).

Check out some of the broad topics selected by our prior Fellows below.

### General reaserch topics by our cohorts

- Educational Equity
- Racial Equity & Social Justice
- Pay and Wage Analysis
- Senior Care
- Criminal Justice
- Transportation
- Environment
- Affordable Housing
- County Growth Policies
- Health and Human Services



# Eligibility Criteria

## Ideal Candidates:

- Are enthusiastic to learn about local government
- Demonstrate innovative ideas and approaches to policy problems
- Embody strong interpersonal skills and collaborative mindsets
- Are eager to make a real impact on Montgomery County, MD residents and businesses
- Desire the opportunity for skill development

All levels of work experience and backgrounds are invited to apply!

## Candidates must:

- Be current graduate level students (Masters or PhD programs)
- Have completed at least their first year of study by the program start date
- Study public policy, public administration/affairs, public health, planning, law, or related fields
- Have a cumulative GPA of at least 3.0 on a 4.0 scale
- Live in the Washington, D.C. region during the fellowship period (telework agreements may be discussed on an individual basis with their supervisor, in-person hours still expected)

## 2021 Summer Fellows



# Selection Process

**Stage 1:** All Prospective Fellows must submit the requested preliminary information at <https://mcgmd.wufoo.com/forms/summer-fellows-program-2022/>

**Current Deadline:** December 12, 2021 11:59pm EST (check the website for updates)

**Stage 2:** Only notified applicants selected for Stage 2 must submit the following

- Two reference letters (at least one graduate professor/supervisor is preferred)
- First semester graduate school transcript, when available
- A writing sample (5–10 pages)
- Responses to the following four questions
  - Your interest in the program
  - Applicable skills/attributes for the program
  - A policy analysis approach to a selected topic from a pre-determined list; and
  - An example of a work/school assignment that could be of interest to a local government.

More details will be provided in the official Stage 2 application materials sent to selected applicants.

**Tentative Deadline:** mid-January 2022 (updates will be provided directly to selected applicants)

**Stage 3:** The most qualified applicants will be interviewed in-person or via a virtual-video program.

**Tentative Interview Period:** February 2022 (updates will be provided directly to Stage 3 applicants)

**Selection:** All applicants will be notified of their status and selection by March 2022 at the latest.

## General Information

**Where:** Rockville, Maryland | 30 minutes from the nation's capital

- County Office Buildings: 10 minute walk from the Rockville Metro Station and Wheaton Metro Station
- MCEDC: 5 minute walk from the Twinbrook Metro Station

**When:** June 6, 2022–August 12, 2022

- Full-time, Monday–Friday, 40 hours/week

**Compensation:** An \$8,000 stipend for the 10-week program

**Housing Assistance:** Relocation is at the applicant's expense. Please let us know if you are experiencing issues with securing housing and we will be happy to help.

Washington, D.C. Area Housing

<https://www.facebook.com/groups/1468086266815937/>

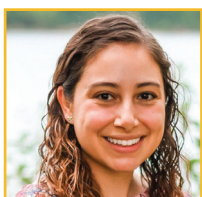
<https://www.facebook.com/groups/arlingtonfairfaxrentals/>

<https://www.facebook.com/groups/435149516994150/>

University of Maryland Office of Off-Campus Housing

<https://och.umd.edu/>

### Contact Information:



**Nicole Rodriguez-Hernandez | Pronouns: She/Her/Her**

2017 Summer Fellow

Legislative Analyst | Montgomery County Council

[Nicole.Rodriguez@montgomerycountymd.gov](mailto:Nicole.Rodriguez@montgomerycountymd.gov)



**Pamela Dunn | Pronouns: She/Her/Her**

Senior Legislative Analyst | Montgomery County Council

[Pamela.Dunn@montgomerycountymd.gov](mailto:Pamela.Dunn@montgomerycountymd.gov)



### Links:

[Summer Fellows Website](#)

[Stage 1 Application](#)





[www.montgomerycountymd.gov](http://www.montgomerycountymd.gov)

Summer Fellows Website | Stage 1 Application