



## **Tamarack Triangle Civic Association**

November 16, 2021

County Council President & Councilmembers  
Montgomery County Council  
100 Maryland Avenue  
Rockville, MD 20850

Subject: Redistricting Commission's Map Recommendation

Dear County Council President Hucker & Councilmembers,

I would like to take this opportunity to thank the Montgomery County Redistricting Commission for the difficult work done by them, for their commitment, and their effort to deliver a product in the time constraints given them. Though they could not come to a unanimous decision on the map selected for presentation to the County Council, the fact is that they did come up with a viable product favorably voted on by the majority of the commissioners. The map selected was the best of the three maps presented in terms of meeting all of the criteria used to draft the maps.

After review of the map by the community, several members have raised some concerns and provided the following comments for your consideration when approving the final form of the redistricting map:

- Concern of having two of the largest senior housing complexes in the same district.
- Concern of Four Corners whose interests have historically aligned more closely with the Silver Spring area below the beltway (I-495) than that north of the Northwest stream valley.
- That the concerns of Hillandale and surrounding areas align more organically with the Northwest Park and Oakview communities from transportation perspectives and community.
- Some citizens who live in areas covered by the precincts immediately east and south of the Leisure World area feel that they are more aligned with the district map referenced in this discussion in their concerns and issues.

With these four major concerns in mind, we took to tweaking the Redistricting Commission selected map to try to align the four concerns into the map and we provide you the following for consideration in your deliberations for selection of the redistricting map that will be used for the next ten years. We did this in small group meeting and two virtual sessions, the last of which occurred last evening.

Below we provide you two alternatives in addition to the Commission selected map. As with the Commission, we gathered the population, race, and age 18+ data from that listed for each precinct in the maps below directly for the Redistricting Commission's web-posted interactive map.

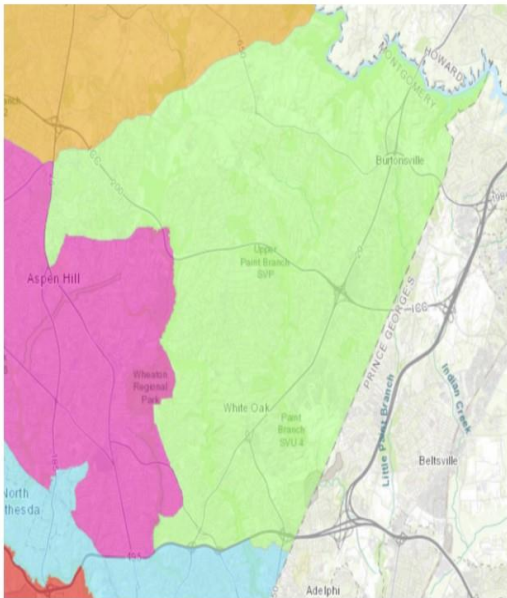
Of importance for you to note, is that this effort was an "East County" centric view and due to time limitations and with no easy access to the entire precinct data set, we were left with having to scrape the precinct data individually for each precinct from the Redistricting Commission's interactive map. We did not include in our consideration the cascading effect of what these precinct tweaks would have on the other proposed districts – though we believe it to be minimal and that we did preserve the Commission's decision to have majority vote sectors for both the Black and Latino votes in their 'respective' districts. (See Addendum attached)

After much discussion, the Tamarack Triangle Civic Association selected the "Discussion Adjusted Map 2" as the one that meets all of the criteria for development of the redistricting map. We therefore request the County Council to seriously take our recommendation to adopt our proposed "Discussion Adjusted Map 2" for replacement of the Commission select map, but if that is not possible to have you consider the critical concerns we have and incorporate those into the map the County Council selects.

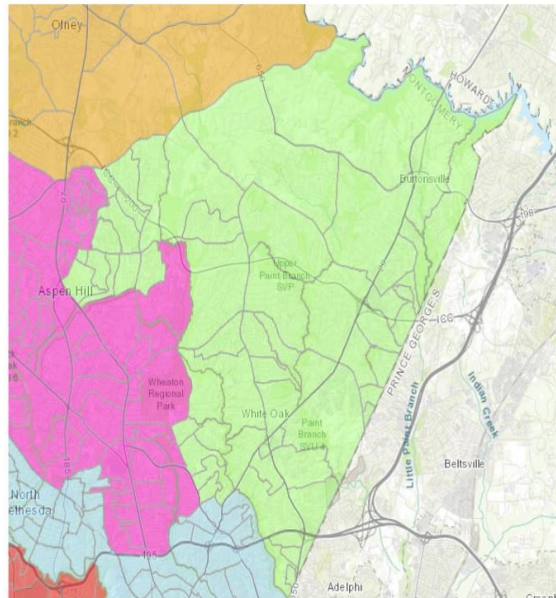
Sincerely,  
Peter Myo Khin  
President, Tamarack Triangle Civic Association

## Addendum I

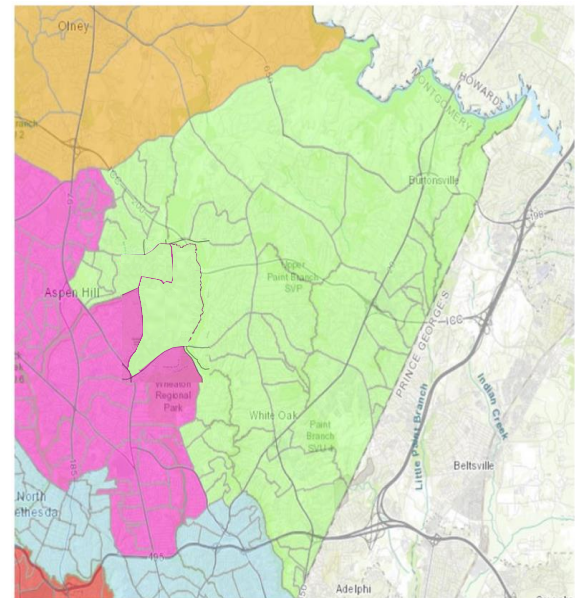
**Redistricting Commission Submitted Map**



**Discussion Adjusted Map 1**



**Discussion Adjusted Map 2**



# Addendum II

Montgomery County Redistricting Commission Proposed Map																																				
Precinct	13-064	13-011	13-054	13-063	13-061	13-043	05-016	05-015	05-018	05-003	05-001	05-013	05-023	05-002	05-021	05-017	05-012	05-004	05-013	05-006	05-008	05-011	05-022	13-026	13-033	13-011	05-005	05-010	05-003	13-023	13-019	TOTALS				
Total Population	1,833	2,186	2,753	2,522	1,750	2,169	4,136	4,851	2,339	5,035	5,090	4,338	6,325	5,581	6,034	5,145	7,507	2,532	3,864	6,269	4,730	3,732	2,048	2,789	3,031	4,721	4,404	4,220	6,868	6,331	143,853					
Asian Pl	431	960	285	130	1,031	335	641	365	363	364	778	320	1,376	545	589	858	1,232	212	439	993	663	539	272	81	100	469	360	236	875	849	17,650					
Black	2,395	245	405	701	2,646	1,095	1,024	939	368	1,452	1,571	1,093	4,631	3,622	5,437	2,180	3,273	320	6,191	2,595	1,498	1,267	361	124	432	896	1,026	2,519	2,142	240	317	54,247				
Hispanic	3,490	34	156	127	1,500	626	196	740	419	628	1,903	964	379	765	1,242	175	1,268	190	2,390	1,198	870	876	362	199	487	1,361	892	641	2,076	306	552	27,230				
Other	724	73	54	43	433	118	239	305	385	259	363	190	341	246	282	297	281	61	301	396	220	180	107	152	195	280	179	89	249	229	227	7,462				
White	661	1,614	1,873	1,843	2,032	605	1,616	1,848	1,024	1,732	1,289	1,555	938	683	484	1,097	1,253	1,021	483	1,247	1,067	870	506	2,233	1,727	1,805	1,127	655	1,526	2,629	1,761	41,548				
Total Population 18+	5,662	2,129	2,750	2,437	6,192	2,271	3,341	3,855	1,935	4,073	3,351	3,585	6,205	4,561	5,666	4,090	5,683	2,029	7,010	4,907	3,392	2,996	1,675	1,906	2,194	3,591	3,451	3,389	5,388	4,395	103,980					
Asian Pl 18+	353	159	285	130	886	275	557	307	300	351	660	194	1,109	474	470	737	1,046	195	411	823	552	445	223	71	113	391	395	172	740	663	14,444					
Black 18+	1,360	242	403	505	2,032	875	857	764	250	1,141	1,039	842	3,349	2,735	3,767	1,593	2,418	638	4,416	1,888	1,174	1,096	298	97	419	656	1,429	1,898	1,687	174	255	40,717				
Hispanic 18+	2,294	81	141	118	1,102	459	365	513	277	427	1,792	408	684	542	817	560	324	85	1,554	863	618	621	260	127	366	965	636	461	1,465	210	398	13,134				
Other 18+	111	53	44	41	319	88	177	187	183	173	215	145	266	193	178	209	181	44	210	228	146	125	84	91	132	152	108	125	162	195	113	4,884				
White 18+	353	1,605	1,873	1,843	2,173	574	1,385	1,584	987	1,475	1,141	1,336	818	627	434	891	1,124	1,071	422	1,095	901	789	870	1,520	1,164	1,427	963	533	1,334	1,774	29,739					
ADJUSTED Discussion Map 1 - Montgomery County Redistricting Commission Proposed Map																																				
Precinct	13-055	13-056	13-061	13-043	05-016	05-015	05-018	05-003	05-001	05-013	05-023	05-002	05-021	05-017	05-012	05-004	05-013	05-006	05-008	05-011	05-022	13-026	13-033	13-011	05-005	05-010	05-003	05-014	TOTALS							
Total Population	5,122	6,698	1,750	2,169	4,136	4,851	2,339	5,035	5,090	4,338	6,325	5,581	6,034	5,145	7,507	2,532	3,864	6,269	4,730	3,732	2,048	2,789	3,031	4,721	4,404	4,220	6,868	6,331	143,853							
Asian Pl	250	617	1,031	335	641	365	363	364	778	320	1,376	545	589	858	1,232	212	439	993	663	539	272	81	100	469	360	236	875	849	17,650							
Black	1,711	1,772	2,646	1,095	1,024	939	368	1,452	1,571	1,093	4,631	3,622	5,437	2,180	3,273	320	6,191	2,595	1,498	1,267	361	124	432	896	1,026	2,519	2,142	1,247	54,064							
Hispanic	2,372	2,520	1,509	626	196	740	419	628	1,903	964	379	765	1,242	175	1,268	190	2,390	1,198	870	876	362	199	487	1,361	892	641	2,076	306	552	27,230						
Other	357	323	433	118	239	305	385	259	363	190	341	246	282	297	281	61	301	396	220	180	107	152	195	280	179	89	249	229	227	7,462						
White	432	1,386	2,032	605	1,616	1,848	1,024	1,732	1,289	1,555	938	683	484	1,097	1,253	1,021	483	1,247	1,067	870	506	2,233	1,727	1,805	1,127	655	1,526	2,629	1,761	41,548						
Total Population 18+	3,611	4,885	6,192	2,271	3,341	3,855	1,935	4,073	3,351	3,585	6,205	4,561	5,666	4,090	5,683	2,029	7,010	4,907	3,392	2,996	1,675	1,906	2,194	3,591	3,451	3,389	5,388	4,395	103,980							
Asian Pl 18+	275	571	886	275	557	307	300	351	660	194	1,109	474	470	737	1,046	195	411	823	552	445	223	71	113	391	395	172	740	663	14,444							
Black 18+	1,260	1,584	2,032	875	857	764	250	1,141	1,139	842	3,349	2,735	3,767	1,593	2,418	638	4,416	1,888	1,174	1,096	298	97	419	656	1,429	1,898	1,687	883	40,365							
Hispanic 18+	1,595	1,681	1,102	459	365	513	277	427	1,792	408	684	542	817	560	324	85	1,554	863	618	621	260	127	366	965	636	461	1,465	2,482	21,583							
Other 18+	221	248	319	88	177	187	183	173	215	145	266	193	178	209	181	44	210	228	146	125	84	91	132	152	108	125	162	195	113	4,884						
White 18+	360	1,811	1,773	574	1,385	1,584	987	1,475	1,141	1,336	818	627	434	891	1,124	1,071	422	1,095	901	789	870	1,520	1,164	1,427	963	533	1,334	1,774	29,739							
ADJUSTED Discussion Map 2 - Montgomery County Redistricting Commission Proposed Map																																				
Precinct	13-002	13-055	13-056	13-061	13-043	05-016	05-015	05-018	05-003	05-001	05-013	05-023	05-002	05-021	05-017	05-012	05-004	05-013	05-006	05-008	05-011	05-022	13-026	13-033	13-011	05-005	05-010	05-003	05-014	TOTALS						
Total Population	9,471	5,122	6,698	1,750	2,169	4,136	4,851	2,339	5,035	5,090	4,338	6,325	5,581	6,034	5,145	7,507	2,532	3,864	6,269	4,730	3,732	2,048	2,789	3,031	4,721	4,404	4,220	6,868	6,331	143,853						
Asian Pl	1,759	250	617	1,031	335	641	365	363	364	778	320	1,376	545	589	858	1,232	212	439	993	663	539	272	81	100	469	360	236	875	849	17,650						
Black	3,196	1,711	1,772	2,646	1,095	1,024	939	368	1,452	1,571	1,093	4,631	3,622	5,437	2,180	3,273	320	6,191	2,595	1,498	1,267	361	124	432	896	1,026	2,519	2,142	1,247	54,064						
Hispanic	2,076	2,372	2,520	1,509	626	196	740	419	628	1,903	964	379	765	1,242	175	1,268	190	2,390	1,198	870	876	362	199	487	1,361	892	641	2,076	306	552	27,230					
Other	562	357	323	433	118	239	305	385	259	363	190	341	246	282	297	281	61	301	396	220	180	107	152	195	280	179	89	249	229	227	7,462					
White	2,088	432	1,386	2,032	605	1,616	1,848	1,024	1,732	1,289	1,555	938	683	484	1,097	1,253	1,021	483	1,247	1,067	870	506	2,233	1,727	1,805	1,127	655	1,526	2,629	1,761	41,548					
Total Population 18+	7,237	3,611	4,885	6,192	2,271	3,341	3,855	1,935	4,073	3,351	3,585	6,205	4,561	5,666	4,090	5,683	2,029	7,010	4,907	3,392	2,996	1,675	1,906	2,194	3,591	3,451	3,389	5,388	4,395	103,980						
Asian Pl 18+	1,430	215	571	886	275	557	307	300	351	660	194	1,109	474	470	737	1,046	195	411	823	552	445	223	71	113	391	395	172	740	663	14,444						
Black 18+	2,217	1,260	1,584	2,032	875	857	764	250	1,141	1,139	842	3,349	2,735	3,767	1,593	2,418	638	4,416	1,888	1,174	1,096	298														