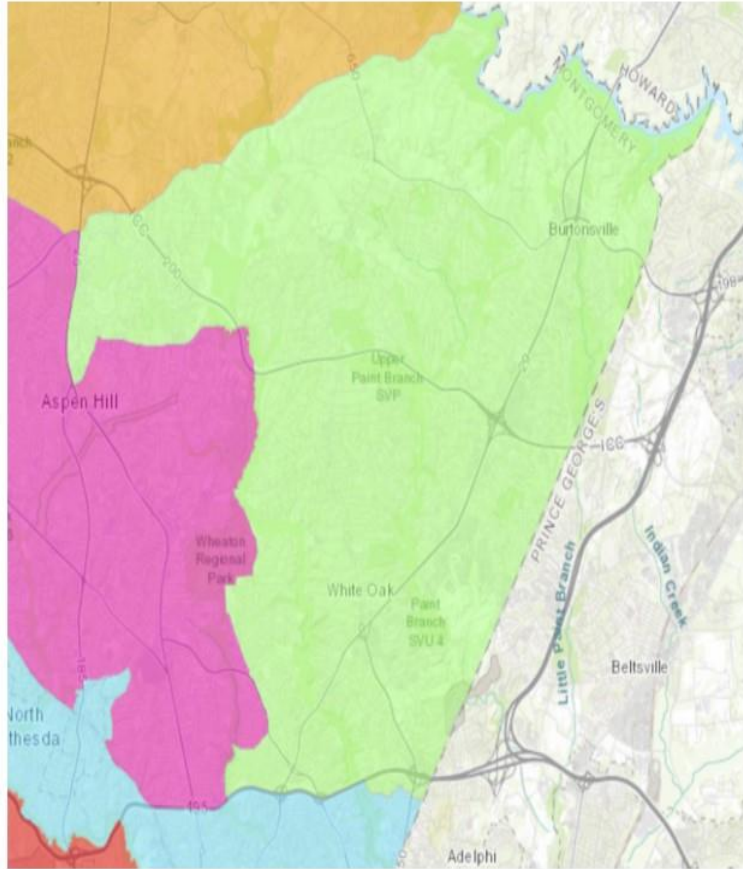
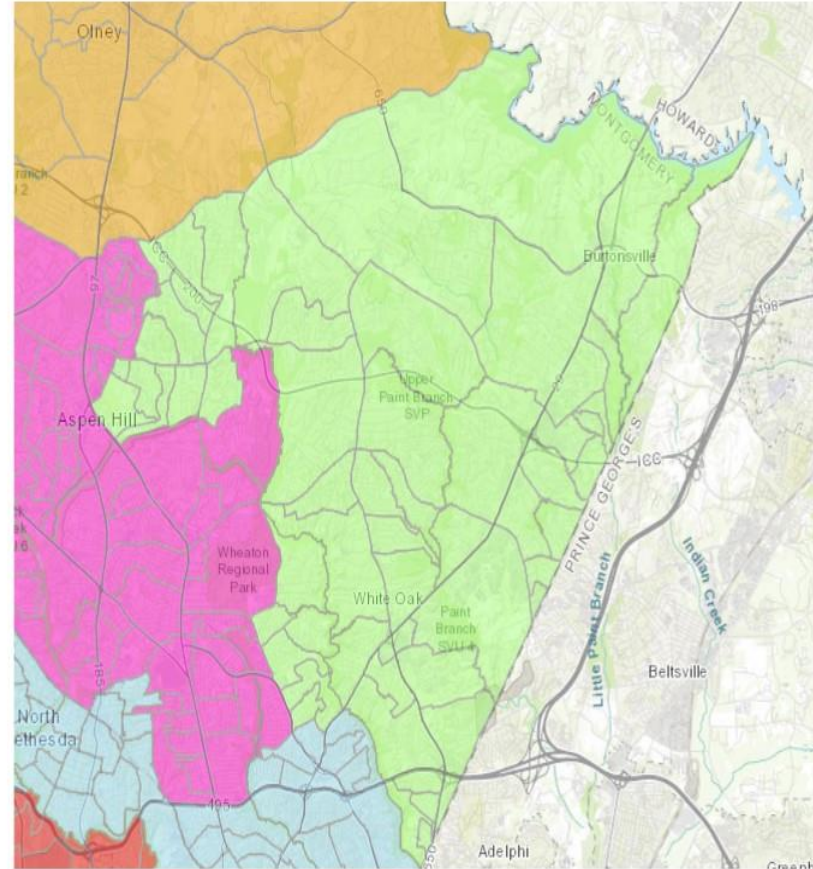


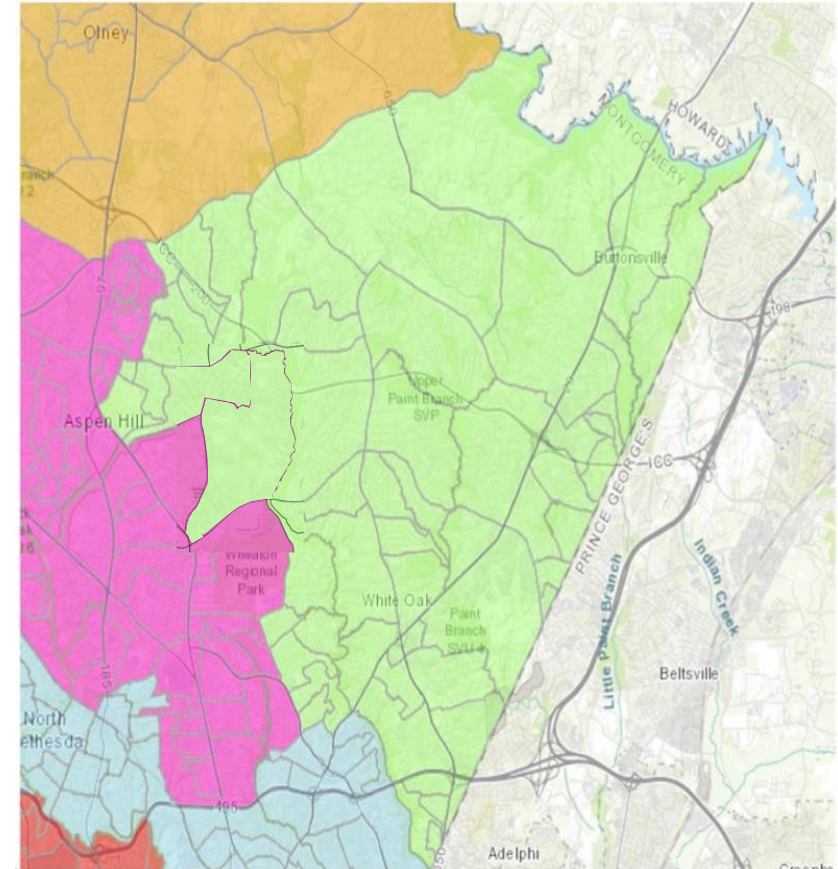
Redistricting Commission Submitted Map



Discussion Adjusted Map 1



Discussion Adjusted Map 2



Montgomery County Redistricting Commission Proposed Map

Table with 30 columns representing precincts (13-064 to 13-023) and 5 columns representing racial/ethnic groups (ASIAN PI, BLACK, HISPANIC, OTHER, WHITE). Rows include Total Population, Asian PI, Black, Hispanic, Other, White, Total Population 18+, Asian PI 18+, Black 18+, Hispanic 18+, Other 18+, and White 18+.

ADJUSTED Discussion Map 1 - Montgomery County Redistricting Commission Proposed Map

Table with 30 columns representing precincts (13-055 to 13-011) and 5 columns representing racial/ethnic groups. Rows include Total Population, Asian PI, Black, Hispanic, Other, White, Total Population 18+, Asian PI 18+, Black 18+, Hispanic 18+, Other 18+, and White 18+.

+ or - 5% of 150,000 provides for a population range ranging from 142,500 to 157,500

Summary table for ADJUSTED Discussion Map 1 showing Total Population 18+ and percentages for Asian PI 18+, Black 18+, Hispanic 18+, Other 18+, and White 18+.

ADJUSTED Discussion Map 2 - Montgomery County Redistricting Commission Proposed Map

Table with 30 columns representing precincts (13-002 to 13-011) and 5 columns representing racial/ethnic groups. Rows include Total Population, Asian PI, Black, Hispanic, Other, White, Total Population 18+, Asian PI 18+, Black 18+, Hispanic 18+, Other 18+, and White 18+.

+ or - 5% of 150,000 provides for a population range ranging from 142,500 to 157,500

Summary table for ADJUSTED Discussion Map 2 showing Total Population 18+ and percentages for Asian PI 18+, Black 18+, Hispanic 18+, Other 18+, and White 18+.

Summary comparison table showing Total Population, Asian PI, Black, Hispanic, Other, and White counts and percentages for Redistricting Commission, Adjusted Map 1, and Adjusted Map 2. Includes a note: + or - 5% of 150,000 provides for a population range ranging from 142,500 to 157,500.