

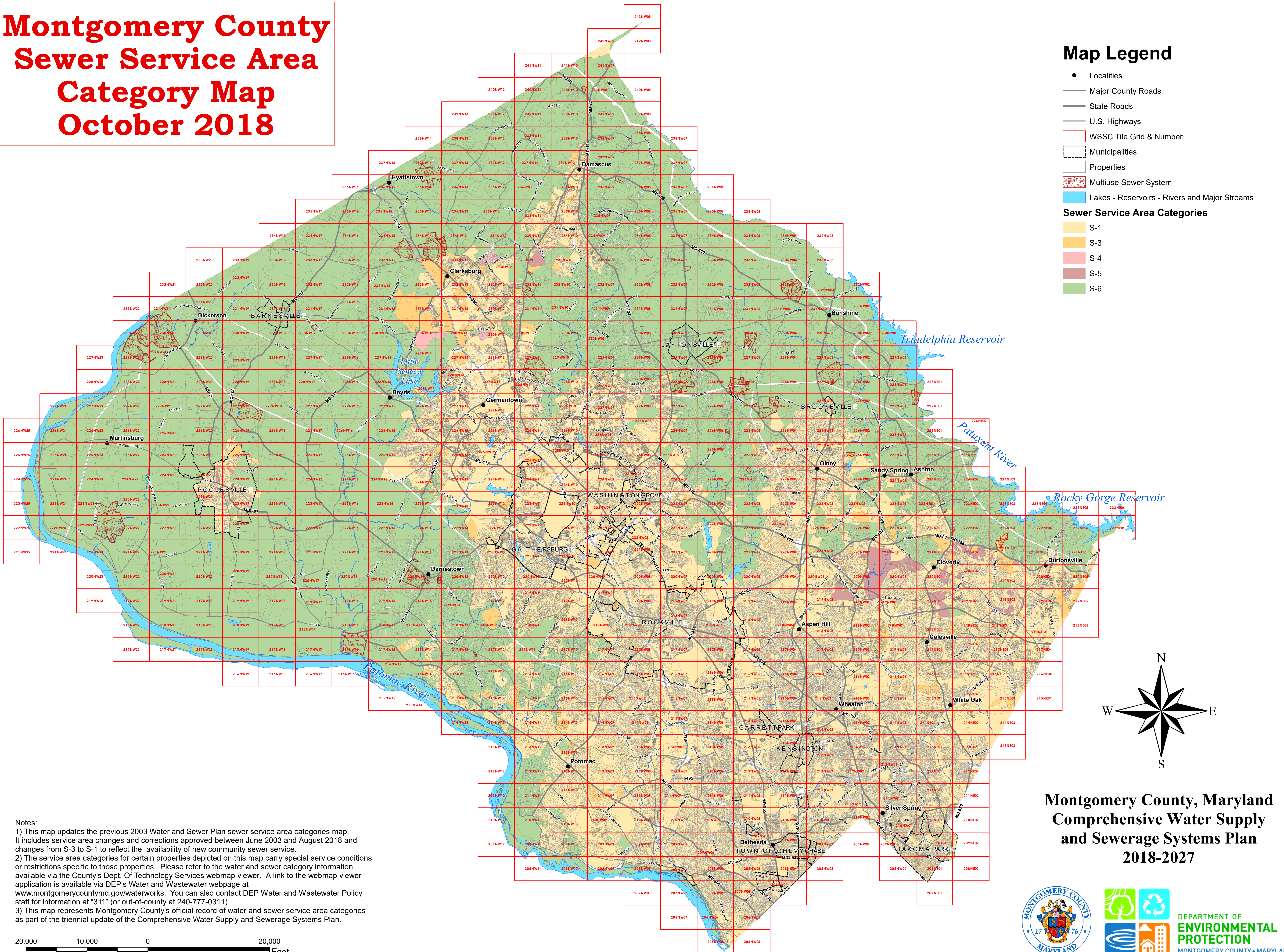
Montgomery County Sewer Service Area Category Map October 2018

Map Legend

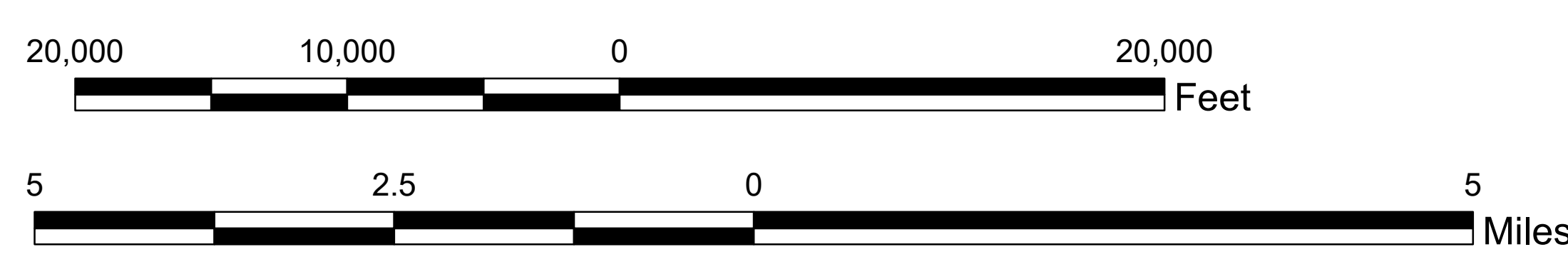
- Localities
- Major County Roads
- State Roads
- U.S. Highways
- ▭ WSSC Tile Grid & Number
- ▭ Municipalities
- ▭ Properties
- ▭ Multiuse Sewer System
- ▭ Lakes - Reservoirs - Rivers and Major Streams

Sewer Service Area Categories

- ▭ S-1
- ▭ S-3
- ▭ S-4
- ▭ S-5
- ▭ S-6



Notes:
 1) This map updates the previous 2003 Water and Sewer Plan sewer service area categories map. It includes service area changes and corrections approved between June 2003 and August 2018 and changes from S-3 to S-1 to reflect the availability of new community sewer service.
 2) The service area categories for certain properties depicted on this map carry special service conditions or restrictions specific to those properties. Please refer to the water and sewer category information available via the County's Dept. Of Technology Services webmap viewer. A link to the webmap viewer application is available via DEP's Water and Wastewater webpage at www.montgomerycountymd.gov/waterworks. You can also contact DEP Water and Wastewater Policy staff for information at "311" (or out-of-county at 240-777-0311).
 3) This map represents Montgomery County's official record of water and sewer service area categories as part of the triennial update of the Comprehensive Water Supply and Sewerage Systems Plan.



Montgomery County, Maryland Comprehensive Water Supply and Sewerage Systems Plan 2018-2027



Water & Wastewater Policy Group