



DEPARTMENT OF ENVIRONMENTAL PROTECTION

Marc Elrich
County Executive

Jon Monger
Director

August 20, 2025

Dear Resident,

This letter is to inform you about construction scheduled to begin in early **September, 2025** on the Germantown View Storm Water Pond project, located between Climbing Ivy Drive and Grotto Lane in the Seneca Forest community (see map on reverse side for project location). This project is being done by the Montgomery County Department of Environmental Protection to replace aging infrastructure and upgrade the pond which was originally constructed in the 1980's. Over the past forty years the pond has filled in with sediment and the metal riser structure and spillway pipe have corroded and are at risk of failure the longer they remain in place. This project will regrade the pond to increase water storage capacity, install a new concrete riser structure, slip line the two 48" corrugated metal pipes that convey water through the dam with high-density-polyethylene (HDPE) pipe, install a clay liner on the face of the dam for added safety and plant aquatic plants, shrubs and trees around the perimeter of the new pond. This effort is part of Montgomery County's ongoing commitment to improve water quality in our local streams and in Chesapeake Bay.

Construction access will be from the north side of Great Seneca Highway. Starting in September 2025, the initial construction work will involve staking out the Limits of Disturbance (LOD), installing the construction access road from Great Seneca Highway and installing the LOD fencing around the project area. Completion of the project is expected to be in **March 2026**.

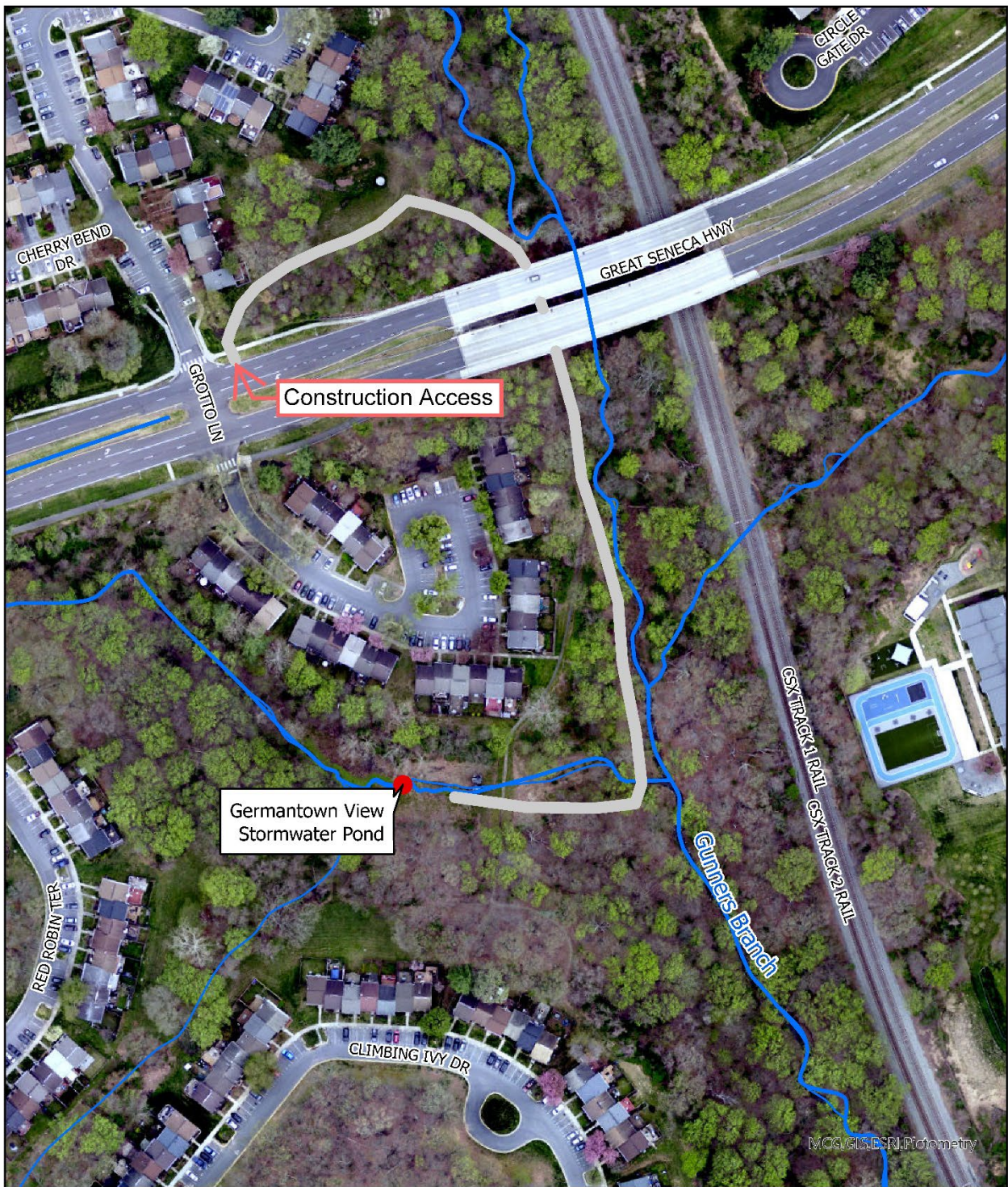
For more information, visit the project webpage at:
<https://www.montgomerycountymd.gov/DEP/water/clean-water-montgomery/watershed/restoration-projects/germantown-view.html>

If you have questions or concerns about this project, please contact Doug Marshall at douglas.marshall@montgomerycountymd.gov or 240-777-7767.

Sincerely,

Doug Marshall

Project Planner,
Montgomery County Department of Environmental Protection



Legend

- Germantown View Stormwater Pond
- Construction Access Route
- Streams

Germantown View Stormwater Pond Project

0 0.2 0.4 Mi