



DEPARTMENT OF ENVIRONMENTAL PROTECTION

Marc Elrich
County Executive

Jon Monger
Director

March 4, 2025

Dear Resident,

This letter is to inform you about construction of the Grosvenor / Luxmanor Stream Restoration Project. The location of the project is shown on the map on reverse side. This project is managed by the Montgomery County Department of Environmental Protection and is part of Montgomery County's ongoing commitment to improve water quality in our local streams and in the Chesapeake Bay.

This Project will improve stream condition by stabilizing stream channels, reducing erosion and resulting sedimentation, improving water quality, enhancing in-stream habitat for fish and other aquatic life and establishing healthy vegetative cover with native plants, trees and shrubs on stream banks and in areas adjacent to the stream. There are trees in the project area that are in poor condition due to eroding banks. These and other trees, along with invasive vegetation, will be removed during construction. As the project progresses and immediately after project completion, the area around the stream may look bare and sparse. It will take time for newly planted vegetation to become established and look more like a forest.

Construction is scheduled to start in **March 2025**, initial activity will include staking out and installing fencing around the Limits of Disturbance (LOD), installing the construction access routes and staging areas. Work in the stream will begin in June 2025 and is expected to be completed in **June 2026**. Construction will be conducted in segments, the anticipated dates of construction for each segment will be updated on the project map (reverse side) which will be posted on the project webpage.



Project
Webpage



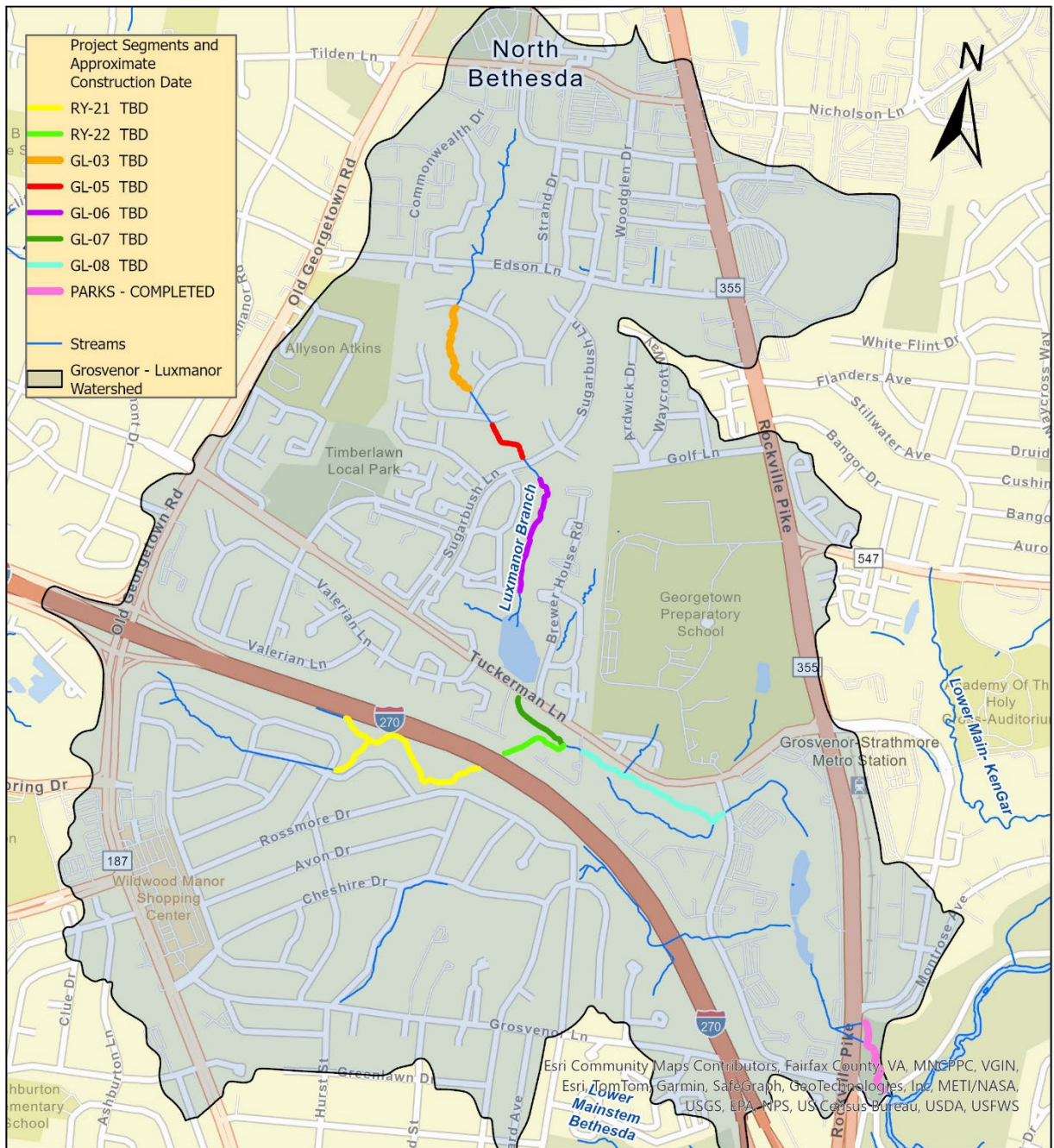
How to reduce
stormwater on
your property




If you have questions or concerns about this project, please contact Doug Marshall at douglas.marshall@montgomerycountymd.gov or 240-777-7767.

Sincerely,

Doug Marshall

Project Planner,
Montgomery County Department of Environmental Protection



 <p>DEPARTMENT OF ENVIRONMENTAL PROTECTION MONTGOMERY COUNTY • MARYLAND</p>	<h2>Grosvenor / Luxmanor Stream Restoration Project</h2>	 <p>clean water for all Dept. of Environmental Protection</p>
<p>0 0.1 0.2 0.4 0.6 Miles</p> 		<p>2025</p>