

## RAINSCAPES REWARDS

# How to Make a Planting Plan



### Environmentally Friendly Landscapes for Healthier Watersheds

Before installing a rain garden, conservation landscape or green roof, you must submit a Planting Plan and Plant List for review and approval by RainScapes staff. A landscape designer can do this for you. If you are doing the project yourself, the diagrams below show two different ways to draw the same garden; this is a minimum standard. We cannot accept post-it notes, excel or other creative but non-standard plan formats. (Note, the garden should not have a lot of exposed area once planted.)

Indicate where the water comes from to the garden

Show the garden in relation to a structure, and indicate the distance from the structure. Rain Gardens must be a minimum of 10' away from all build-

Include a North arrow. (Google maps can help.)

Include at least one dimensional line.

Include a graphic scale since the designs are often resized when photocopied.

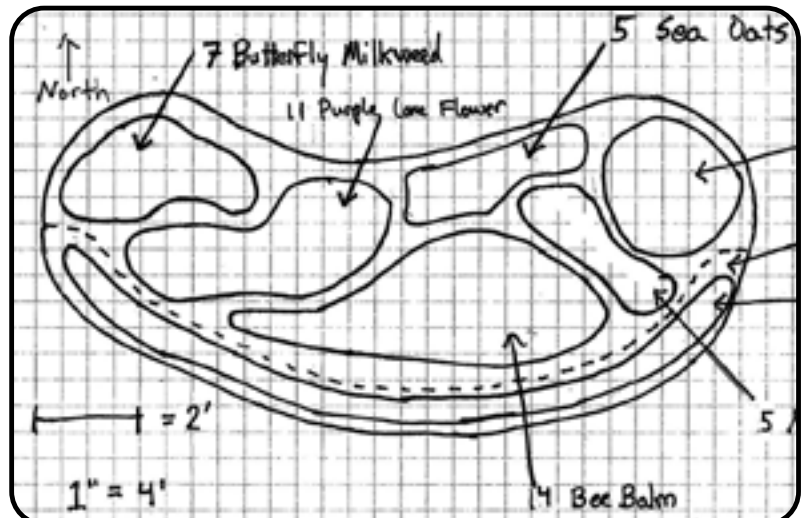
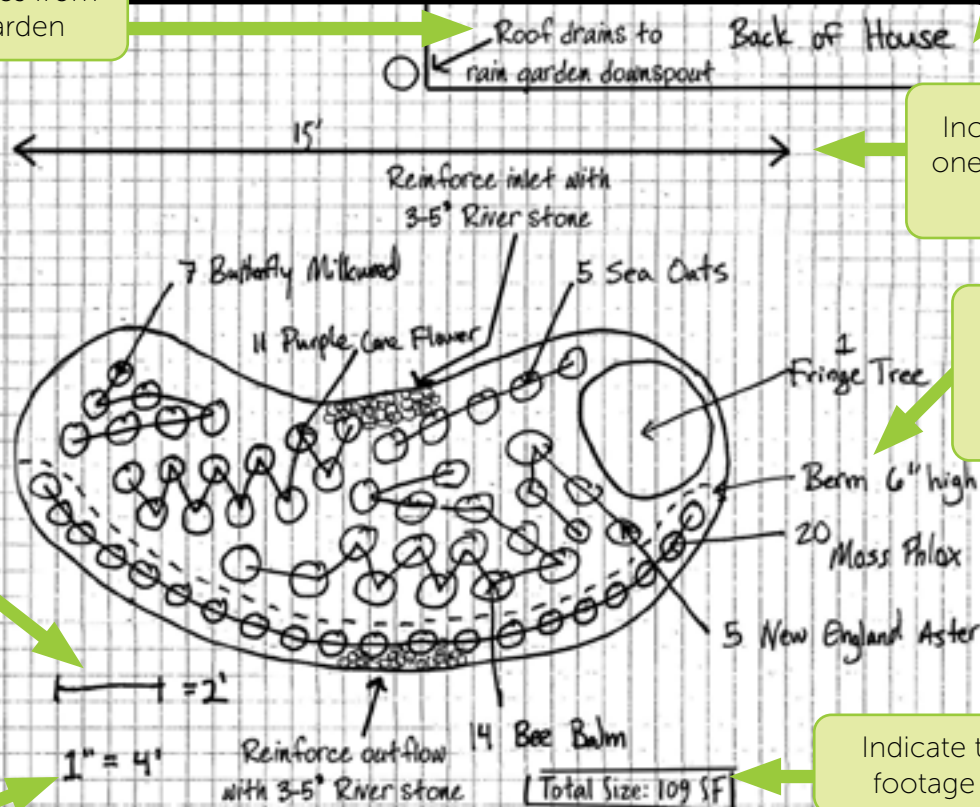
If using a berm, include the height of the

This label is OK, but you must also include a graphic scale as shown above.

One method is to draw the individual plants and then connect them with a line. (Example above.)

Another method is to draw a shape that shows a grouping of the same species of plants. Be sure to indicate how many plants are in each grouping. (Example right.)

Using graph paper is not required but can be helpful.



DEPARTMENT OF  
ENVIRONMENTAL  
PROTECTION  
MONTGOMERY COUNTY • MARYLAND

Questions? Call 311 or email [RainScapes@MontgomeryCountyMD.gov](mailto:RainScapes@MontgomeryCountyMD.gov) • [RainScapes.org](http://RainScapes.org)

# How to Write a Plant List



## Environmentally Friendly Landscapes for Healthier Watersheds

When you submit a planting plan, it must be accompanied by a plant list. See the example below.

Scientific Name	Common Name	Pot Size	Quantity	Spacing
<i>Chionanthus virginicus</i>	Fringe Tree	15 Gallons	1	N/A
<i>Monarda didyma</i>	Bee Balm	Quart	14	3' o.c.
<i>Asclepias tuberosa</i>	Butterfly Milkweed	Quart	7	18" o.c.
<i>Phlox subulata</i>	Moss Phlox	Quart	20	18" o.c.
<i>Symphotrichum novae-angliae</i>	New England Aster	1 Gallon	5	2' o.c.
<i>Echinacea purpurea</i> 'Kim's Knee High'	Purple Coneflower 'Kim's Knee High'	1 Gallon	11	18" o.c.
<i>Chasmanthium latifolium</i>	Sea Oats	<del>Seed</del>	5	2' o.c.

Scientific name  
REQUIRED  
If you don't know it,  
ask us.

Common Name

Pot size is  
required.

Quantity and spacing are  
required so we can  
determine plant cover.

Seed is not allowed.

If using a specific variety,  
please include the name so  
we can determine the plant's  
height and spread.

- Perennials are usually planted 12" - 18" o.c.
- Shrubs are usually planted 3' - 4' o.c.

**o.c. (on center)** is the distance from the center of one plant to the center of the next, which depends on the mature width of the plants.



- For more information on plant spacing, please refer to our [Plant Spacing Guide](#).
- Quickly get a rough estimate of plant quantities needed for a given area with this online [fillable Excel plant spreadsheet](#).
- For [planting design templates](#), please refer to our preplanned rain garden designs; these can also be adapted for conservation.



Questions? Call 311 or email [RainScapes@MontgomeryCountyMD.gov](mailto:RainScapes@MontgomeryCountyMD.gov) • [RainScapes.org](http://RainScapes.org)