

DICKERSON AREA FACILITIES

WATER QUALITY MONITORING

March 2021

(Update July 2021)

Ray Liou

Senior Engineer

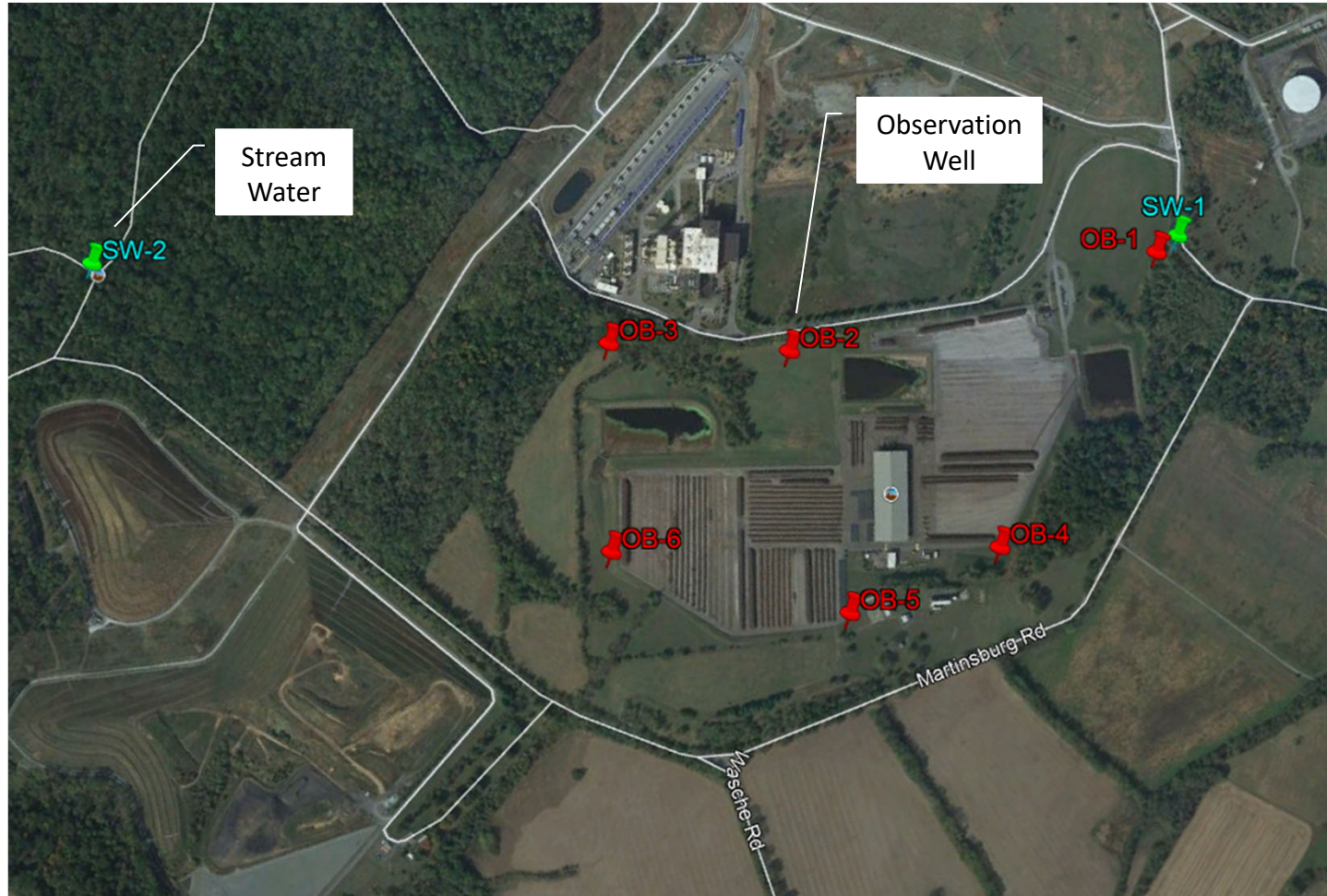
Recycling and Resource Management Division

Department of Environmental Protection



OB-04

Stream and Ground Water Sampling Locations



Analytes and Detection Limits

Pesticides & Herbicides	Detection Limit (mg/L)
2,4,5-TP	0.0860
2,4-D	0.6300
Heptachlor Epoxide	0.0038
Endosulfan Sulfate	0.0029
Aldrin	0.0019
alpha-HCH (alpha-BHC)	0.0038
beta-BHC	0.0029
delta-BHC	0.0029
Endosulfan II	0.0029
4,4'-DDT	0.0150
Chlordane	0.1500
gamma-BHC	0.0048
Dieldrin	0.0019
Endrin	0.0029
Methoxychlor	0.0095
4,4'-DDD	0.0038
4,4'-DDE	0.0029
Endrin Aldehyde	0.0029
Heptachlor	0.0038
Toxaphene	0.5000
Endosulfan I	0.0019

Polychlorinated Biphenyls (PCB's)	Detection Limit (mg/L)
Aroclor-1260	0.057
Aroclor-1254	0.048
Aroclor-1268	0.095
Aroclor-1221	0.290
Aroclor-1232	0.095
Aroclor-1248	0.095
Aroclor-1016	0.067
Aroclor-1262	0.038
Aroclor-1242	0.086
Total PCB's	0.290

Nitrate & Heavy Metals	Detection Limit (mg/L)
Nitrate-N	0.032000
Lead, Total	0.000740
Mercury, Total	0.000077
Nickel, Total	0.001900
Arsenic, Total	0.001100
Cadmium, Total	0.000370
Copper, Total	0.001900
Zinc, Total	0.001900

Analyses comply with methodology requirements of 40 CFR Part 141.

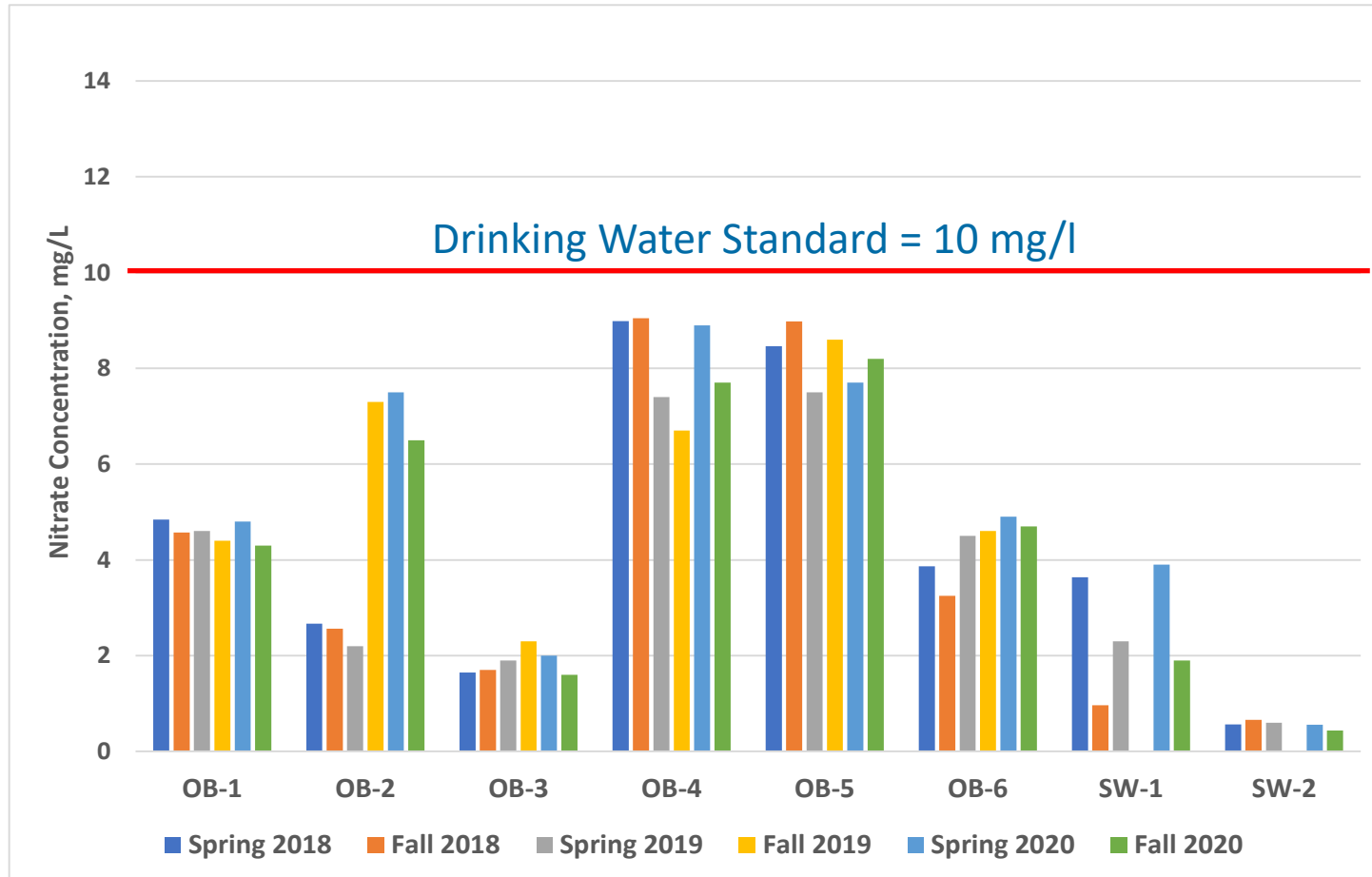
2018 - 2020 Sampling Results

	Spring 2018		Fall 2018			Spring 2019		Fall 2019		Spring 2020		Fall 2020				
	Copper	Zinc	Copper	Nickel	Zinc	Copper	Zinc	Copper	Zinc	Copper	Zinc	Arsenic	Cadmium	Copper	Nickel	Zinc
STD	1.3	NA	1.3	NA	NA	1.3	NA	1.3	NA	1.3	NA	0.01	0.005	1.3	NA	NA
OB-1				0.0179	0.0050		0.0076		0.0065							
OB-2				0.0096							0.0022	0.0011	0.0005			0.0045
OB-3		0.0051			0.1420						0.0039					0.0087
OB-4	0.0203		0.0261		0.0094	0.0140		0.1300	0.0200	0.021	0.0020			0.0570		0.0094
OB-5					0.0149				0.0068							0.0082
OB-6					0.0098						0.0020					0.0100
SW-1				0.0056	0.0091						0.0025			0.0045	0.0037	0.0039
SW-2		0.0131			0.0075											0.0049

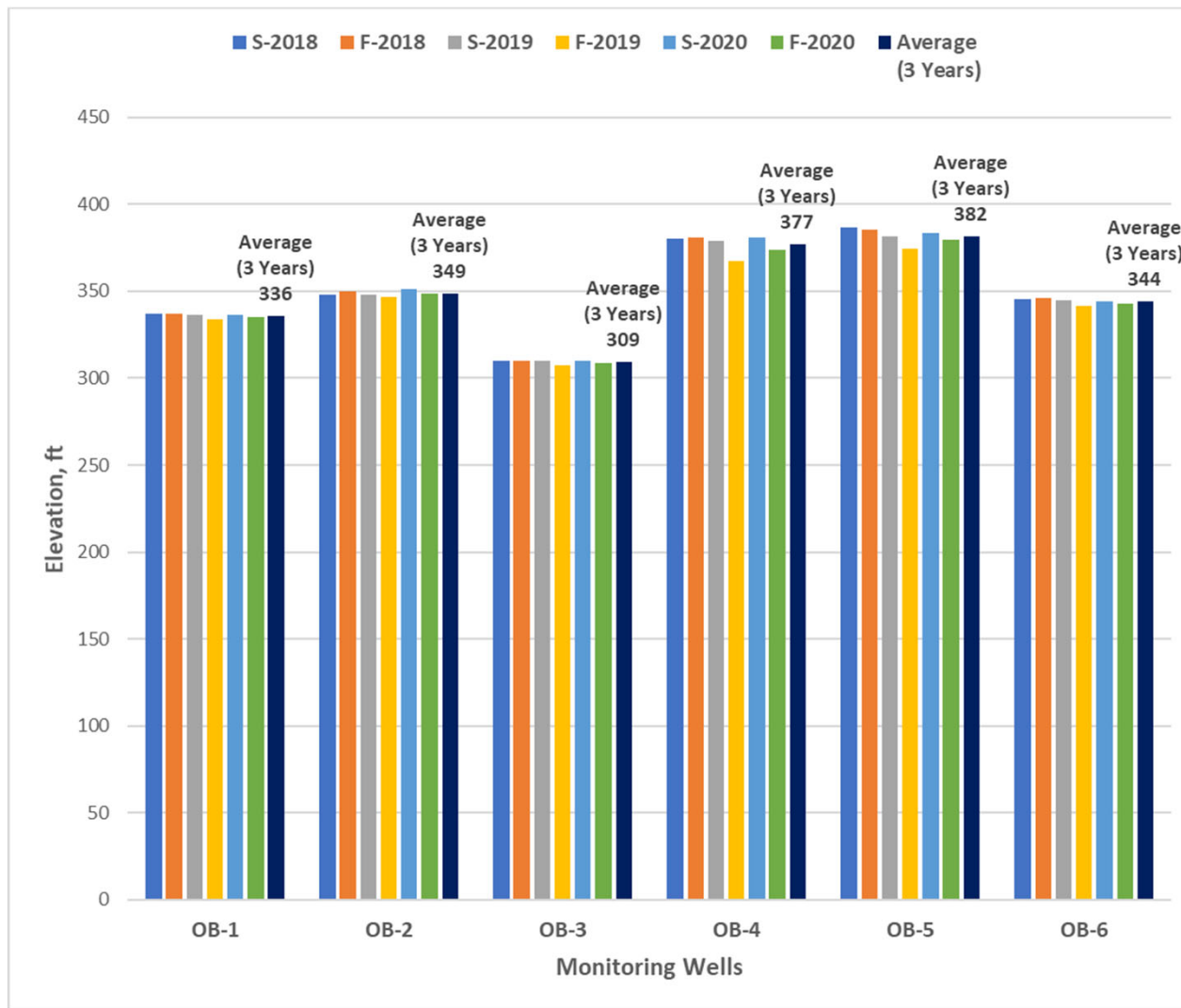
Blank cells = Non-Detect Only detected are listed All results are in mg/L

- No samples for Pesticides, Herbicides, PCBs, Lead, and Mercury were detected.
- In some samples, Arsenic, Cadmium, Copper, Nickel, and Zinc were detected. All detected levels were lower than EPA Drinking Water Standards.

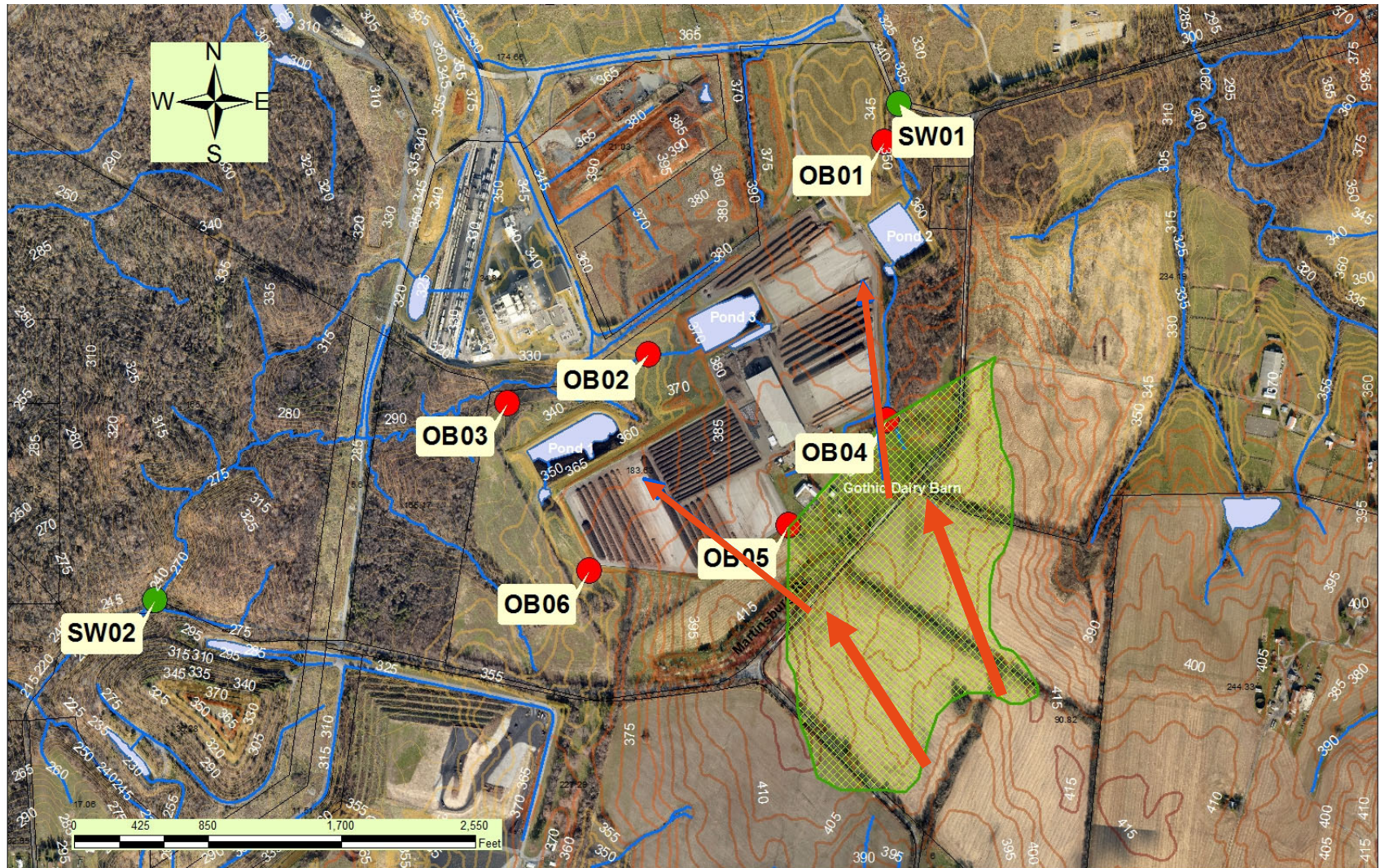
Nitrate Levels in Groundwater and Surface Water



Well Water Elevations

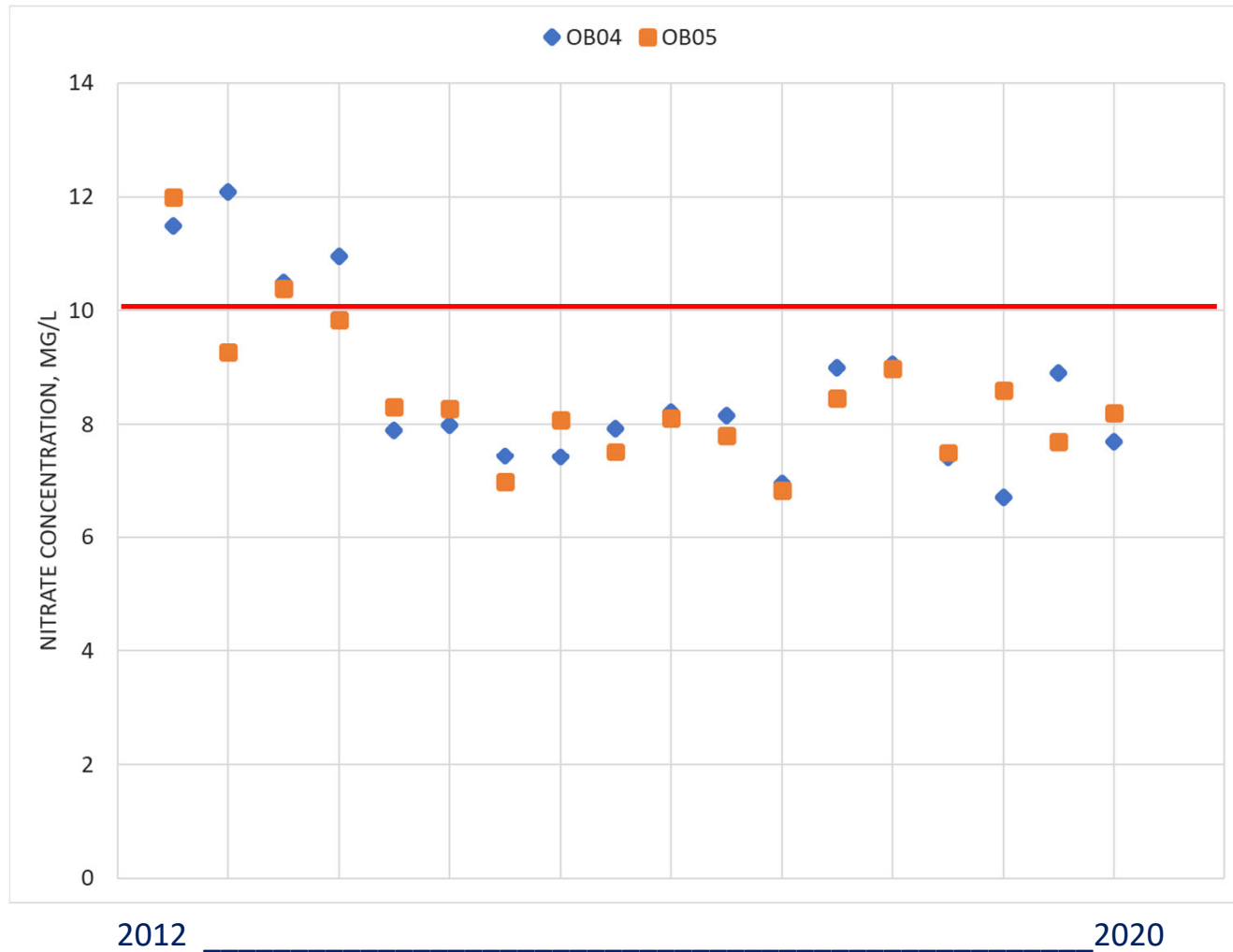


Topographic Contour and Direction of Aquifer Flow



USEPA Site Groundwater Hydrogeology ([link](#))

Nitrate Concentration Trend at OB04 and OB05





Questions?