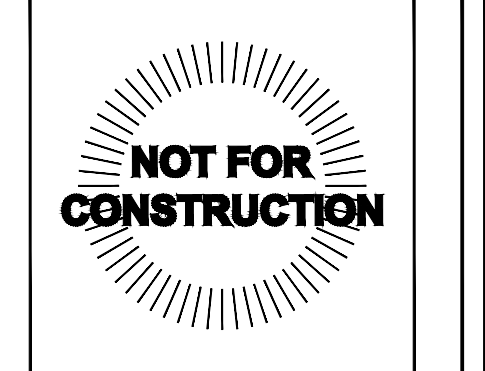


ALL ELEVATION AND DISTANCE MARKS ARE APPROXIMATE

**RBI SOLAR**  
 Total Solar Service: Design • Fabrication  
 Installation • Parts • Repair Service  
 5513 VINE STREET  
 CINCINNATI, OH 45217  
 513.242.2051  
 FAX: 513.242.0816

PROFESSIONAL SEAL

ENGINEER'S SEAL APPLIES TO DESIGN OF STRUCTURAL COMPONENTS ONLY



RBI SOLAR IS NOT RESPONSIBLE FOR CONSTRUCTION THAT IS BUILT FROM SET LABELED "NOT FOR CONSTRUCTION"

# SOLAR CANOPY FOR REC SOLAR

RELEASE RECORD

MARK	DATE	DESCRIPTION
2	3-10-17	75% REVIEW
1	2-10-17	50% REVIEW

PROJECT INFORMATION

TITLE & ADDRESS:  
**100 EDISON PARK DRIVE  
 GAITHERSBURG, MD 20878**

RBI SOLAR PROJECT No.:  
 177001

DRAWN BY: ABB      REVIEWED BY: -

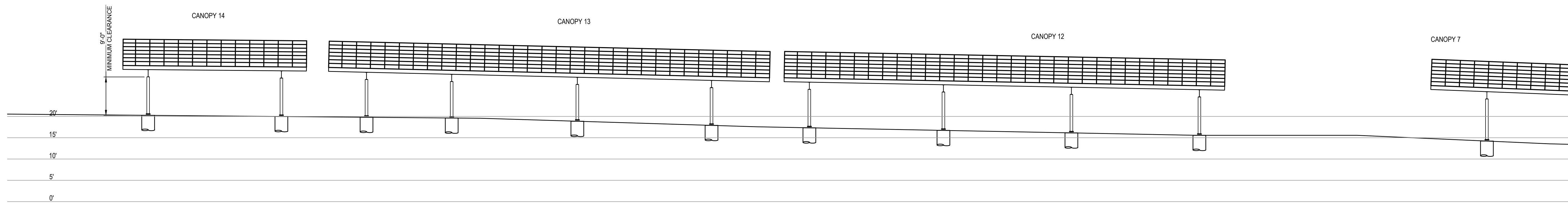
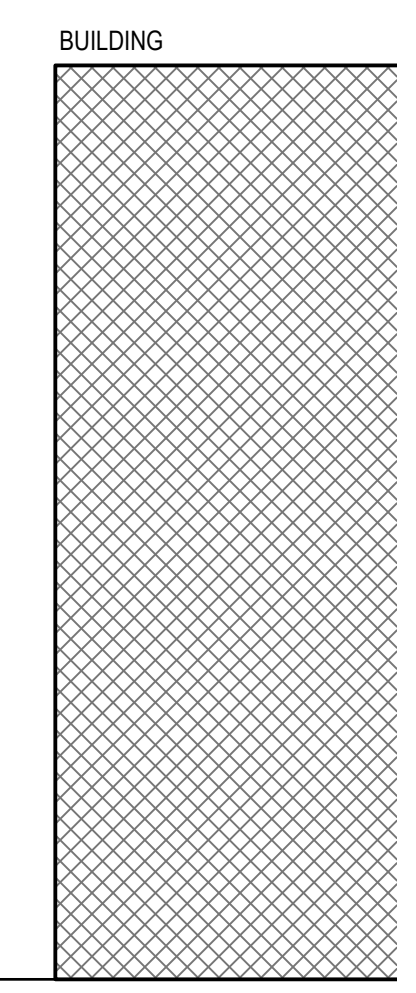
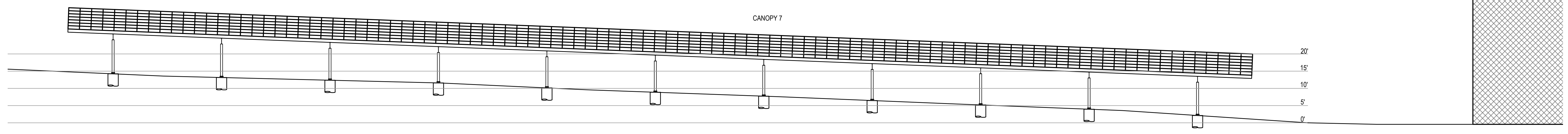
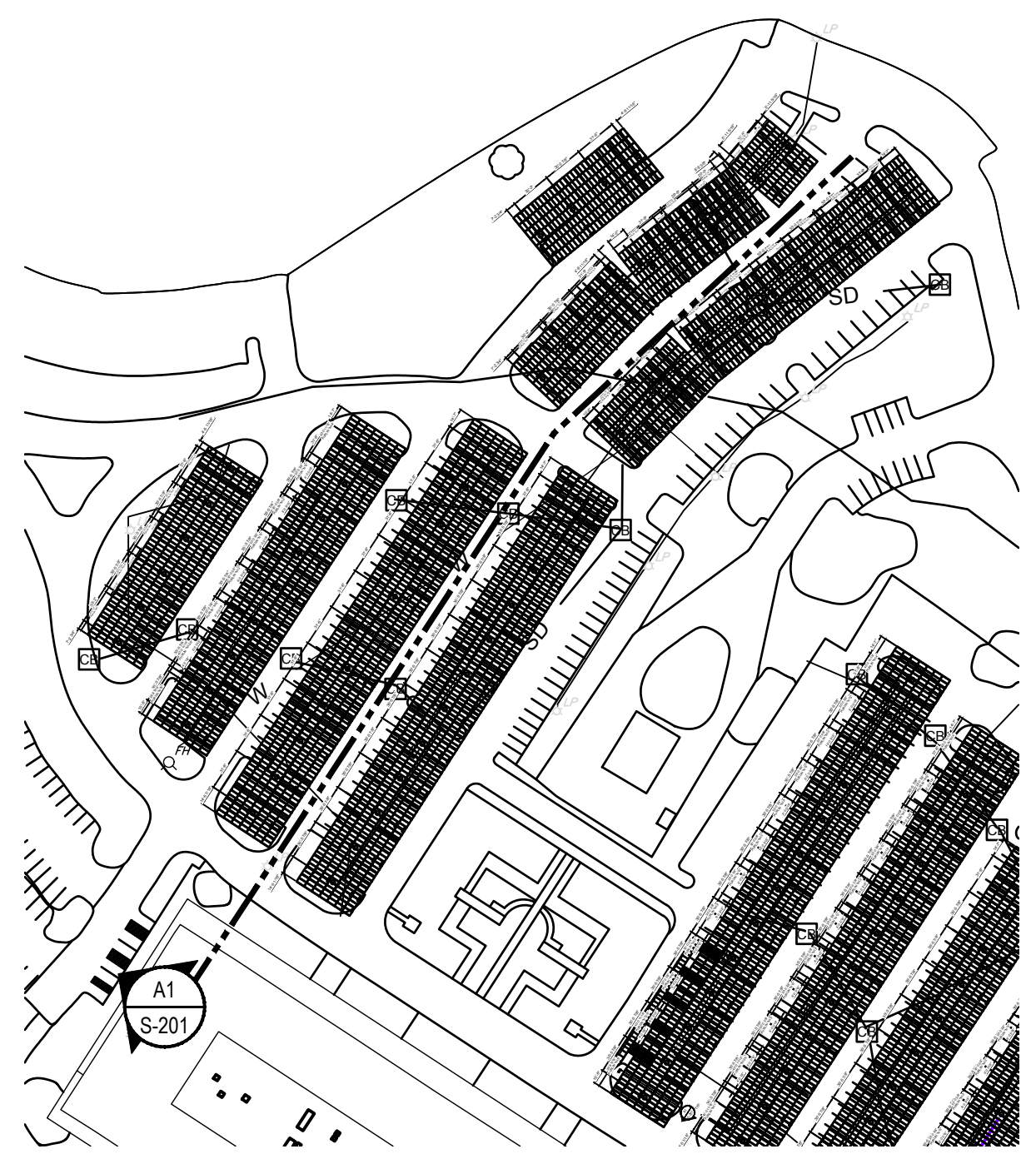
SHEET TITLE:  
 ELEVATION

SHEET No.:  
**S-201**

USER: ABERTHE    PLOTTED: 3/27/2017 - 8:49 AM    S:\RBI SolarDesign\2017 Jobs\177001 - REC Solar-Montgomery County PSHQ\Drawings\177001.dwg    LAYOUT: S-201

**A1**  
 SCALE:  
 NTS  
**ELEVATION**

USER: ABERTKE PLOTTED: 3/27/2017 8:49 AM S:\RBI SolarDesign\2017 Jobs\177001 - REC Solar-Montgomery County PSHO\Drawings\177001.dwg LAYOUT: S-202



A1  
SCALE:  
NTS

**ELEVATION**

5513 VINE STREET  
CINCINNATI, OH 45217  
513.242.2051  
FAX: 513.242.0816

PROFESSIONAL SEAL

ENGINEER'S SEAL APPLIES TO DESIGN OF STRUCTURAL COMPONENTS ONLY

**NOT FOR CONSTRUCTION**

RBI SOLAR IS NOT RESPONSIBLE FOR CONSTRUCTION THAT IS BUILT FROM SET LABELED "NOT FOR CONSTRUCTION"

**SOLAR CANOPY FOR REC SOLAR**

RELEASE RECORD

MARK	DATE	DESCRIPTION
2	3-10-17	75% REVIEW
1	2-10-17	50% REVIEW

PROJECT INFORMATION

TITLE & ADDRESS:  
**100 EDISON PARK DRIVE  
GAITHERSBURG, MD 20878**

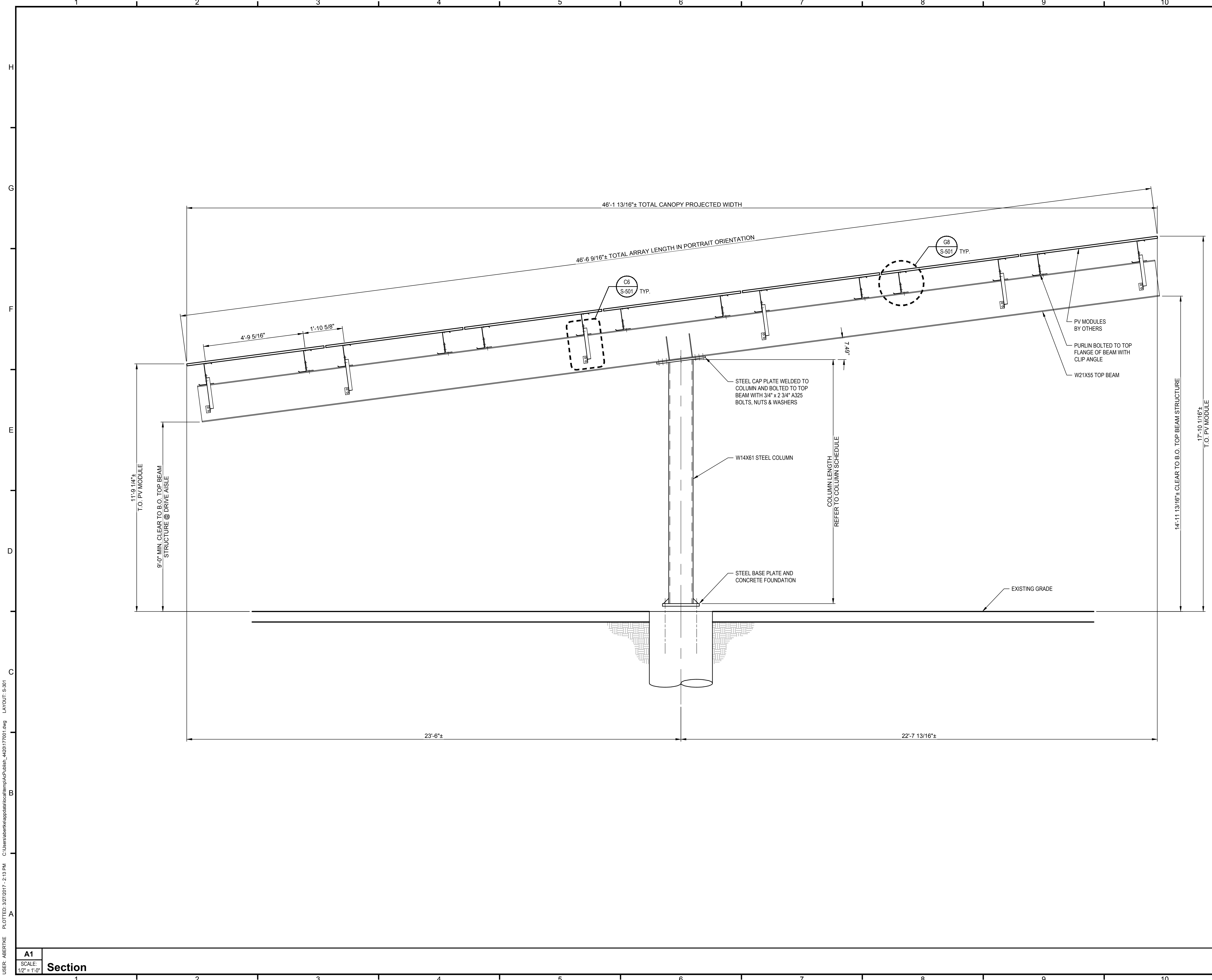
RBI SOLAR PROJECT No.:  
177001

DRAWN BY: ABB	REVIEWED BY: -
------------------	-------------------

SHEET TITLE:  
ELEVATION

SHEET No.:  
**S-202**

The drawings and data in this document, and the intellectual property and confidential information contained, are the property of RBI Solar, Inc. 5513 Vine Street, Cincinnati, Ohio, 45217. Any party accepting this document does so in confidence and agrees that it shall not be reproduced, in whole or in part, nor disclosed to others without the written consent of RBI Solar, Inc. © 2017.



PROFESSIONAL SEAL  
 ENGINEER'S SEAL APPLIES TO DESIGN OF STRUCTURAL COMPONENTS ONLY  
**NOT FOR CONSTRUCTION**  
 RBI SOLAR IS NOT RESPONSIBLE FOR CONSTRUCTION THAT IS BUILT FROM SET LABELED "NOT FOR CONSTRUCTION"

**SOLAR CANOPY FOR REC SOLAR**

RELEASE RECORD

MARK	DATE	DESCRIPTION
2	3-10-17	75% REVIEW
1	2-10-17	50% REVIEW

PROJECT INFORMATION

TITLE & ADDRESS:  
**100 EDISON PARK DRIVE  
 GAITHERSBURG, MD 20878**

RBI SOLAR PROJECT No.:  
 177001

DRAWN BY: ABB	REVIEWED BY: -
------------------	-------------------

SHEET TITLE:  
**CANOPY SECTION**

SHEET No.:  
**S-301**

USER: ABERTKE PLOTTED: 3/27/2017 - 2:13 PM C:\Users\abertke\appdata\local\temp\A5P\Juhh\_4420177001.dwg LAYOUT: S-301

A1  
 SCALE:  
 1/2" = 1'-0"  
**Section**

The drawings and data in this document, and the intellectual property and confidential information contained, are the property of RBI Solar, Inc. 5513 Vine Street, Cincinnati, Ohio, 45217. Any party accepting this document does so in confidence and agrees that it shall not be abstracted, in whole or in part, nor disclosed to others without the written consent of RBI Solar, Inc. © 2017.