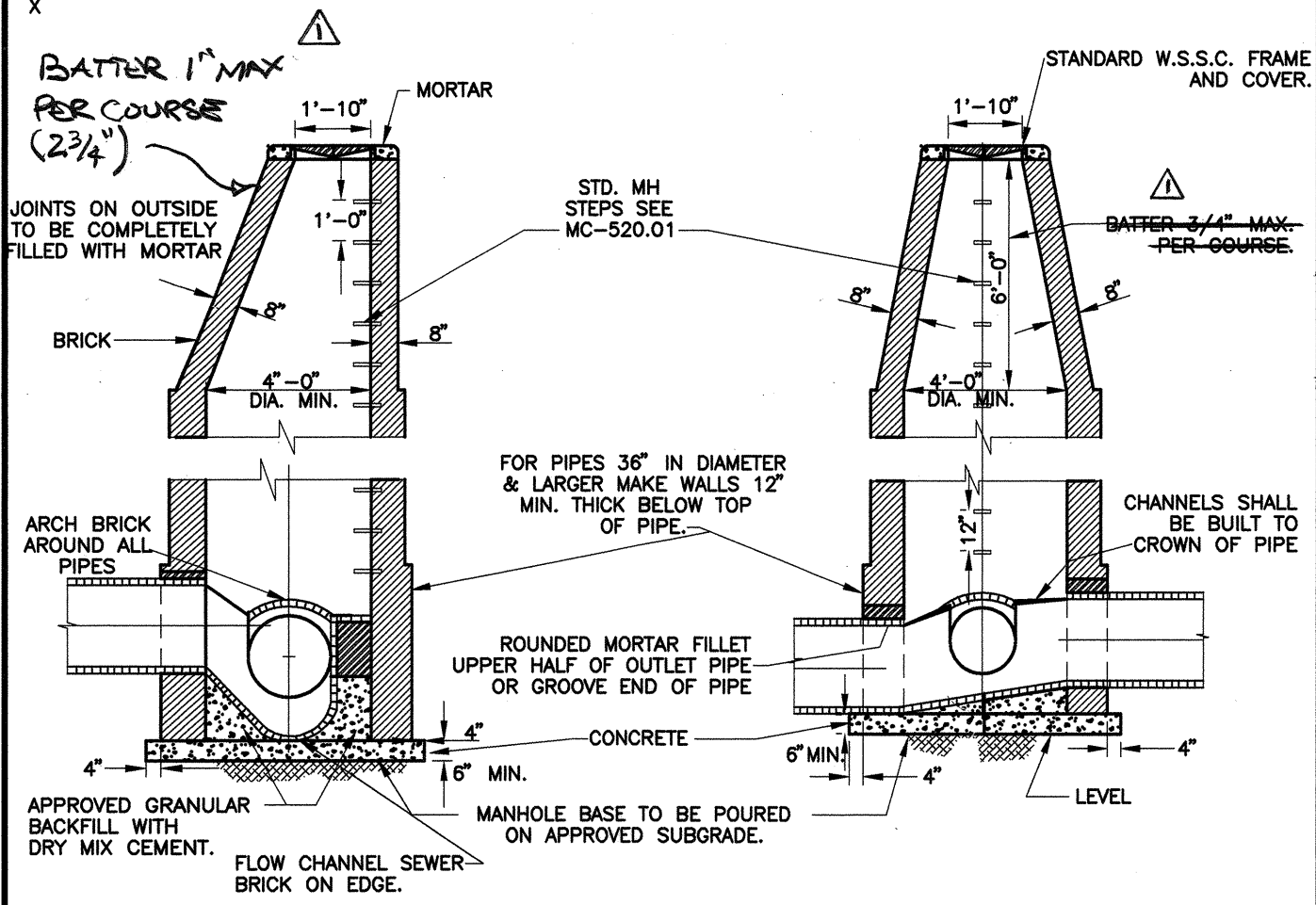


X



GENERAL NOTES

1. REFER TO MARYLAND STATE HIGHWAY ADMINISTRATION FOR MATERIALS AND METHODS OF CONSTRUCTION.
2. USE SOLID MASONRY (BRICK OR CONCRETE BLOCK) OR POURED CONCRETE FOR WALLS.
3. PARGE OUTSIDE WALLS.
4. MORTAR SHALL CONFORM TO ASTM SPECIFICATION C270 TYPE M.
5. f'c = 3,500 P.S.I. at 28 DAYS.
6. FOR PIPES LARGER THAN 30" PROVIDE STEPS IN CHANNELS OF STRUCTURES. SEE STANDARD DETAIL STANDARD MC-520.02.

P:\DOT\STD\MC51001 7-12-94 8:41:15 am EST

APPROVED JAN 5/96
DATE

Trudy Moore
DIRECTOR, DEPT. OF TRANS.

Edgar... ..
CHIEF, DIV. OF ENG. SERVICES

REVISED
Δ CORRECTED
MAX BATTER
6/25/12

MONTGOMERY COUNTY
DEPARTMENT OF TRANSPORTATION

"A" MANHOLE

STANDARD NO. MC-510.01