



# MCDOT NEWS

News from the Montgomery County Department of Transportation, Division of Highway Services

## Greenwood Knolls Residential Roadway Resurfacing Project

### Roadway Repairs to Begin Soon, Includes Base Repair Patching and Hot-Mix Asphalt Paving

#### PURPOSE

This newsletter is to inform you of the upcoming road repairs and resurfacing of the Greenwood Knolls community. This pavement system preservation project employs long term strategies to preserve and enhance the physical and operating conditions of the roadway system as it exists and will produce a system serviceable for many years.

#### BACKGROUND

The Montgomery County Department of Transportation's (MCDOT) Division of Highway Services (DHS) maintains nearly 5,200 lane miles of streets and highways in the county's transportation system. As part of our pavement system preservation efforts, MCDOT initiated a new Pavement Management System in 2008. At that time, MCDOT concluded a complete condition inventory of all County roads, identifying and rating the condition of each. This new assessment survey, updated every two years, has enabled the development of County-wide roadway repair strategies based on a formula-based objective rating system coupled with budgetary parameters.

#### SCOPE OF PROJECT

Overall, the pavement conditions in your community were generally rated as fair, with some areas described as needing more attention. This rating meets the criteria for the County's Residential Roadway Resurfacing Program, consisting of full-depth (base repair) patching followed by hot mix asphalt (HMA) overlay.

#### SCHEDULE

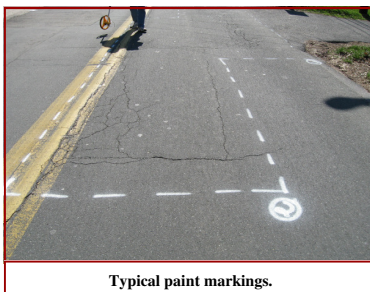
This project is scheduled to begin in August 2015, and will

take 4 to 6 weeks to complete, weather and other operational requirements permitting. Work hours will be between 7 am and 5 pm, Monday through Friday. However, the contractor will be permitted to work longer hours and on Saturdays, if necessary, to expedite the completion of the project.

#### PROJECT WORK PLAN

Generally, the work will proceed as follows:

**1. Conduct survey** - MCDOT inspectors will identify areas of pavement that, prior to resurfacing, may require full depth patching or other repairs. These areas are marked by white paint.



Typical paint markings.

**2. Full Depth Patching** - Full depth patching restores the pavement's structural integrity and capacity to support vehicle loads. The areas of distressed pavement marked by the MCDOT inspectors is removed and replaced by new asphalt pavement. The final paving of the road will cover these patched areas.



Typical milling operation.

**3. Pavement milling/edge milling** - Edge milling/grinding off the edges of the existing pavement near curbs and driveways allows the new pavement to match the level of the existing curbs, etc., and restores the proper highway cross-section to improve ride-ability and drainage. The new pavement will provide a smoother ride and assure positive drainage.

**4. Utility Adjustments** - Sewer and storm drain manholes, water valves and gas valves, and other underground utility access covers need to be elevated to the same grade as the proposed pavement, usually 1" to 2". During construction activities, all utility surface adjustments will be maintained by the placement of temporary HMA ramps until placement of final paving occurs (up to three weeks depending on other operational requirements).

**5. Paving with hot mix asphalt** - Asphalt is delivered to the site in dump trucks. The hot material is transferred into the hopper of an asphalt paving machine such as the one depicted in the photo. The paving machine places the hot asphalt in a uniform thickness and provides initial compaction.

Following placement, steel wheeled rollers complete the compaction effort until field

testing indicates that all relevant specifications have been met.

**6. Replace roadway lane markings** - Permanent lane markings, if existing prior to paving, will be remarked shortly after all paving operations have been completed.

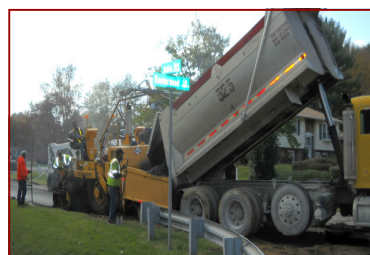
#### IMPACTS

Street paving will necessitate short-term parking restrictions. Our intent is to maintain continuous traffic at all times utilizing lane closures and/or alternating one-way traffic patterns. However, minor traffic delays and brief daily road closures may be experienced as flaggers manually direct traffic safely through the construction zone. Signs will be posted identifying such restrictions.

Access to residences will be available at all times, however minor delays may be experienced as workers restrict traffic from freshly placed hot mix asphalt.

Generally speaking this work is best characterized as noisy and disruptive. However, MCDOT and its contractors will take all necessary steps to mitigate any inconveniences this work may cause.

Quality control for the entire project will be managed by County inspection staff to ensure that the project meets contract specifications.



Typical asphalt paving operation.

*We apologize in advance for any unavoidable inconvenience and thank you for your cooperation and patience as we work to improve the County infrastructure for residents and users.*



## MONTGOMERY COUNTY, MARYLAND

DEPARTMENT OF TRANSPORTATION

DIVISION OF HIGHWAY SERVICES

100 EDISON PARK DRIVE, 4th FLOOR, GAITHERSBURG, MD 20878

(240) 777-ROAD (7623)

[www.montgomerycountymd.gov/DOT-Highway/](http://www.montgomerycountymd.gov/DOT-Highway/)

### ***KEEPING MONTGOMERY MOVING***

MCDOT NEWS No. 2015.80

# **NOTICE OF THE GREENWOOD KNOLLS RESIDENTIAL PAVING PROJECT IN SILVER SPRING**

#### **SAFETY NOTICE**

Please drive gently and safely through the work site and kindly remember that while repair work is underway, personnel and construction vehicles will be moving around the site. Some materials may be stored in the area. Please use caution when walking or driving through the construction zone. Children may be attracted to the noise and machinery, so we ask that you please keep all children under close supervision at all times, even after the work is completed for the day. Also, please follow the direction of flaggers and temporary signs and traffic control devices. *If, for some reason, you have a medical condition that could be potentially impacted by construction activities, please alert the project manager listed below or Josh Faust, Public Outreach Manager, at 240-777-7642.*

#### **IMPORTANT MCDOT CONTACTS**

**Project Manager:** Nicholas Boone 240-777-7648

**Program Manager:** Donald Noble 240-777-7601

Should your questions be of a more general nature please contact the MC311 Call Center by dialing 311 or 240-777-0311.

**DHS Email:** [mcdot.highway@montgomerycountymd.gov](mailto:mcdot.highway@montgomerycountymd.gov)

**DHS Website:** [www.montgomerycountymd.gov/DOT-Highway/](http://www.montgomerycountymd.gov/DOT-Highway/)

On the Highway Services Map, click on the **Silver Spring** Service Area, where you will find additional roadway maintenance projects scheduled in your area.

Follow us on Twitter and Facebook:



@MontCo\_Highways



mocohighwayservices

