

# WELCOME!



## KENSINGTON-PARKWOOD ELEMENTARY SCHOOL WALKABILITY STUDY FOLLOW UP

**MONTGOMERY COUNTY  
DEPARTMENT OF TRANSPORTATION  
Division of Traffic Engineering and Transportation**

**Safe Routes to School  
OPEN HOUSE MEETING  
OCTOBER 9, 2024**





# Kensington Parkwood Elementary School Safe Routes to School



## MEETING AGENDA

**Introduction**

**Walkability Studies**

**KPES Study / Short Term Improvements**

**Long Term Recommendations**

**Open Discussion**

**Project Timeline**





# Kensington Parkwood Elementary School

## Safe Routes to School



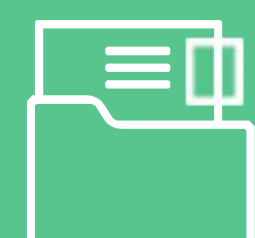
## What is a Walkability Study?

A walkability study is conducted to investigate the condition of existing infrastructure and propose improvements to provide safe and accessible routes for students walking and rolling to school. A study for each school is conducted within the entire "walking area" or "walkshed" as defined by Montgomery County Public Schools.



### Walking Areas Defined by MCPS

- Elementary Schools: within one 1 mile
- Middle Schools: within 1.5 miles
- High Schools: within 2 miles



### Data Collection

- Observe school arrival and dismissal operations.
- Inventory existing infrastructure conditions.
- Coordinate with community stakeholders and school staff.
- Compile traffic and crash data as available.



### Analysis

- Summarize observations.
- Identify safety hazards, barriers to walking and gaps in the pedestrian network.
- Review pedestrian infrastructure, condition, accessibility.



### Recommendations

- Prioritize short-term and long-term projects
- Review construction costs and implementation timeline





# Kensington Parkwood Elementary School

## Safe Routes to School



### School Walkshed Summary

- 592 students K thru 5th
- Saul Road and Parkwood Drive are Neighborhood Connectors
- Cedar Lane is an Area Connector
- Streets farthest from KPES lack pedestrian connectivity

### Map Legend

- Existing Sidewalk
- - - No Sidewalk
- - - KPES Walkshed Boundary





# Kensington Parkwood Elementary School

## Safe Routes to School



Sidewalk Segment Gap	Sidewalk Length (LF)
Clearbrook Ln	1,700
Dresden St	930
Glenridge St	850
Thornwood Rd	280
Roxbury Dr	1,750
Wildwood Rd	520
Amherst Ln	1,070
Delmont Ln	620
Conifer Ln	340





# Kensington Parkwood Elementary School Safe Routes to School

## Clearbrook Lane Sidewalk Considerations

### Clearbrook Lane

- Existing 50' right-of-way
- North curb section is 24' wide
- Utility poles along south side of street

#### North Side of Street (Odd Numbers)

- 18 tree impacts
- 25 driveway aprons
- 5 drainage structures
- 1 utility pole

#### South Side of Street (Even Numbers)

- 17 tree impacts
- 22 driveway aprons
- 7 drainage structures
- 16 utility pole
- 3 fire hydrants



Clearbrook Ln looking north. Utility pole offset from curb.



Pedestrian circulation connection at north end.



Open section (no curbs) to the east.



Curb inlet.





# Kensington Parkwood Elementary School Safe Routes to School

## Clearbrook Lane Sidewalk Considerations





# Kensington Parkwood Elementary School Safe Routes to School

## Dresden Street Sidewalk Considerations

### Dresden Street

- Existing 60' right-of-way
- North curb section is 24' wide
- Utility poles along north side of street

#### North Side of Street (Odd Numbers)

- 18 tree impacts
- 11 driveway aprons
- 7 utility poles

#### South Side of Street (Even Numbers)

- 14 tree impacts
- 11 driveway aprons
- 1 fire hydrant



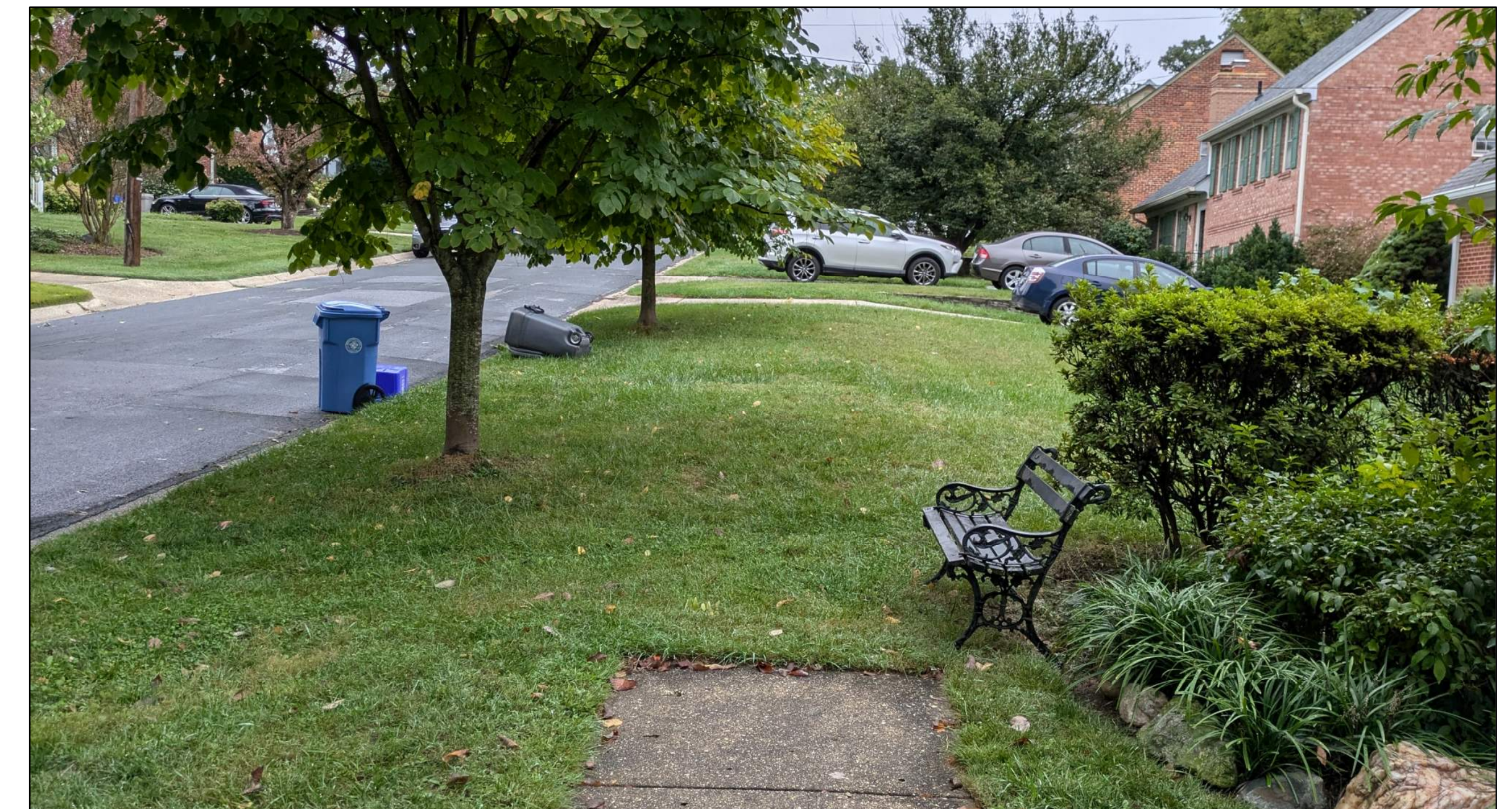
Typical roadside elements – landscaping, fire hydrant, street trees.



Properties with downspout outfalls through curb.



Segment includes mature trees with some in conflict with existing overhead utilities.



Existing Sidewalks with grass buffer end in front of 4409 and 4410 Dresden St.





# Kensington Parkwood Elementary School Safe Routes to School

## Dresden Street Sidewalk Considerations





# Kensington Parkwood Elementary School Safe Routes to School

## Glenridge Street Sidewalk Considerations

### Glenridge Street

- Existing 50' right-of-way
- North of Thornwood Rd is 25' wide
- South of Thornwood Rd is 24' wide
- Utility poles along south side of street

#### North Side of Street (Odd Numbers)

- 11 tree impacts
- 5 driveway aprons
- 2 drainage structures

#### South Side of Street (Even Numbers)

- 7 tree impacts
- 5 driveway aprons
- 7 utility poles
- 2 fire hydrants
- 1 drainage structure



Looking north towards Wildwood Rd. Utility poles on south side. Some street trees removed.



Looking north from Thornwood Dr. Drainage structures on both sides.



Vertical and horizontal curvature of Glenridge St.





# Kensington Parkwood Elementary School Safe Routes to School

## Glenridge Street Sidewalk Considerations





# Kensington Parkwood Elementary School Safe Routes to School

## Thornwood Road Sidewalk Considerations

### Thornwood Road

- Existing 60' right-of-way
- 36' wide
- Utility poles along west side of street

#### West Side of Street (Even Numbers)

- **6 tree impacts**
- 2 driveway aprons
- 1 drainage structure
- 3 utility poles

#### East Side of Street (Odd Numbers)

- **8 tree impacts**
- 2 driveway aprons
- 1 drainage structure



Looking north towards Glenridge St. Wide street section.



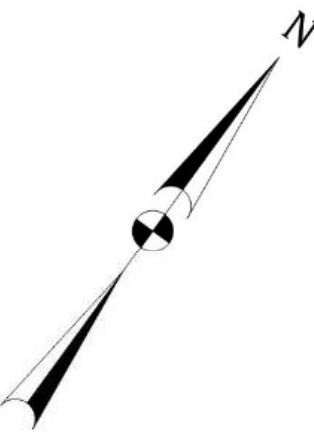
Street trees behind curb line.





# Kensington Parkwood Elementary School Safe Routes to School

## Thornwood Road Sidewalk Considerations





# Kensington Parkwood Elementary School Safe Routes to School

## Roxbury Drive Sidewalk Considerations

### Roxbury Drive

- Existing 60' right-of-way
- 25' wide
- Steep grades and mature trees

### North Side of Street (Odd Numbers)

- 19 tree impacts
- 17 driveway aprons
- 2 drainage structures
- 6 utility poles
- 1 fire hydrant

### South Side of Street (Even Numbers)

- 17 tree impacts
- 12 driveway aprons
- 5 utility poles
- 1 fire hydrant



Roxbury Dr near Saul Rd. Yield street configuration.



Looking west towards Wildwood Rd. Steep roadsides.



Looking west Towards Parkwood Dr. Street trees near curb. Elevation gain.



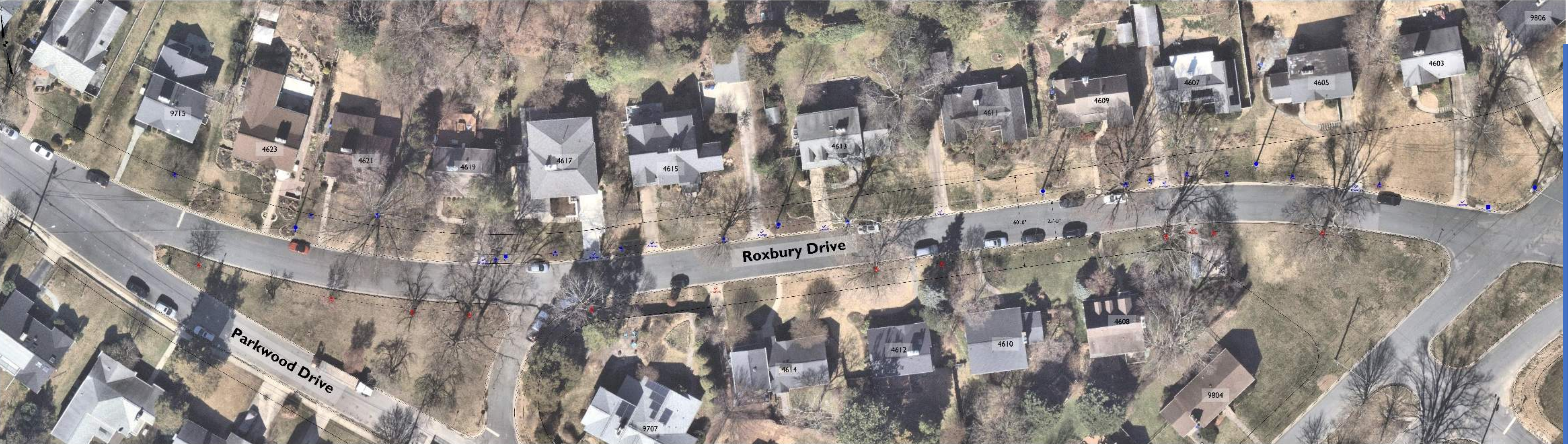
Looking west Towards Parkwood Dr merge.





# Kensington Parkwood Elementary School Safe Routes to School

## Roxbury Drive Sidewalk Considerations





# Kensington Parkwood Elementary School Safe Routes to School

## Wildwood Road Sidewalk Considerations

### Wildwood Road

- Existing 100' right-of-way
- 21' wide travel ways divided by 32' wide curbed, grass median

#### North Side of Street (Even Numbers)

- 2 tree impacts
- 4 driveway aprons
- 2 drainage structures
- 4 utility poles

#### South Side of Street (Odd Numbers)

- 4 tree impacts
- 1 driveway apron
- 2 drainage structures
- 2 utility poles
- 1 fire hydrant



Looking north towards Amhurst Ln. Roadside slopes.



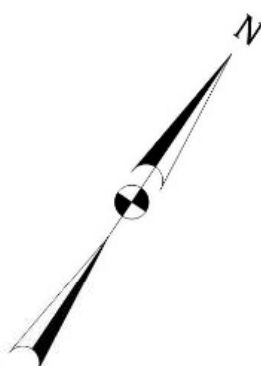
West end of Wildwood Rd provides connection to Rock Creek Trail.





# Kensington Parkwood Elementary School Safe Routes to School

## Wildwood Road Sidewalk Considerations





# Kensington Parkwood Elementary School Safe Routes to School

## Amherst Lane Sidewalk Considerations

### Amherst Lane

- Existing 50' right-of-way
- 26' wide

#### North Side of Street (Odd Numbers)

- 9 tree impacts
- 13 driveway aprons
- 2 fire hydrants
- 2 utility poles
- 1 drainage structure

#### South Side of Street (Even Numbers)

- 15 tree impacts
- 13 driveway aprons
- 2 drainage structures
- 8 utility poles



Tree marked for removal in front of 4500.



Looking east from Wildwood Rd. Steep slope of roadway and roadsides.



Tree stump remains in front of 4519.



Typical footpath treatment with staircase to curb.





# Kensington Parkwood Elementary School Safe Routes to School

## Amherst Lane Sidewalk Considerations





# Kensington Parkwood Elementary School Safe Routes to School

## Delmont Lane Sidewalk Considerations

### Delmont Lane

- Existing 60' right-of-way
- 26' wide

#### North Side of Street (Odd Numbers)

- 6 tree impacts
- 7 driveway aprons
- 1 fire hydrant
- 6 utility poles
- 2 drainage structures

#### South Side of Street (Even Numbers)

- 7 tree impacts
- 4 driveway aprons



Looking west towards Parkwood Dr. Staircases from front doors to curb.



Trees along north curb line.





# Kensington Parkwood Elementary School Safe Routes to School

## Delmont Lane Sidewalk Considerations





# Kensington Parkwood Elementary School Safe Routes to School

## Conifer Lane Sidewalk Considerations

### Conifer Lane

- Existing 50' right-of-way
- 27' wide

### North Side of Street (Odd Numbers)

- 4 tree impacts
- 3 driveway aprons
- 1 utility poles

### South Side of Street (Even Numbers)

- 5 tree impacts
- 3 driveway aprons
- 3 utility poles



Hedges obstructing sight lines.



Decorative landscaping within public right-of-way.



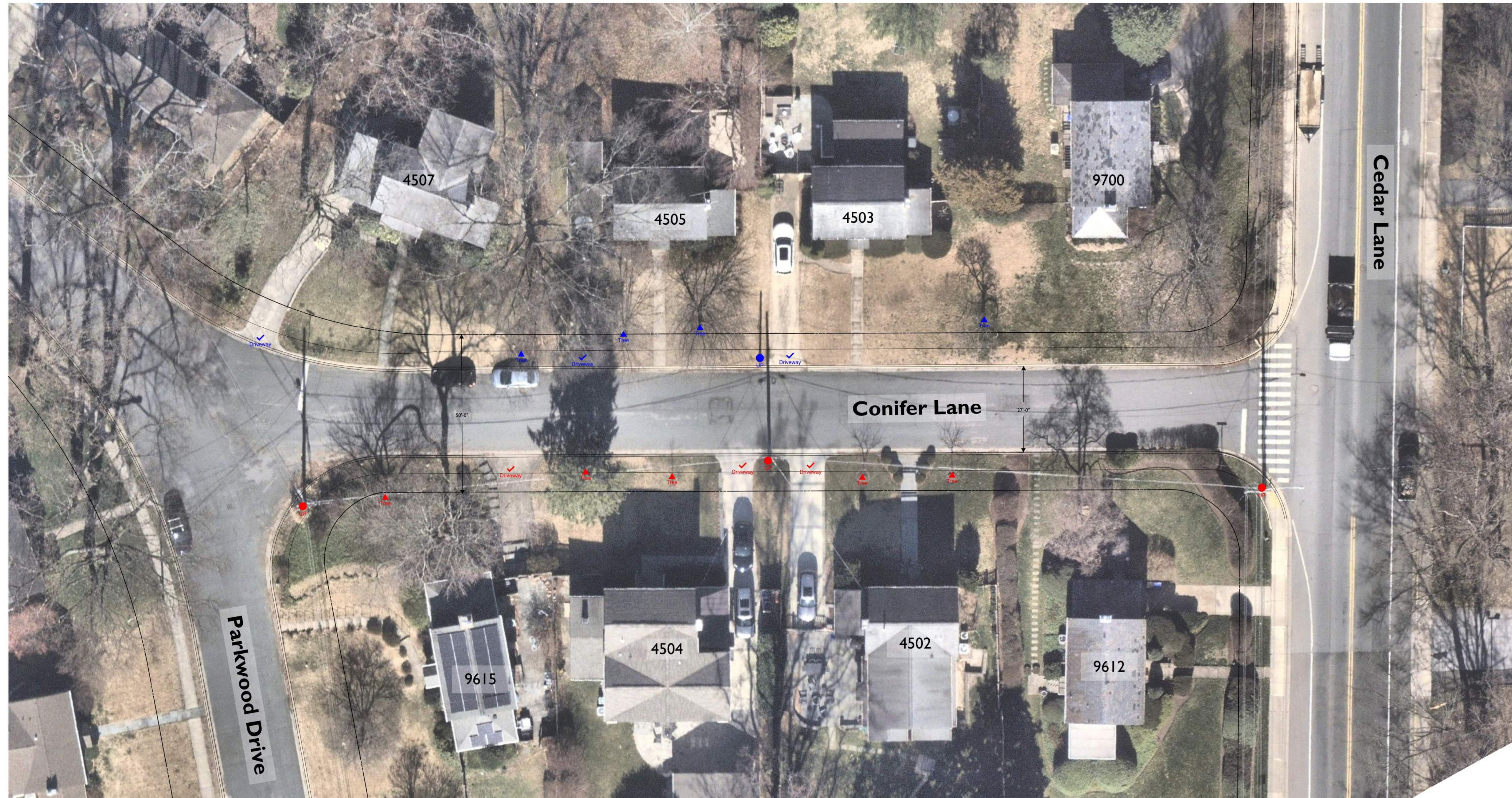
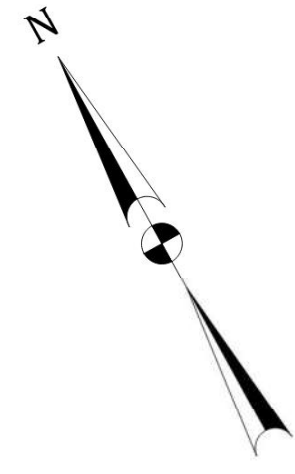
Vertical curvature along Conifer Ln. Looking east towards Cedar Ln.





# Kensington Parkwood Elementary School Safe Routes to School

## Conifer Lane Sidewalk Considerations





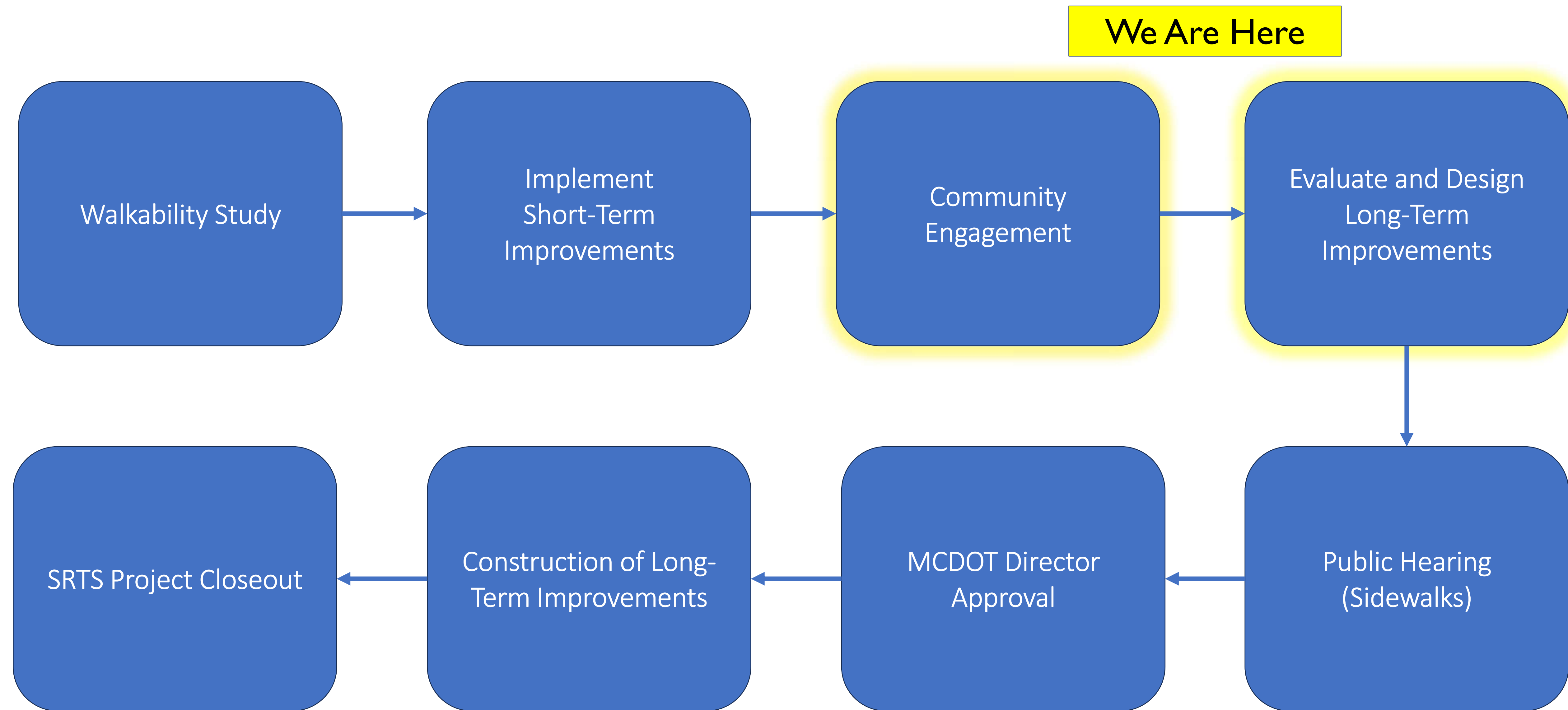
# Kensington Parkwood Elementary School

## Safe Routes to School



## Timeline

Where we are in the SRTS walkability study process...







# THANK YOU FOR ATTENDING

## Community Feedback

- If you wish to provide any written feedback, please submit your comments by:
- **Wednesday, November 13, 2024, by 5:00pm**
- Submissions can be made via:
- Email: [walkyourway@montgomerycountymd.gov](mailto:walkyourway@montgomerycountymd.gov) or via regular mail:
- Safe Routes to School Program
- ATTN: Nima Upadhyay
- 100 Edison Park Drive, 4<sup>th</sup> FL
- Gaithersburg, Maryland 20878

