



Montgomery County Department of Transportation
www.montgomerycountymd.gov/mcdot

WELCOME!



MONTGOMERY COUNTY
DEPARTMENT OF TRANSPORTATION

**FOREST KNOLLS ELEMENTARY SCHOOL
WALKABILITY STUDY FOLLOW UP**

VIRTUAL PUBLIC MEETING

OCTOBER 11, 2023

We will begin shortly. The Public Meeting will be recorded.





Montgomery County Department of Transportation
www.montgomerycountymd.gov/mcdot

WELCOME!



MONTGOMERY COUNTY
DEPARTMENT OF TRANSPORTATION

**FOREST KNOLLS ELEMENTARY SCHOOL
WALKABILITY STUDY FOLLOW UP**

VIRTUAL PUBLIC MEETING

OCTOBER 11, 2023

The Public Meeting is being recorded.

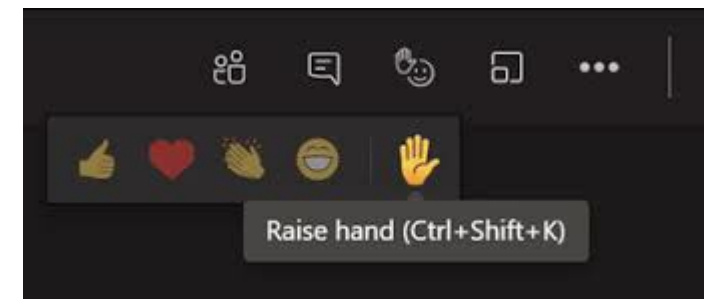


Forest Knolls Elementary School Safe Routes to School (SRTS) Walkability Study



Meeting Rules

- The meeting is recorded, and the recording from tonight meeting will be posted on the project page.
- All participants will be muted until it is their time to provide public comments.
- During open discussion session **please raise your hand**, commenters will be called upon and unmuted in the order in which they registered to speak.
- Spanish translation is provided.



Forest Knolls Elementary School Safe Routes to School (SRTS) Walkability Study



Meeting Agenda

- Introduction
- Walkability Study
- Recommendations
 - Short Term Recommendations
 - Long Term Recommendations
- Open Discussion
- Project Timeline



Forest Knolls Elementary School Safe Routes to School (SRTS) Walkability Study



What is a Walkability Study?

A walkability study is conducted to investigate the condition of existing infrastructure and propose improvements to provide safe and accessible routes for students walking and rolling to school. A study for each school is conducted within the entire "walking area" or "walkshed" as defined by Montgomery County Public Schools.



Walking Areas Defined by MCPS

Elementary Schools: within one 1 mile
Middle Schools: within 1.5 miles
High Schools: within 2 miles



Data Collection

- Observe school arrival and dismissal activities / operations
- Coordinate and solicit feedback from school staff, crossing guards, and neighborhood residents
- Review street networks for pedestrian safety, walkability and relevant traffic and crash data.



Analysis

- Summarize observations
- Identify safety hazards, barriers to walking and gaps in the pedestrian network
- Review pedestrian infrastructure, condition, accessibility



Recommendations

- Prioritize short-term and long-term projects
- Review construction costs and implementation timeline



Forest Knolls Elementary School Safe Routes to School (SRTS) Walkability Study

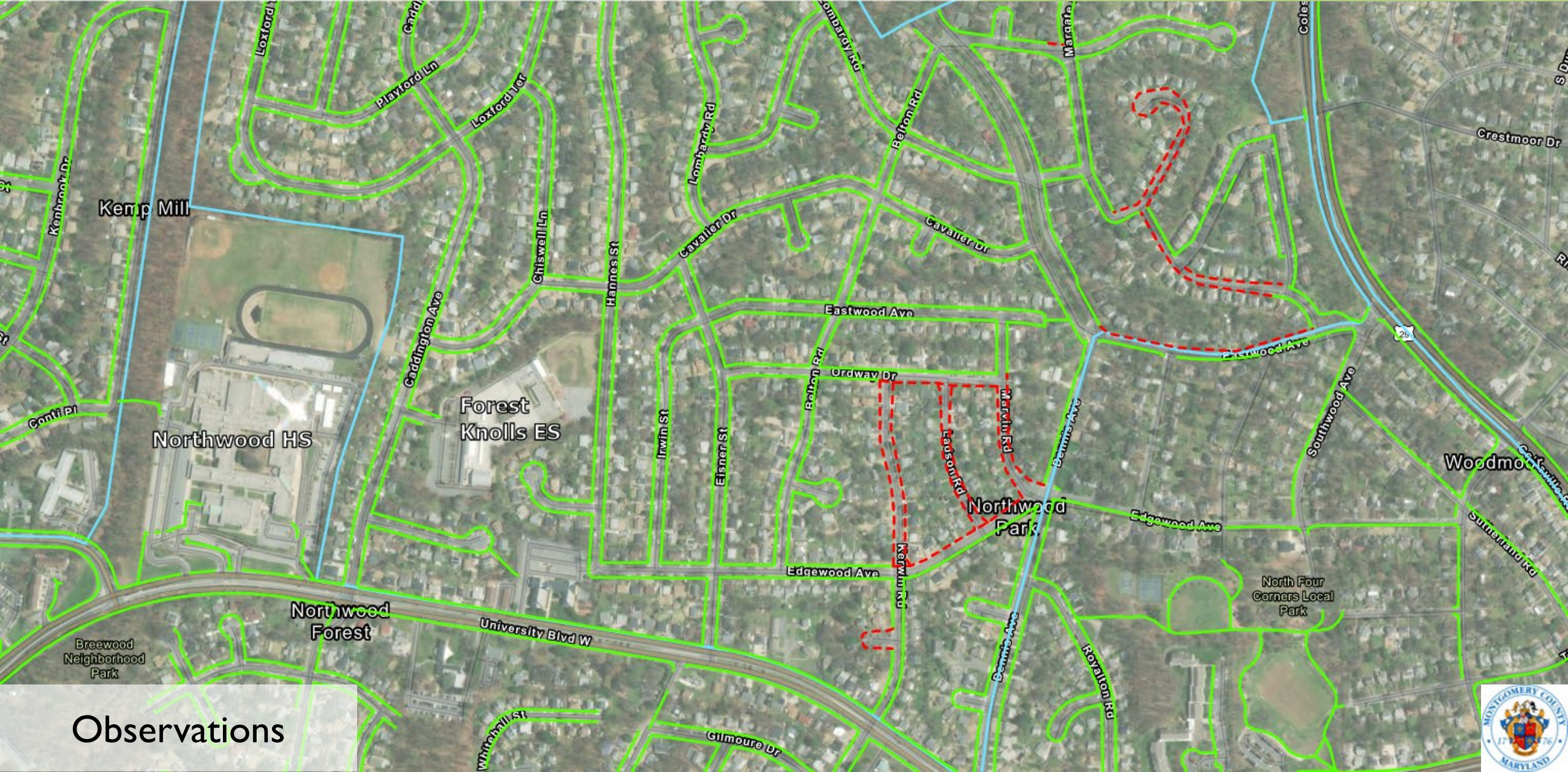


Study Summary

- Completed in 2019
- School Enrollment (2023)
 - 506 students K thru 5th
 - 176 students provided busing
 - 330 students potentially walk/roll



Forest Knolls Elementary School Safe Routes to School (SRTS) Walkability Study



Observations



Forest Knolls Elementary School Safe Routes to School (SRTS) Walkability Study

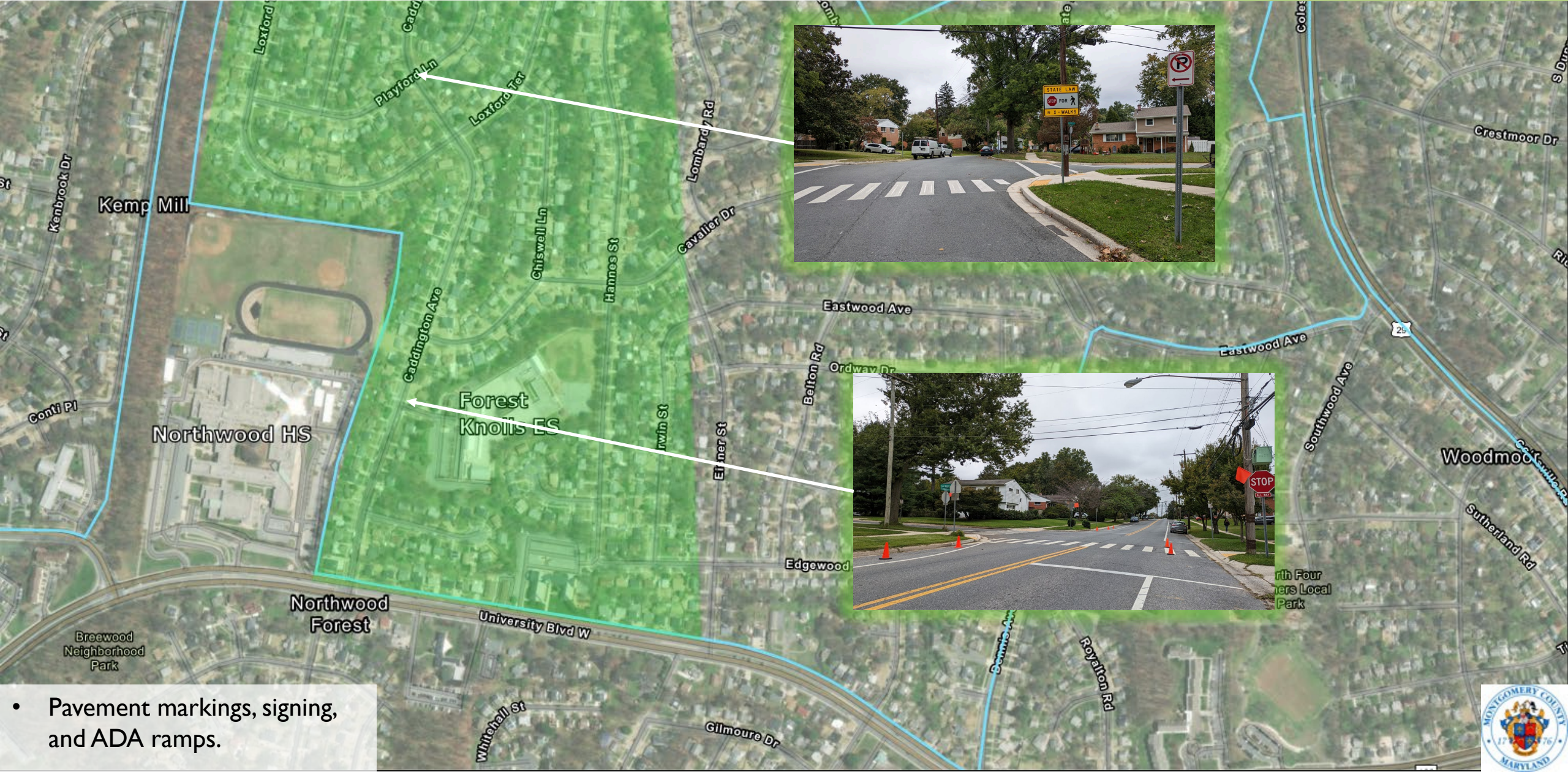


Recommendations

- Short Term
- Long Term



Forest Knolls Elementary School Safe Routes to School (SRTS) Walkability Study



- Pavement markings, signing, and ADA ramps.



Forest Knolls Elementary School Safe Routes to School (SRTS) Walkability Study



- Ramp work complete.
- Crosswalk markings installed.
- Stop signs to be upgraded.
- Missing sidewalk outside of public ROW.

Forest Knolls Elementary School Safe Routes to School (SRTS) Walkability Study



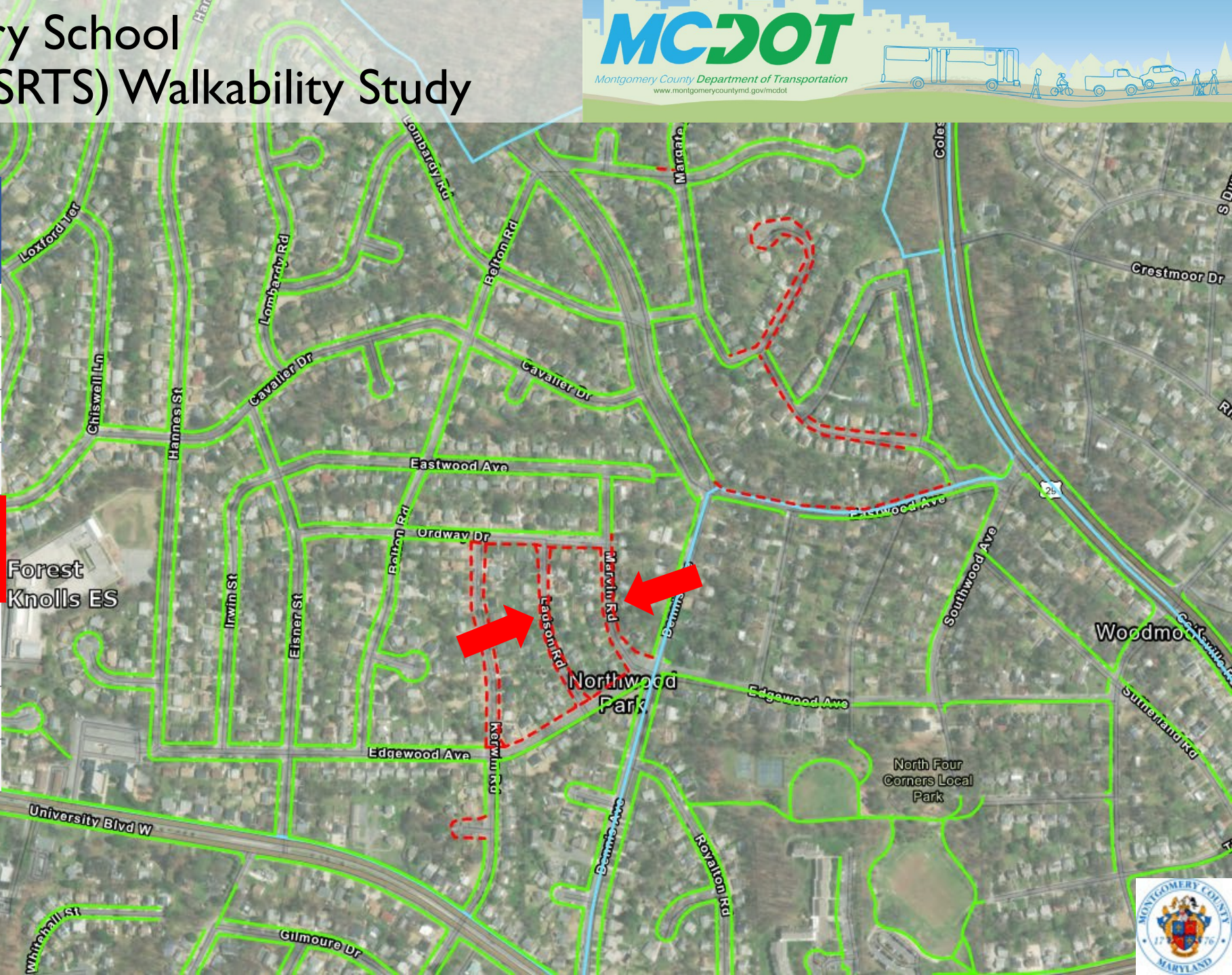
- Ramp work complete.
- Crosswalk markings installed.
- Flex post traffic calming along Dennis Ave.
- Stop signs to be upgraded.
- Missing sidewalk on some north-south segments.



Forest Knolls Elementary School Safe Routes to School (SRTS) Walkability Study



Sidewalk Segment Gap	Sidewalk Length (LF)
Eastwood Ave	930
Edgewood Ave	630
Kerwin Ct	310
Kerwin Rd	1,570
Ladson Rd	1,270
Marvin Rd	1,030
Mountain Quail Rd	1,125
Ordway Dr	500
Snowy Owl Dr	1,570



Sidewalk Gaps



Forest Knolls Elementary School Safe Routes to School (SRTS) Walkability Study



Marvin Road

- Existing ROW provides space for sidewalks and grass buffer
- South side (even house numbers) slopes down away from the road
- Sidewalk would likely impact several trees and existing landscape gardens



- North side (odd house numbers) has utility poles and a fire hydrant, but those would likely fall within the grass buffer
- Only one tree within the north side alignment, but avoidable
- Narrow yield street with curvature



Forest Knolls Elementary School Safe Routes to School (SRTS) Walkability Study



Ladson Road

- Existing ROW provides space for sidewalk (both) and grass buffer (south only)
- South side (even house numbers) is relatively flat
- Sidewalk would likely impact driveways and walkways that would be tied in
- Trees in front of 302 Ladson Rd or 10604 Ordway Dr would need curb extensions to avoid impacts
- North side (odd house numbers) has steep slopes closer to Edgewood Ave
- North side has utility poles and staircases



Forest Knolls Elementary School Safe Routes to School (SRTS) Walkability Study



Kerwin Road

- Existing ROW provides space for sidewalk (both) and grass buffer (south only)
- North side (odd house numbers) has steep slopes closer to Edgewood Ave
- Street trees, utility poles, and landscaping features are present close to the curbs on both sides of the street



- Has greater elevation change than both Marvin and Ladson
- Yield street with vertical and horizontal curvature limits sight lines for all road users
- Alternative could narrow street and place sidewalk within existing road width



Forest Knolls Elementary School Long Term Recommendations



Forest Knolls Elementary School Safe Routes to School (SRTS) Walkability Study



Lockridge Dr

- Presently lacks pedestrian connectivity



Forest Knolls Elementary School Safe Routes to School (SRTS) Walkability Study



Dennis Ave at Edgewood Ave / Marvin Rd

- Skewed
- 5 legs
- Unclear directions of travel



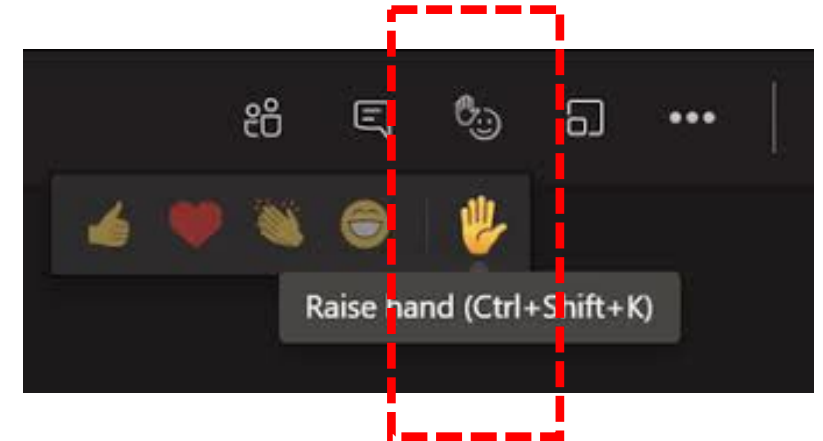
Forest Knolls Elementary School Safe Routes to School (SRTS) Walkability Study



Open Discussion

- **Sidewalk gaps**
- **Potential intersection improvements**
- **Other considerations?**

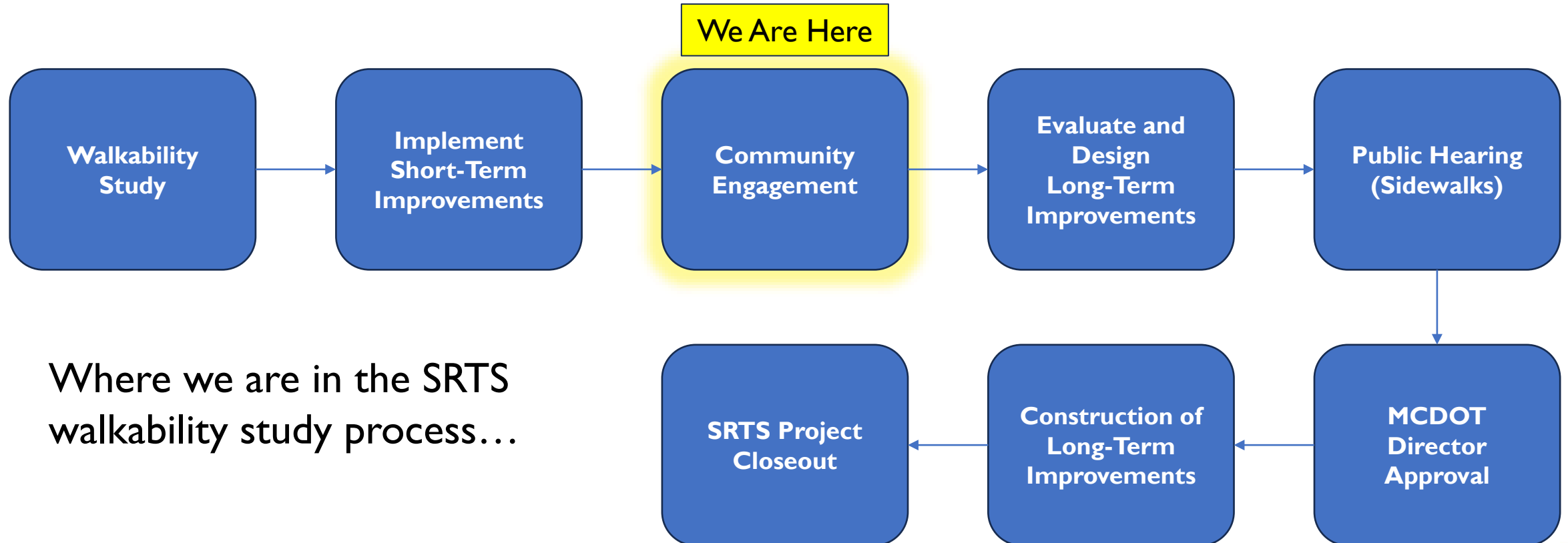
To provide your comment, please raise your hand and we will unmute.



Forest Knolls Elementary School Safe Routes to School (SRTS) Walkability Study



Timeline



Where we are in the SRTS walkability study process...



Forest Knolls Elementary School Safe Routes to School (SRTS) Walkability Study



THANK YOU FOR ATTENDING Community Feedback

If you wish to provide any written feedback, please submit your comments by:

Wednesday, October 25, 2023, by 5:00pm

Submissions can be made via:

Email: walkyourway@montgomerycountymd.gov or via regular mail:

Safe Routes to School Program

ATTN: Nima Upadhyay

100 Edison Park Drive, 4th FL

Gaithersburg, Maryland 20878

