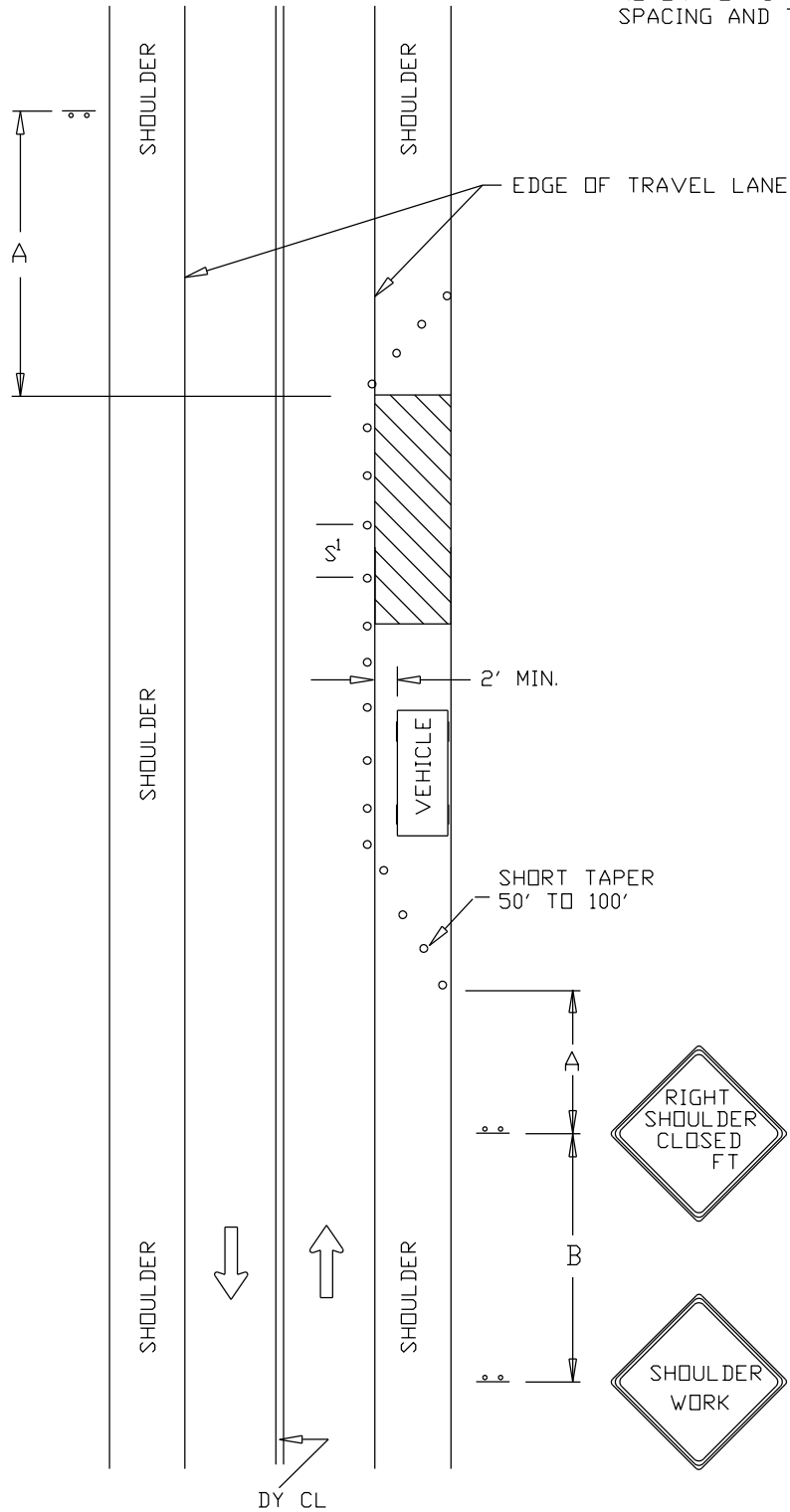


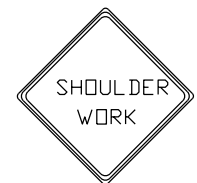
REFER TO TCP 100.01 FOR SIGN
SPACING AND TAPER LENGTHS



W20-1 (MOD)
48" x 48"



W21-5b
48" x 48"



W21-5
48" x 48"



DIRECTION OF TRAFFIC



SIGN



WORK SITE



TRAFFIC DRUMS
OR CONES

$S^1=30$ FT.

$S^2=10$ FT.

REVISION BY	DATE	APPROVED

DATE	07-01-16	TRAFFIC OPERATIONS SECTION MONTGOMERY COUNTY, MARYLAND
DES. BY	MCDPWT	
DRAWN BY	TCLE	TRAFFIC CONTROL FOR SHOULDER WORK
SCALE	NTS	APPROVED
		CHIEF, TRAFFIC OPERATIONS SECTION
		STANDARD TCP-101.01 ____ OF ____ SHEETS