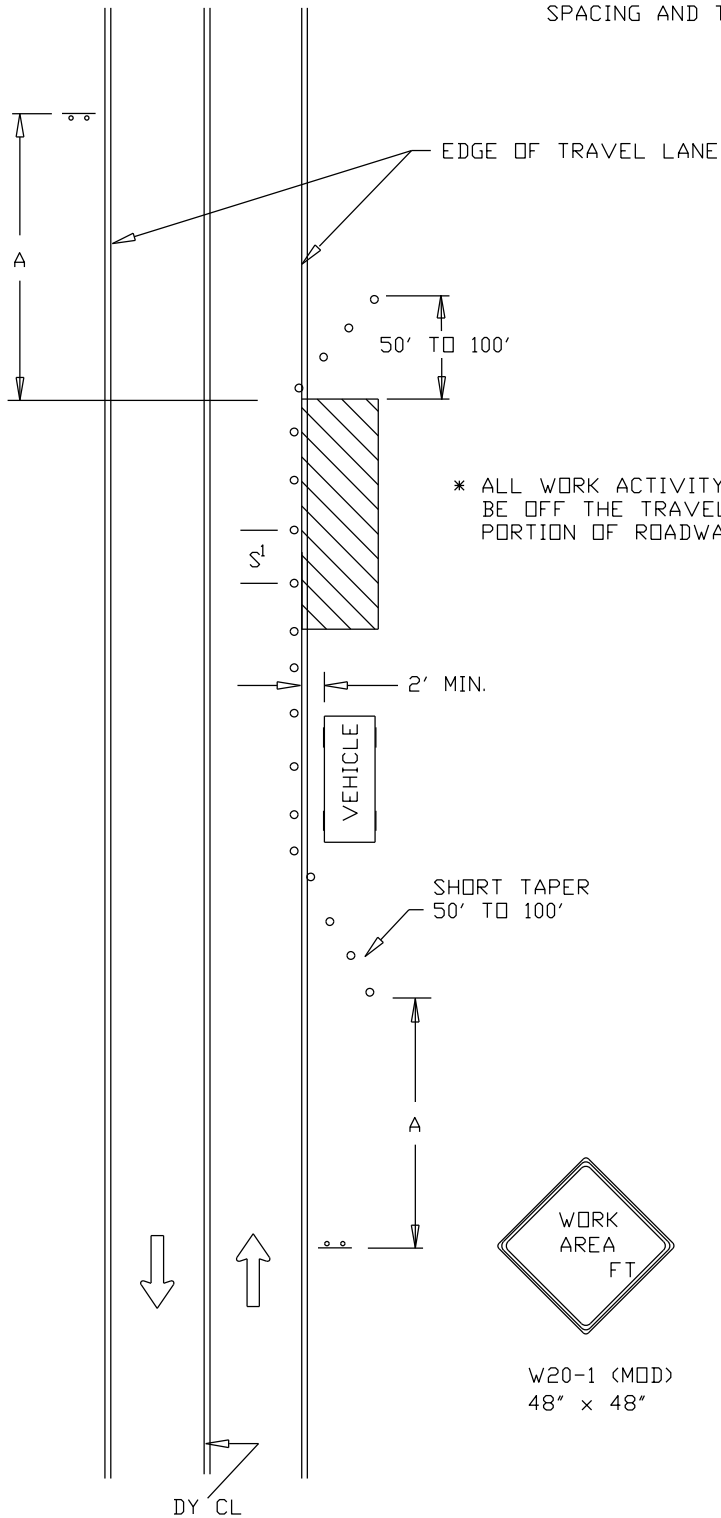


REFER TO TCP 100.01 FOR SIGN
SPACING AND TAPER LENGTHS



W20-1 (MOD)
48" x 48"



* ALL WORK ACTIVITY TO
BE OFF THE TRAVELED
PORTION OF ROADWAY



W20-1 (MOD)
48" x 48"



DIRECTION OF TRAFFIC



SIGN



WORK SITE



TRAFFIC DRUMS
OR CONES

$S^1=30$ FT.

$S^2=10$ FT.

REVISION BY	DATE	APPROVED

DATE	07-01-16	TRAFFIC OPERATIONS SECTION MONTGOMERY COUNTY, MARYLAND
DES. BY	MCDPWT	TRAFFIC CONTROL FOR WORK ACTIVITY OFF THE ROAD
DRAWN BY	TCLE	APPROVED
SCALE	NTS	CHIEF, TRAFFIC OPERATIONS SECTION
		STANDARD TCP-101.02 ____ OF ____ SHEETS