

REFER TO TCP 100.01 FOR SIGN
SPACING, TAPER LENGTHS AND
BUFFER ZONE LENGTHS



DIRECTION OF TRAFFIC



SIGN



WORK SITE



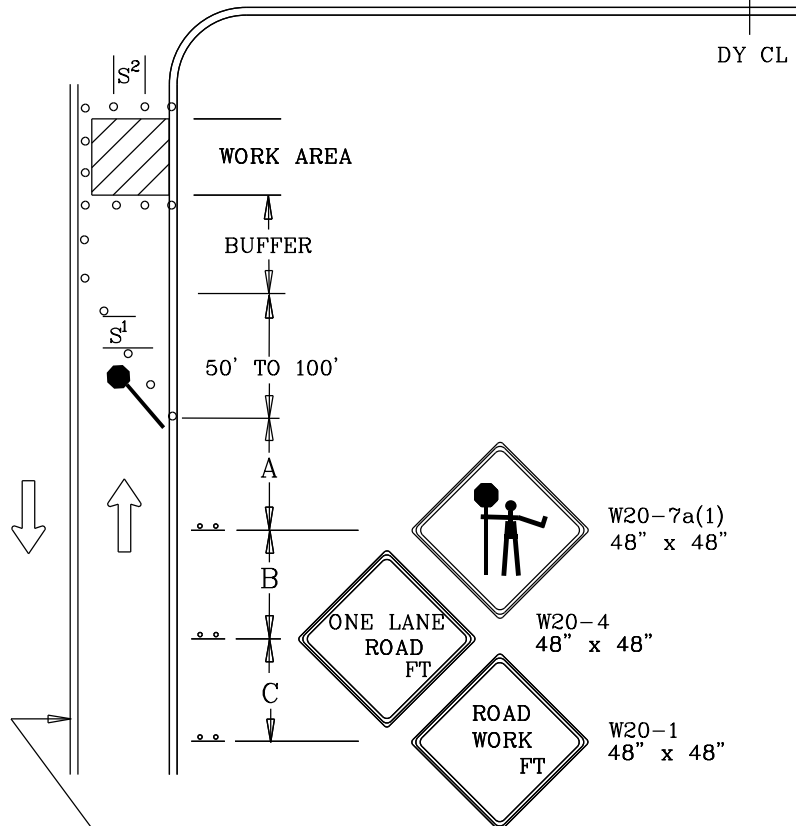
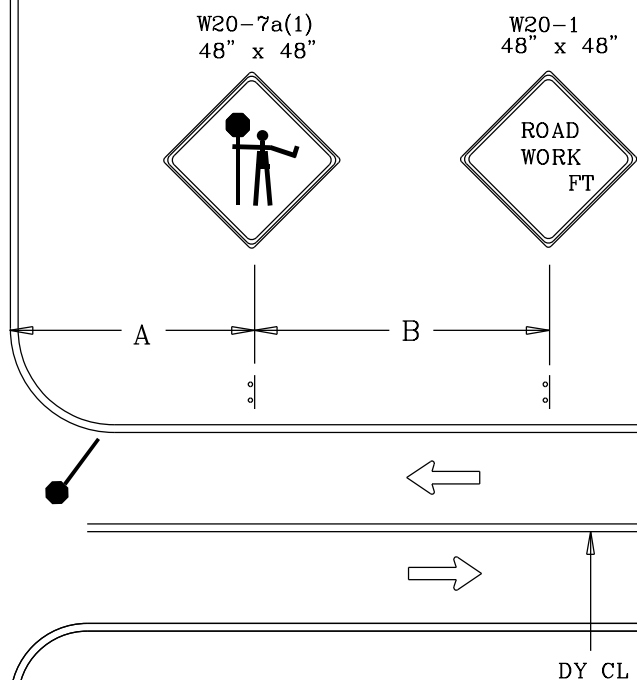
FLAGGER



TRAFFIC DRUMS
OR CONES

$$S^1 = 30 \text{ FT.}$$
$$S^2=10 \text{ FT.}$$

NOTE: ACCESS POINTS WITHIN LANE CLOSURE
SHALL BE CONTROLLED BY FLAGGER(S)



DÝ CL

REVISION BY	DATE	APPROVED

DATE	TRAFFIC OPERATIONS SECTION MONTGOMERY COUNTY, MARYLAND	
07-01-16		
DES. BY	FLAGGING CONTROL AT 4 - LEG INTERSECTION (2)	
MCDPWT		
DRAWN BY	APPROVED	
TCLE		
SCALE	_____ CHIEF, TRAFFIC OPERATIONS SECTION	
NTS	STANDARD TCP-105.02 ____ OF ____ SHEETS	