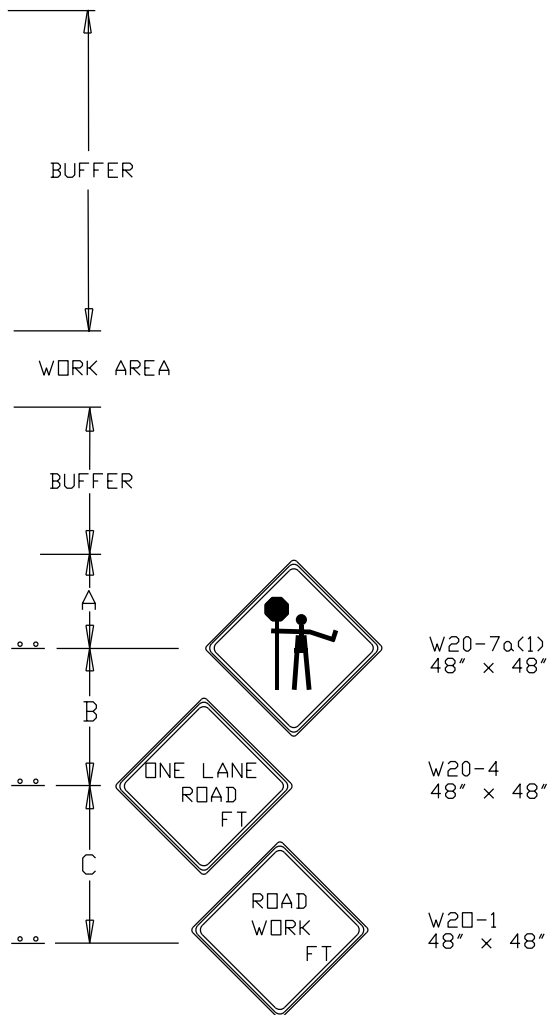


NOTE: ACCESS POINTS WITHIN LANE CLOSURE SHALL BE CONTROLLED BY FLAGGER(S)

REFER TO TCP 100.01 FOR SIGN SPACING, TAPER LENGTHS AND BUFFER ZONE LENGTHS



- DIRECTION OF TRAFFIC
- SIGN
- WORK SITE
- FLAGGER
- TRAFFIC DRUMS OR CONES
- $S^1=30$ FT.
- $S^2=10$ FT.

REVISION BY	DATE	APPROVED

DATE	07-01-16	TRAFFIC OPERATIONS SECTION MONTGOMERY COUNTY, MARYLAND
DES. BY	MCDPWT	
DRAWN BY	TCLE	FLAGGING CONTROL AT 3 - LEG INTERSECTION (1)
SCALE	NTS	APPROVED
		CHIEF, TRAFFIC OPERATIONS SECTION
		STANDARD TCP-105.03 OF SHEETS