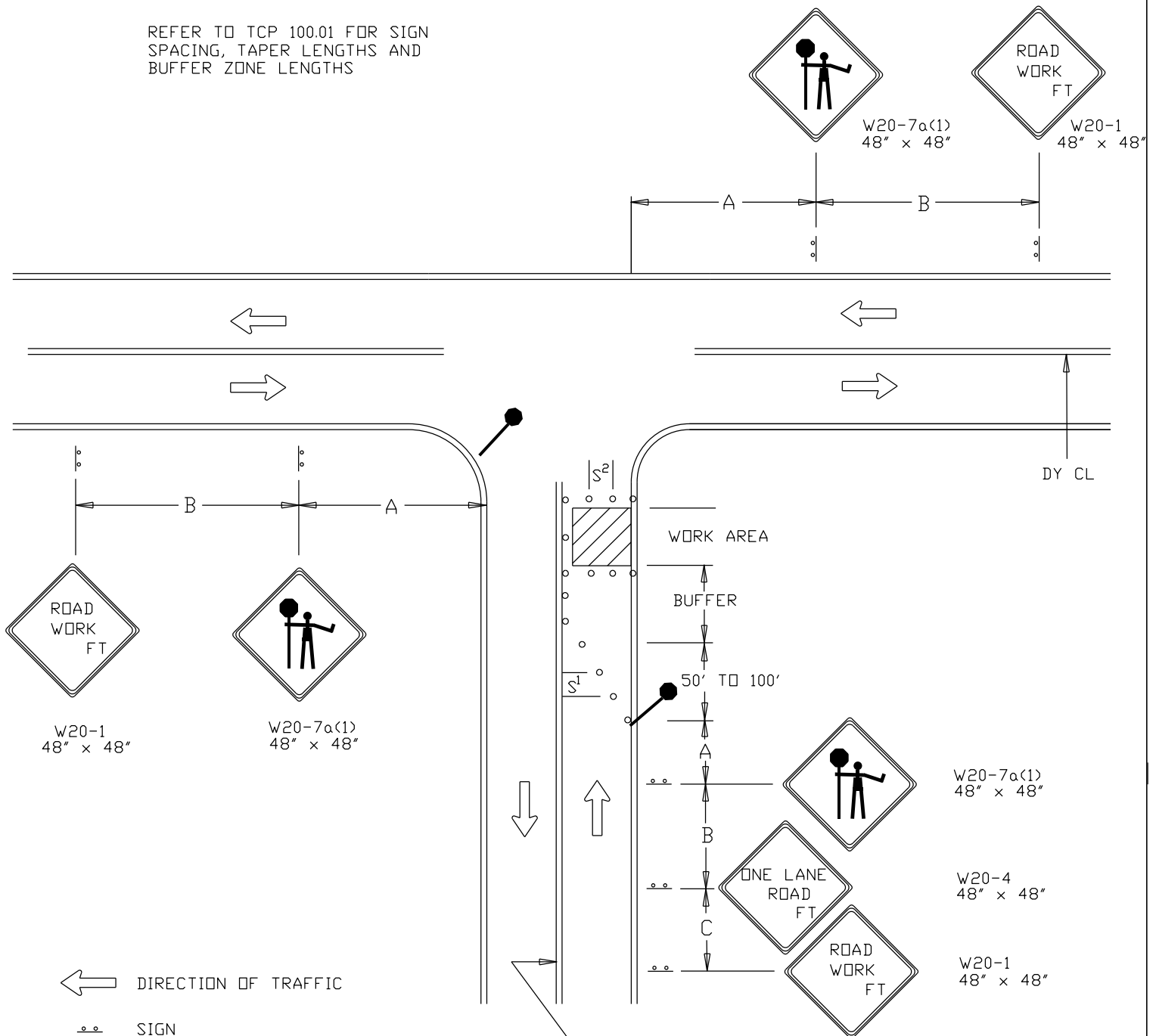


NOTE: ACCESS POINTS WITHIN LANE CLOSURE
SHALL BE CONTROLLED BY FLAGGER(S)

REFER TO TCP 100.01 FOR SIGN
SPACING, TAPER LENGTHS AND
BUFFER ZONE LENGTHS



← DIRECTION OF TRAFFIC

—•— SIGN

▨ WORK SITE

● FLAGGER

○ TRAFFIC DRUMS
OR CONES

$S^1=30$ FT.

$S^2=10$ FT.

REVISION BY	DATE	APPROVED

DATE 07-01-16	TRAFFIC OPERATIONS SECTION MONTGOMERY COUNTY, MARYLAND
DES. BY MCDPWT	
DRAWN BY TCLE	FLAGGING CONTROL AT 3 - LEG INTERSECTION (3)
SCALE NTS	APPROVED _____ CHIEF, TRAFFIC OPERATIONS SECTION
	STANDARD TCP-105.05 ____ OF ____ SHEETS