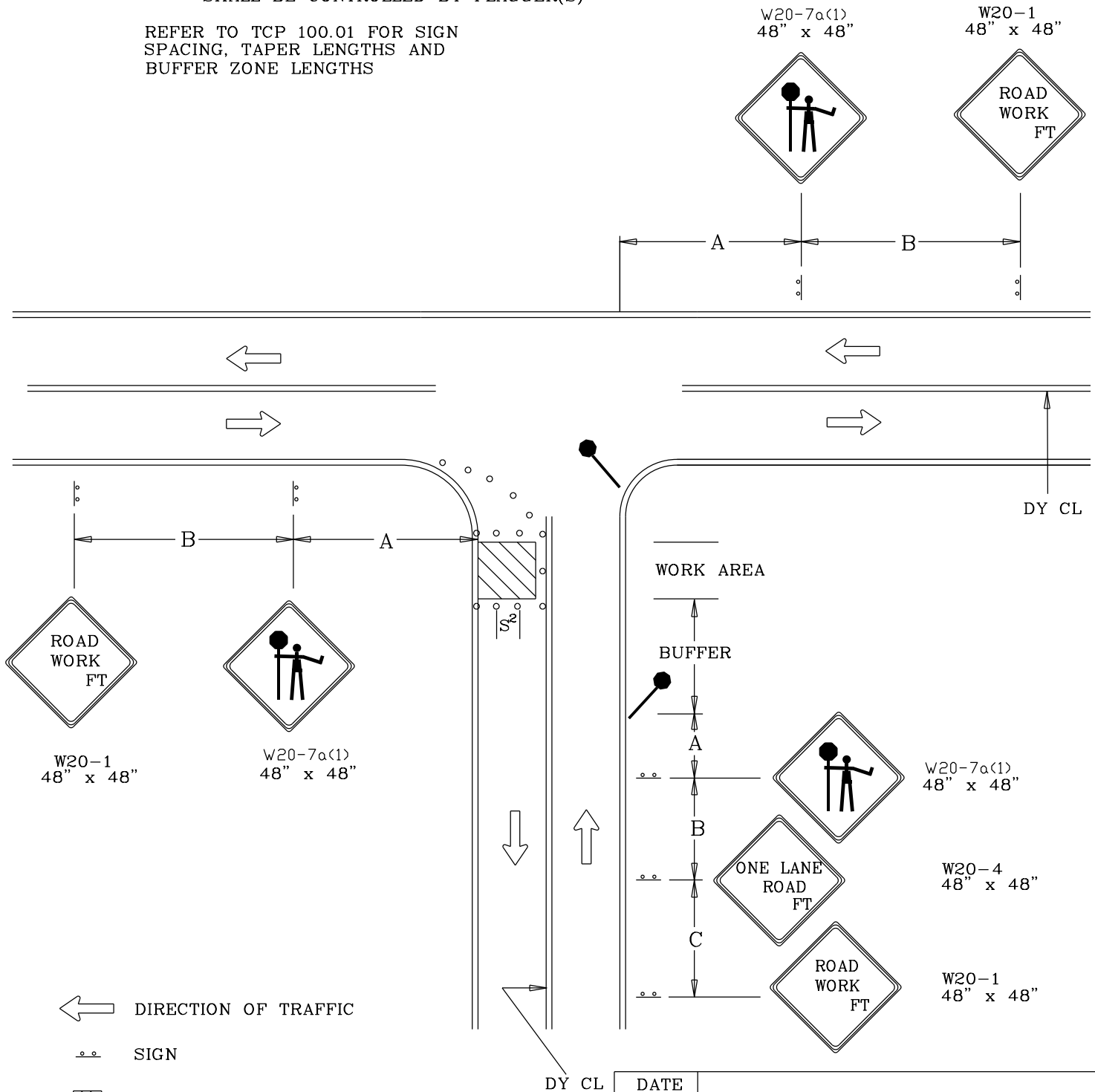


NOTE: ACCESS POINTS WITHIN LANE CLOSURE
SHALL BE CONTROLLED BY FLAGGER(S)

REFER TO TCP 100.01 FOR SIGN
SPACING, TAPER LENGTHS AND
BUFFER ZONE LENGTHS



REVISION BY	DATE	APPROVED

DATE	07-01-16
DES. BY	MCDPWT
DRAWN BY	TCLE
SCALE	NTS
TRAFFIC OPERATIONS SECTION MONTGOMERY COUNTY, MARYLAND	
FLAGGING CONTROL AT 3 - LEG INTERSECTION (4)	
APPROVED	
CHIEF, TRAFFIC OPERATIONS SECTION	
STANDARD TCP-105.06 ____ OF ____ SHEETS	