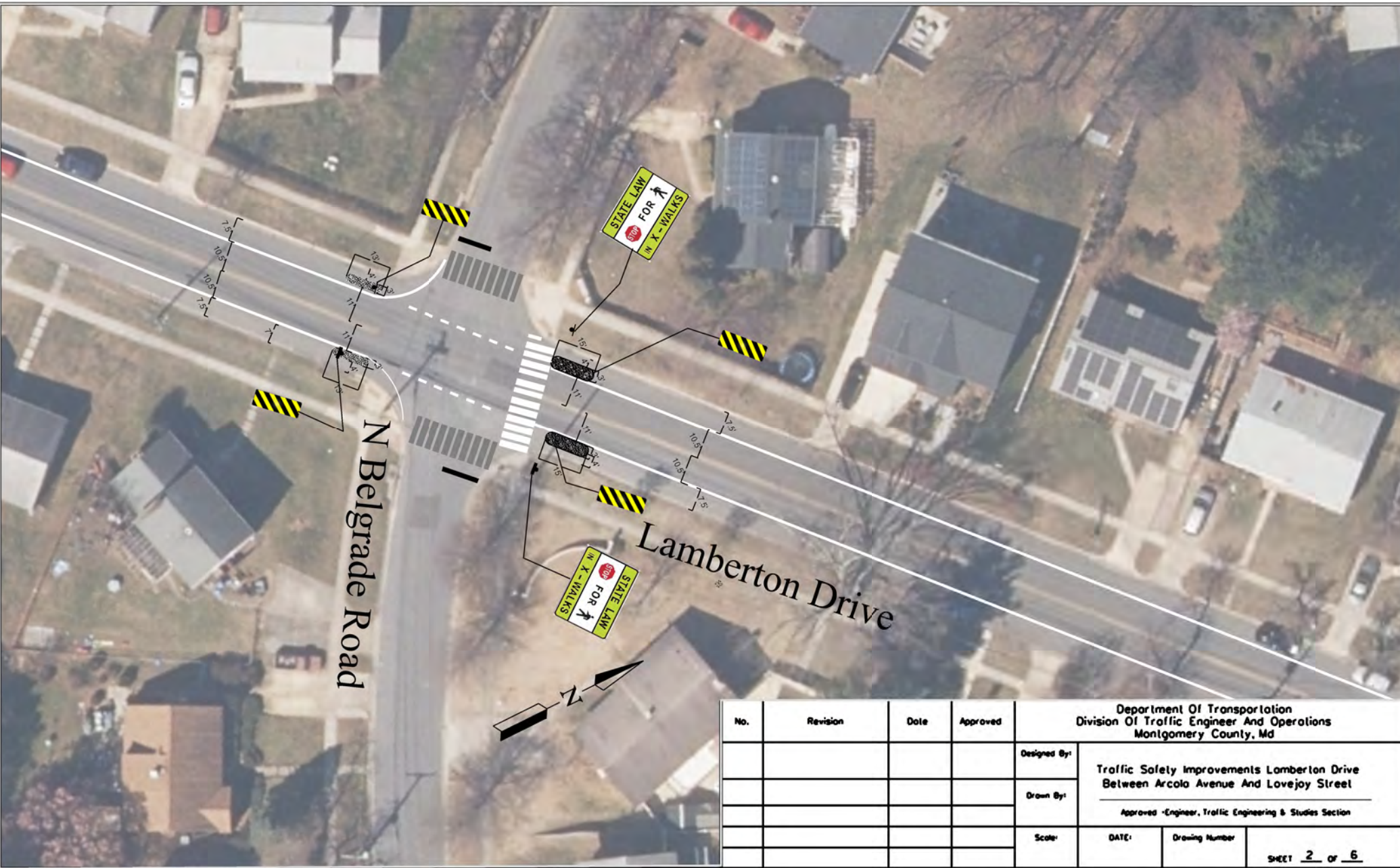




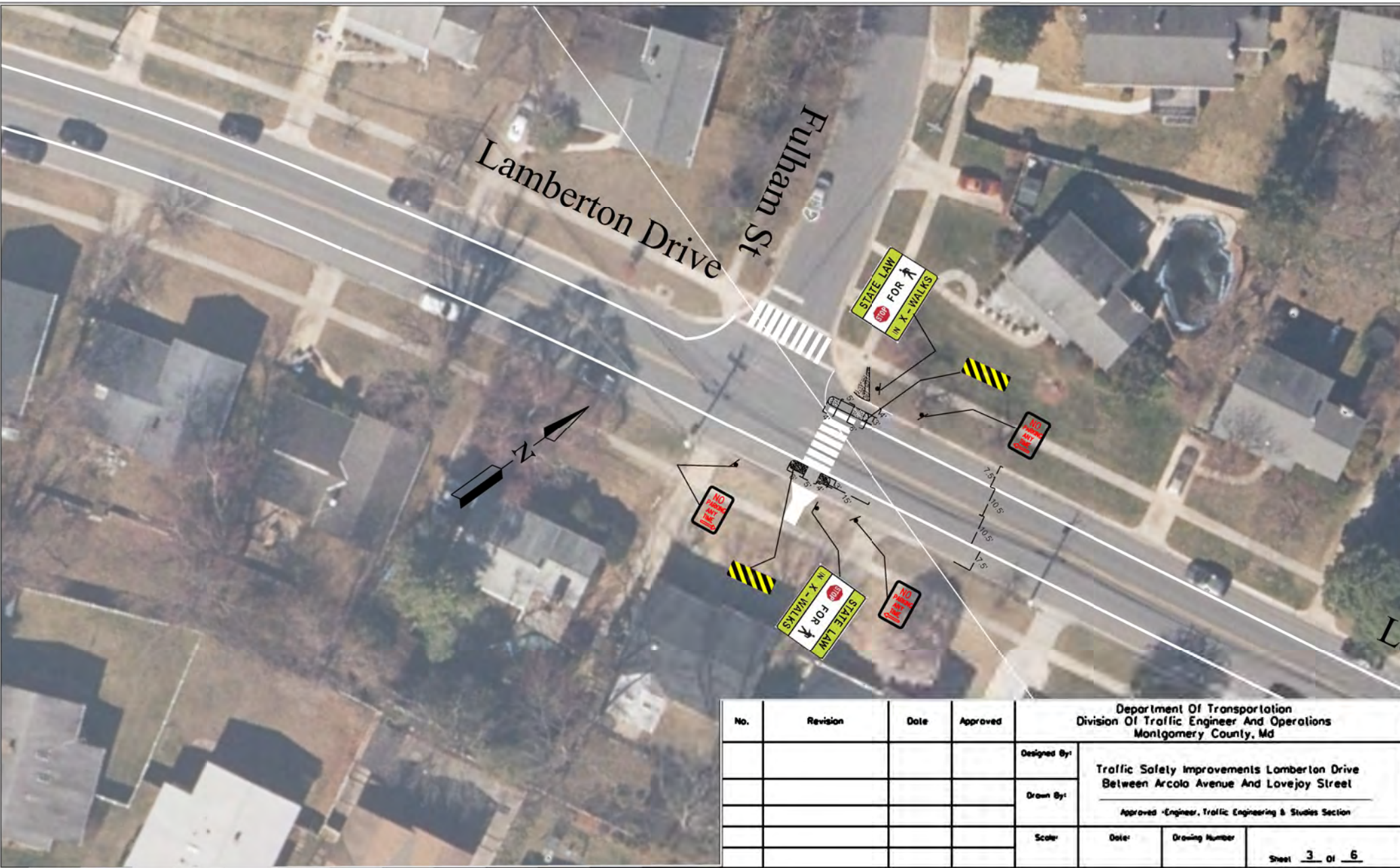
No.	Revision	Date	Approved	Department Of Transportation Division Of Traffic Engineer And Operations Montgomery County, Md			
				Designed By:	Traffic Safety Improvements Lomberton Drive Between Arcola Ave And Lovejoy Street  Approved -Engineer, Traffic Engineering & Studies Section		
				Drawn By:			
				Scale:	DATE:	Drawing Number	SHEET 1 OF 6





				Department Of Transportation Division Of Traffic Engineer And Operations Montgomery County, Md			
No.	Revision	Date	Approved	Designed By:	Traffic Safety Improvements Lamberton Drive Between Arcola Avenue And Lovejoy Street		
				Drawn By:			
					Approved -Engineer, Traffic Engineering & Studies Section		
				Scale:	DATE:	Drawing Number	SHEET <u>2</u> of <u>6</u>





				Department Of Transportation Division Of Traffic Engineer And Operations Montgomery County, Md			
No.	Revision	Date	Approved	Designed By:	Traffic Safety Improvements Lamberton Drive Between Arcola Avenue And Lovejoy Street		
				Drawn By:			
					Approved -Engineer, Traffic Engineering & Studies Section		
				Scale:	Date:	Drawing Number	Sheet <u>3</u> Of <u>6</u>





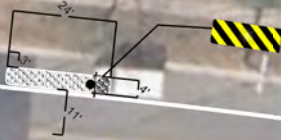
Rockbridge Rd

				Department Of Transportation Division Of Traffic Engineer And Operations Montgomery County, Md			
No.	Revision	Date	Approved	Designed By:	Traffic Safety Improvements Lomberton Drive Between Arcola Avenue And Lovejoy Street		
				Drawn By:			
					Approved -Engineer, Traffic Engineering & Studies Section		
				Scale:	Date:	Drawing Number	Sheet 4 OF 6



Bromley St

Lamberton Dr



Department Of Transportation Division Of Traffic Engineer And Operations Montgomery County, Md				Traffic Safety Improvements Lamberton Drive Between Arcola Avenue And Lovejoy Street		
No.	Revision	Date	Approved	Designed By:	Approved -Engineer, Traffic Engineering & Studies Section	
				Drawn By:		
				Scale:	Date:	Drawing Number
						Sheet <u>5</u> Of <u>6</u>





Department Of Transportation Division Of Traffic Engineer And Operations Montgomery County, Md				Traffic Safety Improvements Lamberton Drive Between Arcola Avenue And Lovejoy Street		
No.	Revision	Date	Approved	Designed By:	Approved -Engineer, Traffic Engineering & Studies Section	
				Drawn By:		
				Scale:	Date:	Drawing Number
						Sheet <u>6</u> Of <u>6</u>