

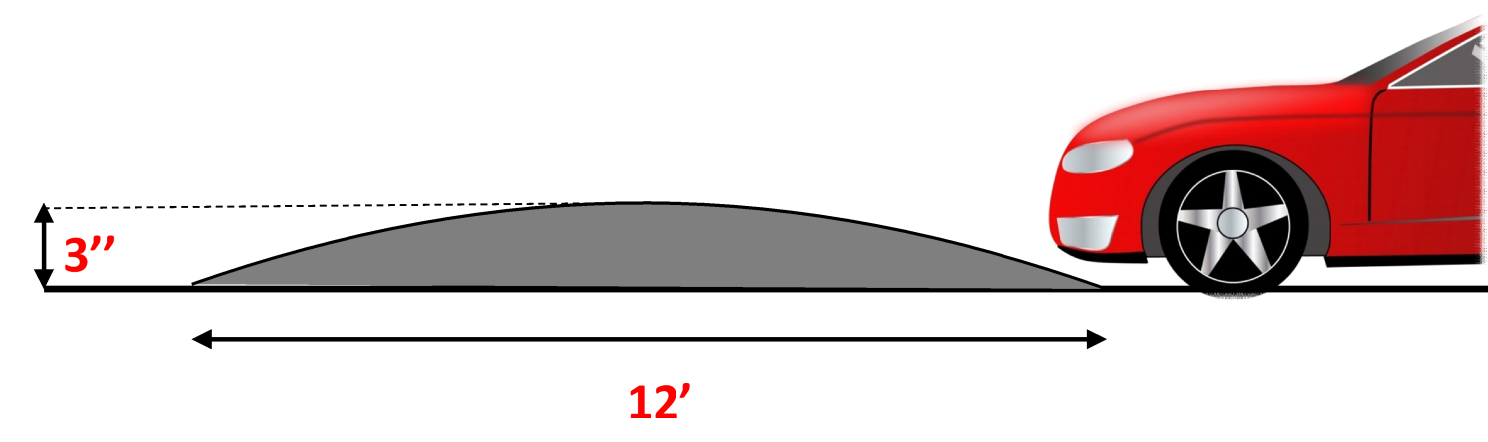
Speed Hump # 1

SHEET NO.

1 OF 2



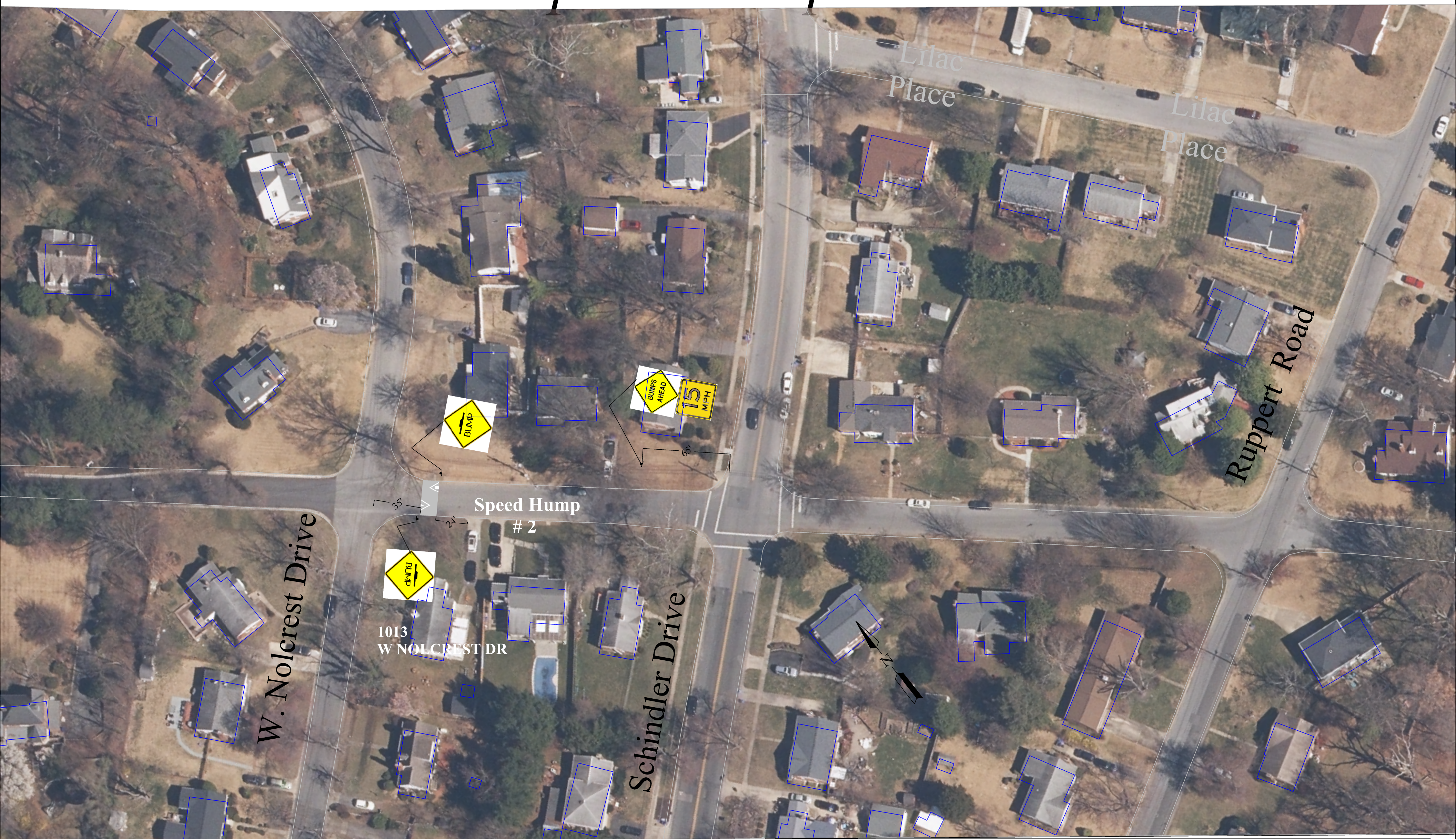
All Speed Humps are Parabolic as shown below



Distance in the drawing are approximate

						Traffic Engineering and Operations Montgomery County Maryland
						Gatewood Avenue Speed Hump Location Plan
						Approved - Area Engineer, Traffic Engineering Studies Section

Speed Hump # 2



					Traffic Engineering and Operations Montgomery County Maryland
					Gatewood Avenue Speed Hump Location Plan
					Approved - Area Engineer, Traffic Engineering Studies Section