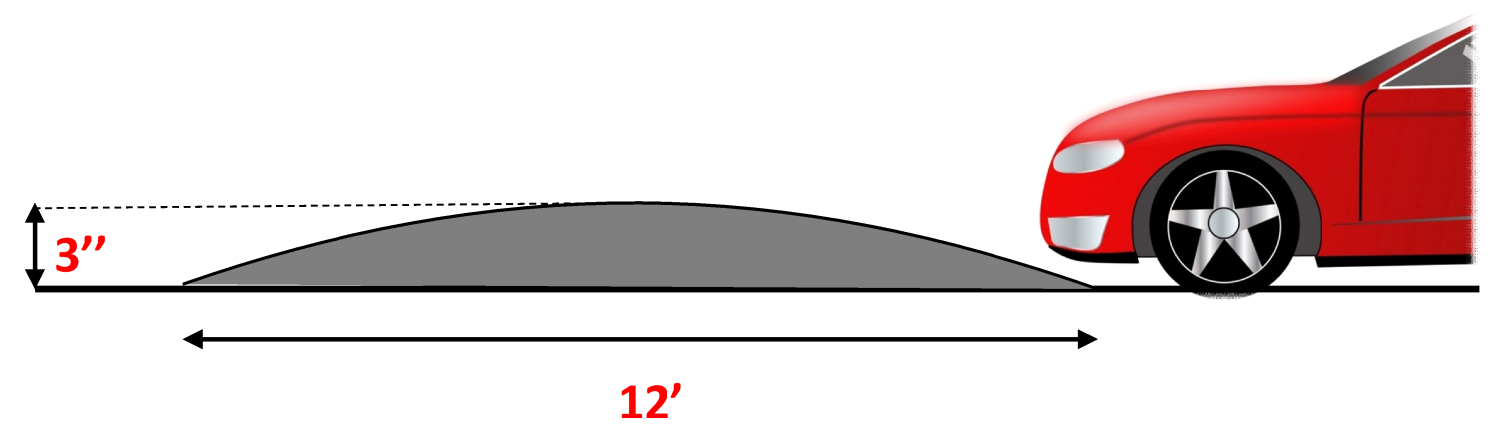


Speed Humps # 1 & 2



All Speed Humps are Parabolic as shown below



Distance in the drawing are approximate

Traffic Engineering and Operations
Montgomery County Maryland

Mcceney Avenue
Speed Hump Location Plan

Approved - Area Engineer, Traffic Engineering Studies Section

Speed Hump # 3

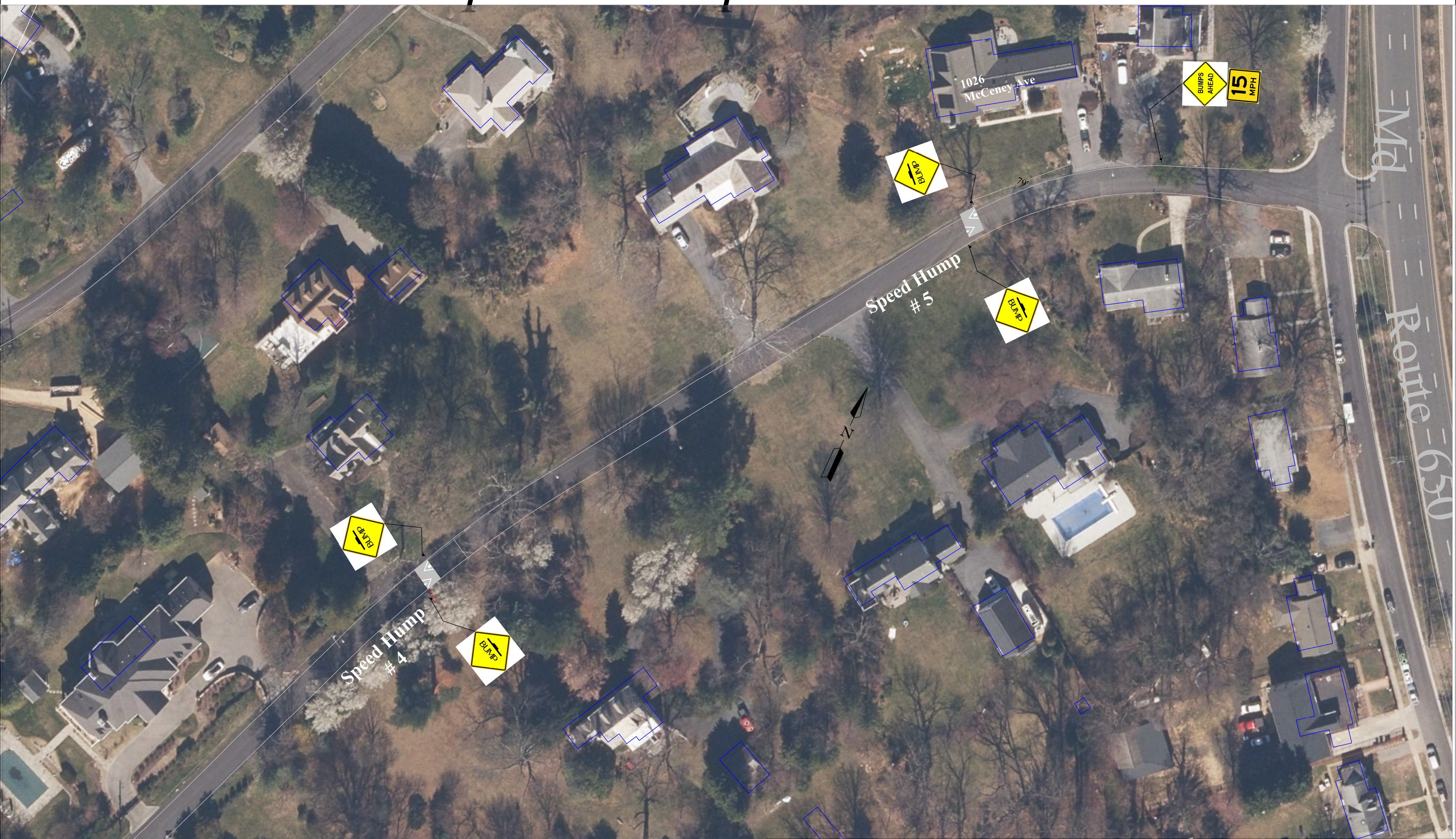


Traffic Engineering and Operations
Montgomery County Maryland

Mcceney Avenue
Speed Hump Location Plan

Approved - Area Engineer, Traffic Engineering Studies Section

Speed Humps # 4 & 5



Traffic Engineering and Operations
Montgomery County Maryland

McCeney Avenue
Speed Hump Location Plan

Approved - Area Engineer, Traffic Engineering Studies Section