

# SCHOOL-RELATED CRASH REVIEW

**Location:** Watkins Mill Road at Stedwick Road

**Crash Date:** February 26, 2024

**Crash Time:** Approximately 5:40 PM

**Local Case No.:** 240009398

**Review Date:** December 17, 2024

## **Description of Incident**

On Monday, February 26, 2024, at approximately 5:40 PM, a pedestrian was traveling across the west leg of the intersection in the crosswalk with a walk signal. A motorist traveling northbound along Watkins Mill Road, with a green signal, turned left onto westbound Stedwick Road and struck the pedestrian in the crosswalk. The crash report stated that the motorist “failed to give full time and attention” in relation to the crash. Weather conditions were clear, the roadway surface was dry, and it was dusk. The pedestrian suffered minor injuries. **Figure 2** illustrates the crash location and direction of pedestrian and vehicle travel.

## **Location and Site Description**

The subject location is the intersection of Watkins Mill Road at Stedwick Road. Montgomery Village Middle School is located along Watkins Mill Road, one block north of the subject location. The subject location also falls within the watershed for Watkins Mill Elementary School (ES), Stedwick Elementary School (ES), and Watkins Mill High School (HS). Montgomery Village MS, located at 19300 Watkins Mill Road, has a current enrollment of 773 students in grades 6<sup>th</sup> through 8<sup>th</sup>.

### **Montgomery Village School (MS)**

The majority of student arrivals are between 7:30 AM and 8:00 AM and dismissal occurs between 3:00 PM and 3:20 PM.

### **Watkins Mill Road**

Watkins Mill Road is classified as a “Town Center Boulevard” between Club House Road and Stedwick Road and is classified as a “Boulevard” between Stedwick Road and MD 355 (Frederick Rd). The road is approximately 40 feet wide and generally runs in the north-south direction along its approximately 4.2-mile alignment between Clopper Road to the south and Blunt Road to the north. Watkins Mill Road has sidewalks with a grass buffer along both sides of the street within the vicinity of the subject intersection.

In the southbound direction, a static 35 MPH speed limit sign is located approximately 1,800 feet north of the subject intersection. Additionally, a high-intensity beacon (HIB) with a speed limit posting of 25 MPH is located approximately 1,500 feet north of the subject intersection. In the northbound direction, a static 35 MPH speed limit sign is posted approximately 1.0 mile south of the subject intersection. An HIB with a speed limit posting of 25 MPH is located approximately 150 feet north of the subject intersection. On-street parking restrictions vary between Stedwick Road and Club House Road. Refer to **Figure 1** in the attachments for additional details of the Watkins Mill Road segment.

### **Watkins Mill Road at Stedwick Road**

The intersection of Watkins Mill Road at Stedwick Road is a signalized, four-leg intersection. Stedwick Road is classified as a “Neighborhood Connector” to the east and a town center street to the west of the

subject intersection. Americans with Disabilities (ADA)-compliant pedestrian ramps are provided on all corners of the intersection and include continental crosswalk markings.

Signal operations along the Watkins Mill Road approaches include northbound left turns operating with “permissive” phasing, while the southbound left turns operate in exclusive-permissive phasing. Stedwick Road eastbound left turns operate with permissive phasing while the westbound left turns operate in exclusive-permissive phasing. Leading pedestrian intervals (LPI) are provided for each crossing but are pushbutton activated.

The Watkins Mill Road corridor was reviewed between MD 355 (Frederick Road) to the south and Cove Ledge Court to the north. This corridor was evaluated to identify potential infrastructure, maintenance activities, and road-user behaviors that contribute to increased safety risk at and in the vicinity of the school-related crash location. Please refer to **Figure 1** for additional information such as curb restrictions, traffic control device placement, and road user behaviors.

### **Crash History**

Crash data obtained from dataMontgomery shows twenty-two (22) incidents occurred within the influence of the Watkins Mill Road at Stedwick Road intersection, between May 2019 and September 2024. Six (6) collisions involved pedestrians and two (2) involved bicyclists. Thirteen (13) of the collisions resulted in injuries. The incidents are illustrated on **Figure 3**.

### **Field Observations and Findings**

Field observations were performed on Thursday, August 22, 2024, at approximately 12pm. Weather conditions were clear, and the roadway surface was dry. High pedestrian (all four legs) and automobile activity were recorded at this intersection during the time of observation. Conflicts were observed between pedestrians and turning vehicles. Motorists were observed making aggressive left turns during all red phases when the LPI provided the right of way to pedestrians.

### **Recommendations**

Conditions at the intersection may be improved by countermeasures outlined in the recommendations below.

1. Consider installing centerline hardening to slow left-turning vehicles and increase visibility of pedestrians in the crosswalk. This forces motorists to focus on the conflicting crosswalk in addition to opposing thru traffic.
2. Consider revising signal phasing to address confusion and conflicts resulting from Exclusive/Permissive to Exclusive.

## Site Photograph



**Photo 1. West leg of intersection where crash occurred, looking east along Stedwick Road.**





Figure 1 - Watkins Mill Road Corridor Observations



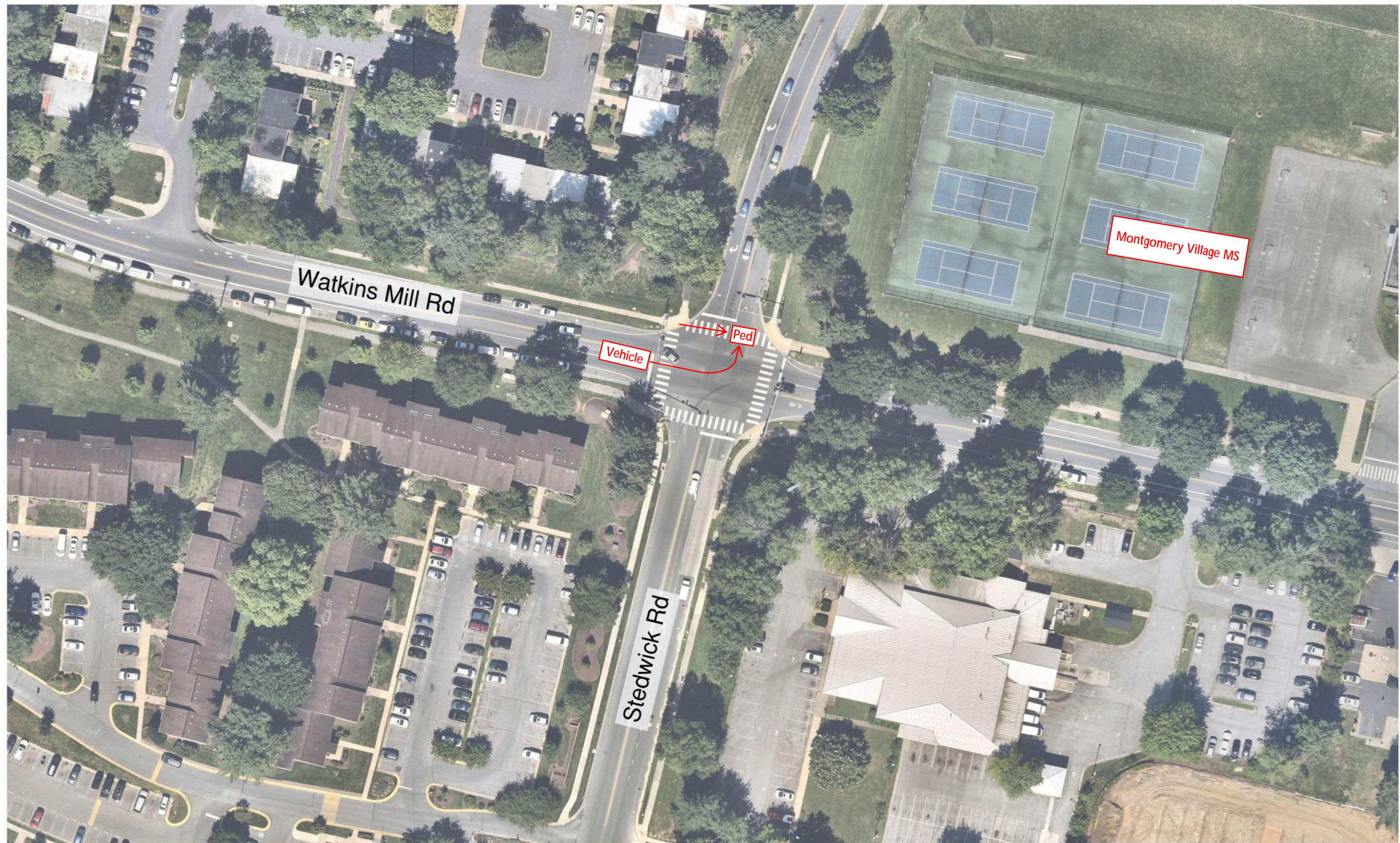


Figure 2 - Crash Diagram



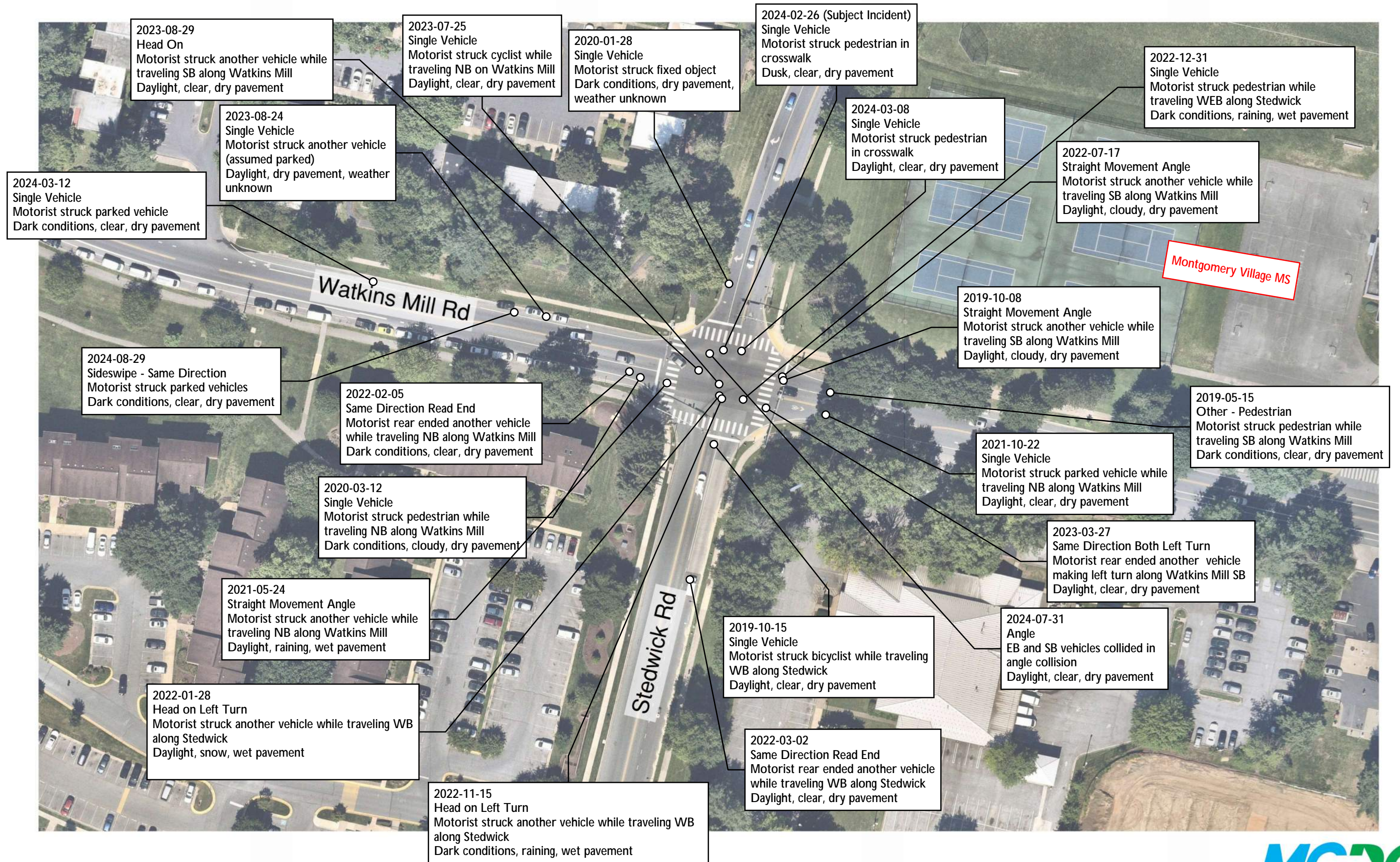


Figure 3 - Crash History (2019-2024)