

SAFE STREETS ACT 2023 - CRASH REVIEW

Location: Heritage Hills Drive at Briars Road/Gold Mine Road

Crash Date: August 29, 2024

Crash Time: Approximately 3:51 PM

Local Case No.: 240040952

Review Date: January 14, 2025

Description of Incident

On Thursday, August 29, 2024, at approximately 3:51 PM, a motorist traveling westbound along Heritage Hills Drive collided with a student who was riding on a non-motorized scooter. According to the crash report, the scooter rider failed to stop at the stop sign. Weather conditions were clear, the roadway surface was dry, and it was daylight. The responding officer reported that the scooter operator may have sustained injuries as a result of the crash.

Figure 2 illustrates the crash location and direction of scooter rider and automobile in conjunction with the crash.

Location and Site Description

The crash occurred at the intersection of Heritage Hills Drive at Briars Road/Gold Mine Road. Greenwood Elementary School (ES) is located at 3336 Gold Mine Rd, approximately 900 feet south of the subject intersection. Greenwood ES has a current enrollment of 539 students in Pre-K through 5th grade.

Greenwood Elementary School

Most student arrivals occur between 8:40 AM and 9:00 AM and dismissals occur between 3:25 PM and 3:40 PM.

Heritage Hills Drive

Heritage Hills Drive is a two-lane neighborhood connector, is 24 feet wide, and is generally oriented in the east-west direction. Heritage Hills Drive has 4-foot-wide grass-buffered sidewalks along both sides of the street. The posted speed limit on Heritage Hills Drive is 25 MPH. Refer to **Figure 1** in the attachments for additional details of the Heritage Hills Drive segment.

The Heritage Hills Drive corridor was evaluated to identify potential infrastructure, maintenance needs, and road-user behaviors that contribute to increased safety risk at and in the vicinity of the school-related crash location. The Heritage Hills Drive corridor was reviewed between Gold Mine Road to the east and

Briars Road/Gold Mine Road to the west. There is one minor horizontal curve just east of the intersection with Briars Road/Gold Mine Road. The segment is relatively flat, with no significant vertical curve. The sightlines towards both intersections are clear and observations indicate good compliance with stop controls. Please refer to **Figures 1** for additional information.

Heritage Hills Drive at Briars Road/Gold Mine Road

Heritage Hills Drive at Briars Road/Gold Mine Road is a four-leg intersection with all-way stop control and is located north of Greenwood ES. Briars Road and Gold Mine Road are classified as neighborhood connectors. ADA-compliant pedestrian ramps provide accessible crossings on the north leg of the intersection. While pedestrian ramps are present at the other legs, they are not ADA-compliant. Ladder-style crosswalks are installed for all four legs of the intersection.

Heritage Hills Drive at Briars Road/Gold Mine Road is not a designated school crossing for Greenwood ES, as an 'End School Zone' sign is posted approximately 100 feet south of the intersection along Gold Mine Road.

Crash History

Crash data obtained from dataMontgomery provides information for two (2) incidents that occurred along Heritage Hills Drive between May 2016 and August 2024. One (1) collision involved a pedestrian operating a scooter. One (1) collision resulted in injuries. The incidents are illustrated on **Figure 3**.

Field Observations and Findings

Field observations were performed on Tuesday, January 14, 2025, during the Greenwood ES dismissal period. Weather conditions were clear, and the roadway surface was dry. Students and parents were observed using crossings at both the Briars Road/Gold Mine Road intersection and the Gold Mine Road intersection with Heritage Hills Drive. Vehicles were observed queueing along Gold Mine Road south of Heritage Hills Drive, in the counterclockwise direction, to pick up students.

During the observations, a crossing guard was present at the intersection of Heritage Hills Drive and Gold Mine Road to facilitate student/pedestrian movements to and from points north of the school.

At approximately 4:00 pm, four students were observed riding non-motorized scooters to cross the intersection of Heritage Hills Drive and Briars Road/Gold Mine Road from south to north. Notably, this is around the same time of day as the subject incident.

Recommendations Related to Crash

Based on the crash report and crash data, the subject scooter-involved incident appears to be an isolated occurrence. Field verification confirms that the westbound approach provides adequate sight distance, meeting the AASHTO minimum stopping sight distance requirement of 155 feet for 25 mph. Additionally, the motorist came to a complete stop at the intersection. No improvements are recommended at this location to MCDOT.

Recommendations to Improve ADA Accessibility

Pedestrian accessibility at the subject intersection may be improved by:

1. Reconstructing the pedestrian ramps at the intersection of Heritage Hills Drive and Briars Road/Gold Mine Road so that they are ADA compliant.

Site Photograph



Photo 1. Westbound approach towards Briars Road intersection with Heritage Hills Drive



Photo 2. Northbound approach towards Briars Road intersection with Heritage Hills Drive



Photo 3. Eastbound approach towards Briars Road intersection with Heritage Hills Drive



Photo 4. Southbound Approach towards Briars Road intersection with Heritage Hills Drive



Photo 5. Students on non-motorized scooters

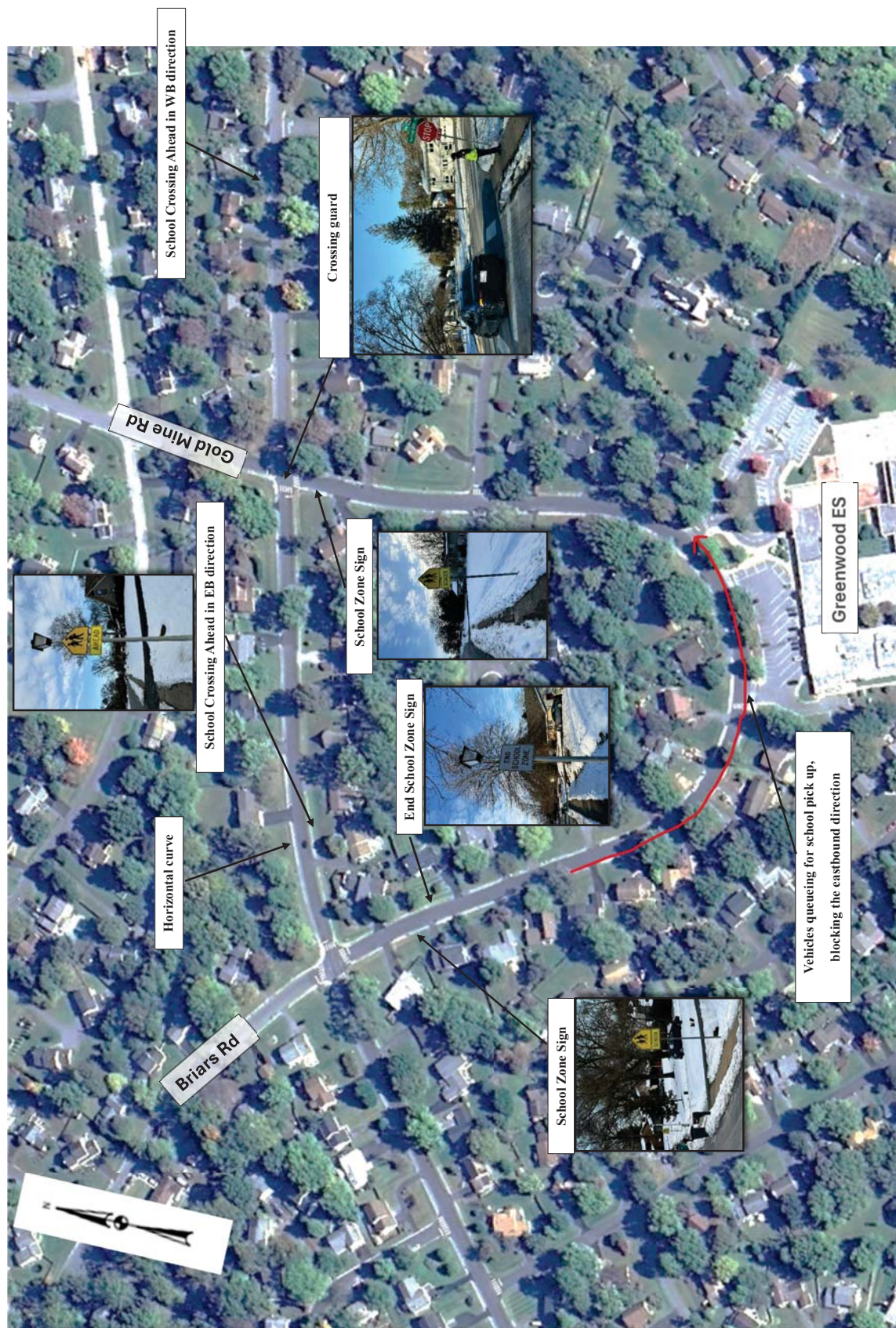


Figure 1 - Heritage Hills Drive Corridor Evaluation

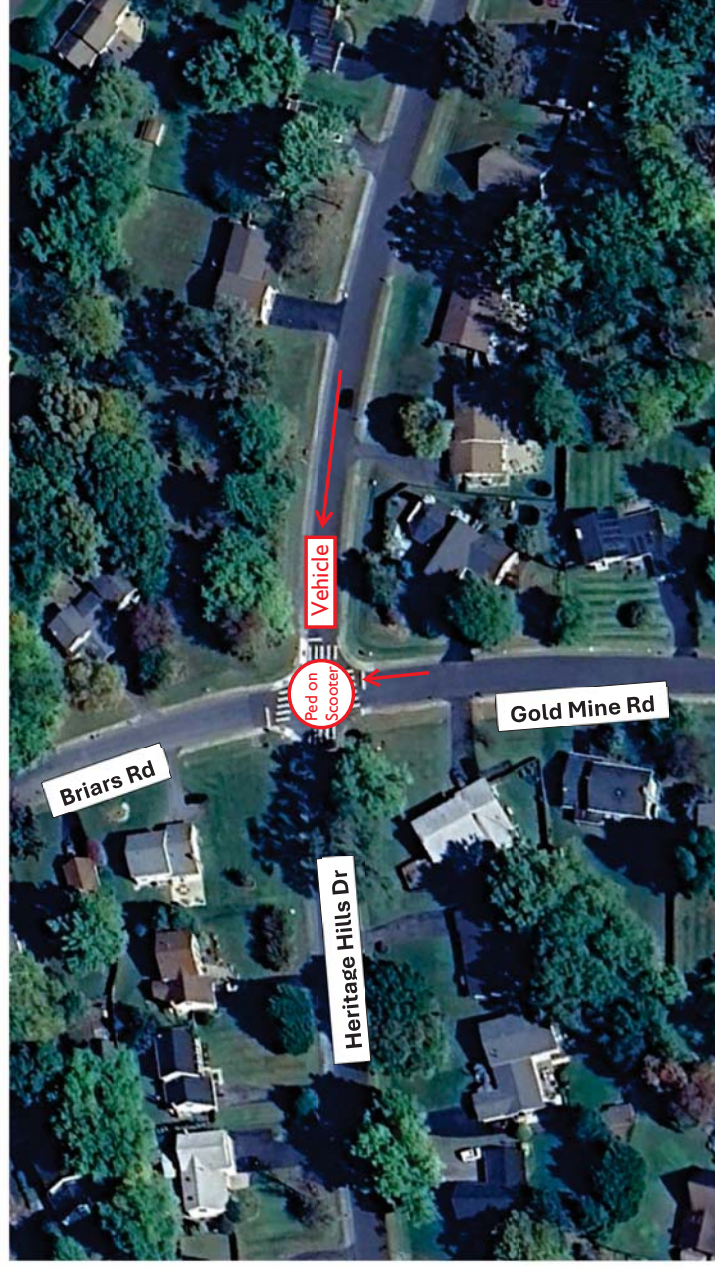


Figure 2 - Heritage Hills Drive at Briars Road/Gold Mine Road
2024 August 29 Scooter-Involved Crash

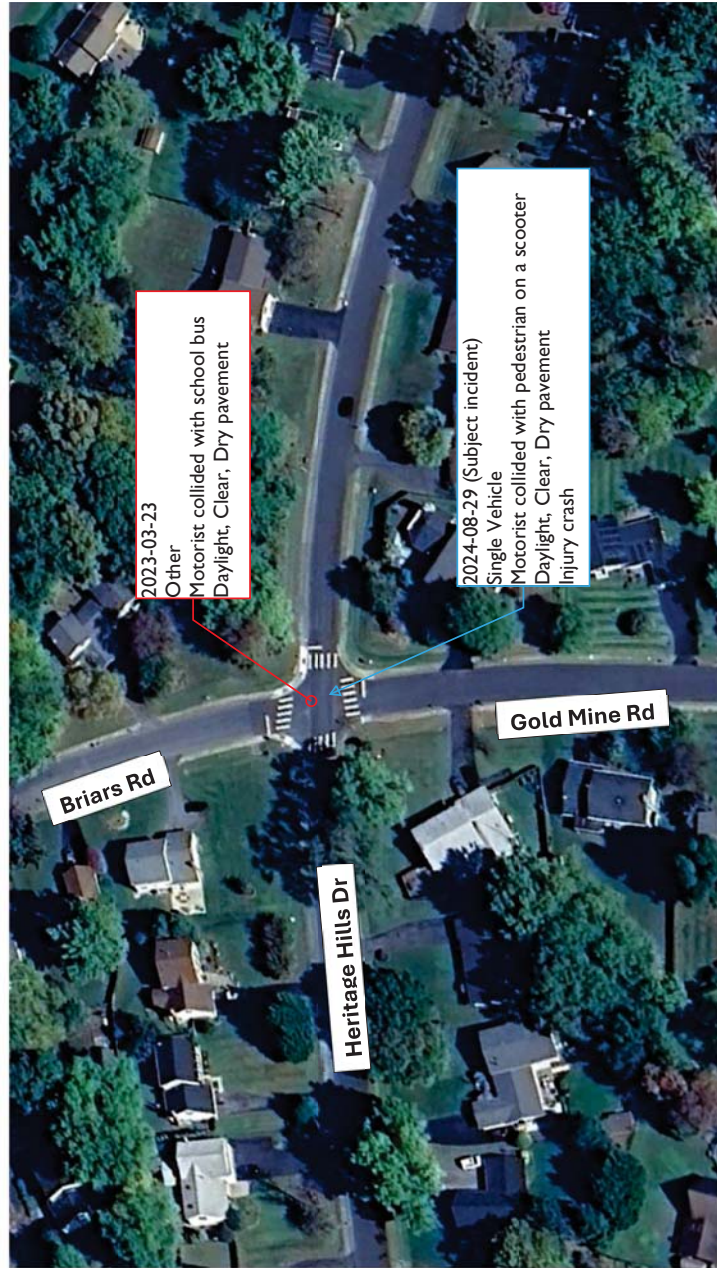


Figure 3 - Crash History (2015-2024)