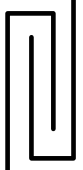


NOTES

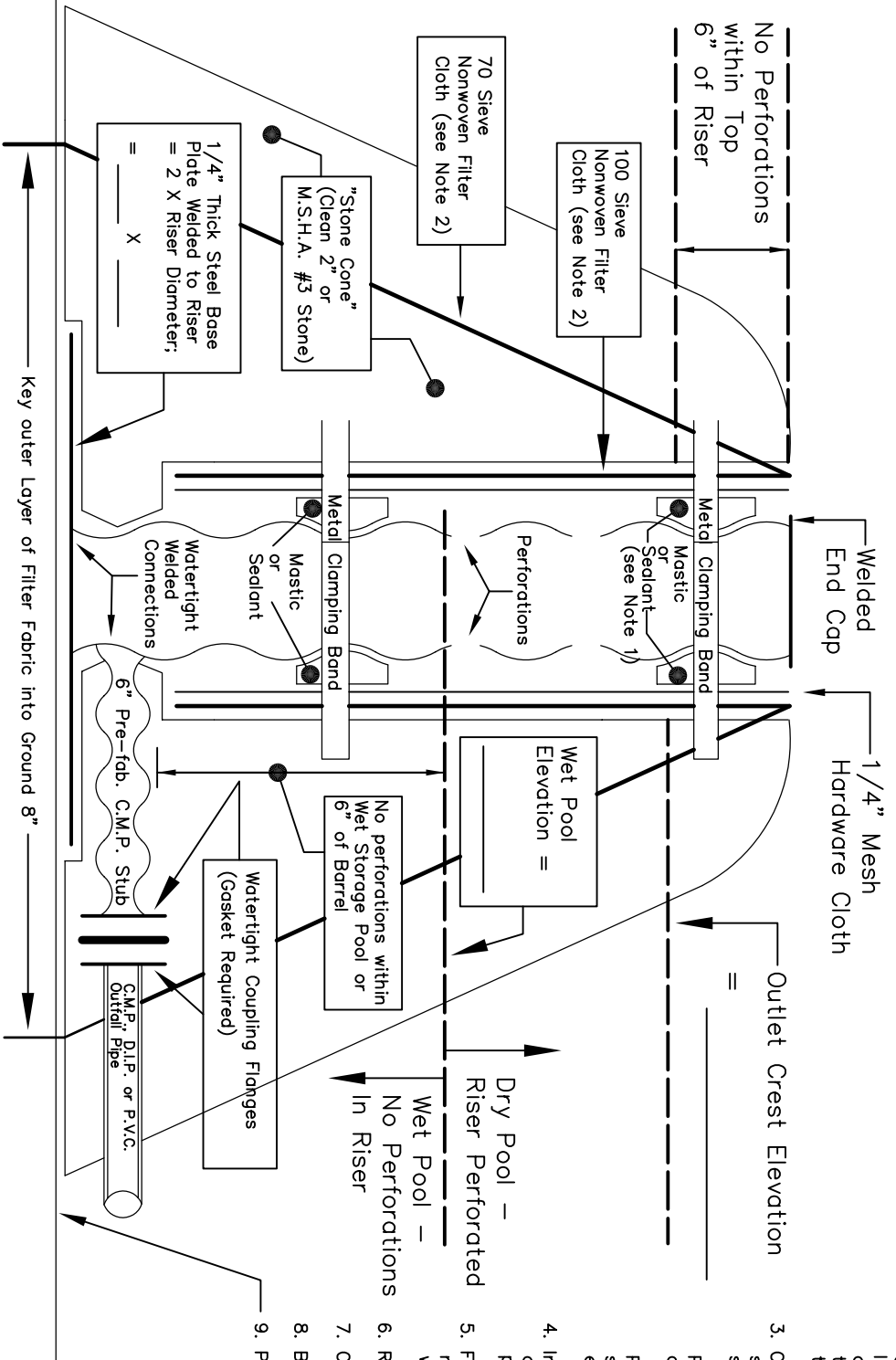
1. Sleeve gasket & corrugated connecting band recommended to fasten 100 sieve filter cloth and hardware cloth to riser.
2. All filter cloth must be a non-woven geotextile fabric. The 100 sieve filter cloth must have a minimum permittivity of 1.0 sec.-1, the 70 sieve filter cloth must have a minimum permittivity of 1.5 sec.-1. The longitudinal ends of the first layer of filter cloth must be folded together and fastened to produce a lock seam.



3. Only 16 Gauge Corrugated Metal Pipe (C.M.P.) shall be used for the riser. Corrugations shall be 2-2/3" x 1/2".
Perforations must be in the "valleys" of the corrugations.
Perforations must be 3/4" diameter holes spaced 6" on center above the wet pool elevation only.

4. Inspection and approval of the riser and filter cloth and bands must be obtained before placement of the stone cone(s).
5. For risers taller than four feet (4'), earth fill may be used in lieu of stone below the wet pool elevation.

6. Riser Diameter = _____
7. Cleanout Elevation = _____
8. Barrel Inv. Elevation = _____
9. Pond Bottom Elevation = _____



MONTGOMERY COUNTY
DEPARTMENT OF PERMITTING
SERVICES
WATER RESOURCES

MODIFIED DEWATERING DEVICE FOR
SEDIMENT TRAPS, SEDIMENT BASINS
AND
STORMWATER MANAGEMENT PONDS

DATE: Feb. 1997
REVISION: May 1997
SCALE: NONE