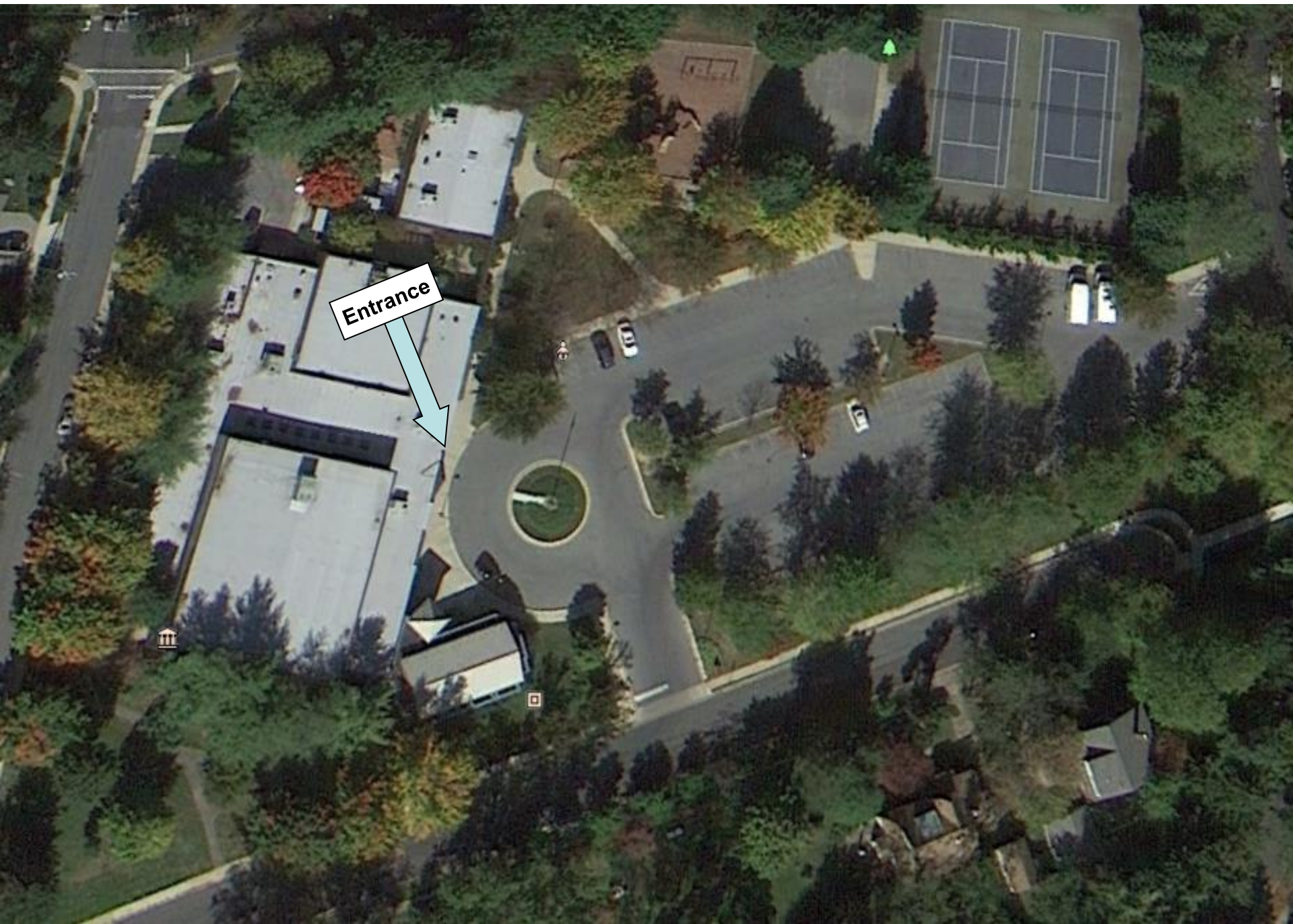


**JANE E. LAWTON  
COMMUNITY  
RECREATION  
CENTER**

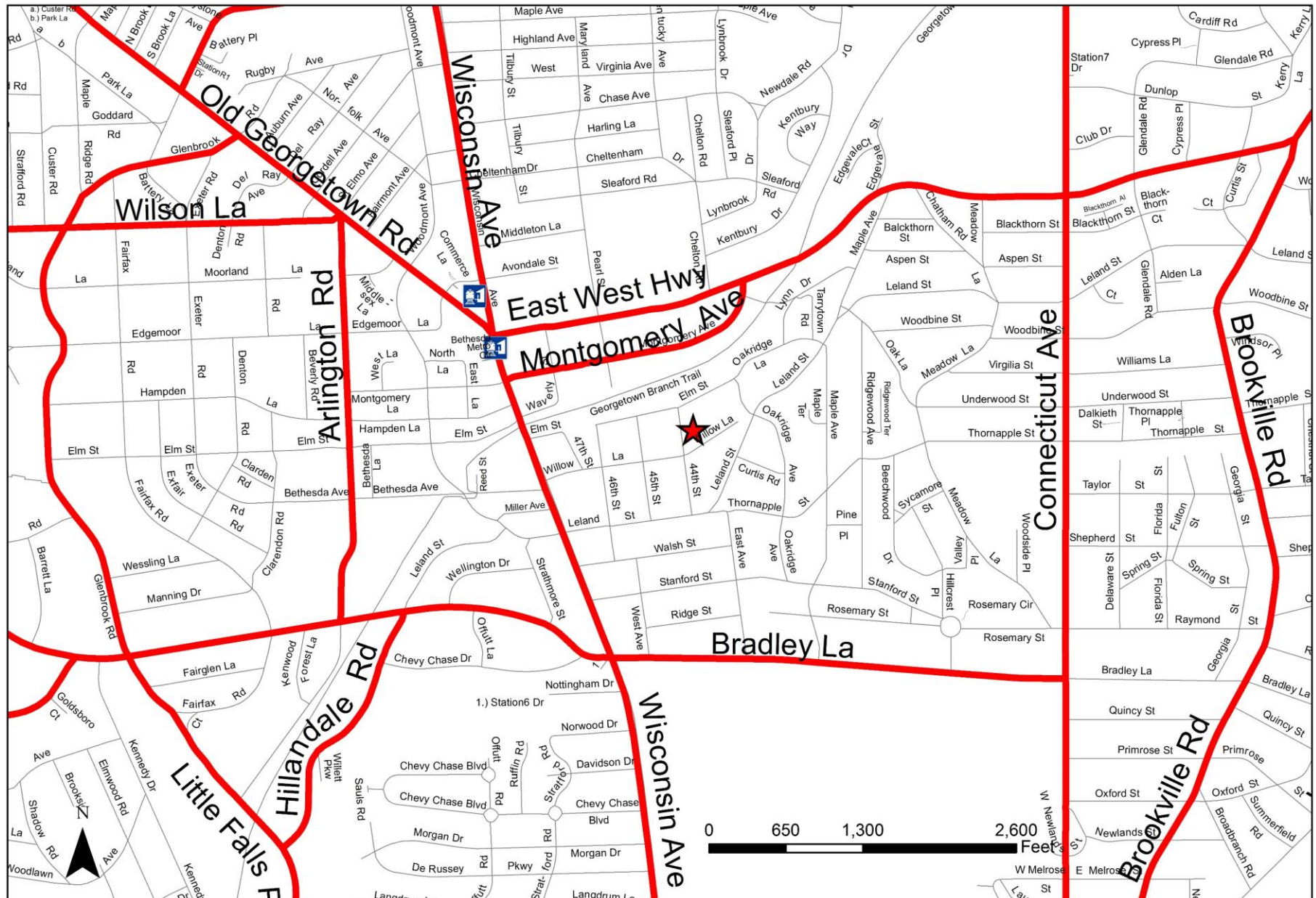
# JANE E. LAWTON COMMUNITY RECREATION CENTER



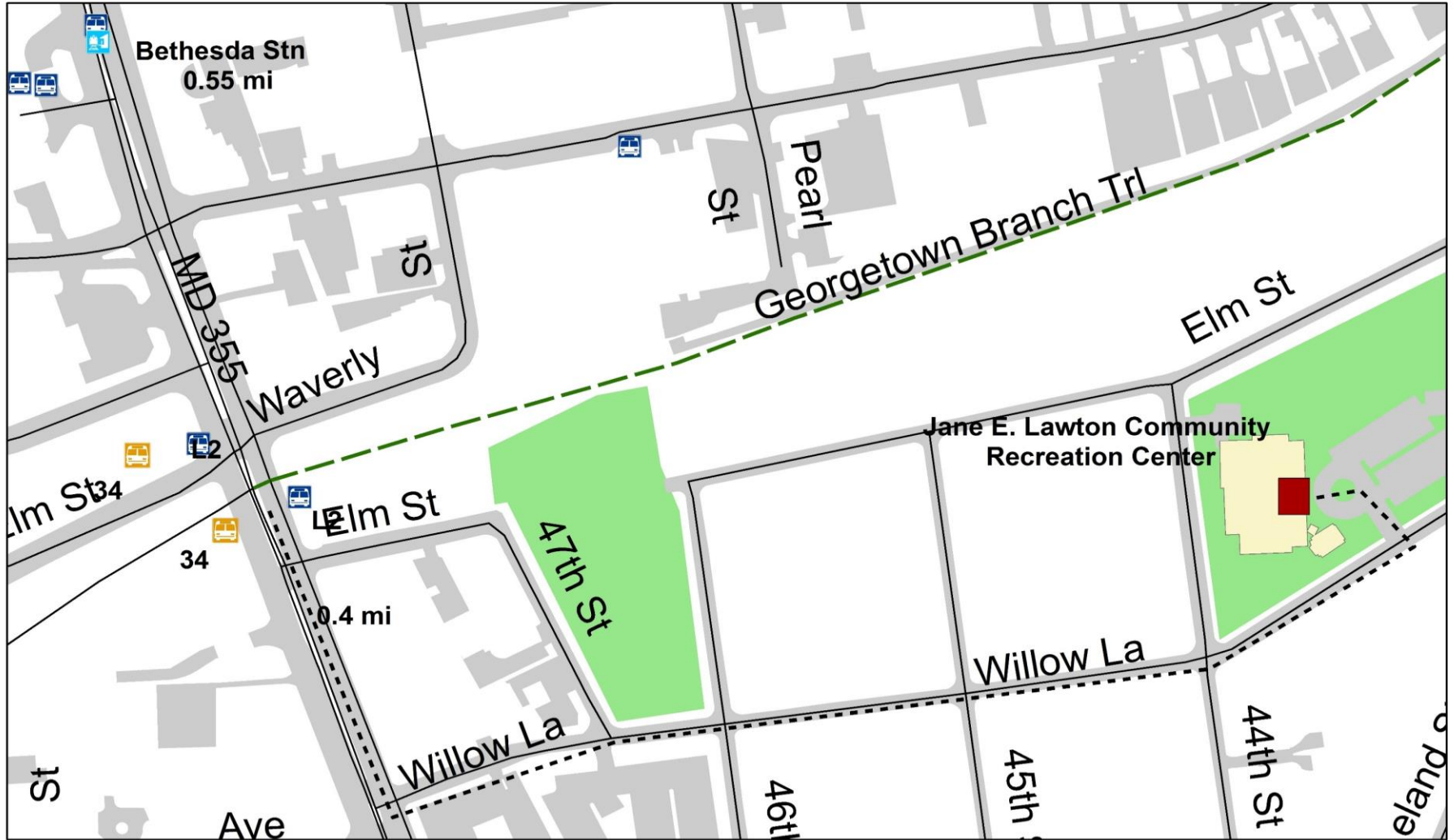








# Jane E. Lawton Community Recreation Center

4301 Willow Lane, Chevy Chase, MD 20815



# JANE E. LAWTON COMMUNITY RECREATION CENTER - PUBLIC TRANSIT



-  Metro Station
-  WMATA Bus Stop
-  Ride On Stop
-  Early Voting Center
-  Building Entrance
-  Walking distance to entrance (approximate)

0 125 250 500 Feet

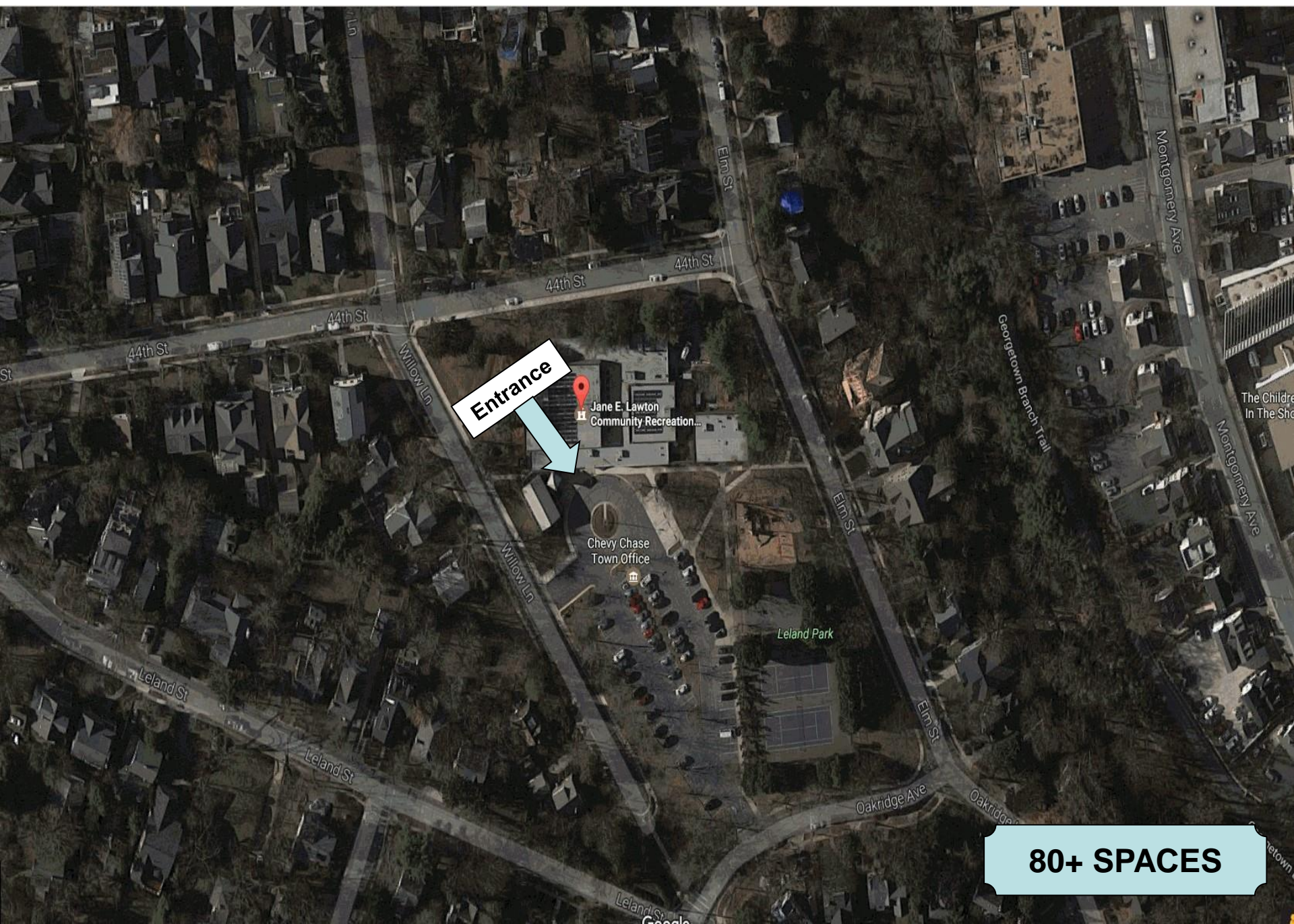


# JANE E. LAWTON COMMUNITY RECREATION CENTER





# JANE E. LAWTON COMMUNITY RECREATION CENTER - PARKING



**80+ SPACES**



# JANE E. LAWTON COMMUNITY REC CENTER - NO ELECTIONEERING ZONE



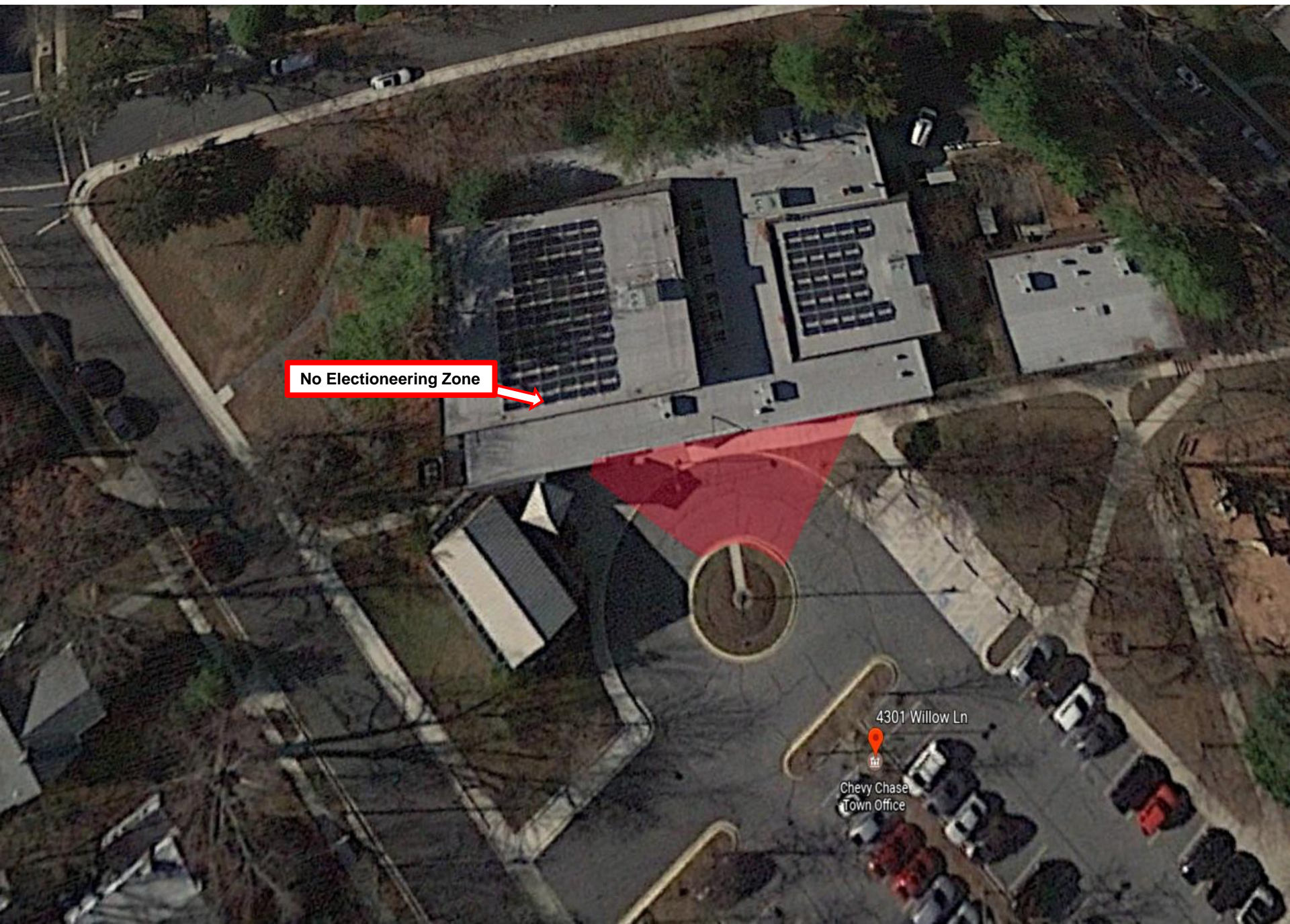


# JANE E. LAWTON COMMUNITY REC CENTER - NO ELECTIONEERING ZONE





# JANE E. LAWTON COMMUNITY REC CENTER - NO ELECTIONEERING ZONE



No Electioneering Zone

4301 Willow Ln

Chevy Chase  
Town Office



# JANE E. LAWTON COMMUNITY RECREATION CENTER (Social Hall)

Entrance



2,729 SQ. FT.

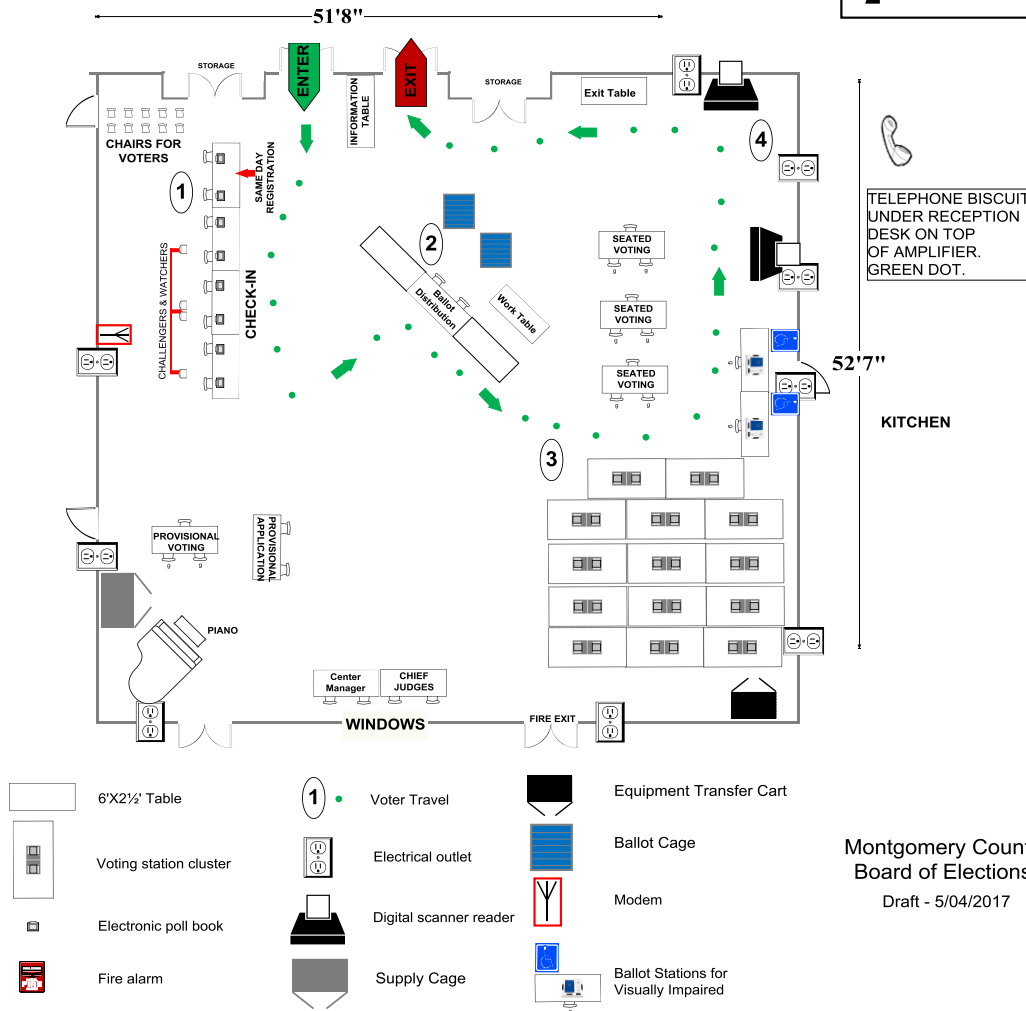


# Jane E. Lawton Community Recreation Center

**DRAFT**

**SOCIAL HALL**

- 30** Voting Booths
- 9** Seated Voting
- 8** Poll Books
- 2** BMDs
- 2** Scanners



Montgomery County  
Board of Elections  
Draft - 5/04/2017