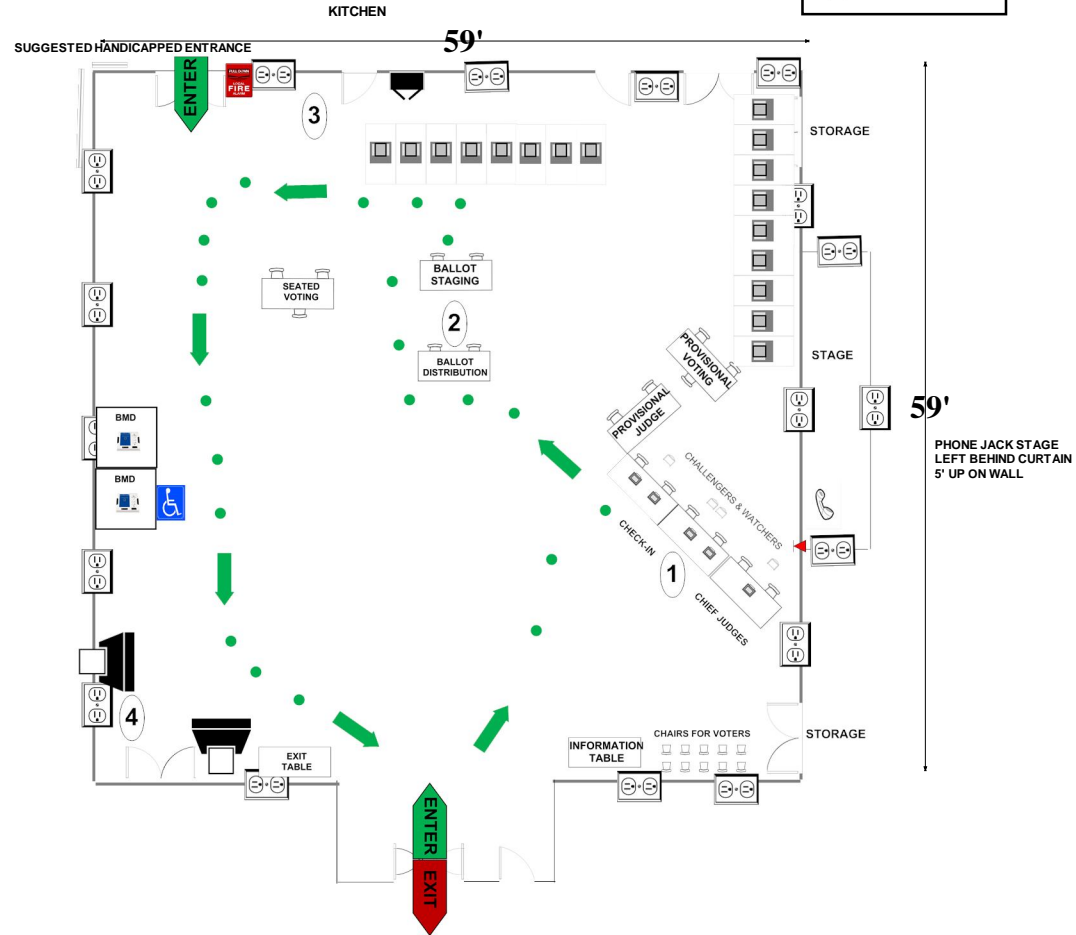


05-01 Dr. Charles Drew Elementary School
 1200 Swingingdale Dr
 Silver Spring MD 20905
RECOMMENDED ROOM LAYOUT

ALL-PURPOSE ROOM

- | | |
|-----------|---------------|
| 17 | Voting Booths |
| 3 | Seated Voting |
| 5 | Poll Books |
| 2 | BMDs |
| 2 | Scanners |



- | | | | | | |
|--|--|--|---------------------------|--|----------------|
| | 6'x2 1/2' Table | | BMD Ballot Marking Device | | 1 Voter Travel |
| | Voting Booths with 2 1/2'x5' clearance | | Vending Machine | | 2 plug outlet |
| | Transfer Cart | | Electronic Poll Book | | Scanner |
| | Window | | Fire alarm | | |
- Scanner Judge stands**
 2 - 3 feet from scanner

Montgomery County
 Board of Elections
 6/5/2018

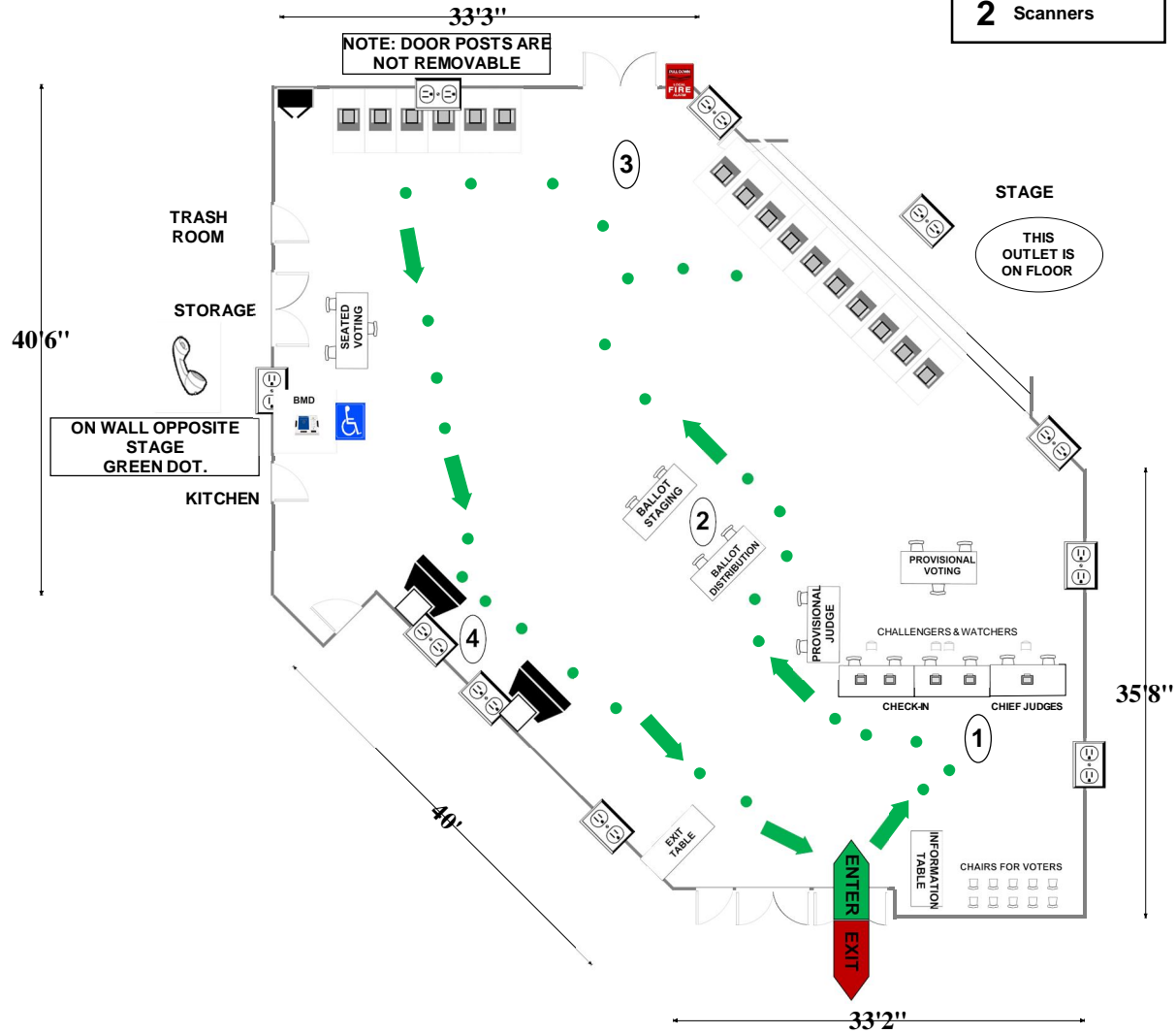
05-02 Greencastle Elementary School

13611 Robey Rd
Silver Spring, MD 20904

RECOMMENDED ROOM LAYOUT

ALL-PURPOSE ROOM

- 16** Voting Booths
- 3** Seated Voting
- 5** Poll Books
- 1** BMD
- 2** Scanners



- | | | | | | |
|--|--|--|---|--|----------------|
| | 6'x2 1/2' Table | | Ballot Marking Device | | 1 Voter Travel |
| | Voting Booths with 2 1/2'x5' clearance | | Vending Machine | | 2 plug outlet |
| | Transfer Cart | | Electronic Poll Book | | Fire alarm |
| | Window | | Scanner | | |
| | | | Scanner Judge stands
2 - 3 feet from scanner | | |

Montgomery County
Board of Elections
6/5/2018

05-03 Francis Scott Key Middle School

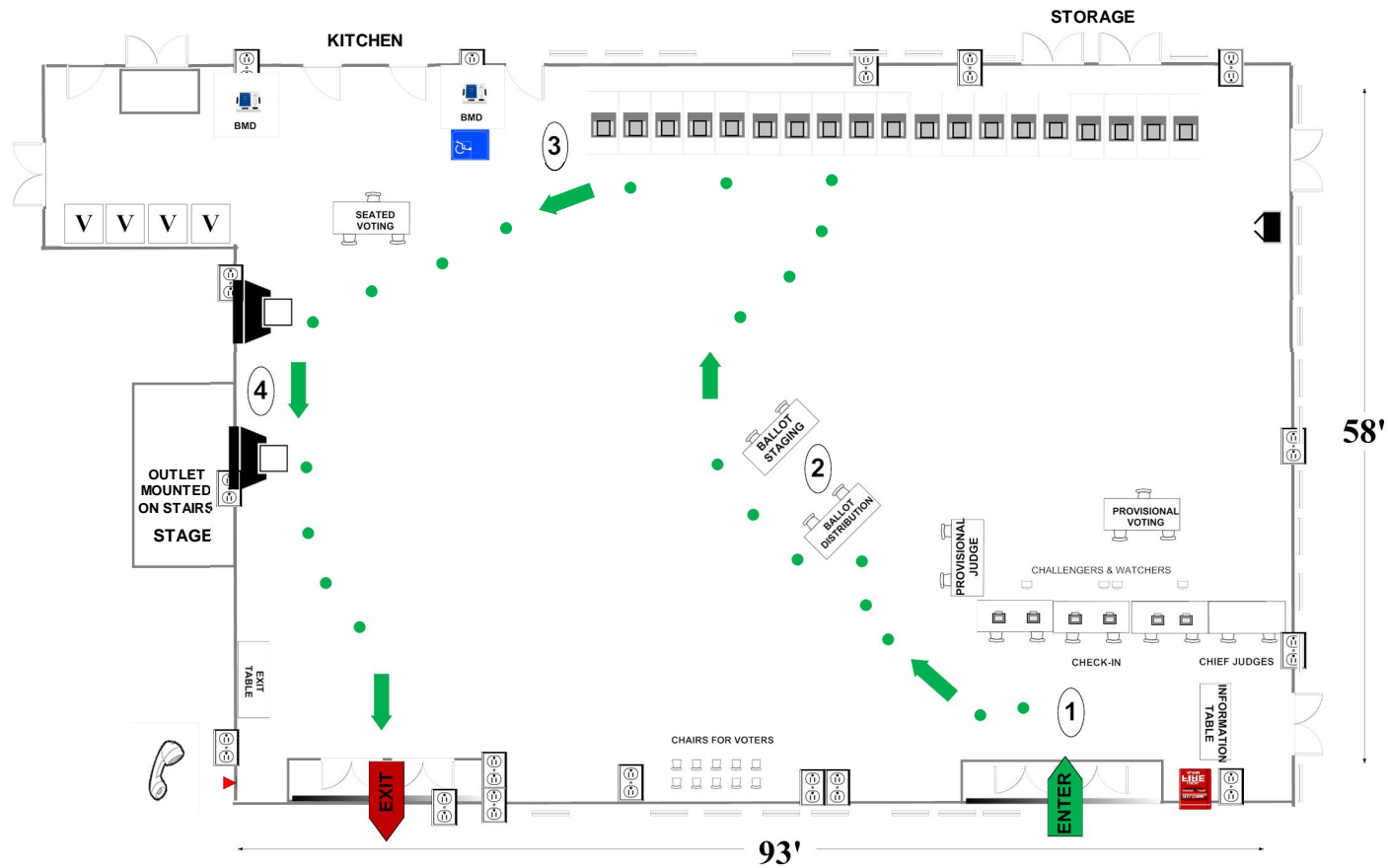
910 Schindler Drive

Silver Spring, MD 20903

RECOMMENDED ROOM LAYOUT

CAFETERIA

- | | |
|----|---------------|
| 19 | Voting Booths |
| 3 | Seated Voting |
| 6 | Poll Books |
| 2 | BMDs |
| 2 | Scanners |



- | | | | | | |
|--|--|--|-----------------------|--|---------------|
| | 6'X2 1/2' Table | | Ballot Marking Device | | Voter Travel |
| | Voting Booths with 2 1/2'X5' clearance | | Vending Machine | | 2 plug outlet |
| | Transfer Cart | | Electronic Poll Book | | Fire alarm |
| | Window | | Scanner | | |
| | | Scanner Judge stands
2 - 3 feet from scanner | | | |

Montgomery County
Board of Elections
6/6/2018

05-04 Riderwood Village Performance Hall

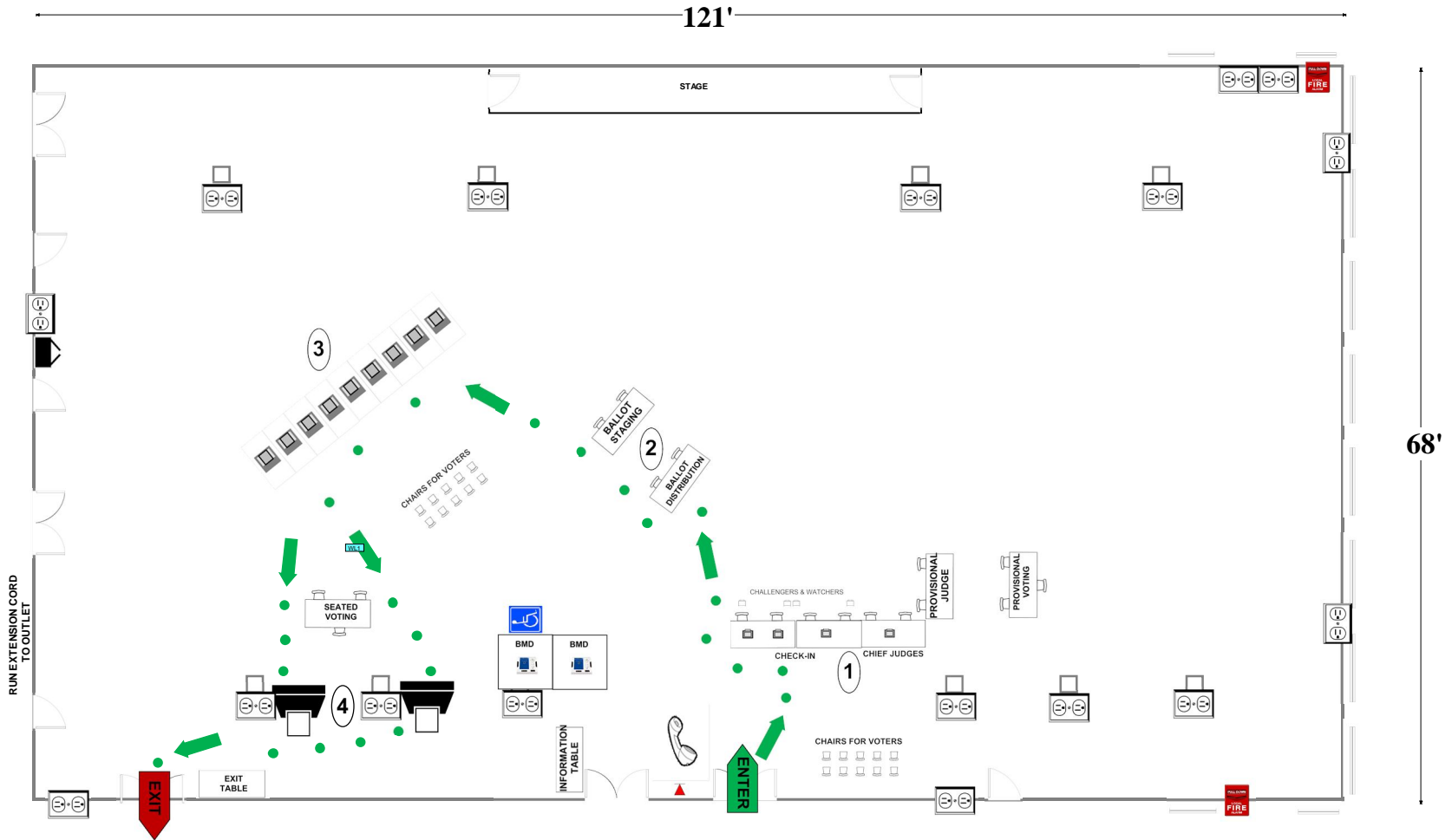
3120 Gracefield Rd

Silver Spring, MD 20904

RECOMMENDED ROOM LAYOUT

PERFORMANCE HALL

- | | |
|---|---------------|
| 9 | Voting Booths |
| 3 | Seated Voting |
| 4 | Poll Books |
| 2 | BMDs |
| 2 | Scanners |



- | | | | | | |
|--|--|--|---|--|---------------|
| | 6'X2 1/2' Table | | Ballot Marking Device | | Voter Travel |
| | Voting Booths with 2 1/2' X 5' clearance | | Vending Machine | | 2 plug outlet |
| | Transfer Cart | | Electronic Poll Book | | Scanner |
| | Window | | Fire alarm | | |
| | | | Scanner Judge stands
2 - 3 feet from scanner | | |

**ON ENTERING PERFORMANCE HALL,
JACK IS 30' ON RIGHT WALL BENEATH
"EMERGENCY USE" PHONE.
GREEN DOT.**

Montgomery County
Board of Elections
6/5/2018

05-05 Burnt Mills Elementary School

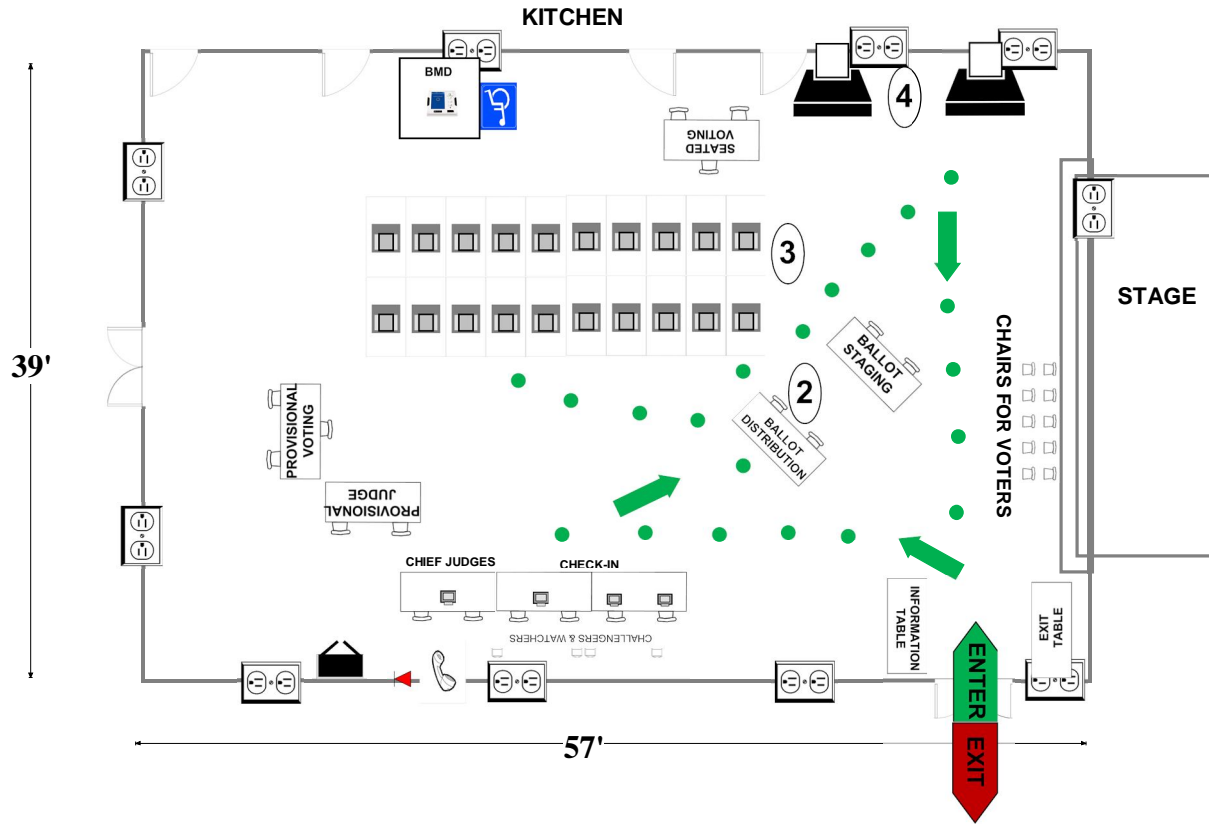
11211 Childs St

Silver Spring, MD 20901

RECOMMENDED ROOM LAYOUT

ALL PURPOSE ROOM

- 20** Voting Booths
- 3** Seated Voting
- 4** Poll Books
- 1** BMDs
- 2** Scanners



- 6'X2½' Table
- Voting Booths with 2½'X5' clearance
- Transfer Cart
- Window
- Ballot Marking Device
- Vending Machine
- Electronic Poll Book
- Scanner
- Scanner Judge stands
2 - 3 feet from scanner**
- Voter Travel
- 2 plug outlet
- Fire alarm

Montgomery County
Board of Elections

6/5/2018

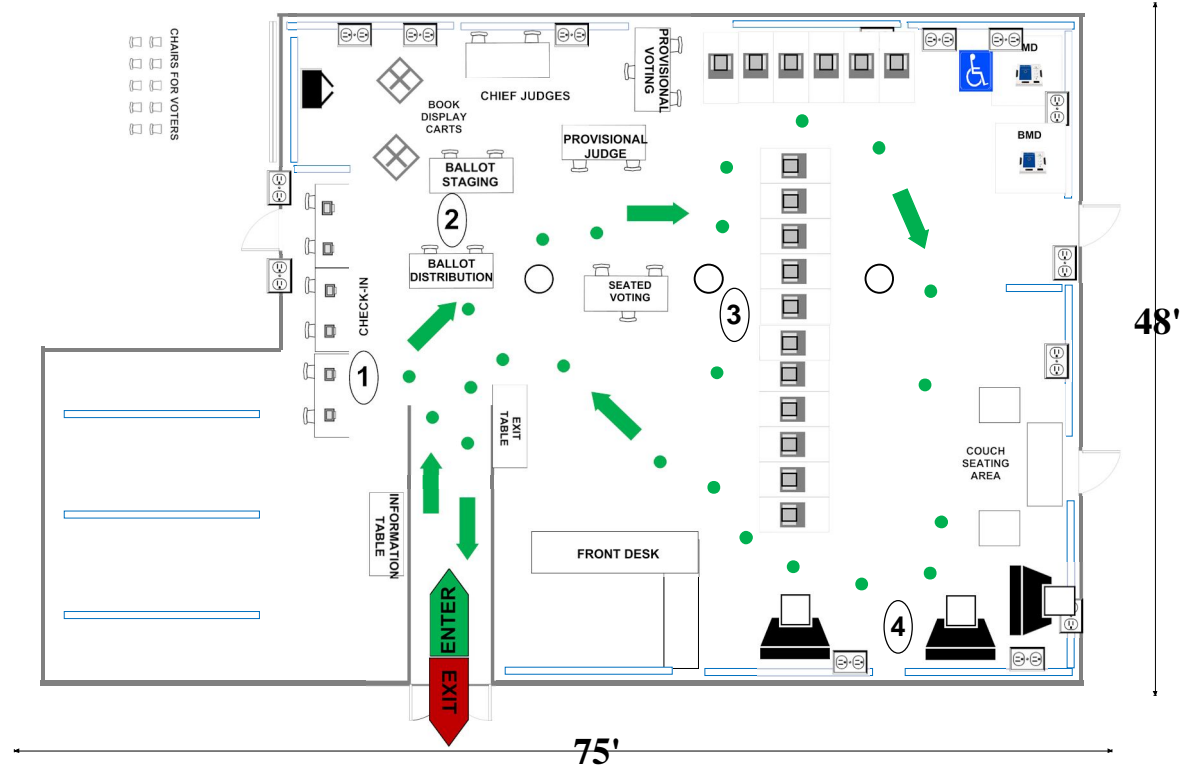
05-06 White Oak Middle School

12201 New Hampshire Ave
Silver Spring, MD 20904

RECOMMENDED ROOM LAYOUT

MEDIA CENTER

- | | |
|----|---------------|
| 17 | Voting Booths |
| 3 | Seated Voting |
| 6 | Poll Books |
| 2 | BMDs |
| 2 | Scanners |



- | | | | | | |
|--|--|--|---|--|---------------|
| | 6'X2 1/2' Table | | Ballot Marking Device | | Voter Travel |
| | Voting Booths with 2 1/2'X5' clearance | | Vending Machine | | 2 plug outlet |
| | Transfer Cart | | Electronic Poll Book | | Fire alarm |
| | Window | | Scanner | | Column |
| | Bookcase | | Scanner Judge stands
2 - 3 feet from scanner | | |

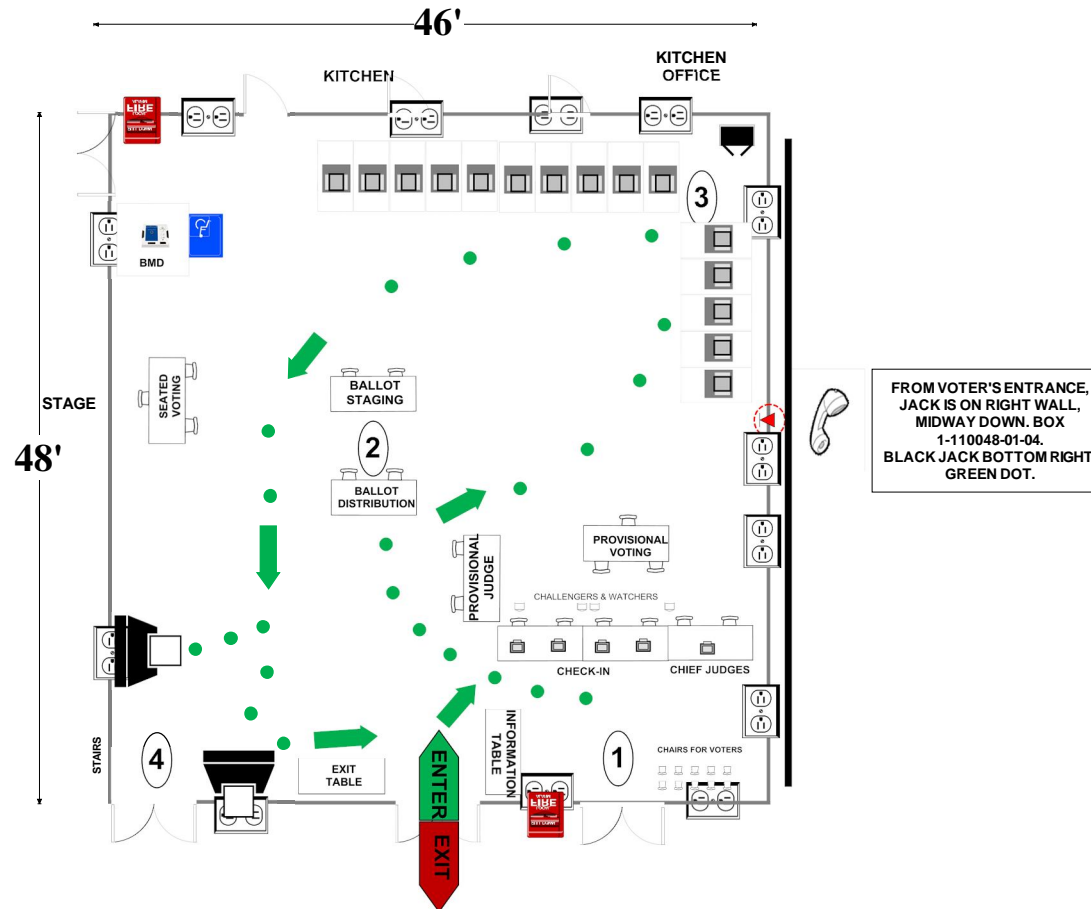
Montgomery County
Board of Elections
6/5/2018

05-08 William Tyler Page Elementary School
 13400 Tamarack Rd
 Silver Spring, MD 20904

ALL-PURPOSE ROOM

RECOMMENDED ROOM LAYOUT

- | | |
|-----------|---------------|
| 15 | Voting Booths |
| 3 | Seated Voting |
| 5 | Poll Books |
| 1 | BMD |
| 2 | Scanners |



- | | | | | | |
|--|--|--|-----------------------|--|---------------|
| | 6'X2 1/2' Table | | Ballot Marking Device | | Voter Travel |
| | Voting Booths with 2 1/2'X5' clearance | | Vending Machine | | 2 plug outlet |
| | Transfer Cart | | Electronic Poll Book | | Scanner |
| | Window | | Fire alarm | | |
- Scanner Judge stands**
 2 - 3 feet from scanner

Montgomery County
 Board of Elections
 6/5/2018

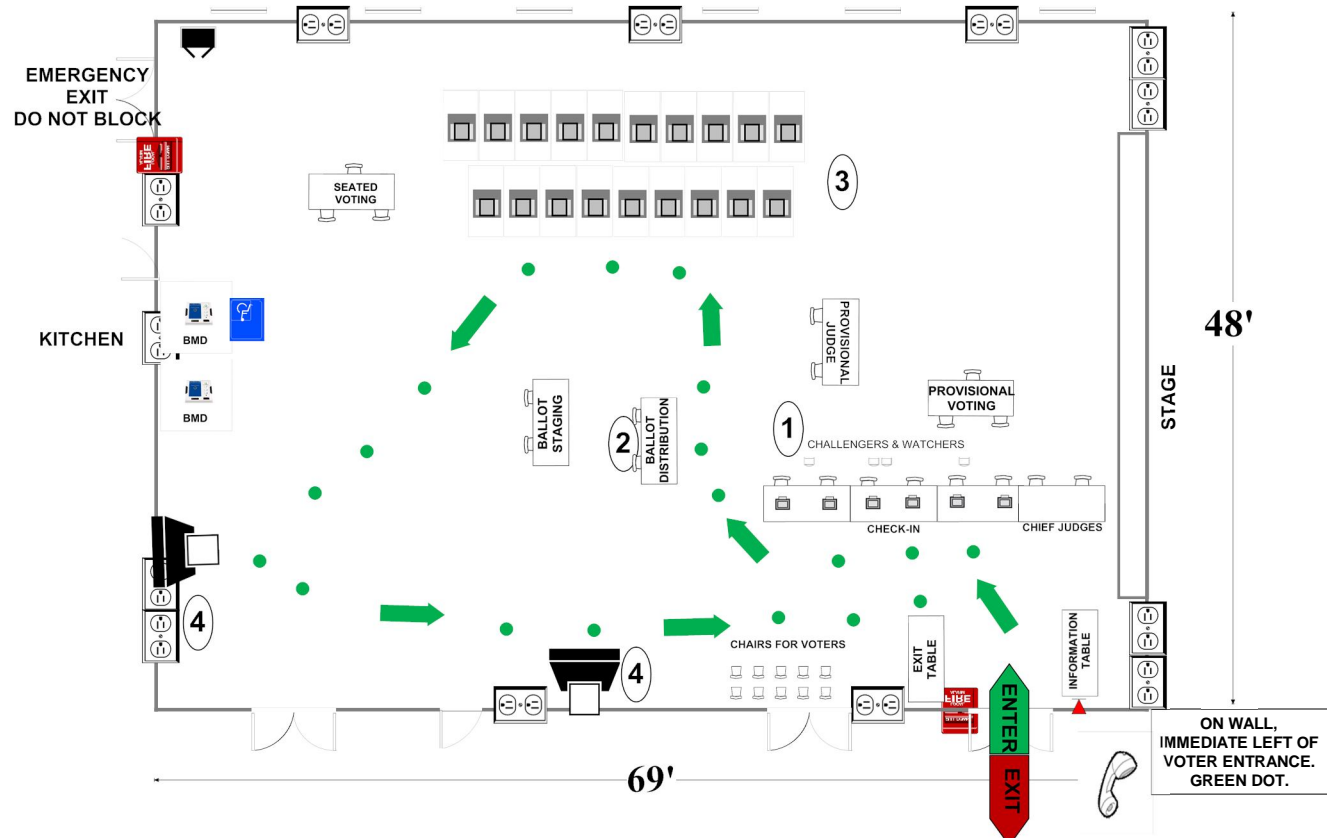
05-09 Westover Elementary School

401 Hawkesbury Ln
Silver Spring, MD 20904

RECOMMENDED ROOM LAYOUT

ALL-PURPOSE ROOM

- | | |
|----|---------------|
| 19 | Voting Booths |
| 3 | Seated Voting |
| 6 | Poll Books |
| 2 | BMDs |
| 2 | Scanners |



- | | | | | | |
|--|--|--|-----------------------|--|----------------|
| | 6'X2 1/2' Table | | Ballot Marking Device | | 1 Voter Travel |
| | Voting Booths with 2 1/2'X5' clearance | | Vending Machine | | 2 plug outlet |
| | Transfer Cart | | Electronic Poll Book | | Scanner |
| | Window | | Fire alarm | | |
- Scanner Judge stands**
2 - 3 feet from scanner

Montgomery County
Board of Elections
6/5/2018

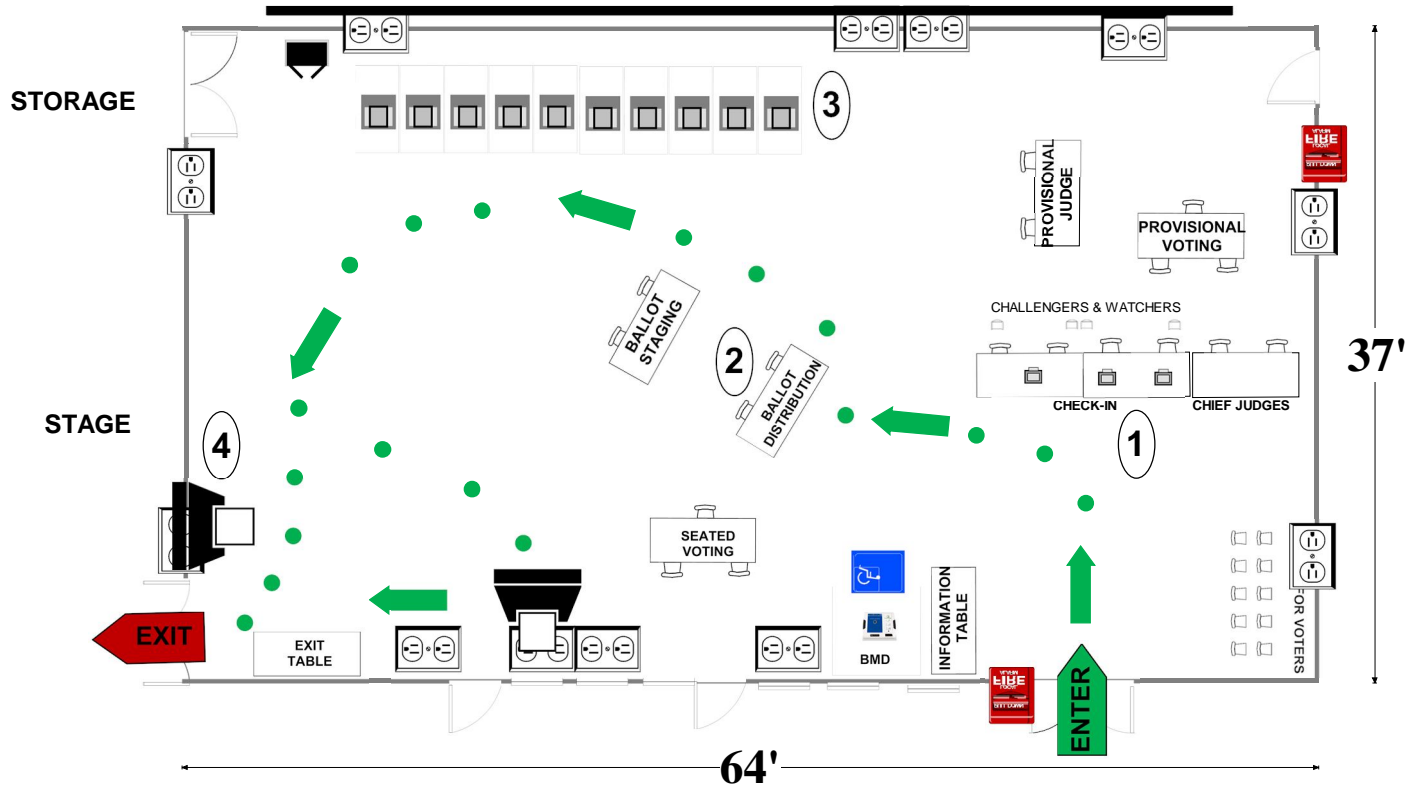
05-10 Cresthaven Elementary School

1234 Cresthaven Dr
Silver Spring, MD 20903

RECOMMENDED ROOM LAYOUT

ALL-PURPOSE ROOM

- 10** Voting Booths
- 3** Seated Voting
- 3** Poll Books
- 1** BMD
- 2** Scanners



- 6'X2 1/2' Table
 - Voting Booths with 2 1/2'X5' clearance
 - Transfer Cart
 - Window
 - Ballot Marking Device
 - Vending Machine
 - Electronic Poll Book
 - Scanner
 - Voter Travel
 - 2 plug outlet
 - Fire alarm
- Scanner Judge stands
2 - 3 feet from scanner**

Montgomery County
Board of Elections

6/5/2018

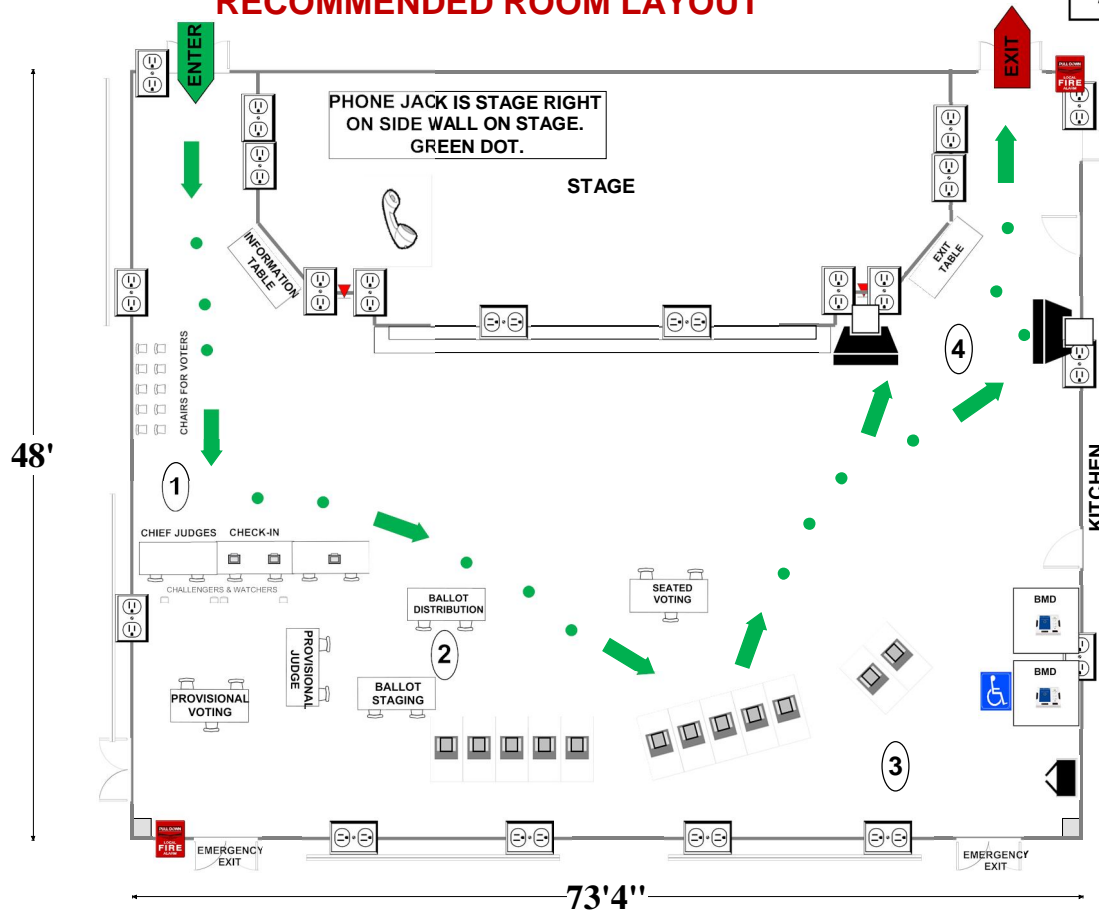
05-11 Cannon Road Elementary School

901 Cannon Rd
Silver Spring, MD 20904

ALL-PURPOSE ROOM

RECOMMENDED ROOM LAYOUT

- | | |
|----|---------------|
| 12 | Voting Booths |
| 3 | Seated Voting |
| 3 | Poll Books |
| 2 | BMDs |
| 2 | Scanners |



- | | | | | | |
|--|--|--|---|--|---------------|
| | 6'X2 1/2' Table | | Ballot Marking Device | | Voter Travel |
| | Voting Booths with 2 1/2'X5' clearance | | Vending Machine | | 2 plug outlet |
| | Transfer Cart | | Electronic Poll Book | | Fire alarm |
| | Window | | Scanner | | |
| | | | Scanner Judge stands
2 - 3 feet from scanner | | |

Montgomery County
Board of Elections

6/6/2018

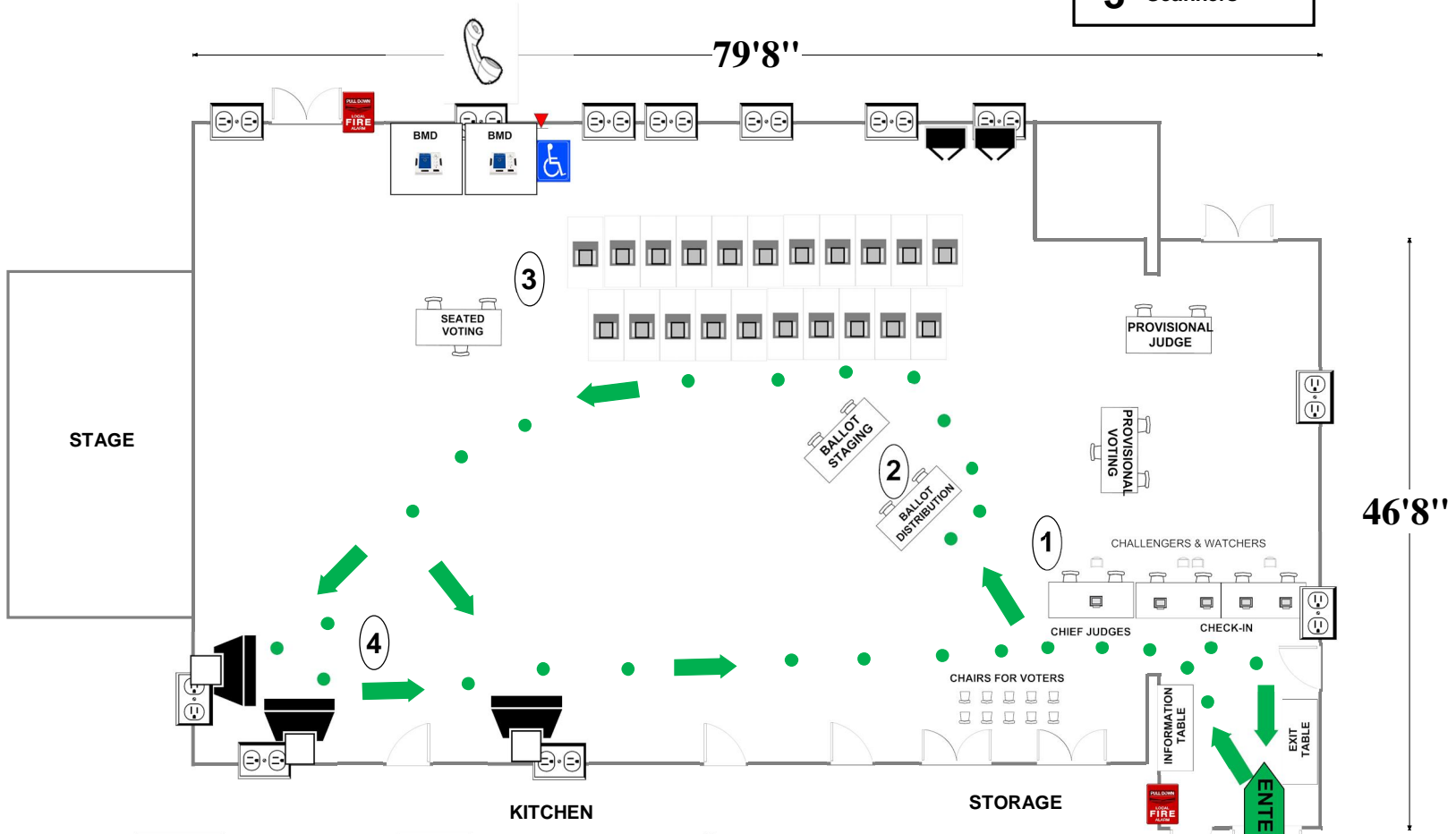
05-12 Galway Elementary School

12612 Galway Dr
Silver Spring, MD 20904

ALL-PURPOSE ROOM

RECOMMENDED ROOM LAYOUT

- | | |
|-----------|---------------|
| 21 | Voting Booths |
| 3 | Seated Voting |
| 5 | Poll Books |
| 2 | BMD |
| 3 | Scanners |



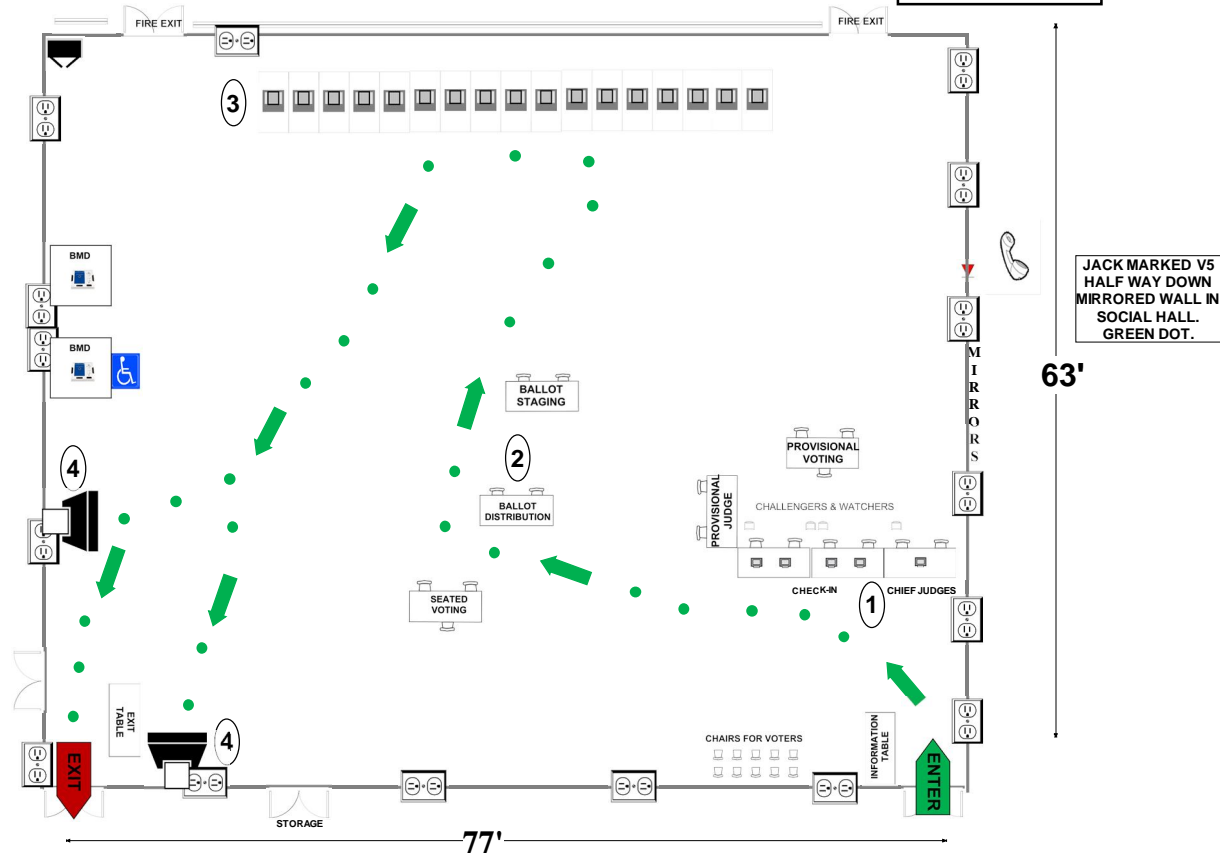
- | | | | | | |
|--|--|--|---|--|---------------|
| | 6'X2 1/2' Table | | Ballot Marking Device | | Voter Travel |
| | Voting Booths with 2 1/2'X5' clearance | | Vending Machine | | 2 plug outlet |
| | Transfer Cart | | Electronic Poll Book | | Scanner |
| | Window | | Scanner Judge stands
2 - 3 feet from scanner | | Fire alarm |

Montgomery County
Board of Elections
6/5/2018

**05-13 White Oak Community
Recreation Center**
1700 April Lane
Silver Spring, MD 20904
RECOMMENDED ROOM LAYOUT

SOCIAL HALL

- 17** Voting Booths
- 3** Seated Voting
- 5** Poll Books
- 2** BMDs
- 2** Scanners



- 6'x2 1/2' Table
- Voting Booths with 2 1/2'x5' clearance
- Transfer Cart
- Window
- Ballot Marking Device
- Vending Machine
- Electronic Poll Book
- Scanner
- Scanner Judge stands**
2 - 3 feet from scanner
- 1 Voter Travel
- 2 plug outlet
- Fire alarm

Montgomery County
Board of Elections
6/5/2018

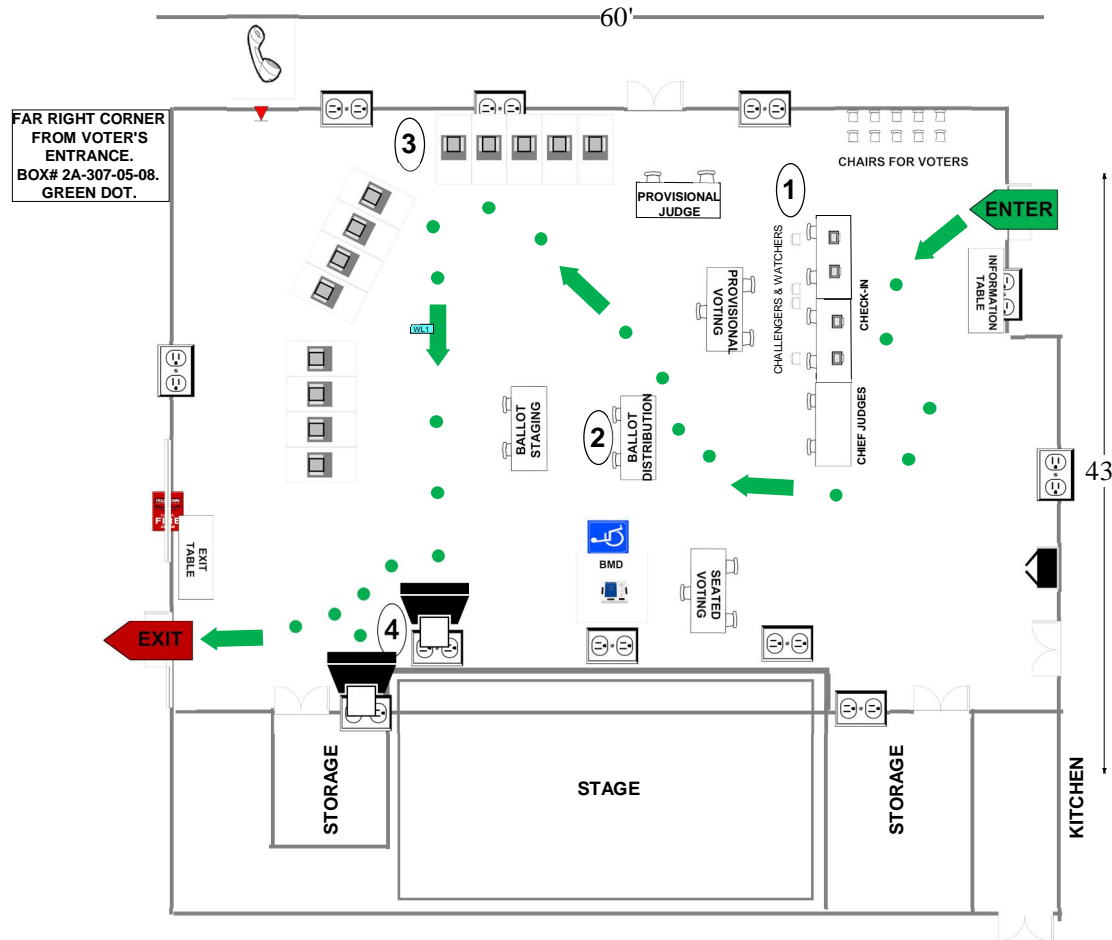
05-14 JoAnn Leleck Elementary School

710 Beacon Road
Silver Spring, MD 20903

RECOMMENDED ROOM LAYOUT

ALL-PURPOSE
ROOM

- 13** Voting Booths
- 3** Seated Voting
- 4** Poll Books
- 1** BMD
- 2** Scanners



- 6'X2 1/2' Table
- Voting Booths with 2 1/2'X5' clearance
- Transfer Cart
- Window
- Ballot Marking Device
- Vending Machine
- Electronic Poll Book
- Scanner
- Scanner Judge stands**
2 - 3 feet from scanner
- 1** Voter Travel
- 2 plug outlet
- Fire alarm

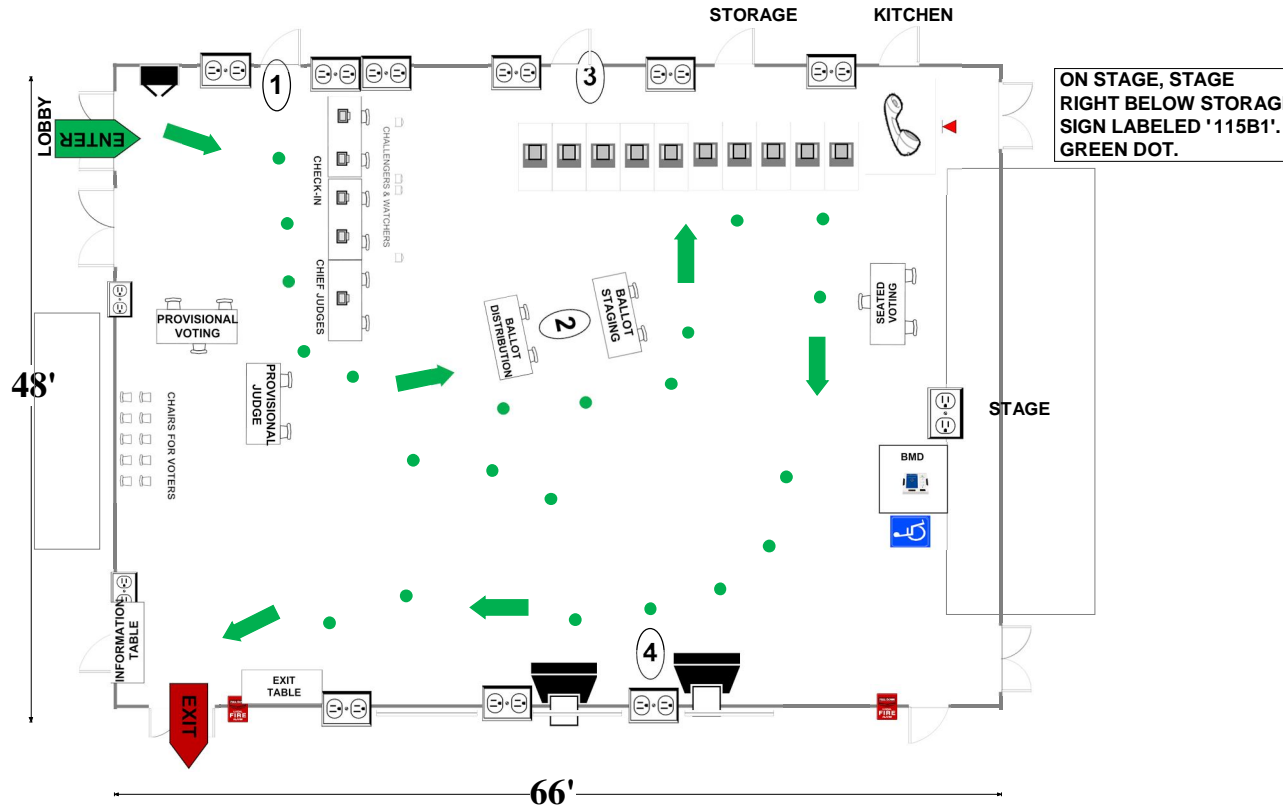
Montgomery County
Board of Elections

6/6/2018

05-15 St. Andrew Ukrainian Orthodox Center
 15100 New Hampshire Ave
 Silver Spring, MD 20905

RECOMMENDED ROOM LAYOUT

- 9** Voting Booths
- 3** Seated Voting
- 5** Poll Books
- 1** BMD
- 2** Scanners



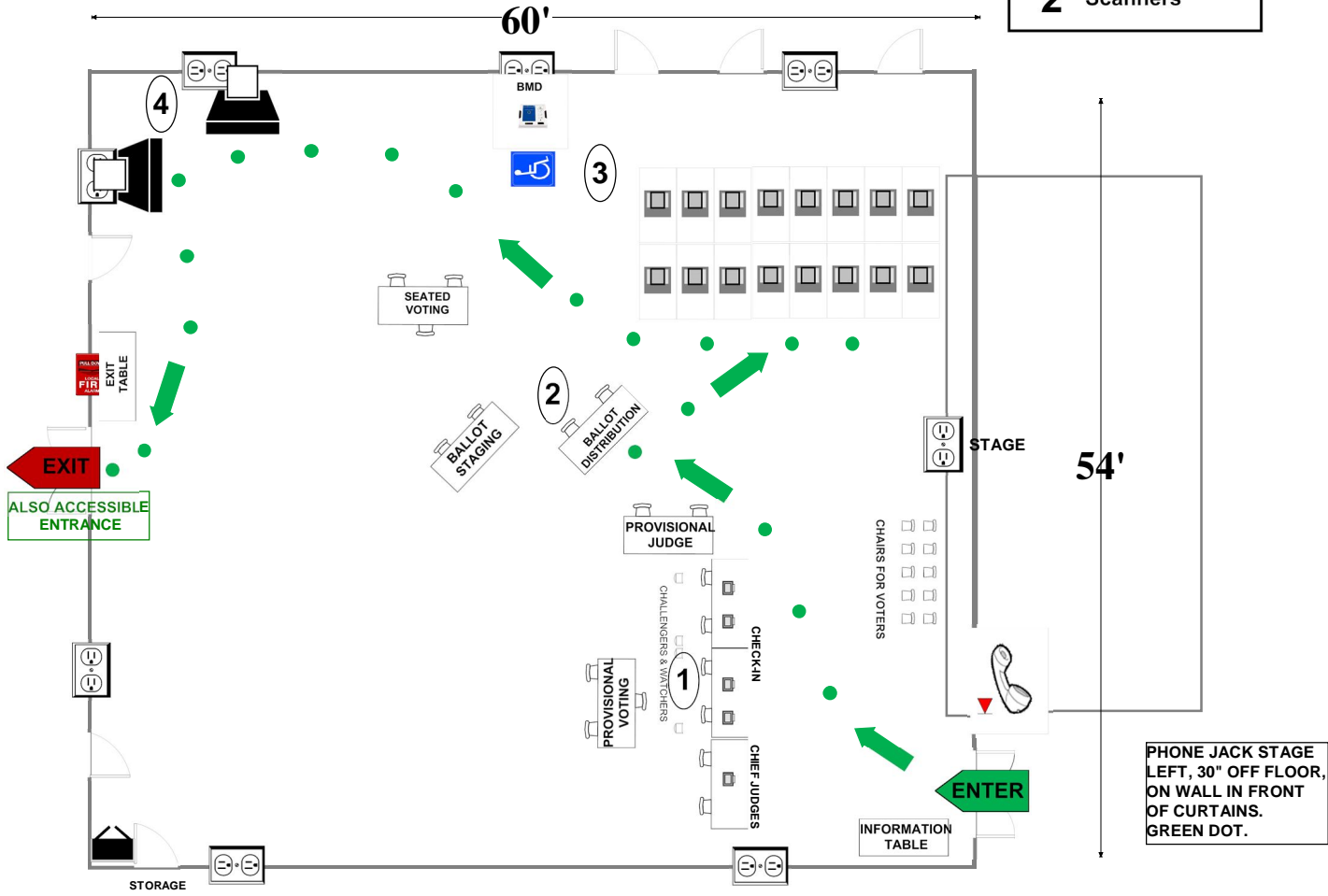
- 6'x2 1/2' Table
- Voting Booths with 2 1/2'x5' clearance
- Transfer Cart
- Window
- Ballot Marking Device
- Vending Machine
- Scanner
- Scanner Judge stands
2 - 3 feet from scanner
- Voter Travel
- Electronic Poll Book
- 2 plug outlet
- Fire alarm

Montgomery County
 Board of Elections
 6/6/2018

05-16 Stonegate Elementary School
 14811 Notley Rd
 Silver Spring, MD 20905
RECOMMENDED ROOM LAYOUT

ALL-PURPOSE ROOM

- 16** Voting Booths
- 3** Seated Voting
- 5** Poll Books
- 1** BMD
- 2** Scanners



PHONE JACK STAGE LEFT, 30" OFF FLOOR, ON WALL IN FRONT OF CURTAINS. GREEN DOT.

- 6'X2 1/2' Table
 - Ballot Marking Device
 - 1 Voter Travel
 - Voting Booths with 2 1/2'X5' clearance
 - Vending Machine
 - 2 plug outlet
 - Transfer Cart
 - Electronic Poll Book
 - Scanner
 - Fire alarm
 - Window
- Scanner Judge stands**
2 - 3 feet from scanner

Montgomery County
 Board of Elections
 6/6/2018

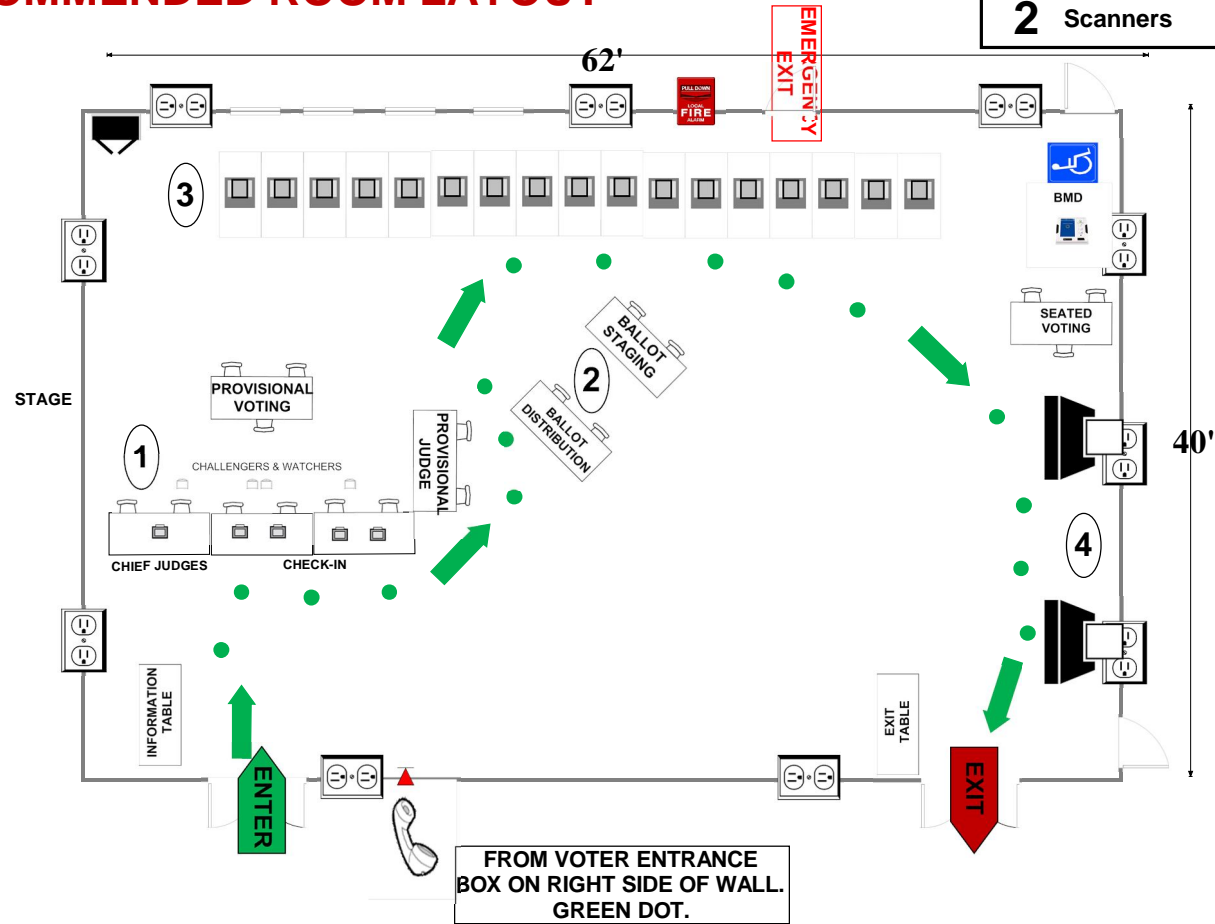
05-17 Fairland School Center

13313 Old Columbia Pk
Silver Spring, MD 20904

ALL-PURPOSE ROOM

RECOMMENDED ROOM LAYOUT

- 17** Voting Booths
- 3** Seated Voting
- 5** Poll Books
- 1** BMDs
- 2** Scanners



- | | | | | | |
|--|--|--|---|--|----------------|
| | 6'X2 1/2' Table | | Ballot Marking Device | | 1 Voter Travel |
| | Voting Booths with 2 1/2'X5' clearance | | Vending Machine | | 2 plug outlet |
| | Transfer Cart | | Electronic Poll Book | | Scanner |
| | Window | | Scanner Judge stands
2 - 3 feet from scanner | | Fire alarm |

Montgomery County
Board of Elections
6/5/2018

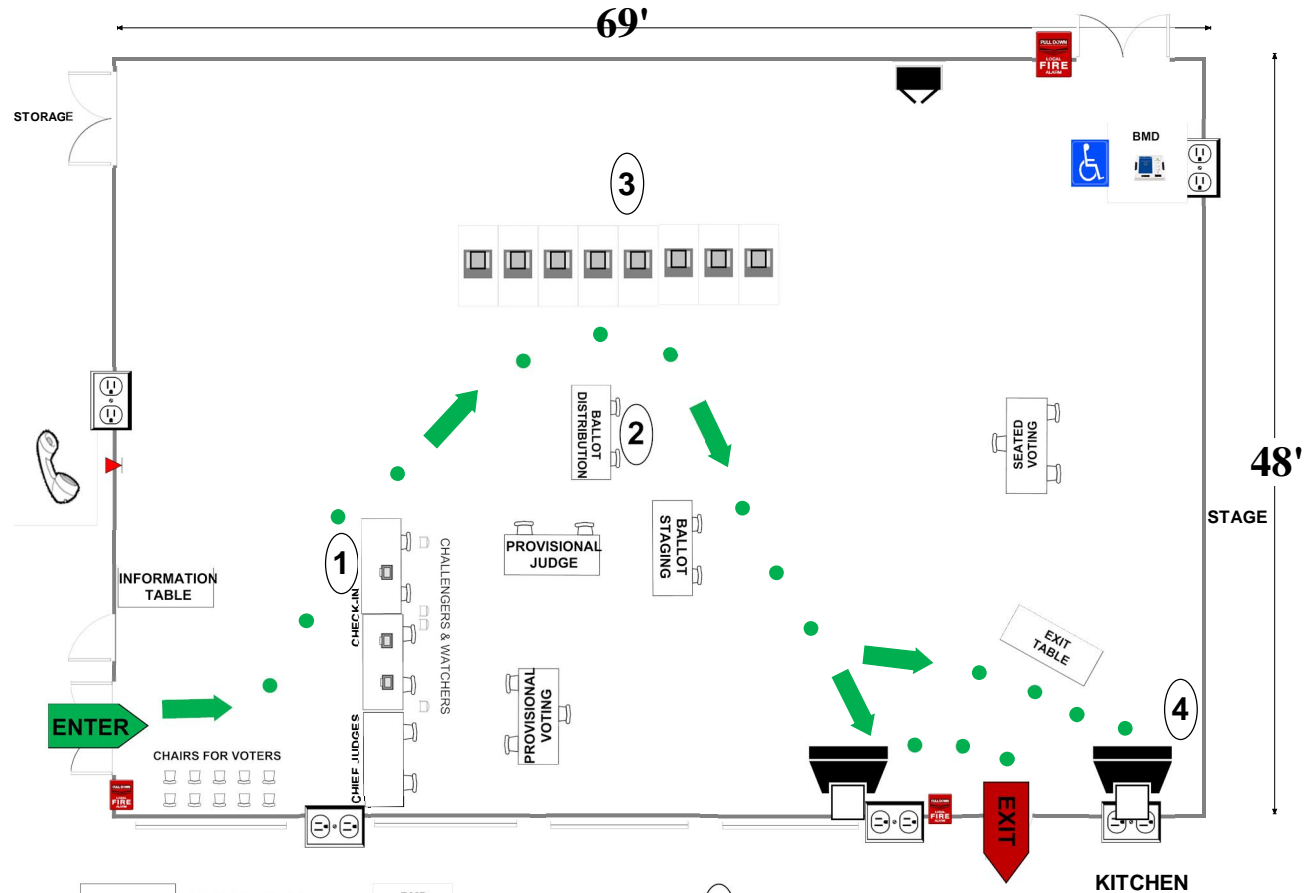
05-18 Burtonsville Elementary School

15516 Old Columbia Pike
Burtonsville, MD 20866

ALL-PURPOSE
ROOM

RECOMMENDED ROOM LAYOUT

- | | |
|----------|---------------|
| 8 | Voting Booths |
| 3 | Seated Voting |
| 3 | Poll Books |
| 1 | BMD |
| 2 | Scanners |



- | | | | | | |
|--|--|--------------------------------|-----------------------|--|---------------|
| | 6'x2 1/2' Table | | Ballot Marking Device | | Voter Travel |
| | Voting Booths with 2 1/2'x5' clearance | | Vending Machine | | 2 plug outlet |
| | Transfer Cart | | Electronic Poll Book | | Fire alarm |
| | Window | | Scanner | | |
| | | Scanner Judge stands | | | |
| | | 2 - 3 feet from scanner | | | |

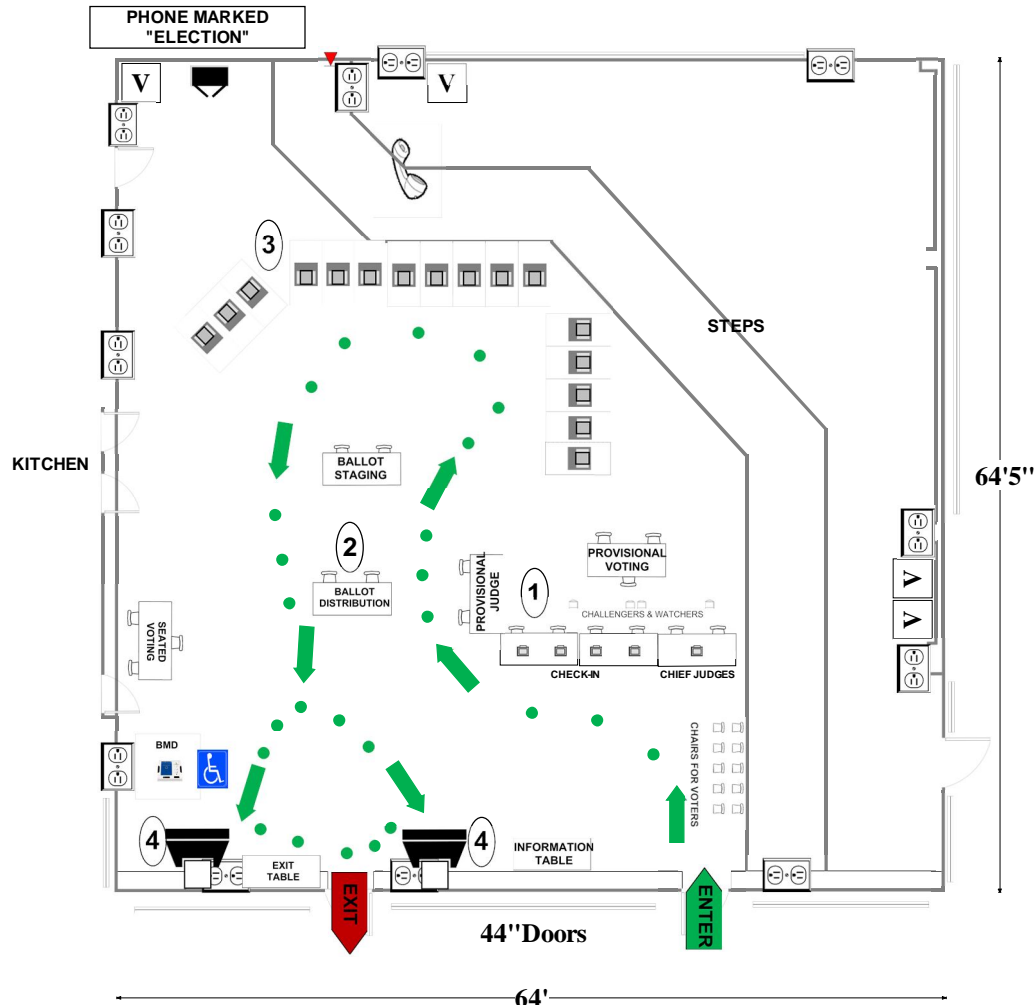
Montgomery County
Board of Elections
5/30/2018

05-19 Benjamin Banneker Middle School
 14800 Perrywood Dr
 Burtonsville, MD 20866

CAFETERIA

RECOMMENDED ROOM LAYOUT

- | | |
|-----------|---------------|
| 16 | Voting Booths |
| 3 | Seated Voting |
| 5 | Poll Books |
| 1 | BMD |
| 2 | Scanners |



- | | | | | | |
|--|--|--|-----------------------|--|---|
| | 6'x2 1/2' Table | | Ballot Marking Device | | 1 Voter Travel |
| | Voting Booths with 2 1/2'x5' clearance | | Vending Machine | | 2 plug outlet |
| | Transfer Cart | | Electronic Poll Book | | Scanner |
| | Window | | Fire alarm | | Scanner Judge stands
2 - 3 feet from scanner |

Montgomery County
 Board of Elections
 6/7/2018

05-21 East County Community Recreation Center

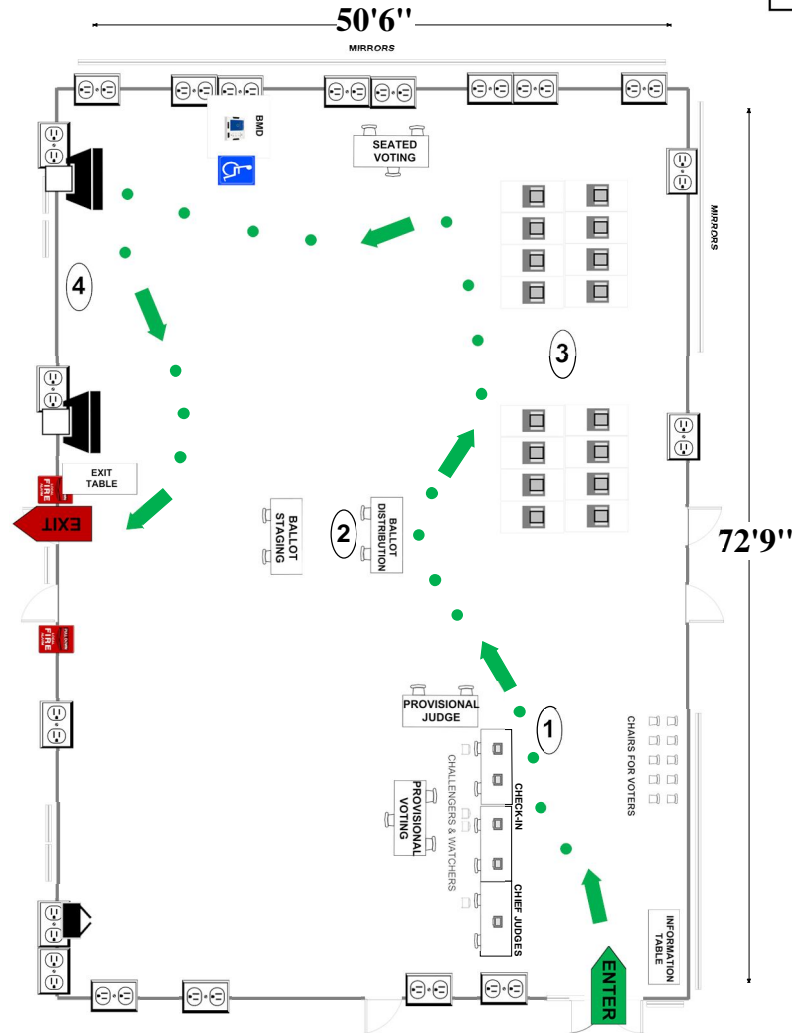
3310 Gateshead Manor Way

Silver Spring, MD 20904

RECOMMENDED ROOM LAYOUT

SOCIAL HALL

- | | |
|-----------|---------------|
| 16 | Voting Booths |
| 3 | Seated Voting |
| 5 | Poll Books |
| 1 | BMD |
| 2 | Scanners |



- | | | | | | |
|--|--|--|-------------------------|--|---------------|
| | 6'X2 1/2' Table | | Ballot Marking Device | | Voter Travel |
| | Voting Booths with 2 1/2'X5' clearance | | Vending Machine | | 2 plug outlet |
| | Transfer Cart | | Electronic Poll Book | | Fire alarm |
| | Window | | Scanner | | |
| | | | Scanner Judge stands | | |
| | | | 2 - 3 feet from scanner | | |

Montgomery County
Board of Elections
5/30/2018

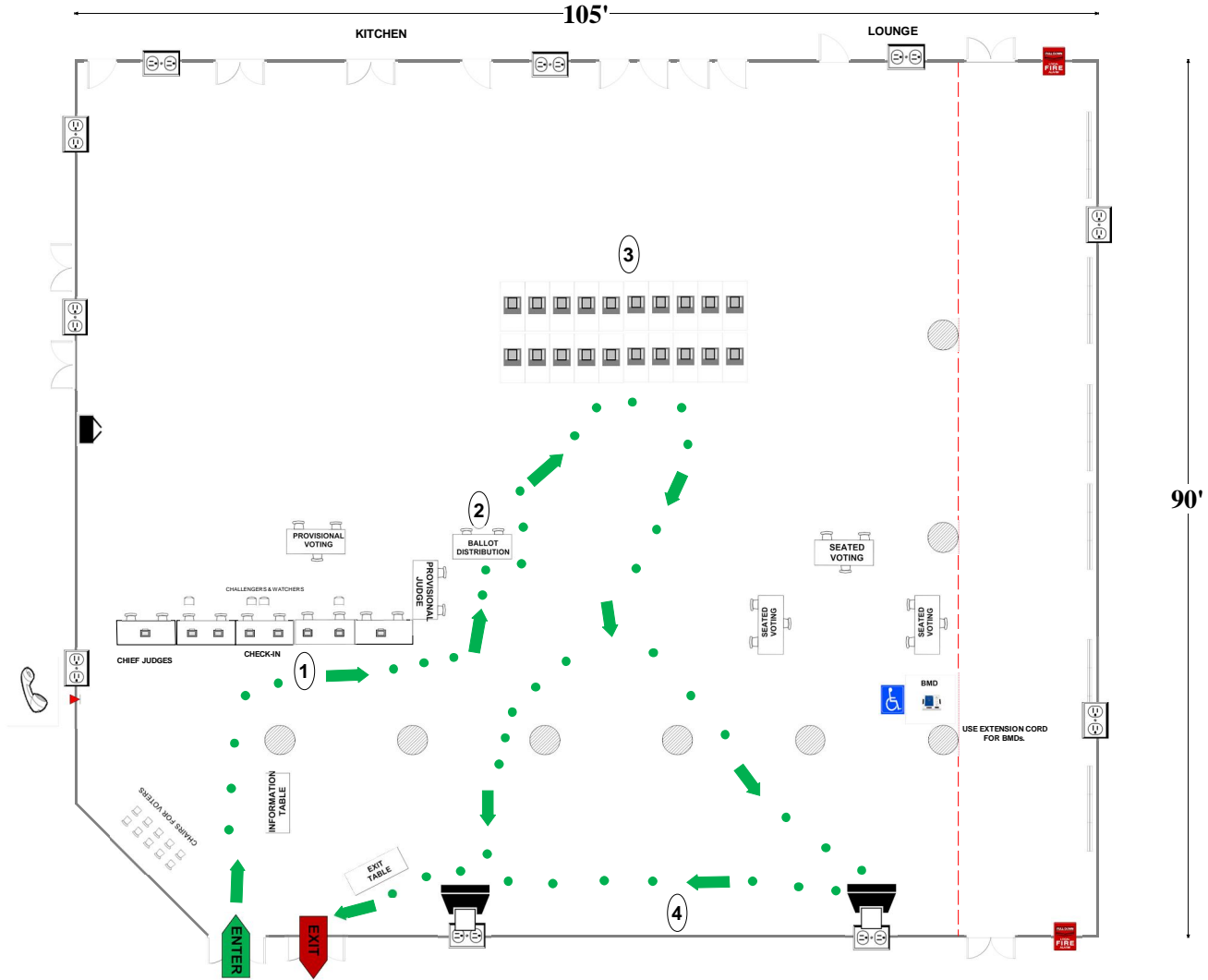
05-22 Springbrook High School

201 Valley Brook Drive
Silver Spring, MD 20904

RECOMMENDED ROOM LAYOUT

CAFETERIA

- 20 Voting Booths
- 9 Seated Voting
- 8 Poll Books
- 1 BMD
- 2 Scanners



- 6'X2 1/2' Table
- Voting Booths with 2 1/2'X5' clearance
- Transfer Cart
- Window
- Ballot Marking Device
- Vending Machine
- Electronic Poll Book
- Scanner
- Scanner Judge stands 2 - 3 feet from scanner
- Voter Travel
- 2 plug outlet
- Fire alarm
- Column

Montgomery County
Board of Elections
6/3/2018

05-23 Marilyn J. Praisner Community Recreation Center

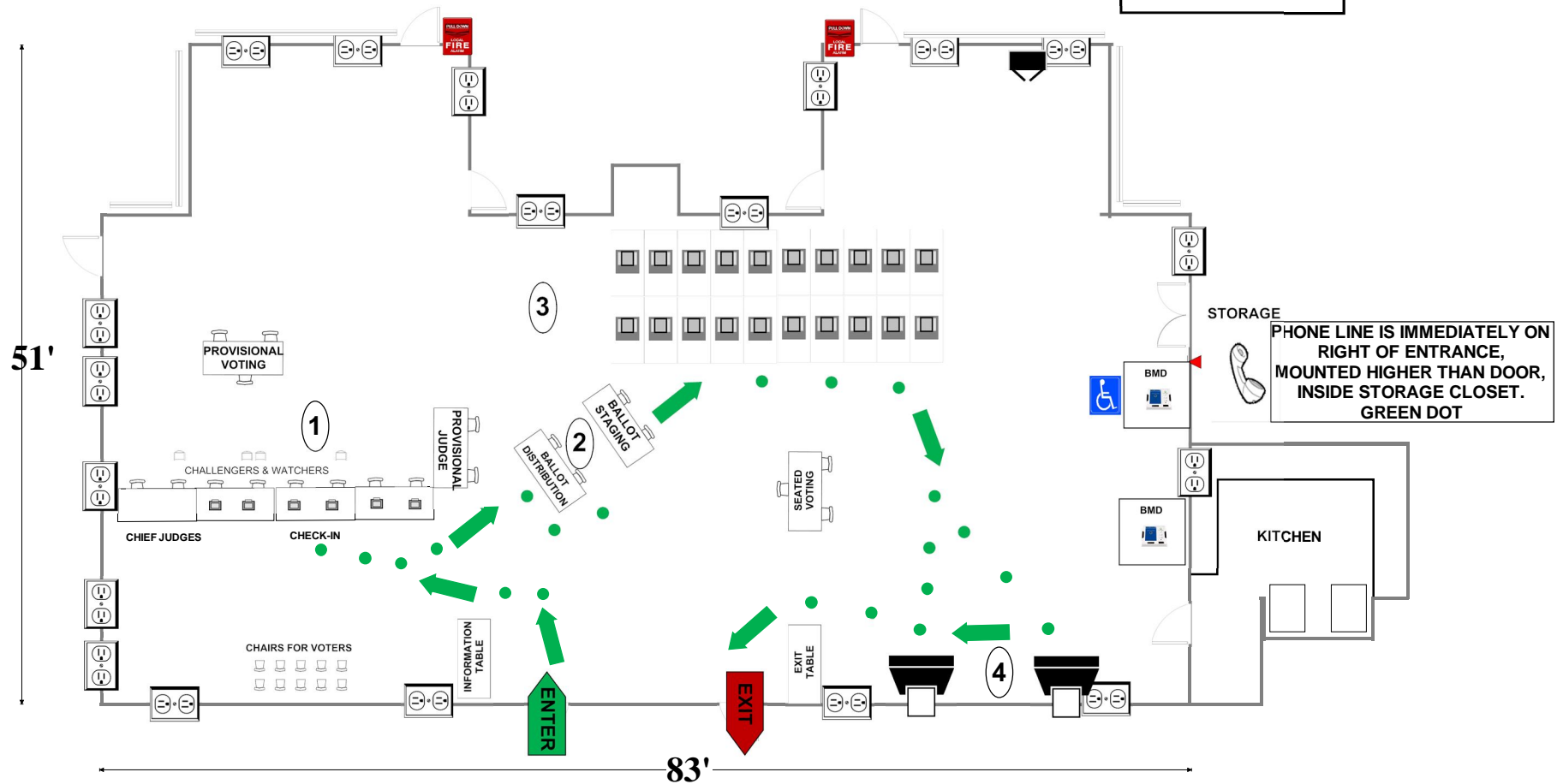
14906 Old Columbia Pike

Burtonsville, MD 20866

RECOMMENDED ROOM LAYOUT

SOCIAL HALL

- 20** Voting Booths
- 3** Seated Voting
- 6** Poll Books
- 2** BMDs
- 2** Scanners



- 6'X2½' Table
- Voting Booths with 2½'X5' clearance
- Transfer Cart
- Window
- Ballot Marking Device
- Vending Machine
- Electronic Poll Book
- Scanner
- Scanner Judge stands**
2 - 3 feet from scanner
- 1** Voter Travel
- 2 plug outlet
- Fire alarm

Montgomery County
Board of Elections
6/5/2018