

Montgomery County Birth to Five Head Start Community- Based Model



Office of Head Start Regional Realignment

OHS WEST: 13

(AK, ID, OR, WA, HI, CO, MT, UT, WY, KS, CA, NV, NE)

(American Samoa, Guam, Northern Mariana Islands, Palau)

OHS MIDWEST: 10

(IL, IN, MN, WI, OH, MI, IA, MO, SD, ND)

OHS NORTHEAST: 9

(CT, MA, ME, NH, RI, VT, NY, NJ, PA)

OHS SOUTHEAST: 11

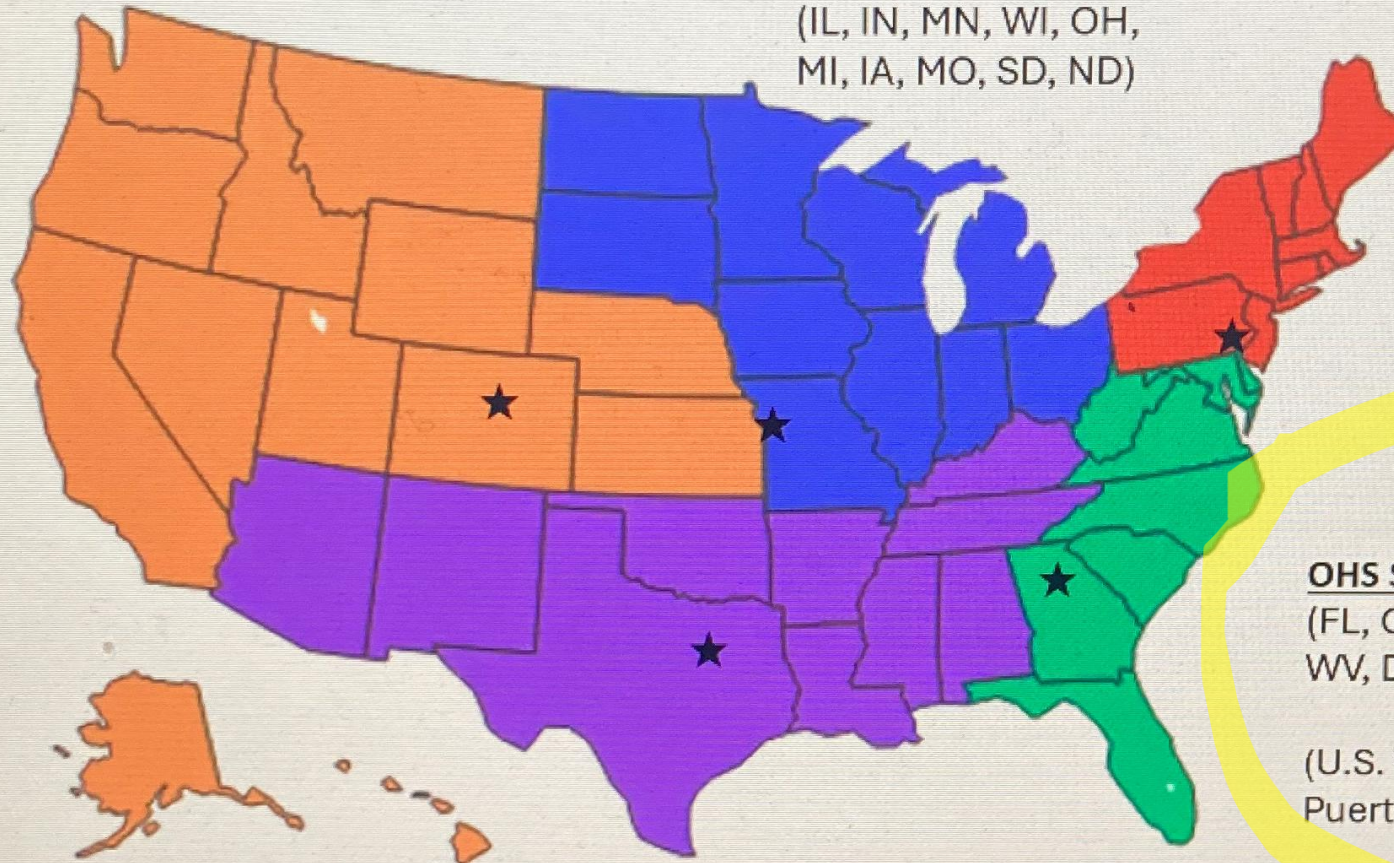
(FL, GA, NC, SC, MD, VA, WV, DC, DE)

(U.S. Virgin Islands, Puerto Rico)

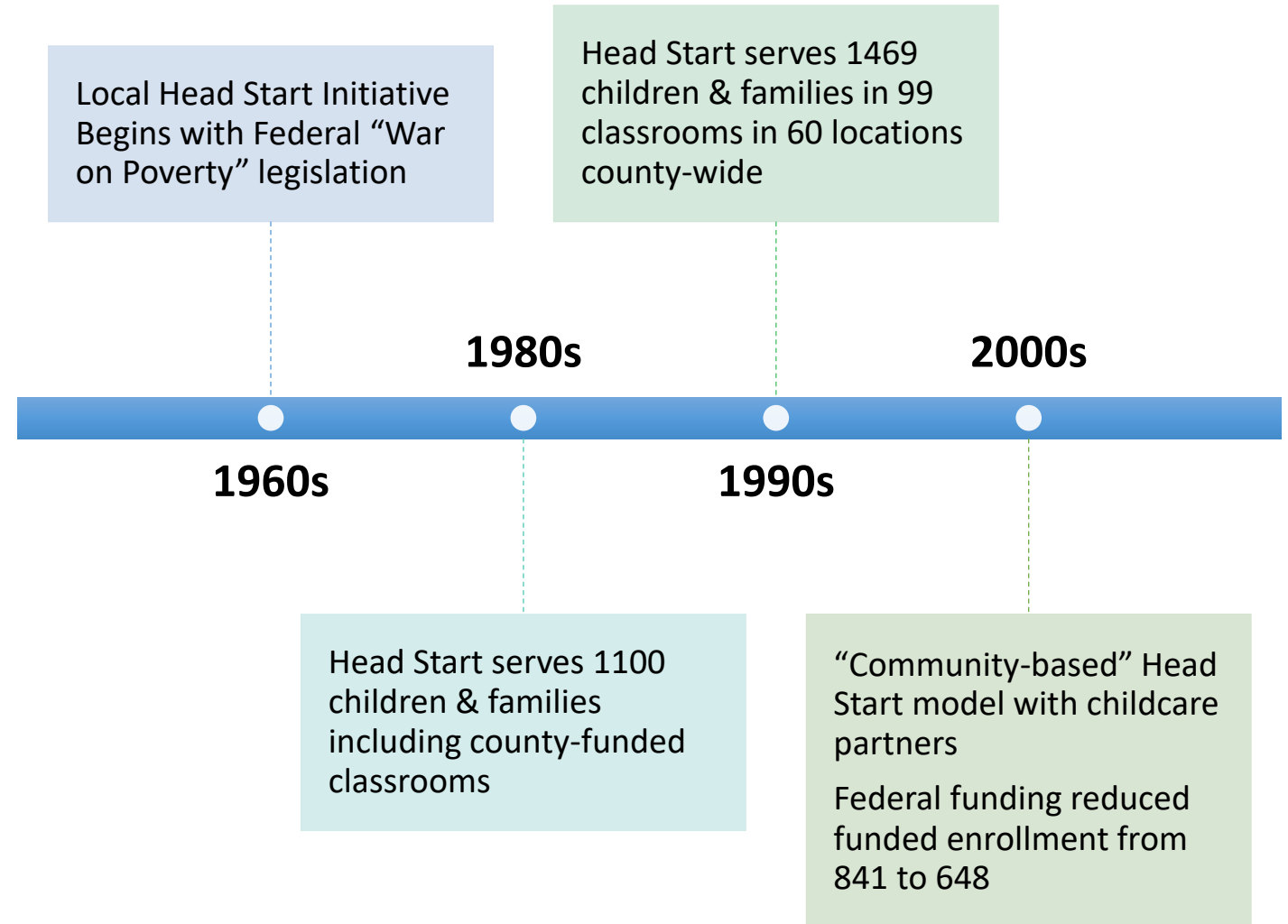
OHS SOUTHWEST: 10

(OK, TX, NM, AZ, AR, LA, MS, AL, KY, TN)

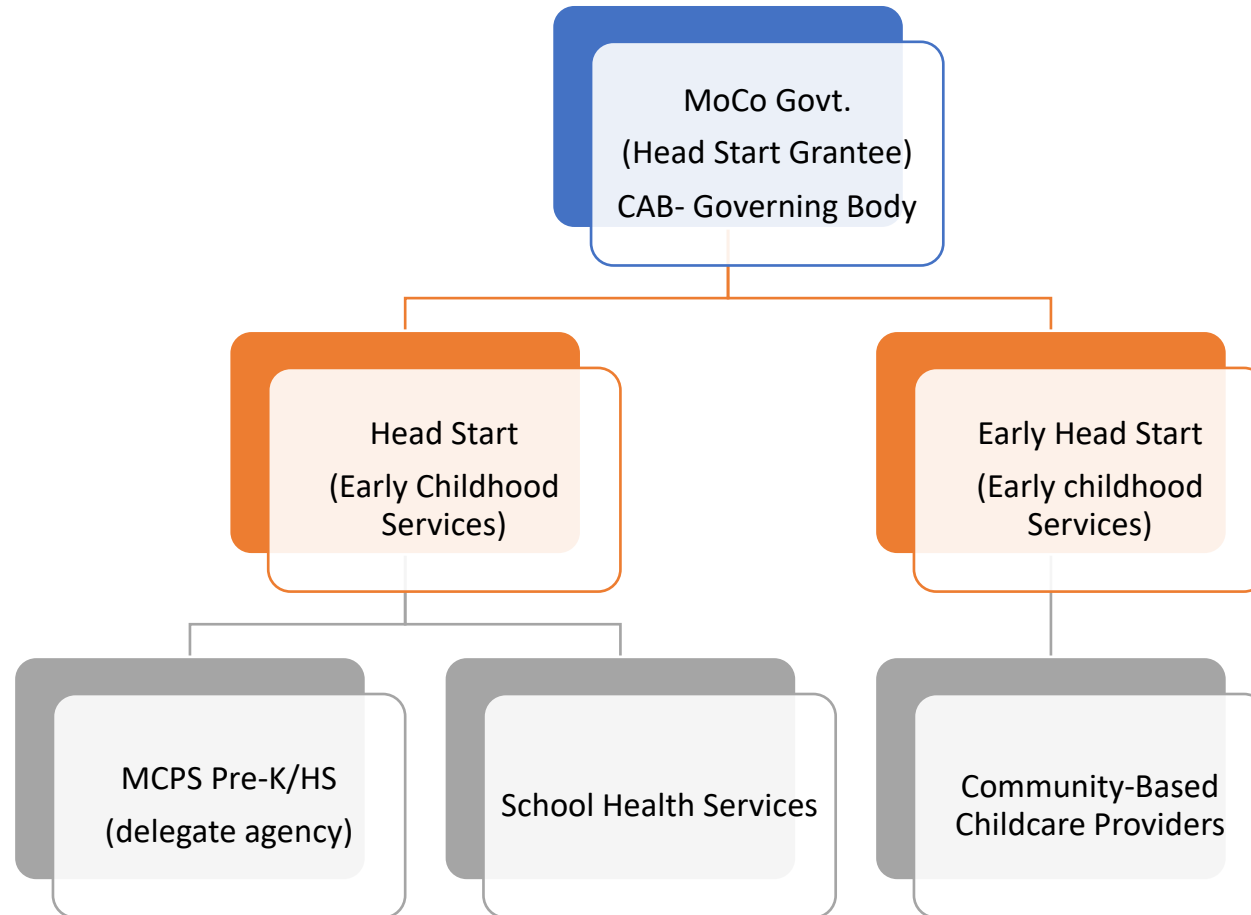
TRIBAL: 151 Recipients



Brief History of Head Start in Montgomery County



Montgomery County Birth-to-Five Head Start Partners



Head Start Base Funding Program

Head Start Base Funding is granted in 5-year project periods:

- Comprehensive early childhood education and social services support to 525 children and families



Montgomery County Birth-to-Five Head Start Model

	Head Start	Early Head Start
Enrollment	450	75
Center-Based	MCPS – 24 classrooms	Child Care Centers Family Child Care Providers
Staff Support	MCPS Staff Pre-K/HS Coordinators Teachers <ul style="list-style-type: none">• Teacher Assistants• FSWs• MCPS Specialists School Health Services Staff <ul style="list-style-type: none">• Nurses• Techs• Dental Hygienists• Income Assistant Specialist	ECS Staff <ul style="list-style-type: none">• HS program manager• ECE Coach• 2 Family Advocates• Nurse• MH Consultant



Shared Governance



Head Start Supporting ECEI Strategic Goals

Outcome 1 - Expand the availability of ECE seats for infants, toddlers and preschoolers.

Outcome 3 – Ensure sustainability of existing family and center-based programs to reduce provider attrition and loss of available seats.



Montgomery County Birth to Five Head Start Community- Based Model

Comprehensive service model for 75
children ages birth to 3

Partnership with DHHS and child-care
providers

Incentives for child-care providers:
annual cost per child; admin support;
T/TA; equipment & supplies



Partnership with Childcare Programs

- \$17,965/child/annually
- Serve Head Start eligible families with children 0-3 years
- Collaboration as a Head Start childcare hub and receive wrap around services for staff and families including:
 - Training & technical assistance
 - ECE coaching support
 - Family Engagement Services
 - Health Services for children
 - Administrative support
- Education supplies and equipment



Partnership with Childcare Programs Requirements

- Licensed through Maryland State of Education
- Registered and published as a level 3 in Maryland EXCELS
- Responsible for the early childhood education component of the program
- Provide families with the option to access the Maryland State Childcare Scholarship and the County's Working Parents' Assistance (WPA) programs to participate in an extended day program option for children.



Partnership with Childcare Programs Requirements

Full participation in comprehensive services
(site visits by county staff to support your
program, parent engagement activities,
coaching and other professional development)

Agree to county's review of last MSDE-OCC
inspection report

Two letters of recommendations from
current/past parents of your program



FAQs

How will
programs get
paid?

Programs will receive monthly payments from Montgomery County (\$1497 for 12 months; 9-hour Early Head Start extended day based on enrollment).

Minimum Enrollment Slots for FCCP: 2

Minimum Enrollment Slots for Childcare Centers: 4

How are
families
recruited?

Families will apply directly with Montgomery County and receive a list of participating childcare programs to select from.

Income-eligible families with birth –to- three-year-old living in Montgomery County may also apply, space permitting.

What are the
teacher
credential
requirements?

Childcare centers requires two teachers with a minimum of the Infant & Toddler CDA.

Family Childcare Provides requires a minimum of FCCP CDA.



FAQs

How do I find information on the County's Working Parents Assistance Program (WPA)?

[Montgomery County - Department of Health and Human Services - Children, Youth and Family Services - Child Care Subsidy Program](#)

Our childcare center has several locations. Do we apply with one application?

Childcare programs with more than one location must submit a separate application for each location.

Where can I access the application?

The link to the application will be posted on Montgomery County Community Action Agency Website.

[Community Action Agency](#)



FAQs

What is the income eligibility requirements for families to enroll?

Families must meet 100% Federal Poverty Level ([FPL](#))

Are we allowed to charge families a co-pay?

No. The Federal Head Start program requirements do not allow programs to charge families fees for service.

When will the program begin?

Winter 2026 (January) Birth to Five services or community-based providers begins!



Application
Opens
November 1st!
Childcare
Provider
Application
Form

