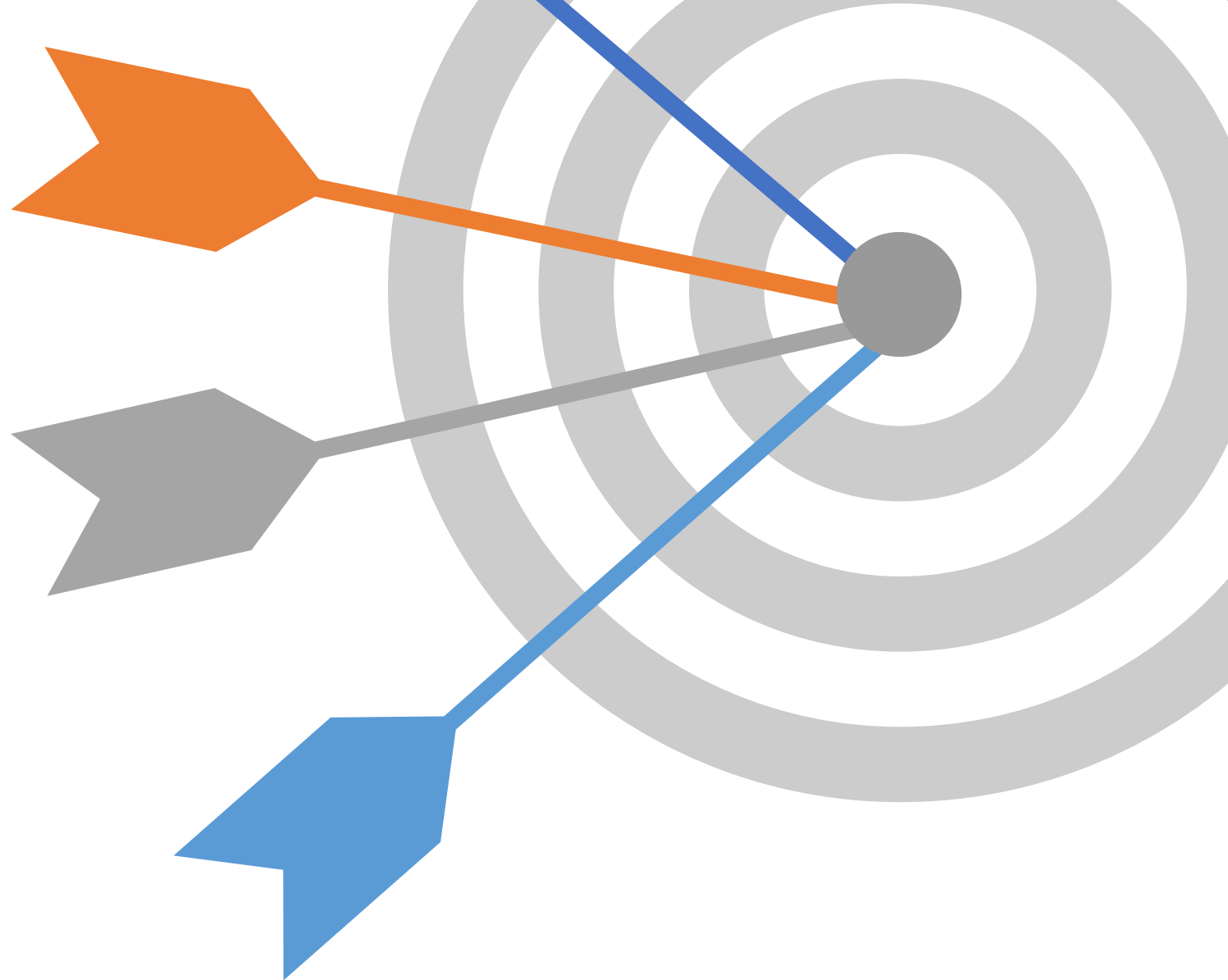


Healthy Montgomery 2030

Goal Setting



Healthy Montgomery 2030 Goal Setting

Marc Elrich, County Executive

James C. Bridgers, Jr., PhD, MBA, Director
Department of Health and Human Services

Kisha N. Davis, MD, MPH, Health Officer
Department of Health and Human Services

Nina C. Ashford, DrPH, MPH, Chief
Public Health Services

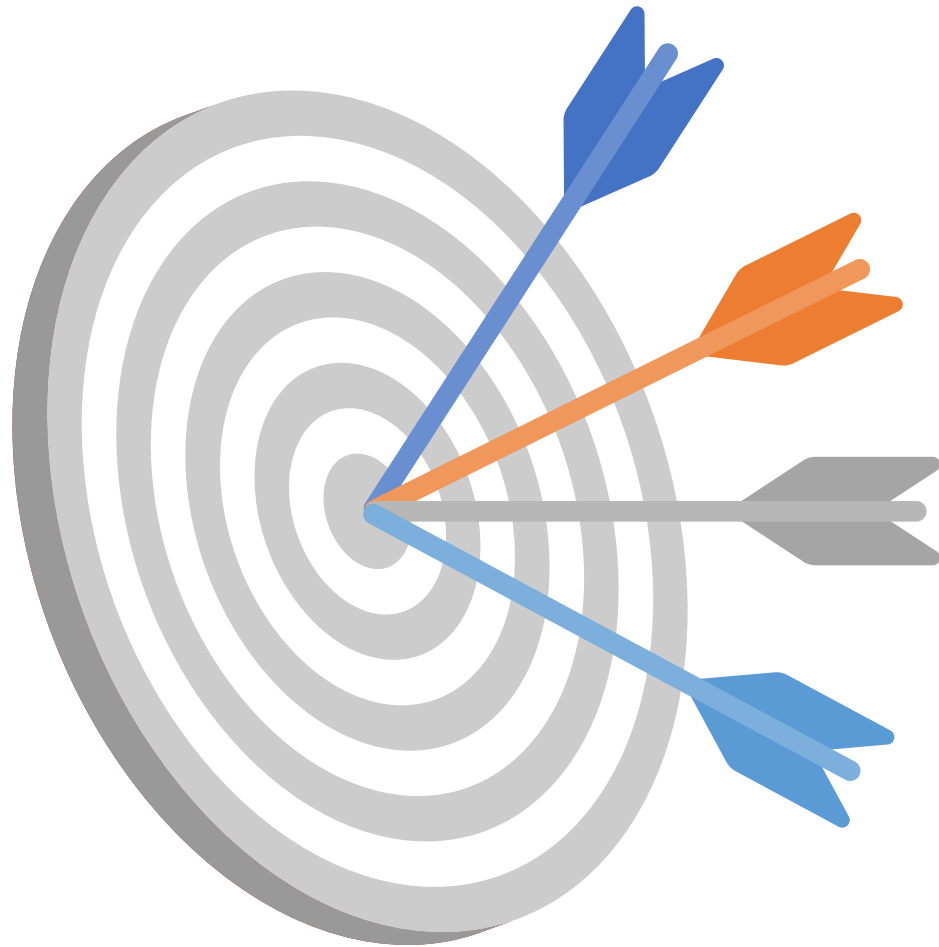
A Publication of the
Montgomery County Department of Health and Human Services
Public Health Services
Health Planning and Epidemiology

401 Hungerford Drive, Rockville, MD 20850
(240) 777-1872
Email: Chunfu.liu@MontgomerycountyMD.gov
Web: <http://www.montgomerycountymd.gov/hhs/>

April 2024

Suggested citation: Montgomery County, Maryland, Department of Health and Human Services, Health Planning and Epidemiology. *Healthy Montgomery 2030 Goal Setting*. Rockville, Maryland. 2024.

Baseline and Goal Setting



U.S. Baseline

2015-2020; HP 2030

MD Baseline

2013; MD SHIP 2017

MoCo Baseline

2020-2021; HM 2030

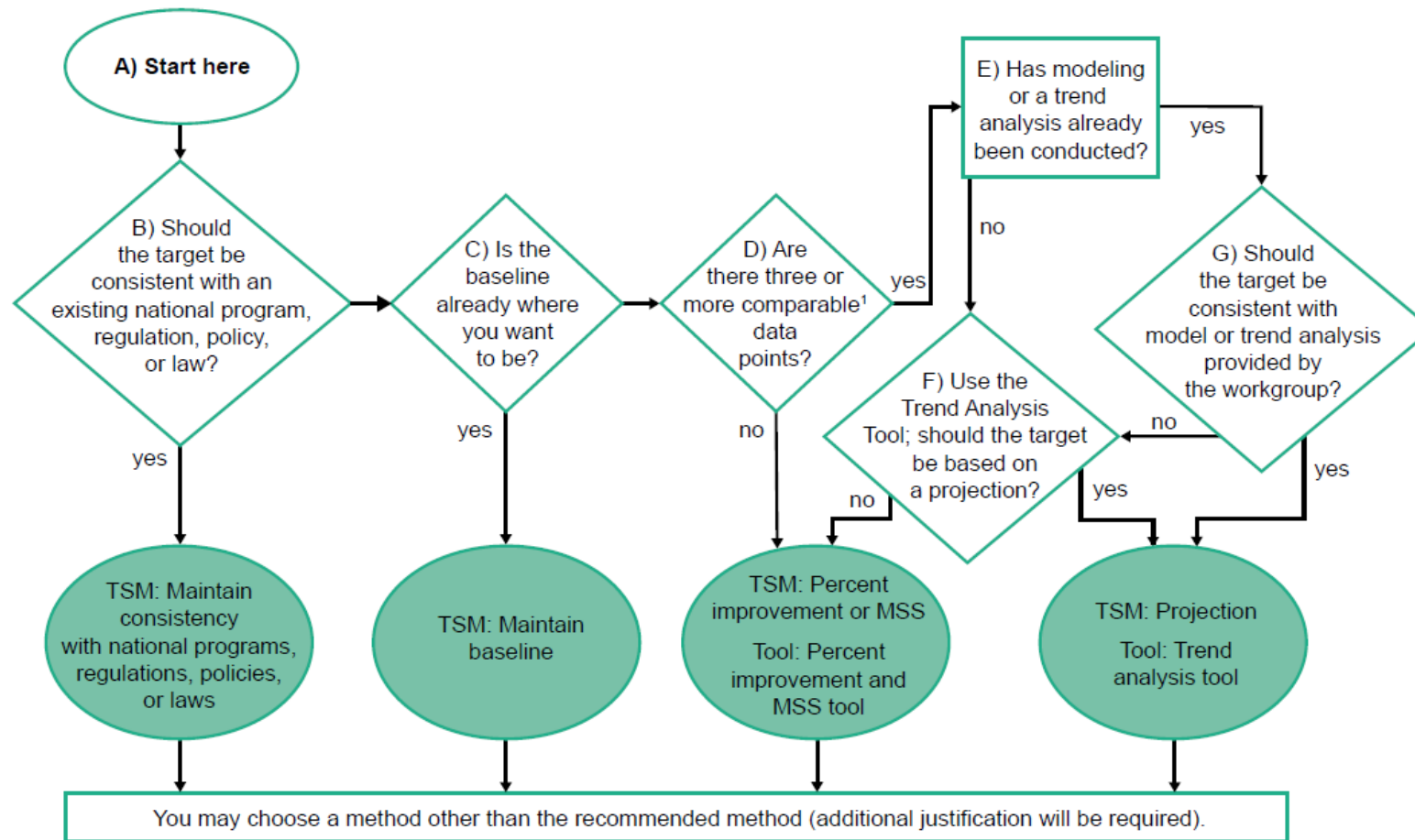
Methods – HP 2030

Table 2. Summary of core HP2030 objectives by target-setting method as of August 2020

Target-setting method	Number of objectives	Percent of total
Percent improvement	47	13.2
Percentage point improvement	98	27.6
Projection	86	24.2
Minimal statistical significance	89	25.1
Consistency with national programs, regulations, policies, or laws	23	6.5
Maintain baseline	12	3.4
Total	355	100.0

SOURCE: National Center for Health Statistics, Healthy People 2030 database.

Methods – HP 2030



¹Data points are considered comparable if the data were collected using the same data system, methods, and question(s).

NOTES: TSM is target-setting method. MSS is minimal statistical significance.

SOURCES: National Center for Health Statistics and Department of Health and Human Services, Office of Disease Prevention and Health Promotion, HP2030.

Methods – MD SHIP 2017

Measure	2013	Proposed 2017 Goal	Target Setting Method (2013 data used as baseline for target calculations)
1. Reduce infant mortality	6.6	6.3	5% improvement to hit HP 2020 target
2. Reduce the percent of low birth weight births	8.5	8.0	6% improvement=1/2 of 2020 target
3. Reduce rate of sudden unexpected infant deaths (SUIDs)**	0.90	0.86	5% improvement to hit HP 2020 target
4. Reduce the teen birth rate (ages 15-19)	19.3	17.8	60% of previous improvement
5. Increase the % of pregnancies starting care in the 1st trimester	61.9	66.9	8% improvement
6. Increase the proportion of children who receive blood lead screenings	66.2	69.5	5% improvement
7. Increase the % entering kindergarten ready to learn***	83.0	85.5	3% improvement
8. Increase the %of students who graduate high school***	86.4	88.6	2.5% improvement (modest since we are above
9. Increase the % of adults who are physically active	48.0	50.4	5% improvement
10. Increase the % of adults who are at a healthy weight	35.9	36.6	2.5% improvement
11. Reduce the % of children who are considered obese (high school only)	11.0	10.7	2.5% improvement
12. Reduce the % of adults who are current smokers	16.3	15.5	5% improvement
13. Reduce the % of youths using any kind of tobacco product (high school only)	16.9	15.2	10% improvement

Methods – HM 2030

- Comparison with HP 2030 and MD SHIP 2017
- Monitoring trend over time
- Application of new methods (projection, minimal statistical significance)

Methods

- Comparison with HP 2030 and MD SHIP 2017

Measure	Montgomery County 2021 Rate	Healthy People 2030 Goal	Did MoCo Achieve This Goal?	MD SHIP 2017 Goal	Did MoCo Achieve This Goal?
Suicide Mortality	7.7 per 100,000	12.8 per 100,000	Yes ✓	9.0 per 100,000	Yes ✓

Methods

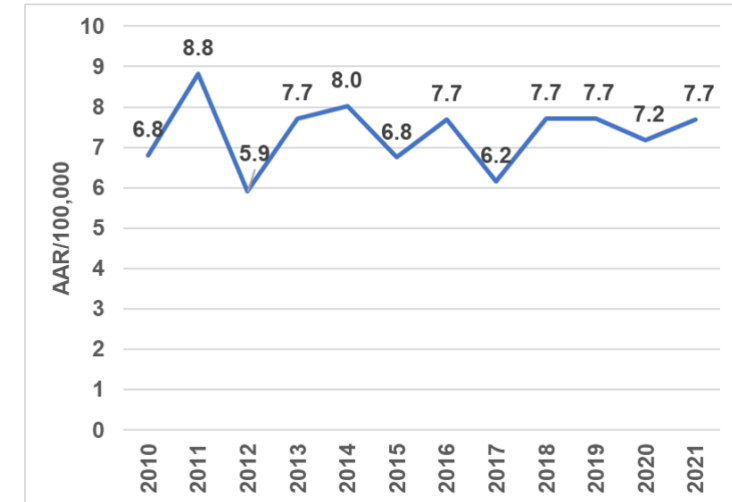
- Monitoring trend over time

Measure	Montgomery County 2021 Rate	Montgomery County Trend, 2010-2021	Method
Suicide Mortality	7.7 per 100,000	Fluctuating	2.5% Improvement

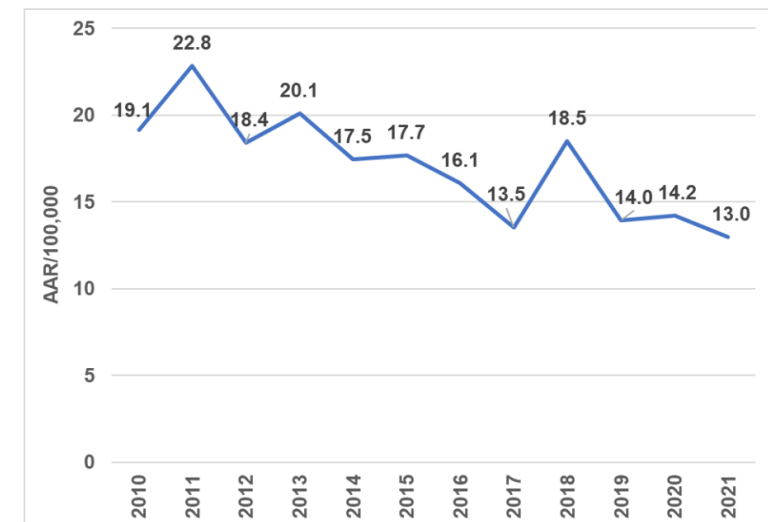
Measure	Montgomery County 2021 Rate	Montgomery County Trend, 2010-2021	Method
Chronic Lower Respiratory Disease Mortality	13.0 per 100,000	Decreasing	Projection

Suicide Mortality

Suicide Mortality Age-Adjusted Rate, Montgomery County, 2010-2021



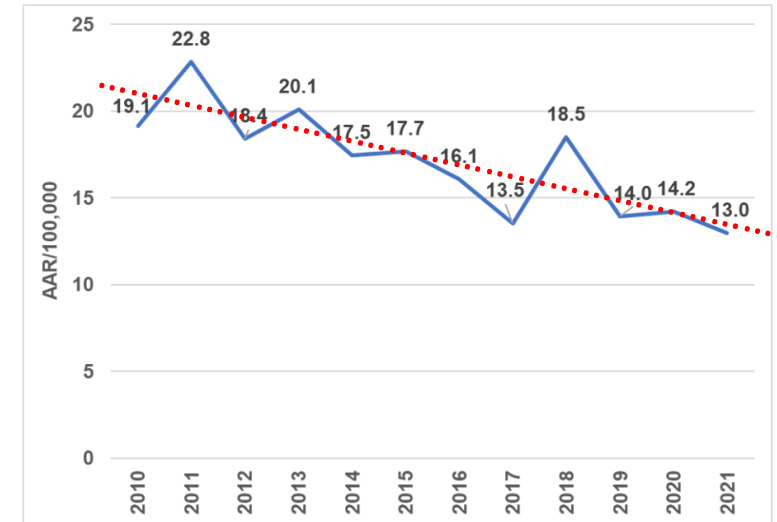
Chronic Lower Respiratory Disease Mortality Age-Adjusted Rate, Montgomery County, 2010-2021



Methods

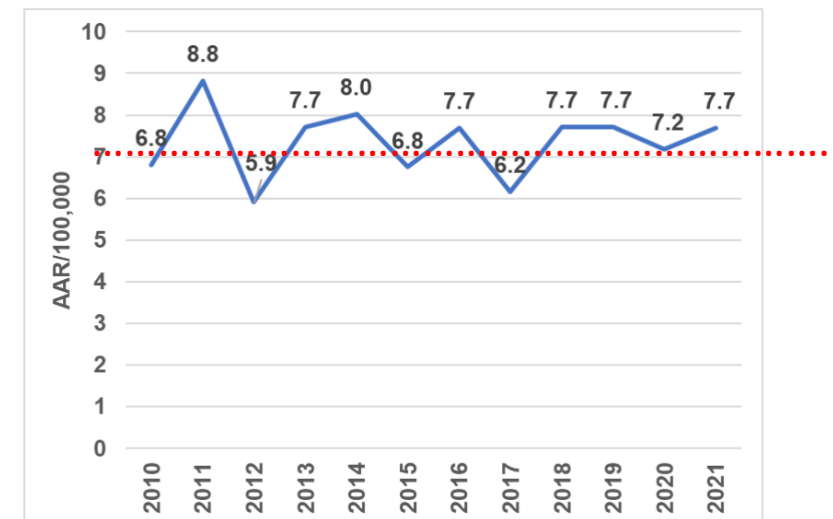
- Chronic Lower Respiratory Disease Mortality – Projection
 - Trend is decreasing (desired direction)
 - If moving in the opposite direction, the projection would not be an improvement from baseline
 - Trend is approximately linear
 - If trend is not linear, projection line would be horizontal and not be an improvement from baseline
- Suicide Mortality – 2.5% Improvement
 - Trend is fluctuating
 - Projection cannot be used because line would be horizontal with no desired direction

Chronic Lower Respiratory Disease Mortality Age-Adjusted Rate, Montgomery County, 2010-2021



Suicide Mortality

Suicide Mortality Age-Adjusted Rate, Montgomery County, 2010-2021



HM 2030 Core Measures

Table 1. Healthy Montgomery Core Measures

Maternal and Infant Health	Mothers who Received Early Prenatal Care Infant Mortality Preterm Births
Behavioral health	Mental Health Related ER Visit Suicide Mortality Drug-Induced Mortality Substance Abuse ER Visit
Chronic Disease	Obesity: Adults who are Overweight or Obese Diabetes: Diabetes ER Visit Diabetes Mortality Cardiovascular health: Heart Disease Mortality High Blood Pressure Prevalence Heart disease ER Visit Chronic Lower Respiratory Disease Mortality Chronic Lower Respiratory Disease ER Visit
Infectious Disease	Incidence of TB Incidence of Chlamydia Incidence of Gonorrhea Incidence of Syphilis Incidence of HIV
Injury	Firearm Hospitalization Fall Mortality Fall Hospitalization Fall ER Visit Motor Vehicle ER Visit

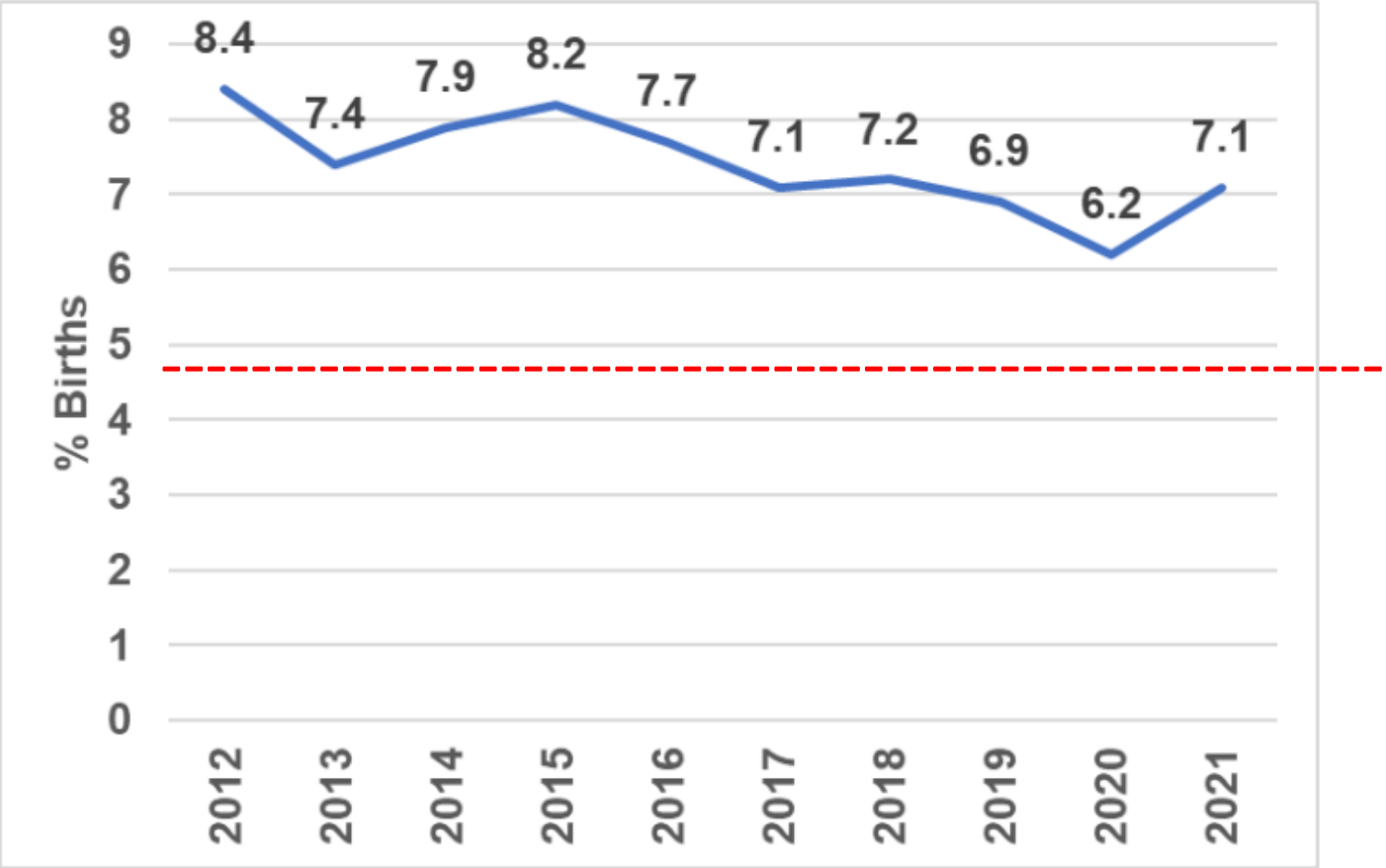
Category	Measures/Indicators	MoCo 2023 Method	MoCo 2030 Method
Maternal and Infant Health	Mothers who received "early and adequate prenatal care"	5% improvement	Percentage point improvement (h=0.1)
	Infant Mortality	2.5% Improvement	Projection at 75% prediction interval
	Preterm Births	5% improvement	minimal statistical significance
Behavioral health	ER Visits for Mental Health	2.5% Improvement	2.5% Improvement
	Suicide (mortality)	2.5% Improvement	2.5% Improvement
	Drug-Induced Mortality	2.5% Improvement	2.5% Improvement
	Substance abuse ER	10% Improvement	10% Improvement
Chronic Disease	Obesity:		
	Adults who are overweight or obese	5% Improvement	Percentage point improvement (h=0.1)
	Diabetes:		
	ER visits for diabetes	2.5% Improvement	2.5% Improvement
	Diabetes Mellitus Mortality	2.5% Improvement	2.5% Improvement
	Cardiovascular health:		
	Heart disease mortality	5% improvement	5% improvement
	High blood pressure prevalence	10% Improvement	Percentage point improvement (h=0.1)
	Heart disease ER Visit	2.5% Improvement	2.5% Improvement
Infectious Disease	Chronic Lower Respiratory Disease Mortality	2.5% Improvement	Projection at 75 % prediction interval
	Chronic Lower Respiratory Disease ER Visit	2.5% Improvement	minimal statistical significance
	TB	10% Improvement	10% Improvement
	Incidence of Chlamydia	2.5% Improvement	2.5% Improvement
	Incidence of Gonorrhea	2.5% Improvement	2.5% Improvement
	Incidence of Syphilis	2.5% Improvement	2.5% Improvement
Injury	Incidence of HIV rate	2.5% Improvement	2.5% Improvement
	Firearm Hospitalization	2.5% Improvement	minimal statistical significance
	Fall Mortality	2.5% Improvement	minimal statistical significance
	Fall Hospitalization	2.5% Improvement	2.5% Improvement
	Fall ER	2.5% Improvement	2.5% Improvement
	Motor Vehicle ER	2.5% Improvement	2.5% Improvement

HM 2030 Core Measures and Methods

Target Setting Method	Number of Measures	Percentage of Total
Percent Improvement	16	64.0
Percentage Point Improvement	3	12.0
Minimal Statistical Significance	4	16.0
Projection	2	8.0
Total	25	100.0

Maternal and Infant Health

Percent Births with Late/No Prenatal Care, Montgomery County, 2012-2021

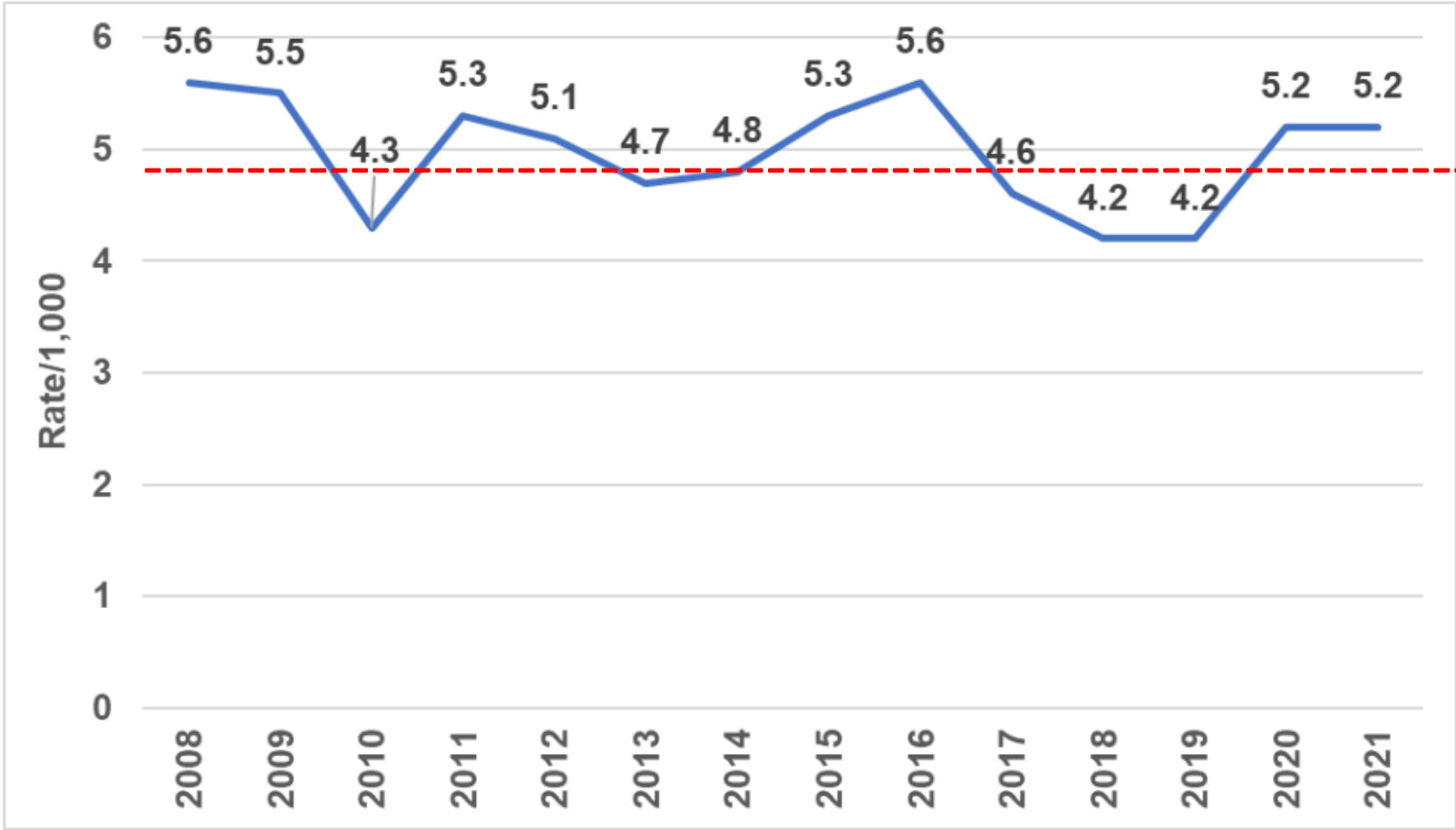


HM 2030 Goal
4.8%

HP 2030	MD SHIP 2017
19.5%	33.1%

Maternal and Infant Health

Infant Mortality Rate, Montgomery County, 2008-2021

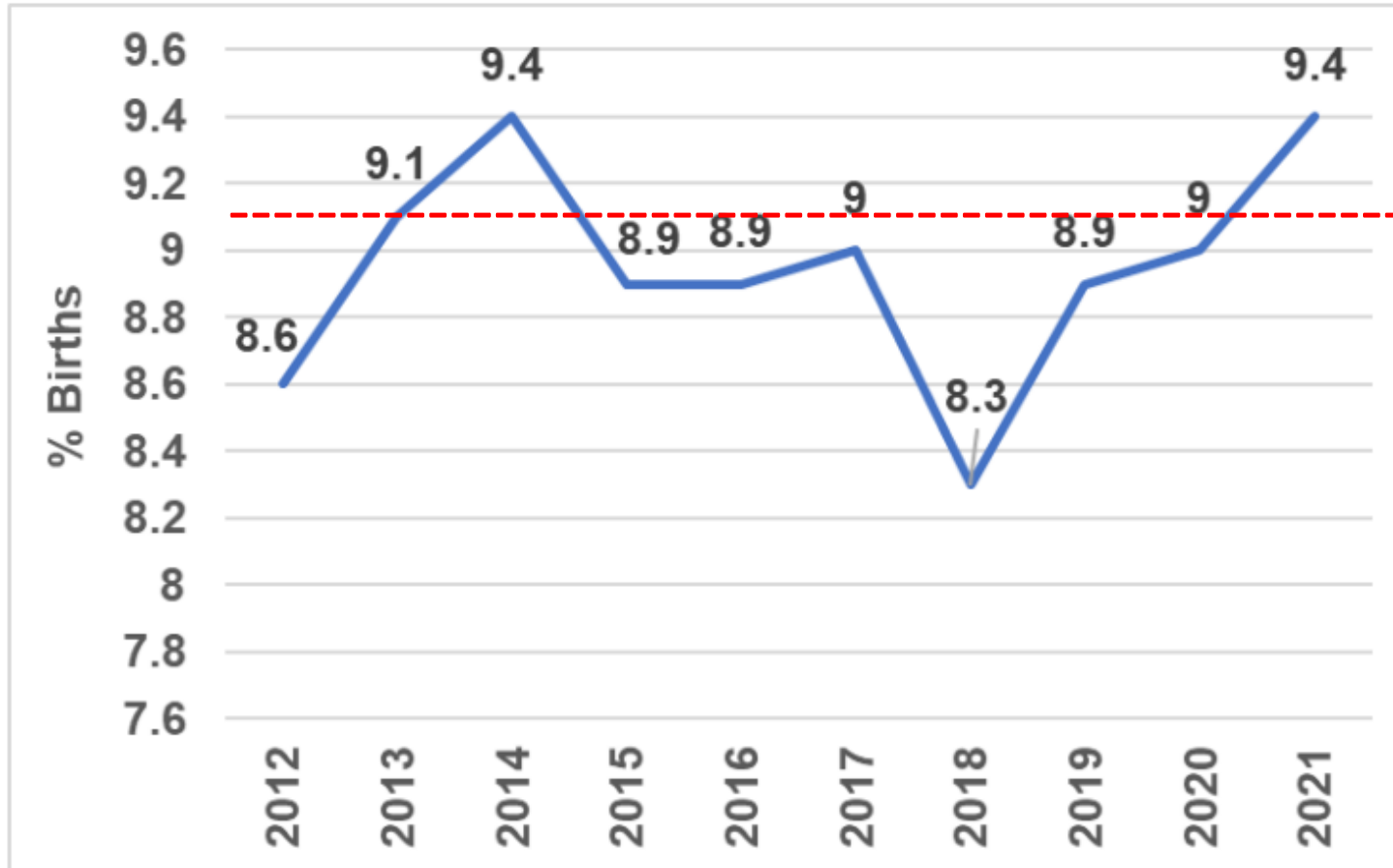


HM 2030 Goal
4.9

HP 2030	MD SHIP 2017
5.0	6.3

Maternal and Infant Health

Percentage of Preterm Births, Montgomery County, 2012-2021

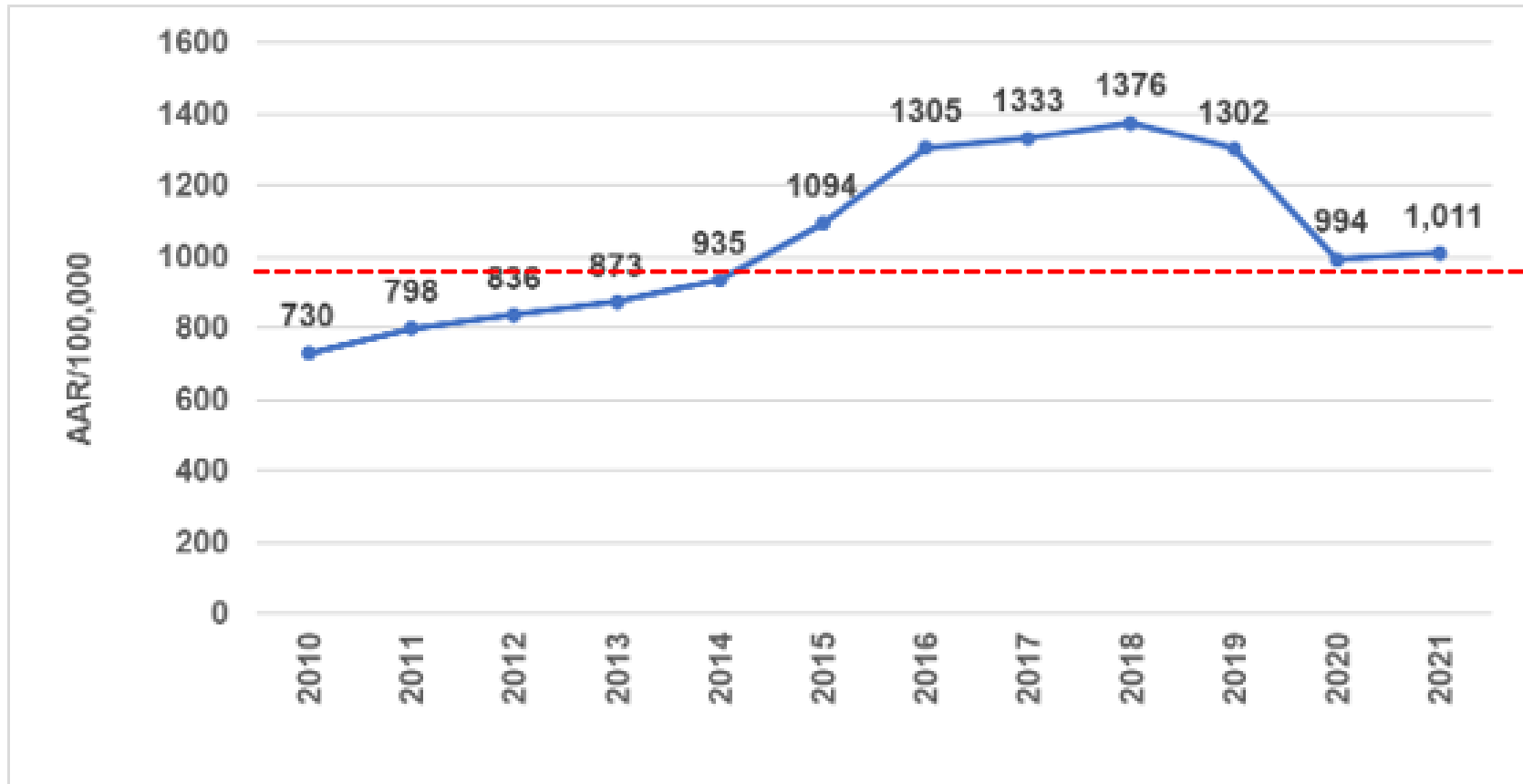


HM 2030 Goal
8.8%

HP 2030
9.4%

Behavioral Health

Mental Health Related ER Visit Age-Adjusted Rate, Montgomery County 2010-2021



HM 2030 Goal

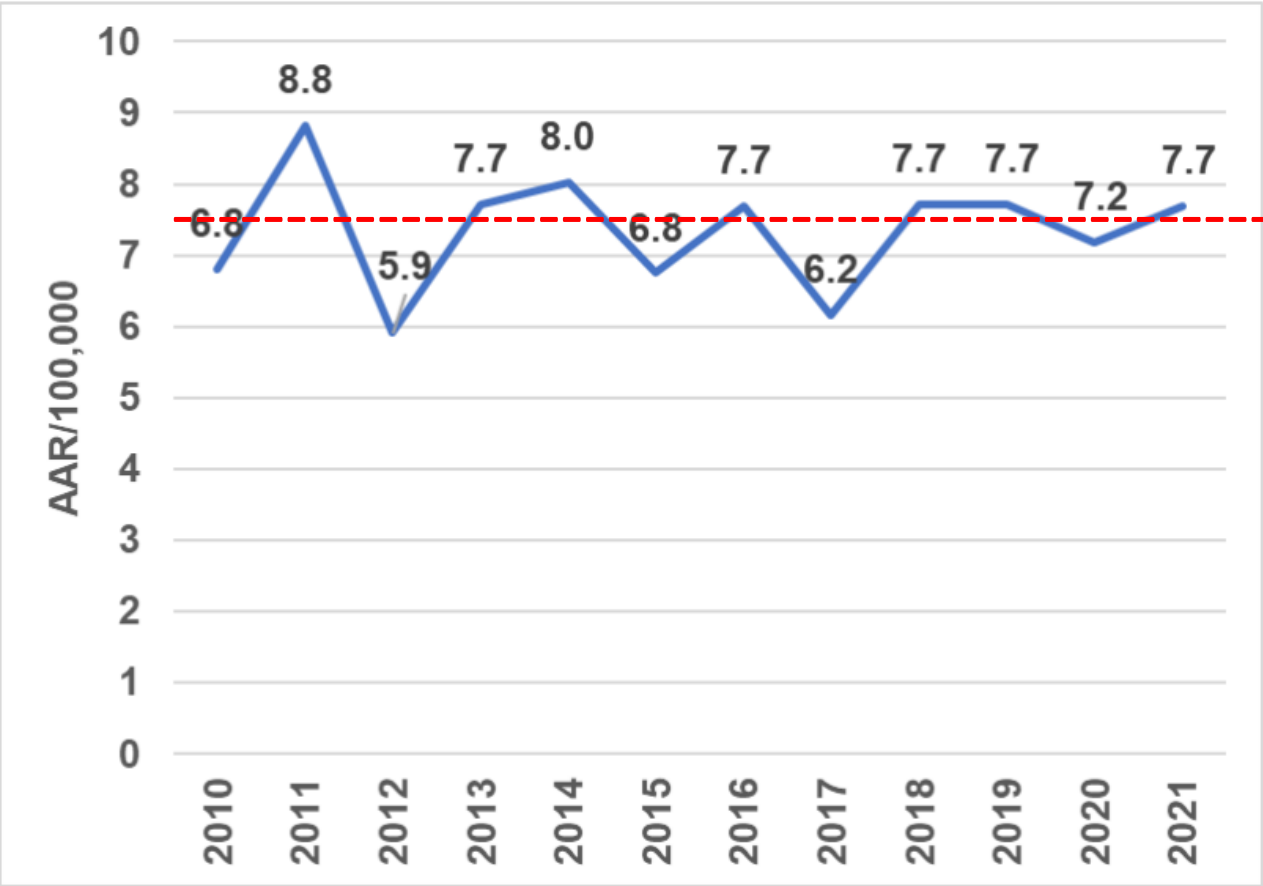
986.0

MD SHIP 2017

2986.7

Behavioral Health

Suicide Mortality Age-Adjusted Rate, Montgomery County, 2010-2021

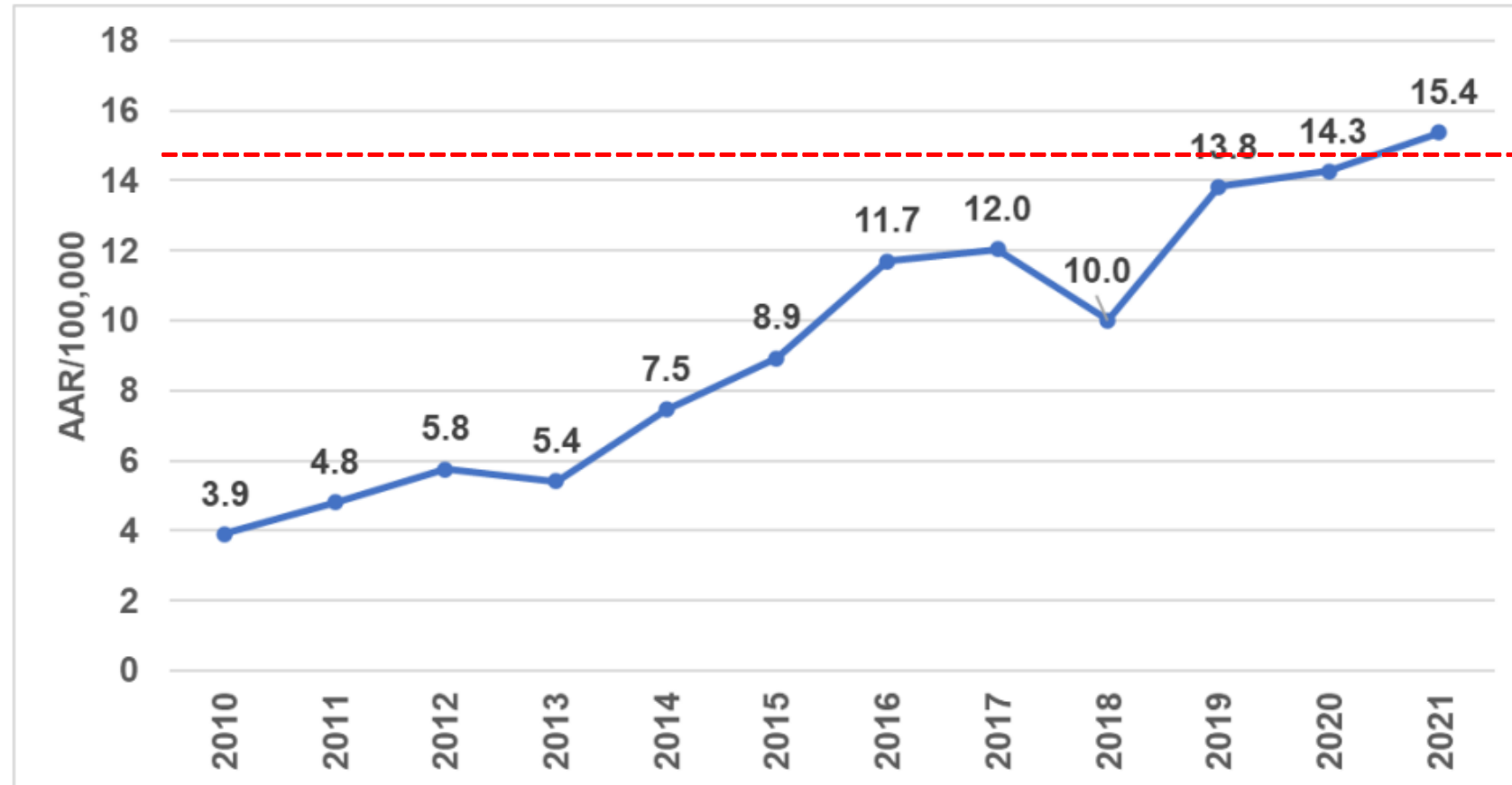


HM 2030 Goal
7.5

HP 2030	MD SHIP 2017
12.8	9.0

Behavioral Health

Drug Induced Mortality Age-Adjusted Rate, Montgomery County, 2010-2021

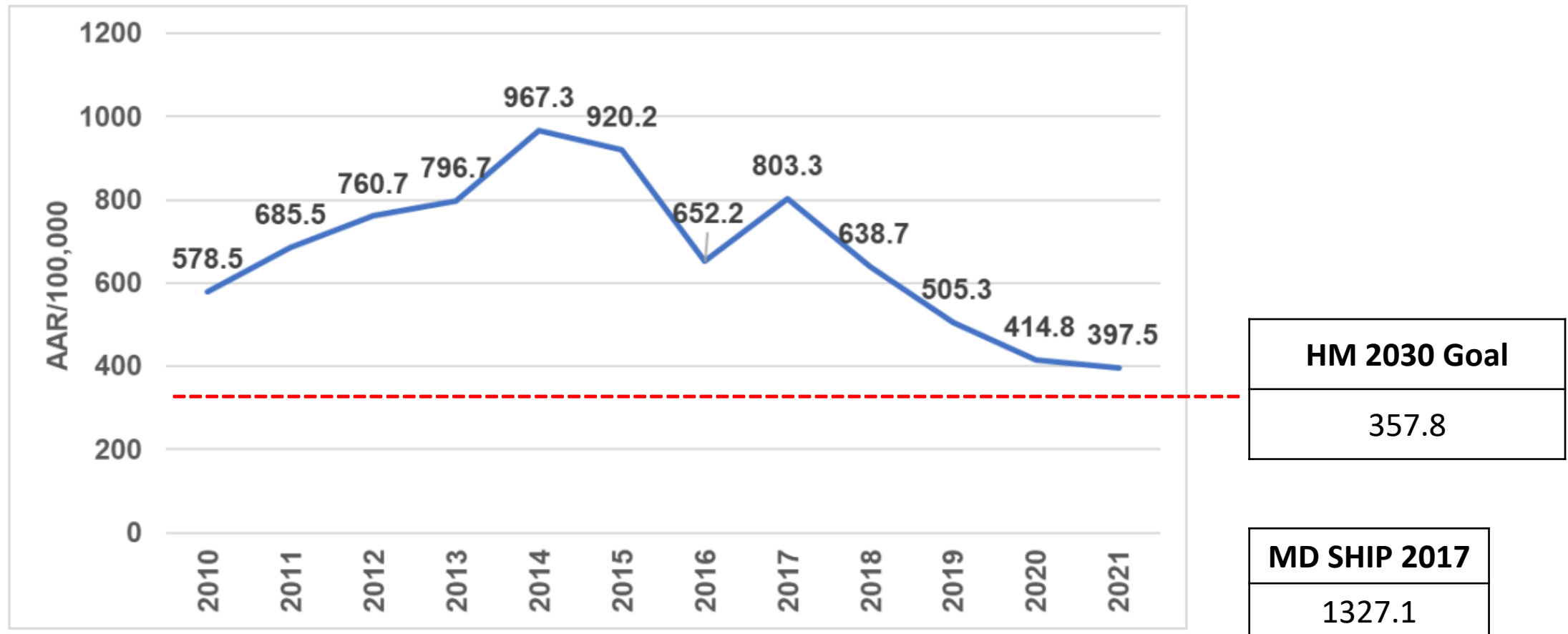


HM 2030 Goal
15.0

MD SHIP 2017
12.6

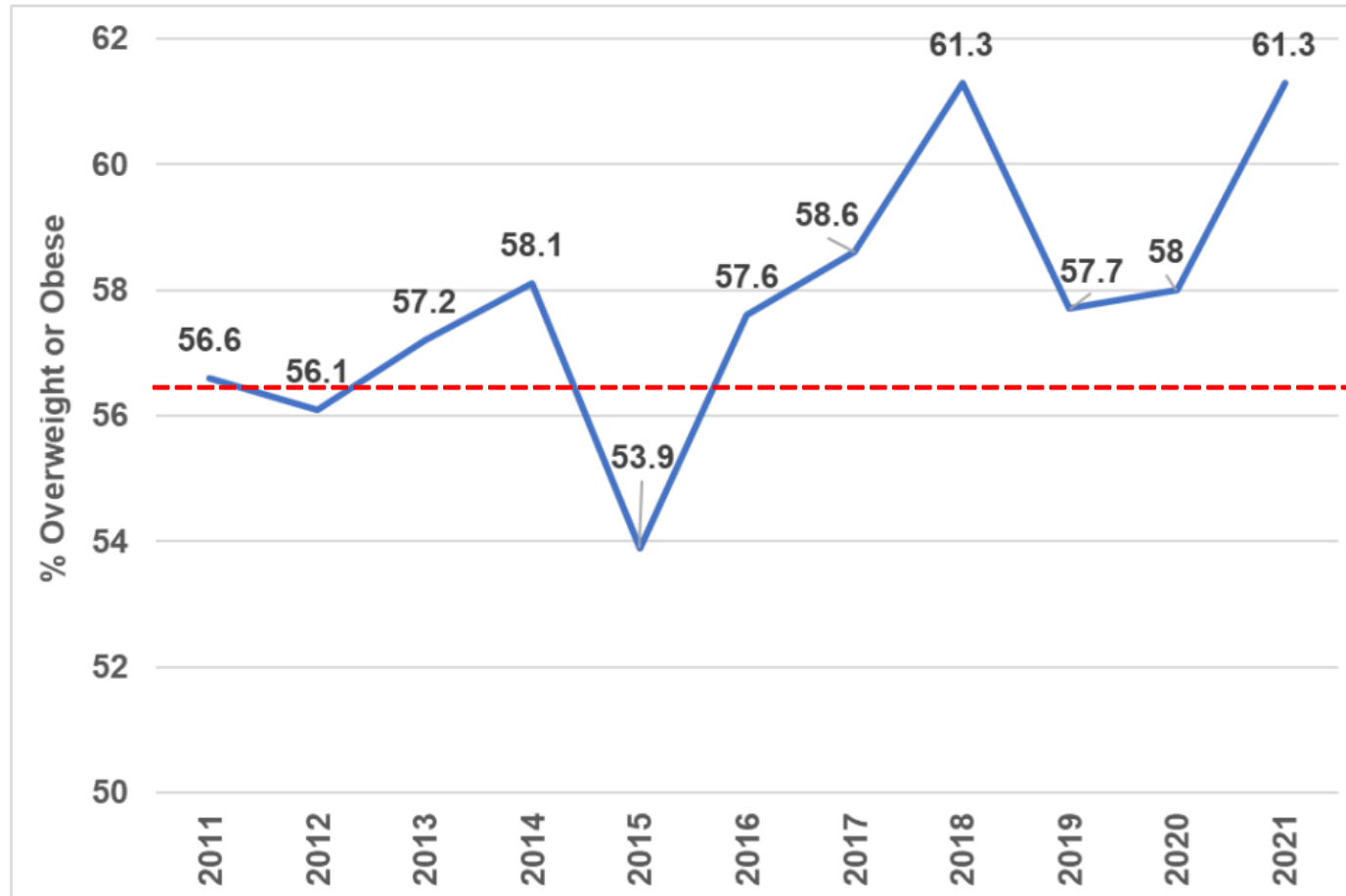
Behavioral Health

Substance Use Disorder ER Visit Age-Adjusted Rate, Montgomery County, 2010-2021



Chronic Disease: Obesity

Percent of Adults Overweight or Obese, Montgomery County, 2011-2021



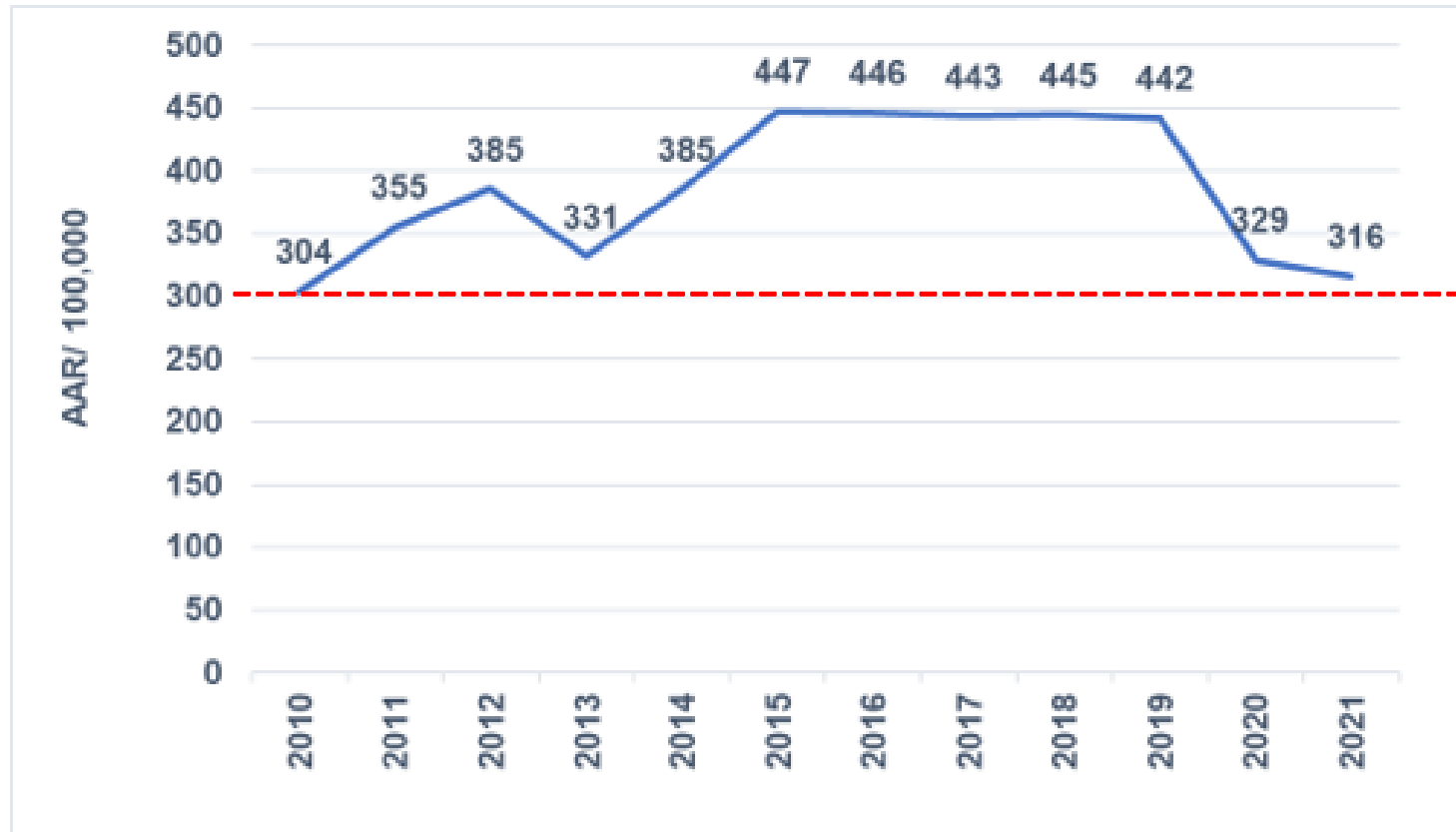
HM 2030 Goal
56.4%

HP 2030	MD SHIP 2017
36.0%	65.4%

*HP2030 has data for adults who are obese only

Chronic Disease: Diabetes

Diabetes ER Visit Age-Adjusted Rate, Montgomery County 2010-2021



HM 2030 Goal

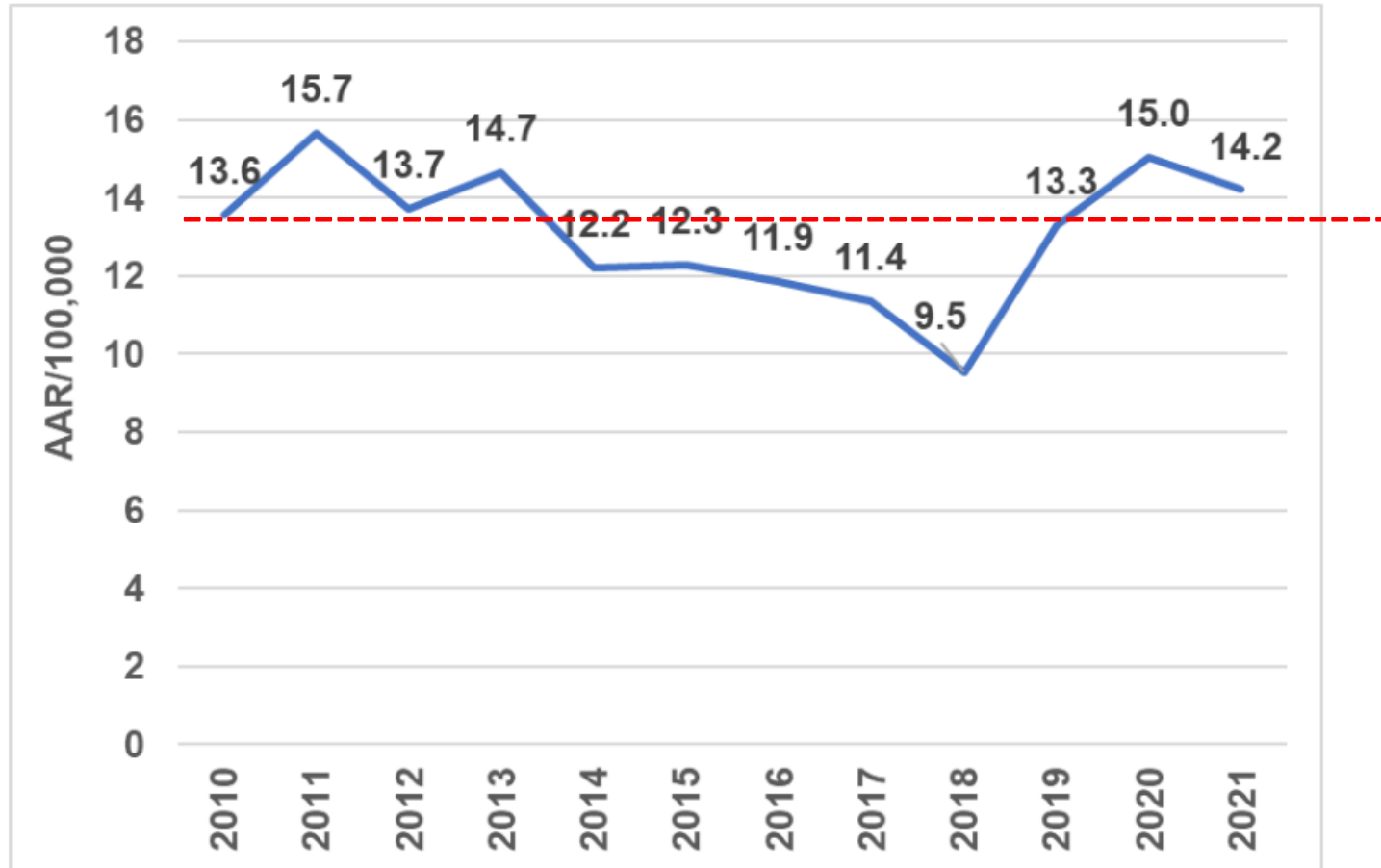
307.7

MD SHIP 2017

172.9

Chronic Disease: Diabetes

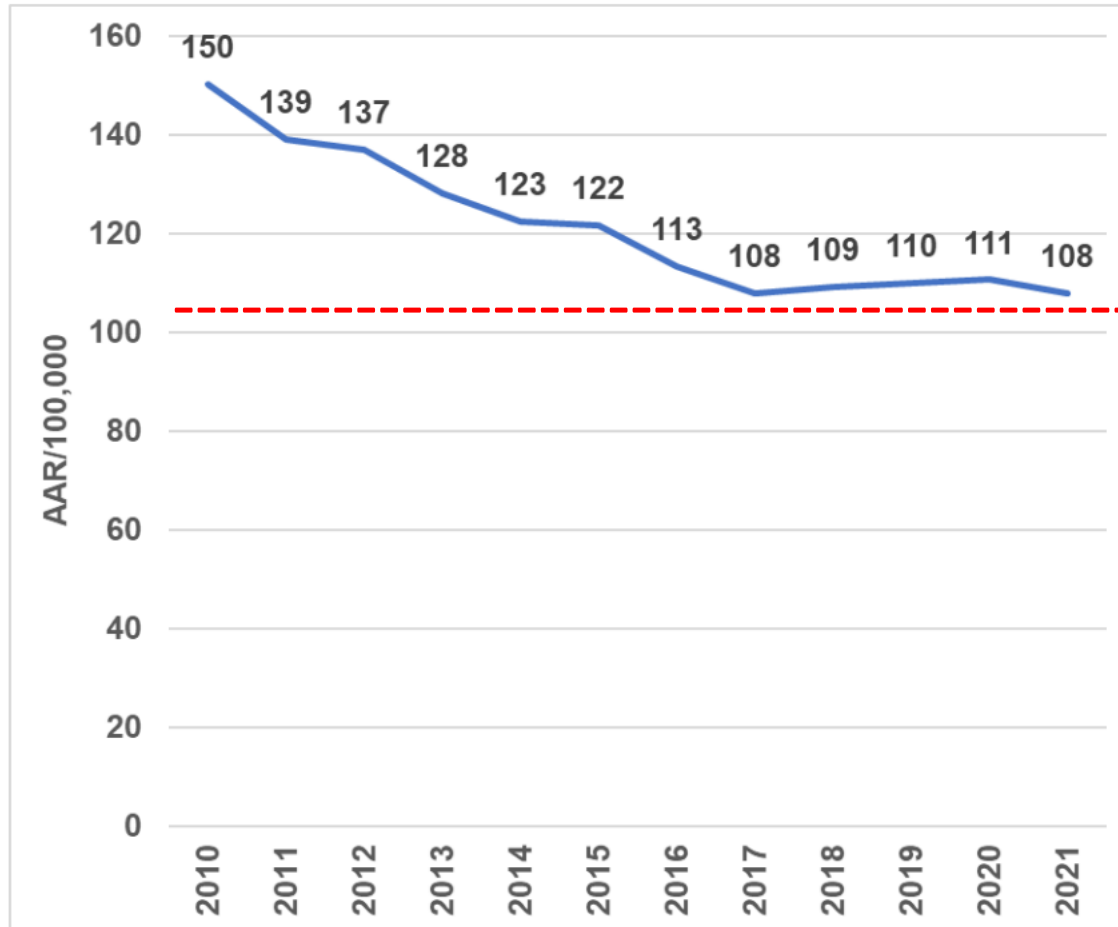
Diabetes Mortality Age-Adjusted Rate, Montgomery County, 2010-2021



HM 2030 Goal
13.8

Chronic Disease: Cardiovascular Health

Heart Disease Mortality Age-Adjusted Rate, Montgomery County, 2010-2021



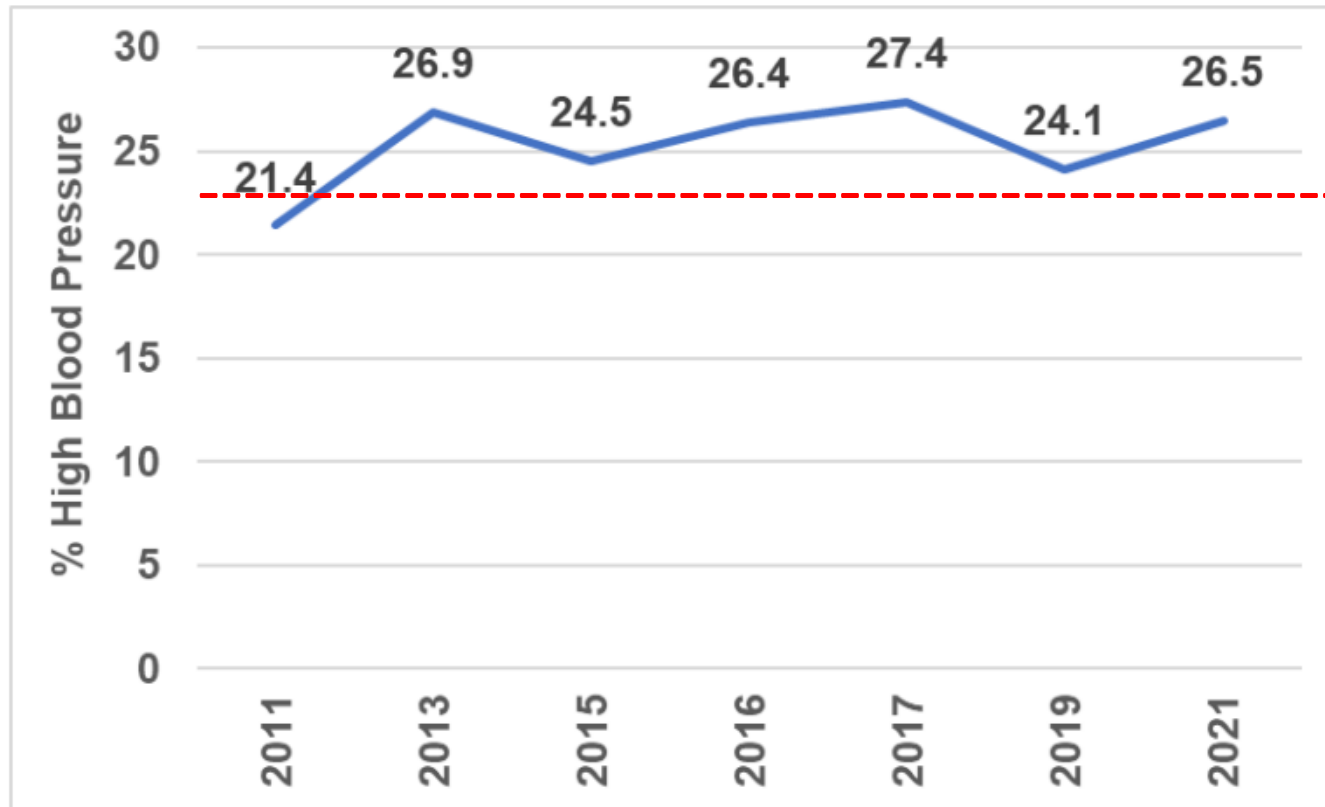
HM 2030 Goal
102.6

HP 2030	MD SHIP 2017
71.1	166.3

*HP 2030 has data for coronary heart disease only

Chronic Disease: Cardiovascular Health

Percent of Adults with High Blood Pressure, Montgomery County, 2011-2021



HM 2030 Goal

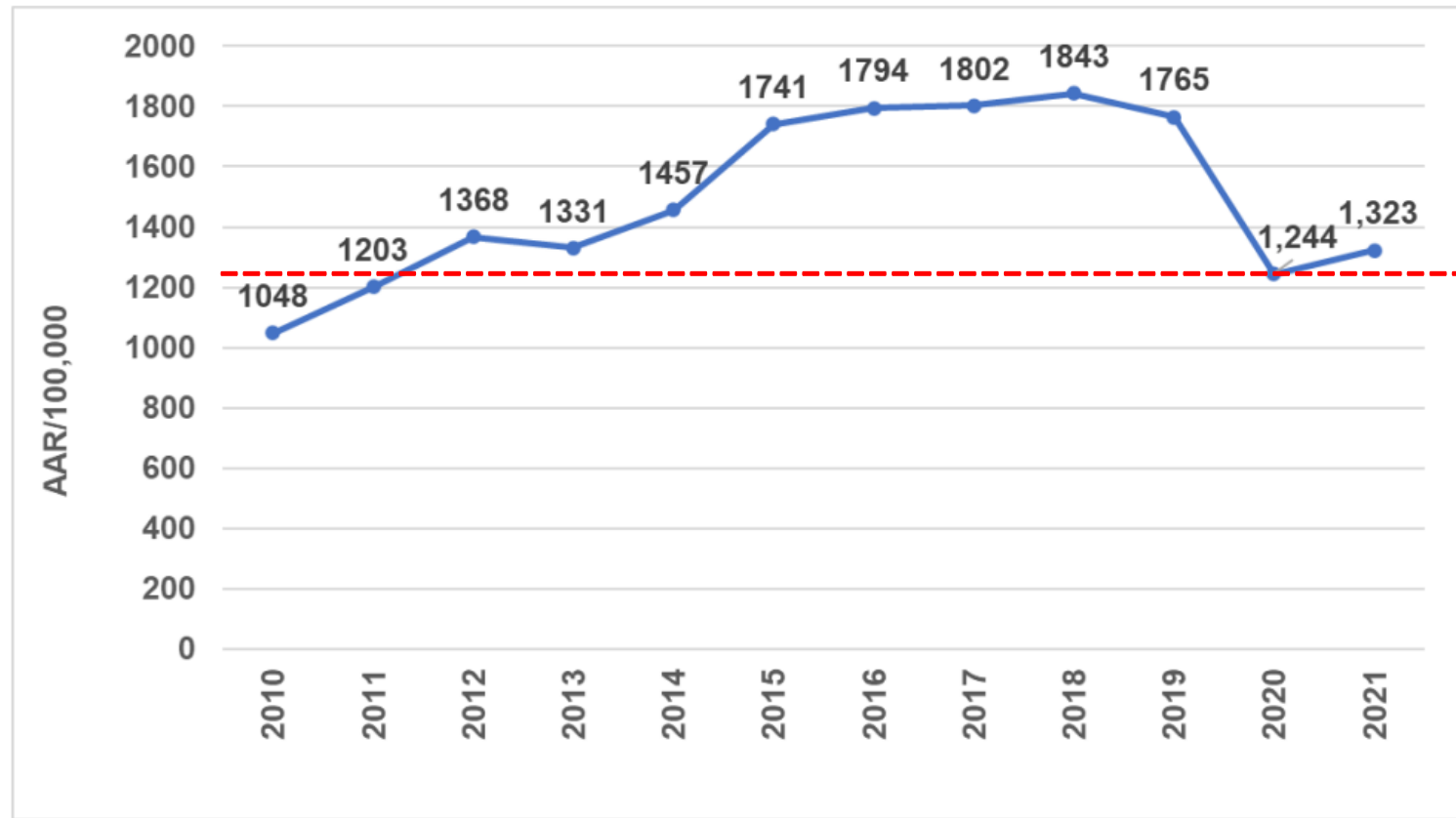
22.7%

HP 2030

41.9%

Chronic Disease: Cardiovascular Health

Heart Disease ER Visit Age-Adjusted Rate, Montgomery County, 2010-2021

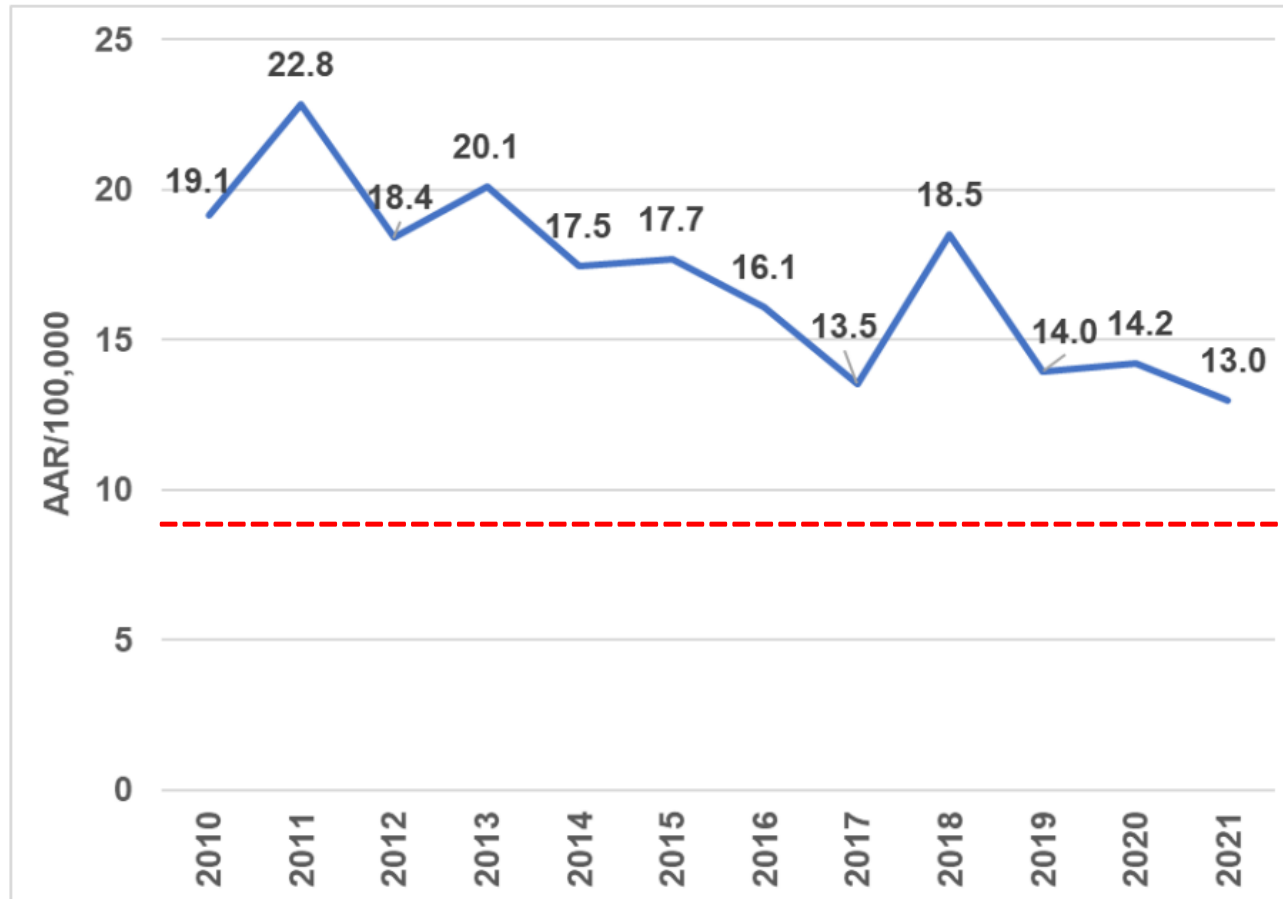


HM 2030 Goal

1289.9

Chronic Disease: Cardiovascular Health

Chronic Lower Respiratory Disease Mortality Age-Adjusted Rate, Montgomery County, 2010-2021

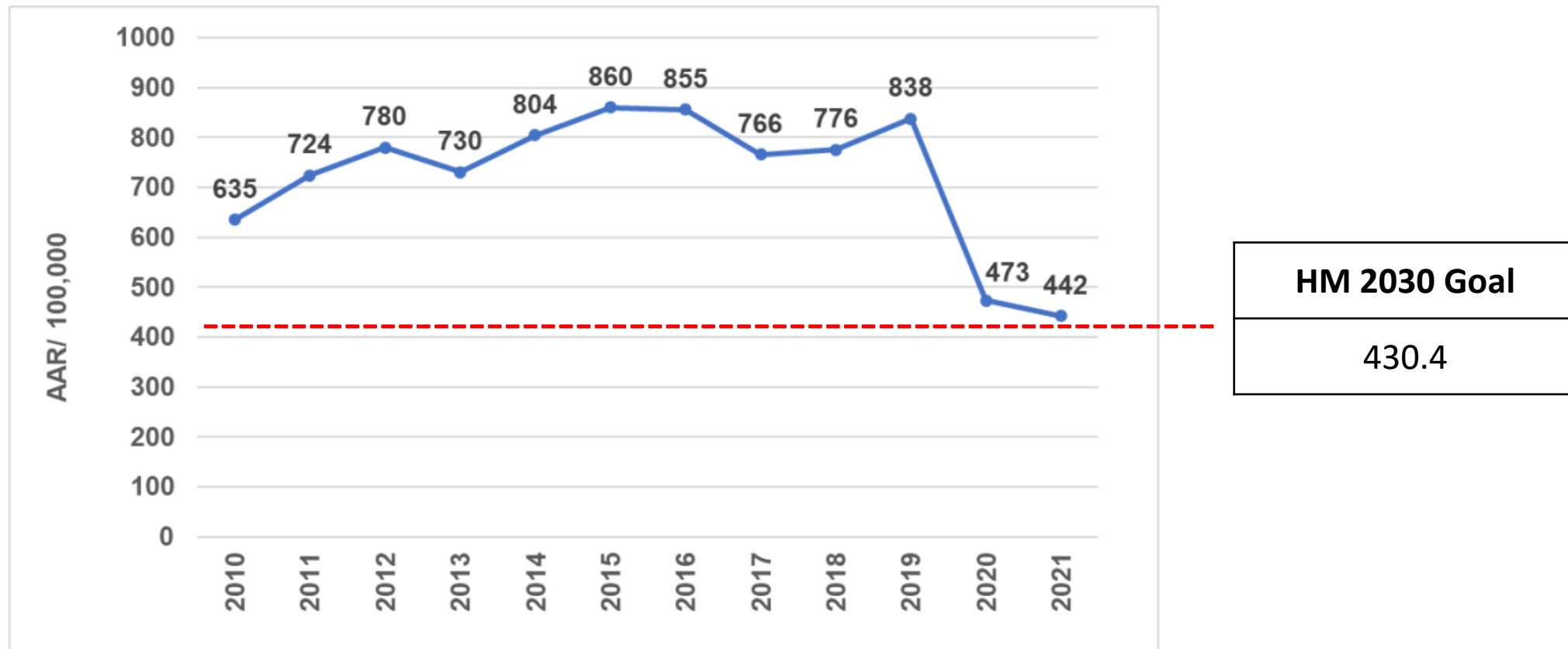


HM 2030 Goal

9.1

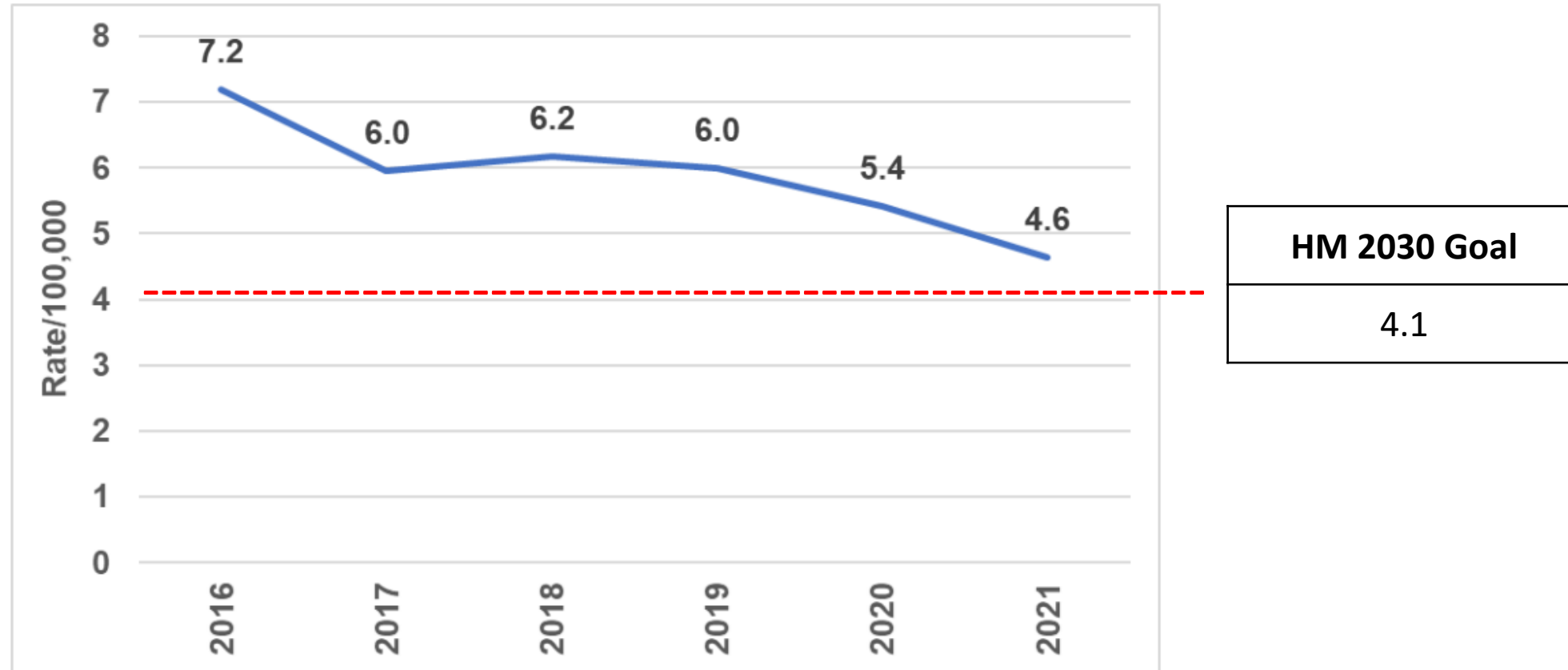
Chronic Disease: Cardiovascular Health

Chronic Lower Respiratory Disease ER Visit Age-Adjusted Rate, Montgomery County, 2010-2021



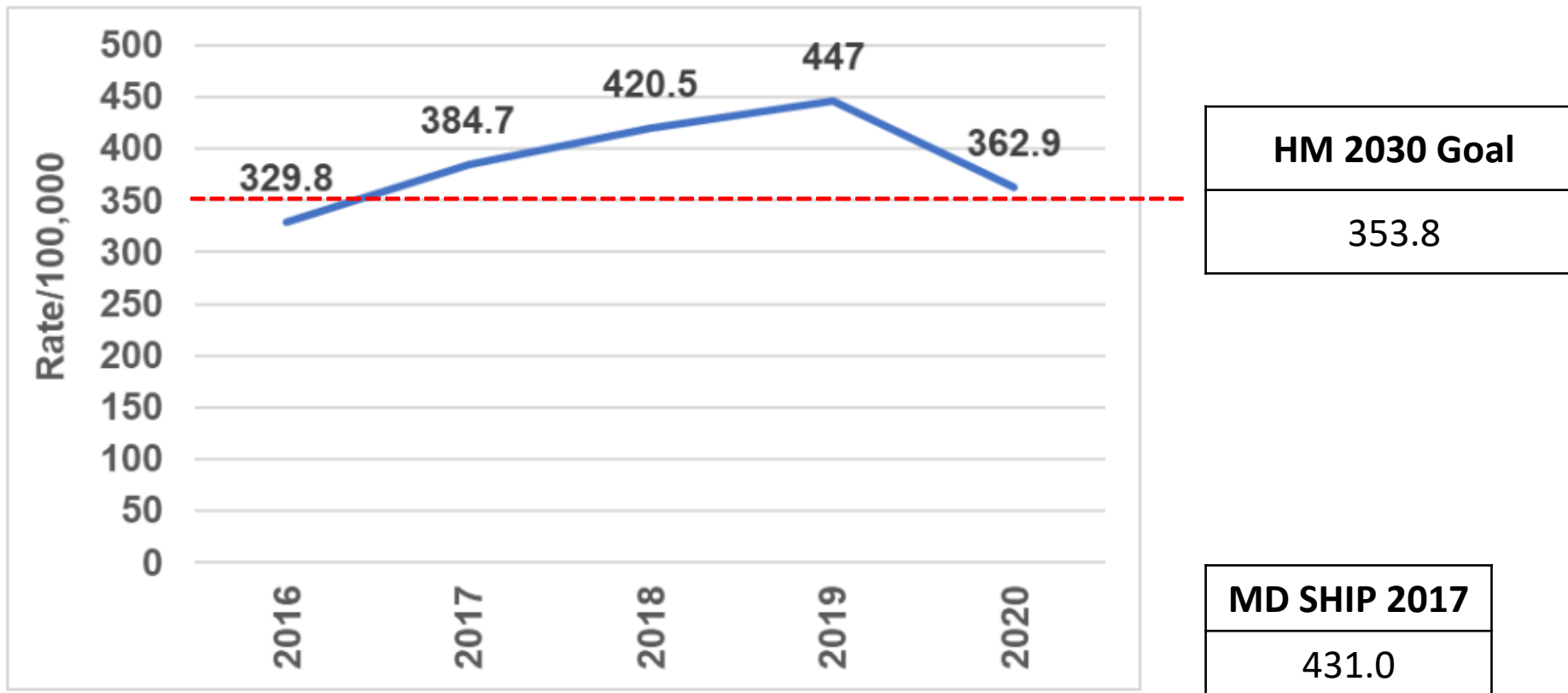
Infectious Disease

Tuberculosis Incidence Rate, Montgomery County, 2016-2021



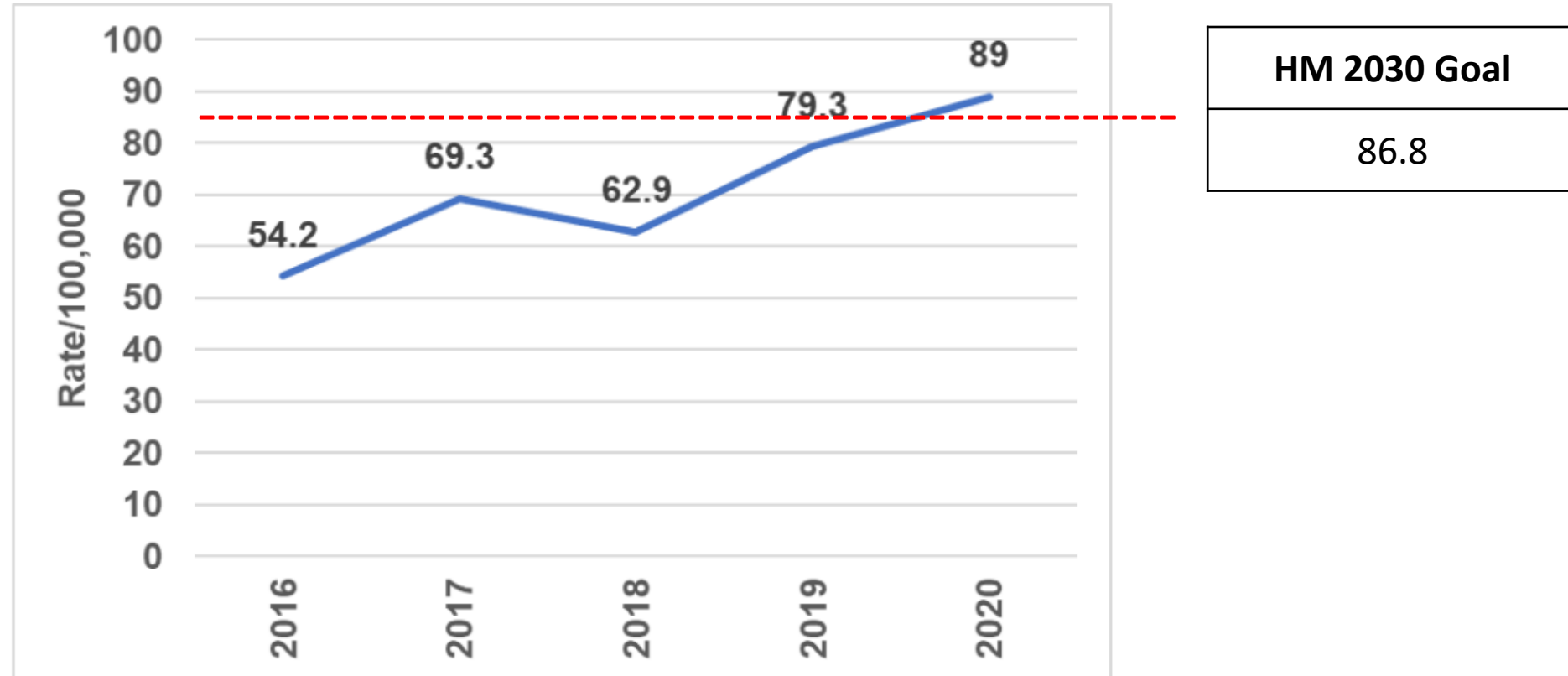
Infectious Disease

Chlamydia Incidence Rate, Montgomery County, 2016-2020*



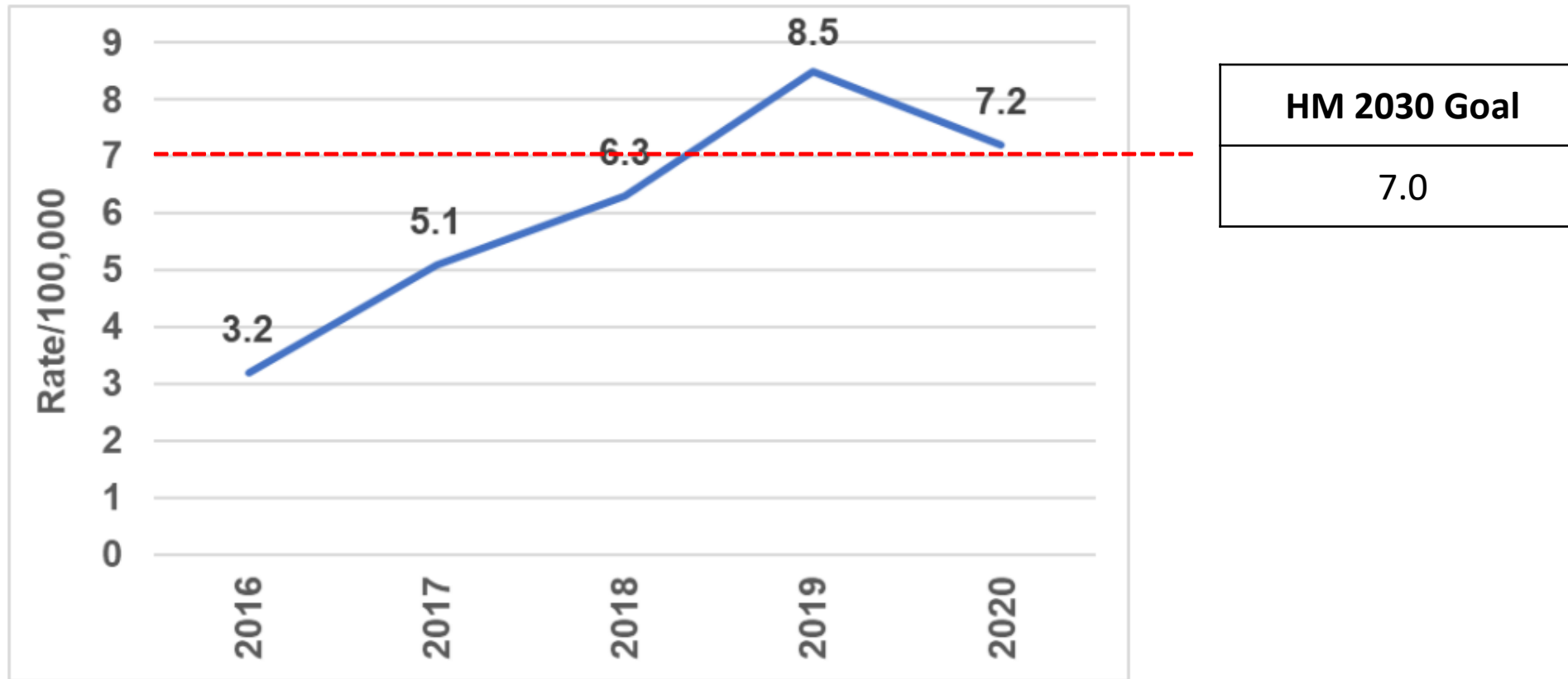
Infectious Disease

Gonorrhea Incidence Rate, Montgomery County, 2016-2020*



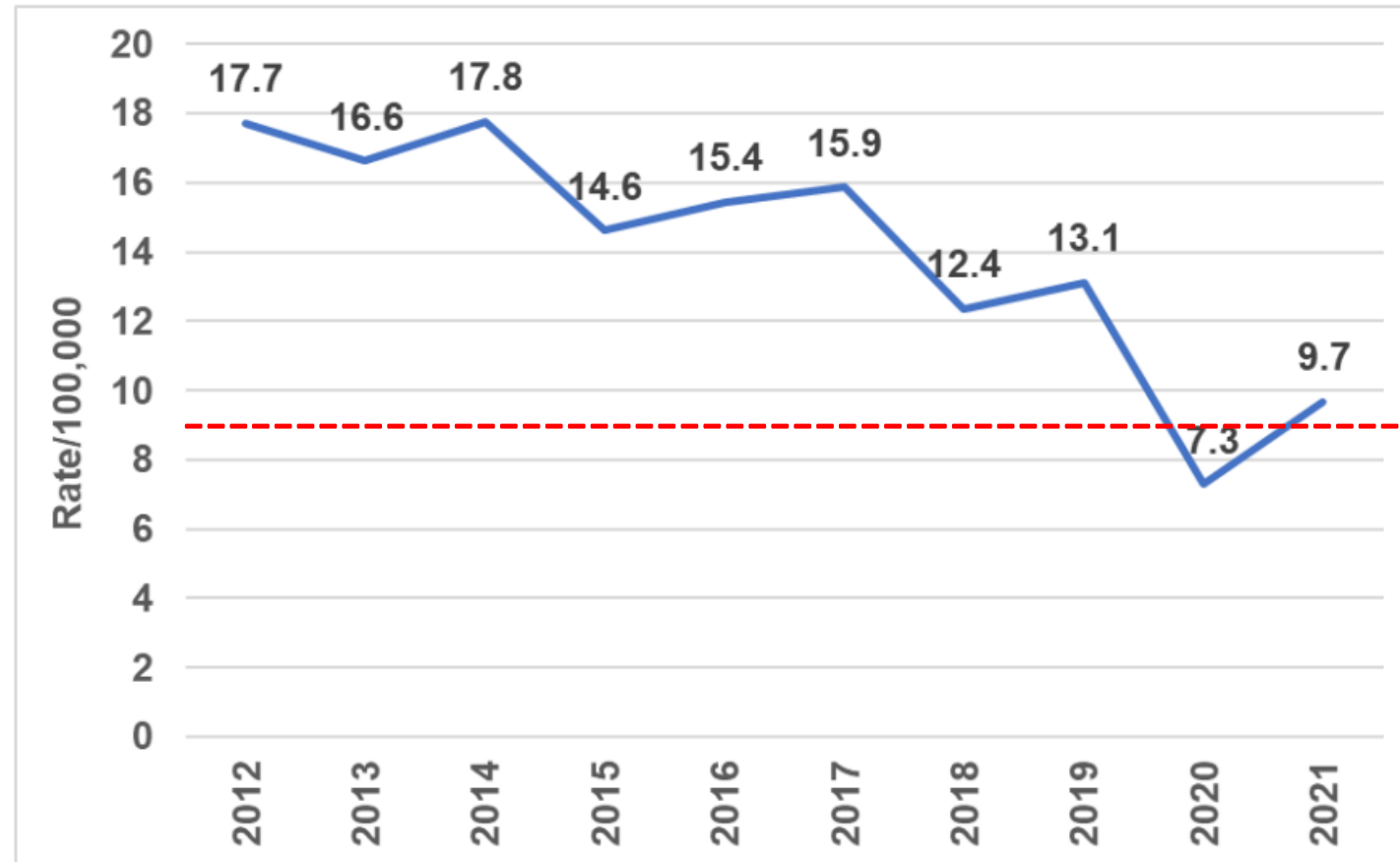
Infectious Disease

Syphilis Incidence Rate, Montgomery County, 2016-2020*



Infectious Disease

HIV Incidence Rate by Age, Montgomery County, 2012-2021

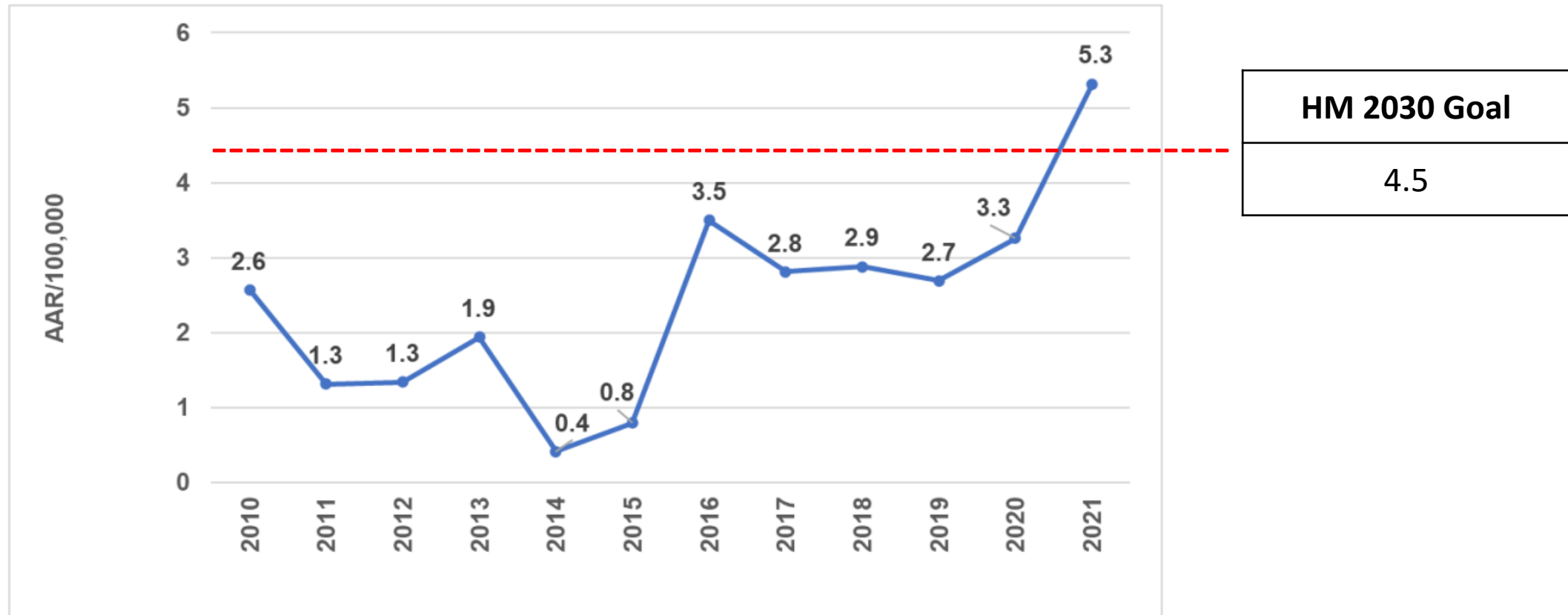


HM 2030 Goal
9.5

MD SHIP 2017
26.7

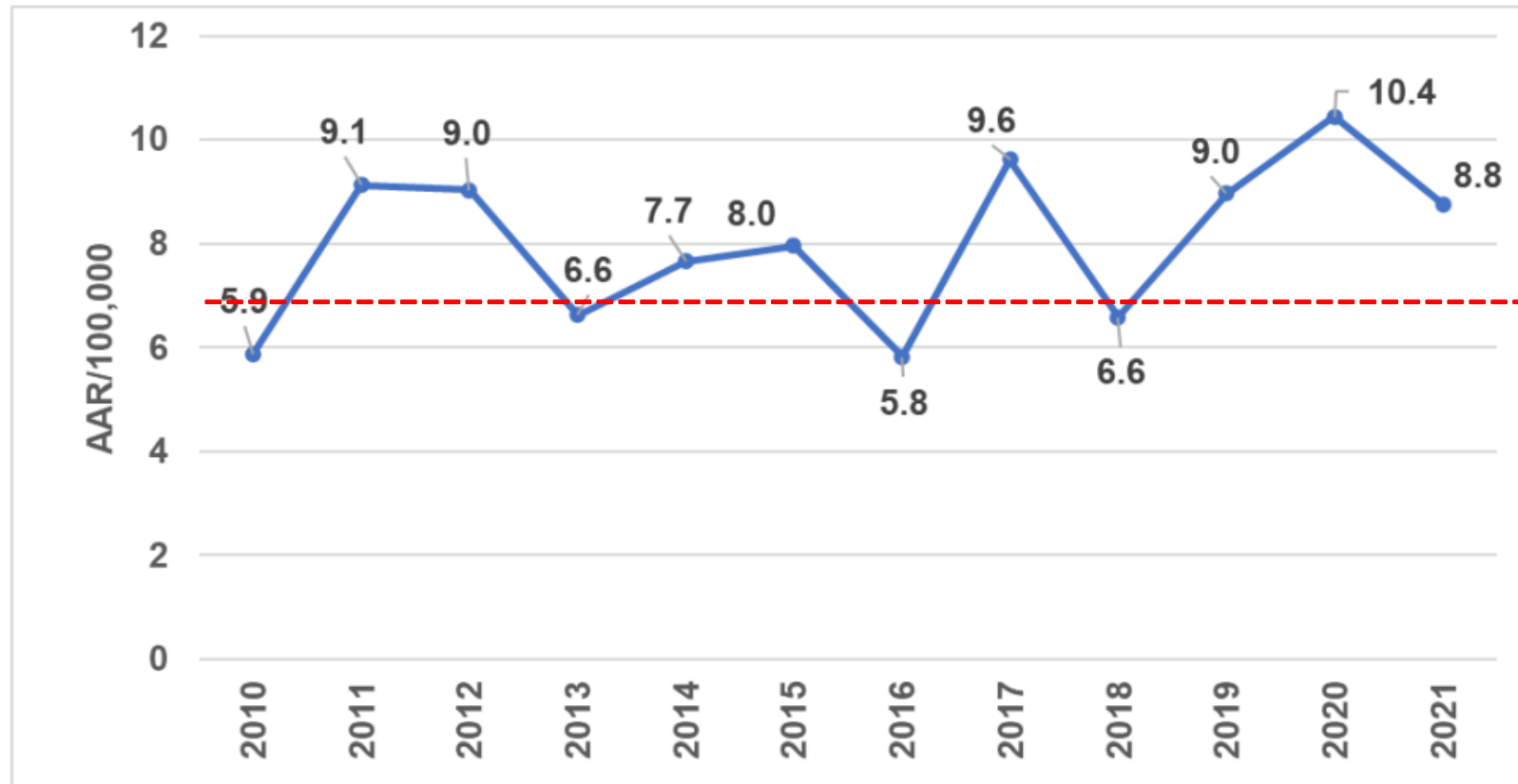
Injury

Firearm Hospitalization Age-Adjusted Rate, Montgomery County, 2010-2021



Injury

Fall Mortality Age-Adjusted Rate, Montgomery County, 2010-2021



HM 2030 Goal

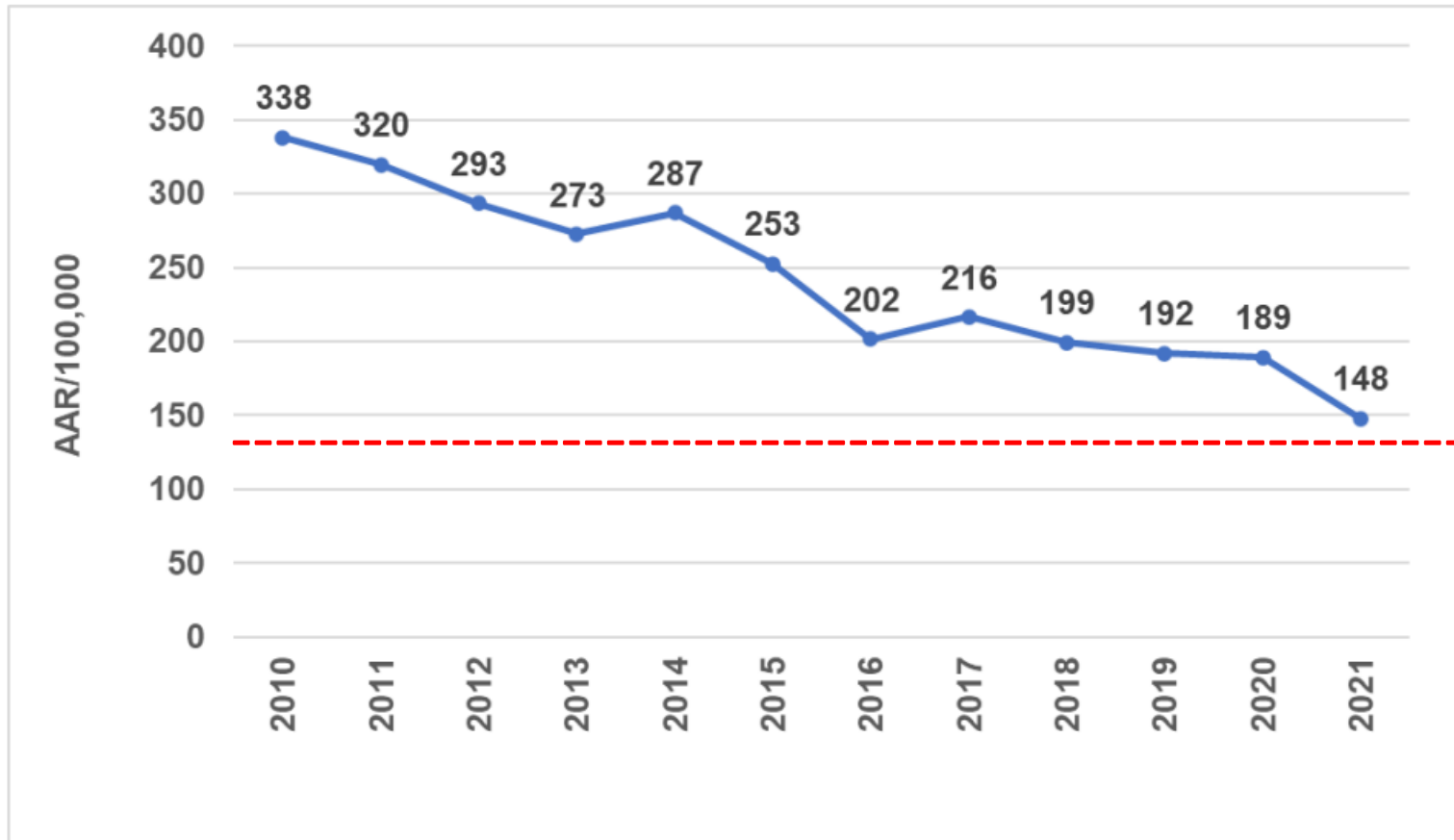
7.1

MD SHIP 2017

7.7

Injury

Fall Hospitalization Age-Adjusted Rate, Montgomery County, 2010-2021

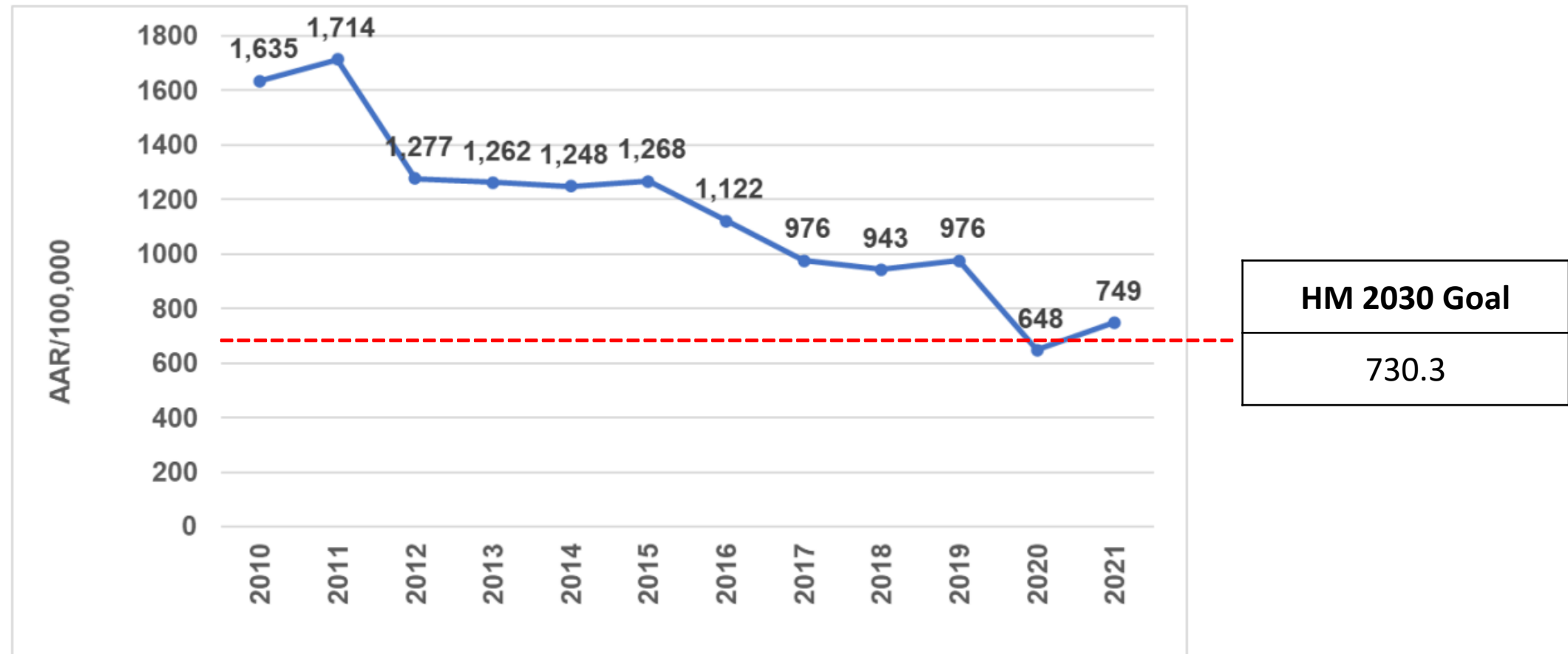


HM 2030 Goal

144.3

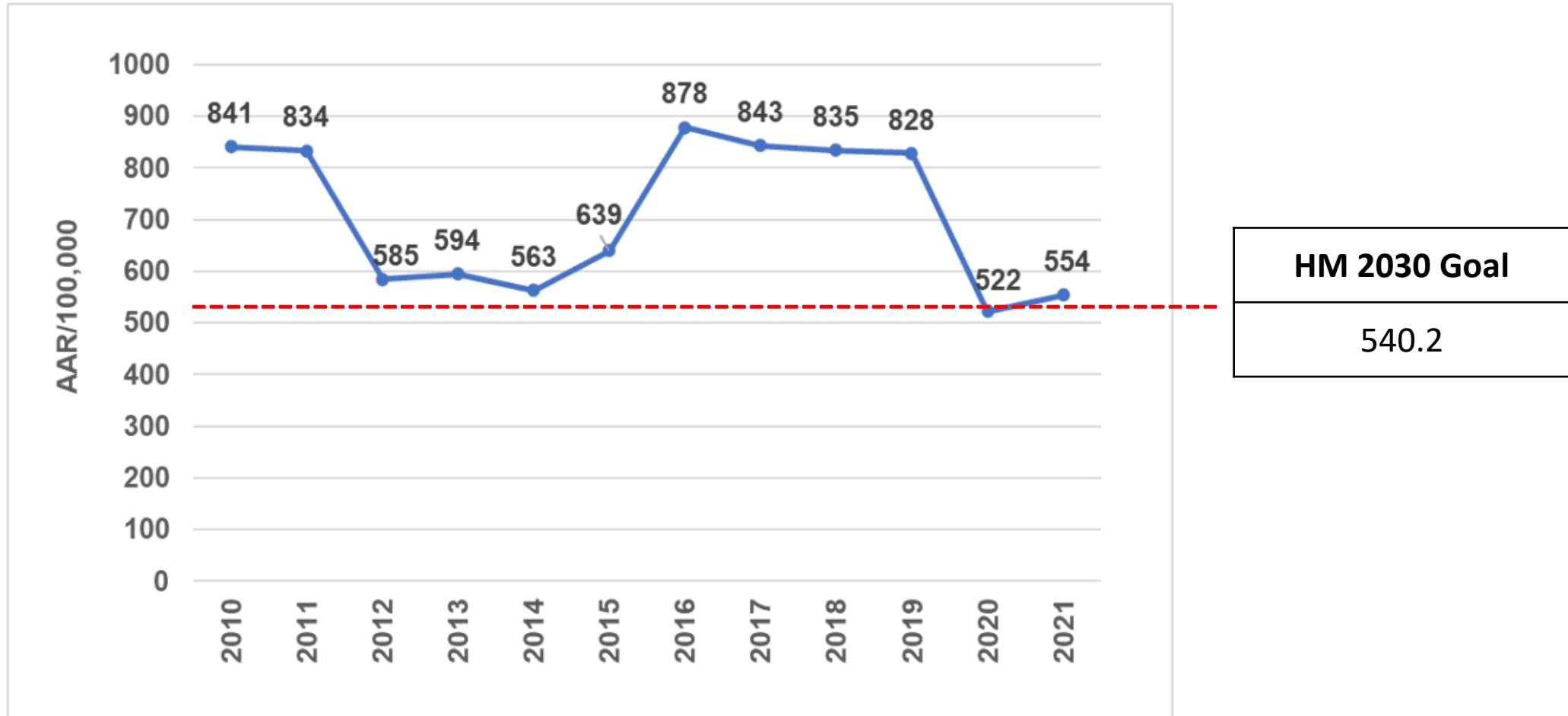
Injury

Fall ER Visit Age-Adjusted Rate, Montgomery County, 2010-2021



Injury

Motor Vehicle ER Visit Age-Adjusted Rate, Montgomery County, 2010-2021



Category	Measures/Indicators	HP2030 Goal	MD SHIP 2017 Goal	MD 2017	MoCo 2021	MoCo 2030 Goal
Maternal and Infant Health	Mothers who received "early and adequate prenatal care"	80.5 Percent	66.90%	92.5%	92.90%	95.2%
	Infant Mortality	5.0 infant deaths per 1,000	6.3/1,000	6.5	5.2	4.9
	Preterm Births	9.4 percent	-	10.5%	9.4%	8.80%
Behavioral health	ER Visits for Mental Health	-	2986.7/100,000	2586.1	1011.3	986
	Suicide (mortality)	12.8 suicides per 100,000	9.0/100,000	9.9	7.7	7.5
	Drug-Induced Mortality	-	12.6/100,000	24.1(2014-16)	15.4	15.0
	Substance abuse ER	-	1327.1	687.94	397.5	357.8
Chronic Disease	Obesity:					
	Adults who are overweight or obese	36.0 percent	63.40%	65.0% (2015)	61.30%	56.4%
	Diabetes:					
	ER visits for diabetes	-	172.9/100,000	797.97	315.6	307.7
	Diabetes Mellitus Mortality	-	-	19.6	14.2	13.8
	Cardiovascular health:					
	Heart disease mortality	71.1 deaths per 100,000	166.3/100,000	164.6	108.0	102.6
	High blood pressure prevalence	41.9 percent	-	32.4%	27%	22.7%
	Heart disease ER Visit	-	-	3007.35	1323.0	1289.9
	Chronic Lower Respiratory Disease Mortality	107.2 deaths per 100,000	-	30.5	13.0	9.1
	Chronic Lower Respiratory Disease ER Visit	64.0 visits per 10,000	-	1906.3	442	430.4
Infectious Disease	TB	1.4 new case per 100,000	-	3.4 (2018and17)	4.6	4.1
	Incidence of Chlamydia	-	431.0/100,000	552.1	362.9 (2020)	353.8
	Incidence of Gonorrhea	471.2 cases per 100,000	-	181.4	89 (2020)	86.8
	Incidence of Syphilis	4.6 cases per 100,000	-	9.5	7.2 (2020)	7
	Incidence of HIV rate	3,835 newly diagnosed	26.7/100,000	17.2	9.7	9.5
Injury	Firearm Hospitalization	10.1 injuries per 100,000	-	11.6	5.3	4.5
	Fall Mortality	63.4 deaths per 100,000	7.7/100,000	x	8.8	7.1
	Fall Hospitalization	-	-	354.37	148	144.3
	Fall ER	5,447 visits per 100,000	-	2101.24	749	730.3
	Motor Vehicle ER	-	-	1317.85	554	540.2

		2030 Goals by Gender			
Category	Measures/Indicators	Overall		Females	Males
Maternal and Infant Health	Mothers who received early prenatal care	95.2%		-	-
	Infant Mortality	4.9		-	-
	Preterm Births	8.8%		-	-
Behavioral Health	ER Visits for Mental Health	986.0		1107.8	850.1
	Suicide (mortality)	7.5		3.7	11.6
	Drug-Induced Mortality	15.0		8.7	21.7
	Substance abuse ER	357.8		281.2	444.5
Chronic Disease	Diabetes:				
	ER visits for diabetes	307.7		300.8	317.0
	Diabetes Mellitus Mortality	13.8		11.0	17.1
	Cardiovascular health:				
	Heart disease mortality	102.6		88.4	118.6
	Heart disease ER Visit	1289.9		1247.3	1327.7
	Chronic Lower Respiratory Disease Mortality	9.1		11.8	11.5
	Chronic Lower Respiratory Disease ER Visit	430.4		450.9	331.6
Infectious Disease	TB	4.1		3.5	5.0
	Incidence of Chlamydia	353.8		447.6	251.8
	Incidence of Gonorrhea	86.8		51.7	124.0
	Incidence of Syphilis (primary and secondary)	7		1.6	12.9
	Incidence of HIV rate	9.5		6.3	11.3
Injury	Firearm Hospitalization	4.5		1.4	7.0
	Fall Mortality	7.1		7.4	8.4
	Fall Hospitalization	144.3		150.0	135.1
	Fall ER	730.3		719.3	592.2
	Motor Vehicle ER	540.2		542.9	528.9

		2030 Goals by Race/Ethnicity					
Category	Measures/Indicators	Overall		NH-White	NH-Black	Hispanic	Asian
Maternal and Infant Health	Mothers who received early prenatal care	95.2%		98.0%	93.3%	92.2%	97.6%
	Infant Mortality	4.9		2.2	11.1	3.8	-
	Preterm Births	8.8%		6.0%	9.8%	9.6%	7.2%
Behavioral Health	ER Visits for Mental Health	986.0		751.2	990.6	572.2	242.6
	Suicide (mortality)	7.5		12.5	3.3	3.2	3.5
	Drug-Induced Mortality	15.0		20.5	21.3	8.1	3.4
	Substance abuse ER	357.8		287.1	685.8	274.6	68.9
Chronic Disease	Diabetes:						
	ER visits for diabetes	307.7		165.3	638.3	450.4	110.5
	Diabetes Mellitus Mortality	13.8		11.7	23.5	9.3	16.1
	Cardiovascular health:						
	Heart disease mortality	102.6		113.9	135.2	58.9	58.5
	Heart disease ER Visit	1289.9		1032.0	2264.6	1214.3	579.7
	Chronic Lower Respiratory Disease Mortality	9.1		16.0	6.2	5.8	5.4
	Chronic Lower Respiratory Disease ER Visit	430.4		279.2	711.3	413.3	87.9
Infectious Disease	TB	4.1		1.2	7.0	3.4	9.9
	Incidence of Chlamydia	353.8		84.5	461.8	357.2	61.1
	Incidence of Gonorrhea	86.8		23.8	188.7	59.3	14.2
	Incidence of Syphilis (primary and secondary)	7		3.0	12.3	13.0	1.1
	Incidence of HIV rate	9.5		2.1	24.6	12.5	2.2
Injury	Firearm Hospitalization	4.5		0.1	13.0	2.3	-
	Fall Mortality	7.1		11.1	1.9	6.6	2.4
	Fall Hopitalization	144.3		177.6	96.9	90.5	60.5
	Fall ER	730.3		776.7	607.3	606.2	231.7
	Motor Vehicle ER	540.2		294.3	830.4	779.6	208.3