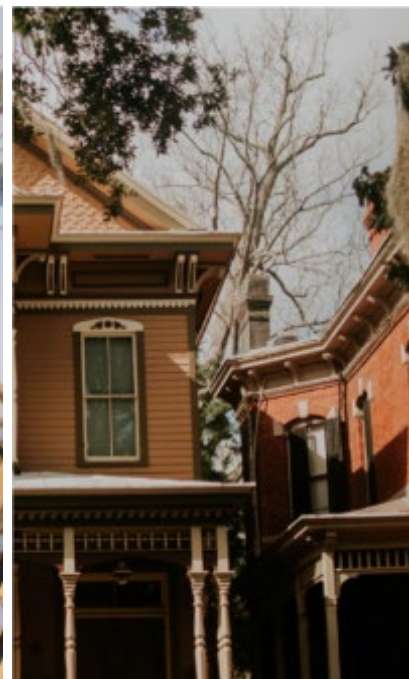




SIGN UP TODAY AND RECEIVE A BONUS PAYMENT

Montgomery County's Services to End and Prevent Homelessness (SEPH) invites landlords to participate in our Landlord Risk Mitigation Fund. SEPH will offer a one-time sign-on bonus of **\$500** to new landlords and **\$250** for a referred landlord who is willing to become a part of our housing network and sign up for our Landlord Risk Mitigation Fund program.



TO LEARN MORE PLEASE CONTACT
LRMF@MONTGOMERYCOUNTYMD.GOV

REVISED 2.2024