



# Montgomery County Interagency Commission on Homelessness

SEPTEMBER 23, 2025

FULL COMMISSION MEETING: VIRTUAL

# AGENDA

## WELCOME AND INTRODUCTIONS

Approval of July 22, 2025, Minutes \*\*VOTE

Update on HUD's Build and COC Renewals NOFOs

CoC Data and Funding at a Glance

Updated ICH Governance Charter \*\*VOTE

CoC Performance Goal Memo \*\* VOTE

Youth Coordinated Entry Framework \*\*VOTE

CES Evaluation Process- Progress update

Committee | Subcommittee | Workgroups Updates  
People's Committee  
Workforce Development Workgroup

Public Comments

Announcements

---

# Update on HUD's CoC NOFO

**HUD plans to release a new CoC NOFO that would change the structure of our system and possibly decrease funding by 70%.**

Section 166 from the Continuing Appropriations and Extensions and Other Matters Act, 2026 (S.2882/H.R. 5450), a short-term funding measure, was recently introduced by Rep. Rosa DeLauro, D-CT-03 (House Appropriations Committee – Ranking Member) and Sen. Patty Murray, D-WA (Senate Appropriations Committee – Vice Chair). The language in **Section 166 would require that HUD renew all existing Continuum of Care (CoC) grants** expiring during calendar year 2026 for **one** 12-month period.

**The ask:** Keep **Section 166** in the short-term CR to maintain critical housing resources.

## **Implication**

- A new CoC Program NOFO will result in significant funding delays.
- A 70% reduction would result in a \$17 million loss in rental assistance over three years.
- Impact 757 housed households.
- Impact 198 landlords
- Impact 509 households currently on the CES list

# CoC Data and Funding at a Glance

---

In FY2025, the Montgomery County CoC Served:

- 7,455 People in Outreach, Shelter and Housing
  - 365 in Street Outreach
  - 1,027 Services Only
  - 3,030 in Emergency Shelter
  - 2,802 in PSH and RRH

Annual Funding for the Montgomery\$95.8 County CoC:

- \$95.8 million for the entire CoC, including, County, State and Federal funds
  - \$22 million for Prevention/Housing Stabilization
  - \$23 million for Crisis Response (Diversion, Outreach, Shelter)
  - \$50.8 million for Housing (PSH, RRH, SHaRP)



## ICH Governance Charter- Updated

---

### What changed?

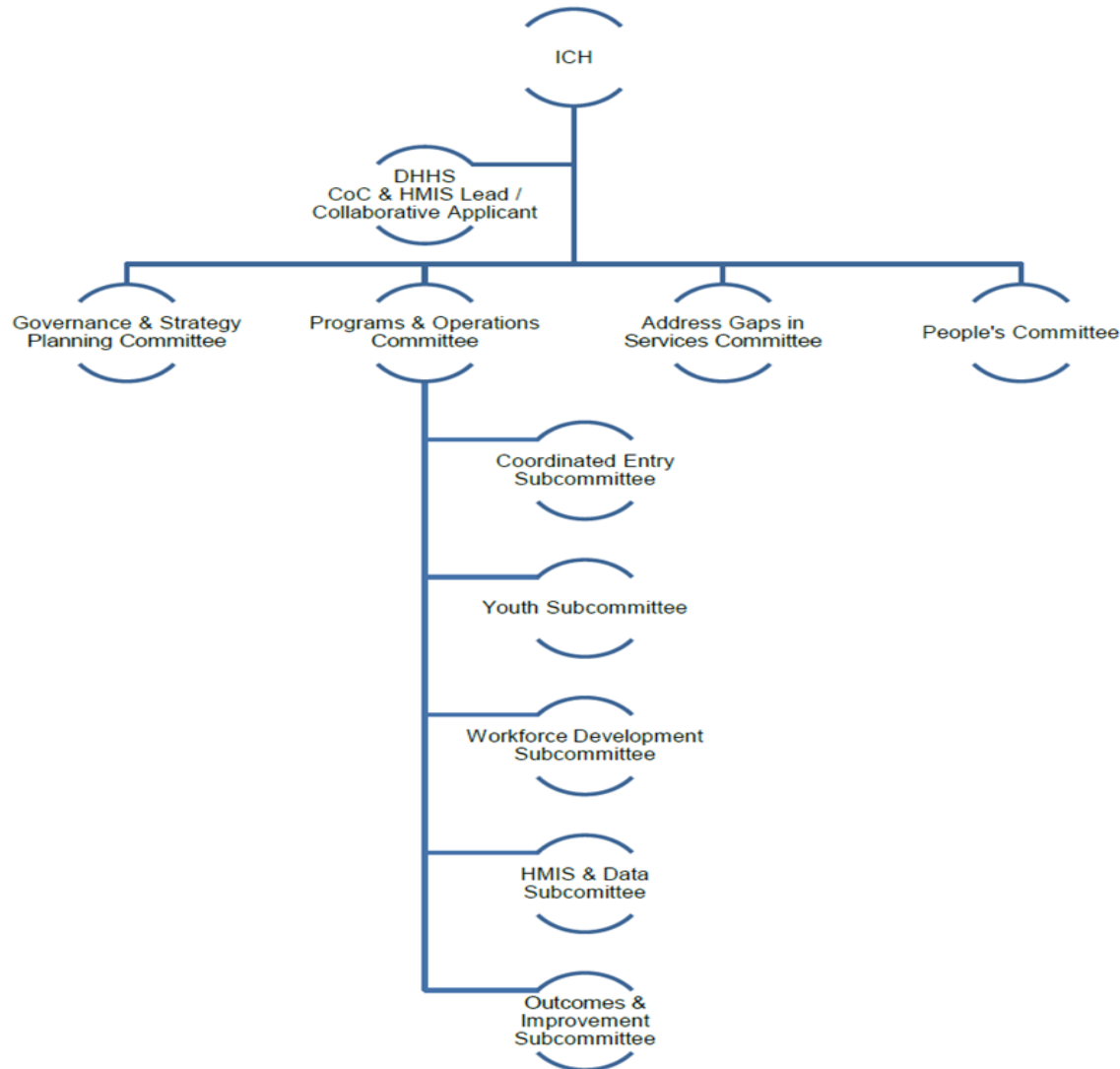
ICH Committee, subcommittee, and workgroup  
Structure

### Why?

To reflect the changes in the newly adopted CoC's  
Strategy Plan.

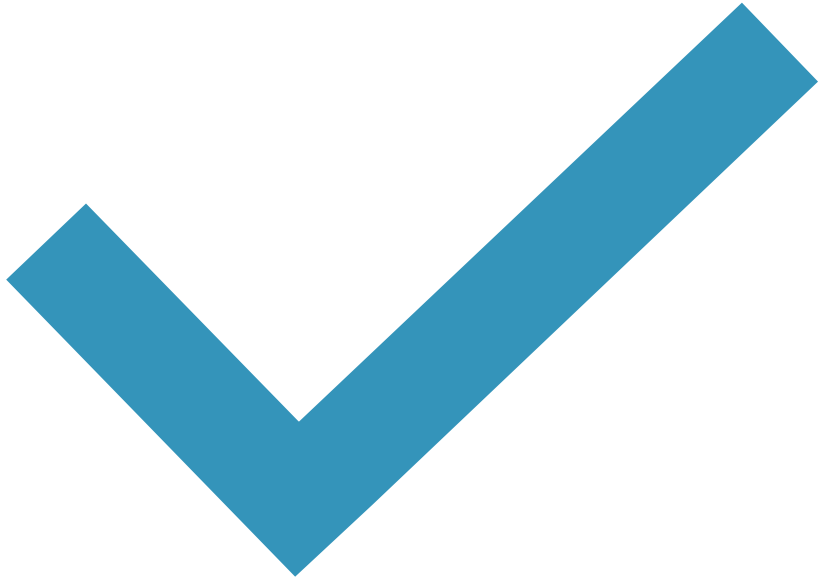
Six strategies are assigned through the four Core  
committees (and their subcommittees and related  
workgroups)

# ICH Committees At a Glance



ICH is at the top of this graphic, representing the primary Governing Body of the CoC.

- **The ICH** ensures that key discussions and decisions are made at the right place and time to advance ICH's work and fulfill local, state, and federal requirements.
- **The Lead Agency (DHHS)** staffs the CoC Governance Structure and provides administrative support, including managing the community's Homeless Management Information System (HMIS).
- **The Four Committees** play different roles and are charged with ensuring effective governance and addressing the six strategies of the CoC's strategic plan.
- **Subcommittees and workgroups** are created to support policy development for specific CoC functions, advancing the assigned strategy plan's action steps. Workgroups/Subcommittees focus on defined tasks or initiatives and should present recommendations to their respective committee and/or the ICH for approval and adoption.



VOTE

---

# System Performance Goals

---



# Outcomes and Improvement Committee (OIC)

## Committee Members

Deborah Taylor	Deborah Lambert
Charity Jones	Christine Hong
Cliff Mayo	Diana Bernhardt Pina
Gwendolyn Harter	Rozina Adhanom
Janice Wellington	Lindsey Kreuzer
Liz Krueger	Naqiya Ghulamali
Mary Phillips	Bezawit Baheru
Sarafina Asihene	Sarah Moore
Vicky M. Suero	
Dickson Kanneh	

## Agency

Bethesda Cares Agency
National Center for Children and Families
Montgomery County Coalition for the Homeless
Pathways to Housing DC Agency
Interfaith Works Agency
Housing Opportunities Commission
Services to End and Prevent Homelessness

# System Performance Measure

HUD FY : 10/1– 09/30

## Goal 1: Decrease the average length of homelessness

FY 24: 157 days

FY 25 To Date: 183 days

FY 26 Target: 174 days (-5%)

## Goal 2: Maintain the % of households that return to homelessness within two years

FY24: 14%

FY25 To Date: 16%

FY26 Target: 9% (-7%)

## Goal 3: Decrease the number of people experiencing homelessness on any given night (Point in Time)

**Sheltered:** FY 24: 991 individuals,

FY 25: 1351 individuals

FY 26 Target: 1283 individuals (-5%)

**Unsheltered:** FY 24: 153 individuals

FY 25: 159 individuals

FY 26 Target: 151 individuals (-5%)



**Goal 4: Increase the number of adults who increase their total cash income while in permanent housing**

FY 24: 34%

FY 25 To Date: 20%

FY 26 Target: 39% (5%)

**Goal 5: Decrease the number of first-time homeless**

FY 24: 1685

FY 25 To Date: 1021

FY 26 Target: 1685(-0%)

**Goal 6: Increase the number of households placed in permanent housing**

FY 24: 37%

FY 25 To Date: 33%

FY 26 Target: 39%

## Accomplishing these goals

Short- term  
Housing &  
Resolution  
Program (SHaRP)

Rental Assistance  
Program (RAP)

Supportive  
Services Only  
Programs

Diversion &  
Eviction Prevention

Partnerships with  
MVA and SSA

Move-up  
Opportunities



VOTE

# Youth CES Framework Recommendation

## Youth Workgroup CE Development (Started June 2023)

Defined youth homelessness

Refined access points

Revised and piloted assessments

Held monthly meetings focused on developing Youth CES

Conducted 6 in-person sessions with youth service providers, MCPS, County staff, and other stakeholders

Received coaching from Community Solutions

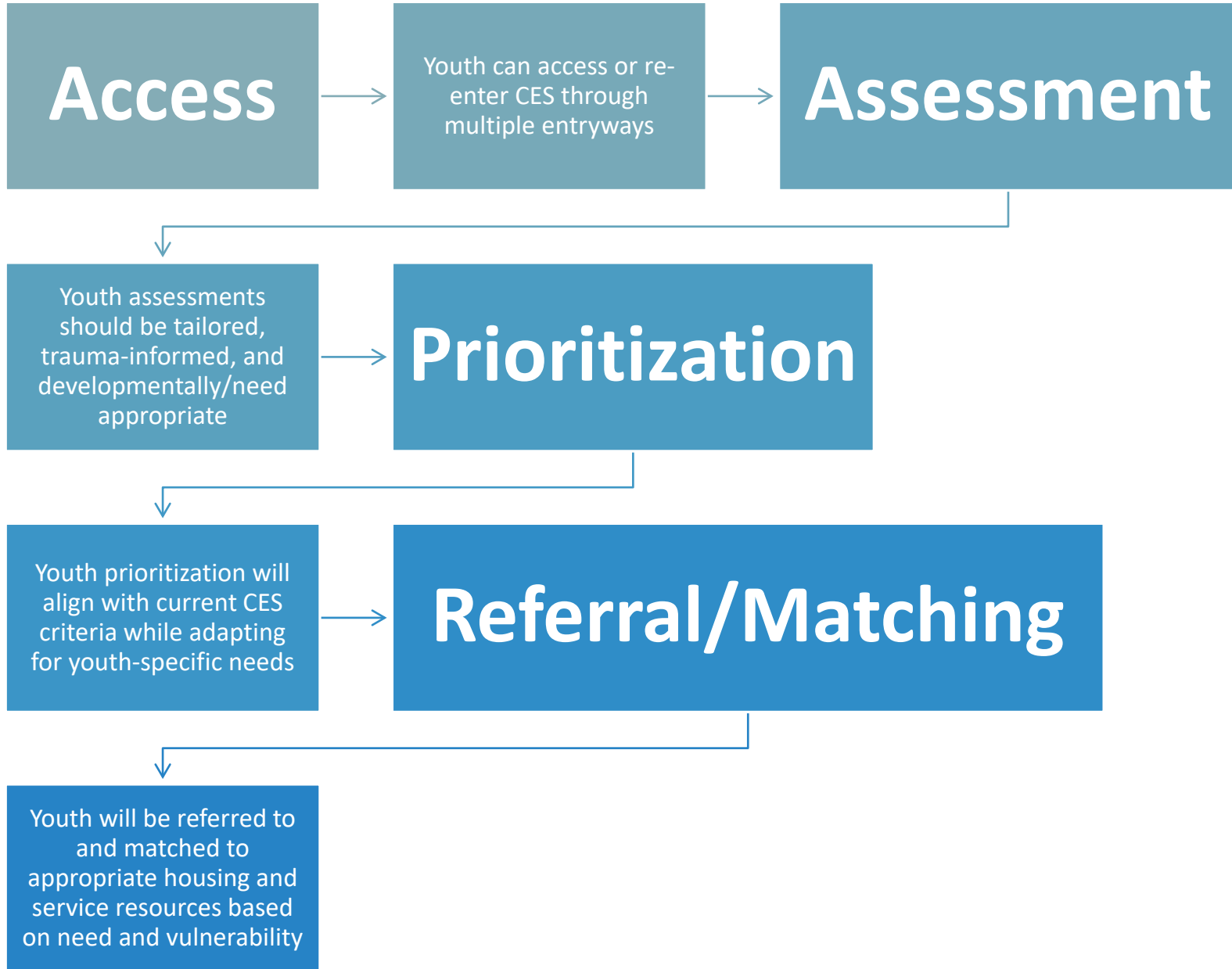
Engaged the Youth Advisory Board



## The Youth Workgroup Recommendation:

Approve adoption of the Youth Coordinated Entry System Framework as the foundation for a functional, continuously improving Youth CES in Montgomery County.





# The Framework



VOTE



# CES Evaluation Process- Progress update

---

HANNAH ROBERTS

SENIOR PROGRAM MANAGER

CSH

A solid teal horizontal bar spanning the width of the slide at the bottom.

# Coordinated Entry System (CES) Analysis

Regular evaluation is important to understand and continuously improve the quality and effectiveness of the CES based on feedback from participating projects and households. CoCs are also required to solicit feedback on CES at least annually (see [CPD-17-01, Section B.15.](#))



Review of Existing Data

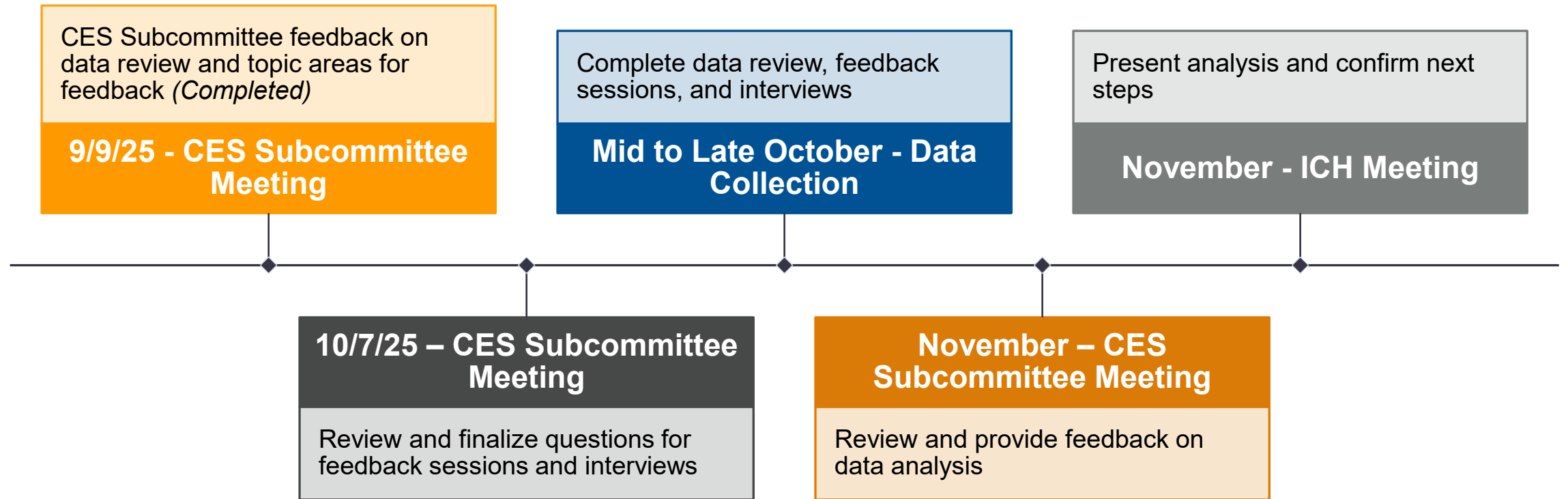


Feedback Sessions (4)  
with Providers, Agency  
Leaders, and SEPH Staff



Interviews (10) with  
People Utilizing CES

# Coordinated Entry System (CES) Timeline



# ICH Committees and Workgroups Updates



# Public Comments

---

# Announcements