

A B C D E F G H J K L M N P Q R



I HEREBY CERTIFY THAT THESE DOCUMENTS WERE PREPARED BY ME OR UNDER MY CLOSE PERSONAL SUPERVISION AND THAT I AM A DULY LICENSED PROFESSIONAL ENGINEER IN THE STATE OF MARYLAND. EXPIRATION DATE: MAY 6, 2028

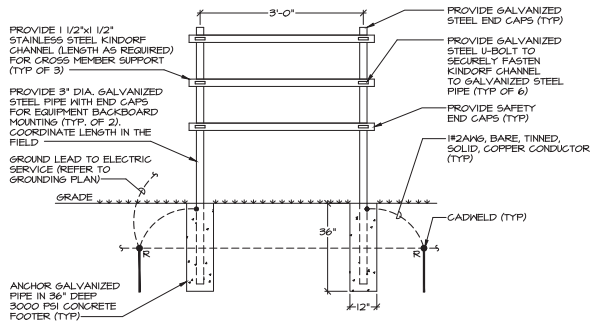
verizon
WOODSIDE TEMP RELO
CONTRACT NO. 1-445 & 1-5071 SILVER SPRING
MONTGOMERY COUNTY, MARYLAND 2010

REVISIONS:		
NO.	DESCRIPTION	DATE

LAST REV.:
PROJECT NO: 24087B
DATE: NOV. 12, 2024
SCALE: AS NOTED
TITLE:
DETAILS

SHEET:
E-5

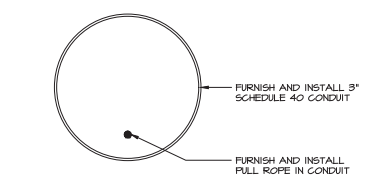
TEI#24087B



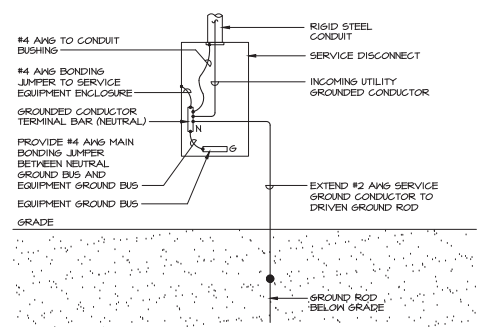
DETAIL - ELECTRIC SERVICE BACKBOARD
NO SCALE

ALARM NUMBER	DESCRIPTION
CG1	DOOR INTRUSION
CG2	COMMERCIAL POWER FAILURE
CG3	SURGE SUPPRESSION/LIGHTNING ARRESTOR
CG4	RECTIFIER FAILURE
CG5	MULTIPLE RECTIFIER FAILURE
CG6	BATTERY DISCHARGE
CG7	LOW VOLTAGE
CG8	DC POWER FAILURE
CG9	GENERATOR RUNNING
CG10	GENERATOR LOW FUEL
CG11	GENERATOR FAILURE
CG12	HVAC FAILURE
CG13	HIGH TEMP
CG14	LOW TEMP
CG15	TOWER LIGHT
CG16	TOWER LIGHT SIZE
CG17	RRH HP-CONVERTER FAILURE
CG18	RRH HP-CONVERTER FAILURE
CG19	RRH HIGH HUMIDITY
CG20	RRH INTRUSION
CG21	SMOKE FIRE
CG22	BUS BAR THEFT
CG23	
CG24	
CG25	MICROWAVE CRITICAL
CG26	MICROWAVE FAILURE
CG27	GENERATOR ALARM
CG28	FIRE SUPPRESSION DISCHARGE
CG29	FIRE SUPPRESSION TROUBLE
CG30	SECONDARY HVAC RUNNING
CG31	EXPLOSIVE GAS
CG32	HIGH HUMIDITY

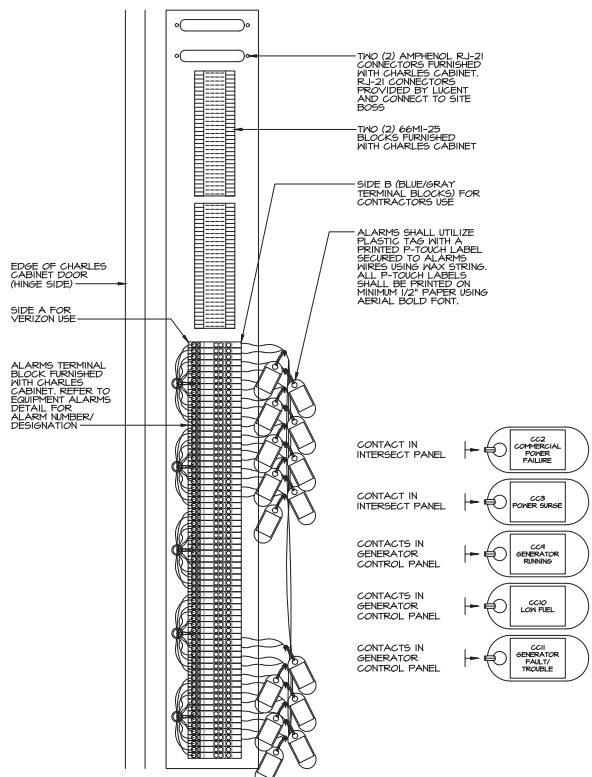
DETAIL - CHARLES CABINET ALARMS SCHEDULE
NO SCALE



DETAIL - 3" TELCO CONDUIT
NO SCALE (FIBER CONDUIT)



DETAIL - TYPICAL ELECTRIC SERVICE GROUNDING ELECTRODE
NO SCALE



DETAIL - ALARM LEADS TERMINAL
NO SCALE