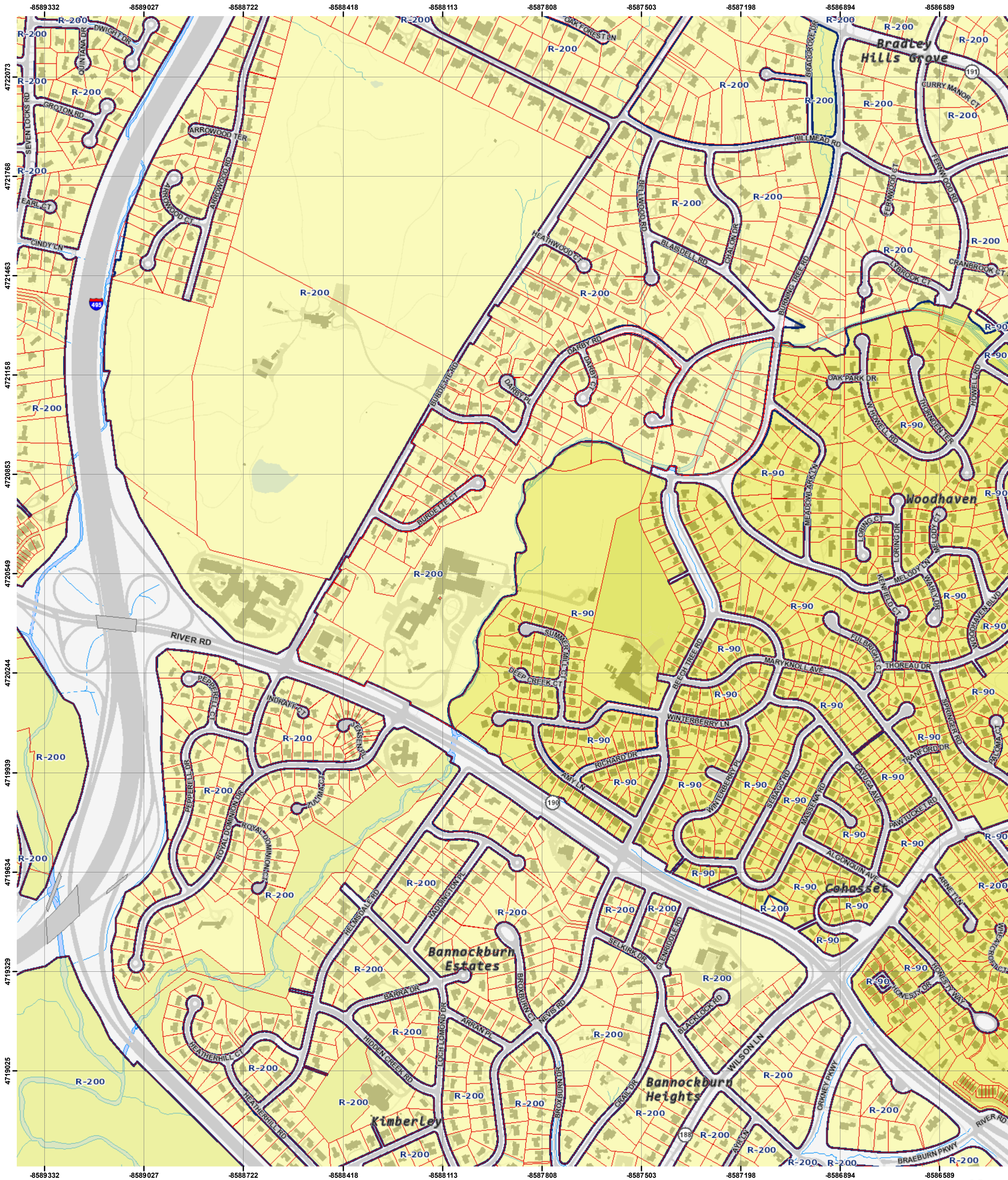


NOTES CONCERNING ZONING IN RIGHTS-OF-WAY  
1. Zone boundaries must not be depicted in public rights-of-way but must run to the centerline of each right-of-way.  
2. Zone boundaries within rights-of-ways previously dedicated by plat or other method of subdivision can be included in map amendments for density purposes; rights-of-way included in a map amendment boundary assume the new zoning assigned in the map amendment.

© Copyright M-NCPPC 2010  
This map is protected by copyright. It may not be copied or reproduced in any form, including electronic means such as: digitizing, scanning, and image processing, or by any system now known or to be invented, without permission in writing from the Montgomery County Planning Department.



# MONTGOMERY COUNTY ZONING MAP

The Maryland-National Capital Park and Planning Commission

Montgomery County Planning Department



Account #	03743658
Address	7303 RIVER RD BETHESDA, 20817
Landuse	Institutional/Community Facility
Legal Description	PAR FOUR BURNING TR HOLTON-ARMS SCHOOL
Zone	R-200
Overlay Zone	N/A
TDR Overlay Zone	N/A
Parking District	N/A
CBD	N/A
Parcel, Lot, Block	N624 / N/A, / N/A

Special Protection Area	N/A
Urban District	N/A
Enterprise Zone	N/A
Arts & Ent. District	N/A
Special Tax District	N/A
Bike/Ped Priority Area	N/A
Urban Renewal Area	N/A
Metro Station Policy Area	N/A
Priority Funding Area	Yes
Septic Tier	Tier 1: Sewer existing
Municipality	N/A
Master Plan	BETHESDA CHEVY CHASE
Historic Site/District	N/A

WSSC Grid	210NW07
Map Amendments	G-666 G-956
Water/Sewer Categories	N/A

Printed: 12/9/2024

1 inch = 623 feet

I certify that this document is a copy of the  
official Montgomery County Zoning Maps as  
downloaded on 12/9/2024 from [mcatlas.org/](https://mcatlas.org/zoning/)  
zoning.

*Jonathan Jones*

