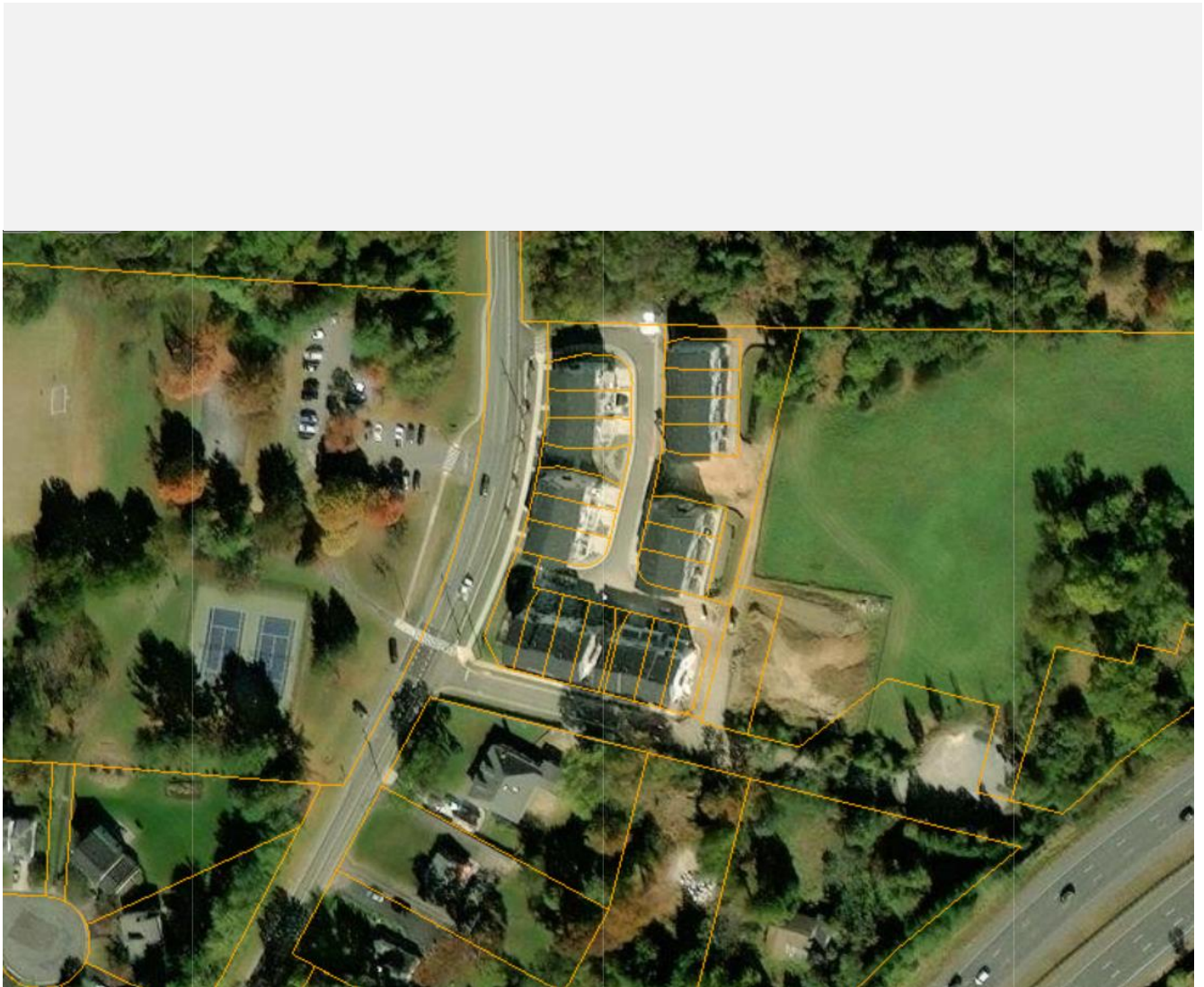




Contents

- 3. Bond Estimate Sheet (original submission)
- 4. Bond Estimate (Updated)
- 5. Approximate Cost Totals
- 6. Storm drain punch list
- 7. Photos of site



Department of Permitting Services

Bonds Estimation

Subdivision: Cashell Estates

Street Name: Redland Road

Permit Number:

Computed By: Dean Packard, PE

Quantity	Unit	Description	Unit Cost	Subtotals
400	C.Y.	Roadway Excavation	\$8.00	\$3,200.00
1	Ea.	Temporary Construction Entrance	\$3,500.00	\$3,500.00
30	S.Y.	8" Primary Paving	\$19.00	\$570.00
530	S.Y.	6" Secondary Paving	\$14.00	\$7,420.00
830	L.F.	Concrete Curb And Gutter	\$12.00	\$9,960.00
290	S.Y.	4" Concrete Sidewalk	\$23.00	\$6,670.00
140	S.Y.	4" Bituminous Path	\$17.00	\$2,380.00
1	Ea.	Commercial Driveway Apron	\$3,500.00	\$3,500.00
3	Ea.	Handicap Ramp	\$750.00	\$2,250.00
720	S.Y.	Sodding (Solid)	\$4.00	\$2,880.00
13	Ea.	Street Tree	\$250.00	\$3,250.00
1	Ea.	Utility Pole Relocation	\$15,000.00	\$15,000.00
200	S.Y.	2" Asphalt Pavement Mill & Overlay	\$20.00	\$4,000.00
12	Ea.	Lot Stakeout	\$500.00	\$6,000.00
2	Ea.	Street Lights(<36' Wide Paving)	\$5,000.00	\$10,000.00
1	Ea.	A-10 Inlet (10' x 2.5')	\$3,500.00	\$3,500.00
4	Ea.	A Manhole (4' Diameter)	\$3,200.00	\$12,800.00
2	Ea.	D Inlet	\$1,400.00	\$2,800.00
1	Ea.	Field Connection	\$2,500.00	\$2,500.00
439	L.F.	15" Class III RCP	\$27.00	\$11,853.00
90	L.F.	18" Class III RCP	\$30.00	\$2,700.00
75	L.F.	15" Class IV RCP Class IV	\$30.00	\$2,250.00
1	Ea.	15" Concrete End Section RCP	\$335.00	\$335.00
1	Ea.	18" Concrete End Section RCP	\$400.00	\$400.00
1	Ea.	HDPE Inlet	\$1,000.00	\$1,000.00

Total: \$120,718.00

Total + 5% Contingency: \$126,753.90

Bond: \$126,800.00

Fee @ 14.650%: \$18,576.20

Approved by: _____

Copyright 2015. Montgomery County Government All Rights Reserved.

Quantity	Unit	Description	Unit Cost	Subtotals
400	C.Y.	Roadway Excavation	\$8.00	\$3,200.00
1	Ea.	Temporary Construction Entrance	\$3,500.00	\$3,500.00
30	S.Y.	8" Primary Paving	\$19.00	\$570.00
530	S.Y.	6" Secondary Paving 240'x18' (2" 9.5mm)	\$14.00	\$7,420.00
830	L.F.	Concrete Curb And Gutter 30'	\$12.00	\$9,960.00
290	S.Y.	4" Concrete Sidewalk 39'x5'	\$23.00	\$6,670.00
140	S.Y.	4" Bituminous Path	\$17.00	\$2,380.00
1	Ea.	Commercial Driveway Apron	\$3,500.00	\$3,500.00
3	Ea.	Handicap Ramp	\$750.00	\$2,250.00
720	S.Y.	Sodding (Solid) 100 SY	\$4.00	\$2,880.00
13	Ea.	Street Tree 8	\$250.00	\$3,250.00
1	Ea.	Utility Pole Relocation	\$15,000.00	\$15,000.00
200	S.Y.	2" Asphalt Pavement Mill & Overlay	\$20.00	\$4,000.00
12	Ea.	Lot Stakeout	\$500.00	\$6,000.00
2	Ea.	Street Lights(<36'Wide Paving)	\$5,000.00	\$10,000.00
1	Ea.	A-10 Inlet (10' x 2.5')	\$3,500.00	\$3,500.00
4	Ea.	A Manhole (4' Diameter)	\$3,200.00	\$12,800.00
2	Ea.	D Inlet	\$1,400.00	\$2,800.00
1	Ea.	Field Connection	\$2,500.00	\$2,500.00
439	L.F.	15" Class III RCP	\$27.00	\$11,853.00
90	L.F.	18" Class III RCP	\$30.00	\$2,700.00
75	L.F.	15" Class IV RCP Class IV	\$30.00	\$2,250.00
1	Ea.	15" Concrete End Section RCP	\$335.00	\$335.00
1	Ea.	18" Concrete End Section RCP	\$400.00	\$400.00
1	Ea.	HDPE Inlet	\$1,000.00	\$1,000.00
Total:			\$120,718.00	
Total + 5% Contingency:			\$126,753.90	
Bond:			\$126,800.00	
Fee @ 14.650%:			\$18,576.20	

Items to be installed/repared:

Temporary Construction entrance removal				\$3,500
Surface lift of Asphalt (2") 240' x 18' = 53 Tons. @ \$125-ton Installed		MCDOT Cost		\$6,625
Curb & Gutter R&R	30' @ \$40 linear foot.	MCDOT Cost		\$1,200
Sidewalk R&R	40' x 5' (200 sqft=22.22sqyd) 23sqyd @ \$23	Seems low		\$529
Sodding	100 Sqyds @ \$4			\$400
Street Tree	8 @ \$250			\$2000
Lot Stakeout	(Property Corners)			\$4000
Streetlight	2 @ \$5000			\$10000
Misc. SD Repairs	10% of Structure totals \$19100			\$1910
Signs	?			*****
	TOTALS			\$32,074

Storm Drain Punch List:

General Notes:

Paint ALL bare steel battleship grey.

Secure all grates.

Parge all lift holes.

All areas shall be backfilled/stabilized inline and on grade.

No standing water

Channels to crown of pipe

All structures should be accessible.

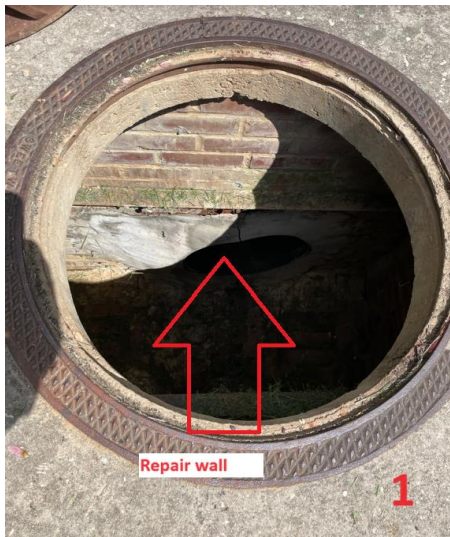
Structures (including frame & cover) parged.

Structure certifications submitted.

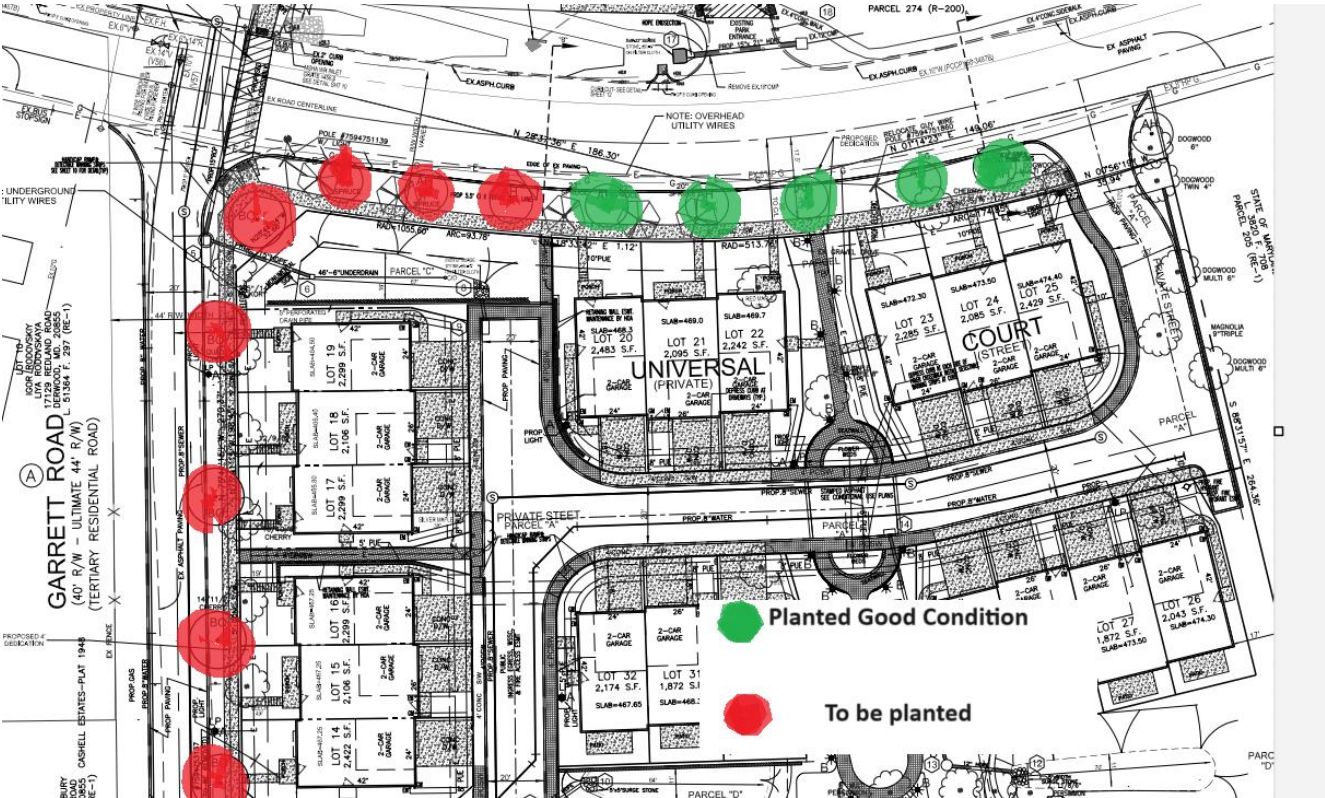
Flush/clean out all debris.

STRUCTURE:

1. Repair wall/parge
2. Secure grate
3. Parge/Secure frame & cover/ Fill to grade
4. Ok
5. Trim broken RCP
6. Slope block/ trim HDPE/parge
15. Secure to Structure
16. Slope to drain/ repair HDPE end



Tree Plan



Garret Rd West



Redland Rd North

