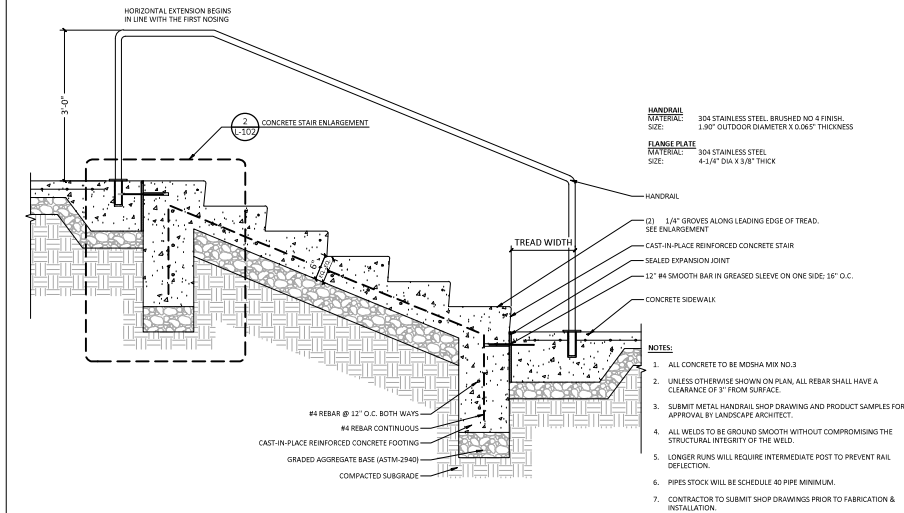


Exhibit 13(d)
OZAH Case No: CU 23-10



1 STAIR SECTION

2' x 2'-0"

CONCRETE PAVER SPECIFICATIONS:

TYPE A
MODEL: LINEA LARGE RECTANGLES
SIZE: 3 1/2" H x 5 7/8" W x 8 7/8" L
MATERIAL: CONCRETE PAVER
COLOR: SUBMIT SAMPLE TO LANDSCAPE ARCHITECT
PATTERN: SOLDIER COURSE

TYPE B
MODEL: BLU ROMM
A- 3 1/8" H x 13" W x 3 1/2" L
B- 3 1/8" H x 13" W x 1 1/2" L
C- 3 1/8" H x 13" W x 3 1/2" L
MATERIAL: CONCRETE PAVER
COLOR: SUBMIT SAMPLE TO LANDSCAPE ARCHITECT
PATTERN: MODULAR GRID
INSTALLATION: FOLLOW MANUFACTURER'S INSTALLATION GUIDELINES
MANUFACTURER: TESCO-BLOC OR APPROVED EQUAL

NOTES:

- JOINTS PERPENDICULAR TO CURBS SHALL BE LOCATED A MAXIMUM OF 16 FEET ON CENTER, OR LESS WHEN CHANGES OF PAVEMENT TYPE OCCUR. JOINTS SHALL BE FULL DEPTH AND CONCRETE WITH FACTORY EDGE OF PAVEMENT WHEREVER POSSIBLE. THIS DETAIL APPLIES WHERE PAVING MATERIALS ABUT VERTICAL SURFACES, SUCH AS WALLS AND CURBS. INSTALL STEEL EDGING AROUND THE EDGES OF THE PAVEMENT.
- EXPANSION JOINTS SHALL BE LOCATED AROUND ALL UTILITY STRUCTURES, LIGHT POLE BASES, AND AT EDGES THAT ADJOIN HARD
- UNLESS OTHERWISE SHOWN ON PLAN, CONTRACTOR TO SUBMIT LAYOUT OF PROPOSED CONTRACTION EXPANSION JOINTS FOR APPROVAL PRIOR TO POURING CONCRETE

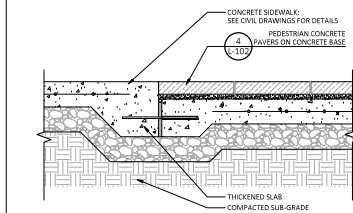
HAND TIGHT SAND SWEEP JOINTS, 1/8" MAX. SET ALL EDGES FLUSH WITH CONCRETE CURB AND PAVEMENT SURFACES.

PRE-CAST CONCRETE PAVER
3/4" BITUMINOUS SETTING BED
2% NEOPRENE TACK COAT
1/2" DIA X 12" STEEL DOCKS @ 24" O.C. ALONG ALL EXPANSION JOINTS. GRADE ONE END
1/2" WIDE EXPANSION JOINT WITH CORN FILLER (BELOW PAVER)

4 PEDESTRIAN CONCRETE PAVERS ON CONCRETE BASE

1 1/2" x 1'-0"

P-1407-P-01



6 PEDESTRIAN CONCRETE PAVERS TO CONCRETE PAVING TRANSITION

1 1/2" x 1'-0"

P-1407-P-03

FOR LOCATION OF UTILITIES CALL 811 or 1-800-257-7777 OR LOG ON TO www.811.com or http://www.nassauville.net or 811.NJ.NY.CO.VA.CT or ANY WORK IN THE U.S. ONLY

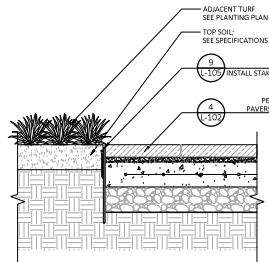
THIS DRAWING IS THE PROPERTY OF VIKI MARYLAND, LLC. IT IS TO BE USED ONLY FOR THE PROJECT AND SITE SPECIFICALLY IDENTIFIED HEREON. IT IS NOT TO BE REPRODUCED, COPIED, OR TRANSMITTED IN ANY FORM OR BY ANY MEANS, ELECTRONIC OR MECHANICAL, INCLUDING PHOTOCOPYING, RECORDING, OR BY ANY INFORMATION STORAGE AND RETRIEVAL SYSTEM, WITHOUT THE WRITTEN PERMISSION OF VIKI MARYLAND, LLC.

VP-001-1-001, Printed By: Facilities

P-1407-ST-01

2 CONCRETE STAIR ENLARGEMENT

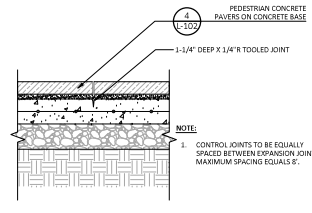
2' x 1'-0"



5 PEDESTRIAN CONCRETE PAVERS @ LAWN

1 1/2" x 1'-0"

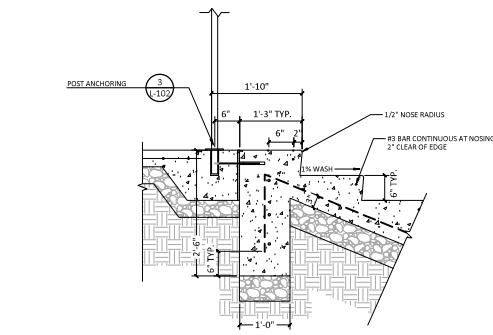
P-1407-P-02



7 PEDESTRIAN CONCRETE PAVERS @ CONTROL JOINT

1 1/2" x 1'-0"

P-1407-P-04

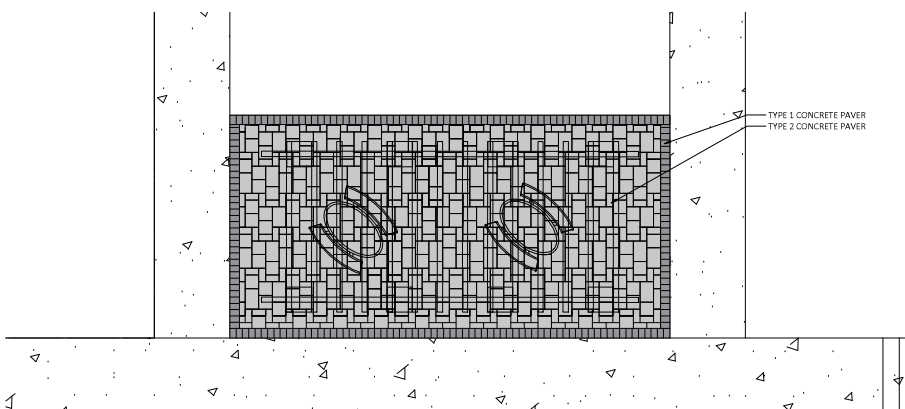
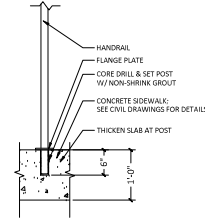


3 POST ANCHORING

2' x 1'-0"

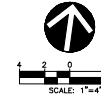
P-1407-ST-02

P-1407-ST-03



LEGEND

TYPE 1 CONCRETE PAVER
TYPE 2 CONCRETE PAVER



NOTE:

- ALL FINAL PAVEMENT SECTIONS TO BE DETERMINED BY GEOTECHNICAL ENGINEER BASED ON IN-SITU SOILS TESTING AT THE TIME OF CONSTRUCTION.

VIKA
VIKA MARYLAND, LLC
20251 Century Blvd., Suite 400
Germantown, MD 20874
301.574.4100 | vika.com
Our Site Set on the Future.

PREPARED FOR:
COMMUNITY HOUSING
INITIATIVE, INC.
1123 ORMOND COURT
MICHAM, VA 22051
CONTACT: PATRICK BYRNE
703.556.9568
pbyrne@chids.org

CIVIL ENGINEER/LANDSCAPE
ARCHITECT:
VIKA MARYLAND
20251 CENTURY BLVD.
SUITE 400
GERMANTOWN, MD 20874
CONTACT: JOSH SLOAN
301.574.4100
jsloan@vika.com

REVISIONS	DATE

TRAVILAH ROAD
6TH ELECTION DISTRICT
MONTGOMERY COUNTY,
MARYLAND
WSSC GRID: 218NW11
TAX MAP: P-12

SITE DETAILS

PROFESSIONAL SEAL
STATE OF MARYLAND
LANDSCAPE ARCHITECT
JOSH SLOAN
1123 ORMOND COURT
MICHAM, VA 22051
301.574.4100 | vika.com
Our Site Set on the Future.

DESIGNED BY: JC
DATE ISSUED: 08/22/2024
PROJECT: VM1407
DRAWING NO.: L-102