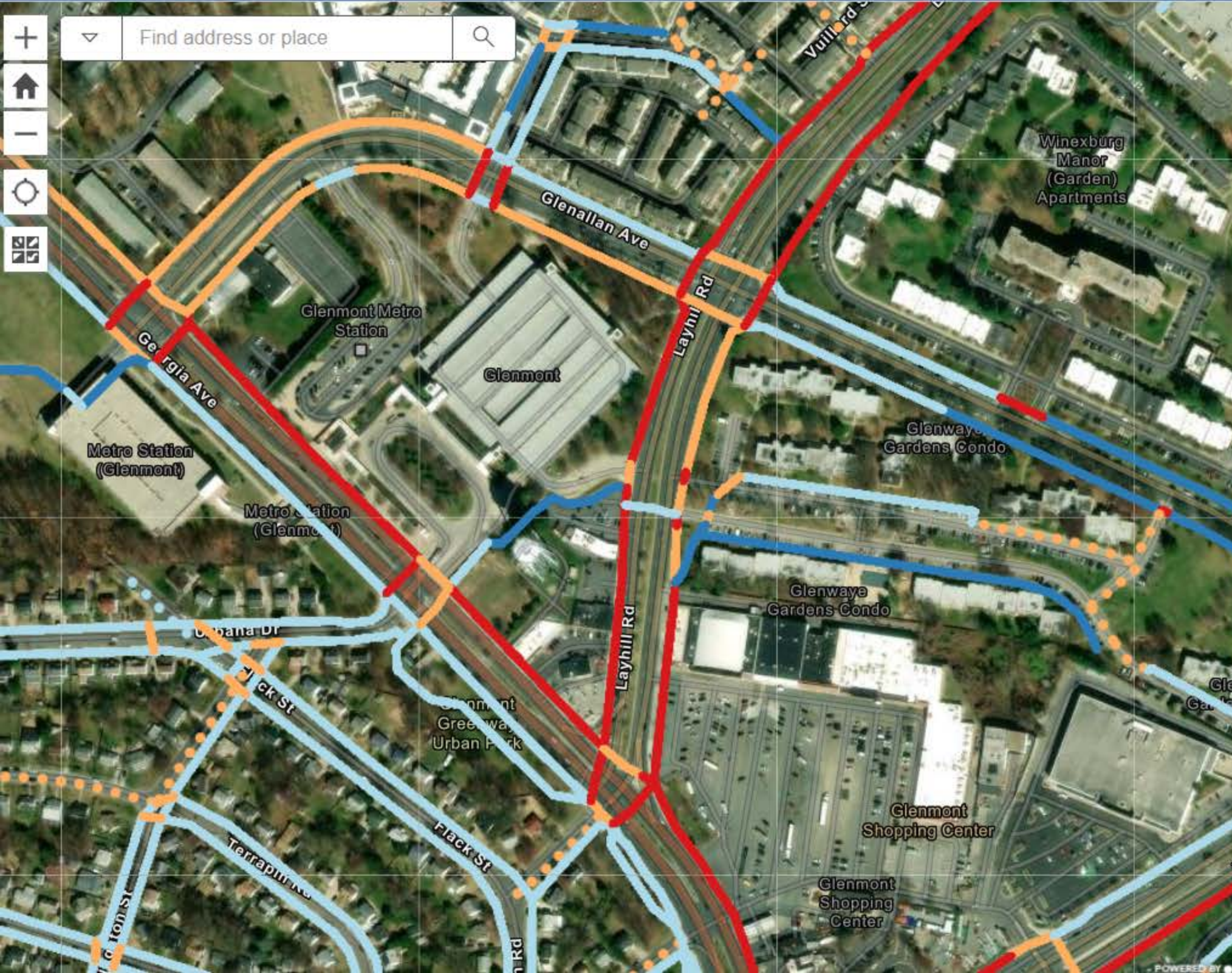




Pedestrian Level of Comfort Map

10/21/2024



WELCOME

INFO

MONTGOMERY COUNTY'S

PEDESTRIAN PLAN

Pedestrian Level of Comfort (PLOC) was developed by the Montgomery County Planning Department together with Toole Design Group to quantify how comfortable people feel when they walk in certain traffic conditions. The PLOC analysis assigns a comfort level to pathways and crossings based on factors such as traffic speed, number of lanes, and whether there is a buffer between a pathway and the street. When a street receives a relatively poor score, it is a sign that a change is needed to make it a place where more people will feel comfortable walking.

Learn more about the [Pedestrian Level of Comfort methodology](#).

Measure (on/off)

Pedestrian Level of Comfort

Very Comfortable

Somewhat Comfortable

Uncomfortable

Undesirable

Pathways

Streets without
Sidewalks/Paths

