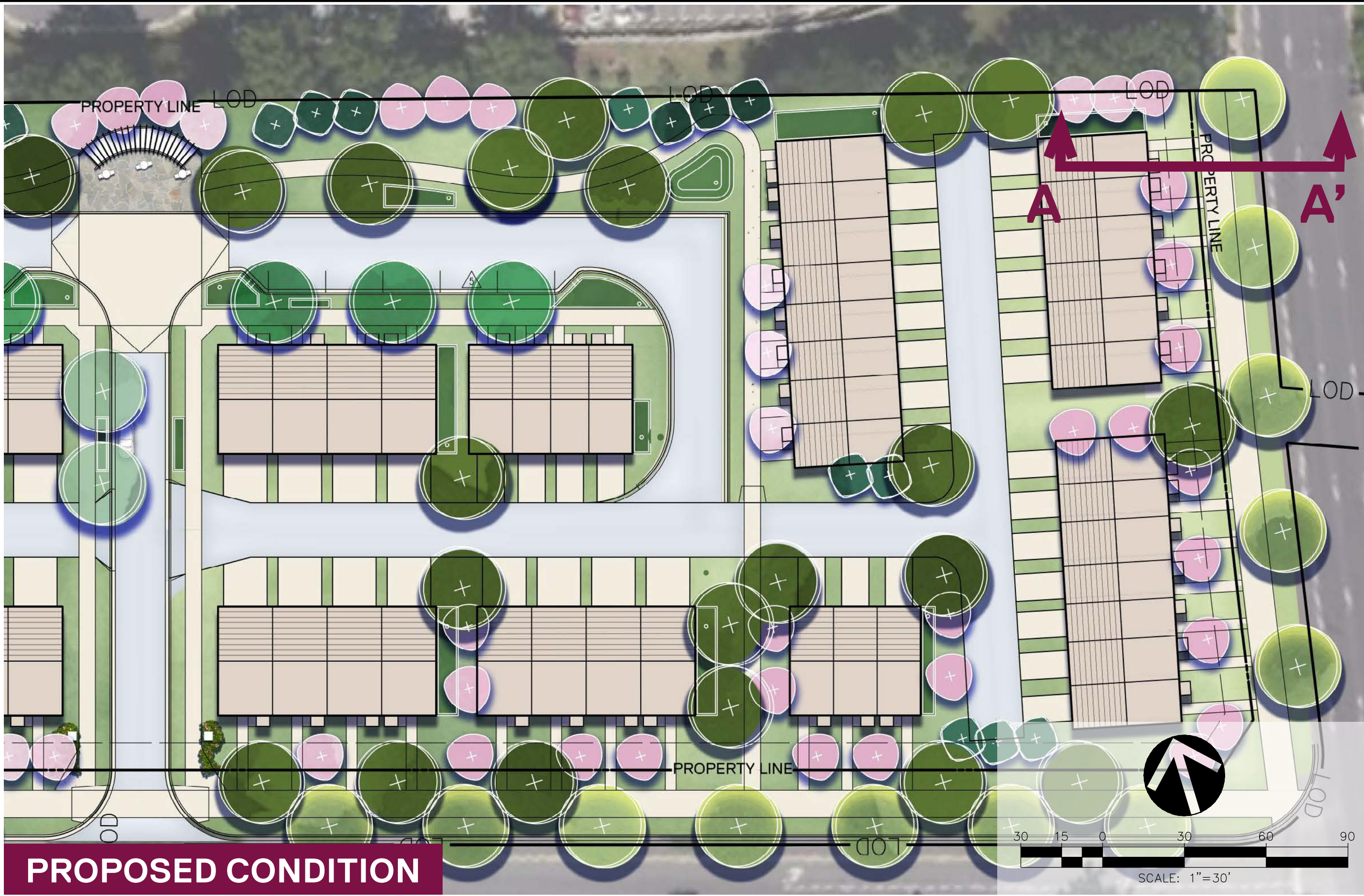


E-FILE STAMP

PREPARED FOR:



EXISTING CONDITION



PROPOSED CONDITION



VIKA MARYLAND, LLC
20251 Century Blvd., Suite 400
Germantown, MD 20874
301.916.4100 | vika.com
4041 Powder Mill Rd., Suite 215
Beltsville, MD 20705
240.848.7433 | vika.com
Our Site Set on the Future.

PREPARED FOR:
NOTLEY ASSEMBLY
LLC
1910 ASSOCIATION
DRIVE
RESTON, VA 20191
202.360.5768
CONTACT: DAVID MULLER
e-mail: DMuller@ryansdev.com

PLANNER & CIVIL ENGINEER:
VIKA MARYLAND, LLC
20251 CENTURY
BOULEVARD
SUITE 400
GERMANTOWN MD, 20874
301.916.4100
CONTACT: CHANDA BEAUFORT,
R.L.A.
beaufort@vika.com

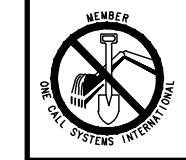
LANDSCAPE ARCHITECT:
VIKA MARYLAND, LLC
20251 CENTURY
BOULEVARD
SUITE 400
GERMANTOWN MD, 20874
301.916.4100
CONTACT: ESRA SOYTUTAN, R.L.A.
LEED AP ND
soytutan@vika.com

Exhibit 50 (e)
OZAH Case No: H-159

A

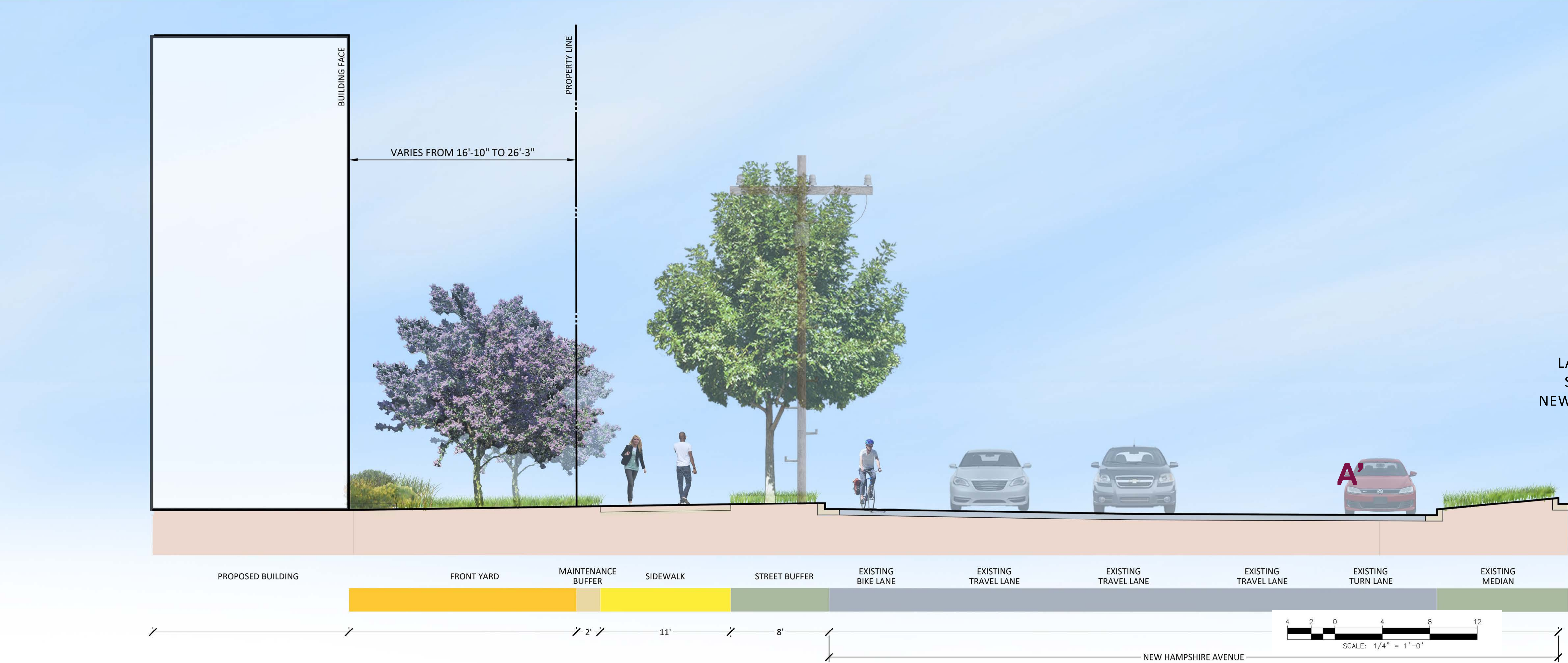
PROPOSED SECTION

NOT FOR CONSTRUCTION



FOR LOCATION OF UTILITIES CALL
8-1-1 or 1-800-257-7777 OR LOG ON TO
www.call811.com or http://www.missutility.net
48 HOURS IN ADVANCE OF ANY
WORK IN THIS VICINITY

The excavator must notify all public utility companies with underground
facilities in the area of proposed excavation and have those facilities
located by the utility companies prior to commencing excavation. The
excavator is responsible for compliance with requirements of Chapter
36A of the Montgomery County Code.



LANDSCAPE
SECTION -
NEW HAMPSHIRE
AVE