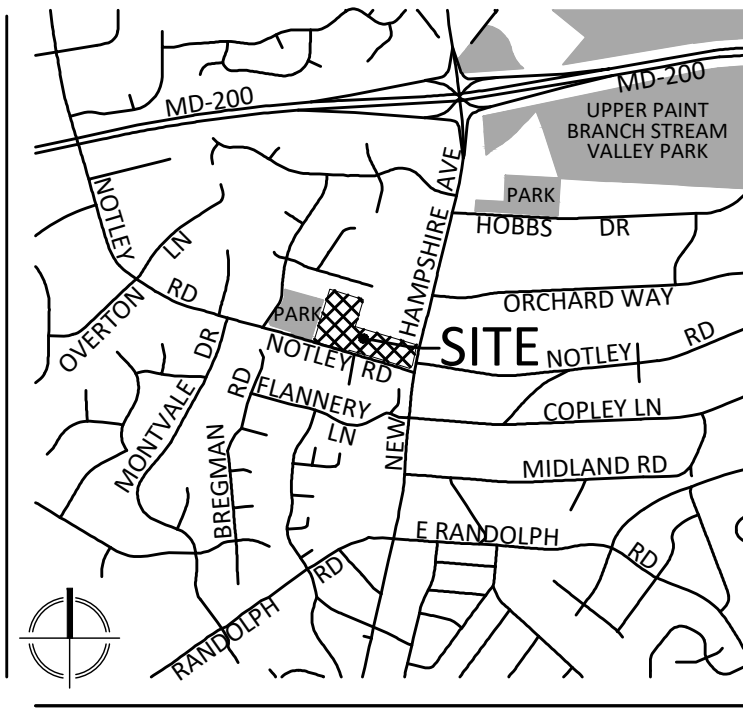


E-FILE STAMP

Exhibit 75
OZAH Case No. H-159



VICINITY MAP
SCALE: 1" = 2000'

VIKA
VIKA MARYLAND, LLC
20251 Century Blvd., Suite 400
Germantown, MD 20874
301.916.4100 | vika.com
4041 Powder Mill Rd., Suite 215
Beltsville, MD 20705
240.848.7433 | vika.com
Our Site Set on the Future.

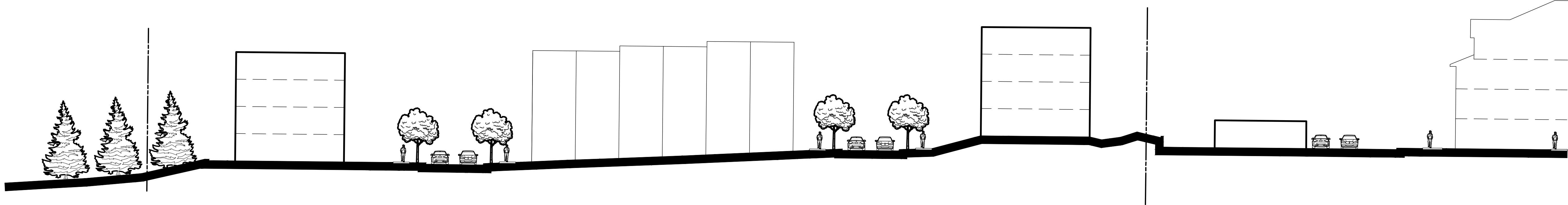
PREPARED FOR:
NOTLEY ASSEMBLAGE LLC
1910 ASSOCIATION DRIVE
RESTON, VA 20191
202.360.5768
CONTACT: DAVID MULLER
e-mail: DMuller@ryansdev.com

PLANNER & CIVIL ENGINEER:
VIKA MARYLAND, LLC
20251 CENTURY BLVD
SUITE 400
GERMANTOWN MD, 20874
301.916.4100
CONTACT: CHANDA BEAUFORT, R.L.A.
or LOGAN B. KELSO, P.E.
chanda.beaufort@vikamd.com
logan.kelso@vikamd.com

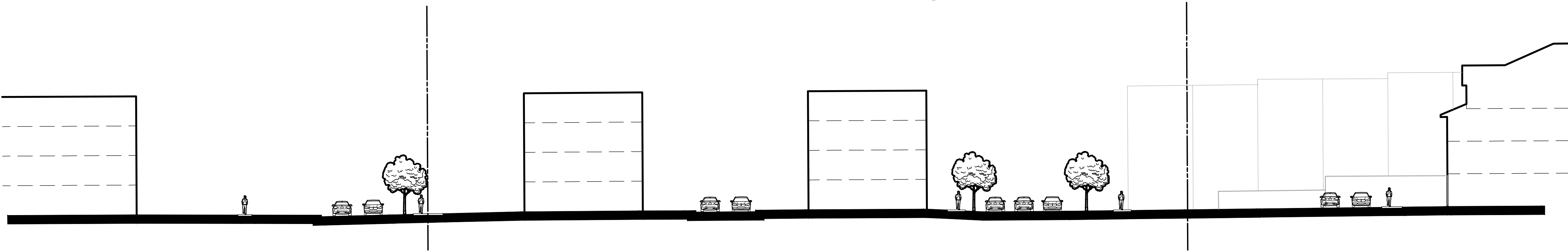
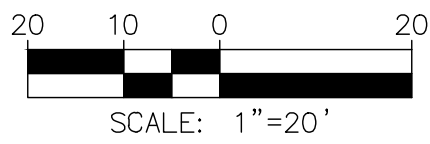
LANDSCAPE ARCHITECT:
VIKA MARYLAND, LLC
20251 CENTURY BLVD
SUITE 400
GERMANTOWN MD, 20874
301.916.4100
CONTACT: ESRA SOYTUTAN, RLA,
LEED AP MD
esra.soytutan@vikamd.com

ATTORNEY:
LERCH, EARLY & BREWER,
CHTD.
7600 WISCONSIN AVE
SUITE 700
BETHESDA MD, 20814
301.986.1300
CONTACT: ELIZABETH C. ROGERS, ATTY
ecrogers@lercheearly.com

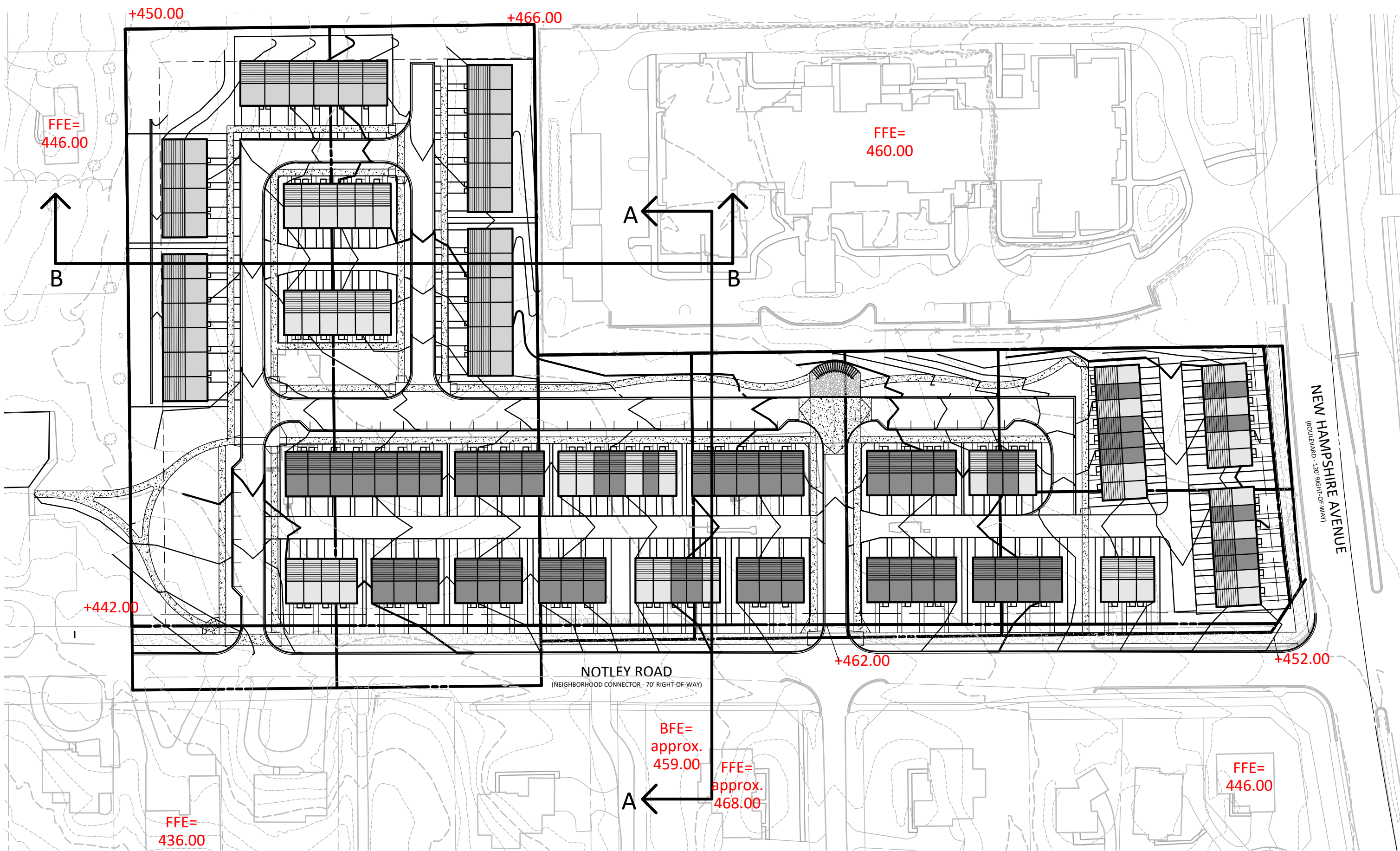
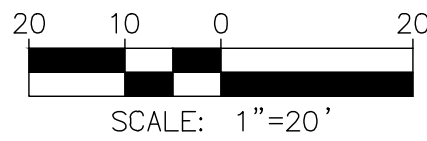
TRAFFIC ENGINEER:
GOROVE SLADE
4550 MONTGOMERY AVE
SUITE 400
BETHESDA MD, 20814
202.540.1927
CONTACT: KATIE WAGNER, P.E.
khw@goroveslade.com



SECTION A-A



SECTION B-B



NOT FOR CONSTRUCTION

"FOR LOCATION OF UTILITIES CALL
8-1-1 or 1-800-257-7777 OR LOG ON TO
www.call811.com or http://www.missutility.net
48 HOURS IN ADVANCE OF ANY
WORK IN THIS VICINITY"

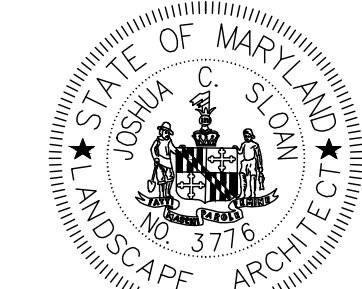
The excavator must notify all public utility companies with underground
facilities in the area of proposed excavation and have those facilities
located by the utility companies prior to commencing excavation. The
excavator is responsible for compliance with requirements of Chapter
36A of the Montgomery County Code.

NOTLEY ROAD
5TH ELECTION DISTRICT
MONTGOMERY COUNTY,
MARYLAND
WSSC GRID: 218NE01
TAX MAP: JR52

#H-159

SECTIONS

PROFESSIONAL SEAL



I HEREBY CERTIFY THAT THESE DOCUMENTS WERE
PREPARED OR APPROVED BY ME, AND THAT I AM A DULY
LICENSED REGISTERED LANDSCAPE ARCHITECT UNDER THE
LAWS OF THE STATE OF MARYLAND.
ESRA SOYTUTAN, LICENSE NO. 3776
EXPIRATION DATE: MAY 11, 2025

THE INFORMATION, DESIGN AND CONTENT OF THESE
DRAWINGS OR DOCUMENTS ARE PROPRIETARY TO VIKA
MARYLAND, LLC AND CONSTITUTE ITS PROPRIETARY
INTELLECTUAL PROPERTY. THESE DRAWINGS AND/OR
DOCUMENTS ARE NOT TO BE REPRODUCED, COPIED,
COPIED, DIGITALLY CONVERTED, MODIFIED OR USED
FOR ANY PURPOSE, IN ANY FORMAT, WITHOUT PRIOR
WRITTEN AUTHORIZATION FROM VIKA MARYLAND, LLC.
VIOLATION MAY RESULT IN PROSECUTION. ONLY
APPROVED, SIGNED AND SEALED PLANS OR DRAWINGS
MAY BE UTILIZED FOR CONSTRUCTION PURPOSES.

© 2025 VIKA MARYLAND, LLC

DRAWN BY: SG/BS
DESIGNED BY: JS/CSB
DATE ISSUED: 04/17/2025

VIKA
PROJECT VM50728
DRAWING
NO. FZP-03

SHEET NO.