



Outreach & Procurement Overview

Montgomery County Office of Procurement
Virtual Open House

Wednesday, July 17, 2024



Virtual Open House



In this Open House, we will examine -

- ❑ Introduction to Maryland Transit Solutions (MTS)
and the Purple Line Transit Project
- ❑ DBE Program Overview
- ❑ MTS' Outreach & Procurement Process
 - ❑ Outreach Process
 - ❑ Building Connected (RFP Process)
 - ❑ Contract Review Process
 - ❑ Purchase Order (PO) Engagement
- ❑ Procurement Opportunities
- ❑ Q&A



Team Introductions

Who is MTS?

Who is MTS



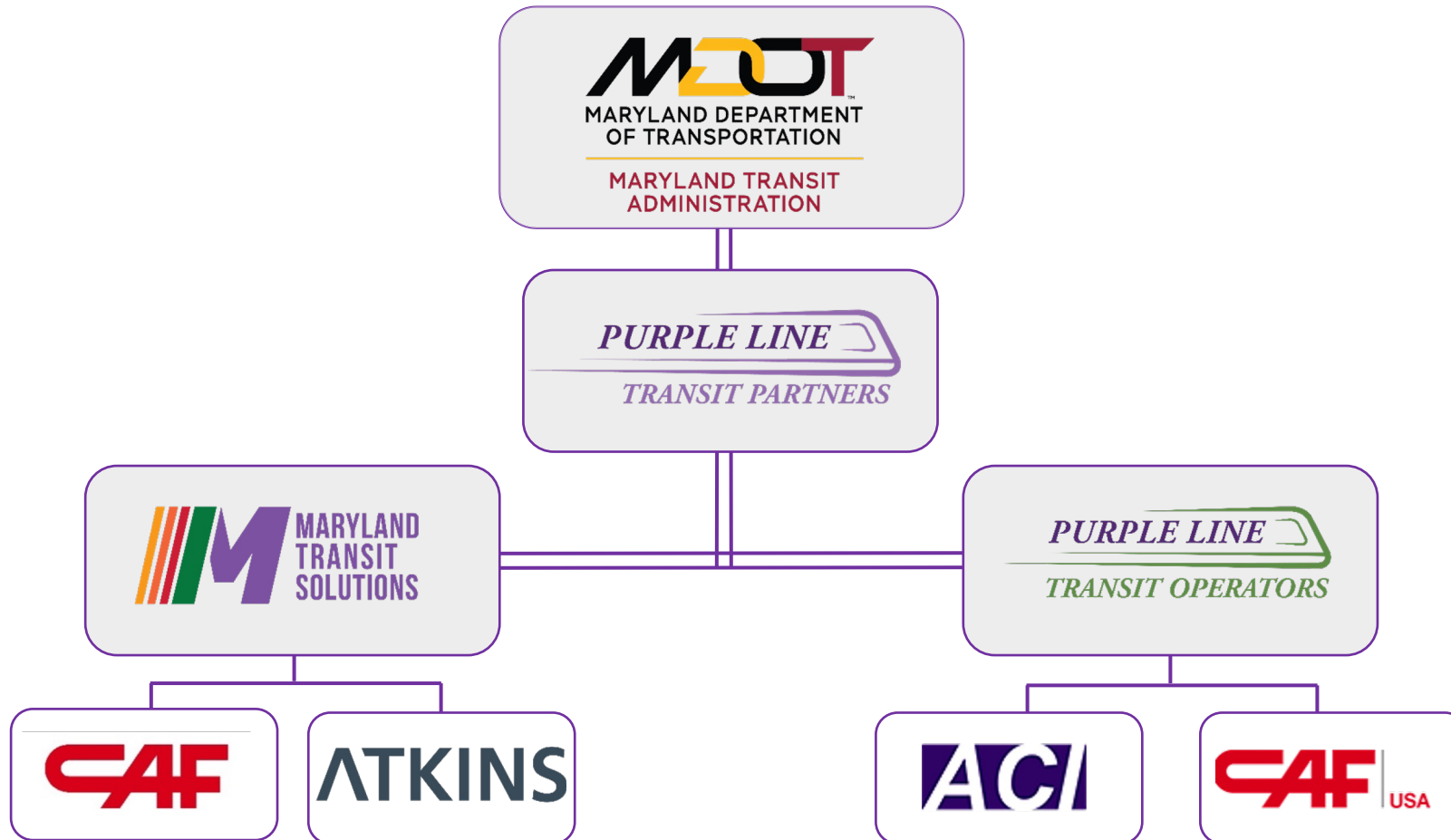
Who is Maryland Transit Solutions
(MTS)?

DRAGADOS



OHL USA

Who is MTS





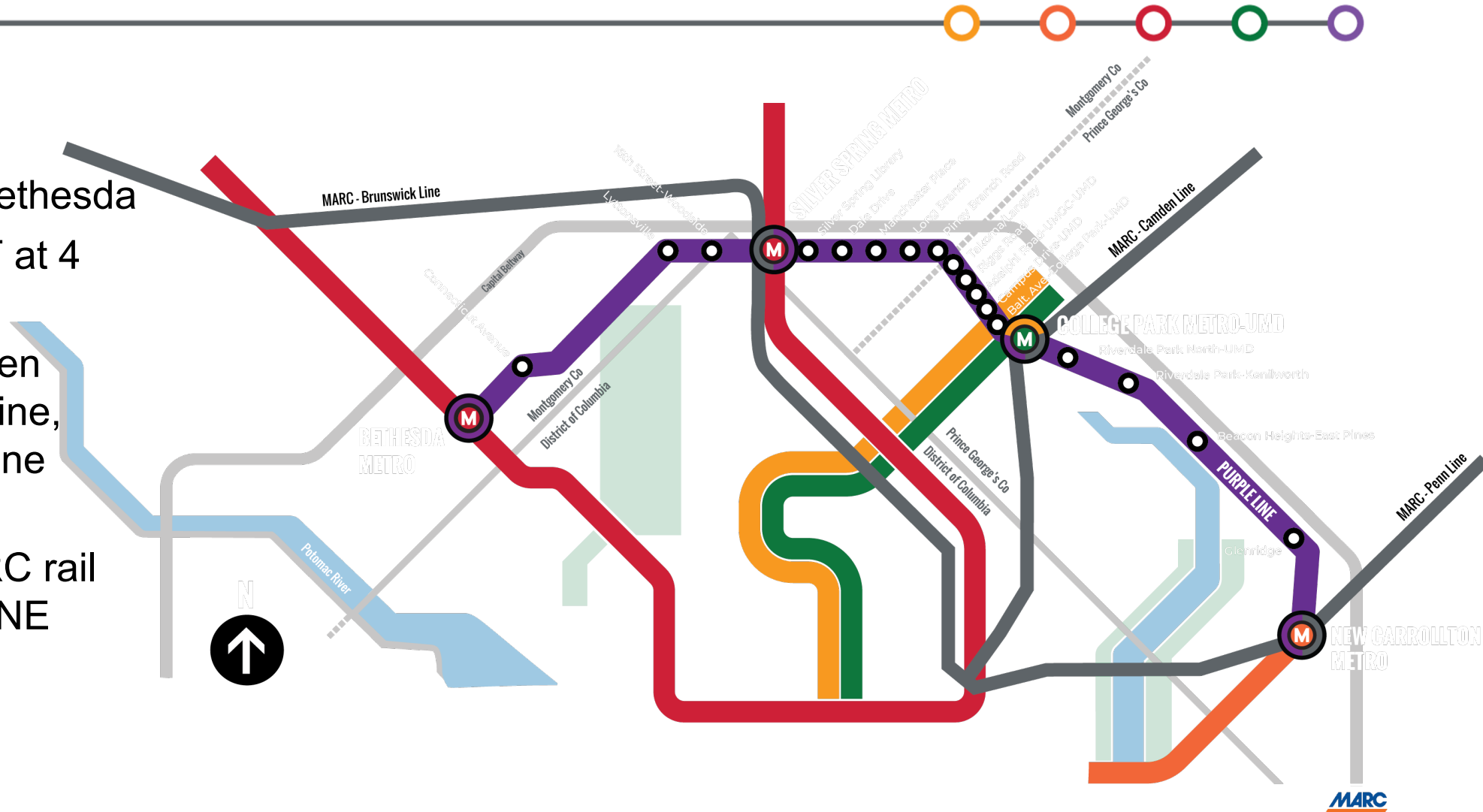
Project Overview

Purple Line Transit Project



Purple Line Transit Project

- 16.2 miles long; 21 stations
- New Carrollton to Bethesda
- Connects to WMAT at 4 stations
 - Red Line, Green Line, Yellow Line, and Orange Line connections
- Connects to 3 MARC rail lines and Amtrak's NE Corridor
- Moves from Prince George's County to Montgomery County



Purple Line Transit Project – Important Benefits

- Create several new multimodal connections across the region
- Expand transit opportunities to two of the fastest growing counties in the state
- Create convenient, dependable east-west transit
- Spur economic growth across two counties
- Provide significant environmental benefits through the operation of electric vehicles and reduction of vehicular emissions



Purple Line Transit Project – Light Rail Vehicles

- Light rail vehicle production continues, 26 of 28 have been produced with 26 ready to ship
- Delivery to begin Fall 2023 to the Glenridge Operations and Maintenance Facility
- 80 seats available, 400 standing room capacity
- Low floor with wide doorways
- Flexible space and folding seats to allow for eight wheelchairs and bicycle storage





DBE Program

Program Overview & Goals

DBE PROGRAM & GOALS

DIVERSITY MAKES THE DIFFERENCE

OUR COMMITMENT

We know diversity builds a better project, and we'd like to take the time to **THANK YOU!** Your participation helps us meet and/or exceed our 22% DBE project goal, more importantly it also:

- Grows your company
- Provides experience for future projects
- Stimulates the local workforce
- Creates legacy businesses in the local market
- Improves the travel experience of millions daily

OUR PLAN TO ASSIST YOU

- Make bid packages easily accessible through Building Connected
- Unbundle larger bid packages to make bidding more feasible
- Provide a point of contact for each bid package
- Remove barriers with bonding requirements on bid packages under \$5 million
- Support you along the way from project bidding through project execution



DBE Certification



Who certifies a firm?

- The Maryland Department of Transportation (MDOT) DBE Directory for Unified Certification Program (UCP)
- <https://marylandmdbe.mdbecert.com/?TN=marylandmdbe>

There are certification requirements to ensure program is standardized

- Firm is a for-profit business; at least 51% owned by a socially and economically disadvantaged individual(s), etc.
- MTS collaborates with MDOT to host DBE Certification Trainings
 - Workshops cover DBE program requirements in detail and introduce Expansion of Services process

When does a firm need to be certified?

- Before award

Why it is important?

- In order for MTS to claim credit towards the goal, the firm must be a DBE certified firm, hold the applicable NAICS code for the scope of work and be able to independently perform a Commercially Useful Function (CUF).

What is a NAICS Code?



What is a NAICS Code?

- ❑ North American Industry Classification System (NAICS)
- ❑ It is the standard used by Federal agencies to classify business capabilities

What are the differences between a 2- series, 3-series, 4-series and 5-series?

- ❑ 2- Series: Construction
 - ❑ 237990: Other Heavy and Civil Engineering Construction
- ❑ 3- Series: Manufacturer
 - ❑ 331110: Manganese metal ferrous alloys manufacturing
- ❑ 4- Series: Suppliers & Dealers
 - ❑ 423510: Aluminum and aluminum alloy primary forms merchant wholesalers
- ❑ 5- Series: Professional Services
 - ❑ 541330: Civil engineering services



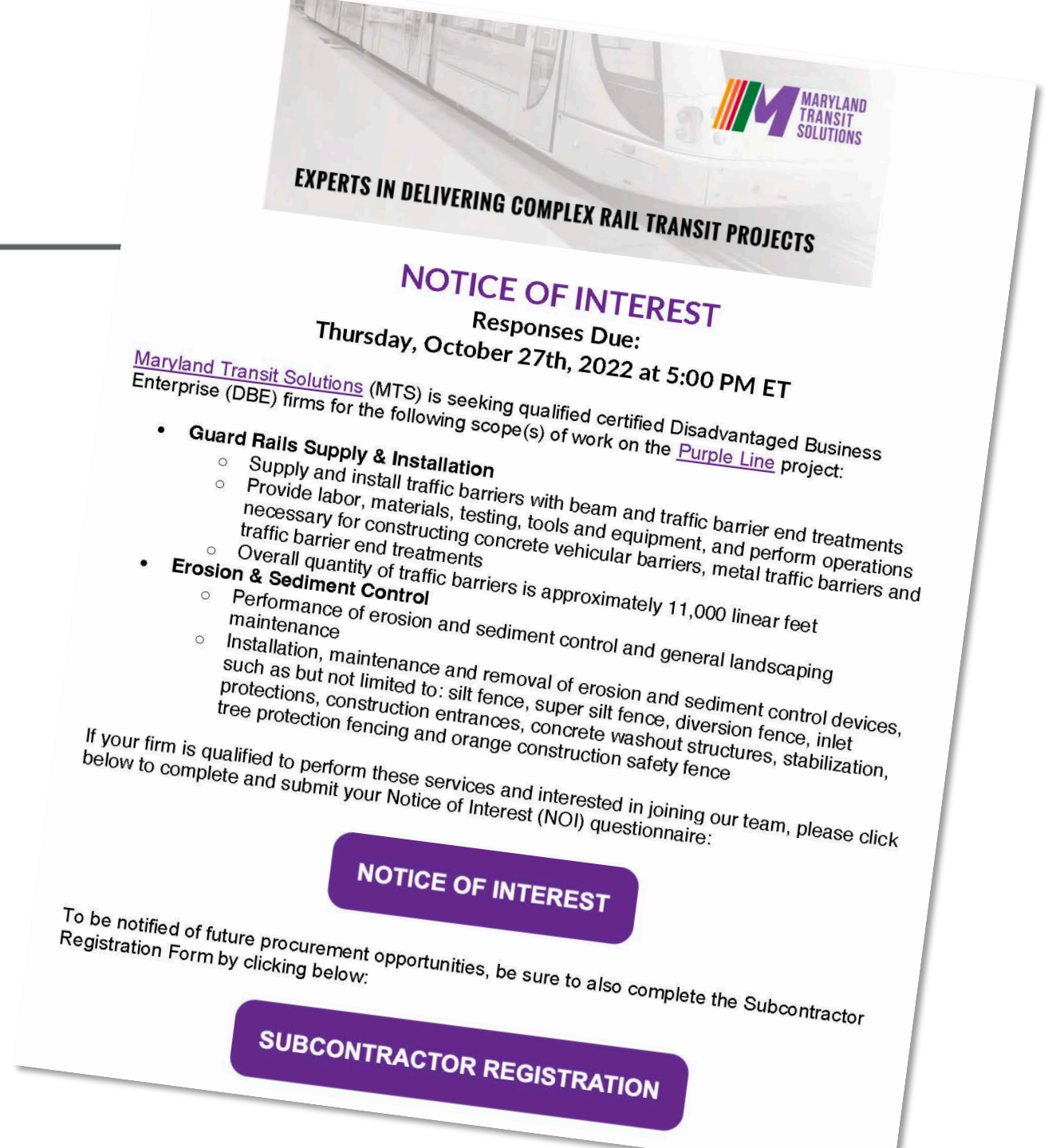
Outreach Process

Notice of Interest & Call Efforts



Outreach Process

- Notice of Interest (NOI) Eblast sent to all firms registered as DBE in the MDOT UCP Database
- Also sent to all firms registered as interested vendors through the MTS project website
- Firms can submit interest via survey directly from NOI eblast
- Targeted call effort conducted for firms with applicable NAICS code(s) for scope-of-work(s)
- Interested firms are vetted and placed on bidders list to receive RFP
 - Bid list is sent to Contracts Dept. for next steps



Project Website



- HOME
- TEAM
- PROJECT INFO
- DBE PROGRAM
- EVENTS
- CAREERS
- CONTACT

- DBE News & Tools
- Contracting Opportunities

Register with us at www.marylandtransitsolutions.com

Maryland Transit Solutions Joint Venture

EXPERTS IN DELIVERING COMPLEX RAIL TRANSIT PROJECTS



Project Website



Construction

PROCUREMENT OPPORTUNITIES



Maryland Transit Solutions

<https://marylandtransitsolutions.com/>

 Riverdale
5700 Rivertech Court Riverdale, MD 20737

Description

The Purple Line is a 16.2-mile light rail transit line with 21 stations that will extend from Bethesda in Montgomery County to New Carrollton in Prince George's County. It will provide a direct connection to the Metrorail Red Line at Bethesda and Silver Spring; Green Line at College Park; and the Orange Line at New Carrollton; as well as all three of the MARC rail lines and Amtrack's Northeast Corridor at New Carrollton. This project will serve the existing dense residential neighborhoods, attractions, and employment and education centers by providing faster, more direct, and more reliable service.

 **Location**
Montgomery and Prince George Counties, MD

 **Bids Due**
11/30/2022 at 12:00 PM EST



Interested in bidding?

Use the buttons on the right to join RFPs which will allow you to view more information, download files and receive future messages.

Number	Name	Job Walk	Bids Due ▾	
4DRY - U103	U103: POI 14 Dry Utility Work	--	2/24/2023 12:00 PM EST	Join



Bidding Process

Building Connected



RFP / Bidding



NEED A CONTRACT?

Send email request to Contracts, including:

- ☐ SCOPE OF WORK DESCRIPTION
- ☐ TAKE OFF
- ☐ DESIGN DRAWINGS
- ☐ EXTRACT FROM SPECIAL SPECIFICATIONS
(optional)

RFP will be drafted and placed on Project's procurement portal, Building Connected

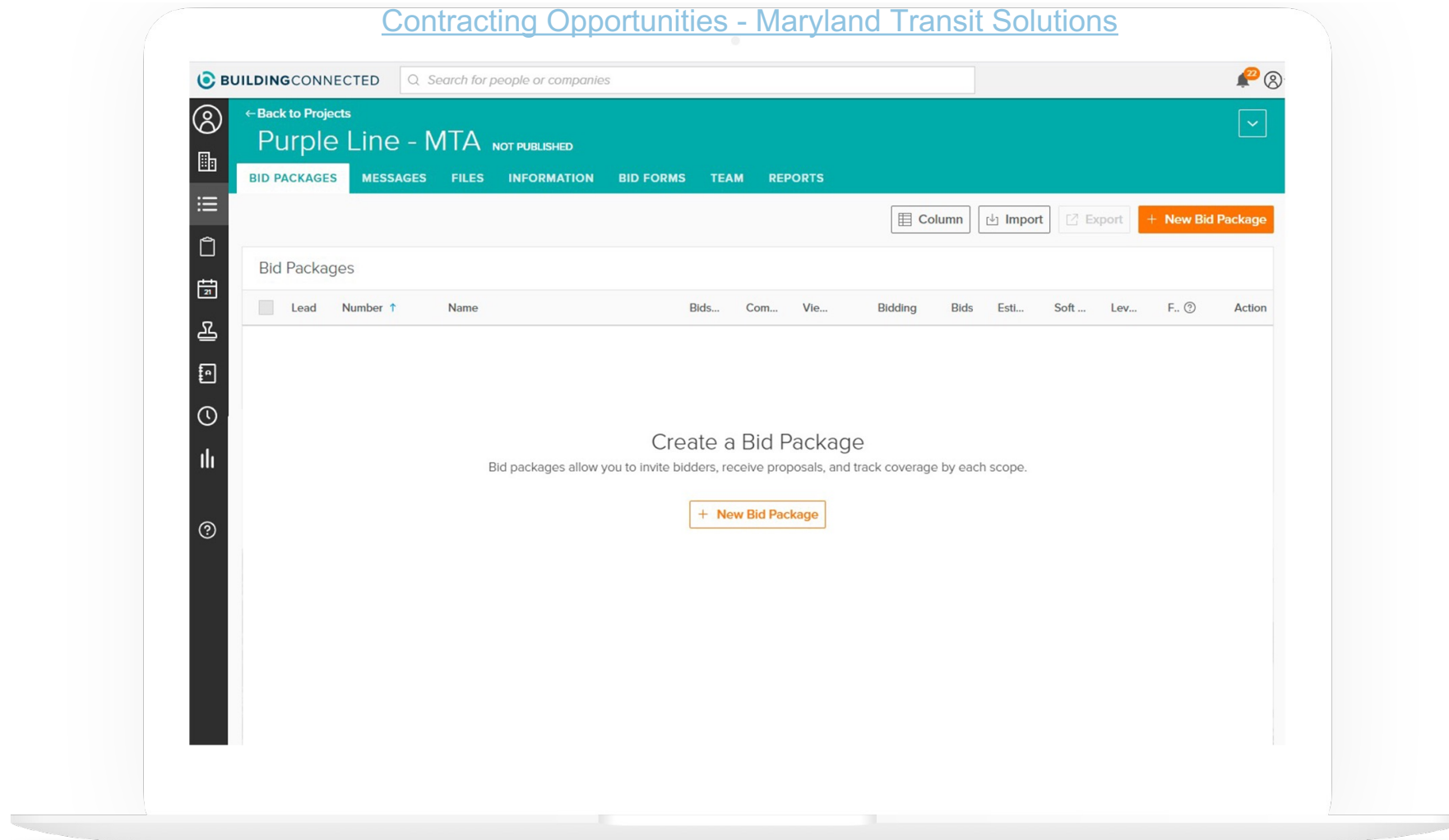


BUILDINGCONNECTED

Building Connected

ALL PACKAGES ARE POSTED ON OUR WEBPAGE

[Contracting Opportunities - Maryland Transit Solutions](#)





Review Process

Contract & PO Reviews

Contract Review Process



- REQUEST FOR QUOTE PACKAGE
- BUILDING CONNECTED OUTREACH
- QUOTES COMPILATION AND TECHNICAL ANALYSIS
- PRE-AWARD MEETINGS
- COMPARATIVE MATRIX
- DBE THRESHOLD
- ELEMENTS OF BEST VALUE
 - PAST EXPERIENCE
 - CREWS AVAILABILITY
 - TECHNICAL REVIEW
 - SAFETY RECORDS
 - INTERNAL DECISION



Purchase Orders

PO Process

Purchase Order (PO) Process



- The purchasing department will receive an internal materials requisition
- We (purchasing department) will contact vendors for 3 different quotes for the requested material
- The quotes are reviewed, and a vendor will be selected based on price, availability, and/or service
- Once a selection has been made, a PO will be sent to the awarded vendor
 - The PO will consist of the quoted pricing, the ship to information, and point of contact
- The vendor should review the PO and make sure they agree with the pricing as well as the terms and conditions
- Once the vendor agrees with the above, they will sign and return it to MTS
 - MTS will then sign the PO as well and return it to vendor fully executed

Procurement Opportunities



Scope	NOI	Anticipated Timeline
Crane Rental & Services	TBD	Q3 - 2024
Engineering Consultant	TBD	Q3 - 2024
Onsite Repair Services	TBD	Q3 - 2024
Qualified Rigger Training	TBD	Q3 - 2024
Vacuum Truck Services	TBD	Q3 - 2024
Concrete Pumping	TBD	Q3 - 2024
Safety Training	TBD	Q4 - 2024
Rail Drilling	TBD	Q4 - 2024



Contact Us

Procurement & DBE Contacts



DBE Compliance Team



DBE/WFD Program Manager

Cory Raymond

craymond.ext@mtsJV.com



DBE/WFD Compliance Coordinator

Crystal Ruiz

cruiz.ext@mtsJV.com



DBE/WFD Compliance Coordinator

Ola Awodiya

oawodiya.ext@mtsJV.com



Register with us at www.marylandtransitsolutions.com

A photograph of a bridge over a river, surrounded by lush green trees. The image is darkened to serve as a background for the text.

QUESTIONS?

A large, modern industrial building with a dark grey facade and several large, light-colored garage doors. The building is under construction, with various construction materials and equipment visible in the foreground and around the base of the structure. The sky is clear and blue. The text "THANK YOU" is overlaid in large, white, bold, sans-serif capital letters across the center of the image.

THANK YOU