

FACT SHEET

Forest Glen Annex Environmental Restoration Activities

Landfill Sites FTGL-02, FTGL-03, and FTGL-04

Fort Detrick

Public Affairs Office
810 Schreider Street
Fort Detrick, Maryland 21702

E-Mail: usagpao@amedd.army.mil

Phone: 301-619-2018



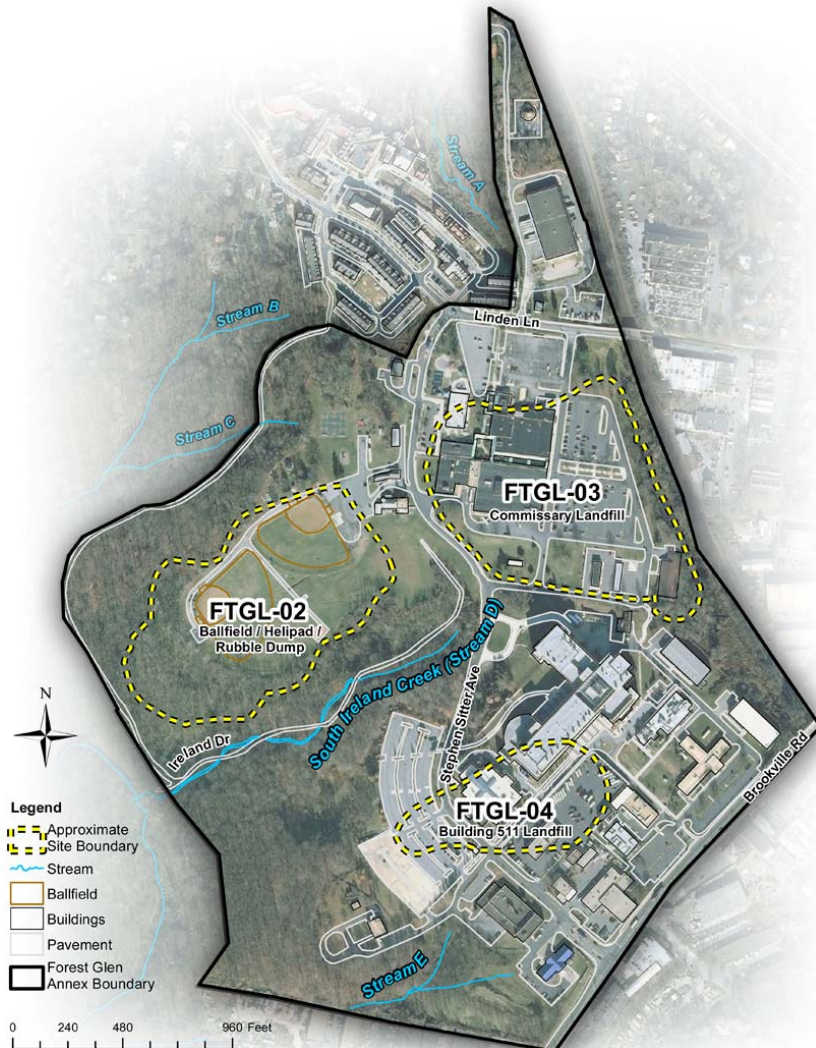
Site Histories

FTGL-02 Ballfield / Helipad / Rubble Dump Site

FTGL-02 is the first of three landfill sites at the Forest Glen Annex discussed in this fact sheet. FTGL-02 is located in the vicinity of the installation's ballfields and helipad. Waste disposal at this site likely occurred from the 1940s up into the early 1970s, when the construction of the ballfields started. The materials disposed of in the landfill reportedly included construction debris, medical waste, incinerator ash, household refuse and office waste. In 2009, an investigation of a rubble dump adjacent to the ballfields was completed. Based on the investigation results, the rubble dump was determined to be an extension of the landfill and is included as part of the FTGL-02 site. Additionally, streams located downgradient of the landfill have been identified as being impacted by iron precipitation likely from buried metal debris.

FTGL-03 Commissary Landfill

The FTGL-03 landfill site at the Forest Glen Annex is located near the installation Commissary. Several buildings are currently located within the landfill boundaries, including the new National Museum of Health and Medicine (NMHM). Waste disposal at this site likely occurred from the 1940s up into the early 1970s, when the construction of the Commissary began. The materials disposed of in the landfill reportedly included construction debris, medical waste, incinerator ash, household waste and office waste. High tetrachloroethylene (PCE) concentrations (approximately 12 parts per million) have been found in a monitoring well located along the eastern boundary of this landfill. This contamination may be migrating from off-site and requires further investigation to identify the source. A 2009 subsurface



investigation for the construction of the NMHM found fill material in FTGL-03 to a depth of 22 feet below the ground surface. The fill material encountered in borings consisted mainly of construction debris such as brick.

FTGL-04 Building 511 Landfill

This FTGL-04 landfill site is located in the vicinity of Buildings 511 and 503 and the Motor Pool. Waste disposal at this site likely occurred from the 1940s up into the early 1970s, when construction of Building 511 and the Motor Pool was completed. Two incinerators were once operated north of Building 511. The first incinerator was built in 1957 and operated until 1970; it was used to incinerate papers, contaminated wastes, animal bodies and garbage. From 1970 until 1984, a replacement incinerator was used to incinerate animal bodies and bedding. Ash from the incinerators was reportedly buried in the Forest Glen Annex landfills. Medical wastes were uncovered during excavation associated with the construction of the parking lot southwest of Building 511. During the construction of Building 503 in 1997, it was reported that approximately 1,700 truckloads of waste were removed and transported to the landfill at Fort Meade. However, waste material was reportedly left onsite at Building 503 after it was determined that removal was unnecessary for foundation construction.



View of Building 511 Landfill Site

Planned Environmental Investigations

In partnership with the Maryland Department of the Environment (MDE), the Army is currently completing a Remedial Investigation (RI) at the three Forest Glen Annex landfill sites. The RI work is being performed as part of the Army's Installation Restoration Program and in accordance with the Comprehensive Environmental Response, Compensation and Liability Act (CERCLA). The purpose of the RI effort is to determine the extent of landfill waste materials as well as the nature and extent of any potential perimeter or downgradient contaminant releases. Planned investigation activities include:

- Review available records.
- Conduct historical aerial photographic analysis to identify approximate areas of disturbance due to waste disposal activities.
- Delineate/confirm the extent of landfill waste material through geophysical survey, soil borings, test pits and soil gas sampling.
- Characterize landfill surface soils and assess risks to human health and the environment.
- Investigate perimeter/downgradient media to characterize potential landfill contaminant releases and assess risks to human health and the environment.
- Investigate sub-slab vapors to characterize potential contaminant vapor intrusion into buildings from subsurface waste materials.

The results of the RI will be used to aid in the development and evaluation of response action alternatives as part of a Feasibility Study analysis to address any unacceptable risk associated with site contaminants.

For more information on ongoing environmental investigations at the Forest Glen Annex, please contact the Fort Detrick Public Affairs Office (see contact information at top of this fact sheet).