

M E M O R A N D U M

June 19, 2020

TO: Transportation and Environment Committee
Planning, Housing, and Economic Development Committee

FROM: Glenn Orlin, Senior Analyst

SUBJECT: Open Streets¹

PURPOSE: Briefing

Over the past month the County's Transportation and Parks Departments temporarily have opened several streets and the roads in the public right-of-way for pedestrian and bicycle use, as well as for open-air dining. The Committee has requested a briefing about these ongoing efforts,

The briefing will be conducted by:

Emil Wolanin, Deputy Director, DOT
Hannah Henn, Senior Engineer for Strategic Innovation, DOT
Darren Flusche, Trails Program Supervisor, Parks Department
Kristy Daphnis, Chair, Pedestrian, Bicycle, and Traffic Safety Advisory Committee

Also invited to participate in the meeting to comment and answer Councilmember questions are:

Casey Anderson, Chair, Montgomery County Planning Board
Mike Riley, Director, Parks Department
Andre Futrell, District 3 Engineer, State Highway Administration
Dave Anspacher, Functional Planning & Policy Section, Planning Department

The attachments include:

Letter regarding public space adaptations during the pandemic	©1-2
Attachment A: Open Streets Action Plan	©3-4
Attachment B: DOT Activities	©5-7
Attachment C: DOT Supporting Materials	©8-38
Attachment D: Parks Activities	©39-40
Attachment E: Parks Supporting Materials	©41-89


f:\orlin\fy20\t&e\mdot\traffic engineering\200624tephed-open streets.doc


¹ Key word: #openstreets


MEMORANDUM


June 15, 2020


To: Montgomery County Councilmembers


From: David Anspacher  DA
Montgomery County Planning Department

Hannah Henn 
Montgomery County Department of Transportation

Darren Flusche 
Montgomery County Parks Department

Via: Christopher Conklin, Director 
Montgomery County Department of Transportation

Mike Riley, Director 
Montgomery County Parks Department

Gwen Wright, Director 
Montgomery County Planning Department

Subject: Public Space Adaptations in Response to COVID-19 Crisis

In response to the COVID-19 crisis, Montgomery County agencies are implementing temporary modifications to public spaces – including sidewalks, streets, parkways and parking areas – to meet the evolving needs of our community during the pandemic. These modifications are intended to facilitate physical distancing while enabling people to engage in commerce, travel and outdoor recreation and to support business recovery. Councilmember Riemer requested information on the potential for these modifications, and a joint PHED/T&E meeting is scheduled to discuss this topic on June 24th at 9:30am.

As each agency works to innovate under difficult circumstances and with limited resources during the crisis, the “all hands on deck” approach to adapting our public spaces has led to a collaborative effort between Montgomery Planning, Montgomery Parks, and Montgomery County Department of Transportation (MCDOT). Leadership and staff have coordinated to share

lessons learned, provide feedback and ideas for planning and implementation, and support each other in these uncharted waters.

The approach to physical distancing and business recovery is an iterative and rapidly evolving process. County agencies are piloting innovative approaches to serve today's needs and looking toward the future, making changes to quickly address unexpected issues that arise. Over time these efforts will be modified and expanded as their utility is demonstrated. As always, maintaining access and the safety of the transportation system is a priority.

The following primary initiatives support open streets and are described in more detail in attachments to this document.

- **Open Streets Action Plan:** MCDOT and Montgomery Planning collaboratively developed the Open Streets Action Plan in early May as an initial framework for considering open streets needs, evaluation criteria, and potential solutions in the county. This document provided a foundational approach for MCDOT's "Shared Streets" initiative.
- **Open Parkways:** Montgomery Parks has closed sections of three parkways to motor vehicles to provide additional space for people to go outside, get physical activity, and practice physical distancing, and to relieve pressure on the most crowded trails.
- **Shared Streets:** MCDOT launched the Shared Streets initiative on May 29 and began limiting vehicular access to streets to support outdoor dining and retail activity on June 10. Temporary installation of neighborhood greenways are planned to begin June 15, and a simple permit process for residents to request smaller, temporary block closures should be available that same week.

Attachments

Attachment A: Open Streets Action Plan

Attachment B: Montgomery County Department of Transportation Activities

Attachment C: Montgomery County Department of Transportation Supporting Materials

Attachment D: Montgomery Parks Activities

Attachment E: Montgomery Parks Supporting Materials

Signature: 
David Anspacher (Jun 16, 2020 20:01 EDT)

Email: david.anspacher@montgomeryplanning.org

Open Space Action Plan: A Collaborative Effort by M-NCPPC and MCDOT

Purpose: Identify needs and develop a plan for actions to facilitate social distancing while traveling, exercising / recreating and engaging in commerce in Montgomery County during the COVID-19 crisis and recovery period.

Immediate Considerations

Timeframe: Current period of intense social distancing and potentially repeated future phases.

Question 1: Is there an immediate need to create additional social distancing space?

Recovery Period

Timeframe: As telework decreases and schools reopen on a larger scale.

Question 2: How can Montgomery County support economic recovery and provide sufficient space for walking / bicycling as more people return to the streets and traffic volumes increase?

1. Identify potential problem locations where pedestrian volumes are likely to be high and pedestrian space is limited.
2. Identify priority locations for retail pick up, outdoor restaurant space, social activity.

Question 3: With the potential for a shift away from public transportation due to fears of crowding, how can Montgomery County get people where they need to go safely and without backsliding to the detriment of County mode share goals? (To be paired with other initiatives to support social distancing.)

3. Identify arterial roadways connecting to Downtowns and Town Centers where it is feasible to temporarily repurpose traffic lanes for increased transit frequencies and / or bicycling.

Action Plan

1. Verify/identify needs:
 - a. Define criteria for observation.
 - b. Conduct observations in a variety of activity centers around the county.
 - c. Solicit feedback from Regional Service Centers Directors.
 - d. Engage with the business community.
 - e. Solicit feedback via social media and community partners (i.e. MCPS).
2. Identify potential resources and limitations to address problem areas (i.e. materials, funding, manpower, legal solutions, facilitate partnerships, accelerate existing projects).
3. Examples of potential actions to take once needs and solutions are evaluated and prioritized:
 - a. Transit
 - i. Create temporary bus lanes by repurposing traffic lanes.
 - b. Bicycling and Walking
 - i. Create additional space for walking by repurposing on-street parking, existing lanes, implementing one-way circulation and/or closing streets to through traffic.

- ii. Increase intersection queueing space for pedestrians with temporary curb extensions.
 - iii. Create temporary separated bike lanes by repurposing traffic lanes.
- c. Business
 - i. Create pick-up locations, outdoor dining space and retail queueing space by repurposing on-street parking.
 - ii. Facilitate partnerships, crowd control, sign ups, volunteer support.

Montgomery County Department of Transportation

Shared Streets; An overview of progress and near-term plans.

montgomerycountymd.gov/DOT/sharedstreets

MCDOT announced its Shared Streets initiative on May 29 to support reopening and recovery in Montgomery County.

This document serves as a high-level update on planning and action taken thus far. Content from the webpage, surveys, and recent press releases are attached for further information.

Inclusion and Engagement

The initiative includes opportunities for feedback and engagement by residents and businesses through online surveys, which have been shared in English and in Spanish. There is a survey with questions relevant to residents and a separate survey for local business owners and managers.

As of June 8, nearly 700 responses had been submitted to the resident survey and 16 responses to business survey. MCDOT is in the process of reviewing these initial responses to inform future efforts. There have been few responses to the Spanish survey, so MCDOT is working with community partners to seek more responses from the Spanish-speaking community.

In addition to surveys, there is a dedicated email address for Shared Streets-related questions and suggestions. MCDOT also has engaged extensively with members of local community advocacy groups and is available to discuss Shared Streets with local community organizations.

Collaboration with Local and State Government Agencies

Montgomery Planning has been a supportive partner in developing an Open Streets Action Plan and evaluating Neighborhood Greenways identified in the 2018 Bicycle Master Plan for suitability for temporary implementation.

In addition to closure of County-controlled roadways, MCDOT is working to assist localities and the State Highway Administration in the adjustment of allowable uses of roads outside of County jurisdiction. MCDOT is working to develop comprehensive maps of all known closures to be posted on the Shared Streets website and to post maps in and around closure areas where possible.

In all cases, road closures must be clearly marked and maintained, access maintained for emergency services, and traffic and access disruptions minimized. To achieve that end, MCDOT is also coordinating with other government agencies such as the Montgomery County Police Department and Montgomery County Fire and Rescue Services.

Actions to support outdoor dining have been a multi-agency effort led by the Office of the County Executive. In addition to MCDOT, the “Outdoor Dining Taskforce” includes the Department of Permitting Services, Alcohol and Beverage Services, Regional Service Centers, Office of the County Attorney, and others.

A Three-Pronged Approach

Streets Closures to Vehicles to Support Outdoor/Curbside Business Activity

As Montgomery County prepared to enter Phase 1 of reopening, it became apparent that many local restaurants and retail businesses would be more reliant on curbside access and space for outdoor dining as they reopen and expand services. MCDOT is collaborating with representatives from local activity centers (Regional Service Center Directors, Urban Districts, and any groups of local businesses who reach out for assistance) to facilitate the closure of roads to vehicles where feasible to support economic recovery.

Neighborhood Greenways Temporary Implementation

MCDOT announced on June 9 the first plans to implement temporary neighborhood greenways in response to COVID-19. The first location launched in Aspen Hill on June 15, to be followed soon by Grove Street in Silver Spring.

Pending the success of and feedback from these initial locations, MCDOT intends to add more Neighborhood Greenway Shared Streets across the County. Locations will be selected based on criteria that includes access for Equity Emphasis Areas, connections between residents and activity centers, connections to other trails and parks, lack of existing sidewalk infrastructure, and population density.

Short-Term Block Permits

MCDOT is in the process of modifying the existing online Neighborhood Block Party Permit process to support Shared Streets activity. Planners and engineers are currently evaluating what resources are available to support temporary street closures in response to specific resident requests. The revised permit process will consider resources available to support closures, the number of closures that can happen simultaneously without negative impacts on traffic in other areas, and the appropriate length of time for such closures. It is anticipated that the revised permit process will be announced and available to residents the week of June 15; expect announcements and further details soon.

Comprehensive List of Completed and Planned Shared Streets

Confirmed/Completed Activity as of June 16

- Continued availability and expansion of Curbside Pickup/Delivery Zones first implemented on March 17 and currently in place in 42 locations in the Pike and Rose area of North Bethesda, Silver Spring, Bethesda, and Wheaton.
- Continuation of Arlington Road weekend closures to connect Downtown Bethesda to Montgomery Parks' Little Falls Parkway closure.
- Downtown Bethesda street closures to support "Bethesda Streeterly" outdoor dining (began June 10).
- Facilitation of Streetdine on Georgia Avenue in Silver Spring (began June 12)
- Temporary neighborhood greenway in Aspen Hill (began June 15).
- Wheaton street closures to support outdoor dining (scheduled to begin June 19)
- Continued promotion of feedback/need survey for residents and businesses.
- MCDOT active member of County Executive's Outdoor Dining Taskforce.

Coming Soon

- Temporary neighborhood greenway on Grove Street in Silver Spring.
- Street closure planning to support outdoor dining and retail in Germantown.
- Revised Block Party Permit Process to support Shared Streets in neighborhoods across the County.

Related Activity by Other Jurisdictions

- City of Rockville closure of Gibbs Street and expansion of Rockville Town Center (began June 5).
- State Highway Administration closed portions of Georgia Avenue to support business activity in Silver Spring (began June 12).
- Takoma Park closures in area normally occupied for farmer's market.
- Garrett Park expressed interest.



Press Releases

News » Press Releases » Release

First Neighborhood Greenway 'Shared Streets' to Support Increased Pedestrian and Bicyclist Activity Will be Launched on Monday, June 15, by Montgomery County Department of Transportation

For Immediate Release: Tuesday, June 9, 2020

Two local streets with long term plans to become neighborhood greenways will be transformed by the Montgomery County Department of Transportation (MCDOT) into more friendly roadways for pedestrians and bicyclists. Starting on Monday, June 15, the first Neighborhood Greenway "Shared Streets" will go into effect in Aspen Hill and soon will be followed by a location in Silver Spring. The measures will support residents in the near term during the COVID-19 health crisis and may be expanded to other locations in the County.

A neighborhood greenway typically is a street where the priority is safe movement of bicycles and pedestrians and the fast movement of vehicles is discouraged. Temporary Shared Streets along planned neighborhood greenways will maintain access for emergency vehicles while marking select streets as "local access only" to create more space for pedestrians and bicyclists—and discourage vehicular traffic.

The streets involved in the pilot program will be Holdridge Road (1.2 miles) from Olympic Street to Urbana Drive in Aspen Hill and Grove Street (0.5 miles) from Bonifant Street to Sligo Avenue in Silver Spring.

MCDOT will install signs around the Aspen Hill and Silver Spring Shared Streets informing roadway users and neighbors of the temporary changes. Safety, slower speeds and keeping alert for vulnerable roadway users will be emphasized for drivers. Traffic control devices (such as barrels) will be placed with signage to calm traffic, alert drivers and highlight to pedestrians and cyclists that the roads have been adapted to support safety for all users.

MCDOT will post maps and additional information to the Shared Streets website at montgomerycountymd.gov/DOT/sharedstreets/

The website includes information on streets with limited access to support outdoor dining and curbside pickup zones for restaurants and retail activity.

"We are excited to be able to build off of the neighborhood greenways work our planners and engineers have been developing for some time in order to create immediate relief for our residents seeking space for biking and walking," said MCDOT Director Chris Conklin. "While we continue toward our longer term and more permanent safety improvements, residents have been calling for temporary changes now to support changed transportation patterns and space for physical distancing. I am proud of the work MCDOT's team is doing to respond to resident and business needs in areas that have been hard-hit by COVID-19, and we look forward to implementing these first Neighborhood Greenway Shared Streets as we strive to support safety and recovery in the County."

In addition to public engagement that has already taken place to support long term planning efforts, there is an active survey seeking input from residents and businesses.

If the Shared Streets pilot locations prove successful, MCDOT will select additional locations based on criteria that includes access for Equity Emphasis Areas, connections between residents and activity centers, connections to other trails and parks, lack of existing sidewalk infrastructure and population density.

The Shared Streets concept follows the County's Vision Zero plan to reduce severe injuries and fatalities from traffic-related incidents.

For ongoing updates, follow @MCDOTNow on Twitter or go to the department website at www.montgomerycountymd.gov/mcdot.

For the latest Montgomery County updates during the health crisis, visit the County's COVID-19 website and follow Montgomery County on Facebook @MontgomeryCountyInfo and Twitter @MontgomeryCoMD.

#

Media contact: Hannah Henn, 240-777-8389 Put the "count" in Montgomery County! Be sure to complete the Census online, by phone, or by mail. It's safe, confidential, easy, and important. #2020Census #EveryoneCountsMCMD

Release ID: 20-303

Media Contact: Hannah Henn 240-777-8389



Sign Up for
News Updates

from eSubscription

County News

Press Releases

News » Press Releases » Release

Montgomery County Launches 'Shared Streets' Initiative to Support Safe Outdoor Activity and Speed Economic Recovery

For Immediate Release: Friday, May 29, 2020

The Montgomery County Department of Transportation (MCDOT) has launched its new "Shared Streets" program to support safe, physically distanced activity as the County enters Phase I of recovery from the COVID-19 health crisis. The initiative will involve looking for temporary ways to modify existing uses of County sidewalks, roads, on-street parking and parking lots to provide extra space residents and businesses could use to comply with Centers for Disease Control (CDC) spacing guidelines.

More information can be found at: <https://www.montgomerycountymd.gov/DOT/sharedstreets/>

"I have directed our planners and engineers to think creatively about how we can adjust the use of our streets, sidewalks and parking facilities to best serve today's needs," said MCDOT Director Chris Conklin. "Safe and accessible public spaces are a critical aspect of community health and vibrancy. MCDOT understands that our public rights of way are a key resource for residents and businesses and that the best use of those spaces may shift under changing circumstances. We are launching the Shared Streets initiative to aid the County's recovery."

Under Shared Streets, MCDOT will be testing temporary changes to rights of way and public spaces that could include closing one lane or more to support recreation, using on-street parking for retail or dining activity or opening parking lots for food hall activity. Shared Streets will be one part of the County's overall initiative to support outdoor dining, with more information to come soon with a dedicated website for all government-related resources.

Working with community and government partners, MCDOT will continue to identify priority locations for retail pick up, outdoor restaurant space and social activity, as well as locations where pedestrian volumes are likely to be high and pedestrian space is limited.

One example is underway in Bethesda where the Bethesda Urban Partnership (BUP) intends to close a portion of Woodmont Avenue (Bethesda Avenue to Elm Street) and a portion of Norfolk Avenue (Fairmont to Del Ray). MCDOT has been assisting BUP with the plans. The date of when the closures will be implemented, and the duration of that plan, have not yet been determined.

MCDOT has already implemented some Shared Street changes during the most restrictive phase of social distancing. They include curbside pick-up zones for restaurants and businesses and weekend closures to vehicles on Arlington Road to extend Montgomery Parks' Little Falls Parkway closure to downtown Bethesda.

Other changes will be coming soon across the County. Locations may shift over time because of available resources and changing needs.

MCDOT is soliciting ideas and feedback from residents, business organizations, advocacy groups and others through two online surveys. One is a survey for residents. The other is a survey for owners of businesses.

Specific suggestions or questions also can be sent by email to MCDOT.SharedStreets@montgomerycountymd.gov.

For ongoing updates, follow @MCDOTNow and @MCDOT_Parking on Twitter or go to the department website at www.montgomerycountymd.gov/dot

For the latest updates, visit the County's COVID-19 website and follow Montgomery County on Facebook @MontgomeryCountyInfo and Twitter @MontgomeryCoMD.

#

Put the "count" in Montgomery County! Be sure to complete the Census online, by phone, or by mail. It's safe, confidential, easy, and important. #2020Census #EveryoneCountsMCMD

Release ID: 20-279

Media Contact: Hannah Henn 240-777-8389



Sign Up for
News Updates

from eSubscription

County News

News Releases

Press Releases

News » Press Releases » Release

El Condado de Montgomery Lanza Iniciativa de 'Shared Streets' en apoyo a Actividades al Aire Libre Seguras y a la Recuperación Económica

For Immediate Release: Friday, May 29, 2020

Mientras que el Condado entra a la Fase I de recuperación de la crisis de salud de COVID-19, el Departamento de Transporte del Condado de Montgomery (MCDOT por sus siglas en inglés) lanzó un nuevo programa llamado 'Shared Streets' en apoyo al desarrollo de actividades manteniendo adecuada distancia física entre personas de manera segura. Esta iniciativa incluye la evaluación de medidas temporales para modificar el uso existente de las banquetas, calles, espacios de estacionamiento en las calles y lotes de estacionamiento del Condado para proporcionar espacio adicional para residentes y negocios y al mismo tiempo cumplir con los lineamientos de distanciamiento físico de los Centros para el Control de Enfermedades (CDC) por sus siglas en inglés).

Para más información consulte: <https://www.montgomerycountymd.gov/DOT/sharedstreets/>

"Le he pedido a nuestro equipo de planeación e ingeniería que explore estrategias para modificar de manera creativa el uso de nuestras calles, banquetas y estacionamientos en respuesta a las necesidades actuales," dijo el Director de MCDOT, Chris Conklin. "Tanto la seguridad como la accesibilidad de los espacios públicos son aspectos críticos para la salud y la vitalidad de nuestras comunidades. MCDOT entiende que nuestros espacios públicos son un recurso importante para los residentes y negocios y que el mejor uso de estos espacios debe cambiar en base a las circunstancias actuales. Estamos lanzando el programa 'Shared Streets' para ayudar con la recuperación del Condado."

Bajo 'Shared Streets', MCDOT probará cambios temporales en el derecho de vía y los espacios públicos, los cuales podrían incluir el cierre de uno o más carriles vehiculares para uso recreativo, el uso de espacios de estacionamiento en las calles para actividades de compras y restaurantes o la apertura de lotes de estacionamiento para mercados de comida. 'Shared Streets' es solamente una de varias iniciativas del Condado para apoyar a los restaurantes con áreas de mesas al aire libre. Más información estará disponible

próximamente a través de un sitio web dedicado a todos los recursos que el gobierno pondrá a su disposición.

Trabajando con asociaciones del gobierno y de la comunidad, MCDOT continúa identificando ubicaciones apropiadas para entregas de productos afuera de las tiendas, áreas de mesas al aire libre afuera de los restaurantes y actividades sociales, además de ubicaciones en donde el volumen peatonal es alto y el espacio disponible es limitado.

Uno de los ejemplos en los que estamos trabajando es Bethesda, donde la Sociedad Urbana de Bethesda (BUP por sus siglas en inglés) planean cerrar una porción de Woodmont Avenue (entre Bethesda Avenue y Elm Street) y una porción de Norflok Avenue (entre Fairmont y Del Ray). MCDOT ha estado ayudando al equipo de BUP con estos planes. La fecha en que los cierres serán implementados y la duración de este plan no han sido determinados.

MCDOT ya ha implementado algunos cambios basados en 'Shared Streets' durante la etapa más crítica en que el distanciamiento social fue necesario. Estos incluyeron áreas para entrega de productos para restaurantes y negocios y el cierre al acceso vehicular a Arlington Road los fines de semana para extender el cierre de Little Falls Parkway del Parque Montgomery al centro de Bethesda.

Otros cambios serán implementados próximamente en el Condado. Las ubicaciones podrían cambiar con el tiempo en base a los recursos disponibles y las necesidades del momento.

MCDOT está solicitando ideas y comentarios de residentes, negocios, grupos de apoyo y otras fuentes a través de dos cuestionarios electrónicos, uno para residentes y el otro para dueños y gerentes de negocios.

Favor de enviar comentarios y sugerencias específicas vía correo electrónico a MCDOT.SharedStreets@montgomerycountymd.gov.

Para información actualizada sobre COVID-19 visite el sitio web del Condado County's COVID-19 website y los sitios del Condado de Montgomery en Facebook @MontgomeryCountyInfo y Twitter @MontgomeryCoMD.

#

Contacto de Prensa: Hannah.Henn, 240-777-8389

"Cuenta" en el Condado de Montgomery! Asegúrate de participar en el Censo a través de internet, por teléfono o por correo. Es seguro, confidencial, fácil y muy importante. #2020Census #EveryoneCountsMCMD

Release ID: 20-281

Media Contact: Hannah Henn 240-777-8389



Sign Up for
News Updates



COVID-19 Updates

Reopening Montgomery: Phase 2 & 3 Guidelines



COVID-19 Transportation changes, updates, and resources | Información actual, recursos de transporte y cambios

New! MCDOT Shared Streets



Resident Survey

Cuestionario Residentes

Business Survey

Cuestionario Negocios

Message from MCDOT Director Chris Conklin

Safe and accessible public spaces are a critical aspect of community health and vibrancy. MCDOT understands that our public rights of way are a key resource for residents and businesses, and that the best use of those spaces may shift under changing circumstances.

In response to the COVID-19 health crisis, I have directed our planners and engineers to think creatively about how we can adjust the use of our streets, sidewalks, and parking facilities to best serve today's needs. As a result, we are implementing a new initiative—Shared Streets.



What is the Shared Streets initiative?

MCDOT is looking at ways to modify existing uses of County-controlled sidewalks, roads, on-street parking, and parking lots to provide more space that allows safe, social distanced activity.

What are the goals of Shared Streets?

- Support temporary changes in how we use our public spaces to best meet today's needs.
- Maintain safety and access.
- Take an equitable approach and provide opportunities across the County.
- Support economic recovery while providing space to maintain social distancing requirements.
- Support the Maryland State Highway Administration in applying similar goals to State roads.





How is MCDOT going to implement Shared Streets?

Working with community and government partners, we will identify:

- Priority locations for allowable activity, such as retail pick up, outdoor restaurant space and permitted social activity.
- Locations where pedestrian volumes are likely to be high and pedestrian space is limited.
- Test changes that could include closing one lane or more to support recreation, using on-street parking for retail or dining activity, or opening parking lots for food hall activity. Some streets may be designated local access only to redirect vehicle traffic and provide more space for physical distancing.

Outdoor dining

Are you a restaurant owner seeking specific information on outdoor dining? See the Restaurants and Bars section in "Reopening Montgomery" that includes details on what is required and how the County can help you to serve food outdoors.

When will I see changes?

Some changes have already been made:

- Curbside Pick-Up Zones
- Arlington Road weekend closures to extend Montgomery Parks' Little Falls Parkway closure to downtown Bethesda.
- City of Rockville closed Gibbs Street and expanded Rockville Town Center as of June 5, 2020.
- Closures to support Bethesda Streeterly begin June 10, 2020. See Bethesda Streeterly hours and more.
- Silver Spring closures along Georgia Avenue begin June 12, 2020.
- Coordinating with Wheaton to begin closures weekend of June 12, 2020.

Other changes will be coming soon across the County. Locations may shift over time because of available resources and changing needs.

How can I get involved?

- Fill out our surveys to let us know what is most important to you.
 - Resident survey | Cuestionario Residentes
 - Business survey | Cuestionario Negocios
- Share the survey with your community.
- Send specific suggestions to MCDOT.SharedStreets@montgomerycountymd.gov.
- Connect with your local business organizations, community advocacy groups or other MCDOT partners to provide suggestions or volunteer to support the program.



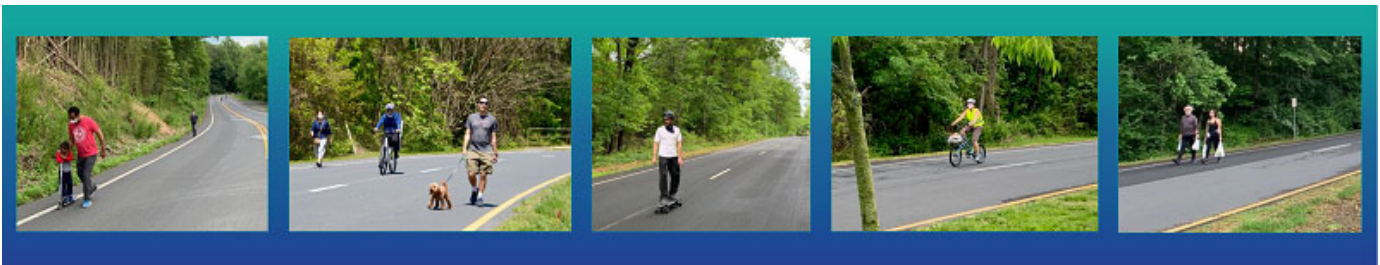


How can I keep up to date with the program as it develops?

- Follow @MCDOTNow on Twitter.
- Subscribe to the Go Montgomery newsletter.

For the media

- Photos of Shared Streets
- Media contact: Hannah.Henn@montgomerycountymd.gov
- Subscribe to MCDOT News.





COVID-19 Updates

Reopening Montgomery: Phase 2 & 3 Guidelines



COVID-19 Transportation changes, updates, and resources | Información actual, recursos de transporte y cambios

New! MCDOT Shared Streets



Resident Survey

This 6-question survey should take approximately 5 minutes to complete.

There are changing needs within our community due to the COVID-19 health crisis. In response, the Montgomery County Department of Transportation (MCDOT) is considering temporary adjustments to the use of streets, sidewalks, and parking facilities to meet today's needs.

These spaces could help link neighborhoods, expand recreation options, and support local businesses as Montgomery County reopens.

As we develop our plans, we want you to weigh in.

Your responses will help us determine how best to serve each neighborhood's needs. We encourage you to share this survey with others.

What is your zip code?

What neighborhood do you live in?

If MCDOT could provide space along local streets, sidewalks, and parking facilities for different, temporary uses what kind of changes would you want to be allowed near your home?

- ☐ Spaces for curbside pickup at stores / restaurants
- ☐ Spaces for restaurant seating
- ☐ Spaces for outdoor retail near stores
- ☐ Walking and bicycling connections to workplaces, recreation, shops and restaurants
- ☐ Spaces to sit, relax, play, or socialize while maintaining distancing
- ☐ Spaces that allow for family-friendly recreation and exercise (activities for kids, skateboarding, frisbee, running)
- ☐ I don't support any changes
- ☐ Other

To provide space for the uses you supported in the last question, what temporary changes would you support near your home? (Note that changes will be temporary, safe, and approved by traffic engineers.)

- ☐ On multi-lane roads: changing a travel lane to a pedestrian / bicycle space.
- ☐ Changing current two-way traffic to one-way.
- ☐ Limiting streets to local vehicular access only.
- ☐ Completely restricting vehicular traffic on streets.
- ☐ I would not support any changes.

What local partners, civic associations, community groups, business organizations, etc. should we partner with for the Shared Streets program?

What suggestions or concerns do you have about adjusting public spaces? How else can we utilize public spaces to help your community?





COVID-19 Updates

Reopening Montgomery: Phase 2 & 3 Guidelines



COVID-19 Transportation changes, updates, and resources | Información actual, recursos de transporte y cambios

New! MCDOT Shared Streets



Cuestionario para residentes

Este cuestionario de 6 preguntas tomará aproximadamente 5 minutos.

Debido a la crisis de salud de COVID-19 es necesario hacer algunos cambios en nuestra comunidad. En respuesta a esta necesidad, el Departamento de Transporte del Condado de Montgomery (MCDOT por sus siglas en inglés) está considerando ajustes temporales para el uso de las calles, banquetas y estacionamientos.

Estos espacios podrían ayudar en la integración de comunidades, el incremento de opciones recreativas, y la reapertura de los negocios del Condado de Montgomery.

Mientras desarrollamos nuestros planes de acción, queremos solicitar su opinión.

Gracias. Sus respuestas nos ayudarán a determinar la mejor forma de ayudar con las necesidades de cada comunidad. Por favor comparta este cuestionario con otras personas.

¿Cuál es su código postal?

¿En qué comunidad vive?

Si MCDOT pudiera proporcionar espacio dedicado temporalmente en las calles locales, banquetas y estacionamientos para diferentes usos, ¿qué tipo de cambios estaría dispuesto a permitir en las áreas cercanas a su casa?

- ☐ Espacio para entrega de productos afuera de las tiendas/restaurantes
- ☐ Espacio para áreas de mesas afuera de los restaurantes
- ☐ Espacio para compra de productos afuera de las tiendas
- ☐ Conexiones entre áreas para ciclistas y peatones con espacios de trabajo, recreativos, tiendas y restaurantes
- ☐ Espacios para sentarse, relajarse, jugar o socializar manteniendo distancia física
- ☐ Espacios que permitan actividades recreativas para familias y áreas de ejercicio (actividades infantiles, áreas para patinar, frisbee, correr)
- ☐ No apoyo ningún cambio
- ☐ Otros

Para proporcionar espacios para los usos anteriores, ¿qué cambios temporales estaría dispuesto a apoyar cerca de su casa? Note que los cambios serán temporales, seguros y aprobados por ingenieros especialistas en tráfico.

- ☐ En calles con múltiples carriles, cambiar un carril a uso peatonal o para ciclistas
- ☐ Cambiar calles de doble sentido a un solo sentido
- ☐ Limitar calles a acceso vehicular local únicamente
- ☐ Prohibir completamente el tráfico vehicular en algunas calles
- ☐ No apoyo ningún cambio

¿Con qué grupos locales como asociaciones cívicas, grupos de la comunidad, grupos de negocios, etc. debemos asociarnos para trabajar en el programa de 'Shared Streets'?

¿Tiene alguna sugerencia al respecto de modificar los espacios públicos? ¿De qué otra manera podemos utilizar los espacios públicos para ayudar a su comunidad?





COVID-19 Updates

Reopening Montgomery: Phase 2 & 3 Guidelines



COVID-19 Transportation changes, updates, and resources | Información actual, recursos de transporte y cambios

New! MCDOT Shared Streets



Business Survey

This 9-question survey should take approximately 5 minutes to complete.

This survey is intended for local business owners and managers. If you are a Montgomery County resident, please complete our resident survey, too.

There are changing needs within our community due to the COVID-19 health crisis. In response, the Montgomery County Department of Transportation (MCDOT) is considering temporary adjustments to the use of streets, sidewalks, and parking facilities to meet today's needs.

These spaces could help support local businesses, link neighborhoods, and expand recreation options as Montgomery County reopens.

As we develop our plans, we want you to weigh in.

Your responses will help us determine how best to serve each neighborhood's needs. We encourage you to share this survey with others.

Please follow us on Twitter @MCDOTNow and on our Shared Streets website at <https://www.montgomerycountymd.gov/dot/sharedstreets/>

What is the zip code for your place of business?

What neighborhood is your business located?

What type of business do you own or manage?

- ☒ Retail
- ☐ Café or Restaurant
- ☐ Fitness Center
- ☐ Personal Grooming
- ☐ General Office
- ☐ Residential Management
- ☐ Healthcare
- ☐ Hospitality (Hotels, Motel)
- ☐ Laboratories
- ☐ Industrial (Manufacturing, Warehousing)
- ☐ Other

If MCDOT could provide space along local streets, sidewalks, and parking facilities for different, temporary uses what kind of changes would you want to be allowed near your business?

- ☐ Spaces for curbside pickup on foot
- ☐ Spaces for curbside pickup by car
- ☐ Spaces for restaurant seating
- ☐ Spaces for outdoor retail
- ☐ Walking and bicycling connections to workplaces, recreation, shops and restaurants
- ☐ Spaces to sit, relax, play, or socialize while maintaining distancing
- ☐ Spaces that allow for family-friendly recreation and exercise (activities for kids, skateboarding, frisbee, running)
- ☐ I don't support any changes
- ☐ Other

To provide space for the uses you supported in the last question, what temporary changes would you support near your business? (Note that changes will be temporary, safe, and approved by traffic engineers. All directly impacted properties will be considered.)

- ☐ Allow the use of parking spaces as additional pedestrian space
- ☐ Allow the use of curbside parking spaces for uses like pickup or outdoor dining
- ☐ Allow the use of travel lanes for uses like curbside pickup, outdoor dining, walking or recreation
- ☐ Restricting streets to local vehicular access and deliveries only
- ☐ Completely restricting vehicular traffic on streets
- ☐ I would not support any changes

Do you control any private parking associated with a business or residential building?

☒ No



COVID-19 Updates

Reopening Montgomery: Phase 2 & 3 Guidelines



COVID-19 Transportation changes, updates, and resources | Información actual, recursos de transporte y cambios

New! MCDOT Shared Streets



Cuestionario para negocios

Este cuestionario de 9 preguntas tomará aproximadamente 5 minutos.

Este cuestionario es para dueños y gerentes de negocios locales. Si es usted residente del Condado de Montgomery, favor de llenar el cuestionario para residentes.

Debido a la crisis de salud de COVID-19 es necesario hacer algunos cambios en nuestra comunidad. En respuesta a esta necesidad, el Departamento de Transporte del Condado de Montgomery (MCDOT por sus siglas en inglés) está considerando ajustes temporales para el uso de las calles, banquetas y estacionamientos.

Estos espacios podrían ayudar en la integración de comunidades, el incremento de opciones recreativas, y la reapertura de los negocios del Condado de Montgomery.

Mientras desarrollamos nuestros planes de acción, queremos solicitar su opinión.

Gracias. Sus respuestas nos ayudarán a determinar la mejor forma de ayudar con las necesidades de la comunidad empresarial. Por favor comparta este cuestionario con otras personas.

Para más información consulte @MCDOTNow en Twitter y nuestros sitio web de 'Shared Streets'
<https://www.montgomerycountymd.gov/dot/sharedstreets/>

¿Cuál es el código postal en el que se encuentra su negocio?

¿En qué comunidad se encuentra su negocio?

¿De qué tipo de negocio es propietario o qué tipo de negocio administra?

- ☒ Tienda
- ☐ Café o Restaurante
- ☐ Gimnasio
- ☐ Salón de Belleza o Barbería
- ☐ Oficina
- ☐ Administración de Viviendas
- ☐ Salud
- ☐ Alojamiento (Hoteles, Moteles, Inns)
- ☐ Laboratorio
- ☐ Industria (Fábricas, Bodegas)
- ☐ Otros

Si MCDOT pudiera proporcionar espacio dedicado temporalmente en las calles locales, banquetas y estacionamientos para diferentes usos, ¿qué tipo de cambios estaría dispuesto a permitir en las áreas cercanas a su negocio?

- ☐ Espacio para entrega de productos para peatones
- ☐ Espacio para entrega de productos para conductores
- ☐ Espacio para áreas de mesas afuera de los restaurantes
- ☐ Espacio para compra de productos afuera de las tiendas
- ☐ Conexiones entre áreas para ciclistas y peatones con espacios de trabajo, recreativos, tiendas y restaurantes
- ☐ Espacios para sentarse, relajarse, jugar o socializar manteniendo distancia física
- ☐ Espacios que permitan actividades recreativas para familias y áreas de ejercicio (actividades infantiles, áreas para patinar, frisbee, correr)
- ☐ No apoyo ningún cambio
- ☐ Otros

Para proporcionar espacios para los usos anteriores, ¿qué cambios temporales estaría dispuesto a apoyar cerca de su negocio? Note que los cambios serán temporales, seguros y aprobados por ingenieros especialistas en tráfico. El impacto a todas las propiedades cercanas será considerado.

- ☐ Permitir el uso de lugares de estacionamiento como espacio peatonal adicional
- ☐ Permitir el uso de lugares de estacionamiento junto a los negocios para entrega de productos o para áreas de mesas afuera de los restaurantes
- ☐ Permitir el uso parcial de calles para entrega de productos, áreas de mesas o usos recreativos
- ☐ Limitar calles a acceso vehicular y entregas locales únicamente
- ☐ Prohibir completamente el tráfico vehicular en algunas calles
- ☐ No apoyo ningún cambio



COVID-19 Transportation changes, updates, and resources | Información actual, recursos de transporte y cambios
New! MCDOT Shared Streets

Press Releases - Department of Transportation

[MCDOT Home](#) » [Press Releases](#) » [Release](#)

First Neighborhood Greenway ‘Shared Streets’ to Support Increased Pedestrian and Bicyclist Activity Will be Launched on Monday, June 15, by Montgomery County Department of Transportation

For Immediate Release: Wednesday, June 10, 2020



Two local streets with long term plans to become neighborhood greenways will be transformed by the Montgomery County Department of Transportation (MCDOT) into more friendly roadways for pedestrians and bicyclists. Starting on Monday, June 15, the first Neighborhood Greenway “Shared Streets” will go into effect in Aspen Hill and soon will be followed by a location in Silver Spring. The measures will support residents in the near term during the COVID-19 health crisis and may be expanded to other locations in the County.

A neighborhood greenway typically is a street where the priority is safe movement of bicycles and pedestrians and the fast movement of vehicles is discouraged. Temporary Shared Streets along planned neighborhood greenways will maintain access for emergency vehicles while marking select streets as “local access only” to create more space for pedestrians and bicyclists—and discourage vehicular traffic.

The streets involved in the pilot program will be Holdridge Road (1.2 miles) from Olympic Street to Urbana Drive in Aspen Hill and Grove Street (0.5 miles) from Bonifant Street to Sligo Avenue in Silver Spring.

MCDOT will install signs around the Aspen Hill and Silver Spring Shared Streets informing roadway users and neighbors of the temporary changes. Safety, slower speeds and keeping alert for vulnerable roadway users will be emphasized for drivers. Traffic control devices (such as barrels) will be placed with signage to calm traffic, alert drivers and highlight to pedestrians and cyclists that the roads have been adapted to support safety for all users.

MCDOT will post maps and additional information to the Shared Streets website at montgomerycountymd.gov/DOT/sharedstreets

The website includes information on streets with limited access to support outdoor dining and curbside pickup zones for restaurants and retail activity.

"We are excited to be able to build off of the neighborhood greenways work our planners and engineers have been developing for some time in order to create immediate relief for our residents seeking space for biking and walking," said MCDOT Director Chris Conklin. "While we continue toward our longer term and more permanent safety improvements, residents have been calling for temporary changes now to support changed transportation patterns and space for physical distancing. I am proud of the work MCDOT's team is doing to respond to resident and business needs in areas that have been hard-hit by COVID-19, and we look forward to implementing these first Neighborhood Greenway Shared Streets as we strive to support safety and recovery in the County."

In addition to public engagement that has already taken place to support long term planning efforts, there is an active survey seeking input from residents and businesses.

If the Shared Streets pilot locations prove successful, MCDOT will select additional locations based on criteria that includes access for Equity Emphasis Areas, connections between residents and activity centers, connections to other trails and parks, lack of existing sidewalk infrastructure and population density.

The Shared Streets concept follows the County's Vision Zero plan to reduce severe injuries and fatalities from traffic-related incidents.

For ongoing updates, follow @MCDOTNow on Twitter, visit the department website at www.montgomerycountymd.gov/dot, subscribe to MCDOT news releases or subscribe to MCDOT's Go Montgomery! biweekly newsletter. For other transportation updates, visit MCDOT's transportation resource page for COVID-19.

For the latest Montgomery County updates during the health crisis, visit the County's COVID-19 website and follow Montgomery County on Facebook @MontgomeryCountyInfo and Twitter @MontgomeryCoMD.

Put the "count" in Montgomery County! Be sure to complete the Census online, by phone, or by mail. It's safe, confidential, easy, and important. #2020Census #EveryoneCountsMCMD

Release ID: 20-116

Media Contact: Hannah Henn 240-777-8389



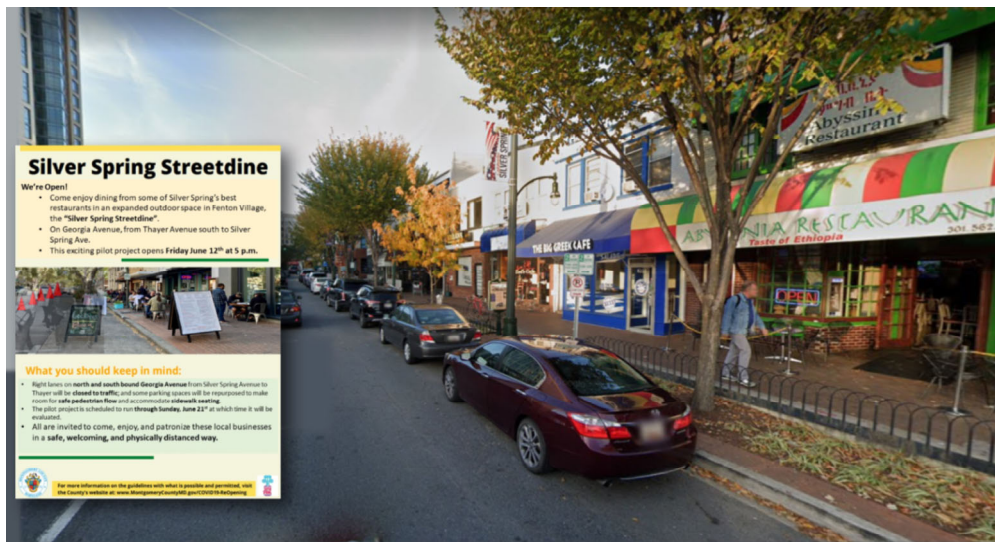
COVID-19 Transportation changes, updates, and resources | Información actual, recursos de transporte y cambios
New! MCDOT Shared Streets

Press Releases - Department of Transportation

[MCDOT Home](#) » [Press Releases](#) » [Release](#)

Silver Spring Restaurants on Georgia Avenue to Offer Dining in Expanded Outdoor Space as 'Streetdine' Starts TODAY, Friday, June 12

For Immediate Release: Friday, June 12, 2020



Many restaurants in Silver Spring's 'restaurant row' along the Fenton Village area of Georgia Avenue will serve patrons at tables in expanded outdoor space starting at 5 p.m. TODAY, Friday, June 12, in an innovative "Streetdine" pilot project to welcome socially distanced dining. The north bound right lanes of Georgia Avenue will be temporarily closed for Streetdine and the parking lane will serve as the primary pedestrian flow to accommodate the expanded seating on the sidewalk.

Under Phase 1 of the reopening guidelines issued by County Executive Marc Elrich, restaurants and establishments that sell food and beverages for on-site consumption are permitted to serve customers in outdoor seating areas.

Some restaurants will be serving meals to the outdoor tables. Others will have diners order takeout meals and then offer them table space to enjoy those meals.

Georgia Avenue Streetdine is a collaborative program organized by County Council Vice President Tom Hucker, the Maryland Department of Transportation State Highway Administration, the Montgomery County Department of Transportation (MCDOT), the Silver Spring Regional Services Office and the Silver Spring Urban District. They have been working with and local business owners to ensure a safe outdoor eating environment on Georgia Avenue from Silver Spring Avenue to Thayer Avenue.

The Streetdine setup will encourage socially distanced strolls before selecting a place to dine. In many cases, reservations are encouraged.

In addition to the Georgia Avenue restaurants open for Streetdine, other restaurants in the downtown Silver Spring area will take advantage of the Phase I reopening guidelines to also offer outside dining.

A complete list of Silver Spring restaurants that are open for outside dining and those that are currently open only for pickup and delivery is available at silverspringdowntown.com

The “Shared Streets” initiative of MCDOT is looking at ways to modify existing uses of County-controlled sidewalks, roads, on-street parking and parking lots to provide more space that allows safe, social distanced activity. More information on the initiative is available at montgomerycountymd.gov/DOT/sharedstreets.

For updates, follow @MCDOTNow on Twitter, visit the department website at www.montgomerycountymd.gov/dot, subscribe to MCDOT news releases or subscribe to MCDOT’s Go Montgomery! biweekly newsletter. For other transportation updates, visit MCDOT’s transportation resource page for COVID-19.

For the latest Montgomery County updates during the health crisis, visit the County’s COVID-19 website and follow Montgomery County on Facebook @MontgomeryCountyInfo and Twitter @MontgomeryCoMD.

Put the “count” in Montgomery County! Be sure to complete the Census online, by phone, or by mail. It’s safe, confidential, easy, and important. #2020Census #EveryoneCountsMCMD *Release ID: 20-122*

Media Contact: Hannah Henn 240-777-8389



Sign up for

Go Montgomery

Ride On Alerts

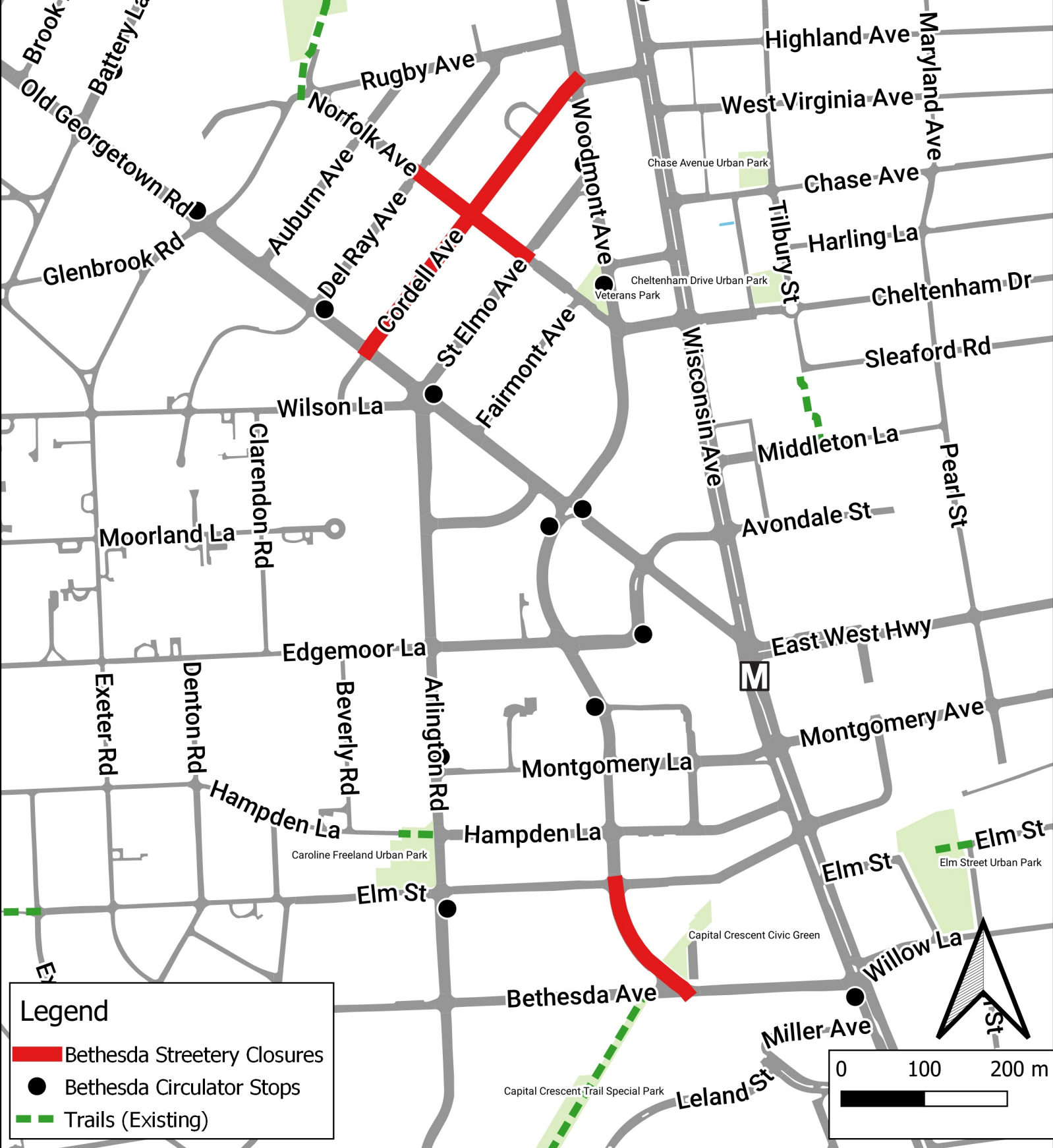
Tweets by @MCDOTNow

MCDOT News Releases

MCDOT Photos

MCDOT Mission and Vision (pdf)

Bethesda Streeterly Closures



www.montgomerycountymd.gov/DOT/sharedstreets/

@MCDOTNow

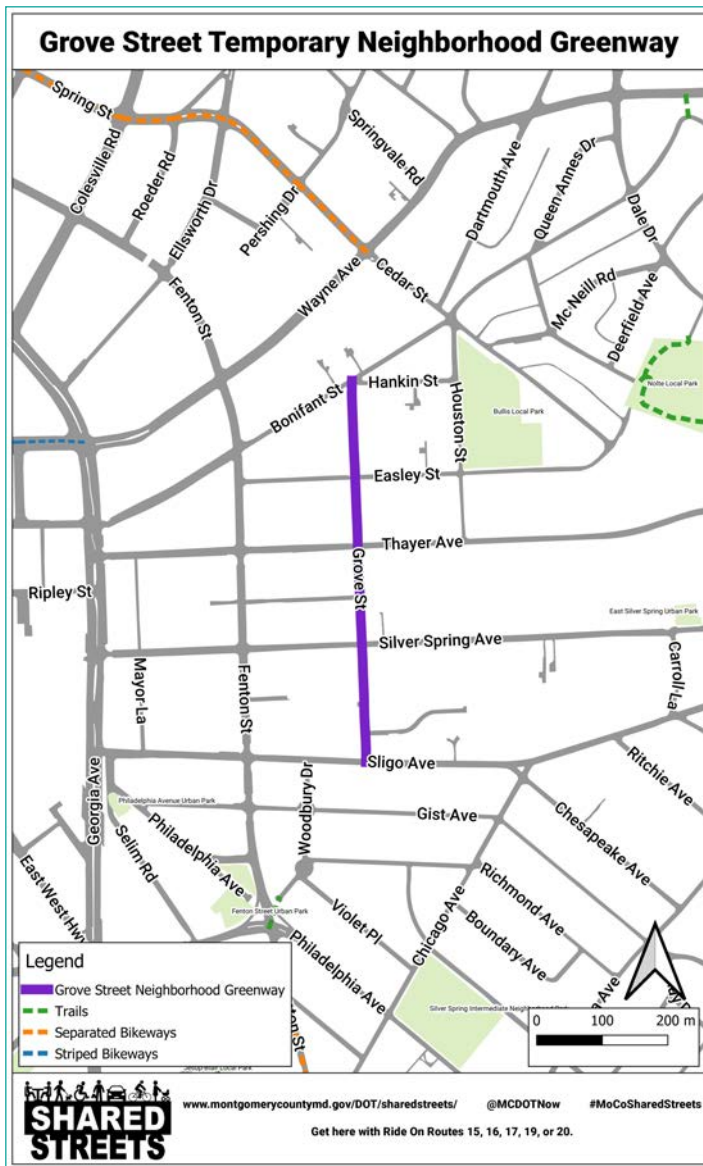
#MoCoSharedStreets

Get here with the Bethesda Circulator or Ride On Routes 29, 30, 32, 33, 34, 36, 42, 42, 47, & 92.



SHARED STREETS

TEMPORARY NEIGHBORHOOD GREENWAY



- Walking, biking, scooting welcome in street
- Local vehicle access only
- Slow your speed
- Look out for each other
- Maintain 6' distance

Learn More:



Follow:

 @MCDOTNow
#MoCoSharedStreets

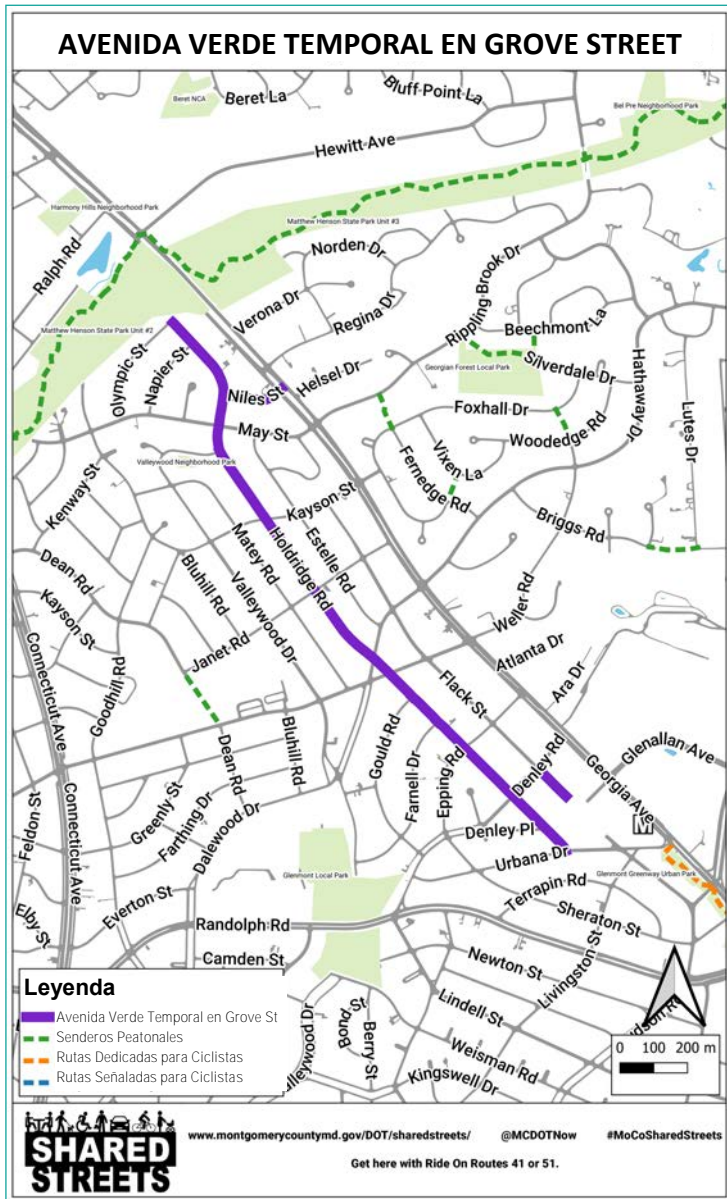
montgomerycountymd.gov/dot/sharedstreets

MCDOT
Montgomery County Department of Transportation

COMING SOON



AVENIDA VERDE TEMPORAL



- Peatones, ciclistas y scooters bienvenidos en la calle
- Acceso vehicular local únicamente
- Reduce tu velocidad
- Cuida de los demás
- Mantén una distancia de 2 metros mínimo

Más Información:



Consulte:



@MCDOTNow

#MoCoSharedStreets

montgomerycountymd.gov/dot/sharedstreets



PROXIMAMENTE



SHARED STREETS

TEMPORARY NEIGHBORHOOD GREENWAY



- Walking, biking, scooting welcome in street
- Local vehicle access only
- Slow your speed
- Look out for each other
- Maintain 6' distance

Learn More:



Follow:

 @MCDOTNow
#MoCoSharedStreets

montgomerycountymd.gov/dot/sharedstreets

MCDOT
Montgomery County Department of Transportation

BEGINS (37) JUNE 15



AVENIDA VERDE TEMPORAL

- Peatones, ciclistas y scooters bienvenidos en la calle
- Acceso vehicular local únicamente
- Reduce tu velocidad
- Cuida de los demás
- Mantén una distancia de 2 metros mínimo

Más Información:

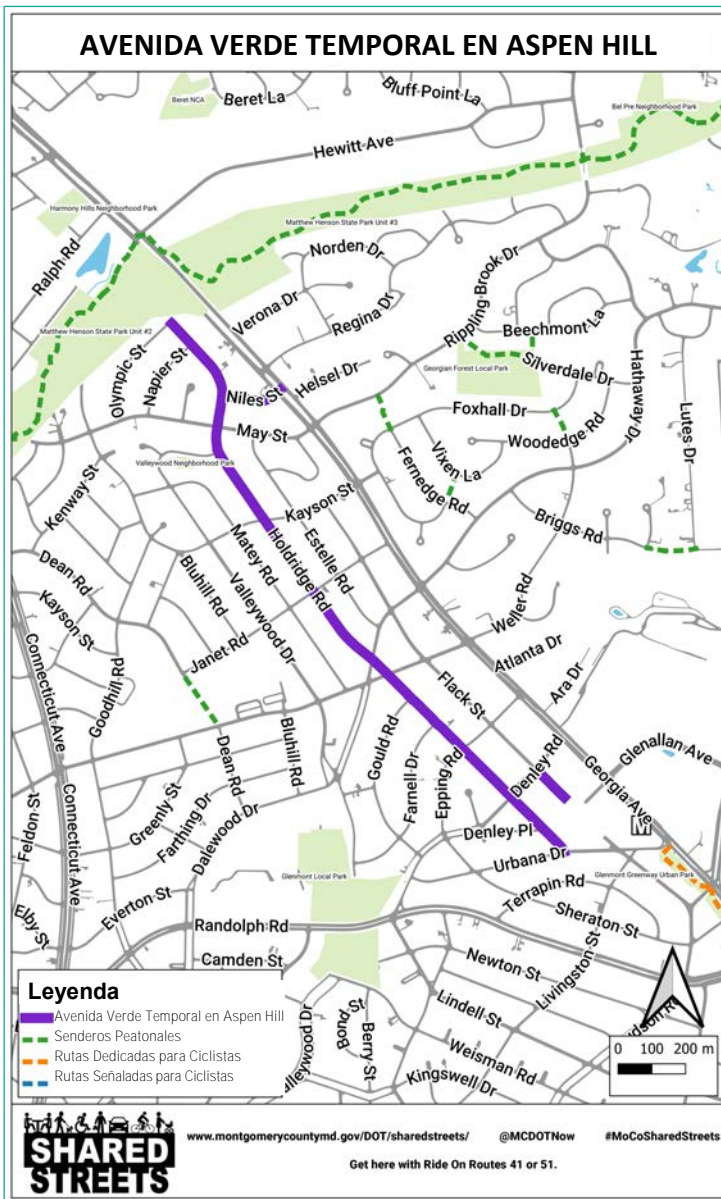


Consulte:



@MCDOTNow

#MoCoSharedStreets



montgomerycountymd.gov/dot/sharedstreets



COMIENZA EL ⁽³⁸⁾ 15 DE JUNIO

Montgomery Parks Open Parkways

The attached presentation (Attachment E) describes the status of the Montgomery Parks Open Parkway initiative to date. This brief narrative to accompanies the slides.

Subsequent to the issuance of Governor Hogan's Stay at Home order, the Parks department noted a significant increase in park visitation and trail usage. Slide 4 shows the increase in trail volumes, using the Capital Crescent Trail as an example, showing key dates related to COVID-19 and weather variations. In fact, we saw a 40 percent increase in use of the Capital Crescent Trail between February, March, and April 2019 and those same months in 2020 (slide 5). On one Sunday in March, nearly 4,000 people used the trail (slide 6). Other trails, such as Rock Creek Trail, saw high volumes as well (slide 7).

In response to these findings, Parks implemented a plan for Open Parkways that would prohibit motor vehicle traffic and open the roadway to bicyclists and pedestrians to provide additional space for people to be outside, get some exercise, and practice physical distancing during the COVID-19 pandemic. The initiative would also address concerns about the high levels of use on the Capital Crescent Trail, Sligo Creek Trail, and Rock Creek Trail (slide 8).

First, Parks expanded the existing Sunday closures on Sligo Creek Parkway from one day to three days, Friday through Sunday, and added an additional northern segment from Forest Glen Road to University. Next, the Open Parkways were expanded to Beach Drive and Little Falls Parkway. In addition to the Friday through Sunday period, the Parkways were opened for pedestrians and bicyclists on Memorial Day. (See segment locations on slide 9. Slides 10, 11, and 12 show photos of each parkway.)

The planning and coordination of the Open Parkways initiative has been a team effort with leadership from the Planning Board and Parks Director and significant staff time from the Park Planning & Stewardship Division (PPSD), Southern Park Operations, Park Police, Park Development Division (PDD), Public Affairs & Community Partnerships (PACP), Facilities Management, and the Exhibit Shop. Parks coordinated closely with Montgomery County Department of Transportation (MCDOT) on their Arlington Road Open Street segment. (The list of partners is on slide 13 and Parks Director Mike Riley is shown enjoying Little Falls Parkway on slide 14.)

The planning effort involved selecting segment extents to minimize affecting neighbors with no other outlet from their homes (slide 16), preserving access to public parking areas (slide 17), identifying barrier placements where there are no gates (slides 18, 19, 20), choosing locations for signs (slide 21, signs shown on slides 22 and 23), and identifying counter locations (slide 24).

To gauge trail and parkway use, Parks invested in 12 TRAFx infrared counters. They were placed at 6 locations to monitor use on both the parkway and an adjacent trail location to capture use at certain points along the entire trail/parkway corridor (slide 26). In May, parkway use during the closures exceeded 40,000 users on Beach Drive, 30,000 users on Little Falls Parkway, and 10,000 users on Sligo Creek Parkway (slide 27). The example of Memorial Day weekend on slide 28 shows that use is correlated with day of the week (i.e., Fridays are lower than Saturday and Sundays) and weather (i.e., cooler temperatures and rain depress use). Slides 29 through 32 compare a parkway segment with its corresponding trail location. In some locations, a majority of users used the parkway (Beach Drive, Sligo

@ Dennis) and at other locations majority of users remained on the trail (Capital Crescent Trail, Sligo @ Piney Branch). In all locations, the parkways provide space for thousands of users over the course of a weekend. Slide 33 shows counts from the last weekend in May.

The counts have confirmed that while weather affects usage, the Open Parkway have provided additional space for tens of thousands of users so far. Where the Open Parkway is consistently visible from the trail, parkway use increases. Volumes across locations vary but tend to trend together based on day of the week and weather.

Parks has learned a significant amount during the initial weeks and months of the Open Parkway, including the need for more messaging on trails to direct trail users to Parkway closures and encourage physical distancing, the need for more room for physical distancing at crossings, the need for adjustments to signs and sign placement, and the need for welcome banners describing in English and Spanish the reason for the road closures (slide 35).

Parks is undertaking a series of steps to improve the Open Parkway experience for users, including spray painting stencils to encourage physical distancing (slides 36, 37, and 38) and modifying gates to allow users of all abilities to pass through without walking or biking on grass. Slide 39 through 46 show the previous condition, an interim condition, and an improved condition for gates at Connecticut Ave/Beach Drive and at Old Carroll Ave.

Parks will continue to make improvements to its Open Parkway and looks forward to the future of the initiative.

Montgomery Parks Open Parkways

Darren Flusche

Trails Master Planner & Trails Program Supervisor

Darren.Flusche@montgomeryparks.org

Office: 301.495.2475

Open Parkway Update

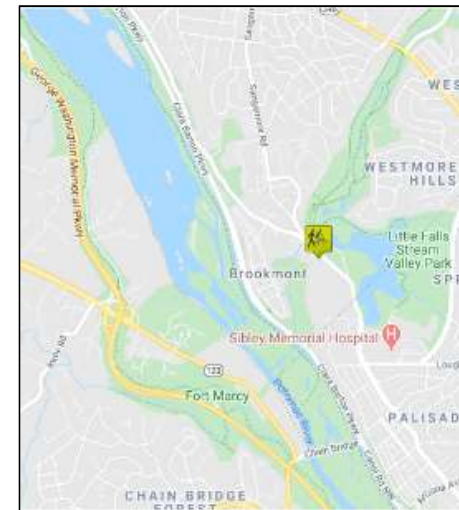
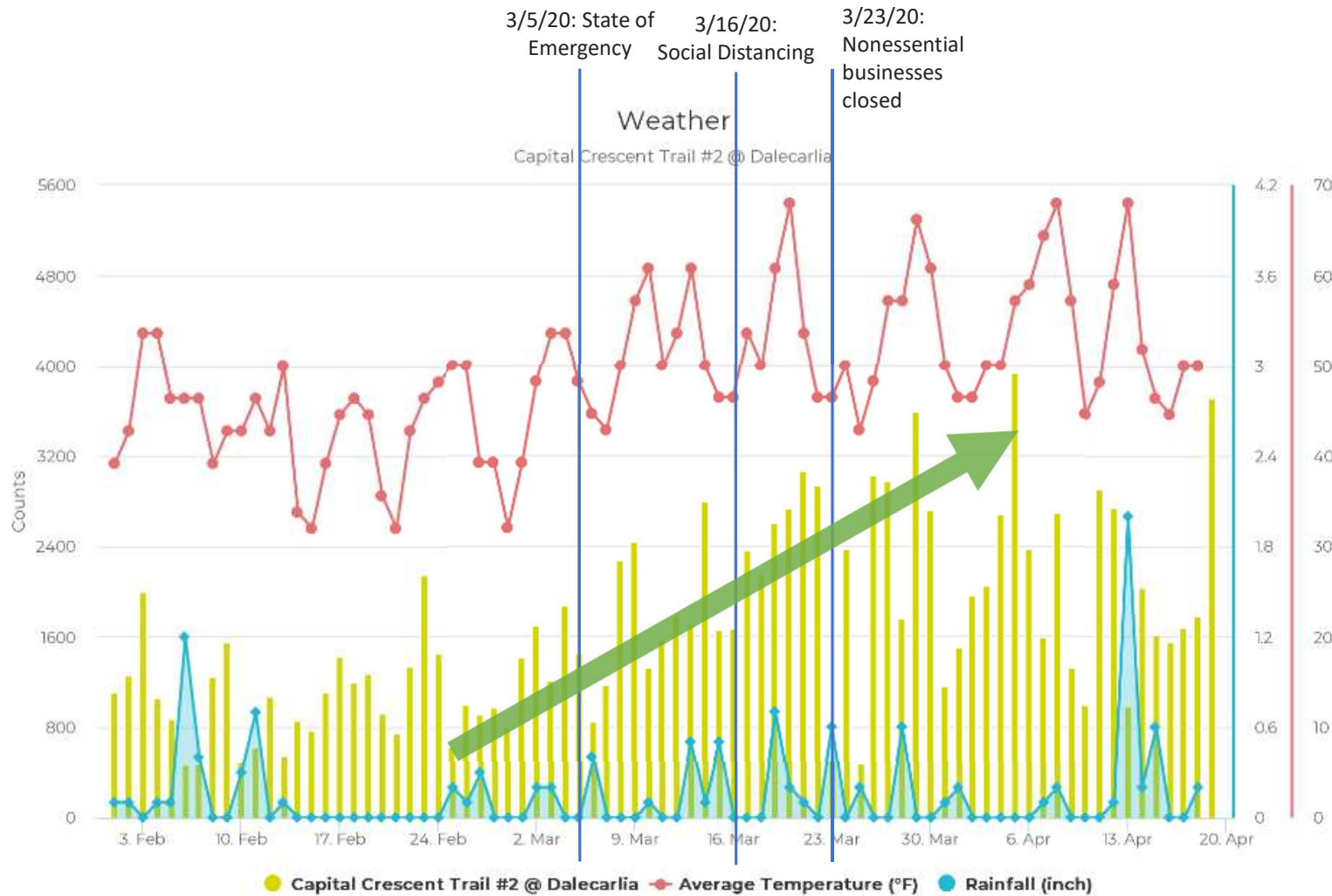
- Introduction
- Locations & Duration
- Counts
- Lessons & Adaptations
 - Stencils
 - Gates
- What's Next



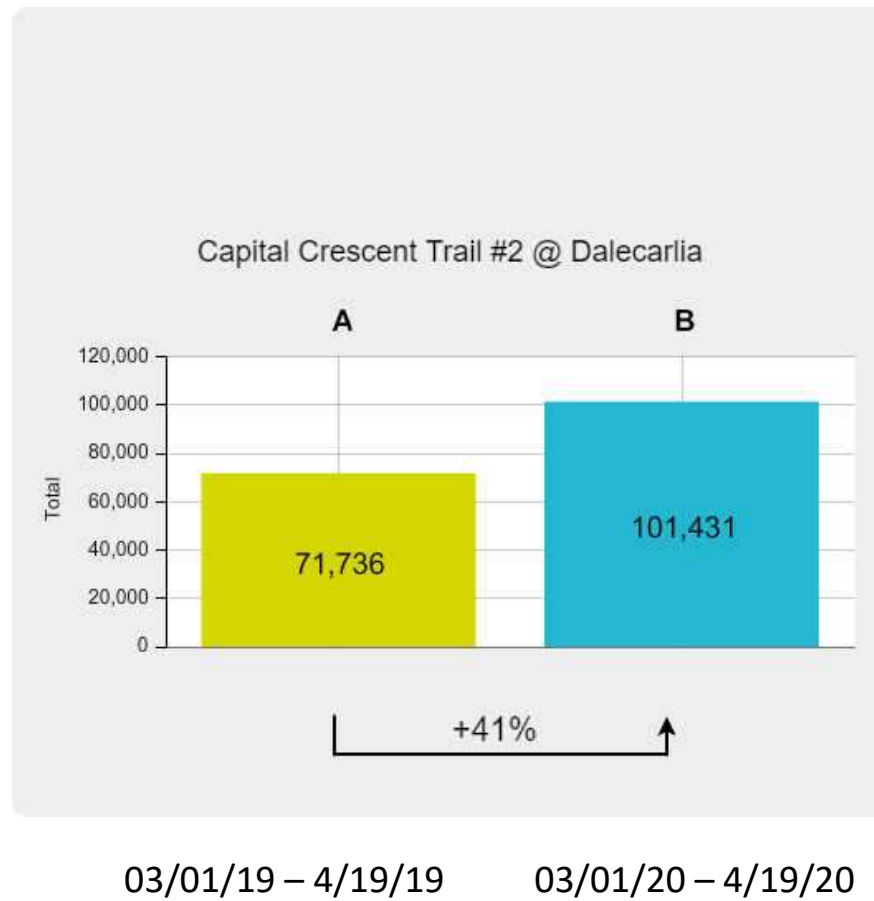
Introduction



Eco-Counter: Capital Crescent Trail #2 @ Dalecarlia



2019 compared to 2020



Capital Crescent Trail #2 @Dalecarlia Tunnel

Day	Daily Total	Peak Hour	Peak Hour Volume	Peak 15 min Volume	
Tuesday, 03/31/20	1,161	4pm	125	44 users (3:30pm)	
Wednesday, 4/01/20	1,506	6pm	255	84 users (6pm)	
Thursday, 4/02/20	1,965	5pm	229	71 users (5:45pm)	
Friday, 04/03/20	2,046	4pm	285	85 users (5:15pm)	
Saturday, 04/04/20	2,681	2pm	316	92 users (3:15pm)	
Sunday, 04/05/20	3,934	3pm	529	158 users (3:30pm)	10 users/min
Monday, 04/06/20	2,380	6pm	307	88 users (6:30pm)	
Tuesday, 04/07/20	1,590	2pm	176	52 users (2:45pm)	
Wednesday, 04/08/20	2,690	5pm	369	104 users (6pm)	
Thursday, 04/09/20	1,325	5pm	149	56 users (5:30)	
Friday, 04/10/20	994	4pm	106	34 users (4:45)	
Saturday, 04/11/20	2,910	2pm	368	111 users (2:30)	
Sunday, 04/12/20	2,746	3pm	419	128 users (3:15)	8.5 users/min
Monday, 04/13/20	986	6pm	246	65 users (6:30)	
Tuesday, 04/14/20	2,038	4pm	243	76 users (5:45)	
Wednesday, 04/15/20	1,619	5pm	223	71 users (6:15)	6

Rock Creek Trail #1

@Beach Drive and Wildwood

Day	Daily Total	Peak Hour	Peak Hour Volume	Peak 15 min Volume	
Tuesday, 03/31/20	528	5pm	100	39 users (4:45pm)	
Wednesday, 4/01/20	1,041	5pm	172	50 users (5:45)	
Thursday, 4/02/20	1,272	5pm	177	52 users (5:30)	
Friday, 04/03/20	1,305	6pm	183	55 users (6pm)	
Saturday, 04/04/20	1,507	3pm	204	61 users (2:15pm)	
Sunday, 04/05/20	2,016	3pm	282	91 users (3:30pm)	6 users/min
Monday, 04/06/20	1,477	4pm	216	64 users (6:30pm)	
Tuesday, 04/07/20	976	1pm	135	50 users (1:00pm)	
Wednesday, 04/08/20	1,416	4pm	205	65 users (4:30pm)	
Thursday, 04/09/20	758	11am	95	34 users (11:15am)	
Friday, 04/10/20	599	4pm	70	23 users (5:45pm)	
Saturday, 04/11/20	1,642	3pm	203	60 users (4:00pm)	
Sunday, 04/12/20	1,418	4pm	219	70 users (4:45pm)	7

Purpose of Open Parkways

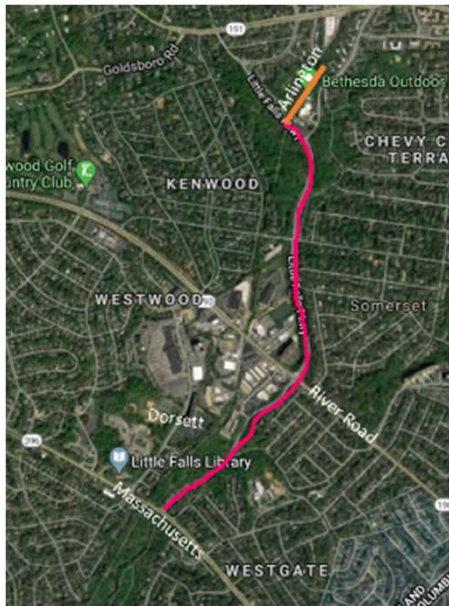


- Provide additional space for people to get outside and practice physical distancing during COVID-19
- Relieve pressure on our most used trails
 - Capital Crescent Trail
 - Sligo Creek Trail
 - Rock Creek Trail

Locations & Duration

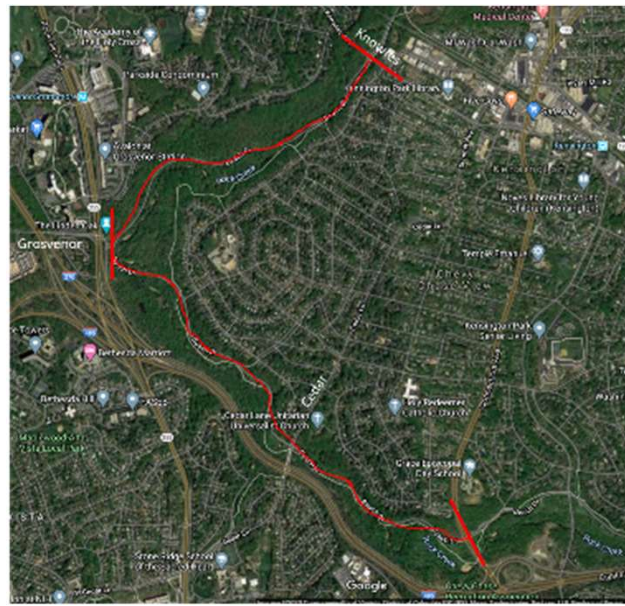
Little Falls Parkway

Massachusetts Ave. to
Arlington Rd. (1.3 miles)
Continues on Arlington Rd



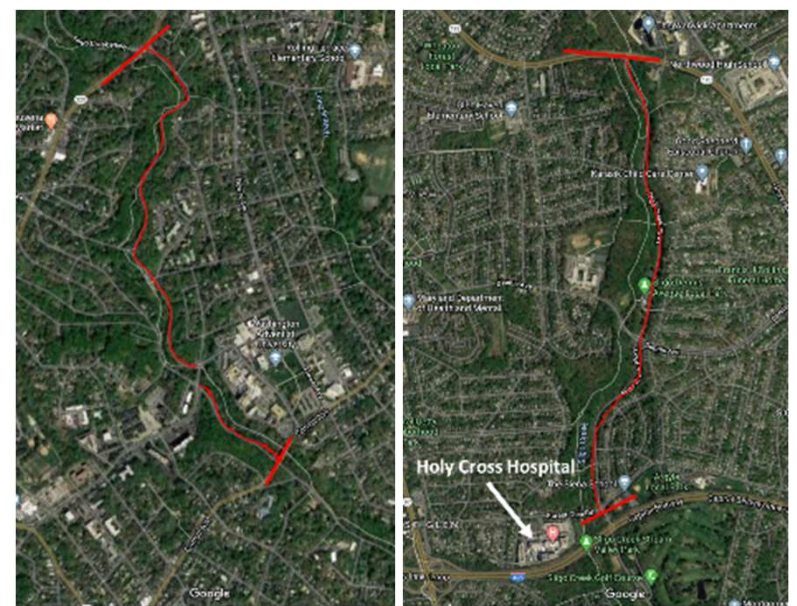
Beach Drive

Connecticut Avenue to
Knowles Avenue
(2.7 miles)



Sligo Creek Parkway

Old Carroll Avenue to Piney Branch Road
Forest Glen Road to University Boulevard
(2.6 miles)



Southern Section

Northern Section

Friday 9 a.m. through Sunday 6 p.m.

Was also open for pedestrians and bicyclists on Memorial Day.









Team Effort

- Park & Planning Board
- Park Director & Deputy Directors
- Park Planning & Stewardship Division (PPSD)
- Southern Park Operations
- Park Police
- Park Development Division (PDD)
- Public Affairs & Community Partnerships (PACP)
- Facilities Management
- Exhibit Shop
- MCDOT – Arlington Road



Little Falls Parkway

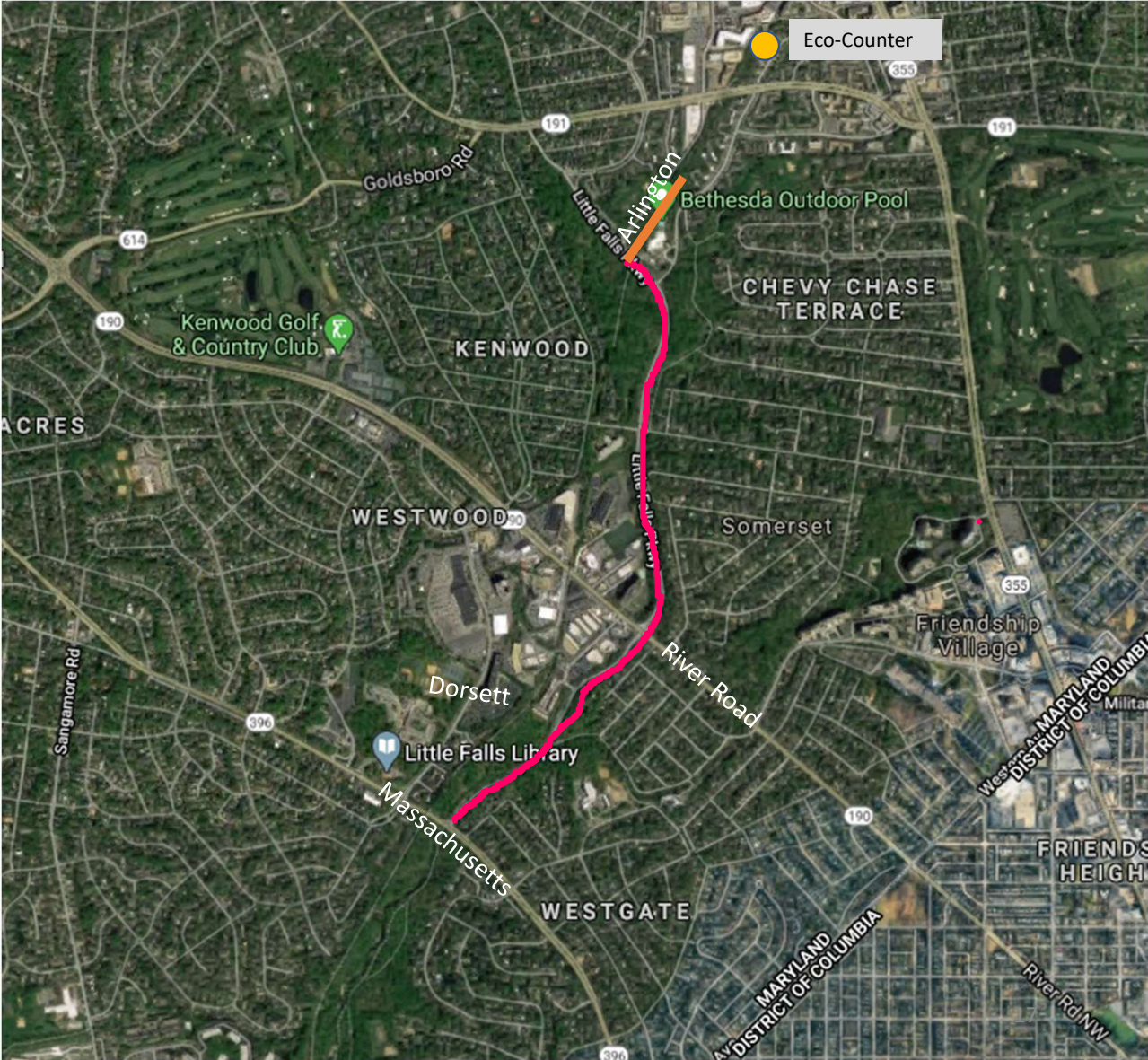




Segment Selection

Little Falls Parkway Closure from
Massachusetts Ave to Arlington.
Friday – Sunday (24 Hours)

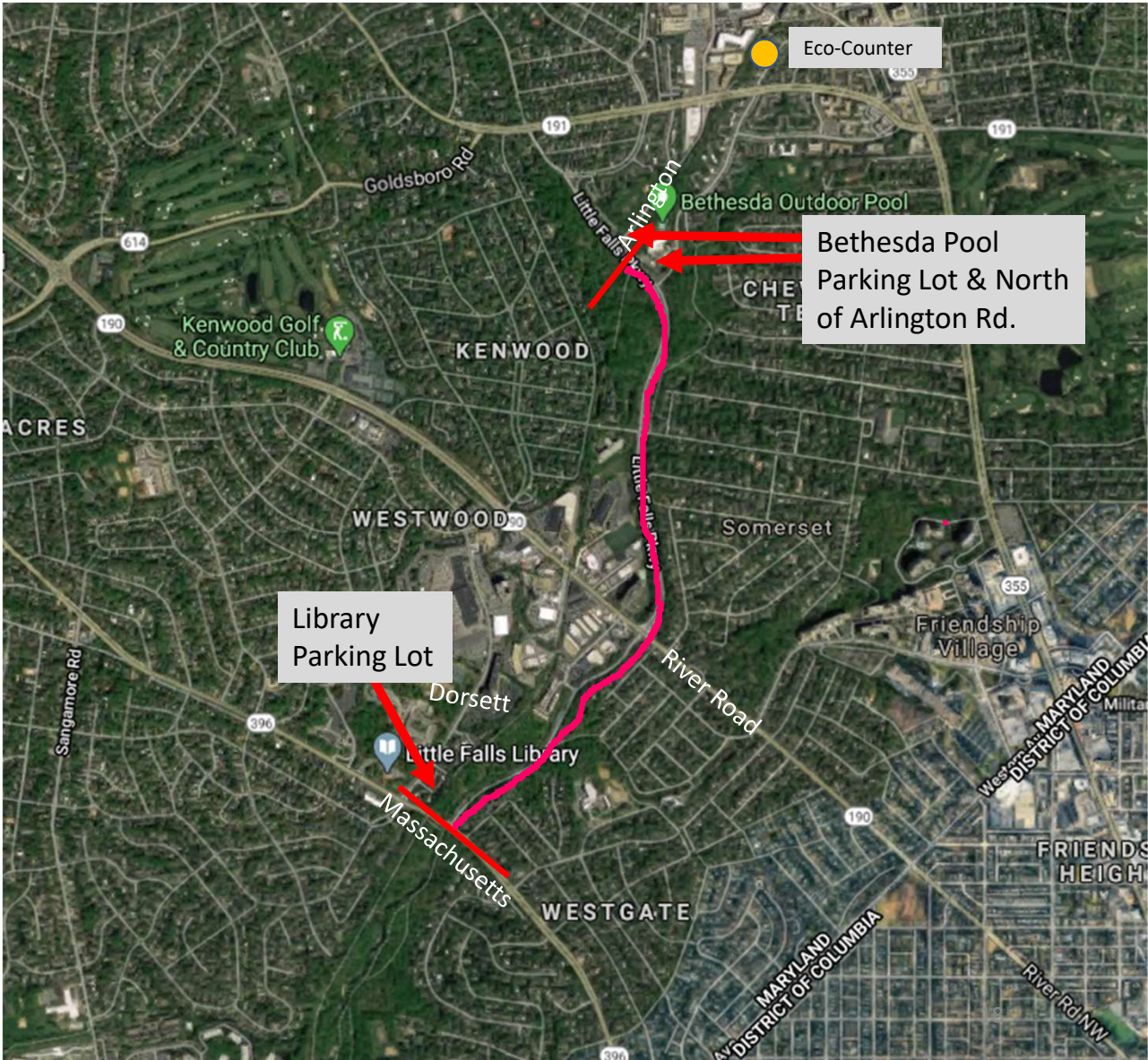
Distance: 1.33 miles
Mass Ave to Bethesda
Outdoor Pool

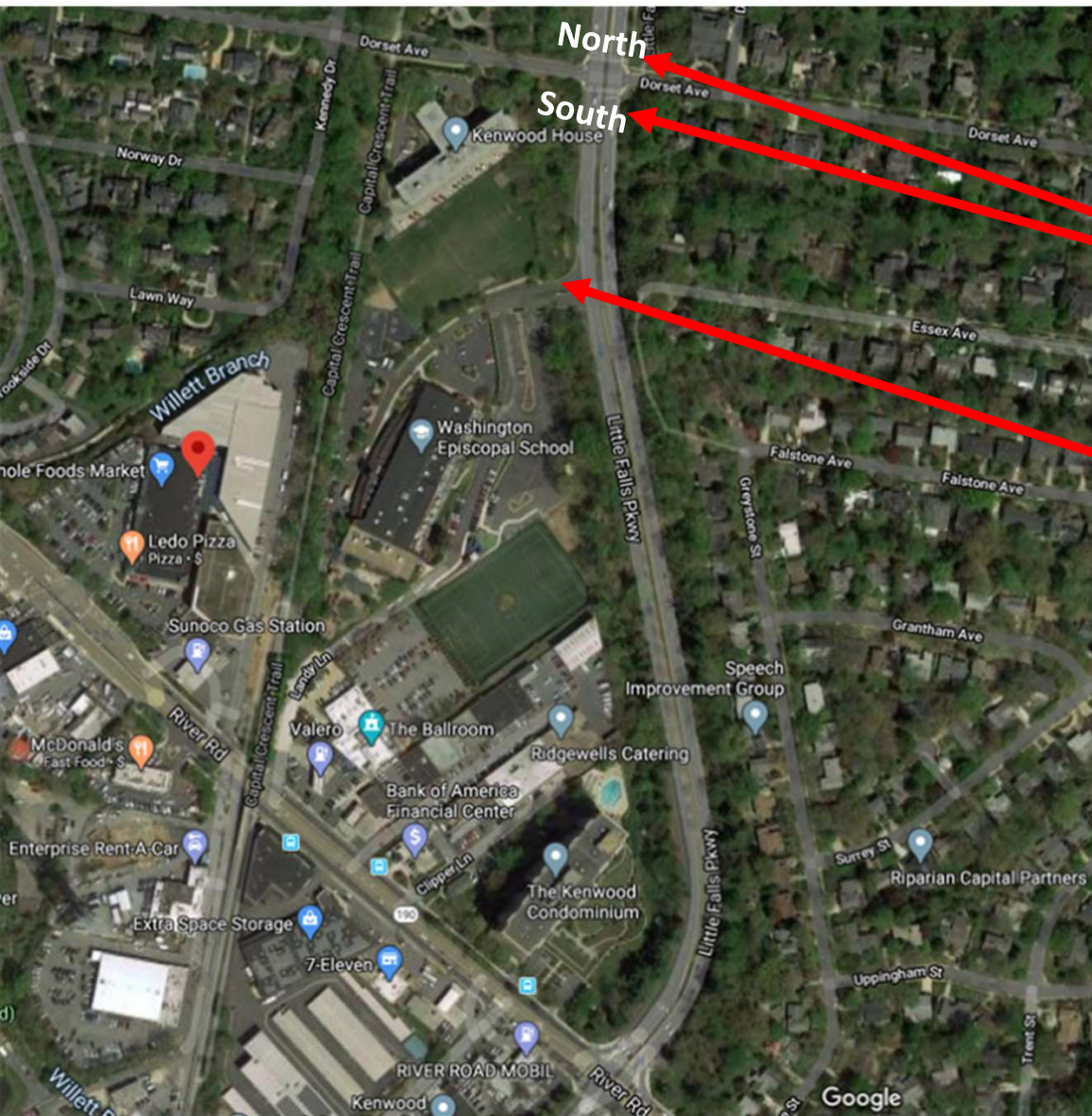


Parking Locations

Little Falls Parkway Closure from
Massachusetts Ave to Arlington.
Friday – Sunday (24 Hours)

Distance: 1.33 miles
Mass Ave to Bethesda
Outdoor Pool





Barrier Locations

Closure of Little Falls Parkway
Dorsett to remain open across
Street width North:

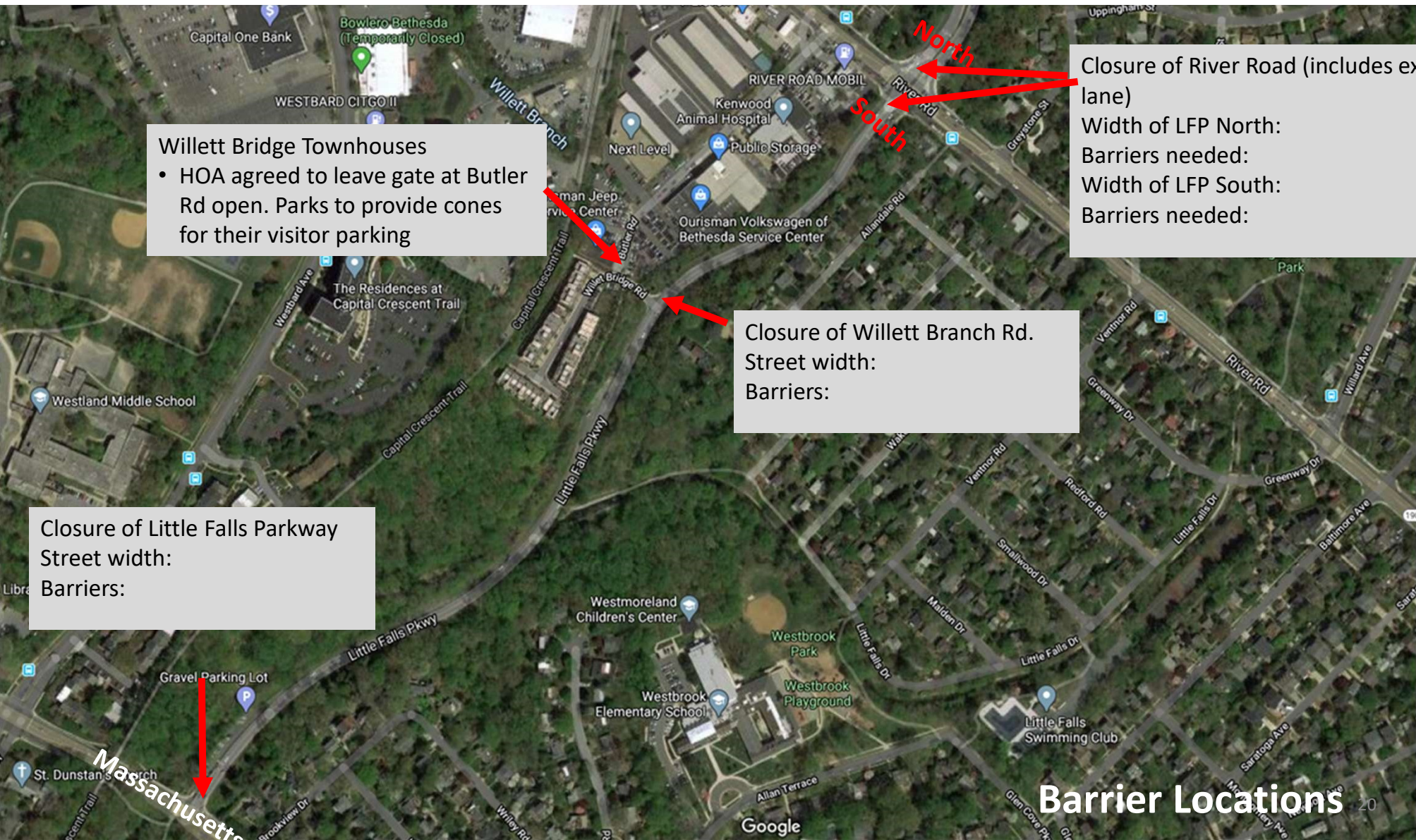
Barriers:

Street with South:

Barriers:

Closure of entrance to Washinton Episcopal School
Street width:

Barriers:



Willett Bridge Townhouses

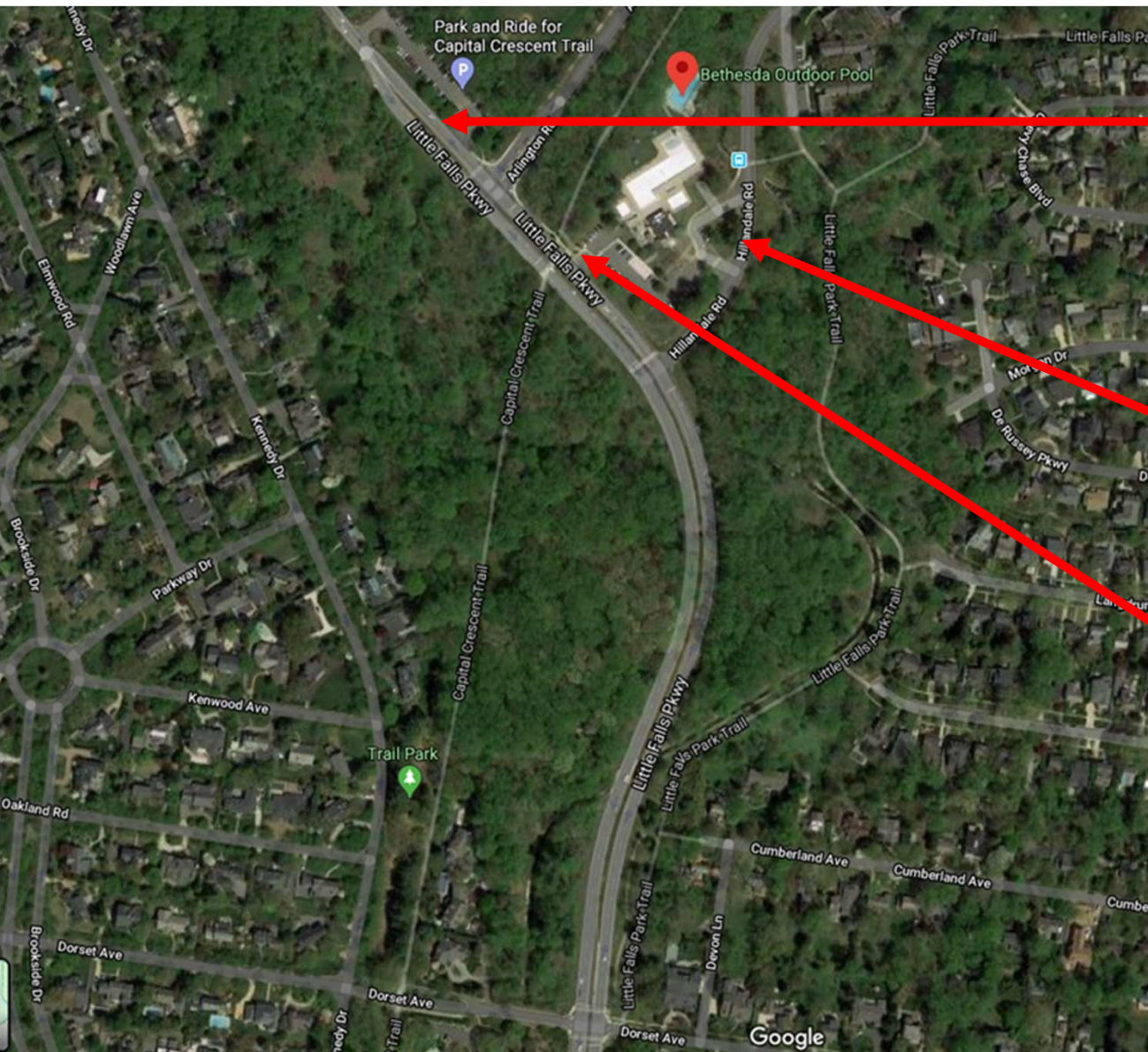
- HOA agreed to leave gate at Butler Rd open. Parks to provide cones for their visitor parking

Closure of River Road (includes exit lane)
Width of LFP North:
Barriers needed:
Width of LFP South:
Barriers needed:

Closure of Willett Branch Rd.
Street width:
Barriers:

Closure of Little Falls Parkway
Street width:
Barriers:

Barrier Locations



Barrier Locations

Closure of Little Falls Parkway North of Arlington Road Intersection

Width of LFP:

Barriers needed:

Closure of Hillendale Road

Width of LFP North:

Barriers needed:

Width of LFP South:

Barriers needed:

Closure of pool exit to LFP

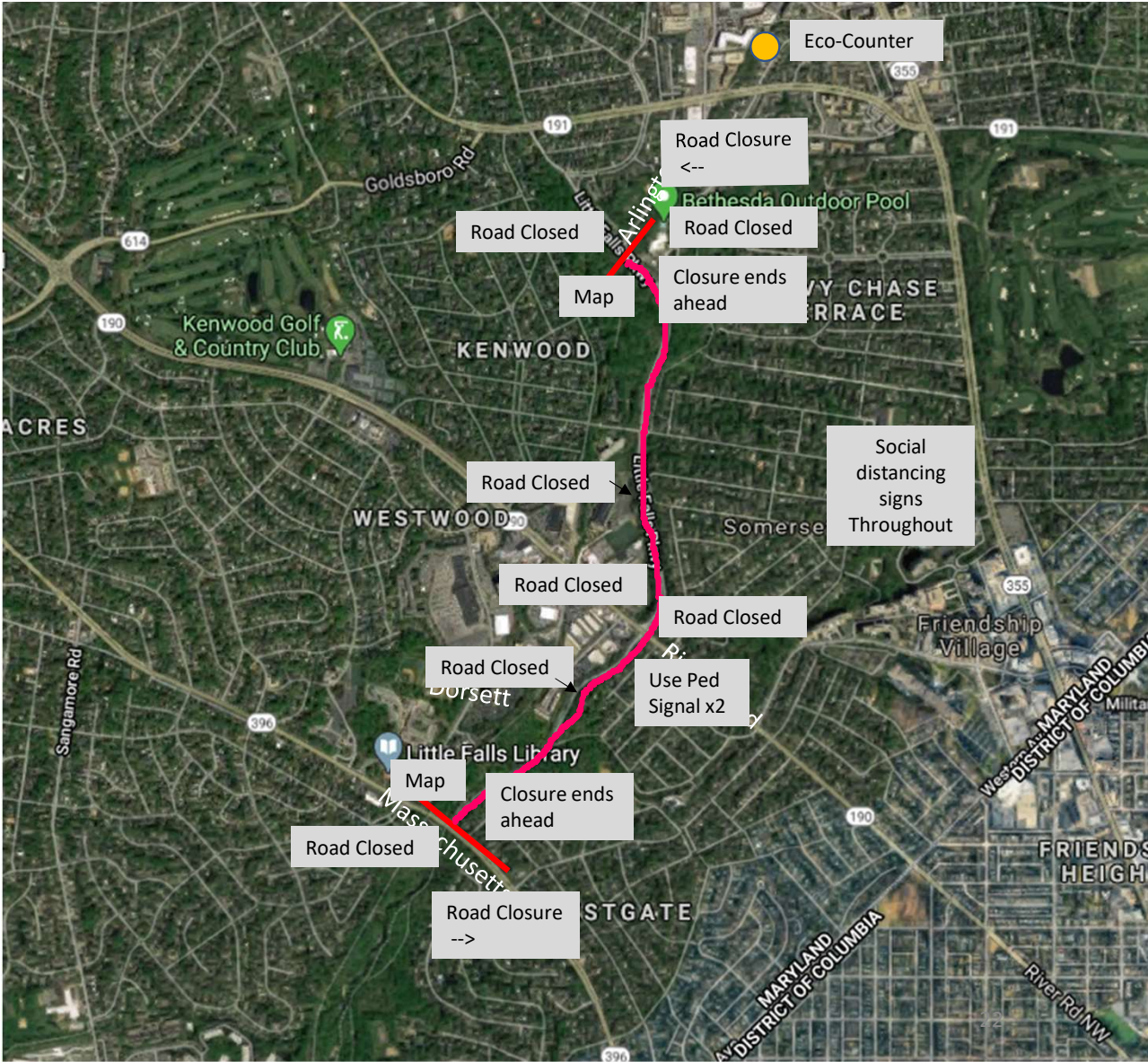
Width of Exit:

Barriers needed:

Sign Locations

Little Falls Parkway Closure from
Massachusetts Ave to Arlington.
Sign Locations

Distance: 1.33 miles
Masos Ave to Bethesda
Outdoor Pool





Closure: Beach Drive

Closed to motor vehicle traffic
Friday 9 am to Sunday 6 pm

Knowles Avenue to Cedar Lane
Cedar Lane to Connecticut Avenue

Distance: 2.7 miles

Respect the Radius:
Keep six feet or more
between you and others.

MontgomeryParks.org

Our trails are open, but please:

- ▶ Avoid crowds
- ▶ Keep six feet between you and others
- ▶ When passing, call out "on your left"

Nuestros senderos están abiertos, pero por favor:

- ▶ Evite las multitudes
- ▶ Mantenga al menos seis pies de distancia entre usted y los demás
- ▶ Antes de pasar, en voz alta diga "a su izquierda"



montgomeryparks.org
301-495-2595

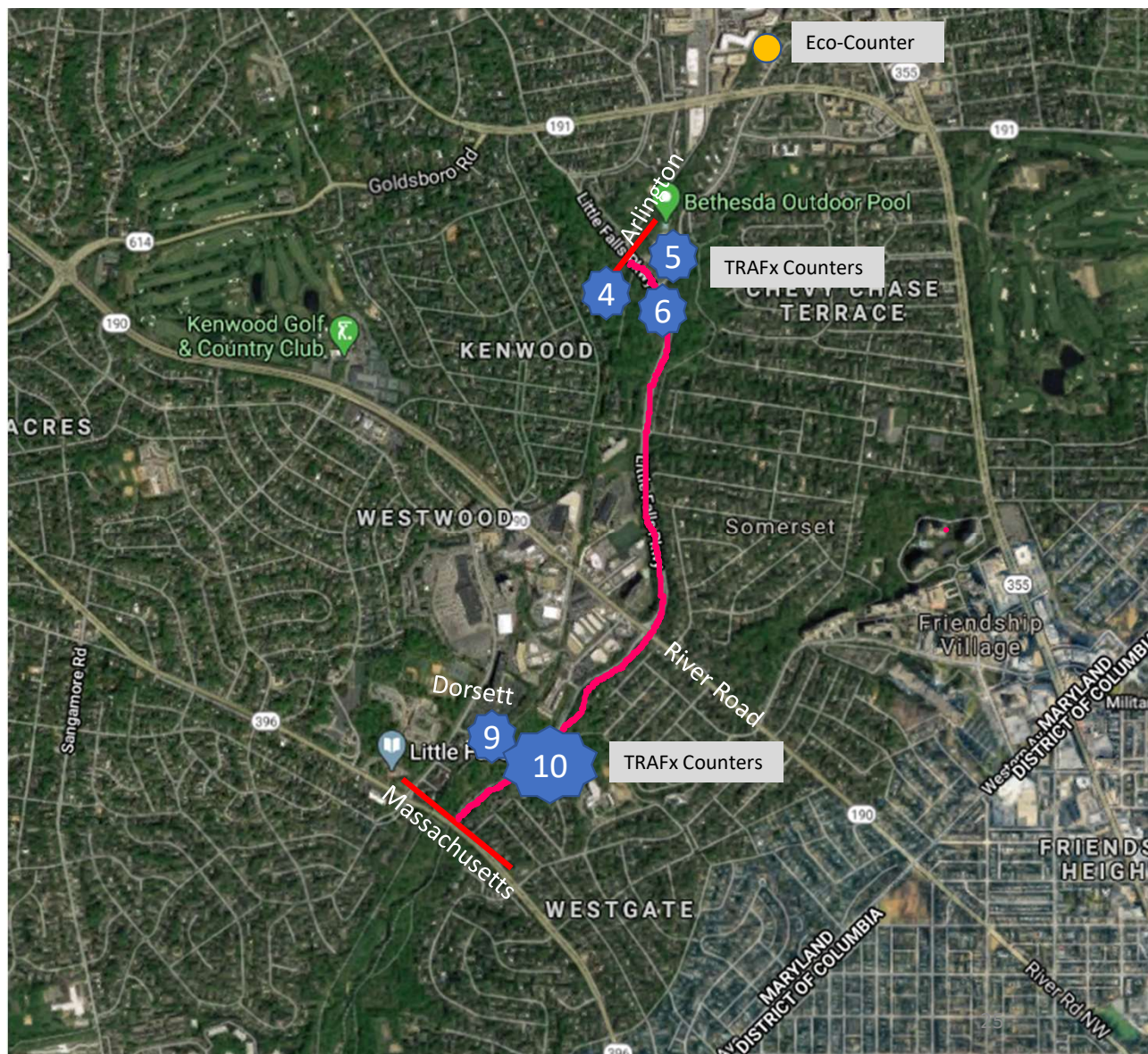
By Authority of M-NCPPC
Por Autoridad de M-NCPPC

Counter Locations

Little Falls Parkway Closure from Massachusetts Ave to Arlington. Friday – Sunday (24 Hours)

Distance: 1.33 miles
Mass Ave to Bethesda
Outdoor Pool

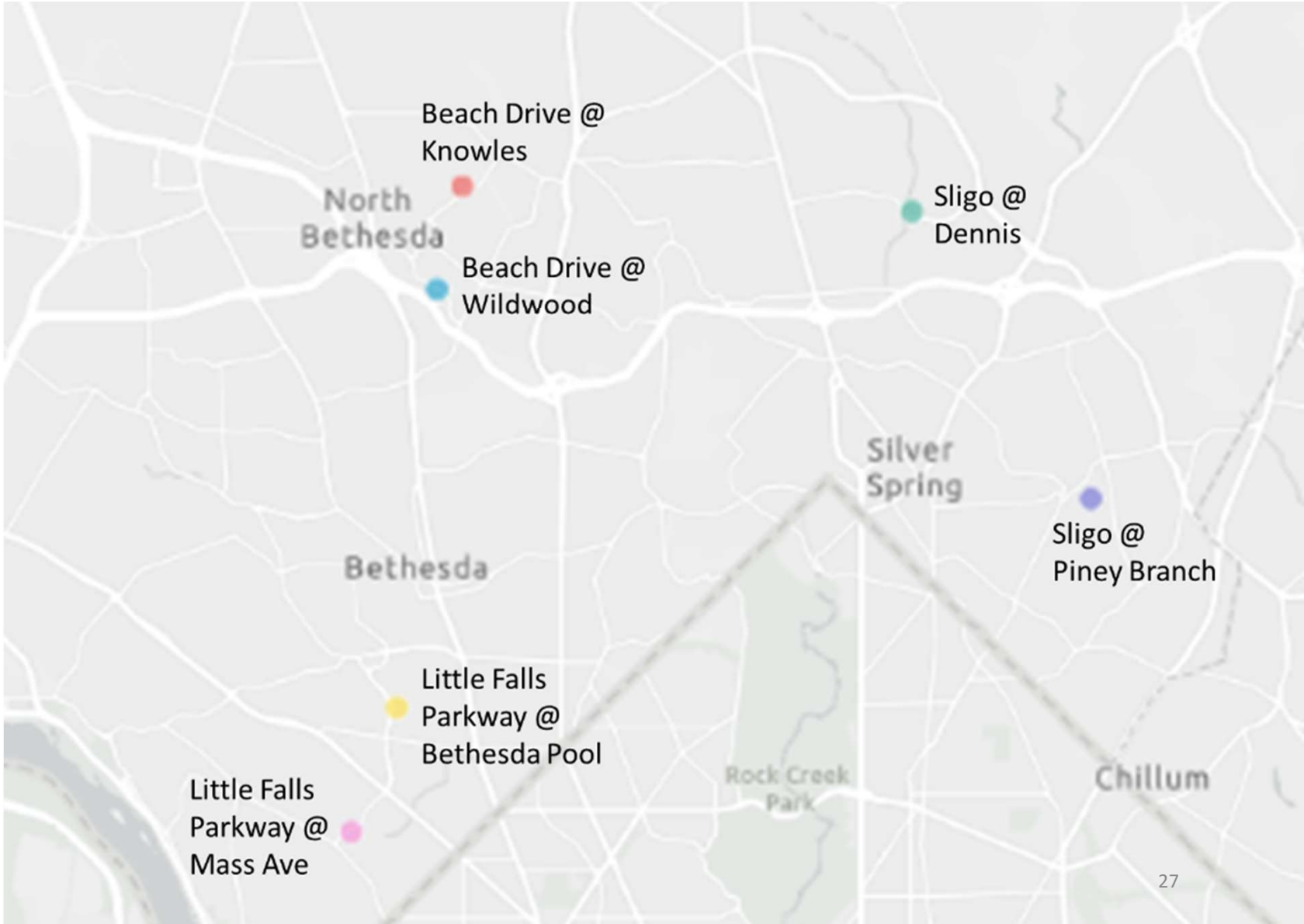
The other CCT Eco-Counter is south at Dalecaria/Macarthur Boulevard, near the DC boundary



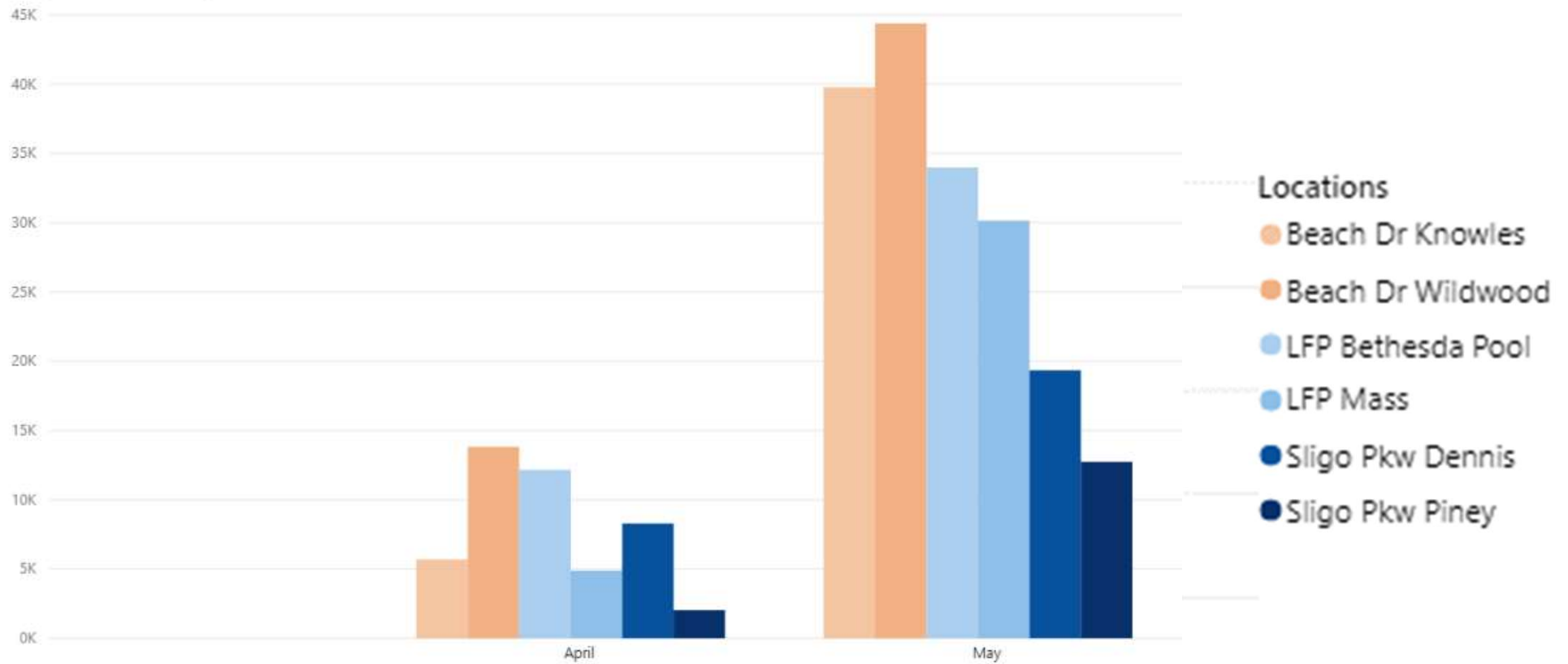
Beach Drive and Rock Creek Trail



Parkway Counter Locations

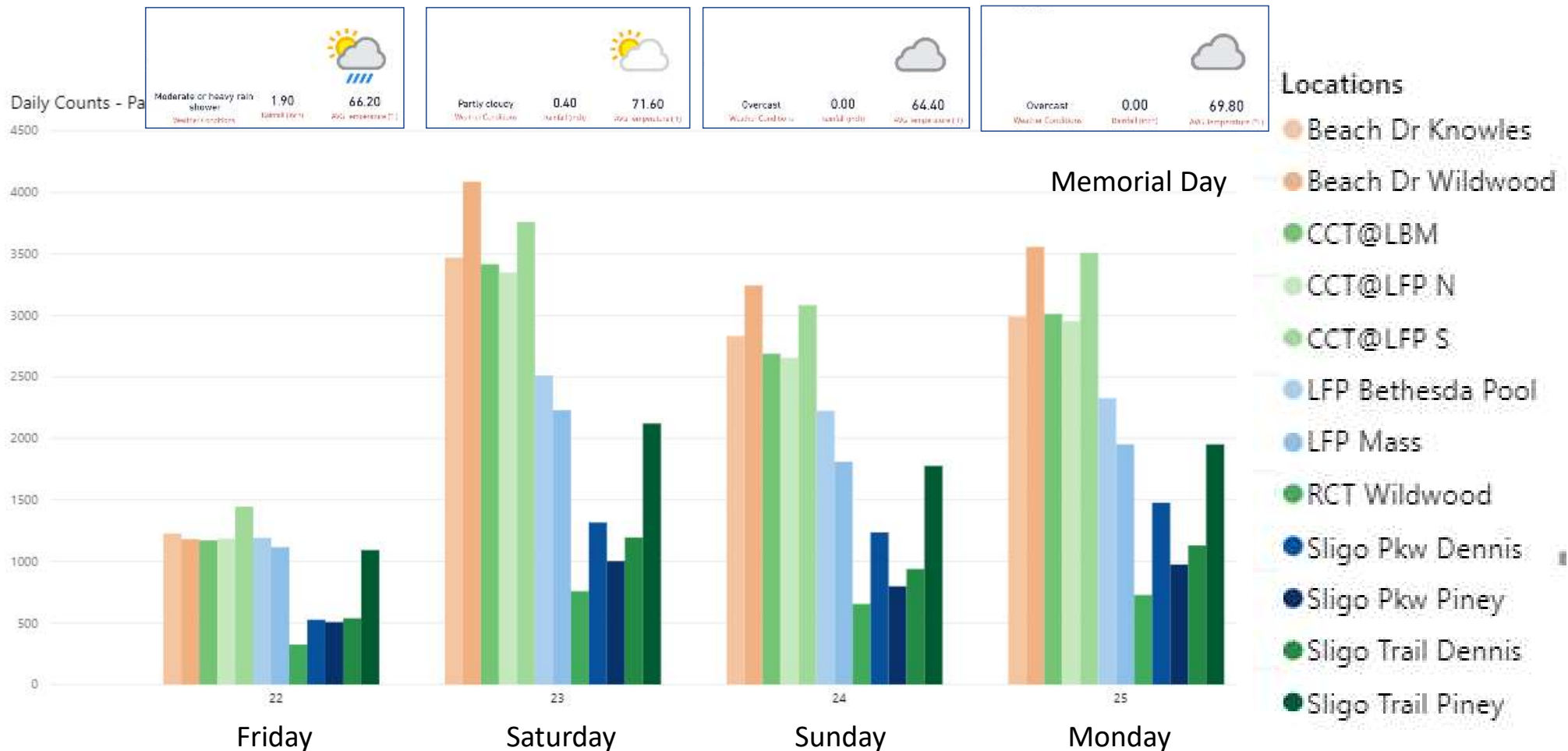


Guesses?



Note: Revised numbers since previous version of this slide.

Memorial Day Weekend (May 22, 23, 24, 25)



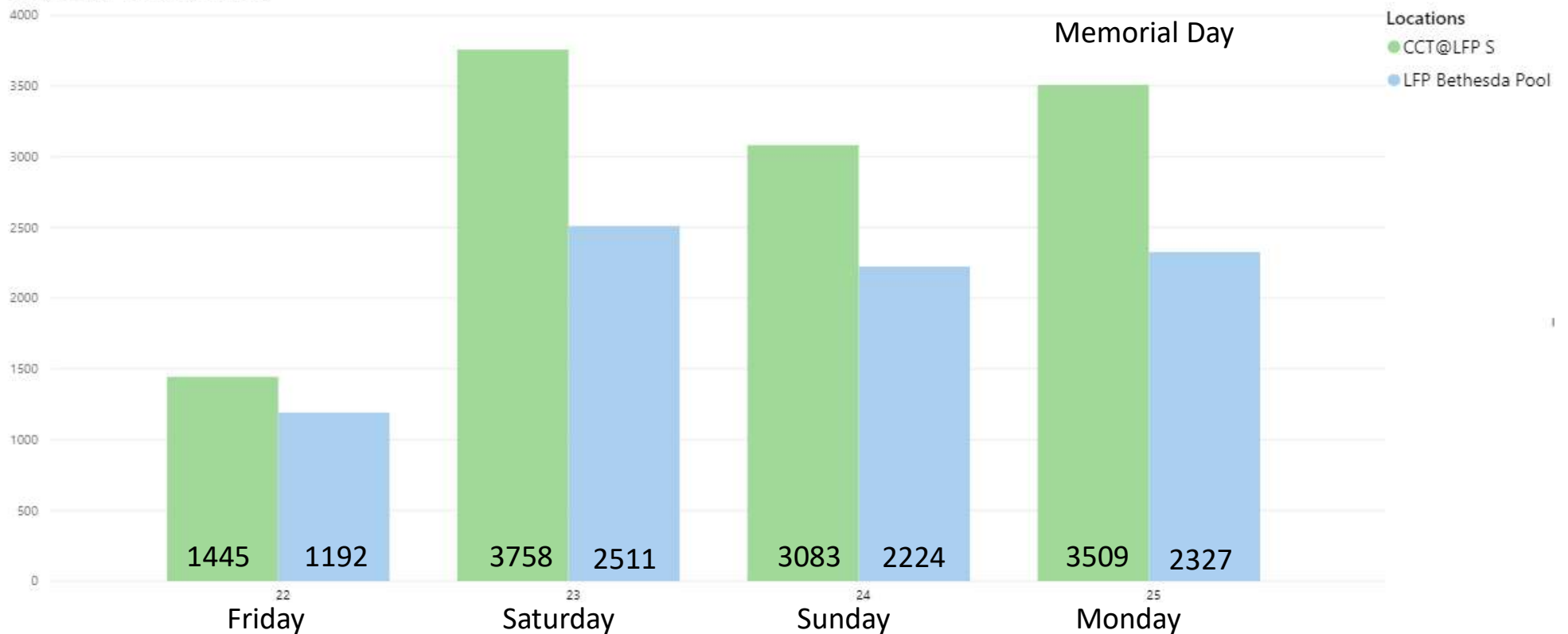
Trail vs. Parkway -- Beach Dr. & Rock Creek Trail

Daily Counts - Parkways & Trails



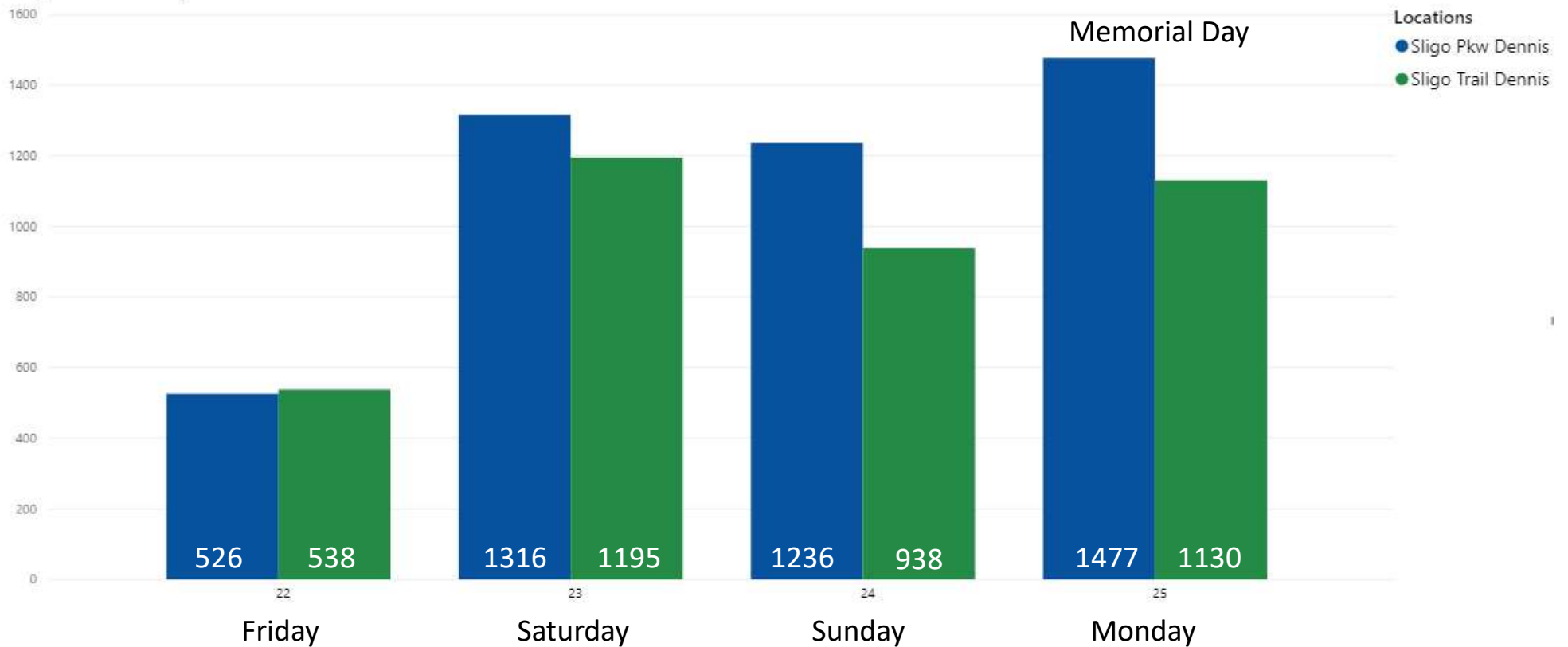
Trail vs. Parkway -- Capital Crescent Trail & Little Falls Parkway

Daily Counts - Parkways & Trails

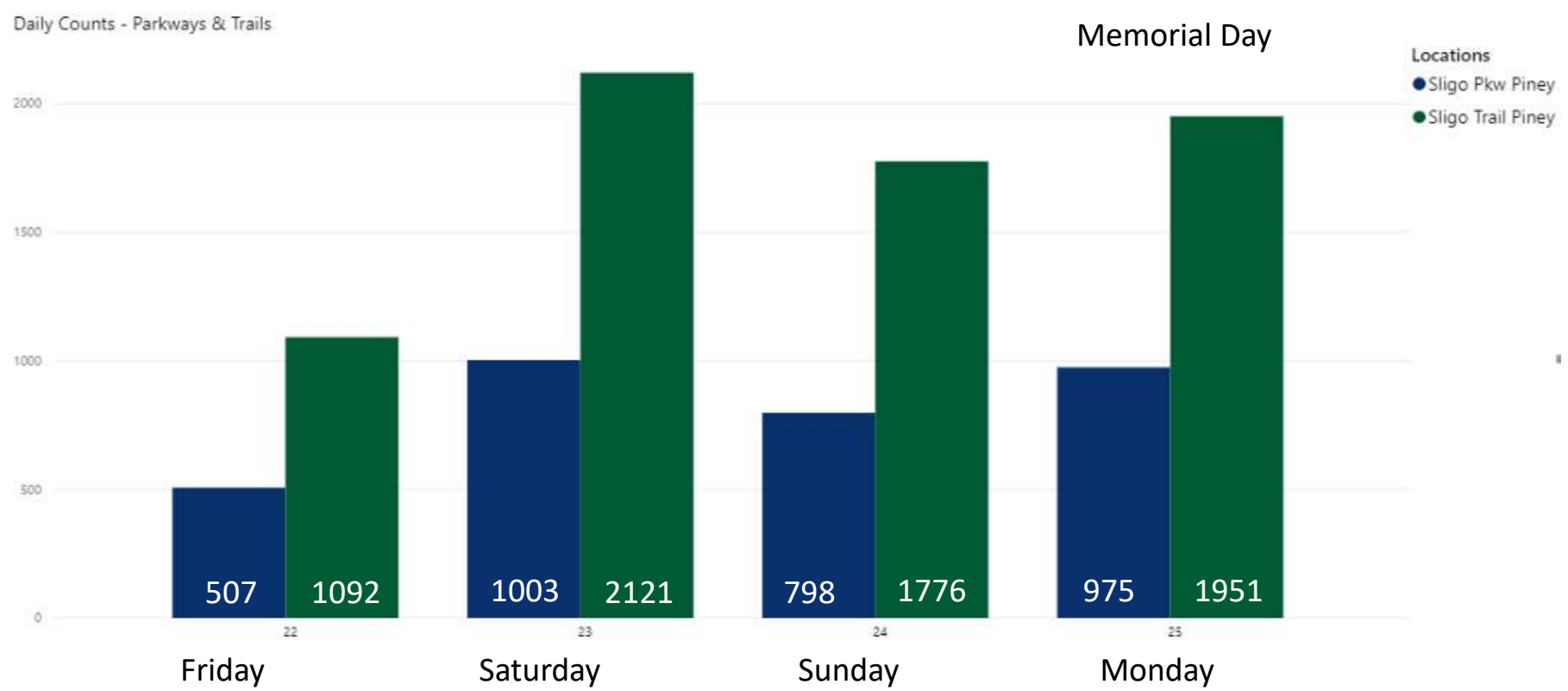


Trail vs. Parkway -- Sligo @ Dennis Ave.

Daily Counts - Parkways & Trails

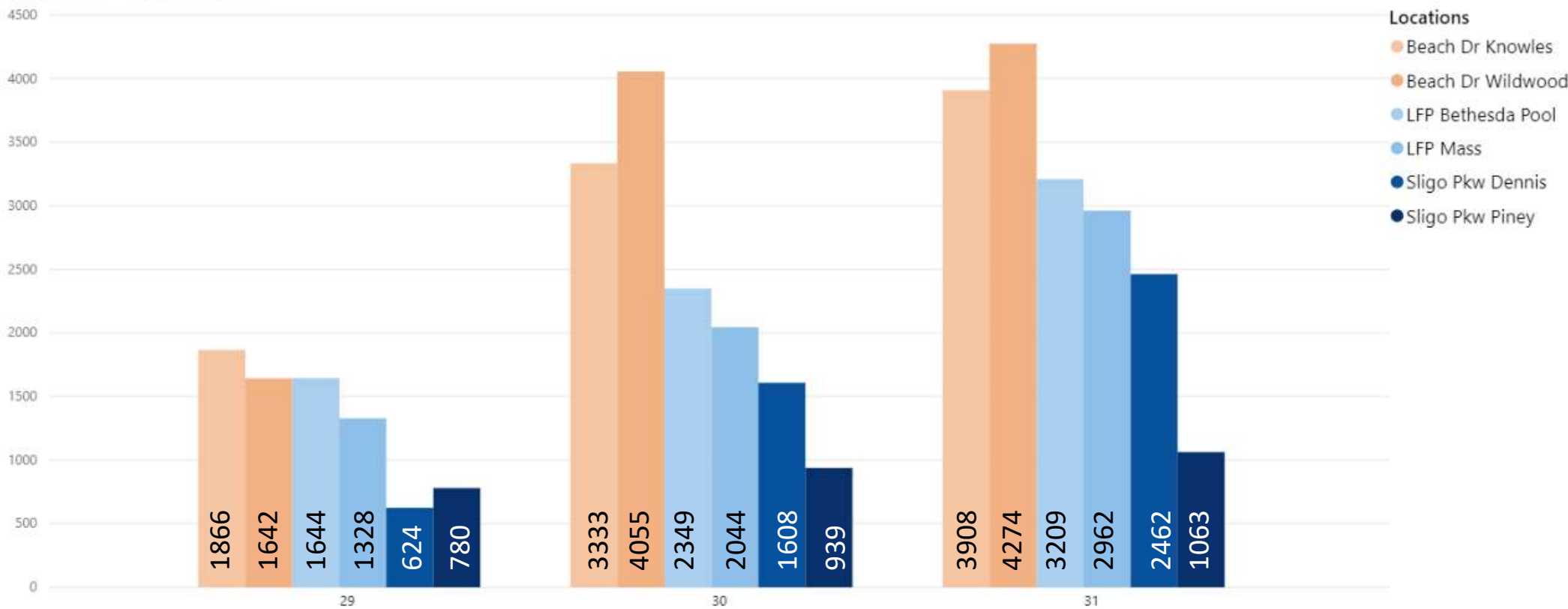


Trail vs. Parkway -- Sligo @ Piney Branch Road



May 29, 30, 31

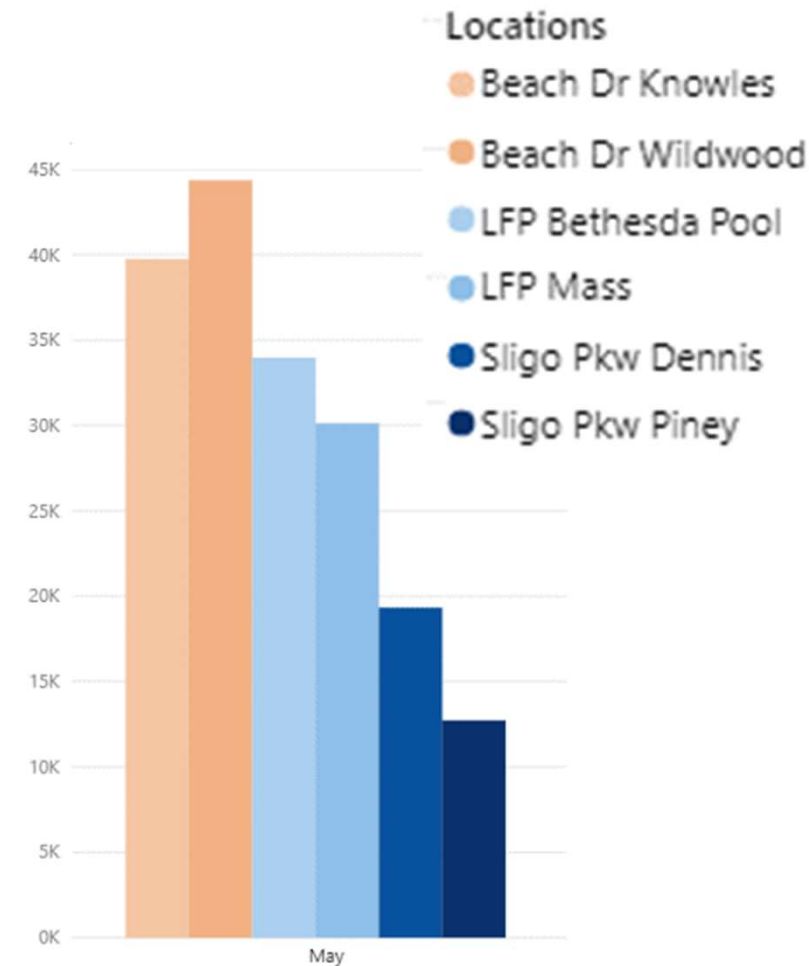
Daily Counts - Parkways & Trails



34

Counting Conclusions

- The Open Parkways have provided additional space for 10s of thousands of users
- Where the Open Parkway is consistently visible from the trail, parkway use increases
- Weather matters
- Volumes across locations vary, but tend to trend together based on day of the week and weather



Feedback & Lessons Learned

- More messaging on trails to direct trail users to Parkway closures and encourage physical distancing
- More room at crossings; People are being channelized to narrow gaps & mud; Accessibility
- Larger maps
- Welcome Banners: “Road Closed to Motor Vehicles. Open for Walking and Biking.”
- Drop “Ahead” from road closure signs



Stencils



Stencils



Note: We moved away from colored text, due to legibility issues.

Stencils





Gates



Connecticut Ave. & Beach Drive - Before



Connecticut Ave and Beach Drive – Interim



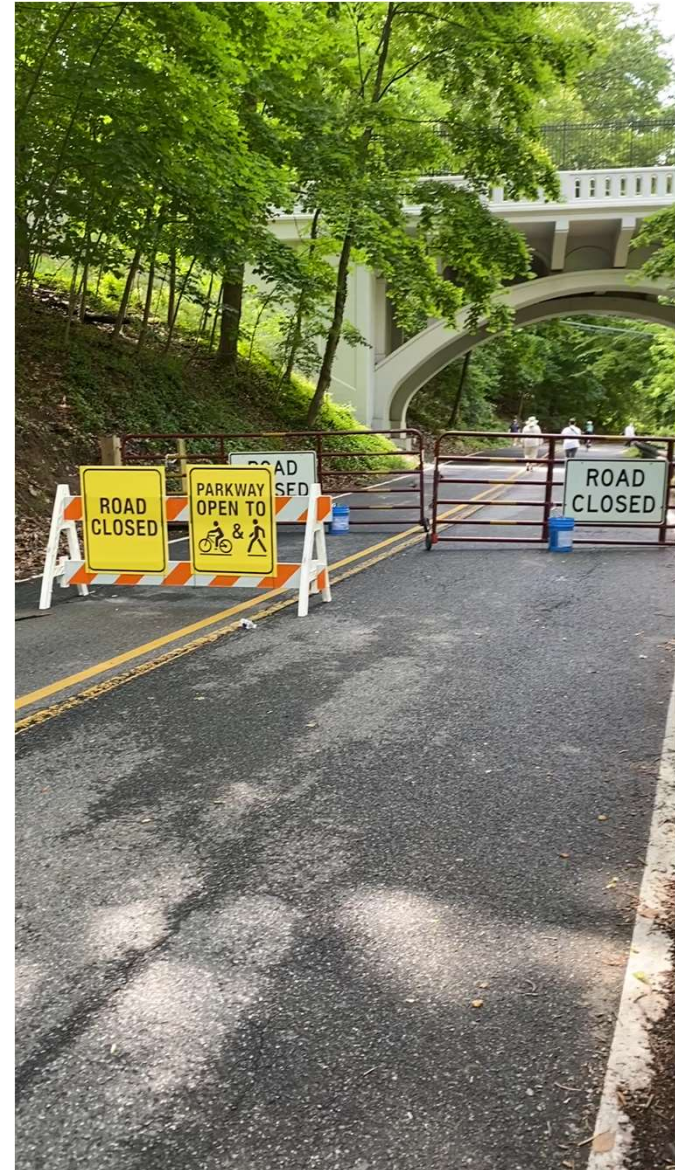
Connecticut Ave. and Beach Dr. -- Now



Old Carroll -- Before



Old Carroll – Interim



Old Carroll – Now



47

Little Falls Parkway



THANK YOU

Next Steps

Schedule

- Continue Open Parkways through August 30
- Explore modified Open Parkways beyond August 30
 - Public engagement
 - Accessibility

Infrastructure

- Continue gate retrofits
- LFP Gates
- Paved sidewalks
- Permanent signs and banners