

MEMORANDUM

March 6, 2023

TO: Health and Human Services Committee

FROM: Vivian Yao, Legislative Analyst

SUBJECT: **Worksession: Resolution Designating the Montgomery County Collaboration Council for Children, Youth and Families as the County's Local Management Board for Children, Youth and Families**

PURPOSE: Review and make a recommendation on the resolution

The purpose of this worksession is to discuss the designation of the Collaboration Council as the County's Local Management Board (LMB).

The following Collaboration Council representatives are expected to attend the discussion:

- Elijah Wheeler, Executive Director, Montgomery County Collaboration Council for Children, Youth and Families (Collaboration Council)
- Meredith Bowers, Deputy Director, Collaboration Council
- Alycia Chuney, Director of Reengagement, Collaboration Council
- Jayne Park, Senior Fellow, Collaboration Council
- Thylan Singleton, Out-of-school time (OST) Program Manager, Collaboration Council
- Freddy Climaco, OST Program Coordinator, Collaboration Council

The Council introduced the resolution to designate the Collaboration Council for another three-year period on January 24, 2023. Action on this resolution is scheduled for March 14, 2023. A draft resolution is attached at ©1-2.

BACKGROUND

State law requires the County to have a Local Management Board (LMB) to ensure the effective coordination and implementation of local service delivery systems for children, youth, and their families. The Collaboration Council has served as the County's LMB since 1993.

Prior to May 4, 2004, the Collaboration Council operated as a part of County Government. In September 2003, the Council passed Article VI of Chapter 2 of the County Code authorizing the designation of a quasi-public nonprofit corporation as the County’s LMB. The Council subsequently designated the Collaboration Council in its newly incorporated non-profit structure as the County’s LMB on May 4, 2004. Factors that affected the organizations decision to restructure from a County Government entity to a quasi-public nonprofit corporation included the need to clarify the separation of authority and responsibility between the Collaboration Council and the Department of Health and Human Services (DHHS); the efficiency resulting from it own procurement process when administering funds; and the opportunity to simplify the organization staffing structure, develop new bylaws, provide a more directed scope of work, simplify the distribution of programmatic funding, and pursue private funding.

The County law provides for a three-year designation period. The last designation occurred on March 24, 2020.

UPDATE

Mr. Wheeler will update the Committee on the Collaboration Council’s key efforts. Briefing materials from the Collaboration Council are attached at (©3-24).

Budget

The Board approved budget for FY23 is attached at ©6-8. The budget shows total revenues of \$6,917,454 and total expenditures of \$6,761,793, a difference of \$155,661. Total funding of direct program services is \$5,610,576. A large percentage of the Collaboration Council's funding comes from public sources, i.e., the State of Maryland and Montgomery County. For FY23, 99.2% of total revenues come from these two sources, \$2,583,462 or 37.3% and \$4,283,992 or 61.9%, respectively.

An organizational chart is attached at ©4.

Programming

An initiative and program update, including outcomes and service data, is attached at ©9-24. The following tables describe the programs and activities supported by the Collaboration Council by Initiative Area:

Initiative 1: Community Health & Wellbeing (includes Substance Use Disorder Prevention, Early Care and Education, and Children with Intensive Needs)

Name	Description	©
Montgomery County Prevention Alliance	Convenes public and private sector stakeholders to engage the community to prevent youth substance use and misuse. Produces videos and awards Under 21 Mini Grants.	11-13
Healthy Families Montgomery	Provides nationally accredited in-home early intervention parenting support to first time parents.	13-15
The Basics	Works with community partners to saturate a community(20877) with five Basic ECE pillars.	13-15

Pathways to Services	Connects children with emotional and/or behavioral health and their families to supports and services, often including a trained family navigator.	15
Local Care Team	Resolves complex needs of children and youth through interagency partnership of eight public child-serving agencies. Problem solves barriers that impede a child's ability to remain or return to their families and communities, while improving their functioning.	15-16

Initiative 2: InfoMontgomery

Name	Description	©
InfoMontgomery	Provides detailed information about health, education and human service resources in the County.	16-17

Initiative 3: Social Justice for All

Name	Description	©
Racial and Ethnic Disparities Community	Formerly known as Disproportionate Minority Contact Reduction. Addresses disparities for youth of color who come into contact with the juvenile justice system by looking at legislation, policies, decision-making and resource gaps that have a disparate effect on youth outcomes.	17-18

Initiative 4: Positive Youth Development (includes Out-of-School Time (OST), Evening Reporting Center, Conservation Corps, and MoCo ReConnect Reengagement Center)

Name	Description	©
Excel Beyond the Bell	Provides safe, quality, and accessible out-of-school time programs for school-aged youth and professional development and funding support for program providers in partnership with public agencies and community-based organizations.	18-19
MC Community Youth Support & Engagement Programs (MoCoCYSE)	Provides access to developmental and social-emotional OST programming in partnership with public agencies and community-based partners.	19
Youth Sports Initiative	Increased equitable access to youth sports post-pandemic and led to the creation of the PLAY Montgomery initiative.	19-20
Social Emotional Learning Pilot	Provides social-emotional learning through STEM-focused project-based learning activities and career exploration through Crittenton Services of Greater Washington.	20
Evening Reporting Center	Provides after-school services for court-involved youth as an alternative to detention through Pride Youth Services.	21
Conservation Corps	Provides hands-on work experience on conservation projects for young people age 17-24, as they work toward gaining their GED.	21
MoCo Reconnect Reengagement Center – Youth Advisory Board	Convenes MoCo ReConnect coalition and Youth Advisory Board to reconnect youth and young adults 16-24 who have dropped out of or stopped attending high school with	22

	educational opportunities.	
--	----------------------------	--

Initiative 5: Community Practice/Community of Engagement

Name	Description	©
Advancing Youth Development Training	Provides professional learning opportunities to build the capacity of youth development practitioners.	23
Community of Engagement	Provide training based on the expressed needs and wants of the community, including community forums, listening sessions, community-led trainings for nonprofits, and data collection for community advocacy.	23-24
MoCo Boost Guaranteed Income Pilot	Acts as the nonprofit partner for the program launched by the County in FY22 for 100 households recently served by County’s Homeless Continuum of Care and 200 participants with at least one dependent who sought assistance from the County during the pandemic.	24

Discussion Issues:

The Committee may be interested in discussing the following issues with Collaboration Council representatives:

- **Community Needs Assessment (CNA) and COVID:** County staff understands that the last CNA was completed in 2020 before the onset of the pandemic. How did your work change to respond to community needs as a result of the pandemic? How are you planning on assessing community needs post-pandemic?
- **State Funding:** Under the new Executive leadership for the State, what opportunities may be available for funding of local priorities through the LMB, including OST programming? Do you anticipate that changes to funding priorities and State administrative structures under former Governor Hogan will remain in effect?
- **Early Care and Education (ECE) and OST Programming:** Now that the Children’s Opportunity Alliance has been established, has there been any discussion about the appropriate roles of County partners in supporting initiatives including ECE services managed by the Collaboration Council and school-age OST programming supported by the Children’s Opportunity Fund?

Council staff recommendation:

Council staff recommends redesignating the Collaboration Council for Children, Youth, and Families as the County's Local Management Board for another three-year period as provided under County law. The organization continues to fulfill its obligation under state and local law by administering state and local funds for children's services, planning and coordinating these services, building local partnerships, and maintaining standards of accountability that support improved outcomes for children.

Resolution No.: _____
Introduced: January 24, 2023
Adopted: _____

**COUNTY COUNCIL
FOR MONTGOMERY COUNTY, MARYLAND**

Lead Sponsor: County Council

SUBJECT: Resolution to Designate the Montgomery County Collaboration Council for Children, Youth, and Families as the County’s Local Management Board for Children, Youth and Families

Background

1. State law requires the County to establish or designate a local management board to ensure the implementation of a local, interagency service delivery system for children, youth, and families. Under State law, the County may designate a quasi-public, nonprofit corporation that is not an instrumentality of the County to act as the County’s local management board.
2. Section 2-119 of the County Code establishes a process to designate a quasi-public corporation as the local management board. It also establishes certain criteria that a quasi-public corporation must meet to be designated as the local management board.
3. On April 26, 2004, the Montgomery County Collaboration Council for Children, Youth, and Families submitted its articles of incorporation and by-laws to the County Council and formally requested to be designated as Montgomery County’s Local Management Board. The Council approved this designation in Resolution 15-599 on May 4, 2004.
4. Subsequently, the County has approved resolutions designating the Collaboration Council as the County’s Local Management Board four additional occasions. The last designation took place on March 20, 2020, pursuant to Resolution 19-386.
5. By law, the Council’s designation of a local management board expires three years after the designating resolution is adopted unless the Council extends the designation by adopting another resolution.

Action

The County Council for Montgomery County, Maryland approves the following resolution:

The Council hereby designates the Montgomery County Collaboration Council for Children, Youth, and Families as the County's Local Management Board for Children, Youth, and Families pursuant to County Code Section 2-119.

This is a correct copy of Council action.

Judy Rupp, Clerk of the Council

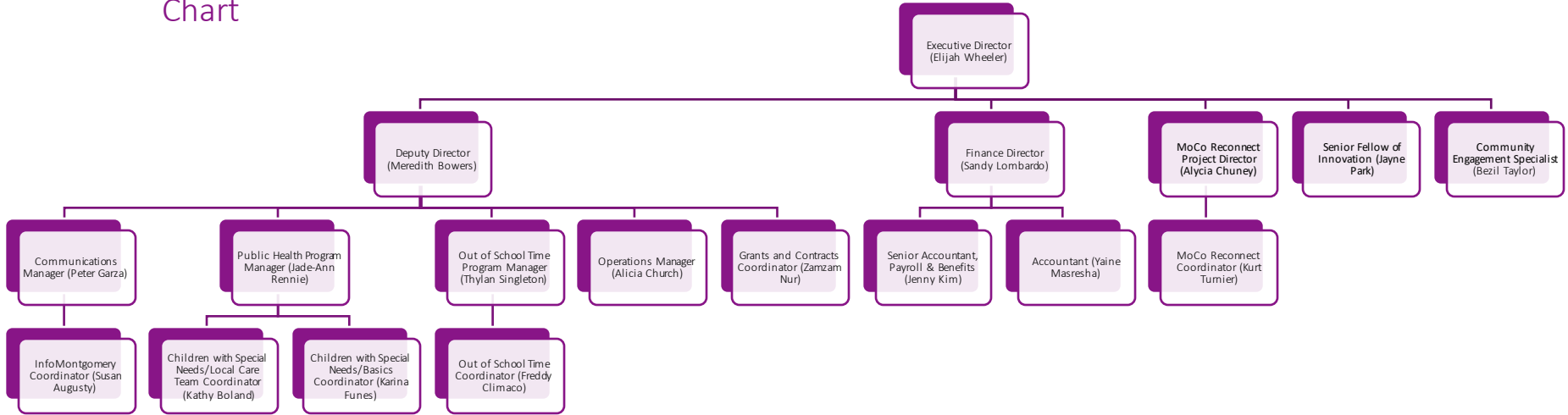


To: Vivian Yao
From: Elijah Wheeler, Executive Director
Date: February 28, 2023
Re: LMB Redesignation

Contents:

1. Organizational chart that includes key programming areas and staffing
2. Actual expenditures by program area from FY19-22 and approved budget for FY23
3. Revenues by funding source by State Agency, County Department/Agency, private foundations, earned reinvestment fund, investments income, and other miscellaneous income from FY19-FY22 and budgeted FY23
4. Description of program areas, including target population, activities and outcomes.
5. Most recent community needs assessment completed
6. Other updates, accomplishments, concerns, challenges, etc.

FY23 Organizational Chart





Actual Expenditures by Program Area FY19-FY22

MONTGOMERY COUNTY COLLABORATION COUNCIL FOR CHILDREN, YOUTH, AND FAMILIES, INC.					
Total Expenditures by Program					
		FY 2019	FY 2020	FY 2021	FY 2022
ACE Academy	22,112	36,335		-	
Children with Intensive Needs	933,523	1,066,243		1,038,739	988,545
Community of Practice	377,999	129,204		75,174	82,046
Excel Beyond the Bell	599,216	510,741		-	-
Equal Justice for All Youth	1,284,398	1,084,899		1,196,262	933,890
Early Childhood	179,735	174,710		165,768	180,551
Info Montgomery	103,242	131,078		127,905	120,728
Re-Engagement Center	293,036	430,891		489,247	843,597
Social Emotional		- 100,301		92,324	83,091
Substance Abuse Prevention	200,939	188,542		214,452	172,037
Systems of Care	1,190,641	1,050,651		281,624	2,690
Youth Advisory		- 8,032		-	-
Out-of-School Time Management and General		507,076	959,175	732,334	1,162,167
				746,161	771,924
TOTAL	\$5,691,917	\$5,870,802	\$5,159,990	\$5,341,266	

**In FY22: program expenses represented 85.5% of total expenses.*

Revenue by Funding Source

	FY19	FY20	FY21	FY22
TOTAL	\$5,184,841	\$5,662,273	\$5,281,644	\$5,705,798
State of Maryland	31%	36%	39%	34%
Montgomery County	46%	45%	54%	61.5%
Federal	21%	18%	5%	0%
Private Foundations	2%	1%	2%	4.5%



Montgomery County Collaboration Council
FY23 Budget for Final Approval

Revenue by Funding Source	FY22 Approved Budget	Variance FY22 vs FY23	FY23 Preliminary Proposed Budget	FY23 Proposed Budget	Variance Preliminary vs Proposed FY23
GOC / State - Current Year Grants	1,589,119	253,314	1,842,433	1,842,433	-
DJS - Current Year Grants	510,065	23,613	533,678	561,781	28,103
MSDE - Current Year Grants	<u>179,248</u>	<u>-</u>	<u>179,248</u>	<u>179,248</u>	<u>-</u>
Sub-total State of Maryland	<u>2,278,432</u>	<u>276,927</u>	<u>2,555,359</u>	<u>2,583,462</u>	<u>28,103</u>
Montgomery County	3,635,361	518,693	4,154,054	4,283,992	129,938
Private Foundations	110,000	(80,000)	30,000	30,000	-
Contributions	10,000	10,000	20,000	20,000	-
Net Assets Released	<u>34,600</u>	<u>(34,600)</u>	<u>-</u>	<u>-</u>	<u>-</u>
Total Program Support	<u>\$ 6,068,393</u>	<u>\$ 691,020</u>	<u>\$ 6,759,413</u>	<u>\$ 6,917,454</u>	<u>\$ 158,041</u>
Operating Expenses					
Direct Program Services					
Direct Service Providers	3,951,031	423,607	4,374,638	4,573,383	198,745
Program Salaries	684,125	99,427	783,552	786,045	2,493
Program Fringe & Employee Benefits	<u>178,733</u>	<u>72,415</u>	<u>251,148</u>	<u>251,148</u>	<u>-</u>
Sub-total Direct Program Services	<u>\$ 4,813,889</u>	<u>\$ 595,449</u>	<u>\$ 5,409,338</u>	<u>\$ 5,610,576</u>	<u>\$ 201,238</u>
Program and Administrative Supporting Services (LMB and Admin)					
Salary	570,170	3,233	573,403	575,223	1,820

	FY22 Approved Budget	Variance FY22 vs FY23	FY23 Preliminary Proposed	FY23 Proposed Budget	Variance Preliminary vs Proposed FY23
			Budge		
Fringe & Employee Benefits		(6,332)	189,154	189,154	-
Rent	195,486	2,997	78,597	78,597	-
Accounting		500	25,250	29,750	4,500
Advertising & Promotion	75,600	(3,641)	6,000	6,000	-
	24,750				
	9,641				
Business Insurance		2,000	18,000	18,000	-
Business Travel		-	1,508	1,508	-
Meeting & Forum Expenses for Programs	16,000	(5,000)	5,000	5,000	-
	1,508				
Contractual Services	10,000	(39,000)	50,000	53,000	3,000
Dues, Licenses and Subscriptions	89,000	(840)	11,000	11,000	-
Equipment Leasing/Maintenance	11,840	(524)	6,500	6,500	-
Equipment Software Fees	7,024	4,735	57,000	62,300	5,300
		1,178	25,000	25,000	-
Information Technology	52,265	5,500	35,000	38,000	3,000
Legal Services	23,822	1,000	7,000	8,000	1,000
Outreach Expenses		-	2,000	2,000	-
	29,500				
Office Equipment	6,000	863	4,000	5,000	1,000
Postage	2,000	-	360	360	-
Printing		-	-	350	350
	3,137				
	360				
	-				

	FY22 Approved Budget	Variance FY22 vs FY23	FY23 Preliminary Proposed	FY23 Proposed Budget	Variance Preliminary vs Proposed FY23	
	Budget					<i>F</i>
Professional Development & Board Related Expenses	5,000	2,000	7,000	8,000	1,000	
Program and Office Supplies	3,975	-	3,975	3,975	-	
Staff Appreciation	1,500	-	1,500	1,500	-	
Recruiting	2,300	700	3,000	3,000	-	
Communication	18,984	1,016	20,000	20,000	-	
Total Expenses	\$ 5,973,751	\$ 565,834	\$ 6,539,585	\$ 6,761,793	\$ 222,208	
Change in Net Assets	\$ 94,642	\$ 125,186	\$ 219,828	\$ 155,661	\$ (64,167)	

Program Acronyms:

GOC - Governor's Office for Children
 LMB - Local Management Board
 YAC - Youth Advisory Council
 YSI - Youth Sports Initiative
 WRAP - Wraparound Services
 SABG - Substance Abuse Block Grant
 OMPP - Opioid Misuse Prevention Program
 COP - Community of Practice
 MOCOCYSE - Montgomery County Youth Support & Engagement Summer Program Hubs

ERC - Evening Reporting Center
 DJS - Dept. of Juvenile Services
 MSDE - Maryland State Dept of Education
 SEL - Social Emotional Learning
 EBB - Excel Beyond the Bell

ERC - Evening Reporting Center
 DJS - Dept. of Juvenile Services
 MSDE - Maryland State Dept of Education
 SEL - Social Emotional Learning
 EBB - Excel Beyond the Bell



Descriptions of Program Areas and Accomplishments

The Collaboration Council now hosts six websites:

- <https://collaborationcouncil.org>
- <https://montgomerycountypreventionalliance.org/>
- <https://mocreconnect.org/>
- <https://www.infomontgomery.org/>
- <https://excelbeyondthebell.org/>
- <https://mocoboost.org/>

Summary of Initiative Areas:

Community Health & Wellbeing:

Focuses on the combination of social, economic, cultural and environmental factors, otherwise known as the social determinants of health, that people need in order to have improved health outcomes and a high quality of life. By adopting a health equity framework, we believe that a baseline level of health is actually achievable for all people across the lifespan.

Substance Use Disorder Prevention:

- In partnership with the Montgomery County Department of Health and Human Services and the Montgomery County Goes Purple initiative, five community forums and two resource fairs were held to increase education and awareness about the impact of opioid use and misuse on individuals, their families and the larger community.
- Thirty-five mini grants were awarded to local organizations that hosted youth led, adult guided substance use prevention events to educate high school aged youth about the short and long-term consequences of substance use and misuse.

Early Care and Education: Educating parents and caregivers about evidence-based principles that help to improve cognitive and social emotional development among children 0 -5. This ensures that all children between the ages of 0-5 are healthy, happy and learning every day so that they are prepared to succeed upon entering kindergarten.

- **The Basics:** A total of 301 children (through their parents or caregivers) enrolled in The Basics Insights text messaging program. The text messaging program provides parents and caregivers with activities that incorporate early childhood learning into everyday routines .
- **Home Visiting:** 115 first time mothers were enrolled in our Healthy Families Montgomery home-visiting program and 336 families were served via 5,710 home visits.



Accessing Services for Children and Youth with Intensive Needs: Moving children and youth towards better behavioral health outcomes.

- Approximately 2,423 calls were responded to by our *Pathway to Services* office.
- The Local Care Team (LCT) reviewed 309 cases and 142 families were connected to JSSA's wraparound services.

infoMontgomery: Connecting Montgomery County residents to available services and resources and identifying gaps in services.

- The infoMONTGOMERY database contains over 1,600 programs for more than 675 county agencies.
- The website also hosts an event calendar, a searchable map, news blogs, social media links and seventeen resource guides.
- In collaboration with our partners, a COVID-19 pandemic page was launched in April 2022 to provide visitors detailed information on COVID-19 specific services, calendar items and announcements. Information on financial assistance, food access, healthcare, employment, housing and homelessness resources and supports for families was also made available for visitors.

MoCo Boost Guaranteed Income Pilot: The Collaboration Council, funded by the Meyer Foundation, has been the nonprofit partner on the implementation team for the Montgomery County Guaranteed Income Pilot, MoCo Boost. During the design and launch phase, the Collaboration Council assisting in convening and facilitating the County workgroup as well as a subcommittee to ensure that the pilot would be community-centered in its design, launch, and implementation.

Once MoCo Boost officially launched in late Spring 2022 and its 300 participants began receiving monthly income, the Collaboration Council, in partnership with the community members who had served on the committee during the design and launch phases, began to focus on creating opportunities for the participants to build community and social capital. Currently, these efforts have focused on a series of family-friendly social events for the participants. Contingent on available funding, the Collaboration Council intends to continue to support events like these throughout the pilot as well as create opportunities for participants to share their stories with each other, and the larger community, to build awareness about the benefits of a guaranteed income on an individual, family, community, and societal level.

Positive Youth Development:

Out of School Time: Offering safe, quality and accessible out-of-school time programs.

- EBB held over 200 programs at eight middle schools in the County. Over 80% of the participants reported that the program contributed positively to their social and personal skills.



- MoCoCYSE served over 1400 youth in community based out of school time programming with a focus on family engagement
- YSI: A one year youth sports initiative during the COVID 19 pandemic serving over 700 youth.

Opportunities and engagement for older youth/young adults:

- MoCo Reconnect Drop-In Center: This initiative brings together, for the first time under one roof, a collaboration of agencies providing outreach, case management, education, housing assistance, and employment training for youth aged 16-24 at risk of becoming homeless or experiencing housing instability.
- Evening Reporting Center: The Evening Reporting Center is an after-school program for court-involved youth that serves as an alternative to detention. The program seeks to provide structure during evening hours through therapeutic intervention, skill-building and service learning.
- Conservation Corps: Over the last three years, 90 young people ages 17-24 gain hands-on experience in the environmental sector by working on conservation projects in the field (including County, State, and National Parks as well as in the nonprofit environmental community), while balancing this with work in the classroom as they work toward gaining their GEDs.

Community of Practice/Community of Engagement:

Advancing Youth Development: Building capacity of youth development practitioners

- Served 2,726 youth development professionals through 126 Positive Youth Development-based professional development offerings
- An average of over 79% participants reported that they gained new knowledge from participating in the offerings

Community of Engagement: The CoE is a reimagining of our Community of Practice, which had a focus on training and support for nonprofit agencies regarding their work with children and families. The CoE will also provide trainings but will highlight and focus on the expressed needs and wants of the full community. The work will detail community forums, listening sessions, community led trainings for nonprofits, data collection in the interest of community advocacy, and any other work that our partners express interest in.

INITIATIVE I: Community Health and Well-Being

1. **Substance Use Disorder Prevention Program: Montgomery County Prevention Alliance (MCPA)**



Led by the Collaboration Council, the MCPA coalition aims to prevent youth substance use and misuse and seeks to be inclusive of all public agencies, private organizations, neighborhood coalitions, and community members who are concerned about opioid, alcohol, tobacco and other drugs used by Montgomery County youth.

The mission of MCPA is to build an alliance that engages the community to create conditions that reduce risk factors and increase protective factors to prevent youth substance use

The goals of the coalition include:

- Changing the social environment by promoting community norms to decrease the use of alcohol, tobacco, and other drugs by youth.
- Building the capacity of substance use prevention programs and services
- Increasing protective factors and reducing risk factors among county youth by providing opioid, alcohol, and other drug use prevention, education, outreach programs and services.

Convening Partners: With approximately thirty-one members from various community sectors, the alliance is comprised of representatives from: Montgomery County Department of Health and Human Services, Montgomery County Police Department, Montgomery County Sheriff’s Office, Montgomery County Public Schools, Montgomery County Council of PTAs, faith-based organizations and other non-profit organizations.

Montgomery County Prevention Alliance meets monthly.

Outcomes

	FY'20	FY'21	FY'22
Community Forums	COVID-19 changed the landscape for in-person events so we pivoted and created [x] videos on the following topics: 1. Impact of COVID-19 on individuals with a substance use disorder, 2. The role of Narcan in reversing an opioid overdose, and 3. Available prescription drug take back locations in	In recognition of International Overdose Awareness Day (IOAD), we partnered with MCDHHS and other community partners to produce a video featuring parents who lost their children to an accidental opioid overdose. The video was created to remember the lives lost to an overdose and to help reduce the stigma associated with	Continuing to recognize IOAD, we partnered with the Montgomery County Goes Purple initiative to produce a video featuring individuals who lost their families and loved ones to an accidental overdose. Once again, the video premiered at the IOAD commemorative event and was shared via our



	Montgomery County. The videos reached a total of 62,768 Montgomery County residents.	having a substance use disorder. The video premiered at the IOAD commemorative event and was shared via our social media platforms, reaching upwards of 5000 Montgomery County residents.	social media platforms.
Under 21 Mini Grants	Sixteen organizations were awarded mini grants, ranging from \$500 - \$1000. Approximately 3,000 youth were served at these events aimed at preventing youth substance use and misuse.	Eight organizations were awarded mini grants, ranging from \$500 - \$2000. Approximately 2,902 youth were served at these events aimed at preventing youth substance use and misuse.	Eleven organizations were awarded mini grants, ranging from \$500 - \$2000. Approximately 2,704 youth were served at these events aimed at preventing youth substance use and misuse.

2. **Early Care and Education Initiatives:** Ensuring all children, zero to five years old, are healthy, happy, and learning every day so that they are prepared to succeed upon entering kindergarten.

Programs: Healthy Families Montgomery (HFM) and The Basics Montgomery

(HFM) is a nationally accredited in-home service providing early intervention parenting support to ensure that first time parents in Montgomery County begin their families successfully. For twenty-two years, this program has been successfully working to promote positive child development and positive family relationships among low-income, first-time families at high risk for poor birth outcomes by:

- Promoting positive parenting
- Enhancing child health and development
- Preventing child abuse and neglect.

The Basics is a national campaign currently in use in over thirty communities around the United States. The Collaboration Council, as the institutional home for The Basics Montgomery County, works with community partners to saturate a designated community (in this case zip code 20877) with the five Basics pillars including:

- Maximize love, manage stress
- Talk, sing, and point



- Count, group, and compare
- Explore through movement and play
- Read and Discuss stories

Convening Partners for ECE initiatives: Sheppard Pratt, Montgomery County Department of Health and Human Services, Montgomery County Public Libraries, City of Gaithersburg, Maryland Family Network, other community-based organizations.

	FY'20	FY'21	FY'22
Healthy Families Montgomery (HFM)	<p>40 new first-time mothers were enrolled in the program.</p> <p>126 families were served through 2,259 home visits.</p> <p>97% of mothers who delivered in FY'21 completed postpartum care; no repeat births to teen mothers.</p> <p>99% of children have a primary health care provider.</p> <p>93% of children up to age 2 have completed immunizations.</p> <p>100% of children were developing typically, or were receiving services for identified developmental delays.</p> <p>96% of parents demonstrated adequate knowledge of child development at follow-up.</p>	<p>45 new first-time mothers were enrolled in the program.</p> <p>121 families were served through 2,046 home visits.</p> <p>90% of mothers who delivered in FY'21 completed postpartum care; no repeat births to teen mothers.</p> <p>97% of children have a primary health care provider.</p> <p>95% of children up to age 2 have completed immunizations.</p> <p>100% of children were developing typically, or were receiving services for identified developmental delays.</p> <p>100% of parents demonstrated adequate knowledge of child development at follow-up.</p>	<p>30 new first-time mothers were enrolled in the program.</p> <p>89 families were served through 1,405 home visits.</p> <p>100% of mothers who delivered in FY'22 completed postpartum care; no repeat births to teen mothers.</p> <p>98% of children have a primary health care provider.</p> <p>97% of children up to age 2 have completed immunizations.</p> <p>100% of children were developing typically, or were receiving services for identified developmental delays.</p> <p>100% of parents demonstrated adequate knowledge of child development at follow-up.</p>



	95% of parents demonstrated adequate positive interaction. 100% of families have maintained or improved housing status (this is particularly notable due to the ongoing pandemic)	100% of parents demonstrated adequate positive interaction. 100% of families have maintained or improved housing status (this is particularly notable due to the ongoing pandemic)	100% of parents demonstrated adequate positive interaction. 100% of families have maintained or improved housing status (this is particularly notable due to the ongoing pandemic)
The Basics Montgomery	n/a	n/a	Nine community partners actively involved in enrolling parents/caregivers into The Basics Insights text messaging program. 301 and children currently enrolled in the Basics Insights program.

3. Children With Intensive Needs (CWIN): It is the mission of the CWIN program to connect children with complex needs and their families to a coordinated array of community services and supports to maintain them in their home, school and community.

Pathway to Services, a key component of the CWIN program, is a family-friendly gateway connecting children with emotional and/or behavioral health needs to the appropriate supports and services. The Pathway to Services associate provides information on low-cost or no-cost services that exist in Montgomery County, with services ranging from basic living needs, mental health resources and out of home placements. A trained family navigator from key partners at the Montgomery County Federation of Families is often assigned to assist with providing support and guidance to parents and caregivers.

The Local Care Team (LCT) is an interagency partnership of eight public child-serving agencies, with each agency appointing a member of the team to represent and advocate for the needs of families. Convened and chaired by the Collaboration Council, the LCT works to resolve the complex needs of children and youth, and problem solves to remove the barriers that hinders families from obtaining the appropriate resources that will allow children and youth to remain or return to their families and communities while improving their functioning. The LCT ensures that services are youth and family-driven, culturally appropriate and competent, and supportive of youth with behavioral and mental health challenges. Additionally, these services are designed to



promote success in school, strengthening of family bonds, and development of coping mechanism to and overcome emotional and behavioral problems.

Convening Partners: The Montgomery County Federation of Families; Local Behavioral Health Authority; Department of Behavioral Health; Developmental Disability Administration; Department of Juvenile Services; Montgomery County Child Welfare; Montgomery County Public Schools; Montgomery County WRAP Provider (*currently JSSA, non-voting member)

Local Care Team meets weekly.

	FY'20	FY'21	FY'22
Pathway to Services	<ul style="list-style-type: none"> • 592 calls received, and 80% were given referrals to community resources. • 78% reported satisfaction with the referral 	<ul style="list-style-type: none"> • 1055 calls received, and 85% were given referrals to community resources. • 88% reported satisfaction with the referral 	<ul style="list-style-type: none"> • 776 calls received, and 86% were given referrals to community resources. • 88% reported satisfaction with the referral
Local Care Team	<ul style="list-style-type: none"> • 106 cases reviewed • 52 cases referred to JSSA's wraparound program. 	<ul style="list-style-type: none"> • 95 cases reviewed • 55 cases referred to JSSA's wraparound program. 	<ul style="list-style-type: none"> • 108 cases reviewed • 35 cases referred to JSSA's wraparound program.

INITIATIVE II
infoMONTGOMERY

Initiative /Goal: Connecting Montgomery County residents to available services and resources and identifying gaps in services.

Program: infoMONTGOMERY is a collaborative effort of public and private agencies that provides detailed information about health, education and human service resources throughout



Montgomery County. It connects individuals to needed services, helps programs become aware of and connect with each other, and assists decision makers in assessing gaps in services.

Outcomes:

	FY'20	FY'21	FY'22
Organizations, Programs, Visitors and Views	648 participating agencies with over 1,600 active programs enrolled and hosted on the website. 34,631 individuals (a 75% increase from the previous year) visited the website	648 participating agencies with over 1,600 active programs enrolled and hosted on the website. 80,384 individuals (a 48% increase from the previous year) visited the website	675 participating agencies with over 1,600 active programs enrolled and hosted on the website. 88,623 individuals (a 11% increase from the previous year) visited the website
Enhancement	In collaboration with our partners, a COVID-19 pandemic page was launched in April 2022 to provide visitors detailed information on COVID-19 specific services, calendar items and announcements. Information on financial assistance, food access, healthcare, employment, housing and homelessness resources and supports for families was also made available for visitors.	Since its launch in April 2020, the COVID-19 Resources page has had close to 20,000 hits.	In FY'22, the COVID-19 Resources page has had close to 4,007 hits. The total views for the resource page was 22,029.

INITIATIVE III

Social Justice for All Youth

Initiative Goal: Ensuring historically marginalized communities receive equitable treatment.

Program Area(s): Racial and Ethnic Disparities Committee (formerly known as Disproportionate Minority Contact (DMC) Reduction)



The Racial and Ethnic Disparities Committee (R.E.D) works to address disparities for youth of color who come into contact with the juvenile justice system by looking at legislation, policies, decision-making and resource gaps that can have disparate effects on outcomes for youth as they transition into adulthood.

Convening Partners:

Montgomery County Police Department, State’s Attorney’s Office, Office of the Public Defender, Maryland Department of Juvenile Services, Juvenile Court, Montgomery County Public Schools, Department of Health and Human Services, Community-based Youth Service Providers, Maryland Juvenile Justice Monitoring Office, Maryland Park Police, Montgomery County Sheriff’s Department, Commission on Juvenile Justice, and EveryMind,

Racial and Ethnic Disparities (R.E.D) Committee meets bi-monthly.

INITIATIVE IV

Positive Youth Development

Program Area(s):

1. Out of School Time: Excel Beyond the Bell (EBB)

The EBB program is a public-private partnership offering safe, quality and accessible out-of-school time programs for Montgomery County school-aged youth, and professional development and funding support for program providers. EBB program sites are selected by our public partners based on factors such as FARMS rates and limited access to extra-curricular enrichment and recreational activities.

Convening Partners: Excel Beyond the Bell (EBB) is a public-private partnership working together with the Montgomery County Department of Recreation, Montgomery County Public Schools, and other community-based organizations. Our partners work together to determine programs offered, outreach to students and families, space, data collection and analysis, transportation and food. Outcomes:

Outcomes:

	FY’20	FY’21	FY’22
Excel Beyond The Bell (EBB)	2047 students served via 100 programs at Argyle, Col. E. Brooke Lee, Loiederman, Clemente, Forest Oak,	48 students served via 7 programs at Forest Oak and Neelsville middle schools.	1290 students served via 96 programs at Argyle, Col. E. Brooke Lee, Loiederman, Clemente, Forest Oak,



	Neelsville, Francis Scott Key and Montgomery Village middle schools		Neelsville, Francis Scott Key and Montgomery Village middle schools
--	---	--	---

2. Out of School Time: Montgomery County Community Youth Support & Engagement Programs (MoCoCYSE):

Montgomery County Youth will receive timely, appropriate, equitable, and sustainable access to developmental and social-emotional supports to support them as they seek to thrive.

Convening Partners: MoCoCYSE is a public-private partnership working together with the Montgomery County Council, Montgomery County Department of Recreation and Montgomery County Community Use of Public Facilities.

Outcomes:

	FY'20	FY'21	FY'22
Montgomery County Community Youth Support & Engagement Programs (MoCoCYSE)	n/a; MoCoCYSE was launched in FY'21	418 youth engaged in programming ranging in duration from 4-6 weeks with a 90% participation rate. 80% of youth reported that MoCoCYSE program made them feel safe and 72% reported that the program feel like they belonged and were a part of a group.	1,051 youth engaged in programming ranging in duration from 4-6 weeks with a 90% participation rate. 80% of youth reported that MoCoCYSE program made them feel safe and 72% reported that the program feel like they belonged and were a part of a group.

3. Out of School Time: Youth Sports Initiative – All Montgomery County youth will have equitable access to youth sports in the County

Convening Partners: MoCoCYSE is a public-private partnership working together with the Montgomery County Council, Montgomery County Department of Recreation and Montgomery County Community Use of Public Facilities.

Outcomes:



	FY'20	FY'21	FY'22
Youth Sports Initiative	n/a; pilot launched in FY'21.	<p>38 organizations received COVID recovery grants and program contracts to support program sustainability and increase equitable access during the height of the COVID-19 pandemic.</p> <p>708 youth participated in YSI funded programming across Montgomery County</p> <p>Success of the pilot led to the creation of the Montgomery County PLAY Montgomery initiative and the PLAY Montgomery special focus on sports accessibility equity for girls</p>	n/a; pilot was only funded for one year

4. Out of School Time: Social Emotional Learning Pilot (SEL): A social and emotional learning program that includes STEM-focused project-based learning activities and career exploration for program participants

Partner: Crittenton of Greater Washington

Outcomes

	FY'20	FY'21	FY'22
Social Emotional Learning Pilot (SEL):	<p>81 girls participated in the program at 3 Montgomery County middle schools.</p> <p>27 parents/caregivers participated in parent workshops provided through referral.</p>	<p>80 girls participated in the program at 3 Montgomery County middle schools.</p> <p>27 parents/caregivers participated in parent workshops provided through referral.</p>	<p>87 girls participated in the program at 3 Montgomery County middle schools.</p> <p>28 parents/caregivers participated in parent workshops provided through referral.</p>



5. **Evening Reporting Center:** The Evening Reporting Center is an after-school program for court-involved youth that serves as an alternative to detention. The program seeks to provide structure, healthy meals and support, during evening hours through therapeutic intervention, skill-building and service learning.

Partner: Pride Youth Services

Outcomes:

	FY'20	FY'21	FY'22
Evening Reporting Center	The Evening Reporting Center, an alternative to juvenile detention, served 12 youth. The program data regarding any new charges is unavailable, but none were reported.	The Evening Reporting Center, an alternative to juvenile detention, served 16 youth and had a 100% completion rate with no new charges being filed.	The Evening Reporting Center, an alternative to juvenile detention, served 19 youth and had a 100% completion rate with no new charges being filed.

6. **Conservation Corps:** In partnership with the Montgomery County Department of Environmental Protection and Latin American Youth Center, the Collaboration Council administers this initiative providing opportunities for young people ages 17-24 to gain hands-on experience in the environmental sector by working on conservation projects in the field (including County, State, and National Parks as well as in the nonprofit environmental community), while balancing this with work in the classroom as they work toward gaining their GEDs.

Outcomes:

	FY'20	FY'21	FY'22
Conservation Corps	34 youth were enrolled in the program.	30 youth were enrolled in the program.	24 youth were enrolled in the program

*Enrolled youth spend a total of 631 hours on work sites and 582 hours participating in educational courses.

Convening Partner: Latin American Youth Center



7. MoCo ReConnect Reengagement Center – Youth Advisory Board

MoCo ReConnect is a resource for youth and young adults, ages 16 to 24, who have either dropped out of or stopped attending high school. MoCo Reconnect is a collaborative of agencies in Montgomery County who provide outreach, case management, education, training, and employment services to youth and young adults. Partners help youth reconnect to educational opportunities, such as pursuing a high school diploma or attaining a GED certificate, college coursework, and job-readiness training.

MoCo Reconnect has a Youth Advisory Board (YAB), whose purpose is to advise MoCo ReConnect’s leadership team on youth related topics and issues. The YAB is a group of youth who are committed to being ambassadors for the organization, and who are engaged in their communities by demonstrating leadership skills, and highlighting the organization’s mission. The YAB provides authentic youth voice and equip youth with the necessary tools and opportunities to be emerging leaders.

Convening Partners: SMYAL, LAYC, Sheppard Pratt

- MoCo ReConnect coalition meets bi-monthly
- Youth Advisory Board (YAB) meets monthly

Outcomes:

	<u>FY'20</u>	<u>FY'21</u>	<u>FY'22</u>
Reengagement Center	87 of 125 young adults referred to the Reengagement Center received services with 100% of service recipients reporting high satisfaction with services and the referral process. 71% of youth were reengaged with education or career pathways and 69% of youth completed education and/or vocational activities.	172 of 341 young adults referred to the Reengagement Center received services with 82% of service recipients reporting high satisfaction with services and the referral process. 18% of youth were reengaged with education or career pathways and 4% of youth completed education and/or vocational activities	154 of 217 young adults referred to the Reengagement Center received services with 100% of service recipients reporting high satisfaction with services and the referral process. 86% of youth were reengaged with education or career pathways and 86% of youth completed education and/or vocational activities



INITIATIVE V

Community of Practice/Community of Engagement

Advancing Youth Development Training: Building capacity of youth development practitioners through professional learning opportunities.

	FY'20	FY'21	FY'22
Community of Practice	<ul style="list-style-type: none"> • Forty-seven professional development opportunities offered • 1,226 youth development professionals served • 93% of participants responded that they gained knowledge from participating in the trainings. 	<ul style="list-style-type: none"> • Sixty-six professional development opportunities offered • 1,324 youth development professionals served • 89% of participants responded that they gained knowledge from participating in the trainings. 	<ul style="list-style-type: none"> • Eight professional development opportunities offered • 176 youth development professionals served • 55% of participants responded that they gained knowledge from participating in the trainings. <p><i>*CoP has been recreated as CoE for FY22, with a focus on AYD training for youth development professional and community engagement activities</i></p>

Community of Engagement:

The CoE is a reimagining of our Community of Practice, which had a focus on training and support for nonprofit agencies regarding their work with children and families. The CoE will also provide trainings but will highlight and focus on the expressed needs and wants of the full community. The work will detail community forums, listening sessions, community led trainings for nonprofits, data collection in the interest of community advocacy, and any other work that our partners express interest in.



Outcomes:

	FY'20	FY'21	FY'22
Community of Engagement	n/a	n/a	The CoE was established in late FY'22. Three community conversations (<i>"Conversations at the Intersection"</i>) have been held to date including two conversations on implicit bias, identity and intersectionality, and a third on antisemitism and anti-Black racism. Guest speakers included Dr. Rodney Glasgow, Dira Treadance, and Council VP Andrew Friedson.

MoCo Boost Guaranteed Income Pilot: Launched in FY22 by Montgomery County with Collaboration Council as the nonprofit partner. Participants include 100 households recently served by the Montgomery County Homeless Continuum of Care and 200 participants with at least one child/dependent who had previously sought assistance from the County during the COVID 19 pandemic.

Outcomes:

	FY'20	FY'21	FY'22
MoCo Boost	n/a	n/a	1 multilingual website created for pilot 2 videos created for community outreach and awareness 1 County workgroup convened 1 Community subcommittee convened 3-5 social capital events planned for FY23