



Committee: Directly to Council
Committee Review: N/A
Staff: Marlene Michaelson, Executive Director
Purpose: Receive briefing and have discussion – no vote expected
Keywords: Coronavirus, COVID-19, Recovery

AGENDA ITEM #3
July 13, 2021
Discussion

SUBJECT

COVID Recovery Update

EXPECTED ATTENDEES

Dr. Earl Stoddard, Director, Office of Emergency Management and Homeland Security

COUNCIL DECISION POINTS & COMMITTEE RECOMMENDATION

None

DESCRIPTION/ISSUE

The Council will receive an update and have a discussion on the County's COVID-19 recovery framework.

SUMMARY OF KEY DISCUSSION POINTS

- The presentation will provide a recovery status update for the County overall and within six key mission areas:
 - Government Operations
 - Economic Revitalization
 - Health and Human Services
 - Housing
 - Education, Youth Programs, Childcare, and Early Childhood Education
 - Food Resilience

This report contains:

COVID Recovery Framework Presentation

Alternative format requests for people with disabilities. If you need assistance accessing this report you may [submit alternative format requests](#) to the ADA Compliance Manager. The ADA Compliance Manager can also be reached at 240-777-6197 (TTY 240-777-6196) or at adacompliance@montgomerycountymd.gov

Recovery Framework

Council Work Session

July 13, 2021

Current Challenges

- **Government Services**

- Retirements
- Reopening
- Teleworking

- **Housing**

- Potential Housing Crisis
- End of Moratorium

- **Economic Revitalization**

- Business survival
- Loss of businesses
- Workplace shortages & challenges
- Understanding changes in consumer behavior

- **Health & Human Services**

- Behavioral health issues
- Stress on health infrastructure
- Health equity

- **Education & Youth**

- Behavioral health issues on youth
- Learning loss
- Childcare challenges

- **Food Resilience**

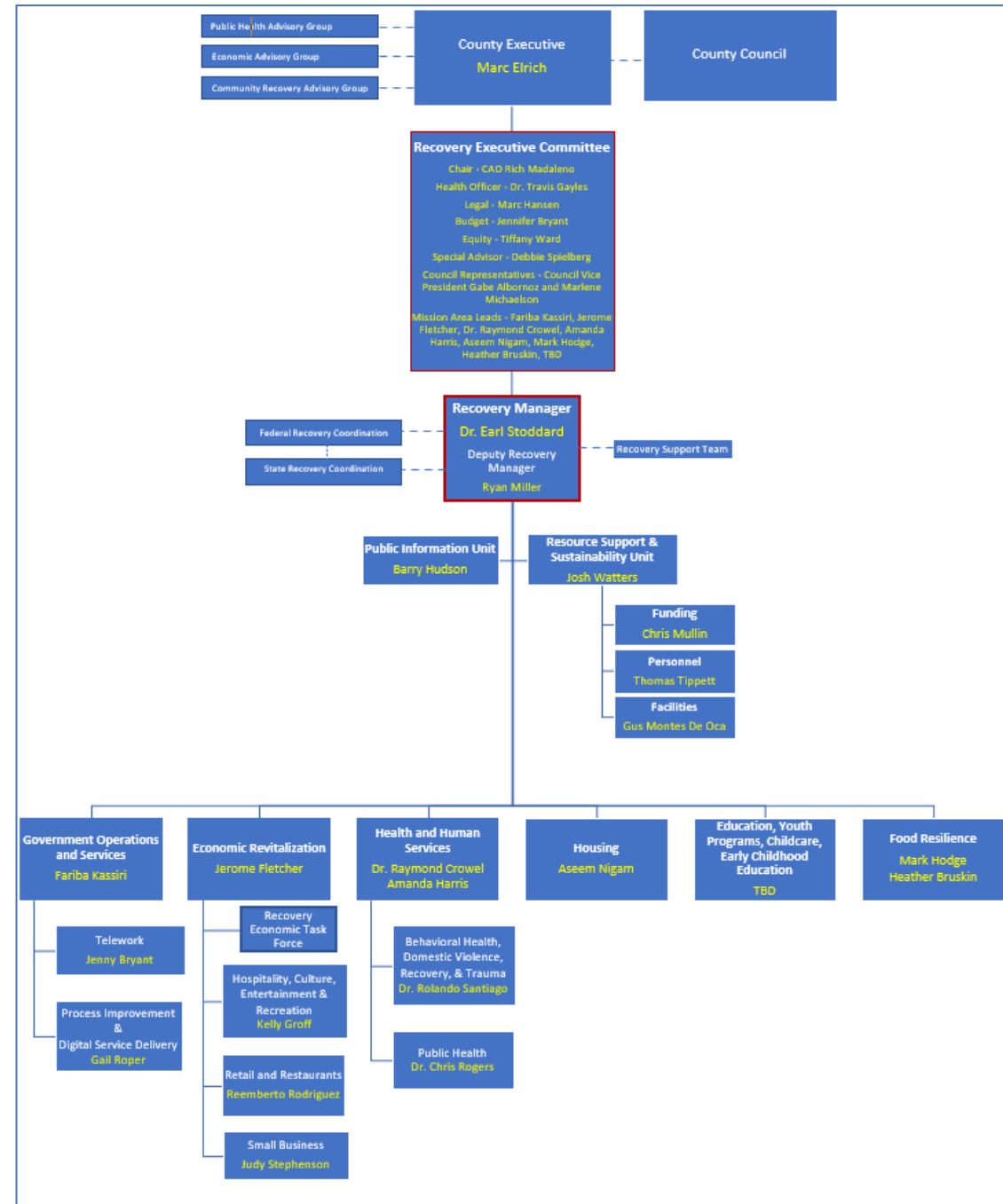
- Food insecurity
- Long-term sustainability

Key Milestones

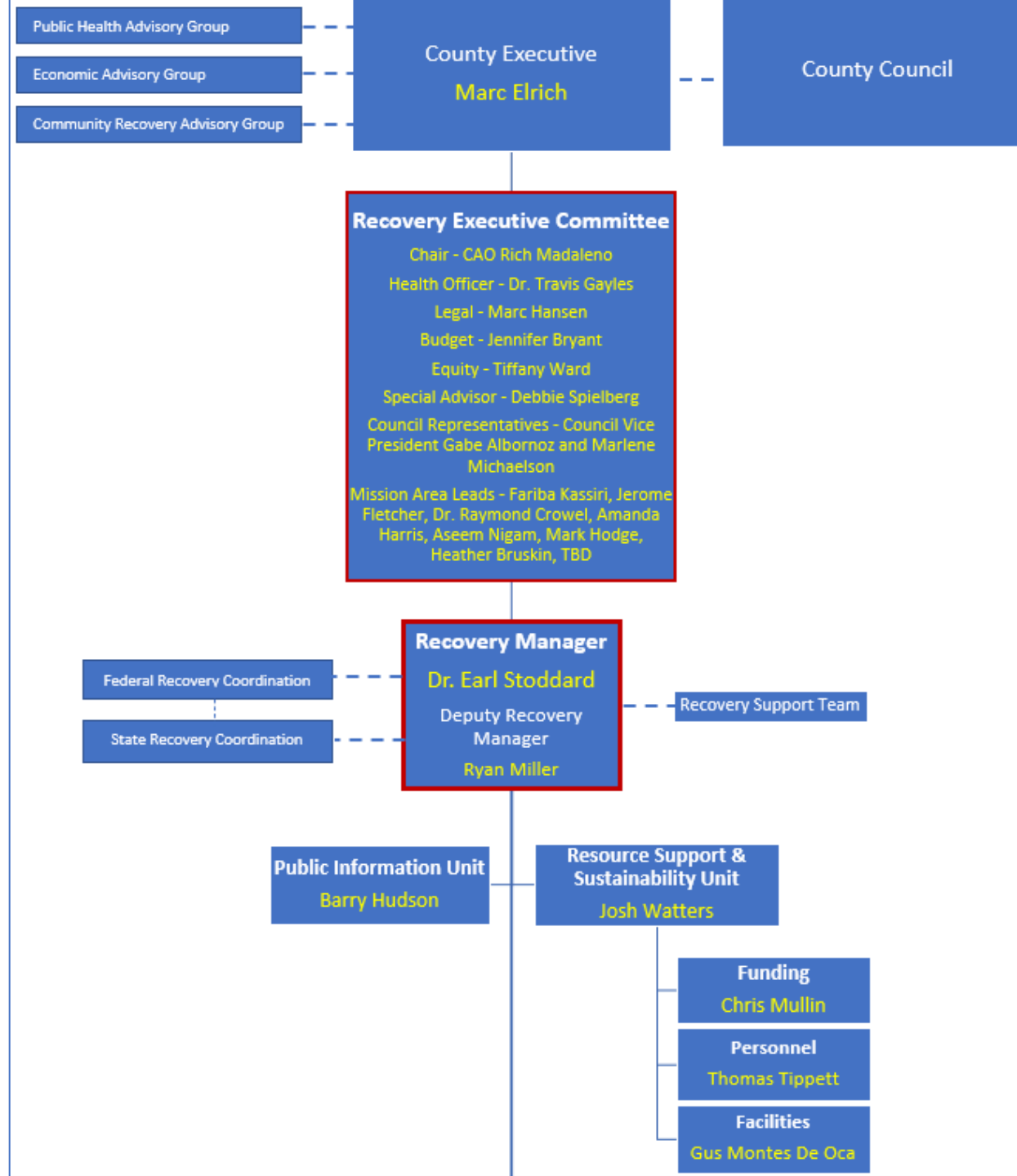
Transition: Short-term to Intermediate Recovery

- Transitioning from short-term recovery efforts to intermediate recovery.
- Intermediate timeframe is now until end of year.
- Conducting data collection and analysis to better inform how we allocate resources and prioritize programs.
- Integration of behavioral health science.
- Transitioning includes demobilizing, integrating, and expanding work groups and mission areas to serve current needs.
- Long-term recovery will involve the integration of recovery into departmental functions.

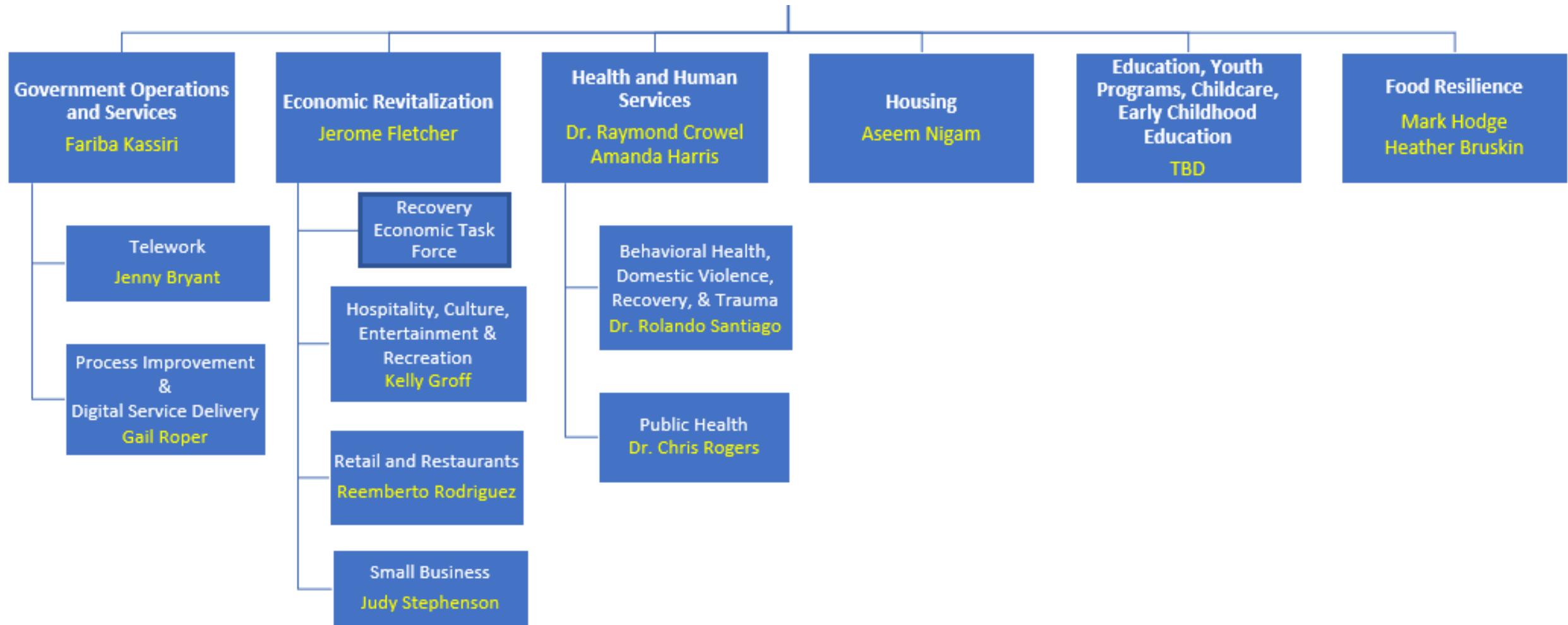
Intermediate Recovery Framework



Intermediate Recovery Framework

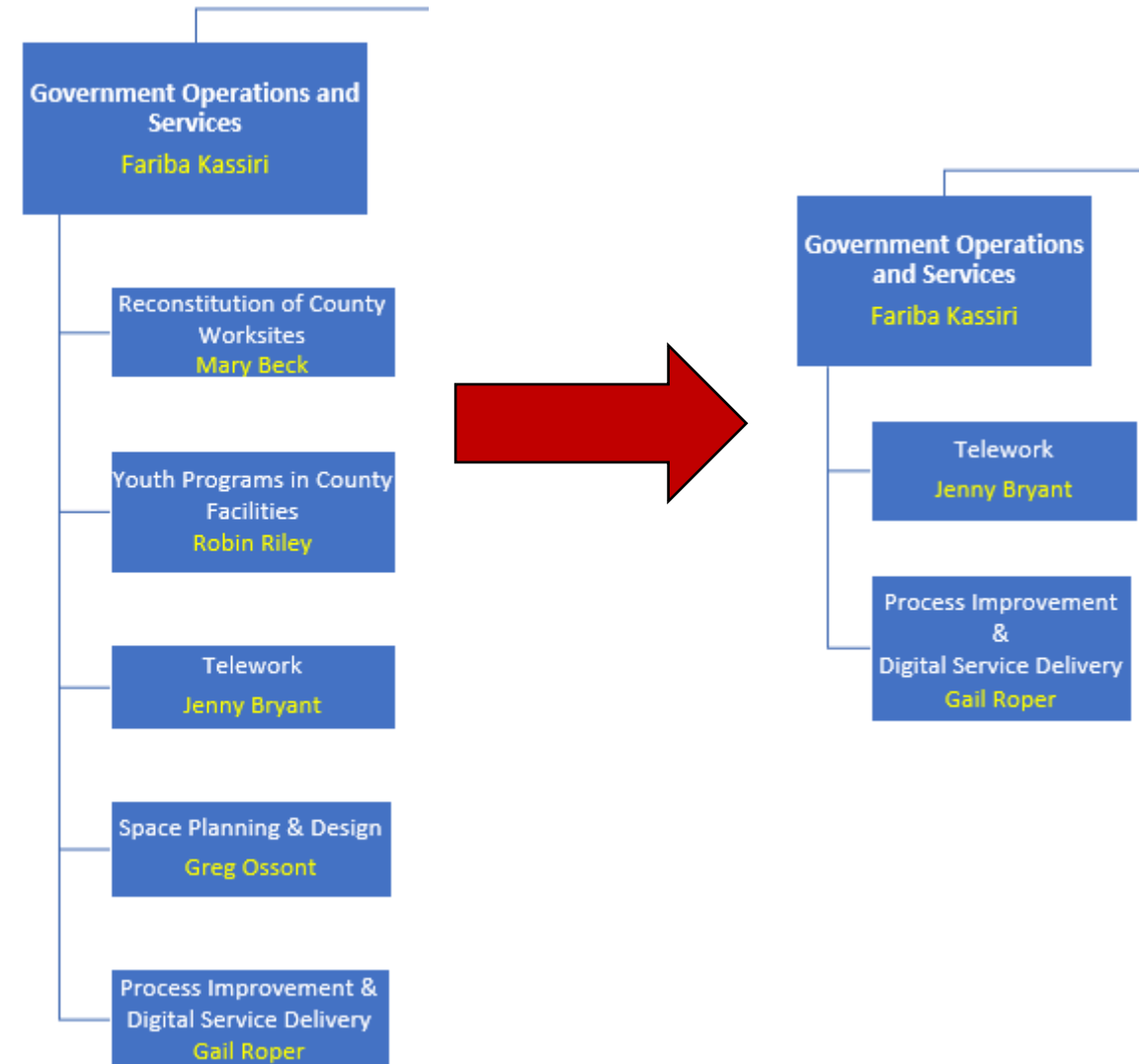


Intermediate Recovery Framework



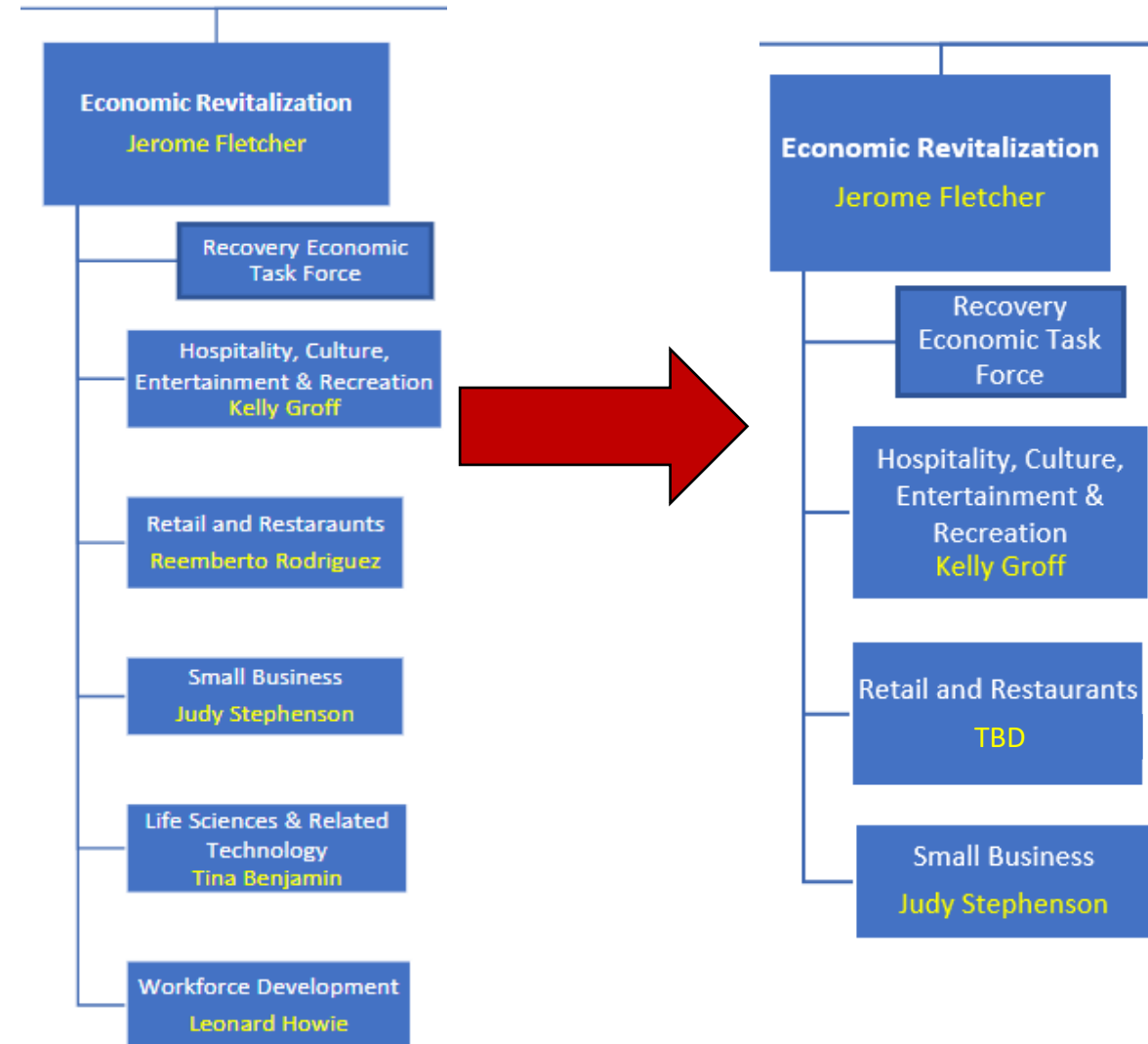
Government Operations

- Reconstitution of County Worksites demobilized as the County resumed in-person services
- Youth Programs in County facilities is demobilizing.
 - Much of the work is shifted to REC daily functions.
 - REC will participate in new Educations, Youth Programs, Childcare, and Early Childhood Education Mission Area.
- Space Planning and Design Workgroup functions have been absorbed into the daily functions and projects of DGS.



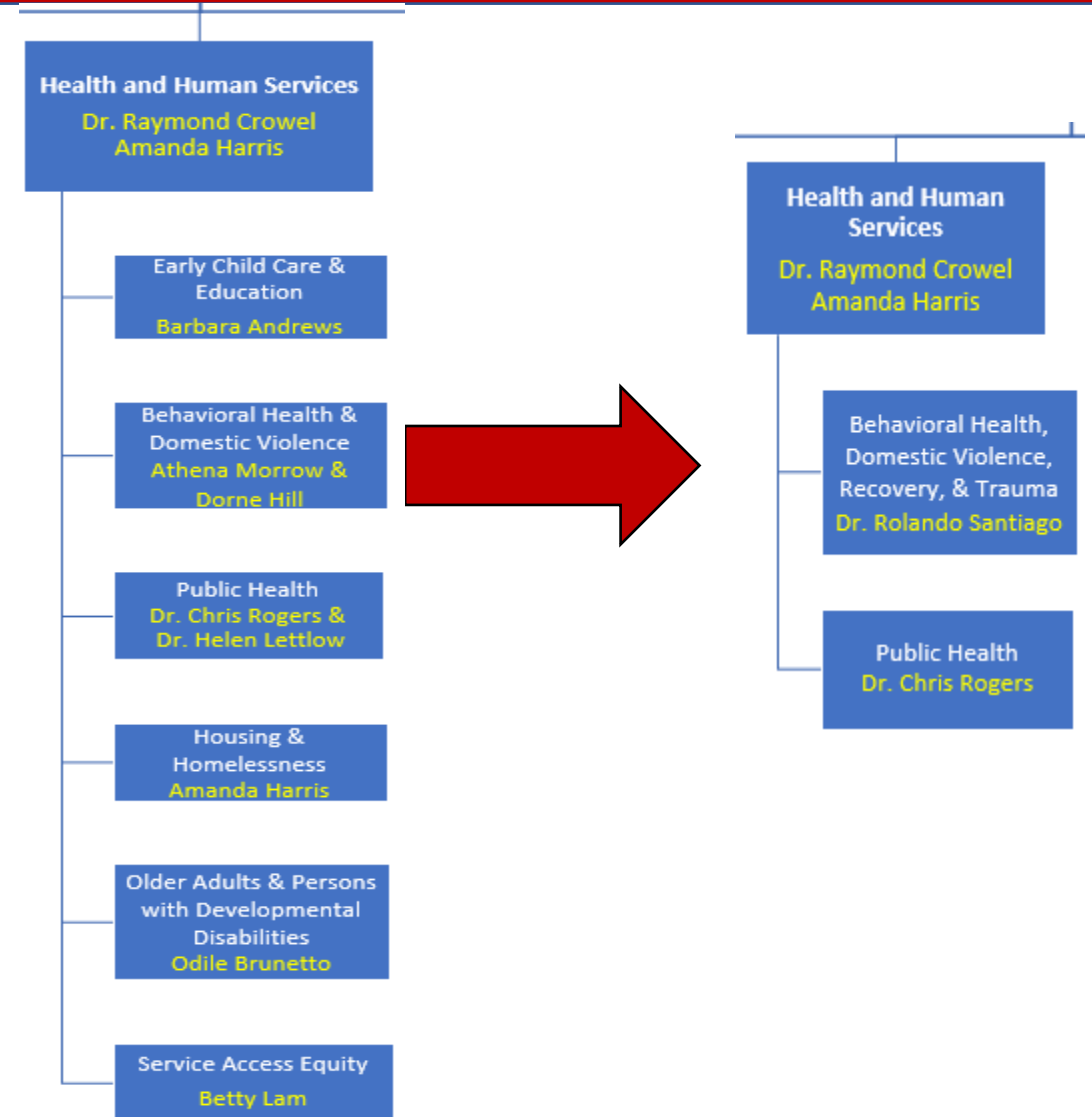
Economic Revitalization

- The Life Sciences & Related Technology and the Workforce Development Workgroups demobilized after submitting detailed reports with recovery actions for the County.
- Subgroup in Hospitality, Culture, Entertainment & Recreation on Streeter.



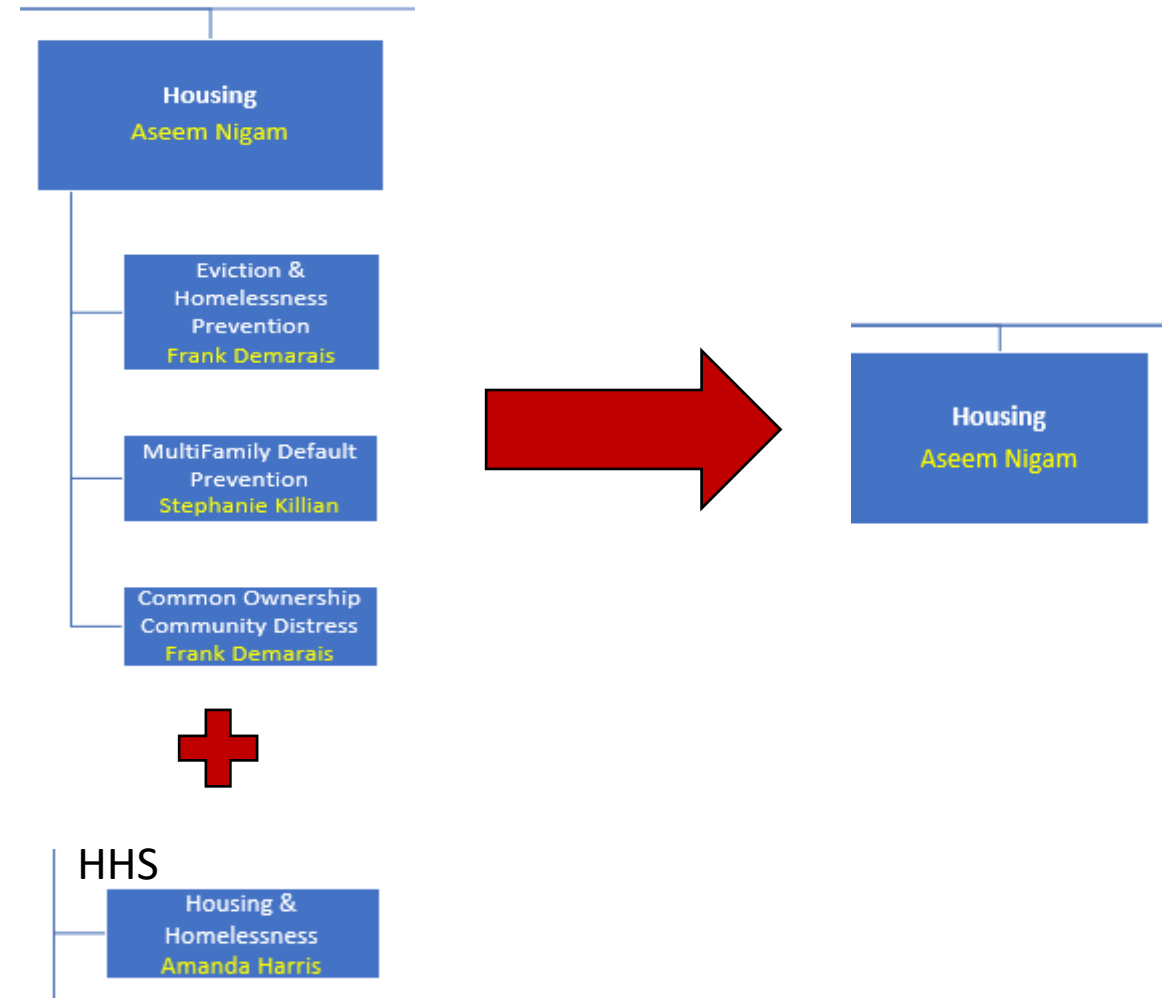
Health and Human Services

- ECE Workgroup will shift to updated Education, Youth Programs, Childcare and Early Childhood Education Mission Area.
- Housing & Homelessness workgroup will shift to updated Housing Mission Area.
- The Older Adults & Persons with Developmental Disabilities and the Service Access Equity Workgroups both demobilized after submitting reports with recovery actions.



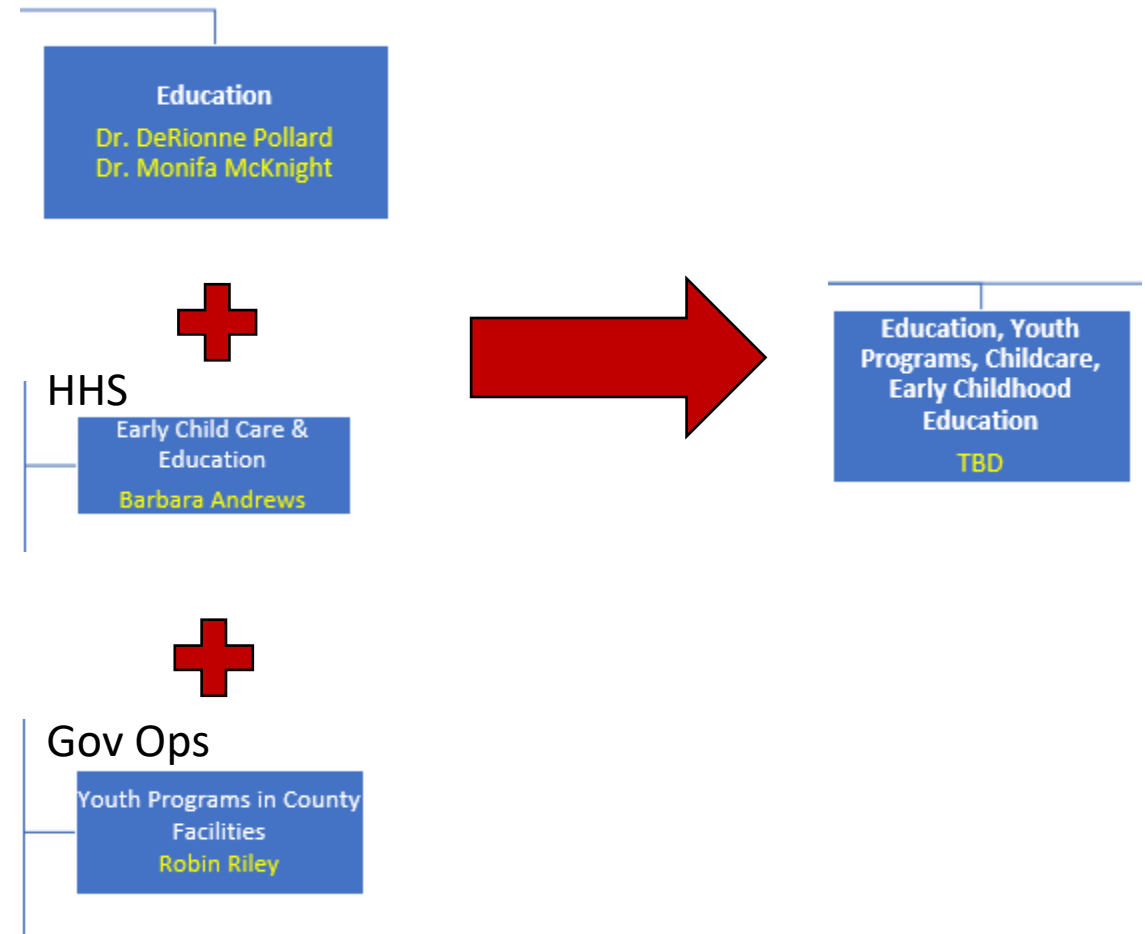
Housing

- The Workgroups in the Housing Mission Area will be combined on a strategic level.
- The updated Housing Mission Area will encompass the full housing continuum including: rentals, homelessness prevention, low-income housing, market rate rental, single family home ownership, commercial and investment housing, etc. to share data and tools to look at the COVID-19 impact on housing in recovery.



Education, Youth Programs, Childcare, and Early Childhood Education

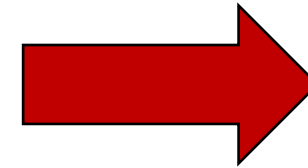
- The Education Mission Area will shift to encompass youth programs, childcare, and early childhood education.
- Addressing intersectional issues and challenges.
- With Drs. Pollard and McKnight taking new positions, we're working to identify a new facilitator for this Mission Area.



Food Resilience

- In the Response Phase, the Food Security Task Force (FSTF) operated within their own framework.
- As they look at how the FSTF will move from response into long-term sustainability and food resilience, they are shifting into the recovery framework as well.
- The Mission Area will be led by the team who have been heavily involved in the FSTF response.

Response framework for Food Security Task Force



Integrates into the
Internal Recovery
Framework for
Food Resilience

Questions?