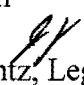


Worksession

MEMORANDUM

November 4, 2011

TO: County Council

FROM: Jeffrey L. Zyontz,  Legislative Attorney

SUBJECT: Worksession - Redistricting Commission Report
Bill 31-11, Council Districts – Boundaries

On October 4, the Redistricting Commission presented its report to Council, and Bill 31-11, affirming the Commission's plan, was introduced. The public hearing on November 1, 2011 concerned both the Commission's redistricting plan and Bill 31-11. The Council heard from only 2 speakers. One speaker recommended keeping the Capitol View area in District 5. The other speaker addressed the Redistricting Commission's process and suggested that the concerns of rural Montgomery County would be better served by being in a single Council district. Council President Ervin requested knowing more about school boundaries (see © 28).

A Council worksession is scheduled for November 8, 2011. The Council will have redistricting software available to see small areas in detail and to test the effect of any changes to the map recommended by the Redistricting Commission. The Council is tentatively scheduled to take action on Bill 31-11 on November 29, 2011.

Charter Requirements

The Charter requires the 5 Council Districts to be compact, contiguous, and substantially equal in population.¹ Staff believes that the Commission proposed districts meet those standards. This conclusion should not be taken to mean that the Commission's plan is the only way to meet Charter standards. The Council can approve different district boundaries that also are compact, contiguous, and substantially equal in population.

Compactness for the purpose of redistricting is a judgment that Federal Courts have left to legislatures. It is not a mathematical standard. Mathematically, the most compact district would be a perfect circle.

¹ Charter §103: Montgomery County shall be divided into five Council districts for the purpose of nominating and electing five members of the Council. Each district shall be compact in form and be composed of adjoining territory. Populations of the Council districts shall be substantially equal.

The least compact district would be a district one block wide for its entire length. The Commission used 2010 precincts to construct their proposed districts. That decision ensured that proposed districts are never narrower than the width of a precinct at any point.

District Boundary Descriptions

Six pages of the Commission's report are devoted to describing the proposed district boundaries by streets, streams, rivers, municipalities, counties, and sometimes individual properties. As tedious as it may be, it is the written description of the boundaries that directs the Board of Elections in preparing ballots. The Commission eased the work of the Board by using 2010 precincts. The descriptions are faithful to precinct lines. In the area south of Norbeck Road, west of Bailey's Lane and bounded by Leisure World, the precinct boundary used by the Board of elections puts the residents in precinct 13-54. That is different than the maps used by the Commission that had all of the property fronting on Norbeck Road in precinct 13-49. The written description conforms to the Board of Election's line. If the Council wishes to change that, it can do so by amending Bill 31-11.²

<u>This packet includes</u>	<u>© page</u>
Redistricting Commission Report	
Bill 31-11	1 – 21
Legislative Request Report	22
Testimony	
Capitol View Park	23 – 26
Henry Kahwaty	27
President Ervin's proposed districts with schools and service areas	28

G:\MISC\Redistricting_Commission_2011\Report\Redistricting Commission Worksession Memo.doc

² There are two other instances where the mapped boundaries used by the Commission were slightly different than official precinct boundaries. Neither of those areas concerned any resident population.

Montgomery County Redistricting Commission Report

October 2011



**REPORT OF THE MONTGOMERY COUNTY
COMMISSION ON REDISTRICTING 2011**

Table of Contents

Redistricting Commissioners	1
Compliance with Charter Requirements and Opening Meetings Law	1
Redistricting Law	2
Demographics	
Total Population	2
Race and Ethnicity	3
Adjustments for Prison Populations.....	4
Matching Demographics and Election Law.....	5
Recommended Redistricting Plan	5
Map	6
Rationale	7
Proposed District Demographics	
Total Adjusted Population	8
Race and Ethnicity	9
Proposed Districts by 2010 Precincts	10
Proposed District Descriptions	12
Minority Statement.....	18
Appendices	
Appendix A: Commission meeting dates	A-1
Appendix B: Charter Provisions Concerning Redistricting.....	B-1
Appendix C: Memorandum from Assistant County Attorney Erin Ashbarry	C-1
Appendix D: M-NCPPC January 2011 Trends Report.....	D-1

2011 Redistricting Commission Membership

<u>Name</u>	<u>District</u>	<u>Party Affiliation</u>
J. Lee Annis, Jr	District 4	Republican
Cherri Branson	District 5	Democrat
Henry J. Kahwaty (Vice Chair)	District 2	Republican
Carmen Ortiz Larsen	District 1	Democrat
Jacqueline L. Phillips	District 1	Republican
Jonathan S. Shurberg	District 5	Democrat
Don Spence	District 2	Democrat
Jason Tai (Chair)	District 3	Democrat
Patti Jo Witham	District 3	Republican

Compliance with Charter Requirements

Only the Republican and Democratic parties polled enough votes to qualify for appointment to the Commission. The Council appointed members from lists provided by the central committee of each party. Each Council district was represented on the Commission. Each district had no more than 2 representatives. The Council appointed the Commissioners by Resolution Number 17-20 on January 18, 2011.

The first meeting of the Commission was on February 17, 2011. Jason Tai was elected Chair and Henry Kahwaty was elected Vice Chair.

Compliance with Open Meetings Law

All Commission meetings were subject to the state open meetings law (required by Montgomery Code §2-149). All of the Commission's business was conducted in public. The parliamentary procedures of Robert's Rules of Order governed when it was necessary to take formal action or decide controversial matters. Absentee voting by Commissioners was not permitted. The public was given notice of all meetings, and the meetings themselves were open to the public. The Commission provided an opportunity for public comment at the end of each of its meetings. The approved minutes of the meetings were available to the public. Audio recordings of Commission meetings were archived.

From the very onset of the redistricting process, the public was welcomed, indeed encouraged, to get involved and participate. The Commission sought public participation in every way possible. Press releases were issued to give notice of the Commission's meetings. Attendance and participation at the meetings afforded one level of participation, while letters and testimony at the public forums presented yet another opportunity to express concerns. The Commission used a website and a separate email address to solicit comments. All citizens associations and homeowners associations were given email notice of the Commission's two public forums.

Redistricting Law

Assistant County Attorney Erin Ashbarry educated the Commission on aspects of election law that affect redistricting. Her March 24, 2011 memorandum to the Commission is attached to this report. The County Charter requires the Commission to present a redistricting plan for the County that divides the County into five Council districts for the purpose of nominating and electing five members of the Council. Each district must be compact in form and be composed of adjoining territory. Populations of the Council districts must be substantially equal.

The Commission was made aware that Council districts must comply with federal laws of equality in voting, as mandated by the 14th and 15th Amendments to the U.S. Constitution and the 1965 Voting Rights Act. The 14th Amendment mandates that districts be of nearly equal population. The Equal Protection Clause of the 14th Amendment also prohibits using race as the predominant factor in districting. The intentional segregation of voters based on race in a manner that lessens the weight of their vote is illegal. The 15th Amendment prohibits abridging the right to vote based on race. The Voting Rights Act enforces the 15th Amendment and prohibits the denial of equal opportunity to participate in the political process and elect candidates of the voter's choice. The Commission was instructed that the difference between the district with the fewest people and the district with the most people may not exceed 10% of the ideal district's population without triggering strict scrutiny by a reviewing court.

The "No Representation Without Population Act" became Maryland law in 2010 (SB 400). Under that act, the population used for redistricting must be adjusted by counting prisoners at their last known residences before incarceration, not at the locations of their prisons.

The Commission reviewed 2010 census data as it related to 2001 Council districts. The following material was published in the Planning Department's January 2011 "Trend Sheet", which is also attached to this report.

Demographics¹ – Total Population

In the last decade, Montgomery County's population grew by 11.3 percent, gaining almost 100,000 people since 2000. As reported by the U.S. Census Bureau, the County's population was 971,777 in 2010. In 2000, the population was 873,341.

¹ The Commission was assisted by Montgomery County Planning Department Staff, Pamela Zorich, and Jay Mukherjee. The Commission could not have done its demographic and mapping work without their able assistance.

COUNCIL DISTRICT POPULATION CHANGE¹
Total Population 2000-2010

Council Districts	2000	% of total	2010	% of total	Gain	% change
District 1	174,556	20.0%	185,462	19.1%	10,906	6.2%
District 2	177,846	20.4%	214,315	22.1%	36,469	20.5%
District 3	172,870	19.8%	197,661	20.3%	24,791	14.3%
District 4	173,601	19.9%	189,652	19.5%	16,051	9.2%
District 5	174,468	20.0%	184,687	19.0%	10,219	5.9%
Total	873,341	100.0%	971,777	100.0%	98,436	11.3%

¹ District boundaries established 2001

Source: Census 2010 Redistricting Data (Public Law 94-171), U.S. Census Bureau; prepared by Montgomery County Planning Department, M-NCPPC.

The County's population grew more diverse over the last decade, becoming a majority minority county for the first time. Some 50.7 percent of the population was either non-white or Hispanic. Hispanics were the largest minority group, comprising 17.0 percent of the population. African Americans, comprising 16.6 percent of the population, were the second largest minority.

All Council districts gained population between 2000 and 2010; however, the amount of population growth in each Council district was different. Council District 2 had the greatest increase (20.5 percent), gaining 36,469 people between 2000 and 2010. Germantown and Clarksburg, two of the County's fastest-growing communities, accounted for 86 percent of the population increase in District 2. Council Districts 1 and 5 each grew by about 6 percent. District 1 added 10,906 people, to total 185,462; District 5, the County's least populated district at 184,687, gained 10,219 people.

Demographics – Race and Ethnicity

The five Council districts reflect the increasing diversity that characterizes Montgomery County in 2010. Except for District 1, all Council districts are majority minority districts when white Hispanic populations are included as a minority population. The highest concentration of minorities, at 61.4 percent, was in District 5. Hispanic populations make up more than 25 percent of the population in District 5. The highest concentration of African-Americans was in District 4, where that population accounted for more than 25 percent of the District's population. The total minority population in District 4 was 60.4 percent. District 3 had the highest concentration of Asians and Pacific Islanders – 20.7 percent.

2000 Council Districts with 2010 Population

	Total Population	Hispanic or Latino	Black	Asian & Pacific Islander	Other Race	Total Minority	Non-Hispanic White
District 1	185,462	13,869	7,887	22,339	5,319	49,414	136,048
District 2	214,315	33,525	36,422	31,572	7,176	108,695	105,620
District 3	197,661	35,775	23,757	40,972	6,509	107,013	90,648
District 4	189,652	35,152	48,342	25,084	5,998	114,576	75,076
District 5	184,687	47,077	45,281	15,137	5,819	113,314	71,373
Total All	971,777	165,161	161,689	135,104	30,821	493,012	478,765

	Total Population %	Hispanic or Latino %	Black %	Asian & Pacific Islander %	Other Race %	Total Minority %	Non-Hispanic White %
District 1	100.0	7.5	4.3	12.0	2.9	26.6	73.4
District 2	100.0	15.6	17.0	14.7	3.3	50.7	49.3
District 3	100.0	18.1	12.0	20.7	3.3	54.1	45.9
District 4	100.0	18.5	25.5	13.2	3.2	60.4	39.6
District 5	100.0	25.5	24.5	8.2	3.2	61.4	38.6
Total All	100.0	17.0	16.6	13.9	3.2	50.7	49.3

* District boundaries established 2001

Source: *Census 2010 Redistricting Data (Public Law 94-171)*, U.S. Census Bureau; prepared by Montgomery County Planning Department, M-NCPPC.

Demographics – Adjustments for Prison Populations

State law (SB 400, enacted in 2010) requires redistricting in Maryland to use population numbers that allocate prisoners to their last residences before incarceration. People incarcerated from out-of-state were excluded from the adjusted population numbers. That adjustment increased the County's population by 561 people; which amounted to .06 percent of the population. All Council districts gained population by that adjustment. The adjustment did not change individual Council district populations by more than 151 people. The target population for new Council districts is 194,468. This is equal to the County's total adjusted population divided by 5.

Council District ¹	Total Population 2000	2000 %	2010	2010 Adjusted ²	2010 Adjusted ² %	Difference from Target	% Variation from Target
District 1	174,556	20.0	185,462	185,474	19.1	-8,994	-4.6
District 2	177,846	20.4	214,315	214,466	22.1	19,998	10.3
District 3	172,870	19.8	197,661	197,789	20.3	3,321	1.7
District 4	173,601	19.9	189,652	189,774	19.5	-4,694	-2.4
District 5	174,468	20.0	184,687	184,835	19.0	-9,633	-5.0
County Total	873,341	100.0	971,777	972,338	100.0		
Target District (adjusted)		194,468					
Maximum % Variation		15.2%					
Average % Variation		4.8%					

Source: Adjusted 2010 Redistricting Data, Maryland Dept. of Planning; Redistricting Data (PL 94-171) 2000 & 2010 Census, U.S. Census Bureau; Center for Research & Information Systems, prepared by Montgomery County Department of Planning, M-NCPPC (3/23/11).

¹ Current Council Districts adopted in 2001.

² For the purposes of Congressional, State, and local redistricting, the U.S. Census Redistricting data must be adjusted by the State of Maryland pursuant to the Maryland law passed in 2010, the "No Representation Without Population Act" (SB 400, HB 496). Generally, the law requires that the census data must be adjusted to reassign Maryland residents in correctional institutions to their last known address and to exclude out-of-state residents in correctional institutions from redistricting. The adjusted counts used for redistricting were certified by the Secretaries of the Maryland Department of Planning and the Department of Public Safety and Correctional Services, and the Executive Director of the Department of Legislative Services, on March 22, 2011.

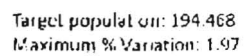
Matching Demographics and Election Law

Council district boundaries must change. The 2010 population of District 2 is 10.3 % over the "target" district population of 194,468. Council District 5's 2010 population was 5.0% below the target population. The total difference between the district with the most population and the district with the least population was more than 15% of the target population; any difference larger than 10 percent is too far from the principle of one man, one vote to be sustained.

Commission-Recommended Redistricting Plan

The following map depicts the Redistricting Plan recommended by the Commission.

September 9, 2011



Rationale

The Commission's Redistricting Plan is based on the following:

- 1) The districts are substantially equal in population, using census data as adjusted for the original residents of prison population.
- 2) The districts are compact.
- 3) The districts are contiguous.
- 4) The Plan keeps all municipalities in single districts.
- 5) The Plan puts the unincorporated areas of Germantown, Clarksburg, Montgomery Village, Olney, Wheaton, Four Corners, Burtonsville, White Oak, Fairland, and Potomac in single districts.
- 6) The Plan puts residents along River Road and Route 29 into single districts.
- 7) The Plan uses 2010 precincts as its building blocks to districts.

The Commission's Plan was supported in public testimony by the League of Woman voters. The Commission Plan equalized population to a greater degree than an alternative plan considered by the Commission (the Kahwaty Plan) and created more compact districts.

The Commission's Plan keeps Germantown in a single district whereas the Kahwaty Plan would have split Germantown north and south of Route 118.

Both the Commission's plan and the Kahwaty plan rejected the testimony of the Greater Olney Civic Association to keep Olney split between Council Districts.

Proposed District Demographics – Total Adjusted Population

Population in Proposed Districts (adjusted population)

Council District	2011 Proposed Districts ¹		Difference from Target	% Variation from Target
	Adjusted ²	%		
District 1	196,230	20.2%	1,762	0.91%
District 2	192,408	19.8%	-2,060	-1.06%
District 3	194,406	20.0%	-62	-0.03%
District 4	194,841	20.0%	373	0.19%
District 5	194,453	20.0%	-15	-0.01%
County Total	972,338	100.0%		
Target District				
Population³		194,468		
Maximum % Variation⁴		1.97%		
Average % Variation⁵		0.44%		

Source: Montgomery County Commission on Council Redistricting; Adjusted 2010 Redistricting Data, Maryland Dept. of Planning; Redistricting Data (PL 94-171) 2000 U.S. Census, U.S. Census Bureau; Center for Research & Information Systems, Montgomery County Department of Planning. M-NCPPC (9/12/11).

¹ Proposed 2011 County Council Redistricting Plan approved by the Redistricting Commission on September 9, 2011.

² For the purposes of Congressional, State, and local redistricting, the U.S. Census Redistricting data must be adjusted by the State of Maryland pursuant to the Maryland law passed in 2010, the "No Representation Without Population Act" (SB 400, HB 496). Generally, the law requires that the census data must be adjusted to reassign Maryland residents in correctional institutions to their last known address and to exclude out-of-state residents in correctional institutions from redistricting. The adjusted counts used for redistricting were certified by the Secretaries of the Maryland Department of Planning and the Department of Public Safety and Correctional Services, and the Executive Director of the Department of Legislative Services, on March 22, 2011.

³ **Target district population** is the total prisoner-adjusted County population, divided equally among the five Council districts. Under this formula, each district has a target population of 194,468.

⁴ **Maximum percentage variation** is the sum of the absolute values of percentage variation of the two districts which are most over-represented and most under-represented. In this case, the district with the largest population, District 1, exceeds the ideal by .91%, and the district with the smallest population, District 2, differs by -1.06%. Summing the absolute values equals 1.97%, which is the maximum percentage variation.

⁵ **Average percentage variation** is the sum of the absolute values of each district's percentage variation from the ideal divided by the number of districts.

Proposed District Demographics – Race and Ethnicity

For purposes of description and not as the primary consideration in proposing new district boundaries, the Redistricting Commission provides the following information on race and ethnicity for its submitted Redistricting Plan. The highest concentration of minority populations, at 65 percent, will be in District 5. African American populations make up almost 32 percent of the population in the District. That will be the highest concentration of African Americans. The highest concentration of Hispanic populations will be in District 4, where those populations will account for 25 percent of the District's population. The total minority population in District 4 will be 58.6 percent. District 3 will have the highest concentration of Asians and Pacific Islanders – 18.9 percent. District 1 will continue to have the highest non-Hispanic white population – 147,701 people, comprising 75 percent of the District.

Proposed 2011 Council District¹	Adjusted 2010 Population	Hispanic							
		2010 Population	(not Adjusted)	% of district					
	District 1	196,230	196,214	13,143	6.7%				
	District 2	192,408	192,264	32,515	16.9%				
	District 3	194,406	194,290	33,385	17.2%				
	District 4	194,841	194,703	48,590	25.0%				
	District 5	194,453	194,306	37,765	19.4%				
Total	972,338	971,777	165,398	17.0%					
Proposed 2011 Council District	Non – Hispanic (not adjusted)								
	White	% of district	Black or African American	% of district	Asian & Pacific Islander	% of district	Other Race	% of district	
District 1	147,701	75.3%	8,429	4.3%	21,373	10.9%	5,568	2.8%	
District 2	85,980	44.7%	34,173	17.8%	32,843	17.1%	6,753	3.5%	
District 3	96,419	49.6%	21,753	11.2%	36,671	18.9%	6,062	3.1%	
District 4	80,548	41.4%	35,799	18.4%	23,780	12.2%	5,986	3.1%	
District 5	68,117	35.1%	61,535	31.7%	20,437	10.5%	6,452	3.3%	
Total	478,765	49.3%	161,689	16.6%	135,104	13.9%	30,821	3.2%	

Source: Montgomery County Commission on Council Redistricting; Adjusted 2010 Redistricting Data, Maryland Dept. of Planning; Redistricting Data (PL 94-171) 2000 U.S. Census, U.S. Census Bureau; Center for Research & Information Systems, Montgomery County Department of Planning. M-NCPPC (9/12/11).

Proposed Districts by 2010 Precincts

The list of 2010 precincts in each proposed Council district is as follows:

2011 Redistricting Plan Proposed by Montgomery County's Commission on Redistricting*
Adjusted 2010 Precinct Population by Proposed Council Districts: Montgomery County, MD

Proposed 2011 Council Districts									
1		2		3		4		5	
Precinct	Population	Precinct	Population	Precinct	Population	Precinct	Population	Precinct	Population
3-1	3,495	1-2	4,769	4-1	6,544	1-1	3,284	5-1	4,947
3-2	2,805	1-3	4,185	4-2	4,168	1-4	3,340	5-2	5,287
4-4	4,082	1-6	2,579	4-3	5,787	1-5	3,925	5-3	2,752
4-8	4,128	2-1	6,876	4-5	5,358	4-15	7,039	5-4	1,529
4-10	3,782	2-2	4,993	4-6	3,810	5-9	4,903	5-5	3,067
4-12	4,522	2-3	3,792	4-7	4,442	5-16	4,229	5-6	5,968
4-13	2,695	2-4	5,541	4-9	2,413	5-22	1,922	5-7	1,366
4-17	2,814	2-5	4,668	4-14	6,549	8-1	4,499	5-8	2,604
4-18	4,316	2-6	3,097	4-16	3,740	8-2	5,218	5-10	4,024
4-31	4,393	2-7	520	4-19	2,949	8-4	1,716	5-11	4,949
4-32	1,847	2-8	5,025	4-20	3,834	8-5	3,378	5-12	5,384
6-2	3,036	2-9	2,187	4-21	3,561	8-6	5,069	5-13	9,948
6-9	2,597	2-10	2,359	4-22	-	8-7	2,386	5-14	8,114
6-12	2,935	2-11	7,119	4-23	3,456	8-8	3,662	5-15	4,559
7-1	2,623	6-1	2,916	4-24	4,679	8-9	4,616	5-17	4,968
7-2	2,487	6-4	3,021	4-25	2,984	8-10	2,854	5-18	2,235
7-3	3,773	6-5	2,778	4-26	2,604	8-11	3,983	5-19	4,362
7-4	5,461	6-6	4,243	4-27	2,022	8-12	3,850	5-20	3,860
7-5	2,678	6-7	5,199	4-28	2,405	8-13	2,531	5-21	7,196
7-6	2,836	6-10	5,349	4-30	6,083	9-4	5,155	5-23	3,222
7-7	2,605	6-11	7,338	4-34	2,378	9-37	3,473	5-24	3,623
7-8	4,340	6-13	2,523	6-3	3,305	13-1	3,443	13-4	3,097
7-9	3,705	6-14	2,231	6-8	5,064	13-2	4,392	13-5	3,853
7-10	4,279	9-5	2,740	8-3	3,591	13-20	2,614	13-6	3,168
7-11	4,556	9-7	7,948	9-1	3,707	13-25	6,649	13-7	3,246
7-12	3,712	9-8	8,692	9-2	5,737	13-27	4,548	13-8	3,793
7-13	4,614	9-9	3,332	9-3	4,734	13-28	3,686	13-9	2,644
7-15	4,465	9-11	3,983	9-6	6,701	13-29	5,373	13-10	2,531
7-16	2,626	9-12	4,213	9-10	2,688	13-30	6,204	13-11	4,423
7-17	2,627	9-17	1,493	9-13	4,833	13-32	5,406	13-12	1,826
7-18	3,224	9-18	5,485	9-14	3,284	13-33	2,776	13-13	4,819
7-19	3,124	9-19	3,952	9-15	4,267	13-35	5,084	13-14	2,577
7-20	3,436	9-21	3,695	9-16	7,924	13-36	5,575	13-15	5,727
7-21	1,536	9-22	3,512	9-20	3,581	13-37	4,104	13-16	4,437
7-22	2,927	9-23	2,464	9-24	3,418	13-40	3,376	13-17	2,264
7-23	4,308	9-25	3,510	9-27	4,867	13-41	2,165	13-18	4,464
7-24	3,256	9-26	4,813	9-28	1,313	13-43	3,666	13-19	3,026
7-25	3,086	9-29	4,052	9-31	4,319	13-44	6,192	13-21	4,007
7-26	5,734	9-30	4,348	9-32	8,037	13-48	3,781	13-22	8,341
7-27	2,361	9-34	5,913	9-33	3,797	13-49	4,256	13-23	3,362
7-28	2,474	9-38	2,738	9-35	6,283	13-53	2,579	13-24	2,959
7-30	1,232	11-0	2,258	9-36	2,930	13-55	4,769	13-31	2,498
7-31	1,411	12-1	3,033	13-45	3,025	13-56	2,382	13-42	2,069
7-32	1,685	12-2	3,414	13-46	3,016	13-57	2,024	13-47	5,298
10-1	1,996	12-3	5,099	13-51	4,123	13-59	2,410	13-50	3,043

2011 Redistricting Plan Proposed by Montgomery County's Commission on Redistricting*
Adjusted 2010 Precinct Population by Proposed Council Districts: Montgomery County, MD

Proposed 2011 Council Districts									
1		2		3		4		5	
10-2	3,525	12-4	3,209	13-52	2,900	13-61	3,180	13-58	3,498
10-3	3,097	12-5	5,204	13-54	4,245	13-62	2,707	13-65	3,165
10-4	1,982			13-69	2,951	13-63	3,045	13-66	985
10-5	3,080					13-64	7,423	13-67	2,310
10-6	3,137							13-68	3,059
10-7	3,755								
10-9	3,546								
10-10	3,652								
10-11	2,722								
10-12	4,069								
10-13	2,282								
13-3	2,678								
13-26	1,784								
13-34	3,367								
13-38	3,836								
13-39	3,094								
Total	196,230		192,408		194,406		194,841		194,453
% of									
County	20.2%		19.8%		20.0%		20.0%		20.0%

* Proposed 2011 County Council Redistricting Plan approved by the Montgomery County's Commission on Redistricting Sept 9, 2011.

Source: Adjusted 2010 Redistricting Data, Maryland Department of Planning; Center for Research & Information Systems, Montgomery County Department of Planning, M-NCPPC (9/19/11).

Proposed District Descriptions

The boundaries of the five (5) Council districts required under Section 16 of the County Charter are as follows.

District 1: The southern boundary of District 1 begins at the junction of the boundary lines of Montgomery County, Maryland, the District of Columbia and Fairfax County, Virginia; then northwesterly, meandering along the west bank of the Potomac River, the boundary line of Montgomery County and Fairfax County; then continuing northwesterly, meandering along the Potomac River, to the boundary line of Montgomery County, Maryland and Loudoun County (Virginia); then continuing northwesterly and northeasterly along the western boundary of the Potomac River to its junction with the boundary of Montgomery County, Maryland and Frederick County, Maryland; then northeasterly along said boundary line to its junction with the center line of Dickerson Road (MD Route 28); then southeasterly and southwesterly along the center line of said road, continuing as Darnestown Road (MD Route 28); then continuing southeasterly along the center line of said road to its intersection with the center line of Turkey Foot Road; then southeasterly along the center line of said road to its junction with the center line of Travilah Road; then easterly and northeasterly along the center line of said road to its junction with center line of Piney Meetinghouse Road; then southerly along the center line of said road to its intersection with the Potomac Electric Power Company right-of-way; then southeasterly along said right-of-way to its intersection with the center line of Falls Road (MD Route 189); then easterly to its junction with the center line of Montrose Road; then easterly along the center line of said road and a straight line of prolongation to its junction with the center line of Rockville Pike (MD Route 355); then northwesterly along the center line of said road to its intersection with the center line of Halpine Road and a line of prolongation to the center line of the CSX Railroad right-of-way; then southeast along the center line of said right-of-way to its intersection with the municipal boundary of the Town of Kensington; then northeasterly and east along said municipal boundary line to the center line of Connecticut Avenue (MD Route 185); then north along the center line of said road to its junction with the center line of Lawrence Avenue; then east along the center line of said road to its junction with the center line of University Boulevard West (MD Route 193); then northeasterly along the center line of said road to its intersection with the center line of Drumm Avenue; then southwesterly along the center line of said road and continuing south along a line of prolongation to its junction with the center line of Meredith Avenue (at Oberon Street); then south along the center line of Meredith Avenue to its intersection with the center line of Edgewood Road; then westerly along the center line of said road and a line of prolongation to the center line of the CSX Railroad right-of-way; then continuing southeasterly along said right-of-way to its intersection with the center line of Brookville Road; then southwesterly along the center line of said road to its junction with the center line of Lyttonsville Place; then southeasterly along the center line of said road to its intersection with the center line of the Georgetown Branch Trail; then southwesterly along the center line of said trail to its junction with Brookville Access Road; then southwest along the center line of Brookville Access Road to its junction with the center line of Grubb Road; then southeasterly along the center line of said road to its intersection with the center line of East West Highway (MD Route 410); then northeasterly, easterly and northeasterly along the center line of said road to its junction with the center line of Rosemary Hills Drive; then southeasterly along a line of prolongation from the center line of said road to its intersection with the boundary

line of Montgomery County, Maryland and the District of Columbia; then southwesterly along said boundary line to the boundary line of Montgomery County, Maryland, the District of Columbia and Fairfax County, Virginia, the point of beginning.

District 2: The southern boundary of District 2 begins at the junction of the center line of Lake Winds Way and the center line of Travilah Road; then westerly along the center line of said road to its junction with the center line of Turkey Foot Road; then northwesterly along the center line of said road to its junction with the center line of Darnestown Road (MD Route 28); then southwesterly and northwesterly along the center line of said road, continuing northeasterly and northwesterly as Dickerson Road (MD Route 28) to the boundary line of Montgomery County, Maryland and Frederick County, Maryland; then northeasterly along said county boundary line to the point at Parrs Spring where the boundary lines of Montgomery County, Maryland, Frederick County, Maryland, and Howard County, Maryland converge; then southwesterly and southeasterly along the boundary line of Montgomery County, Maryland and Howard County, Maryland following the center line of the Patuxent River to its intersection with the center line of Mullinix Mill Road; then southwesterly along the center line of said road to its junction with the center line of Damascus Road (MD Route 108); then southeasterly along the center line of said road to its junction with the center line of Jarl Drive; then southwesterly along the center line of said road and a line of prolongation to its junction with the center line of Great Seneca Creek; then meandering southeasterly and southwesterly along the center line of said creek to its intersection with the center line of Woodfield Road (MD Route 124); then southwesterly along the center line of said road to its junction with the center line of the north end of Hadley Farms Drive; then westerly, southerly and southeasterly along a line encompassing all of the streets connected to Hadley Farms Drive to the junction of said line with the center line of Cabin Branch Tributary at a point east and south of Boxberry Terrace; then meandering southwesterly along the center line of said tributary to its intersection with the center line of Snouffer School Road; then southeasterly along said road to its intersection with the center line of Flower Hill Way; then southerly and southeasterly along the center line of said road to its junction with the center line of Woodfield Road (MD Route 124); then southwesterly along the center line of said road to its intersection with the center line of Emory Grove Road; then northwesterly along said road to its intersection with the center line of Goshen Road; then south along the center line of said road to its intersection with the center line of Odend'hal Avenue; then west along the center line of said road to its intersection with the center line of Lost Knife Road; then northwest along the center line of said road to its junction with Montgomery Village Avenue (MD Route 124); then southwest along said road to the municipal boundary of the City of Gaithersburg to the center line of Watkins Mill Road; then southwest along said road to the municipal boundary and its junction at the center line of Whetstone Run; then meandering southwesterly and northerly along the center line of said run to its intersection with the municipal boundary line of the City of Gaithersburg; then northwesterly and southwest along said municipal boundary line and intersecting with the Potomac Electric Power Company right-of-way to its junction with the center line of Old Game Preserve Road; then northwesterly along the center line of said road to its junction with the center line of Arrowsmith Court; then northwesterly along the center line of said road to its junction with the center line of Game Preserve Road; then southwesterly along the center line of said road to its intersection with the center line of North Frederick Avenue (MD Route 355); then northerly along the center line of said road to its intersection with the

center line of Great Seneca Creek; then meandering westerly and southerly along the center line of said creek to its intersection with the center line of the Potomac Electric Power Company right-of-way; then southeasterly along the center line of said right-of-way to its intersection with the center line of Darnestown Road (MD Route 28); then easterly along the center line of said road to its intersection with the center line of Dufief Mill Road; then southwesterly along the center line of said road to its junction with the center line of Lake Winds Way; then southerly along the center line of said road to its junction with the center line of Travilah Road, the point of beginning.

District 3: The southwestern boundary of District 3 begins at the center line of the Potomac Electric Power Company right-of-way and the center line of Piney Meetinghouse Road; then northeasterly and northerly along the center line of said road to its junction with the center line of Travilah Road; then southwesterly along the center line of said road to its junction with the center line of Lake Winds Way; then northwesterly along the center line of said road to its junction with the center line of Dufief Mill Road; then northeasterly along the center line of said road to its junction with the center line of Darnestown Road (MD Route 28); then northwesterly along the center line of said road to its junction with the center line of the Potomac Electric Power Company right-of-way; then northwesterly along the center line of said right-of-way to its intersection with the center line of Great Seneca Creek; then meandering northeasterly along the center line of said creek to its intersection with the center line of Frederick Road (MD Route 355); then southeasterly along the center line of said road to its intersection with the center line of Game Preserve Road; then northeast along the center line of said road to its junction with the center line of Arrowsmith Court; then southeasterly along the center line of said road to its junction with the center line of Old Game Preserve Road; then southeasterly along the center line of said road to its junction with the northwestern municipal boundary line of the City of Gaithersburg and the Potomac Electric Power Company right-of-way; then north and easterly along said municipal boundary line to its intersection with the center line of Watkins Mill Road; then southwesterly along the center line of said road to its junction with the municipal boundary (south of Whetstone Run); then southeasterly and south along said municipal boundary line to its intersection with the center line of Montgomery Village Avenue (MD Route 124); then northeasterly along the center line of said road to its junction with the center line of Lost Knife Road; then southeasterly along the center line of said road to its junction with Odend'hal Avenue; then east along the center line of Odend'hal Avenue to its junction with the center line of Goshen Road; then north along the center line of said road to its intersection with the center line of Emory Grove Road; then southeasterly along the center line of said road to its intersection with the center line of Woodfield Road (MD Route 124); then southwesterly along the center line of said road to its junction with the center line of Midcounty Highway; then southeasterly along the center line of said road to its junction with the center line of Shady Grove Road; then northeasterly along the center line of said road to its junction with the center line of Muncaster Mill Road (Md. Route 115); then southeasterly along the center line of said road to its junction with the center line of Norbeck Road (MD Route 28); then east along the center line of said road to its junction with a line of prolongation to the northeastern boundary of Leisure World of Maryland (Corporate Mutual 16); then southeasterly, southwesterly and westerly along said corporate boundary line to its junction with the center line of Georgia Avenue (MD Route 97);

then southeasterly along the center line of said road to its junction with the center line of Aspen Hill Road; then west and southwesterly along the center line of said road to its junction with Veirs Mill Road (MD Route 586); then northwest along the center line of said road to its intersection with the center line of Rock Creek; then southeasterly meandering along the center line of said creek to its junction with the southern boundary line of Rock Creek Park; then west, north and west along said park boundary line to its junction with the southeast corner of the boundary line of Parklawn Memorial Park Cemetery; then westerly and northerly along said cemetery boundary to its junction with the center line of an unnamed creek; then northwesterly meandering along said creek to a line of prolongation to the center line of Fishers Lane; then west along the center line of said road and a line of prolongation to the center line of Halpine Road; then southwest along the center line of said road to its intersection with the center line of Rockville Pike (MD Route 355); then southeasterly along the center line said road to its junction with a line of prolongation to the center line of Montrose Road; then westerly along the center line of said road to its junction with the center line of Falls Road (MD Route 189); then southwesterly along the center line of said road to its junction with the center line of the Potomac Electric Power Company right-of-way; then northwesterly along the center line of said right-of-way to the center line of Piney Meetinghouse Road, the point of beginning.

District 4: The southeastern boundary of District 4 begins at the junction of the center line of Ednor Road and the center line of the Patuxent River, the boundary line of Montgomery County, Maryland and Howard County, Maryland; then northwesterly meandering along said county boundary line to its intersection with the center line of Mullinix Mill Road; then southwesterly along the center line of said road to its junction with the center line of Damascus Road (MD Route 108); then southeasterly along the center line of said road to its junction with the center line of Jarl Road; then southwesterly along the center line of said road to its junction with the center line of Great Seneca Creek; then east and southwesterly meandering along the center line of said creek to its intersection with the center line of Woodfield Road (MD Route 124); then southeasterly along the center line of said road to its north junction with the center line of Hadley Farms Drive; then westerly, southerly and southeasterly along a line encompassing all streets connected to Hadley Farms Drive to a junction with the center line of Cabin Branch Tributary at a point south of Boxberry Terrace; then meandering southwesterly along the center line of said tributary to its intersection with the center line of Snouffer School Road; then southeasterly along the center line of said road to its intersection with the center line of Flower Hill Way; then southwesterly and southeasterly along the center line of said road to its intersection with the center line of Woodfield Road (MD Route 124); then southwest along the center line of said road to its junction with the center line of Midcounty Highway; then southeasterly along the center line of said road to its junction with the center line of Shady Grove Road; then northeasterly along the center line of said road to its junction with the center line of Muncaster Mill Road (MD Route 115); then southeasterly along the center line of said road to its intersection with the center line of Norbeck Road (MD Route 28); then east along the center line of said road to its junction with a line of prolongation to the northeastern boundary of Leisure World of Maryland (Corporate Mutual 16); then southeasterly, southwesterly and westerly along said corporate boundary line to its junction with the center line of Georgia Avenue (MD Route 97); then southeasterly along the center line of said road to its junction with the center line of Aspen Hill Road; then west and southwesterly along the center line of said road to its junction with the

center line of Veirs Mill Road (MD Route 586); then northwest along the center line of said road to its intersection with the center line of Rock Creek; then meandering southeasterly along the center line of said creek to its junction with the southern boundary line of Rock Creek Park; then west, north and south along said park boundary line to its junction with Parklawn Memorial Park Cemetery continuing west along said cemetery boundary line; then southwest, northwest and north along said cemetery boundary line to its junction with the center line of an unnamed creek; then meandering west along the center line of said creek to the center line of Fishers Lane; then west along the center line of said road and a line of prolongation to the center line of the CSX Railroad right-of-way; then continuing southeasterly along the center line of said right-of-way to its junction with the center line of Summit Avenue; then northeast along the center line of said road to its junction with the municipal boundary of the Town of Kensington; then northeast and east along said municipal boundary line to its intersection with Connecticut Avenue (MD Route 185); then north along the center line of said road to its intersection with the center line of Lawrence Avenue; then east along the center line of said road to its junction with the center line of University Boulevard West (MD Route 193); then northeasterly along the center line of said road to its junction with the center line of Drumm Avenue; then southwesterly along the center line of said road and a line of prolongation to the center line of Drumm Avenue to its intersection with the center line of Plyers Mill Road; then east along the center line of said road to its intersection with the center line of Georgia Avenue (MD Route 97); then southeast along the center line of said road to its intersection with the center line of Dennis Avenue; then easterly along the center line of said road to the center line of Sligo Creek; then northerly meandering along the center line of said creek to its junction with the center line of University Boulevard West (MD Route 193); then southeasterly along the center line of said road to its junction with a line of extended prolongation (at Arcola Avenue) following said line northeasterly and southeasterly to its junction with the center line of Northwest Branch; then northerly meandering along the center line of said branch to a line of prolongation and its convergence with the center line of Springbrook Drive; then southeasterly along the center line of said road to its junction with the center line of Warrenton Drive; then northeasterly along the center line of said road to its junction with New Hampshire Avenue (MD Route 650); then north along the center line of said road to its junction with the center line of Norwood Road; then northwesterly along the center line of said road to its junction with the center line of Ednor Road; then northeasterly along the center line of said road to its junction with the center line of the Patuxent River, the boundary line of Montgomery County, Maryland and Howard County, Maryland, the point of beginning.

District 5: The southwestern boundary of District 5 begins at the boundary line of Montgomery County, Maryland and the District of Columbia (at Rosemary Hills Drive); then continuing northwest along a line of prolongation to its junction with the center line of East West Highway (MD Route 410); then west along the center line of said road to its intersection with the center line of Grubb Road; then northwest along the center line of said road to its junction with the center line of Brookville Access Road; then north along the center line of Brookville Access Road to its junction with the center line of Georgetown Branch Trail; then northeasterly along the center line of said trail to its intersection with the center line of Lyttonsville Place; then northwesterly along the center line of said road to its junction with the center line of Brookville Road; then northeasterly along the center line of said road to its intersection with the center line

of the CSX Railroad right-of-way; then northwesterly along the center line of said right-of-way and a line of prolongation east to the center line of Edgewood Road; then east along the center line of said road to its intersection with the center line of Meredith Avenue; then north along the center line of said road and a line of prolongation (at Oberon Street) to the center line of Drumm Avenue; then northwesterly along the center line of said road to its intersection with the center line of Plyers Mill Road; then east along the center line of said road to its intersection with the center line of Georgia Avenue (MD Route 97); then southeasterly along the center line of said road to its intersection with the center line of Dennis Avenue; then easterly along the center line of said road to the center line of Sligo Creek; then northerly meandering along the center line of said creek to its junction with the center line of University Boulevard West (MD Route 193); then southeasterly along the center line of said road to its junction with a line of prolongation (at Arcola Avenue); then northeasterly along the center line of said line of prolongation extending northeasterly to its junction with the center line of Northwest Branch; then northerly meandering along the center line of said branch to a line of prolongation easterly to the center line of Springbrook Drive; then easterly along the center line of said road to its junction with the center line of Warrenton Drive; then northeasterly along the center line of said road to its junction with the center line of New Hampshire Avenue (MD Route 650); then north along the center line of said road to its junction with the center line of Norwood Road; then northwesterly along the center line of said road to its junction with the center line of Ednor Road; then northeasterly along the center line of said road to its junction with the center line of the Patuxent River, the boundary line of Montgomery County, Maryland and Howard County, Maryland; then southeasterly meandering along said river, the county boundary line, to its junction with the boundary line of Montgomery County, Maryland and Prince George's County, Maryland; then southwesterly along said county boundary line, continuing as said county boundary to its junction with the boundary line of Montgomery County, Maryland and the District of Columbia (Eastern Avenue); then northwest and southwest along said county boundary line to a point of prolongation from East West Highway (at Rosemary Hills Drive), the point of beginning.

Minority Statement

The Montgomery County Redistricting Commission (the “Commission”) recommended a redistricting map to County Council based on a 5-4 vote. There were two proposed maps before the Commission, one proposed by Don Spence and the other by Henry Kahwaty. Commissioner Spence’s proposed map was approved by the 5-4 vote, and Commissioner Kahwaty’s proposed map was rejected on an identical 5-4 vote. Mr. Spence’s proposed redistricting map was approved by the Democratic Commissioners, and Dr. Kahwaty’s proposed map was approved by Republican Commissioners.

The Commission had great, but unrealized, potential to develop a map that best represents the interests of Montgomery County’s citizens. Instead of working in a collaborative process and carefully considering public input, the Commission made no adjustments to Mr. Spence’s initial proposal based on ideas from other Commissioners or the community. In fact, the Commission did not even consider making any adjustments to Mr. Spence’s map based on comments from the public. As a result, the Commission’s process was little more than a mask for a plan developed behind closed doors by one or several members of the Democratic majority. The Commission gave a veneer of public input and deliberative process to what was essentially a plan devised out of public view and without any public input. Furthermore, the map approved by the Commission combined areas together that lack common local interests, which weakens the ability of Montgomery County citizens to have their interests represented before County government.

The Commission’s Public Hearings

The Commission held two public hearings to solicit comments on redistricting. One session was held before proposed maps were released. This meeting was intended to gather public input on map design and strategy. A second hearing was held after the two proposed maps were released. The stated purpose of this second hearing was to gather comments on the specific maps proposed. The Commission’s final map did not reflect any of the public comments received, and indeed the Commission never discussed or otherwise considered the public comments received at the second hearing. In particular, no revisions to the map were made based on substantive public comments, and no revisions were even considered or discussed. We conclude that the public hearing process had no purpose and was actually more of a show than a serious effort to gather input from Montgomery County residents.

The Spence Map Adopted by the Commission

Mr. Spence characterized his map as a way to group together “communities of interest” in Montgomery County. Interestingly, he only adopted this language after Dr. Kahwaty used this term to describe his proposed redistricting map.

Mr. Spence proposed, and the Commission adopted, a map that creates a district in the western part of the County. Mr. Spence described this as a “community of interest” along the Potomac. It is hard to see, however, how combining Poolesville and Bethesda into one district creates a “community of interest”. Do these very different areas face the same local concerns? If so, what are these concerns?

Mr. Spence also proposed, and the Commission adopted, a district starting with Wheaton and running to the north through Olney and Brookeville. This district's common feature was apparently Georgia Avenue, a road and not a river as with the Bethesda/Poolesville district. Mr. Spence indicated that this was another community of interest. We fail to see, however, the local concerns that bind these areas together as a "community of interest". There are many local issues that are of concern to Montgomery County residents, such as traffic, public safety, and school quality. No reasoned analysis of local public safety or other local concerns has been offered to justify combining Wheaton and Olney as a "community of interest". As such, we conclude that this description is really nothing more than window dressing.

The Kahwaty Map Rejected by the Commission

Dr. Kahwaty proposed a more dramatic restructuring of County Council districts. His proposed districts are defined around true communities of interest. His proposed "Inside the Beltway" district combined older communities with common traffic concerns into one district. He recommended a district centered on Rockville, and a second centered on Gaithersburg. The most dramatic feature of his proposed map, however, was his proposal to combine together areas like Poolesville to the west, Damascus to the north, and Brookeville and Brinklow to the east. This district has been described as something that surrounds much of the rest of the county, which is correct. This is exactly what it did. Even so, this district represented a true community of interest.

It has been Montgomery County policy for many years to concentrate development in the center core of the County and to surround the County with less developed areas, including the Agricultural Reserve. Thus, Montgomery County policy created disbursed areas around the County's perimeter that are less densely populated. Not surprisingly, these areas have common needs and interests that are separate and distinct from those in Bethesda, downtown Silver Spring, and the center of Rockville. Simply put, we feel that areas like Laytonsville have more in common with places like Poolesville than with Glenmont and Wheaton, and we believe it is appropriate to recognize this in redistricting so that these common interests have a voice in Montgomery County government.

One criticism levied against Dr. Kahwaty's recommendation for this perimeter district was that it was too dispersed to be served adequately by a member County Council. This cannot be considered a serious argument: if a member of Council cannot serve 20% of the Montgomery County population in this perimeter district, how can any at-large member of Council serve the whole County? This is not a criticism of Dr. Kahwaty's proposed map but instead is a criticism of the four at-large seats on Council.

Recommendation

We recommend the County Council closely scrutinize the map approved by the Redistricting Commission, hold a true public hearing, adequately consider public comments, and determine how the interests of Montgomery County citizens can be best represented before our local government. The political characteristics of different regions of the County may not be the same. In a democracy, these distinctions should not be squelched but rather should be given a voice in our political institutions.

Bill No. 31-11
Concerning: Council Districts -
Boundaries
Revised: 9/30/2011 Draft No. 1
Introduced: October 4, 2011
Expires: April 4, 2013
Enacted: _____
Executive: _____
Effective: _____
Sunset Date: _____
Ch. _____, Laws of Mont. Co. _____

COUNTY COUNCIL FOR MONTGOMERY COUNTY, MARYLAND

By: Council President Ervin

AN ACT to revise the boundaries of Council districts.

By amending

Montgomery County Code
Chapter 16, Elections
Section 16-2

Boldface	<i>Heading or defined term.</i>
<u>Underlining</u>	<i>Added to existing law by original bill.</i>
[Single boldface brackets]	<i>Deleted from existing law by original bill.</i>
<u>Double underlining</u>	<i>Added by amendment.</i>
[[Double boldface brackets]]	<i>Deleted from existing law or the bill by amendment.</i>
* * *	<i>Existing law unaffected by bill.</i>

The County Council for Montgomery County, Maryland approves the following Act:

1 **Sec. 1. Section 16-2 is amended as follows:**

2 **16-2. Boundaries of Council districts.**

3 The boundaries of the 5 Council districts required under Section 103 of the
4 County Charter are as follows.

5 [**District 1:** The southern boundary of District 1 begins at the junction of the
6 boundary lines of Montgomery County (Maryland), the District of Columbia, and
7 Fairfax County (Virginia); then northwesterly along the boundary line of
8 Montgomery County and Fairfax County to a point on a line of prolongation from
9 Muddy Branch; then north along said line of prolongation, crossing the Potomac
10 River and circumscribing around the northwestern end of Watkins Island to Muddy
11 Branch; then meandering northerly and easterly along the center line of Muddy
12 Branch to its intersection with Turkey Foot Road; then easterly along the center line
13 of Turkey Foot Road to its junction with Travilah Road; then northeasterly along the
14 center line of Travilah Road to its junction with Piney Meetinghouse Road; then
15 southerly along the center line of Piney Meetinghouse Road to its intersection with
16 the right-of-way of the Potomac Electric Power Company (PEPCO) power line; then
17 easterly along the center line of the PEPCO right-of-way to its intersection with
18 Watts Branch; then meandering northeasterly along the center line of Watts Branch
19 to its intersection with the southern municipal boundary line of the City of Rockville;
20 then southeasterly along the southern municipal boundary line to its junction with the
21 center line of Falls Road; then southerly along the center line of Falls Road to its
22 intersection with the southern municipal boundary line of the City of Rockville; then
23 southeasterly and northeasterly along the municipal boundary line of the City of
24 Rockville to its junction with the center line of Seven Locks Road; then southerly
25 along the center line of Seven Locks Road to its intersection with the center line of
26 Montrose Road; then east along the center line of Montrose Road to its junction with
27 the municipal boundary line of the City of Rockville east of Wilmart Street; then

northerly and easterly along the municipal boundary line to the center line of East Jefferson Street; then north along the center line of East Jefferson Street to the municipal boundary line of the City of Rockville; then easterly along the municipal boundary line to the center line of Rockville Pike (Md. Route 355); then northwesterly along the center line of Rockville Pike to its intersection with Halpine Road; then northeasterly along the center line of Halpine Road to a point on a line of prolongation from Fishers Lane; then easterly along said line of prolongation to Fishers Lane; then easterly along the center line of Fishers Lane to its junction with the western boundary line of Parklawn Cemetery; then following the western, southern and eastern boundary lines to the junction with the Rock Creek Park boundary line; then east, south, and again east, along the Rock Creek Park boundary line, and east on a line of prolongation from the Rock Creek Park boundary line to Rock Creek at a point opposite to Edgebrook Road; then meandering southeasterly along the center line of Rock Creek to its intersection with the boundary line of Montgomery County and the District of Columbia; then southwest along said boundary line to its junction with the boundary lines of Montgomery County, the District of Columbia and Fairfax County, the point of beginning.]

[District 2: The southwestern boundary of District 2 begins at the confluence of Muddy Branch with the Potomac River; then continuing south along a line of prolongation from Muddy Branch across the Potomac River and circumscribing around the northwestern end of Watkins Island, to the boundary line of Montgomery County and Fairfax County; then northwesterly and northeasterly along said boundary line, continuing as the boundary line of Montgomery County and Loudoun County (Virginia), to its junction with the boundary line of Montgomery County and Frederick County (Maryland); then northeast along said boundary line, continuing as the boundary line of Montgomery County and Carroll County (Maryland) to its convergence with the boundary line of Montgomery County and Howard County

55 (Maryland); then southwesterly and southeasterly along the boundary line of
56 Montgomery County and Howard County to its intersection with Georgia Avenue
57 (Md. Route 97); then southerly along the center line of Georgia Avenue to the
58 municipal boundary line of Brookeville; then northerly, easterly and southerly along
59 the municipal boundary to the center line of Brighton Dam Road; then easterly and
60 northeasterly along the center line of Brighton Dam Road to its intersection with the
61 center line of Hawlings River, then meandering southerly along the center line of
62 Hawlings River to its intersection with the center line of Gold Mine Road; then
63 northeasterly along the center line of Gold Mine Road to its junction with the center
64 line of New Hampshire Avenue (Md. Route 650); then southeasterly along the center
65 line of New Hampshire Avenue to its junction with the center line of Brooke Road;
66 then southwest and southeast along the center line of Brooke Road to its intersection
67 with the center line of Olney-Sandy Spring Road (Md. Route 108); then southwest
68 and northwest along the center line of Olney-Sandy Spring Road to its junction with
69 the center line of Old Baltimore Road; then south and westerly along the center line
70 of Old Baltimore Road to its junction with the center line of Georgia Avenue; then
71 southerly along the center line of Georgia Avenue to its junction with the center line
72 of Emory Lane; then westerly along the center line of Emory Lane to its junction
73 with the center line of Cashell Road; then northwesterly along the center line of
74 Cashell Road to its junction with the center line of Bowie Mill Road; then
75 northeasterly along the center line of Bowie Mill Road to its junction with the center
76 line of Olney-Laytonsville Road (Md. Route 108); then northwesterly along the
77 center line of Olney-Laytonsville Road to its junction with the center line of
78 Muncaster Road; then southwesterly along the center line of Muncaster Road to its
79 junction with the center line of Muncaster Mill Road (Md. Route 115); then
80 northwesterly along the center line of Muncaster Mill Road, continuing as Snouffer
81 School Road at Woodfield Road (Md. Route 124), to its intersection with the center

line of Goshen Road; then south along the center line of Goshen Road to its junction
 with the center line of Odend'hal Avenue; then westerly along the center line of
 Odend'hal Avenue to its intersection with the southwest side of Lost Knife Road;
 then northwesterly along the southwest side of Lost Knife Road to its junction with
 the center line of Montgomery Village Avenue; then southwesterly along the center
 line of Montgomery Village Avenue to its intersection with the municipal boundary
 line of the City of Gaithersburg; then westerly, northerly, and northwesterly along the
 municipal boundary line to its intersection with the center line of Watkins Mill Road;
 then northeasterly along the center line of Watkins Mill Road to its intersection with
 a northern municipal boundary line of the City of Gaithersburg; then northwesterly,
 southwesterly, westerly, southerly, and again northwesterly along the municipal
 boundary line to its intersection with the center line of Game Preserve Road; then
 southerly along the center line of Game Preserve Road to its intersection with the
 center line of Frederick Road (Md. Route 355); then northwesterly along the center
 line of Frederick Road to its intersection with Great Seneca Creek; then meandering
 southwesterly along the center line of Great Seneca Creek to its intersection with the
 right-of-way of the Potomac Electric Power Company (PEPCO) power line; then
 southeasterly along the center line of the PEPCO right-of-way to its intersection with
 Darnestown Road (Md. Route 28); then southwesterly along the center line of
 Darnestown Road to its junction with the center line of Jones Lane; then southerly
 along the center line of Jones Lane to its junction with the center line of Turkey Foot
 Road; then southeasterly along the center line of Turkey Foot Road to its intersection
 with Muddy Branch; then meandering southwesterly along the center line of Muddy
 Branch to its confluence with the Potomac River, the point of beginning.]

[District 3: The Southwestern boundary of District 3 begins at the intersection
 of Muddy Branch and Turkey Foot Road; then northwesterly along the center line of
 Turkey Foot Road to its junction with the center line of Jones Lane; then northerly

109 along the center line of Jones Lane to its junction with the center line of Darnestown
110 Road (Md. Route 28); then northeasterly along the center line of Darnestown Road to
111 the right-of-way of the Potomac Electric Power Company (PEPCO) power line; then
112 northwesterly along the center line of the PEPCO right-of-way to its intersection with
113 Great Seneca Creek; then meandering northeasterly along the center line of Great
114 Seneca Creek to its intersection with the center line of Frederick Road (Md. Route
115 355); then southeasterly along the center line of Frederick Road to its intersection
116 with the northern municipal boundary line of the City of Gaithersburg; then
117 northerly, southeasterly, again northerly, easterly, again northeasterly, and
118 southeasterly along the municipal boundary line to its intersection with the center line
119 of Watkins Mill Road; then southwesterly along the center line of Watkins Mill Road
120 to its intersection with the northern municipal boundary line of the City of
121 Gaithersburg; then southeasterly, southerly, and westerly along said municipal
122 boundary line to its intersection with the center line of Montgomery Village Avenue;
123 then northeasterly along the center line of Montgomery Village Avenue to its
124 junction with the southwest side of Lost Knife Road; then southeasterly along the
125 southwest side of Lost Knife Road to its junction with Oden'hal Avenue; then
126 easterly along the southern edge of Oden'hal Avenue to its intersection with the
127 center line of Goshen Road; then north along the center line of Goshen Road to its
128 junction with the center line of Snouffer School Road; then southeasterly along the
129 center line of Snouffer School Road, continuing as Muncaster Mill Road (Md. Route
130 115) at Woodfield Road (Md. Route 124), to the intersection of Muncaster Mill Road
131 with the North Branch of Rock Creek; then meandering southwesterly along the
132 center line of the North Branch of Rock Creek to its northeastern confluence with
133 Lake Bernard Frank; then southwesterly along the center line of Lake Bernard Frank
134 to its southwestern confluence with the North Branch of Rock Creek; then
135 meandering southwesterly along the center line of the North Branch of Rock Creek to

136 its confluence with Rock Creek; then meandering southerly along the center line of
137 Rock Creek to a point opposite to Edgebrook Road; then west along a line of
138 prolongation from a southern boundary line of Rock Creek Regional park, to that
139 boundary line; then west, north, and again west to the eastern boundary line of
140 Parklawn Cemetery; then following that boundary line westerly, southwesterly,
141 northwesterly, again westerly, and again northwesterly to its intersection with the
142 center line of Fishers Lane; then westerly along the center line of Fishers Lane, and
143 continuing along a line of prolongation from the center line of Fishers Lane to the
144 center line of Halpine Road; then southwesterly along the center line of Halpine
145 Road; then southwesterly along the center line of Halpine Road to its intersection
146 with the center line of Rockville Pike (Md. Route 355); then southeasterly along the
147 center line of Rockville Pike to its intersection with the municipal boundary line of
148 the City of Rockville; then westerly along the municipal boundary line to the center
149 line of East Jefferson Street; then south along the center line of East Jefferson Street
150 to the municipal boundary line of the City of Rockville; then westerly and southerly
151 along the municipal boundary line to its junction with the center line of Montrose
152 Road; then west along the center line of Montrose Road to its intersection with the
153 center line of Seven Locks Road; then northerly along the center line of Seven Locks
154 Road to the municipal boundary line of the City of Rockville; then westerly along the
155 municipal boundary line to its intersection with the center line of Falls Road; then
156 northerly along the center line of Falls Road to its junction with the municipal
157 boundary line of the City of Rockville; then northwesterly along the municipal
158 boundary line to its intersection with the center line of Watts Branch; then
159 meandering southwesterly along the center line of Watts Branch to its intersection
160 with the Potomac Electric Power Company (PEPCO) right-of-way; then westerly
161 along the PEPCO right- of-way to its intersection with the center line of Piney
162 Meetinghouse Road; then northeasterly along the center line of Piney Meetinghouse

163 Road to its junction with the center line of Travilah Road; then southwesterly along
 164 the center line of Travilah Road to its junction with the center line of Turkey Foot
 165 Road; then westerly along the center line of Turkey Foot Road to its intersection with
 166 Muddy Branch, the point of beginning.]

167 **[District 4:** The southeastern boundary of District 4 begins at the intersection
 168 of the boundary line of Montgomery County and Prince George's County (Maryland)
 169 with Cherry Hill Road; then northwesterly along the center line of Cherry Hill Road
 170 to Columbia Pike (U.S. Route 29); then southwesterly along the center line of
 171 Columbia Pike, continuing as Colesville Road (U.S. Route 29) at Northwest Branch,
 172 to the intersection of Colesville Road and University Boulevard West (Md. Route
 173 193); then northwesterly along the center line of University Boulevard West to its
 174 junction with the center line of Arcola Avenue; then northwesterly along the center
 175 line of Arcola Avenue to its junction with the eastern boundary line of Wheaton
 176 Regional Park; then northerly, easterly, northeasterly, again easterly, northerly and
 177 northeasterly along the park boundary line to its intersection with the center line of
 178 Randolph Road; then southwesterly along the center line of Randolph Road to its
 179 intersection with the center line of Connecticut Avenue (Md. Route 185); then
 180 southerly along the center line of Connecticut Avenue to its intersection with the
 181 center line of Veirs Mill Road (Md. Route 586); then northwesterly along the center
 182 line of Veirs Mill Road to its intersection with Rock Creek; then meandering
 183 northerly along the center line of Rock Creek to its junction with the North Branch of
 184 Rock Creek; then meandering northeasterly along the center line of the North Branch
 185 of Rock Creek to its southwestern confluence with Lake Bernard Frank; then
 186 northeasterly along the center line of Lake Bernard Frank to its northeastern
 187 confluence with the North Branch of Rock Creek; then meandering northeasterly
 188 along the center line of the North Branch of Rock Creek to its intersection with
 189 Muncaster Mill Road (Md. Route 115); then northwesterly along the center line of

190 Muncaster Mill Road to its junction with the center line of Muncaster Road; then
191 northeasterly along the center line of Muncaster Road to its junction with the center
192 line of Olney-Laytonsville Road (Md. Route 108); then southeasterly along the center
193 line of Olney-Laytonsville Road to its junction with the center line of Bowie Mill
194 Road; then southwesterly along the center line of Bowie Mill Road to its junction
195 with the center line of Cashell Road; then southeasterly along the center line of
196 Cashell Road to its junction with the center line of Emory Lane; then easterly along
197 the center line of Emory Lane to its intersection with the center line of Georgia
198 Avenue (Md. Route 97); then northerly along the center line of Georgia Avenue to its
199 intersection with the center line of Old Baltimore Road; then easterly and northerly
200 along the center line of Old Baltimore Road to its junction with the center line of
201 Olney-Sandy Spring Road; then southeasterly and northeasterly along the center line
202 of Olney-Sandy Spring Road to its junction with the center line of Brooke Road; then
203 northwesterly and northeasterly along the center line of Brooke Road to its junction
204 with the center line of New Hampshire Avenue (Md. Route 650); then northwesterly
205 along the center line of New Hampshire Avenue to its junction with the center line of
206 Gold Mine Road; then southwesterly along the center line of Gold Mine Road to its
207 intersection with the center line of Hawlings River; then meandering northerly along
208 the center line of Hawlings River to its intersection with Brighton Dam Road; then
209 southwesterly and westerly along the center line of Brighton Dam Road to its
210 junction with the municipal boundary line of Brookeville; then northerly, westerly,
211 and southerly along the municipal boundary line to its intersection with Georgia
212 Avenue; then northerly along the center line of Georgia Avenue to its intersection
213 with the boundary line of Montgomery County and Howard County; then
214 southeasterly along said boundary line to its junction with the boundary line of
215 Montgomery County and Prince George's County; then southwesterly along said
216 boundary line to its intersection with Cherry Hill Road, the point of beginning.]

217 **[District 5:** The southern boundary of District 5 begins at the junction of the
 218 boundary lines of Montgomery County, Prince George's County, and the District of
 219 Columbia; then northwest along the boundary line of Montgomery County and the
 220 District of Columbia to the northernmost apex of the District of Columbia; then
 221 southwest along said boundary line to its intersection with Rock Creek; then
 222 meandering westerly and northwesterly along the center line of Rock Creek to its
 223 intersection with Veirs Mill Road (Md. Route 586); then southeast along the center
 224 line of Veirs Mill Road to its intersection with the center line of Connecticut Avenue
 225 (Md. Route 185); then northerly along the center line of Connecticut Avenue to its
 226 intersection with the center line of Randolph Road; then northeasterly along the
 227 center line of Randolph Road to its junction with the eastern boundary line of
 228 Wheaton Regional Park; then southeasterly, southerly, westerly, southwesterly, again
 229 westerly, and again southerly along that boundary line to its junction with Arcola
 230 Avenue; then southeasterly along the center line of Arcola Avenue to its junction
 231 with the center line of University Boulevard West (Md. Route 193); then
 232 southeasterly along the center line of University Boulevard West to its intersection
 233 with the center line of Colesville Road (U.S. Route 29); then northeasterly along the
 234 center line of Colesville Road, continuing as Columbia Pike (U.S. Route 29) at
 235 Northwest Branch, to its intersection with the center line of Cherry Hill Road; then
 236 southeasterly along the center line of Cherry Hill Road to its intersection with the
 237 boundary line of Montgomery County and Prince George's County; then southwest,
 238 southeast, south, and southwesterly along the boundary line to its junction with the
 239 boundary line of Montgomery County and the District of Columbia, the point of
 240 beginning.]

241 **District 1:** The southern boundary of District 1 begins at the junction of the
 242 boundary lines of Montgomery County, Maryland, the District of Columbia and
 243 Fairfax County, Virginia; then northwesterly, meandering along the west bank of

244 the Potomac River, the boundary line of Montgomery County and Fairfax County;
245 then continuing northwesterly, meandering along the Potomac River, to the
246 boundary line of Montgomery County, Maryland and Loudoun County (Virginia);
247 then continuing northwesterly and northeasterly along the western boundary of the
248 Potomac River to its junction with the boundary of Montgomery County, Maryland
249 and Frederick County, Maryland; then northeasterly along said boundary line to its
250 junction with the center line of Dickerson Road (MD Route 28); then southeasterly
251 and southwesterly along the center line of said road, continuing as Darnestown
252 Road (MD Route 28); then continuing southeasterly along the center line of said
253 road to its intersection with the center line of Turkey Foot Road; then southeasterly
254 along the center line of said road to its junction with the center line of Travilah
255 Road; then easterly and northeasterly along the center line of said road to its
256 junction with center line of Piney Meetinghouse Road; then southerly along the
257 center line of said road to its intersection with the Potomac Electric Power
258 Company right-of-way; then southeasterly along said right-of-way to its
259 intersection with the center line of Falls Road (MD Route 189); then easterly to its
260 junction with the center line of Montrose Road; then easterly along the center line
261 of said road and a straight line of prolongation to its junction with the center line of
262 Rockville Pike (MD Route 355); then northwesterly along the center line of said
263 road to its intersection with the center line of Halpine Road and a line of
264 prolongation to the center line of the CSX Railroad right-of-way; then southeast
265 along the center line of said right-of-way to its intersection with the municipal
266 boundary of the Town of Kensington; then northeasterly and east along said
267 municipal boundary line to the center line of Connecticut Avenue (MD Route
268 185); then north along the center line of said road to its junction with the center
269 line of Lawrence Avenue; then east along the center line of said road to its junction
270 with the center line of University Boulevard West (MD Route 193); then

271 northeasterly along the center line of said road to its intersection with the center
 272 line of Drumm Avenue; then southwesterly along the center line of said road and
 273 continuing south along a line of prolongation to its junction with the center line of
 274 Meredith Avenue (at Oberon Street); then south along the center line of Meredith
 275 Avenue to its intersection with the center line of Edgewood Road; then westerly
 276 along the center line of said road and a line of prolongation to the center line of the
 277 CSX Railroad right-of-way; then continuing southeasterly along said right-of-way
 278 to its intersection with the center line of Brookville Road; then southwesterly along
 279 the center line of said road to its junction with the center line of Lyttonsville Place;
 280 then southeasterly along the center line of said road to its intersection with the
 281 center line of the Georgetown Branch Trail; then southwesterly along the center
 282 line of said trail to its junction with Brookville Access Road; then southwest along
 283 the center line of Brookville Access Road to its junction with the center line of
 284 Grubb Road; then southeasterly along the center line of said road to its intersection
 285 with the center line of East West Highway (MD Route 410); then northeasterly,
 286 easterly and northeasterly along the center line of said road to its junction with the
 287 center line of Rosemary Hills Drive; then southeasterly along a line of
 288 prolongation from the center line of said road to its intersection with the boundary
 289 line of Montgomery County, Maryland and the District of Columbia; then
 290 southwesterly along said boundary line to the boundary line of Montgomery
 291 County, Maryland, the District of Columbia and Fairfax County, Virginia, the
 292 point of beginning.

293 ***District 2:*** The southern boundary of District 2 begins at the junction of the
 294 center line of Lake Winds Way and the center line of Travilah Road; then westerly
 295 along the center line of said road to its junction with the center line of Turkey Foot
 296 Road; then northwesterly along the center line of said road to its junction with the
 297 center line of Darnestown Road (MD Route 28); then southwesterly and

298 northwesterly along the center line of said road, continuing northeasterly and
299 northwesterly as Dickerson Road (MD Route 28) to the boundary line of
300 Montgomery County, Maryland and Frederick County, Maryland; then
301 northeasterly along said county boundary line to the point at Parrs Spring where
302 the boundary lines of Montgomery County, Maryland, Frederick County,
303 Maryland, and Howard County, Maryland converge; then southwesterly and
304 southeasterly along the boundary line of Montgomery County, Maryland and
305 Howard County, Maryland following the center line of the Patuxent River to its
306 intersection with the center line of Mullinix Mill Road; then southwesterly along
307 the center line of said road to its junction with the center line of Damascus Road
308 (MD Route 108); then southeasterly along the center line of said road to its
309 junction with the center line of Jarl Drive; then southwesterly along the center line
310 of said road and a line of prolongation to its junction with the center line of Great
311 Seneca Creek; then meandering southeasterly and southwesterly along the center
312 line of said creek to its intersection with the center line of Woodfield Road (MD
313 Route 124); then southwesterly along the center line of said road to its junction
314 with the center line of the north end of Hadley Farms Drive; then westerly,
315 southerly and southeasterly along a line encompassing all of the streets connected
316 to Hadley Farms Drive to the junction of said line with the center line of Cabin
317 Branch Tributary at a point east and south of Boxberry Terrace; then meandering
318 southwesterly along the center line of said tributary to its intersection with the
319 center line of Snouffer School Road; then southeasterly along said road to its
320 intersection with the center line of Flower Hill Way; then southerly and
321 southeasterly along the center line of said road to its junction with the center line of
322 Woodfield Road (MD Route 124); then southwesterly along the center line of said
323 road to its intersection with the center line of Emory Grove Road; then
324 northwesterly along said road to its intersection with the center line of Goshen

325 Road; then south along the center line of said road to its intersection with the
326 center line of Odend'hal Avenue; then west along the center line of said road to its
327 intersection with the center line of Lost Knife Road; then northwest along the
328 center line of said road to its junction with Montgomery Village Avenue (MD
329 Route 124); then southwest along said road to the municipal boundary of the City
330 of Gaithersburg to the center line of Watkins Mill Road; then southwest along said
331 road to the municipal boundary and its junction at the center line of Whetstone
332 Run; then meandering southwesterly and northerly along the center line of said run
333 to its intersection with the municipal boundary line of the City of Gaithersburg;
334 then northwesterly and southwest along said municipal boundary line and
335 intersecting with the Potomac Electric Power Company right-of-way to its junction
336 with the center line of Old Game Preserve Road; then northwesterly along the
337 center line of said road to its junction with the center line of Arrowsmith Court;
338 then northwesterly along the center line of said road to its junction with the center
339 line of Game Preserve Road; then southwesterly along the center line of said road
340 to its intersection with the center line of North Frederick Avenue (MD Route 355);
341 then northerly along the center line of said road to its intersection with the center
342 line of Great Seneca Creek; then meandering westerly and southerly along the
343 center line of said creek to its intersection with the center line of the Potomac
344 Electric Power Company right-of-way; then southeasterly along the center line of
345 said right-of-way to its intersection with the center line of Darnestown Road (MD
346 Route 28); then easterly along the center line of said road to its intersection with
347 the center line of Dufief Mill Road; then southwesterly along the center line of said
348 road to its junction with the center line of Lake Winds Way; then southerly along
349 the center line of said road to its junction with the center line of Travilah Road, the
350 point of beginning.

351 **District 3:** The southwestern boundary of District 3 begins at the center line
352 of the Potomac Electric Power Company right-of-way and the center line of Piney
353 Meetinghouse Road; then northeasterly and northerly along the center line of said
354 road to its junction with the center line of Travilah Road; then southwesterly along
355 the center line of said road to its junction with the center line of Lake Winds Way;
356 then northwesterly along the center line of said road to its junction with the center
357 line of Dufief Mill Road; then northeasterly along the center line of said road to its
358 junction with the center line of Darnestown Road (MD Route 28); then
359 northwesterly along the center line of said road to its junction with the center line
360 of the Potomac Electric Power Company right-of-way; then northwesterly along
361 the center line of said right-of-way to its intersection with the center line of Great
362 Seneca Creek; then meandering northeasterly along the center line of said creek to
363 its intersection with the center line of Frederick Road (MD Route 355); then
364 southeasterly along the center line of said road to its intersection with the center
365 line of Game Preserve Road; then northeast along the center line of said road to its
366 junction with the center line of Arrowsmith Court; then southeasterly along the
367 center line of said road to its junction with the center line of Old Game Preserve
368 Road; then southeasterly along the center line of said road to its junction with the
369 northwestern municipal boundary line of the City of Gaithersburg and the Potomac
370 Electric Power Company right-of-way; then north and easterly along said
371 municipal boundary line to its intersection with the center line of Watkins Mill
372 Road; then southwesterly along the center line of said road to its junction with the
373 municipal boundary (south of Whetstone Run); then southeasterly and south along
374 said municipal boundary line to its intersection with the center line of Montgomery
375 Village Avenue (MD Route 124); then northeasterly along the center line of said
376 road to its junction with the center line of Lost Knife Road; then southeasterly
377 along the center line of said road to its junction with Odend'hal Avenue; then east

378 along the center line of Odend'hal Avenue to its junction with the center line of
 379 Goshen Road; then north along the center line of said road to its intersection with
 380 the center line of Emory Grove Road; then southeasterly along the center line of
 381 said road to its intersection with the center line of Woodfield Road (MD Route
 382 124); then southwesterly along the center line of said road to its junction with the
 383 center line of Midcounty Highway; then southeasterly along the center line of said
 384 road to its junction with the center line of Shady Grove Road; then northeasterly
 385 along the center line of said road to its junction with the center line of Muncaster
 386 Mill Road (Md. Route 115); then southeasterly along the center line of said road to
 387 its junction with the center line of Norbeck Road (MD Route 28); then east along
 388 the center line of said road to its junction with a line of prolongation to the
 389 northeastern boundary of Leisure World of Maryland (Corporate Mutual 16); then
 390 southeasterly, southwesterly and westerly along said corporate boundary line to its
 391 junction with the center line of Georgia Avenue (MD Route 97); then southeasterly
 392 along the center line of said road to its junction with the center line of Aspen Hill
 393 Road; then west and southwesterly along the center line of said road to its junction
 394 with Veirs Mill Road (MD Route 586); then northwest along the center line of said
 395 road to its intersection with the center line of Rock Creek; then southeasterly
 396 meandering along the center line of said creek to its junction with the southern
 397 boundary line of Rock Creek Park; then west, north and west along said park
 398 boundary line to its junction with the southeast corner of the boundary line of
 399 Parklawn Memorial Park Cemetery; then westerly and northerly along said
 400 cemetery boundary to its junction with the center line of an unnamed creek; then
 401 northwesterly meandering along said creek to a line of prolongation to the center
 402 line of Fishers Lane; then west along the center line of said road and a line of
 403 prolongation to the center line of Halpine Road; then southwest along the center
 404 line of said road to its intersection with the center line of Rockville Pike (MD

Route 355); then southeasterly along the center line said road to its junction with a line of prolongation to the center line of Montrose Road; then westerly along the center line of said road to its junction with the center line of Falls Road (MD Route 189); then southwesterly along the center line of said road to its junction with the center line of the Potomac Electric Power Company right-of-way; then northwesterly along the center line of said right-of-way to the center line of Piney Meetinghouse Road, the point of beginning.

District 4: The southeastern boundary of District 4 begins at the junction of the center line of Ednor Road and the center line of the Patuxent River, the boundary line of Montgomery County, Maryland and Howard County, Maryland; then northwesterly meandering along said county boundary line to its intersection with the center line of Mullinix Mill Road; then southwesterly along the center line of said road to its junction with the center line of Damascus Road (MD Route 108); then southeasterly along the center line of said road to its junction with the center line of Jarl Road; then southwesterly along the center line of said road to its junction with the center line of Great Seneca Creek; then east and southwesterly meandering along the center line of said creek to its intersection with the center line of Woodfield Road (MD Route 124); then southeasterly along the center line of said road to its north junction with the center line of Hadley Farms Drive; then westerly, southerly and southeasterly along a line encompassing all streets connected to Hadley Farms Drive to a junction with the center line of Cabin Branch Tributary at a point south of Boxberry Terrace; then meandering southwesterly along the center line of said tributary to its intersection with the center line of Snouffer School Road; then southeasterly along the center line of said road to its intersection with the center line of Flower Hill Way; then southwesterly and southeasterly along the center line of said road to its intersection with the center line of Woodfield Road (MD Route 124); then southwest along the

432 center line of said road to its junction with the center line of Midcounty Highway;
433 then southeasterly along the center line of said road to its junction with the center
434 line of Shady Grove Road; then northeasterly along the center line of said road to
435 its junction with the center line of Muncaster Mill Road (MD Route 115); then
436 southeasterly along the center line of said road to its intersection with the center
437 line of Norbeck Road (MD Route 28); then east along the center line of said road
438 to its junction with a line of prolongation to the northeastern boundary of Leisure
439 World of Maryland (Corporate Mutual 16); then southeasterly, southwesterly and
440 westerly along said corporate boundary line to its junction with the center line of
441 Georgia Avenue (MD Route 97); then southeasterly along the center line of said
442 road to its junction with the center line of Aspen Hill Road; then west and
443 southwesterly along the center line of said road to its junction with the center line
444 of Veirs Mill Road (MD Route 586); then northwest along the center line of said
445 road to its intersection with the center line of Rock Creek; then meandering
446 southeasterly along the center line of said creek to its junction with the southern
447 boundary line of Rock Creek Park; then west, north and south along said park
448 boundary line to its junction with Parklawn Memorial Park Cemetery continuing
449 west along said cemetery boundary line; then southwest, northwest and north along
450 said cemetery boundary line to its junction with the center line of an unnamed
451 creek; then meandering west along the center line of said creek to the center line of
452 Fishers Lane; then west along the center line of said road and a line of prolongation
453 to the center line of the CSX Railroad right-of-way; then continuing southeasterly
454 along the center line of said right-of-way to its junction with the center line of
455 Summit Avenue; then northeast along the center line of said road to its junction
456 with the municipal boundary of the Town of Kensington; then northeast and east
457 along said municipal boundary line to its intersection with Connecticut Avenue
458 (MD Route 185); then north along the center line of said road to its intersection

459 with the center line of Lawrence Avenue; then east along the center line of said
 460 road to its junction with the center line of University Boulevard West (MD Route
 461 193); then northeasterly along the center line of said road to its junction with the
 462 center line of Drumm Avenue; then southwesterly along the center line of said road
 463 and a line of prolongation to the center line of Drumm Avenue to its intersection
 464 with the center line of Plyers Mill Road; then east along the center line of said road
 465 to its intersection with the center line of Georgia Avenue (MD Route 97); then
 466 southeast along the center line of said road to its intersection with the center line of
 467 Dennis Avenue; then easterly along the center line of said road to the center line of
 468 Sligo Creek; then northerly meandering along the center line of said creek to its
 469 junction with the center line of University Boulevard West (MD Route 193); then
 470 southeasterly along the center line of said road to its junction with a line of
 471 extended prolongation (at Arcola Avenue) following said line northeasterly and
 472 southeasterly to its junction with the center line of Northwest Branch; then
 473 northerly meandering along the center line of said branch to a line of prolongation
 474 and its convergence with the center line of Springbrook Drive; then southeasterly
 475 along the center line of said road to its junction with the center line of Warrenton
 476 Drive; then northeasterly along the center line of said road to its junction with New
 477 Hampshire Avenue (MD Route 650); then north along the center line of said road
 478 to its junction with the center line of Norwood Road; then northwesterly along the
 479 center line of said road to its junction with the center line of Ednor Road; then
 480 northeasterly along the center line of said road to its junction with the center line of
 481 the Patuxent River, the boundary line of Montgomery County, Maryland and
 482 Howard County, Maryland, the point of beginning.

483 **District 5:** The southwestern boundary of District 5 begins at the boundary
 484 line of Montgomery County, Maryland and the District of Columbia (at Rosemary
 485 Hills Drive); then continuing northwest along a line of prolongation to its junction

486 with the center line of East West Highway (MD Route 410); then west along the
487 center line of said road to its intersection with the center line of Grubb Road; then
488 northwest along the center line of said road to its junction with the center line of
489 Brookville Access Road; then north along the center line of Brookville Access
490 Road to its junction with the center line of Georgetown Branch Trail; then
491 northeasterly along the center line of said trail to its intersection with the center
492 line of Lyttonsville Place; then northwesterly along the center line of said road to
493 its junction with the center line of Brookville Road; then northeasterly along the
494 center line of said road to its intersection with the center line of the CSX Railroad
495 right-of-way; then northwesterly along the center line of said right-of-way and a
496 line of prolongation east to the center line of Edgewood Road; then east along the
497 center line of said road to its intersection with the center line of Meredith Avenue;
498 then north along the center line of said road and a line of prolongation (at Oberon
499 Street) to the center line of Drumm Avenue; then northwesterly along the center
500 line of said road to its intersection with the center line of Plyers Mill Road; then
501 east along the center line of said road to its intersection with the center line of
502 Georgia Avenue (MD Route 97); then southeasterly along the center line of said
503 road to its intersection with the center line of Dennis Avenue; then easterly along
504 the center line of said road to the center line of Sligo Creek; then northerly
505 meandering along the center line of said creek to its junction with the center line of
506 University Boulevard West (MD Route 193); then southeasterly along the center
507 line of said road to its junction with a line of prolongation (at Arcola Avenue); then
508 northeasterly along the center line of said line of prolongation extending
509 northeasterly to its junction with the center line of Northwest Branch; then
510 northerly meandering along the center line of said branch to a line of prolongation
511 easterly to the center line of Springbrook Drive; then easterly along the center line
512 of said road to its junction with the center line of Warrenton Drive; then

513 northeasterly along the center line of said road to its junction with the center line of
 514 New Hampshire Avenue (MD Route 650); then north along the center line of said
 515 road to its junction with the center line of Norwood Road; then northwesterly along
 516 the center line of said road to its junction with the center line of Ednor Road; then
 517 northeasterly along the center line of said road to its junction with the center line of
 518 the Patuxent River, the boundary line of Montgomery County, Maryland and
 519 Howard County, Maryland; then southeasterly meandering along said river, the
 520 county boundary line, to its junction with the boundary line of Montgomery
 521 County, Maryland and Prince George's County, Maryland; then southwesterly
 522 along said county boundary line, continuing as said county boundary to its junction
 523 with the boundary line of Montgomery County, Maryland and the District of
 524 Columbia (Eastern Avenue); then northwest and southwest along said county
 525 boundary line to a point of prolongation from East West Highway (at Rosemary
 526 Hills Drive), the point of beginning.

527 *Approved:*

528 _____
Valerie Ervin, President, County Council

Date

529 *Approved:*

530 _____
Isiah Leggett, County Executive

Date

531 *This is a correct copy of Council action.*

532 _____
Linda M. Lauer, Clerk of the Council

Date

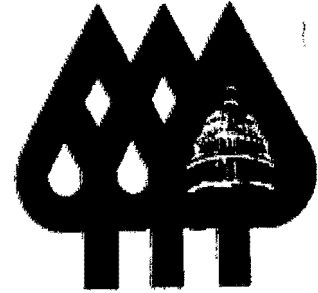
LEGISLATIVE REQUEST REPORT

Bill 31-11

Council Districts - Boundaries

DESCRIPTION:	Revises the boundaries of the 5 County Council districts. As introduced, the boundaries are those proposed by the Commission on Redistricting in its report submitted to the Council on October 4.
PROBLEM:	If any changes need to be made in the redistricting plan submitted by the Commission on Redistricting, they must be made by enacting legislation because otherwise the Council can only accept the plan as submitted.
GOALS AND OBJECTIVES:	To allow the Council to make changes in the redistricting plan submitted by the Commission on Redistricting.
COORDINATION:	Board of Elections
FISCAL IMPACT:	Minimal.
ECONOMIC IMPACT:	Minimal.
EVALUATION:	Unnecessary.
EXPERIENCE ELSEWHERE:	To be researched.
SOURCE OF INFORMATION:	Jeffrey L. Zyontz, Legislative Attorney 240- 777- 7896
APPLICATION WITHIN MUNICIPALITIES:	Applies only to County Council districts.
PENALTIES:	Not applicable

Welcome to Capitol View Park!



Capitol View Park (CVP) is a neighborhood of about 350 homes in Silver Spring, MD. **The first historic district in Montgomery County**, we are nestled between Kensington and Forest Glen. Metropolitan Avenue turns into Capitol View Avenue and meanders south until it meets Seminary Road. We welcome all residents to join CVPCA.

Capitol View Park was developed along the B&O Railroad metropolitan Branch between Forest Glen and Kensington in the latter part of the 19th century. The 123.5 acres, which were included in the original subdivision plan of 1887 surveyed for Mary Harr, were already of historic interest. Originally part of the 4,220 acre land grant made to William Joseph in 1689, by 1776 they were a part of the land holdings of the famous Daniel Carroll. The acreage passed from Daniel Carroll, Jr., to his son, William, and then 800 acres were acquired by Daniel Brent, son of Robert Brent, and executor of the will of Daniel Carroll, Sr.

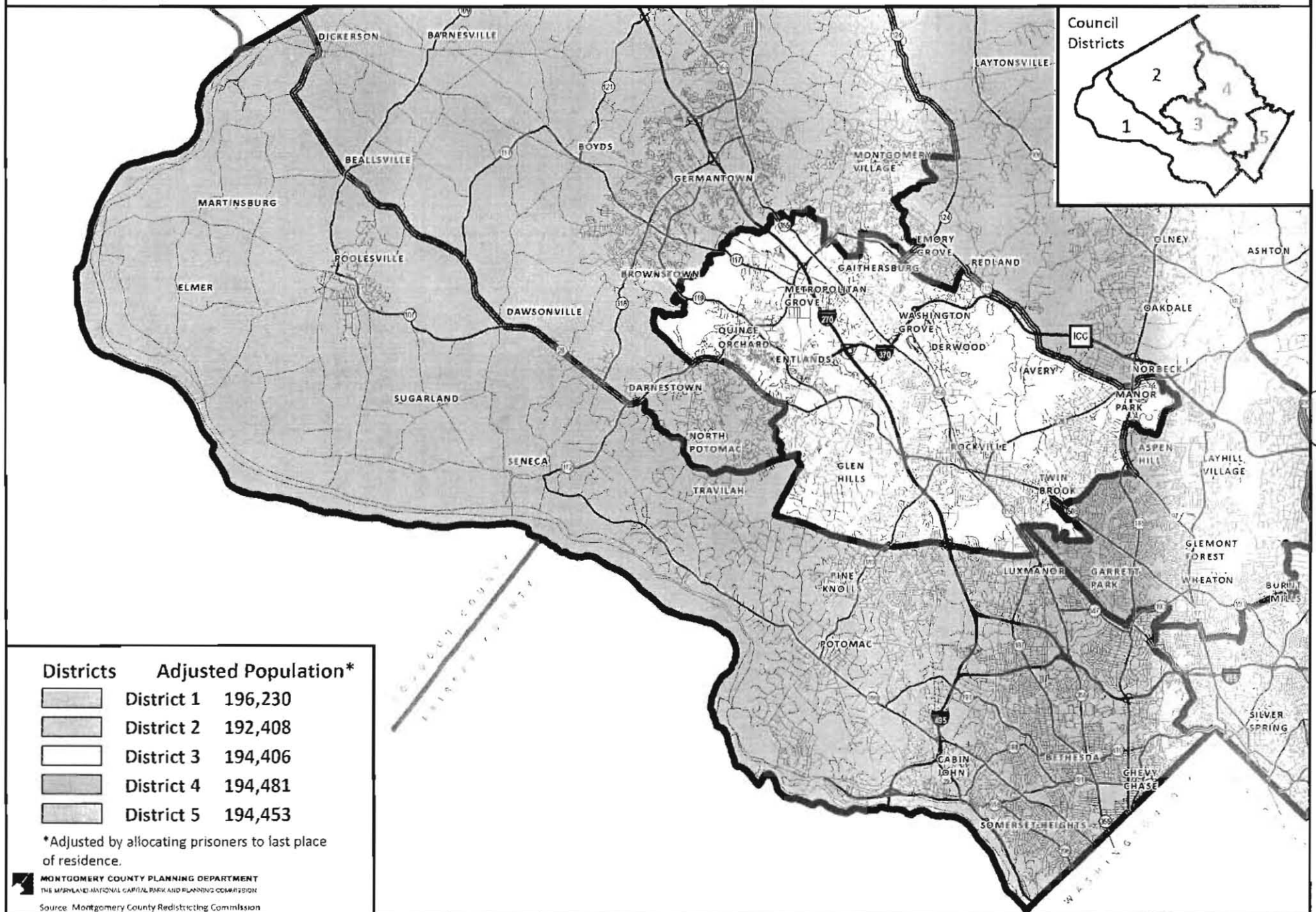
The land was sold and in 1829, 498 acres were purchased by Robert Brown, a farmer who passed 276.5 acres of that on to his son Thomas J. Brown in 1864. Thomas Brown built a house on that land (the Frederick Case house) which was the first known dwelling on the land now known as Capitol View Park. The land was bisected by the railroad with 123.5 acres north of the tracks and this acreage was sold to Mary Harr who was ultimately responsible for the platting and development of Capitol View Park.

The HARRS moved to their farm and built a house in 1882 (the Trimble House). The map of 1908 shows approximately 17 buildings in Capitol View Park. In 1911, Capitol View Avenue was laid out and recorded. Prior to this, there was no direct connection to Kensington by road north of the tracks. County water came to the area in the 1920's and slowly the number of houses increased. many of the smaller houses on Meredith Street and Capitol View Avenue were built in the 1930's.

The above information is from the Sector Plan for Capitol View and Vicinity, adopted July 1982.

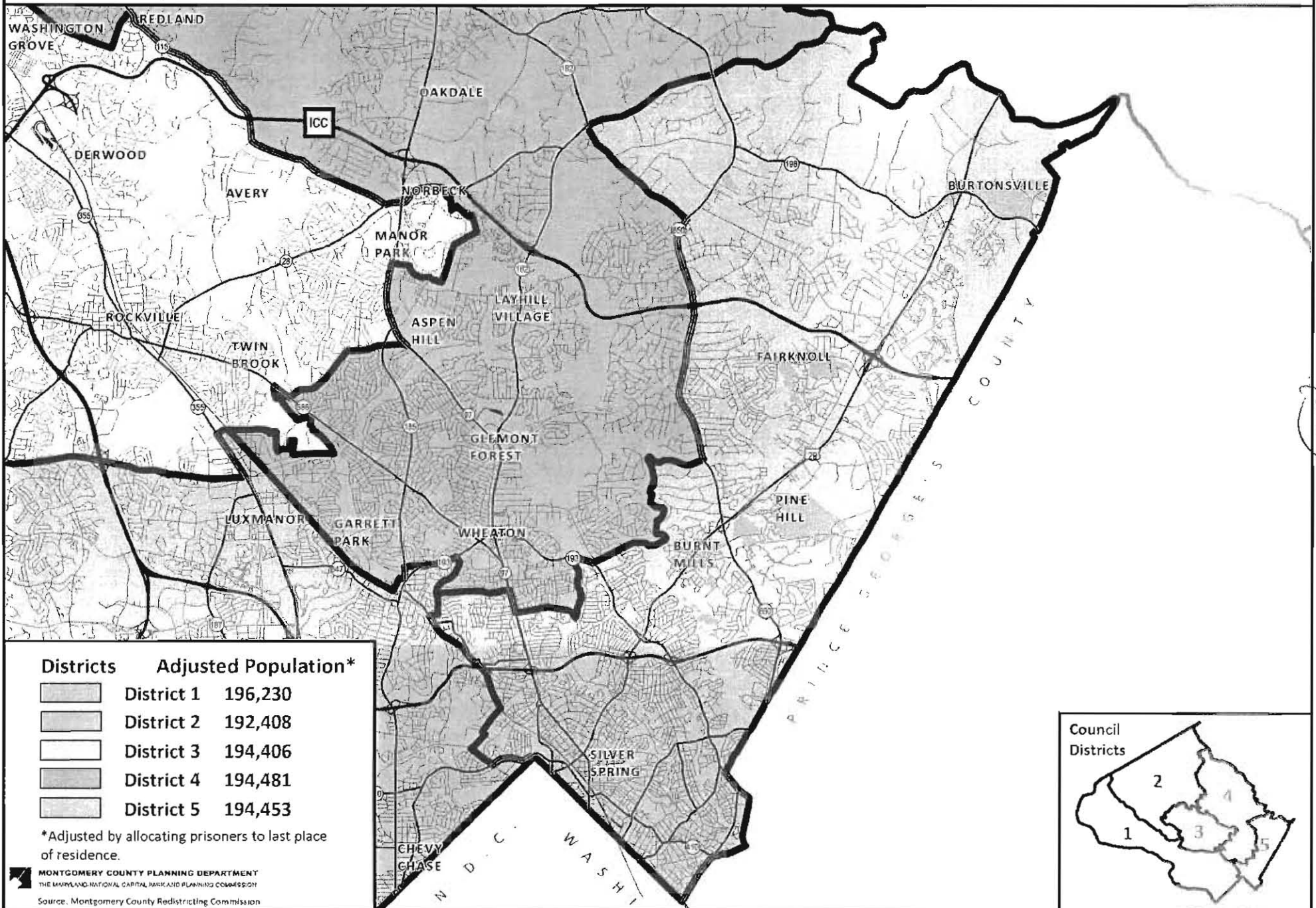
Proposed Council District 1

Montgomery County, MD Redistricting Plan (Commission on Redistricting, September 9, 2011)



Proposed Council District 5

Montgomery County, MD Redistricting Plan (Commission on Redistricting, September 9, 2011)



[illegible]

Prepared Testimony of Henry J. Kahwaty
Vice-Chair, Montgomery County Redistricting Commission

Good afternoon. I was Vice-Chair of the Montgomery County Redistricting Commission, but I offer these comments today in my own capacity; I have not been authorized by the Commission to speak on its behalf.

First, I would like to offer comments on the Commission's overall process from the point of view of an individual Commissioner. The Commission held two sessions focused on gathering input from Montgomery County residents. One session was held before proposed maps were developed and released, and one was after Mr. Spence and I released proposed County Council redistricting maps. Oddly enough, the Commission never discussed or considered the comments received from the public on the proposed maps. Comments from the public were received during our penultimate meeting, and then, at our final meeting, the two maps were put up for a vote and Mr. Spence's map was approved, 5-4. I do not think that it is proper for a public body to solicit feedback and then not consider the comments received. Indeed, not a single change was made in Mr. Spence's proposed map since the day it was first released during the summer. No comments from other Commissioners or from the public are reflected in the map whatsoever. If comments were solicited in private, then what is the point of having a public Commission? How does the process advance the interests of open and responsive government? You have about nine years to consider how to redistrict following the 2020 census, and I believe the process needs to be rethought.

Second, I offer comments on the map approved by the Commission from the point of my experiences as a candidate. I ran for the Maryland House of Delegates during the last election cycle in District 14. I spoke to a couple thousand people during the process. The old District 14 was, roughly speaking, the eastern 20% of the County. I met people in all parts of the District. I learned during the process that the northern part of the District in general feels much more detached and unrepresented than the rest of the District, both at the County and State levels. The map approved by the Commission currently before you now does not address this concern, which I view as unhealthy in a representative democracy.





I am happy to answer questions about the map I proposed and the logic supporting it. I do not intend to offer detailed comments on it today, or to offer a critique of the map proposed by Mr. Spence and approved by the Commission. The Commission's final report included a Minority Statement. My thoughts on both maps are set out in detail in that statement.

Thank you for this opportunity to present to the Council my thoughts on the 2011 redistricting process and for allowing me to serve on the Montgomery County Redistricting Commission.

Proposed Council Districts with High Schools and High School Service Areas

25

Legend

-  Public Middle School
-  Public High School
-  Proposed District
-  School Service Area

