



SILVER SPRING
TRANSPORTATION MANAGEMENT DISTRICT
ADVISORY COMMITTEE

AGENDA

**December 9, 2021 / 8:00 – 9:30 a.m.
Teams Meeting**

Staff Contact: Jim Carlson / (240) 777-8382; (301) 318-0328
james.carlson@montgomerycountymd.gov

- | | | |
|-------------|--|---|
| 8:00 | 1. Introductions/Agenda Review/Chair Comments | Jim Carlson |
| | 2. Minutes Review
September Combined TMD (©2) | All |
| | 3. Metro Update | Gary Erenrich
MCDOT-Special Assistant to the Director |
| | 4. Ride On Reimagined Study | Deanna Archey
Senior Planner-Ride On |
| | 5. Employer TDM Plans
Summary (©5) | Jim Carlson/All |
| | 6. Employer Outreach Update | Jennifer Bolick
TMD Outreach Team |
| | 7. Updates: Police/TMD/DOT/Other County Updates
Purple Line update – Information Items | Sandra Brecher
Sgt. Kerry Moore
Iftin Thompson
Jim Carlson |

Adjourn / Next Meeting: January 13, 2022

Information Items:
Purple Line Update

Joint Meeting
Transportation Management District
Advisory Committees
Friendship Heights/Bethesda/North Bethesda/Silver Spring/Greater Shady Grove
September 30, 2021

Item 1 – Welcome/Introductions: Jim Carlson opened the meeting and introductions were tabled to allow presentation time.

Item 2 – Vision Zero: Wade Holland, MCDOT Vision Zero Coordinator, explained that the Vision Zero national program was started with the belief that zero fatalities or serious injuries should occur from traffic accidents, as all are preventable by engineering and design. Originated in Sweden in the 90s, it gained support in the US in the early 2000s. Research has found that speed is a major cause of serious and fatal crashes as the survival rate decreases the higher the speed. Also reported:

- Seat belt use and car safety features have also improved the survival rate of high-speed crashes
- Roadway data is looked at to focus resources to improve – data show increases in pedestrian fatalities, which may be due to purchase of larger vehicles opposed to the past trend of smaller vehicles
- In 2020 50% of crashes were due to impaired driving
- Racial equity is a major factor in pedestrian strikes as racial minorities tend to have a higher number of emergency room visits due to traffic strikes
- The older the pedestrian, the longer the recovery from crashes
- Car crashes cost the County \$3 billion annually
- High Visibility Enforcement which is a mixture of education and enforcement focuses on the behaviors that have the most impact on crashes, such as distracted driving
- Seat belt use has increased – High Visibility data shows that 90% of drivers wear them
- A central office in Gaithersburg manages the High Visibility enforcement teams
- Vision Zero projects include pedestrian crosswalk beacons, lowering speed limits, and installing bike/shared use paths to increase connectivity
- Projects are being constructed at areas of high crash rates; 26 miles of road have lower speed limits, such as the ‘20 Is Plenty’ pilot being conducted on business streets
- The Emery Road project is an extension of the existing bike lane

Mr. Holland discussed the collaboration with State Highway Administration (SHA) for Vision Z engineering treatments:

- Installing new traffic signals, raised crosswalk upgrades, increasing off-peak parking, and lowering road speeds
- The Shared Streets project closes streets to provide outdoor dining and open space for biking and walking, using barriers such as flexi posts
- University Blvd pilot until November
- The Shared Streets on Colesville Road causing safety issues with cars blocking lanes for curbside dining – lack of enforcement sited
- Interactive map available on Vision Zero website:
<https://www.montgomerycountymd.gov/visionzero/>

- Policy updates include tactile treatments for visually impaired navigation and floating bus stops - trial installations
- Treatments to slow bikes to increase pedestrian safety include floating bus stops, green paint to show conflict areas, rumble strips, and speed bumps
- Parking corrals for safe scooter and micro-mobility parking – identify locations to increase parking, and vendors offering incentives to use corrals
- Discussion regarding employing Vision Zero across the County and not just in hot spots, as speeding has increased during Covid due to lack of enforcement – limited resources only placed where there is the most need

Some on the Committee commented that SHA is only concerned with moving traffic and not pedestrian safety, with the presence of dangerous crossing conditions on some State roads and lack of response. Also discussed was SHA's lack of notice about nighttime construction. It was noted that SHA has been a bit more reliable about sending notices of upcoming construction.

Discussed the issue of parking in a travel lane vs. No Parking lane – a person can park in a No Parking zone IF they remain in the vehicle - **Captain McBain** 3rd District contact.

- Meeting with the Regional Services Director **Jacob Newman** to discuss safety in the area as MCDOT receives information from the Community via Silver Spring Regional Service Center
- Department of Permitting Services is responsible for clearing sidewalks for outdoor dining; however, to report infractions call or contact online 311 and upload up to three photos

Item 3 – Metro Update: Gary Erenrich, MCDOT Special Assistant to the Director, reported that the anticipated increased ridership Metro was hoping to see after Labor Day has not occurred. However, Ride On and Metro are moving back to full service as it is aggressively trying to build ridership with bus service out pacing rail service. The slow increase in rail service may be due to the continued telework of the federal government. Also reported:

- Researching fare changes with a focus of making them seamless, convenient and equitable
- Some concepts of fare changes have been implemented on a trial basis, such as free transfers, one-way weekend fares, and fare pass reduction
- Fare equity study sent to Council included \$1 bus fare, Metro Access flat fares, and expanding rail hours
- Finding ways to promote reverse commute back into the county
- Modernization of the local payment system, replacing fare gates and bus fare boxes
- Chart showing Metro fare changes since 1970 as fares started increasing beyond the CPI in 2011
- Montgomery County is the leader in discount fares for children and seniors
- The importance of federal funding for transit, from the infrastructure bill to Build Back Better
- Shuttle service during the Red line shut down between Rockville & Shady Grove stations carry 5,000 riders a day

Item 4 - County Update: Sande Brecher reported:

- Today is the last day to comment on the Executive Regulation for the NextGen TMD legislation which was passed by Council
- Electric vehicle effort underway to provide a purchasing Co-op for EVs for businesses and residents – Fall/Winter roll out
- Walktober starting October 6 (Walk Maryland Day) and every Wednesday in October @ noon

- Car Free Day on September 22nd was a success
- The bike “Learn to Ride” and E-scooter classes are underway
- Bike donation event at COB garage on October 8th
- The MoCo Bike match program is seeking bike donations
- FY23 Budget Forums upcoming

Jennifer Bolick announced:

- Her team is continuing to conduct outreach to the TMD’s regarding the Metro shut down
- Transportation Management Plan meetings with employers
- Car Free Day was a success
- The upcoming Walk & Ride challenge is Monday, October 4th; registration ends today

Adjourn

Silver Spring TMD
Traffic Demand Management Plan Summary
December 2021

Code Requirements:

1. *Contact person designated to receive and distribute commuter information to employees*
2. *Information on transit and other commute alternatives distributed/ posted regularly (furnished by Commuter Services/CSS)*
3. *Facilitate CSS/TMD staff presentations and commuter information events for employees and HR/administrative staff. This could include benefits fares and other employer-sponsored events*
4. *Guaranteed Ride Home Promotion (free regional program offering emergency rides)*
5. *Annual Commuter Survey distributed to employees (short survey of transportation– supplied by CSS/TMD)*
6. *ADA information provided (transportation services for people with disabilities)*
7. *Permanent display area for bus schedules and other transportation information*
8. *Compile information on yearly TDM activities and submit Annual Report*

Employer	Employee Total	Status	Recommend to MCDOT
ACA Compliance Group	50 FT	Meets requirements and has voluntary measures: <ul style="list-style-type: none"> • Participates in COG pool matching • Real-time lobby transit display • Flexible/compressed schedules • Formal telework program 	Yes
Achieving the Dream	38 FT	Meets requirements and has voluntary measures: <ul style="list-style-type: none"> • Carpool matching • Formal telework program / 38 participating • Pre-tax deduction • Bicycle benefit • Flexible schedules 	Yes
Association of University Centers on Disabilities (AUCD)	28 FT	Meets requirements and has voluntary measures: <ul style="list-style-type: none"> • Direct benefit - \$85/mo • Formal telework / 28 participating • Flexible schedules 	Yes
Candid Home Health Care Services, LLC (voluntary plan)	18 FT 22 PT	Meets requirements and has voluntary measures: <ul style="list-style-type: none"> • Carpool matching 	Yes
Catholic Legal Immigration Network	28 FT	Meets requirements and has voluntary measures: <ul style="list-style-type: none"> • Formal telework program / 28 participating • Pre-tax deduction • Carpool matching • Flexible schedules 	Yes
Centers for Advanced ENT Care	30 FT 3 PT	Meets requirements and has voluntary measures: <ul style="list-style-type: none"> • Carpool matching 	Yes

Copper Canyon Grill (voluntary plan)	5 FT 35 PT	Meets requirements and has voluntary measures: <ul style="list-style-type: none"> • Bike racks/lockers • Flexible/compressed schedules 	Yes
DoubleTree by Hilton	44 FT 8 PT	Meets requirements and has voluntary measures: <ul style="list-style-type: none"> • Carpool matching 	Yes
Ellumen	65 FT 3 PT	Meets requirements and has voluntary measures: <ul style="list-style-type: none"> • Formal telework program / 68 participating • Bike racks / lockers • Carpool matching • Flexible schedules 	Yes
FAA (voluntary plan)	300 FT	Meets requirements and has voluntary measures: <ul style="list-style-type: none"> • Direct benefit - \$226/mo • Formal telework program – 280 participating • Bike racks / lockers • Flexible schedules • Carpool matching 	Yes
Hostelling International USA (voluntary plan)	17 FT	Meets requirements and has voluntary measures: <ul style="list-style-type: none"> • Pre-tax deduction • Bike racks • Flexible/compressed schedules • Carpool matching 	Yes
Innovative Life Solutions, Inc.	354 FT 130 PT	Meets requirements and has voluntary measures: <ul style="list-style-type: none"> • Flexible schedules • Carpool matching 	Yes
John Dahut & Associates	26 FT	Meets requirements and has voluntary measures: <ul style="list-style-type: none"> • Formal telework program • Carpool matching • Flexible schedules 	Yes
Red Lobster (voluntary plan)	5 FT 20 PT	Meets requirements and has voluntary measures: <ul style="list-style-type: none"> • Carpool matching 	Yes
RLJ Entertainment	40 FT	Meets requirements and has voluntary measures: <ul style="list-style-type: none"> • Direct benefit - \$100/mo / 8 participating • Carpool matching • Flexible schedules 	Yes
Silver Hospitality, Inc (Days Inn, Travel Lodge, Subway)	25 FT 3 PT	Meets requirements and has voluntary measures: <ul style="list-style-type: none"> • Carpool matching 	Yes
Tai Pedro & Associates	40 FT	Meets requirements and has voluntary measures: <ul style="list-style-type: none"> • Formal telework program / 35 participating • Zipcar available • Carpool matching 	Yes

The Eleanor (voluntary plan)	15 FT 15 PT	Meets requirements and has voluntary measures: <ul style="list-style-type: none"> • Bike racks • Flexible schedules • Carpool matching 	Yes
Ulta Beauty (voluntary plan)	8 FT 17 PT	Meets requirements and has voluntary measures: <ul style="list-style-type: none"> • Bike racks • Flexible/compressed schedules • Carpool matching 	Yes
Vietnam Veterans of America	42 FT 2 PT	Meets requirements and has voluntary measures: <ul style="list-style-type: none"> • Pre-tax deduction • Formal telework program / 23 participating • Carpool matching • Flexible schedules 	Yes



Montgomery County

Purple Line Update

December, 2021

Maricela Cordova, Purple Line Implementation Manager

Maricela.Cordova@montgomerycountymd.gov



Contract Update

Re-solicitation Update

- MDOT MTA announced last month they have selected the team of Dragados/OHL as the new design-build contractor
- Maryland Board of Public Works review/approval anticipated by January 2022 including replacement design-build contract and amended P3 Agreement, with an updated project cost and schedule for completion
- Contract Negotiations/Execution by February/March 2022
- Mobilization by late Spring

Overall Progress

LRV Production

- Of 26 total light rail vehicles, 2 vehicles have passed all factory tests, 14 vehicles are in testing, and 7 vehicles are under assembly at the Elmira, New York factory; 3 remaining vehicles will begin assembly as soon as those that are currently being assembled clear those workstations and move on into the testing phase

Operations Maintenance Facility (OMF) Status

- Permanent electrical service has recently been energized to the OMF in Prince Georges County and the remaining permanent utilities of water, gas, sewer, and telecommunications are under completion. Start-up of the systems and equipment has begun. Area surrounding the OMF is being graded for future receipt of track, catenary, and traction power systems

Construction Progress in Montgomery County

Construction Update

Bethesda / Chevy Chase

- Continue construction of Sleaford Road underpass scheduled for completion by early 2022, per community's request
- Placed wall panels that frame underpass and backfill
- Complete storm drain system at Sleaford Road
- Start placing sub ballast and track underdrain
- Install top of wall treatments
- Continue sewer line work at the beginning of the year after delayed materials are delivered



Storm Drain Installation at MSE Walls 1-023 and 1-024 – GBT at Sleaford Road



MSE Wall 1-023 Panel Installation – Sleaford Road



MSE Wall 1-023 Panel Installation – Sleaford Road



Storm Drain Installation – Sleaford Road

Construction Update

Lyttonsville/Woodside

- Completed tree clearing along 3rd Avenue in preparation for sewer and water work
- Complete Talbot Avenue utilities relocation
- Working east, will begin sewer and water line work adjacent to the CSX tracks from Bradford Place to Fenwick Lane



U105 Pepco Relocation – Talbot Avenue

Construction Update

Silver Spring

- Utility relocations through Spring of 2022
- Ripley Street, Ramsey Avenue, Dixon Avenue, and Bonifant Street: sewer, water, gas, PEPCO, and telecom relocations
- Gas relocations and Montgomery County fiber optic line relocations along Wayne Avenue
- Implemented Bonifant Street one-way traffic pattern on 10/11/2021 through the beginning of the year for gas relocation



U302 Gas Line Relocation – Bonifant Street



U302 Gas Line Relocation – Bonifant Street



U302 Gas Line Welding – Bonifant Street



U302 Pepco UG Relocation – Bonifant Street

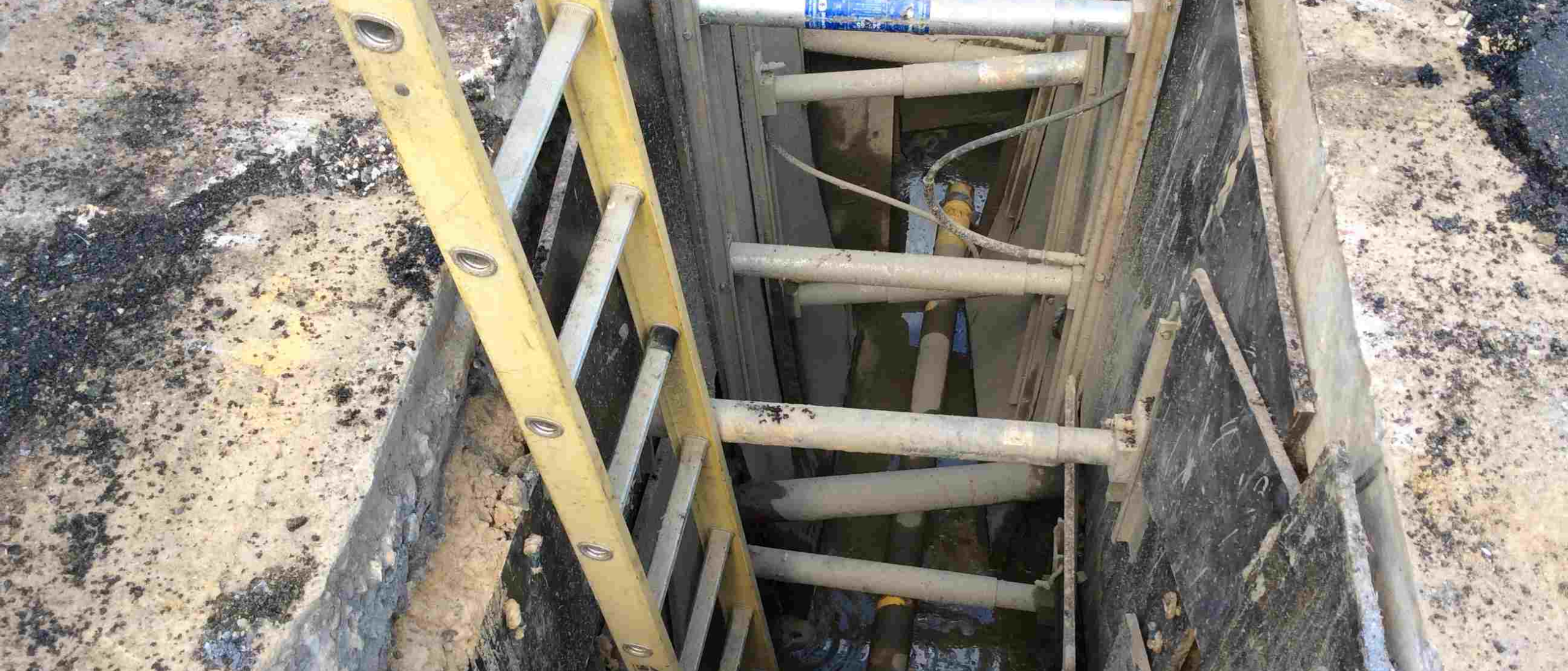
Construction Update

Wayne Avenue to Long Branch

- Wayne Avenue from Fenton Street to Sligo Creek Parkway: continue sewer, water, and gas relocations
- Completed sidewalk replacement on Wayne Avenue
- Manchester Road waterline will continue and upcoming sewer relocation on Manchester Road will detour the northbound sidewalk to the southbound from Sligo Creek Parkway to the Plymouth Street Tunnel
- On-going various utilities relocations on University Boulevard and Piney Branch; pedestrian access maintained



U303 Verizon Relocation Run E – Wayne Avenue



U303 Gas Line Relocation – Wayne Avenue





CIP Wall 3-140 Anti-Graffiti Coating Applied – SSIMS



U304 WSSC Water Relocation – Sligo Creek Parkway



U304 WSSC Water Relocation – Sligo Creek Parkway

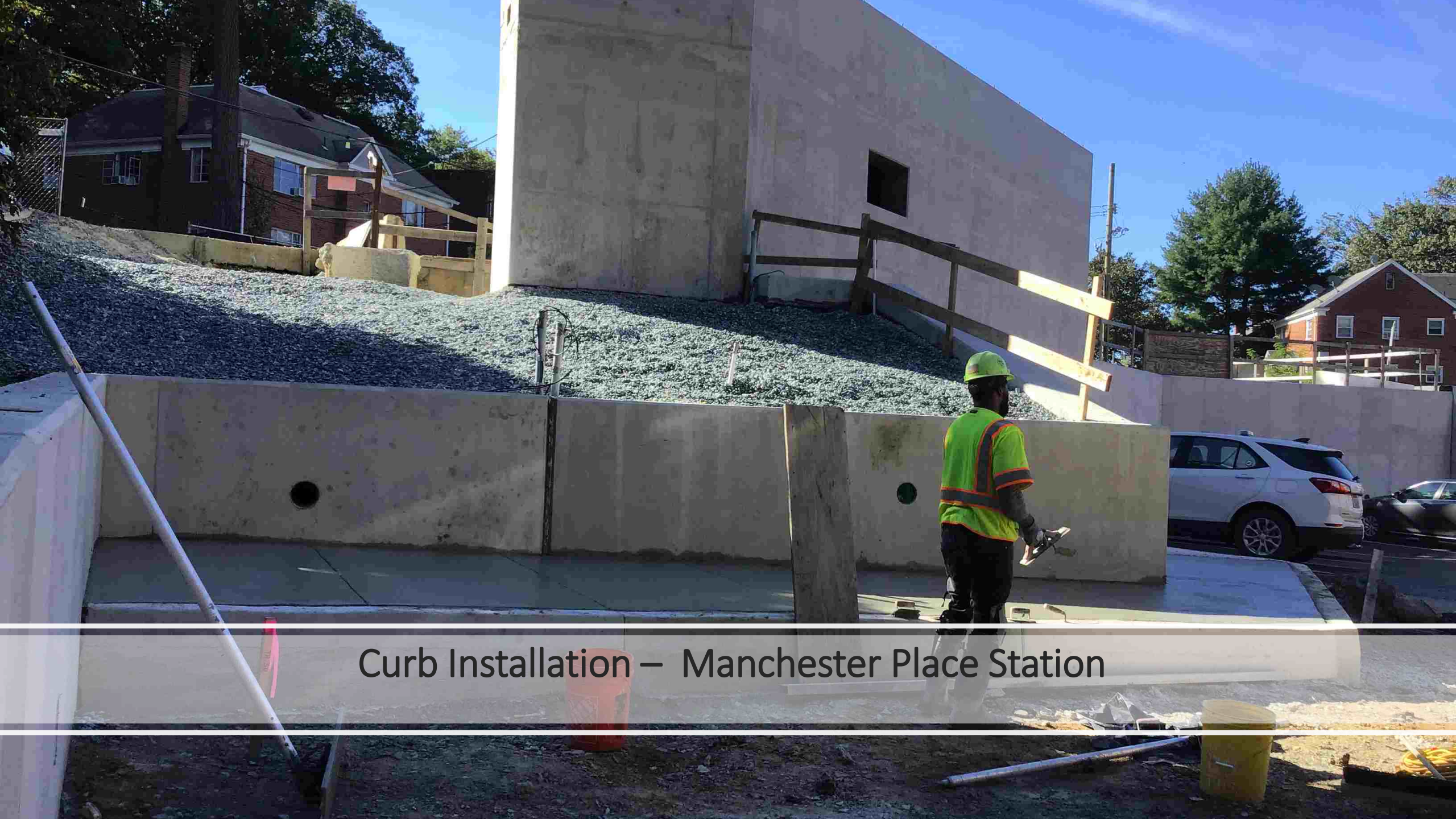


CIP Wall 3-159A Formwork — Manchester Place Station





CIP Wall 3-159A Formwork — Manchester Place Station



Curb Installation – Manchester Place Station



CIP Wall 3-159A Backfill – Manchester Place Station



U402 Water Relocation – Piney Branch Road



U402 Water Relocation – Piney Branch Road



U402 Pepco Overhead Relocation – University Boulevard



U501 Gas Regulator Station – University Boulevard

Questions?