

MATCH LINE - SEE SN-02

SN-01

NO.	REVISION	BY	DATE

DEPARTMENT OF TRANSPORTATION
 DIVISION OF TRAFFIC ENGINEERING & OPERATIONS
 MONTGOMERY COUNTY, MARYLAND

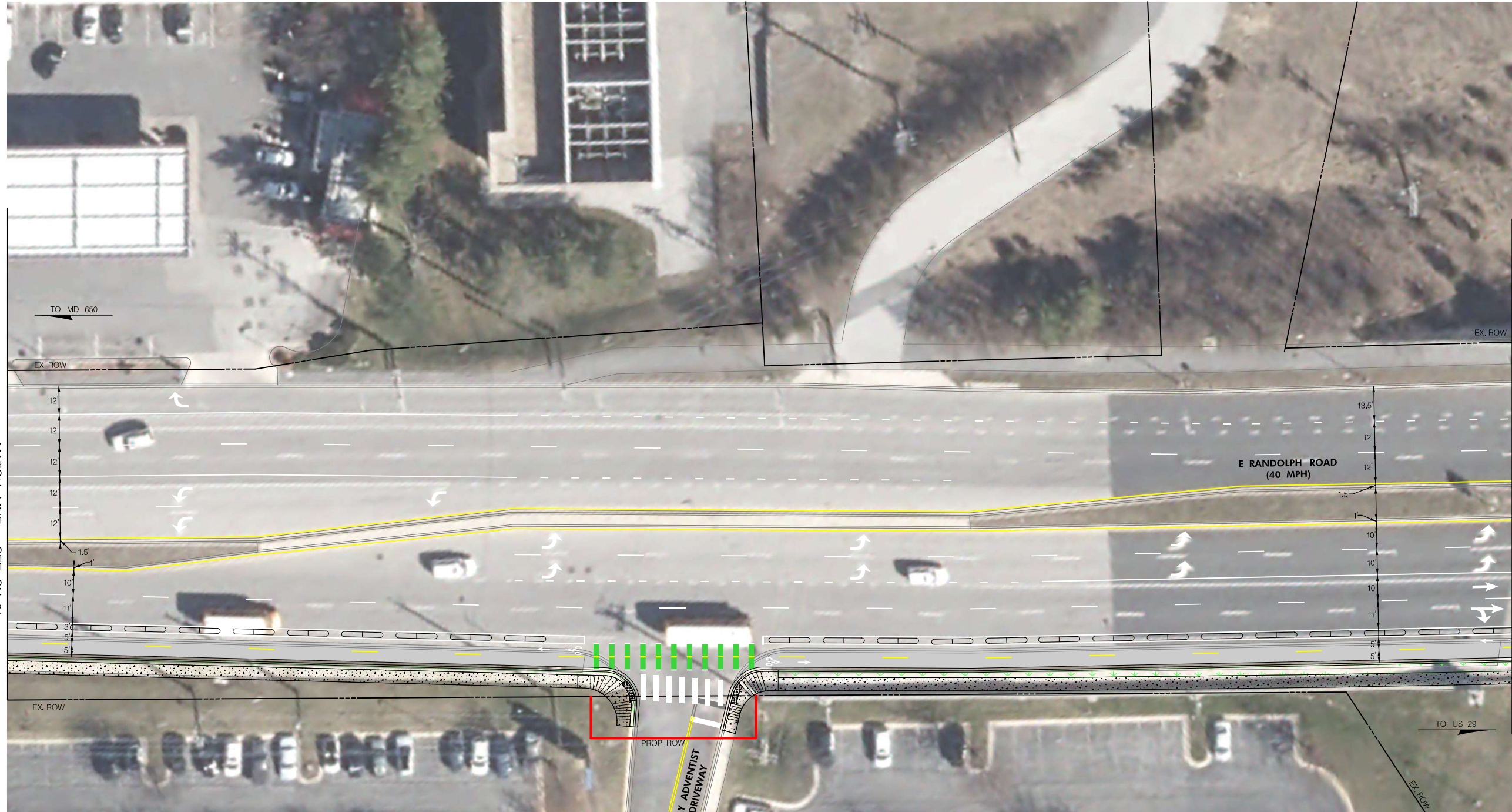
ALTERNATIVE TWO
 SIGNING AND MARKING PLAN
 CHERRY HILL BIKE FACILITIES
 IMPROVEMENT

SCALE: 1" = 20'



BY: CuiJN -

CONCEPT



SN-02

NO.	REVISION	BY	DATE

DEPARTMENT OF TRANSPORTATION
DIVISION OF TRAFFIC ENGINEERING & OPERATIONS
MONTGOMERY COUNTY, MARYLAND

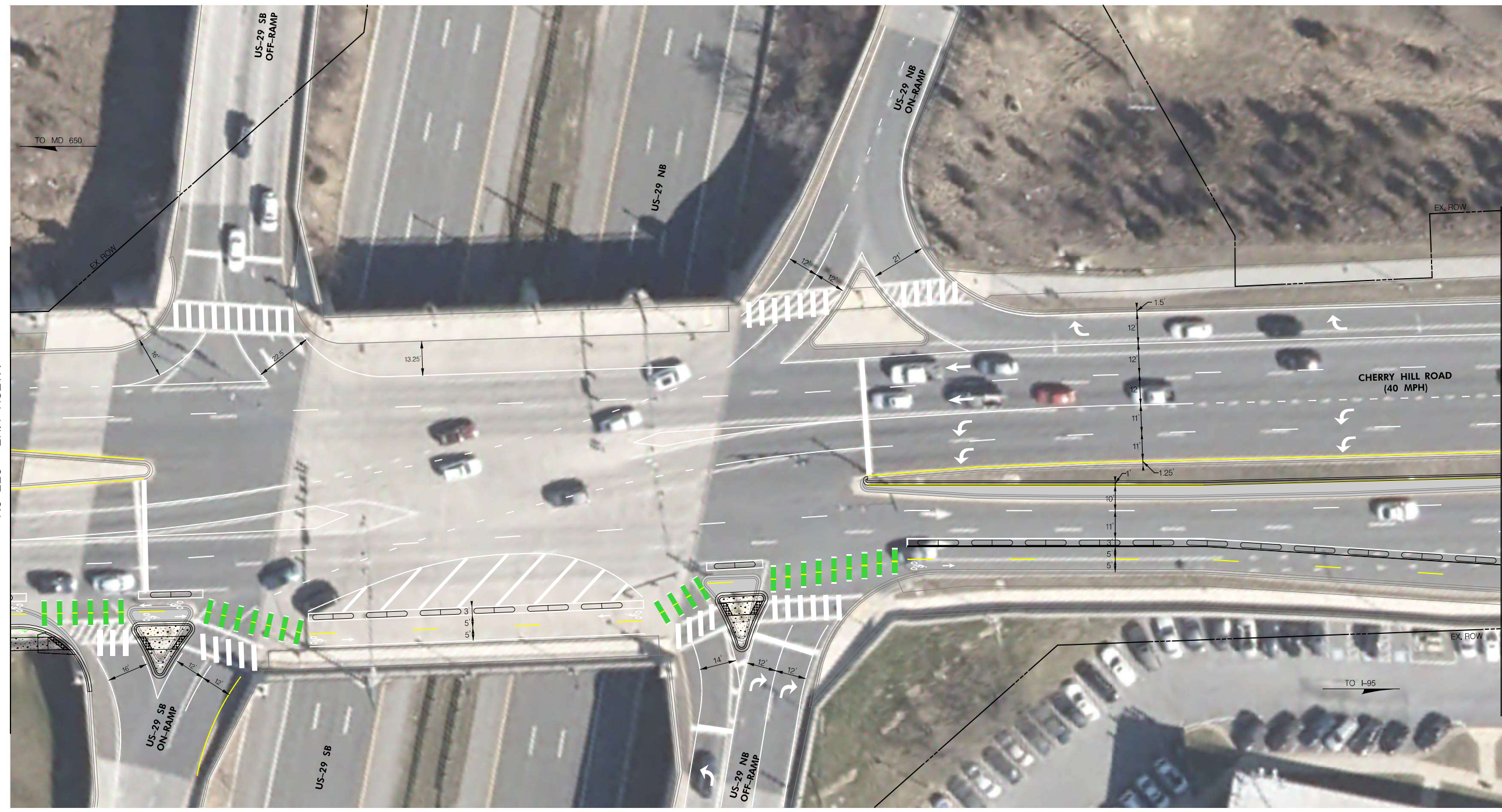
ALTERNATIVE TWO
SIGNING AND MARKING PLAN
CHERRY HILL BIKE FACILITIES
IMPROVEMENT

SCALE: 1" = 20'



BY: CuiJN -

CONCEPT



MATCH LINE - SEE SN-02

MATCH LINE - SEE SN-04

SN-03

NO.	REVISION	BY	DATE

DEPARTMENT OF TRANSPORTATION
DIVISION OF TRAFFIC ENGINEERING & OPERATIONS
MONTGOMERY COUNTY, MARYLAND

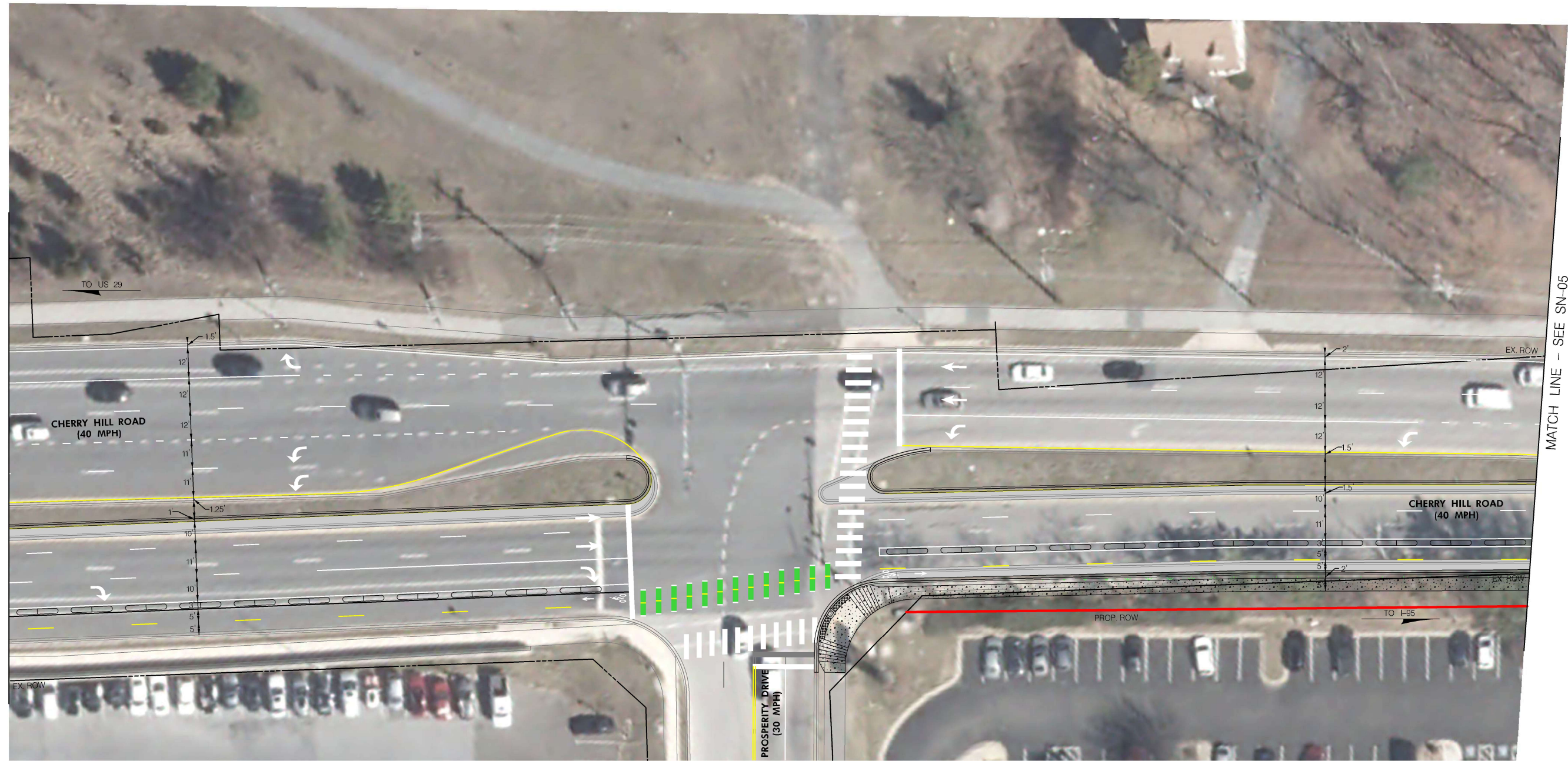
ALTERNATIVE TWO
SIGNING AND MARKING PLAN
CHERRY HILL BIKE FACILITIES
IMPROVEMENT

SCALE: 1" = 20'



BY: CuiJN -

CONCEPT



MATCH LINE - SEE SN-03

MATCH LINE - SEE SN-05

SN-04

NO.	REVISION	BY	DATE

DEPARTMENT OF TRANSPORTATION
DIVISION OF TRAFFIC ENGINEERING & OPERATIONS
MONTGOMERY COUNTY, MARYLAND

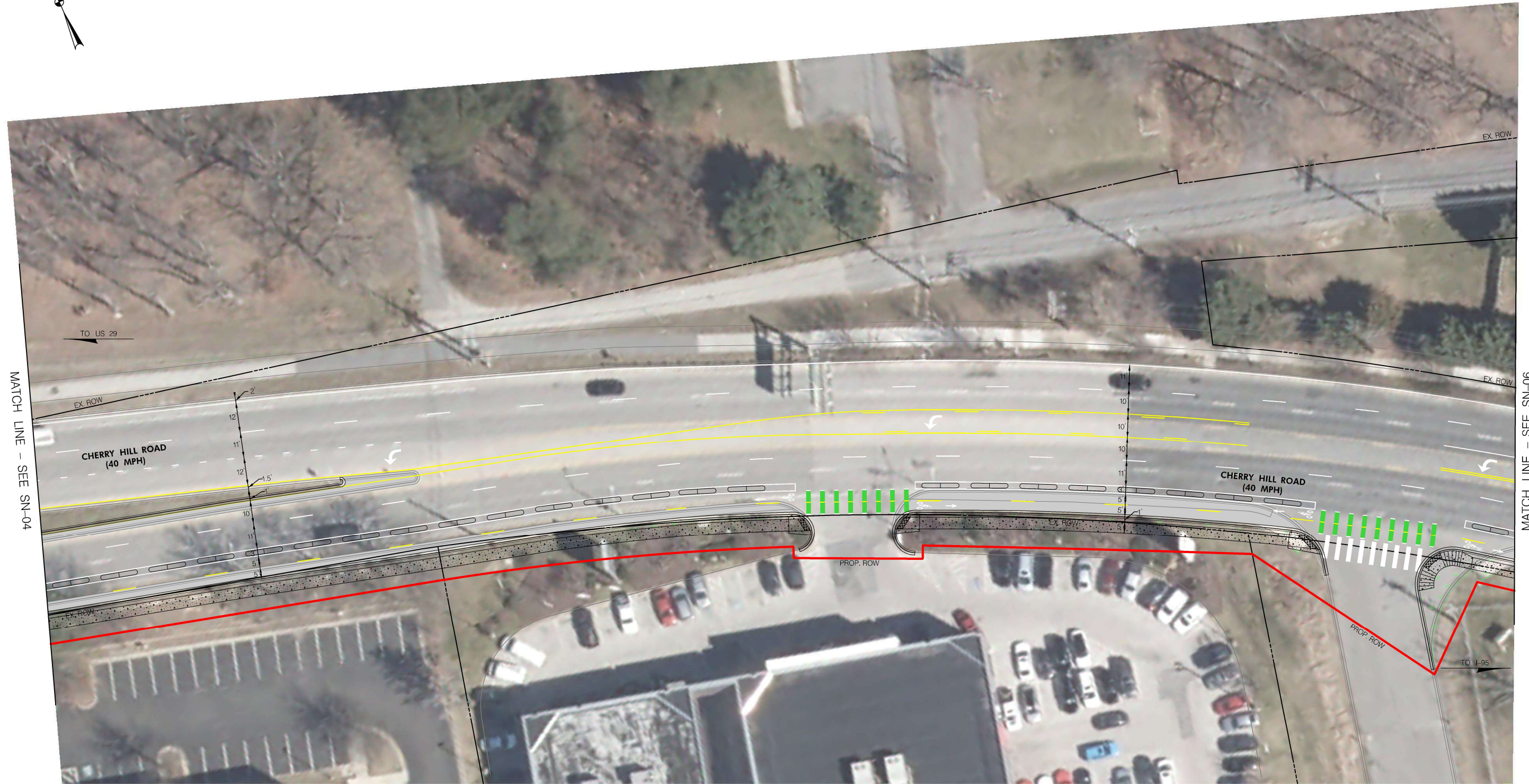
ALTERNATIVE TWO
SIGNING AND MARKING PLAN
CHERRY HILL BIKE FACILITIES
IMPROVEMENT

SCALE: 1" = 20'



BY: CuiJIN -

CONCEPT



MATCH LINE - SEE SN-04

MATCH LINE - SEE SN-06

SN-05

NO.	REVISION	BY	DATE

DEPARTMENT OF TRANSPORTATION
 DIVISION OF TRAFFIC ENGINEERING & OPERATIONS
 MONTGOMERY COUNTY, MARYLAND

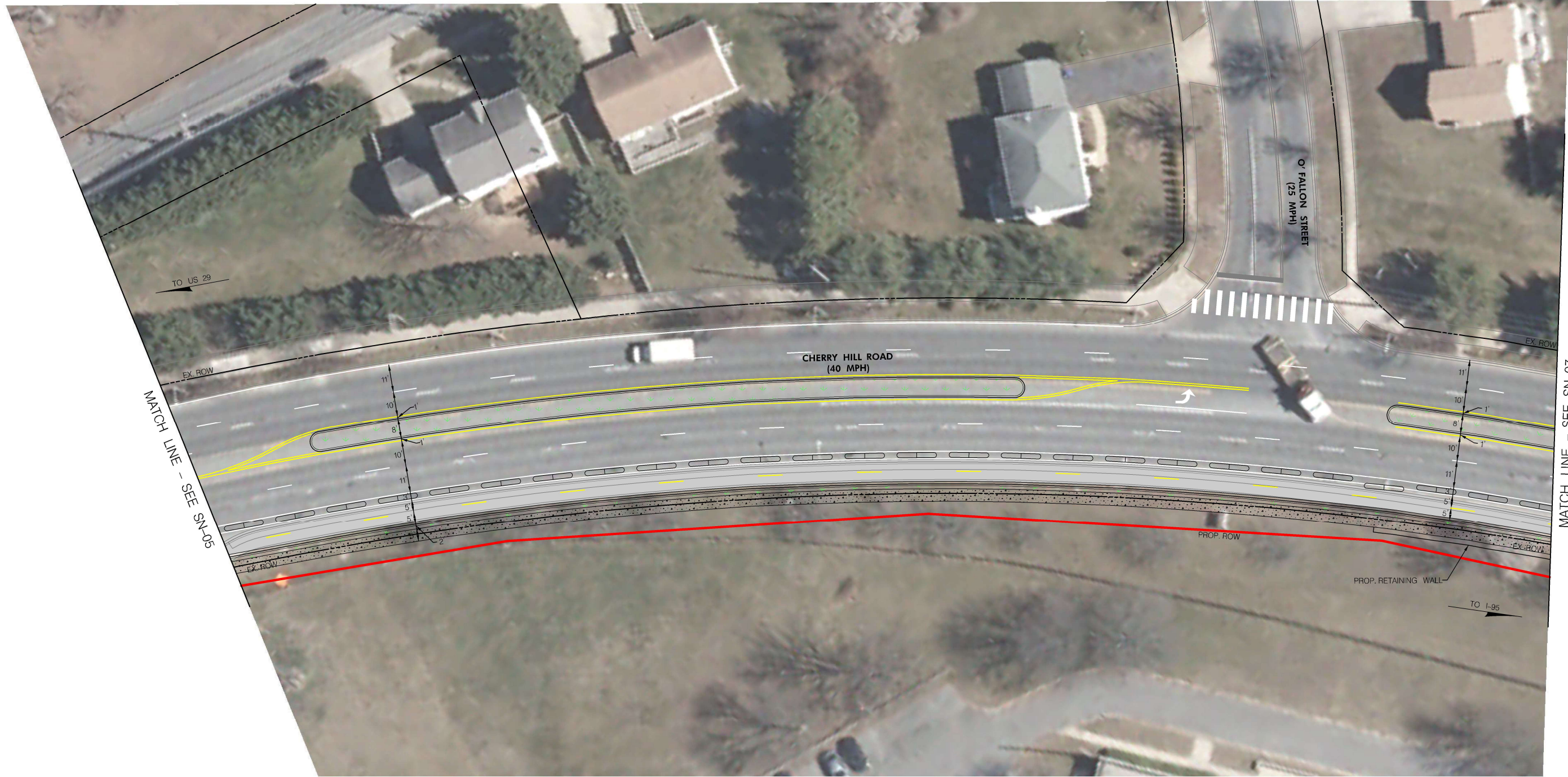
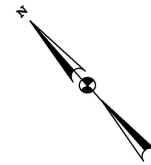
ALTERNATIVE TWO
 SIGNING AND MARKING PLAN
 CHERRY HILL BIKE FACILITIES
 IMPROVEMENT

SCALE: 1" = 20'



BY: Cuijin -

CONCEPT



MATCH LINE - SEE SN-05

MATCH LINE - SEE SN-07

SN-06

NO.	REVISION	BY	DATE

DEPARTMENT OF TRANSPORTATION
DIVISION OF TRAFFIC ENGINEERING & OPERATIONS
MONTGOMERY COUNTY, MARYLAND

ALTERNATIVE TWO
SIGNING AND MARKING PLAN
CHERRY HILL BIKE FACILITIES
IMPROVEMENT

SCALE: 1" = 20'



BY: CuiJN -

CONCEPT



MATCH LINE - SEE SN-06

MATCH LINE - SEE SN-08

SN-07

NO.	REVISION	BY	DATE

DEPARTMENT OF TRANSPORTATION
 DIVISION OF TRAFFIC ENGINEERING & OPERATIONS
 MONTGOMERY COUNTY, MARYLAND

ALTERNATIVE TWO
 SIGNING AND MARKING PLAN
 CHERRY HILL BIKE FACILITIES
 IMPROVEMENT

SCALE: 1" = 20'



BY: CuiJN -

CONCEPT



MATCH LINE - SEE SN-07

MATCH LINE - SEE SN-09

SN-08

NO.	REVISION	BY	DATE

DEPARTMENT OF TRANSPORTATION
DIVISION OF TRAFFIC ENGINEERING & OPERATIONS
MONTGOMERY COUNTY, MARYLAND

ALTERNATIVE TWO
SIGNING AND MARKING PLAN
CHERRY HILL BIKE FACILITIES
IMPROVEMENT

SCALE: 1" = 20'



BY: CuiJN -

CONCEPT



MATCH LINE - SEE SN-08

MATCH LINE - SEE SN-10

SN-09

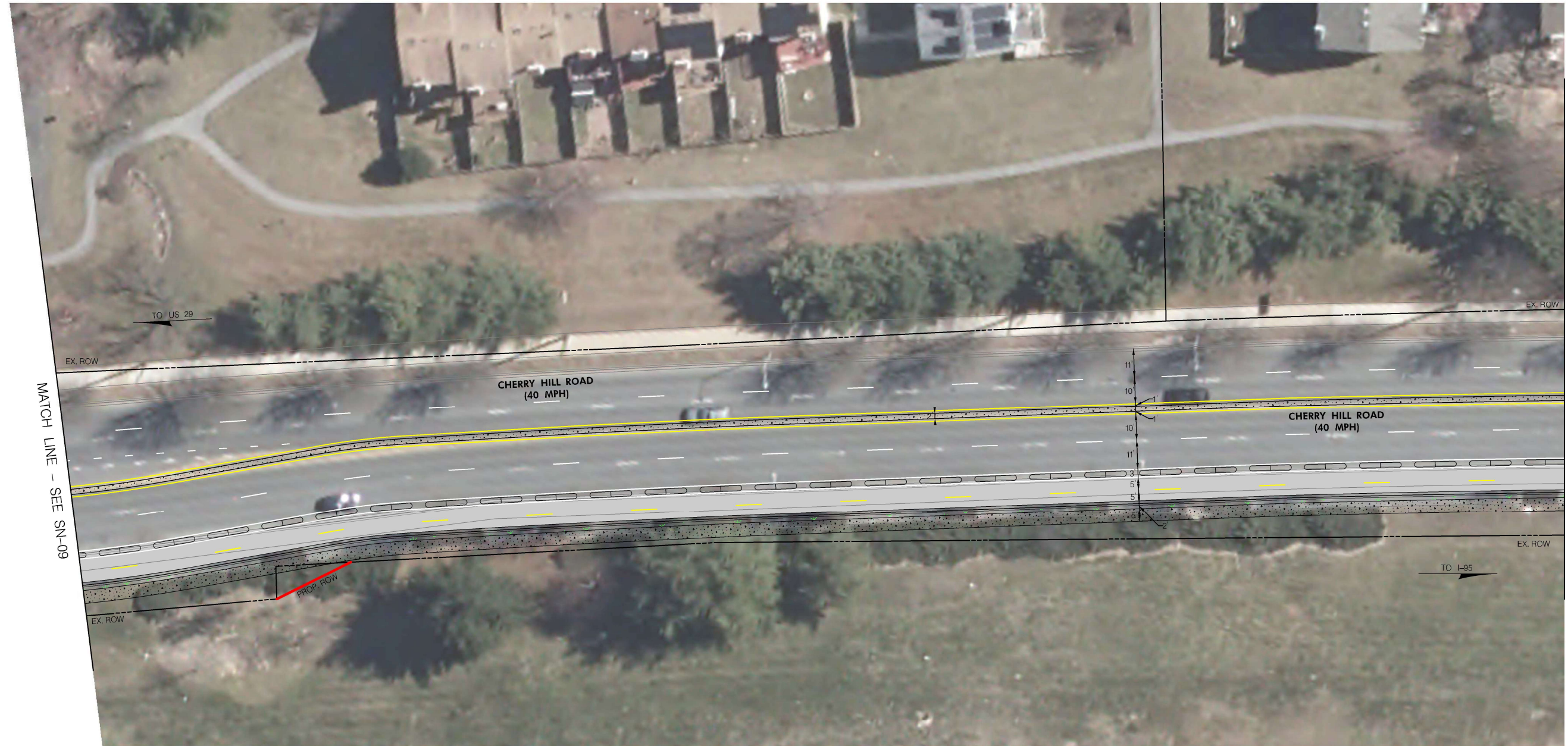
NO.	REVISION	BY	DATE	DEPARTMENT OF TRANSPORTATION DIVISION OF TRAFFIC ENGINEERING & OPERATIONS MONTGOMERY COUNTY, MARYLAND
				ALTERNATIVE TWO SIGNING AND MARKING PLAN CHERRY HILL BIKE FACILITIES IMPROVEMENT

SCALE: 1" = 20'

CONCEPT

BY: CuiJN -





SN-10

NO.	REVISION	BY	DATE	DEPARTMENT OF TRANSPORTATION DIVISION OF TRAFFIC ENGINEERING & OPERATIONS MONTGOMERY COUNTY, MARYLAND
				ALTERNATIVE TWO SIGNING AND MARKING PLAN CHERRY HILL BIKE FACILITIES IMPROVEMENT

SCALE: 1" = 20'



BY: CuiJN -

CONCEPT



MATCH LINE - SEE SN-10

MATCH LINE - SEE SN-12

SN-11

NO.	REVISION	BY	DATE

DEPARTMENT OF TRANSPORTATION
DIVISION OF TRAFFIC ENGINEERING & OPERATIONS
MONTGOMERY COUNTY, MARYLAND

ALTERNATIVE TWO
SIGNING AND MARKING PLAN
CHERRY HILL BIKE FACILITIES
IMPROVEMENT

SCALE: 1" = 20'



BY: CuiJN -

CONCEPT



MATCH LINE - SEE SN-11

MATCH LINE - SEE SN-13

SN-12

NO.	REVISION	BY	DATE

DEPARTMENT OF TRANSPORTATION
DIVISION OF TRAFFIC ENGINEERING & OPERATIONS
MONTGOMERY COUNTY, MARYLAND

ALTERNATIVE TWO
SIGNING AND MARKING PLAN
CHERRY HILL BIKE FACILITIES
IMPROVEMENT

SCALE: 1" = 20'



BY: CuiJIN -

CONCEPT



MATCH LINE - SEE SN-12

MATCH LINE - SEE SN-14

SN-13

NO.	REVISION	BY	DATE

DEPARTMENT OF TRANSPORTATION
DIVISION OF TRAFFIC ENGINEERING & OPERATIONS
MONTGOMERY COUNTY, MARYLAND

ALTERNATIVE TWO
SIGNING AND MARKING PLAN
CHERRY HILL BIKE FACILITIES
IMPROVEMENT

SCALE: 1" = 20'



BY: Cuijin -

CONCEPT



MATCH LINE - SEE SN-13

MATCH LINE - SEE SN-15

SN-14

NO.	REVISION	BY	DATE

DEPARTMENT OF TRANSPORTATION
DIVISION OF TRAFFIC ENGINEERING & OPERATIONS
MONTGOMERY COUNTY, MARYLAND

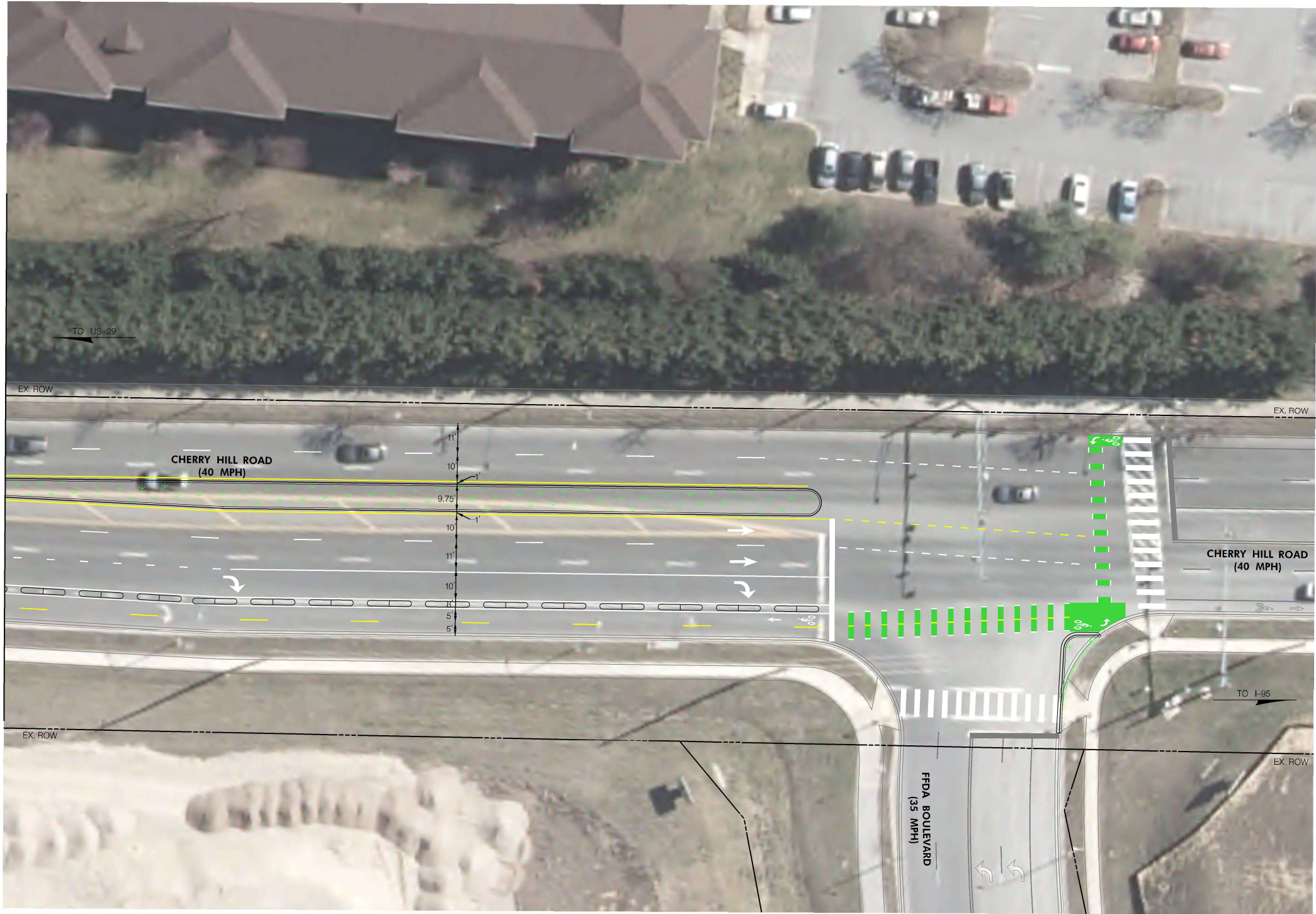
ALTERNATIVE TWO
SIGNING AND MARKING PLAN
CHERRY HILL BIKE FACILITIES
IMPROVEMENT

SCALE: 1" = 20'



BY: Cujin -

CONCEPT



MATCH LINE - SEE SN-14

SN-15

NO.	REVISION	BY	DATE

DEPARTMENT OF TRANSPORTATION
DIVISION OF TRAFFIC ENGINEERING & OPERATIONS
MONTGOMERY COUNTY, MARYLAND

ALTERNATIVE TWO
SIGNING AND MARKING PLAN
CHERRY HILL BIKE FACILITIES
IMPROVEMENT

SCALE: 1" = 20'



BY: CuiJN -

CONCEPT

PLOTTED: Thursday, October 12, 2017 AT 1:38 PM
FILE: \\stvgroup.srhinc.com\3\DGPA\3\Projects\4022152\4022152_0001\00_CAD_Models_and_Sheets\04_OT_Transportation\Concept 2 - Two Lane\04SN-2015_CherryHill_Bike_Alt2.dgn