

MATCH LINE - SEE SN-02

SN-01

NO.	REVISION	BY	DATE

DEPARTMENT OF TRANSPORTATION
DIVISION OF TRAFFIC ENGINEERING & OPERATIONS
MONTGOMERY COUNTY, MARYLAND

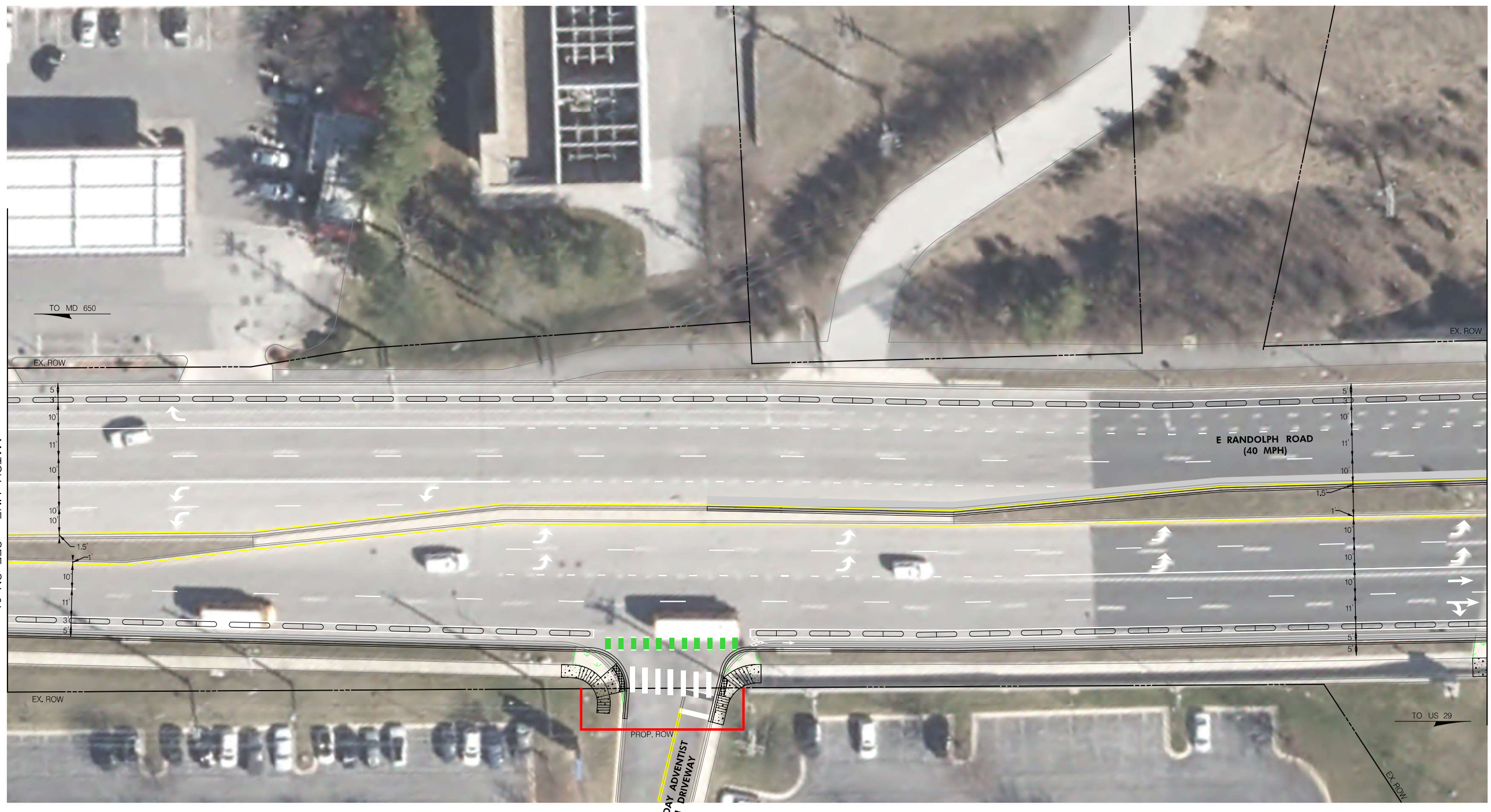
ALTERNATIVE THREE
SIGNING AND MARKING PLAN
CHERRY HILL BIKE FACILITIES
IMPROVEMENT

SCALE: 1" = 20'



BY: cujin -

CONCEPT



MATCH LINE - SEE SN-01

MATCH LINE - SEE SN-03

SN-02

NO.	REVISION	BY	DATE

DEPARTMENT OF TRANSPORTATION
DIVISION OF TRAFFIC ENGINEERING & OPERATIONS
MONTGOMERY COUNTY, MARYLAND

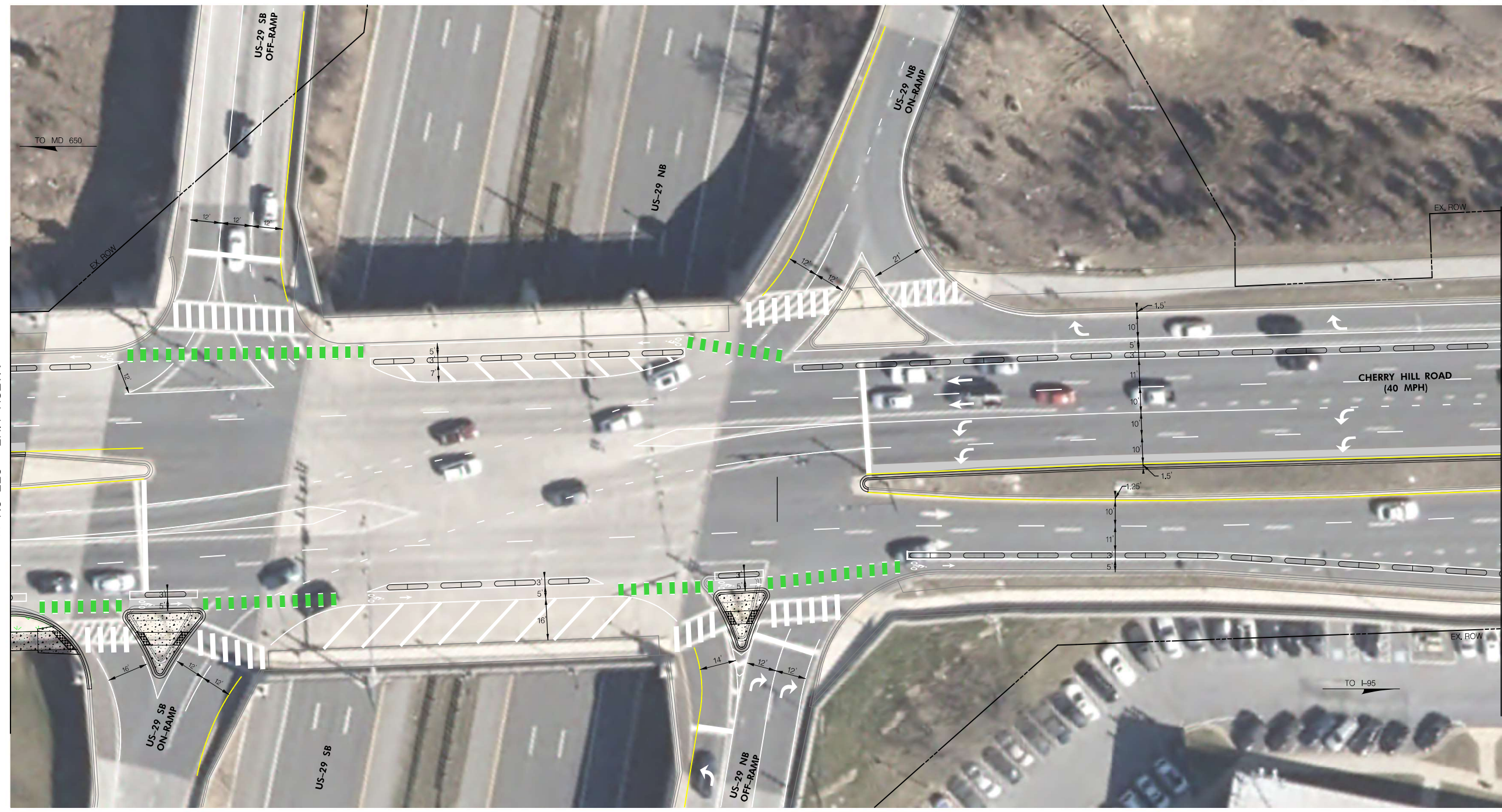
ALTERNATIVE THREE
SIGNING AND MARKING PLAN
CHERRY HILL BIKE FACILITIES
IMPROVEMENT

SCALE: 1" = 20'



BY: CuiJN -

CONCEPT



MATCH LINE - SEE SN-02

MATCH LINE - SEE SN-04

SN-03

NO.	REVISION	BY	DATE

DEPARTMENT OF TRANSPORTATION
DIVISION OF TRAFFIC ENGINEERING & OPERATIONS
MONTGOMERY COUNTY, MARYLAND

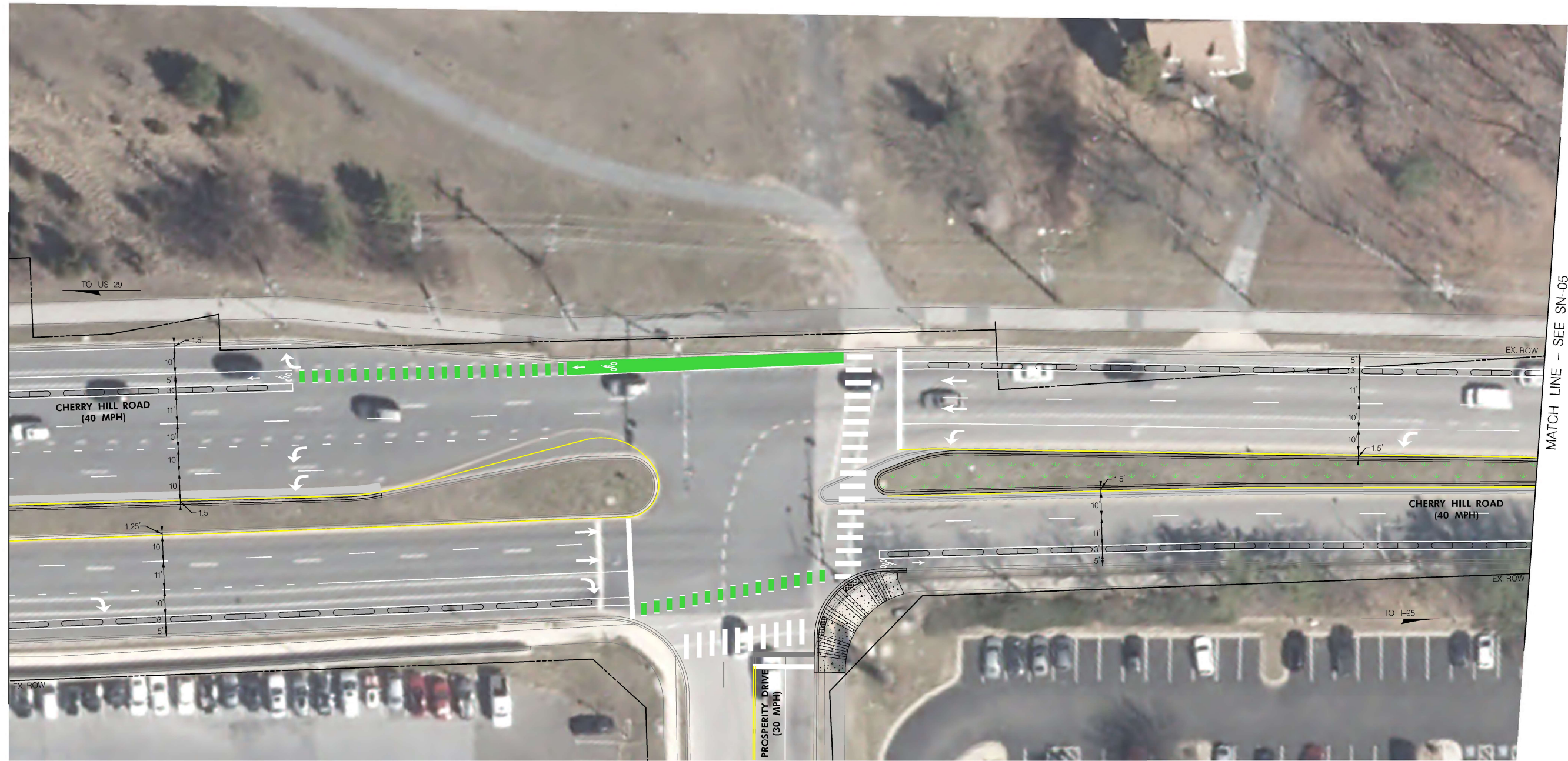
ALTERNATIVE THREE
SIGNING AND MARKING PLAN
CHERRY HILL BIKE FACILITIES
IMPROVEMENT

SCALE: 1" = 20'



BY: cujin -

CONCEPT



MATCH LINE - SEE SN-03

MATCH LINE - SEE SN-05

SN-04

NO.	REVISION	BY	DATE

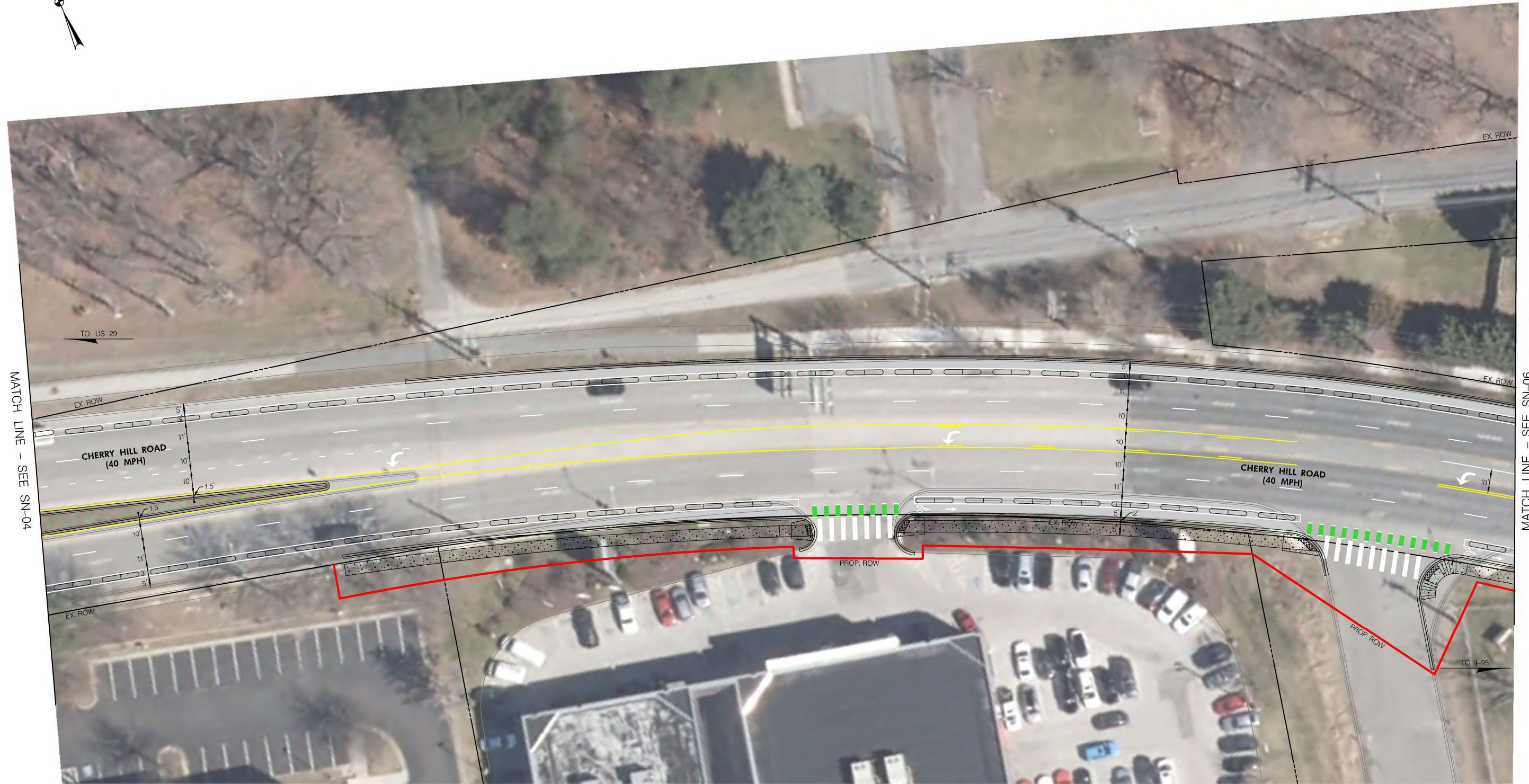
DEPARTMENT OF TRANSPORTATION
DIVISION OF TRAFFIC ENGINEERING & OPERATIONS
MONTGOMERY COUNTY, MARYLAND

ALTERNATIVE THREE
SIGNING AND MARKING PLAN
CHERRY HILL BIKE FACILITIES
IMPROVEMENT

SCALE: 1" = 20'

CONCEPT





MATCH LINE - SEE SN-04

MATCH LINE - SEE SN-06

SN-05

NO.	REVISION	BY	DATE

DEPARTMENT OF TRANSPORTATION
DIVISION OF TRAFFIC ENGINEERING & OPERATIONS
MONTGOMERY COUNTY, MARYLAND

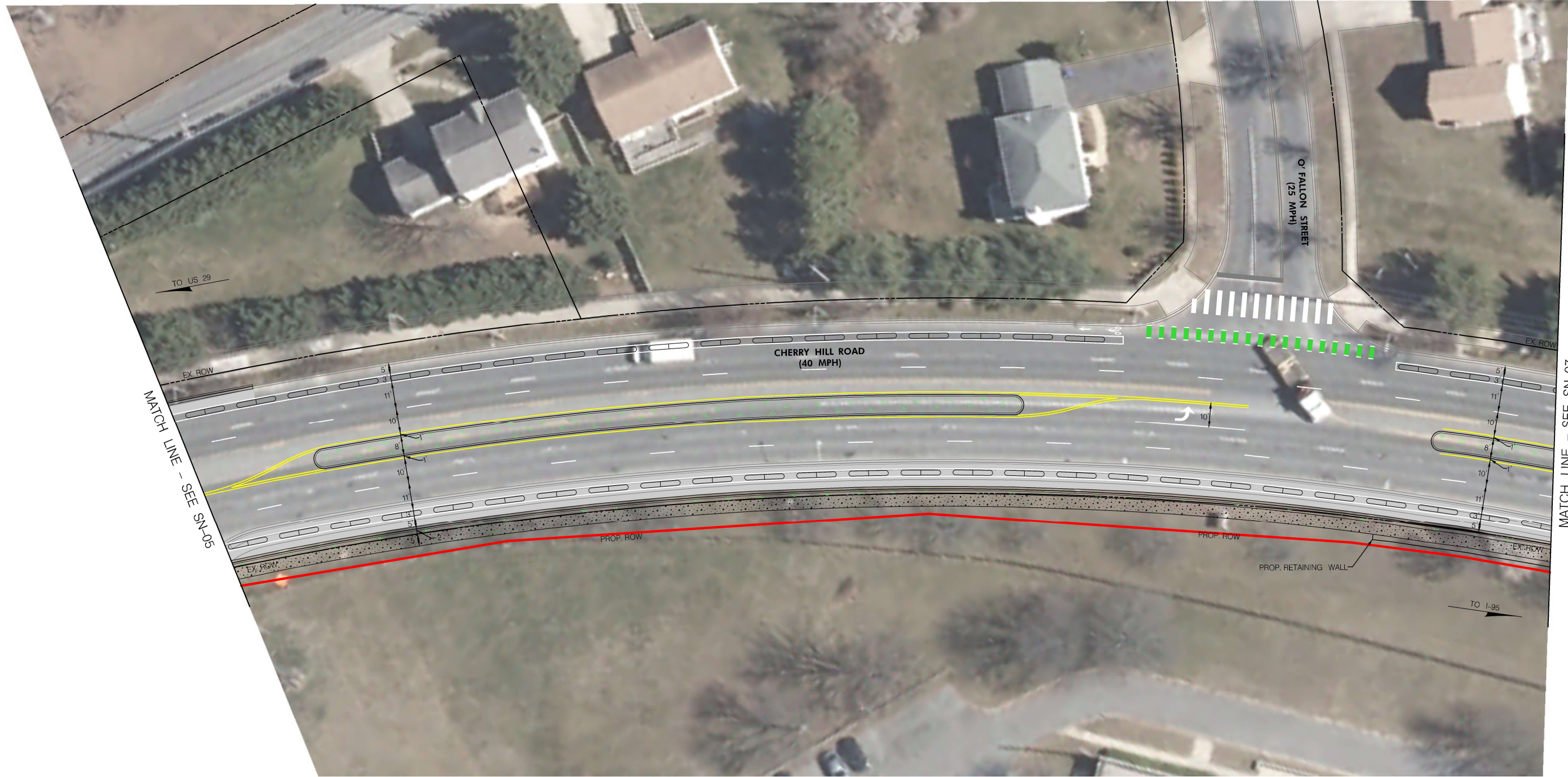
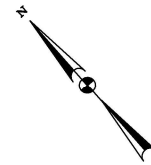
ALTERNATIVE THREE
SIGNING AND MARKING PLAN
CHERRY HILL BIKE FACILITIES
IMPROVEMENT

SCALE: 1" = 20'



BY: cujin -

CONCEPT



MATCH LINE - SEE SN-07

MATCH LINE - SEE SN-05

SN-06

NO.	REVISION	BY	DATE

DEPARTMENT OF TRANSPORTATION
DIVISION OF TRAFFIC ENGINEERING & OPERATIONS
MONTGOMERY COUNTY, MARYLAND

ALTERNATIVE THREE
SIGNING AND MARKING PLAN
CHERRY HILL BIKE FACILITIES
IMPROVEMENT

SCALE: 1" = 20'



BY: cujin -

CONCEPT



MATCH LINE - SEE SN-06

MATCH LINE - SEE SN-08

SN-07



BY: cujin -

NO.	REVISION	BY	DATE

DEPARTMENT OF TRANSPORTATION
DIVISION OF TRAFFIC ENGINEERING & OPERATIONS
MONTGOMERY COUNTY, MARYLAND

ALTERNATIVE THREE
SIGNING AND MARKING PLAN
CHERRY HILL BIKE FACILITIES
IMPROVEMENT

SCALE: 1" = 20'

CONCEPT



MATCH LINE - SEE SN-07

MATCH LINE - SEE SN-09

SN-08

NO.	REVISION	BY	DATE

DEPARTMENT OF TRANSPORTATION
 DIVISION OF TRAFFIC ENGINEERING & OPERATIONS
 MONTGOMERY COUNTY, MARYLAND

ALTERNATIVE THREE
 SIGNING AND MARKING PLAN
 CHERRY HILL BIKE FACILITIES
 IMPROVEMENT

SCALE: 1" = 20'



BY: cujin -

CONCEPT



MATCH LINE - SEE SN-08

MATCH LINE - SEE SN-10

SN-09

NO.	REVISION	BY	DATE

DEPARTMENT OF TRANSPORTATION
DIVISION OF TRAFFIC ENGINEERING & OPERATIONS
MONTGOMERY COUNTY, MARYLAND

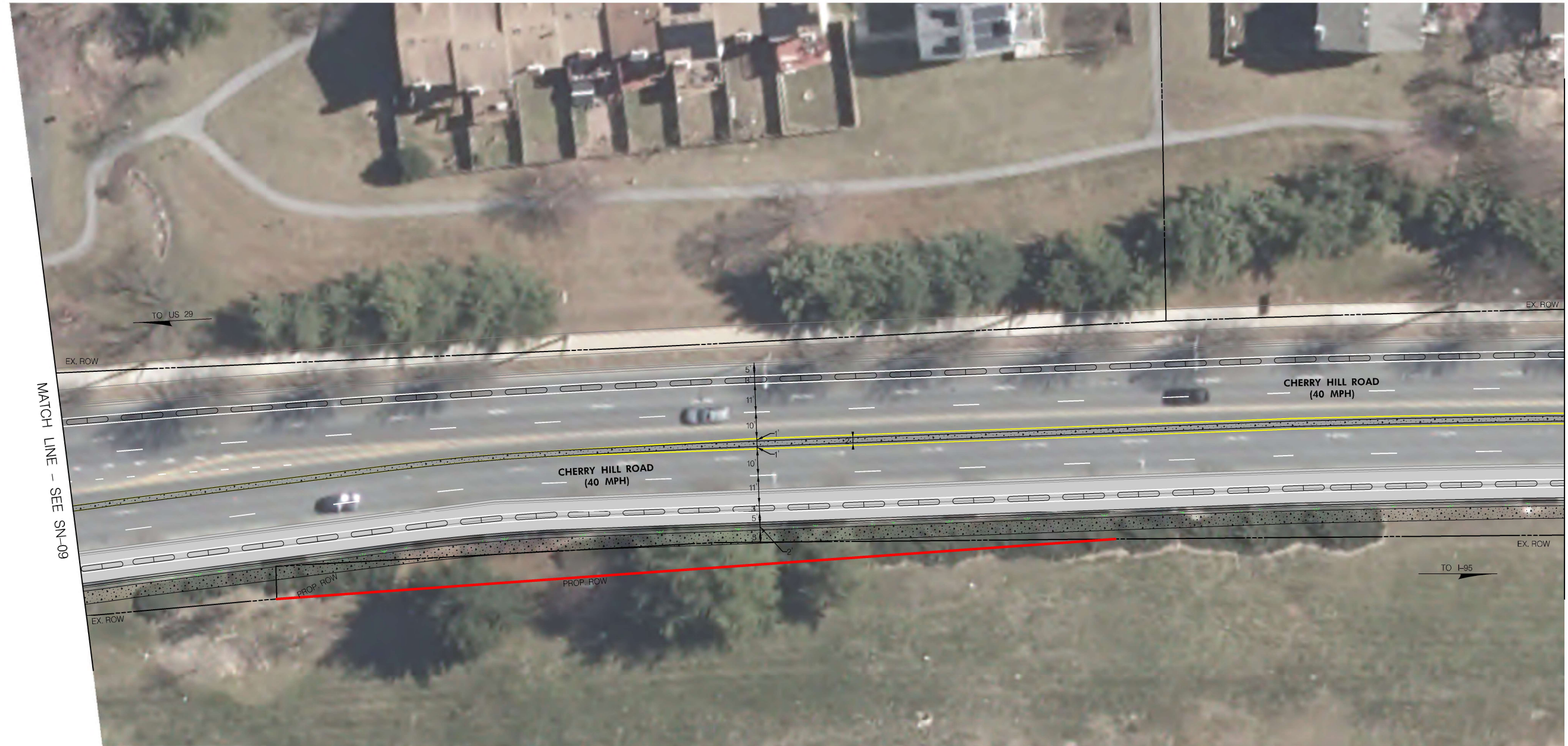
ALTERNATIVE THREE
SIGNING AND MARKING PLAN
CHERRY HILL BIKE FACILITIES
IMPROVEMENT

SCALE: 1" = 20'



BY: cujin -

CONCEPT



MATCH LINE - SEE SN-09

MATCH LINE - SEE SN-11

SN-10



BY: cujin -

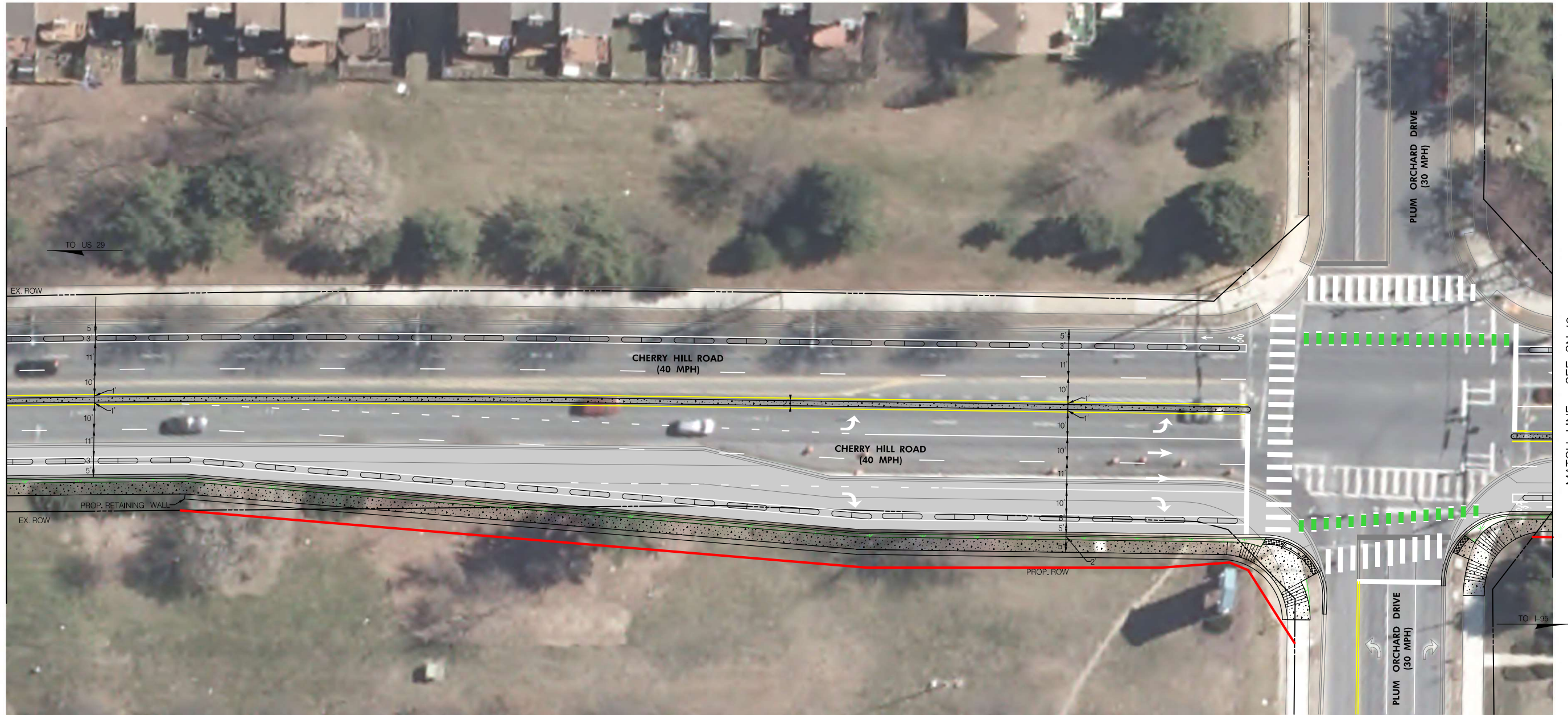
NO.	REVISION	BY	DATE

DEPARTMENT OF TRANSPORTATION
 DIVISION OF TRAFFIC ENGINEERING & OPERATIONS
 MONTGOMERY COUNTY, MARYLAND

ALTERNATIVE THREE
 SIGNING AND MARKING PLAN
 CHERRY HILL BIKE FACILITIES
 IMPROVEMENT

SCALE: 1" = 20'

CONCEPT



MATCH LINE - SEE SN-10

MATCH LINE - SEE SN-12

SN-11

NO.	REVISION	BY	DATE

DEPARTMENT OF TRANSPORTATION
DIVISION OF TRAFFIC ENGINEERING & OPERATIONS
MONTGOMERY COUNTY, MARYLAND

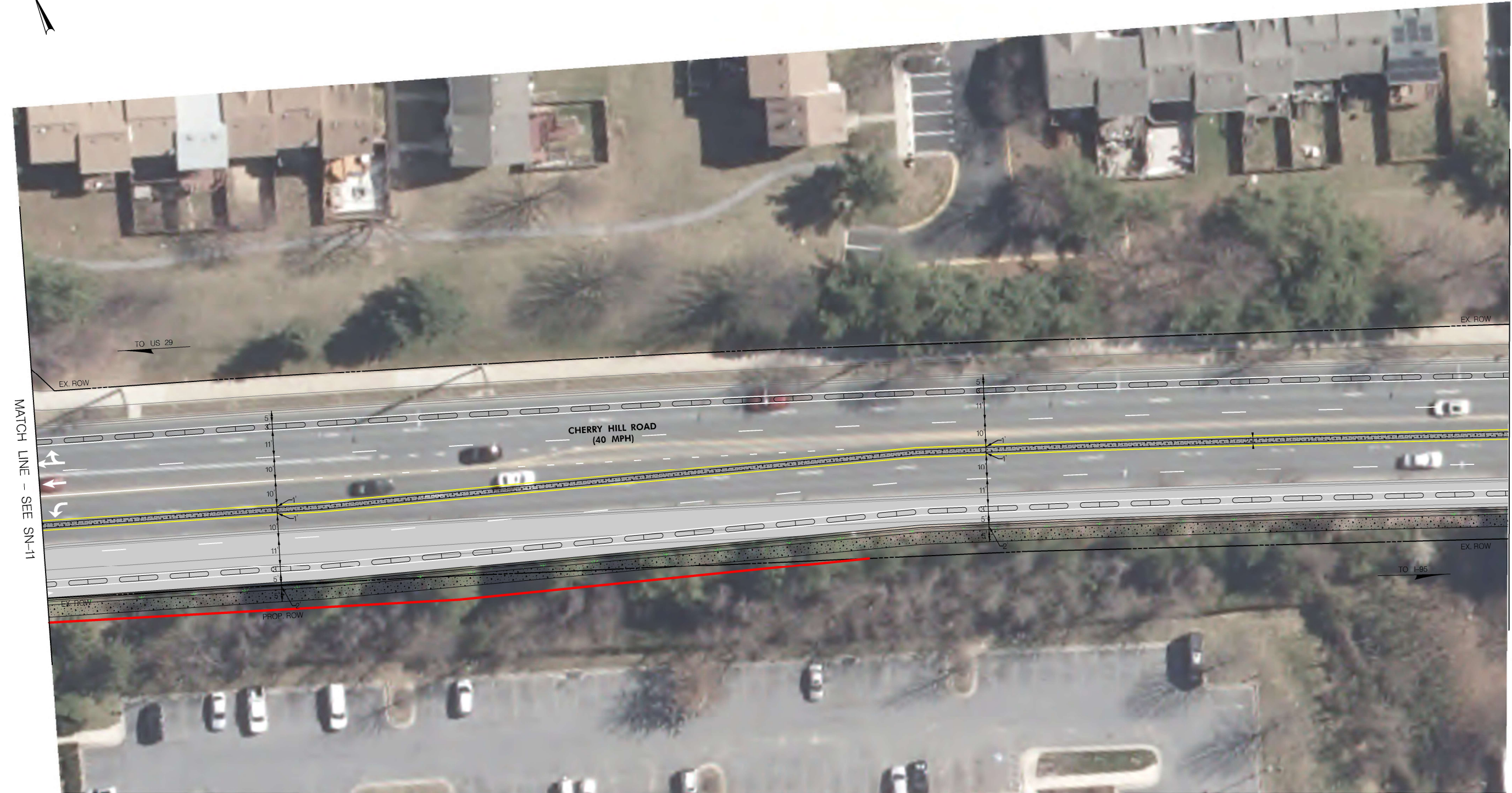
ALTERNATIVE THREE
SIGNING AND MARKING PLAN
CHERRY HILL BIKE FACILITIES
IMPROVEMENT

SCALE: 1" = 20'



BY: cujin -

CONCEPT



MATCH LINE - SEE SN-11

MATCH LINE - SEE SN-13

SN-12

NO.	REVISION	BY	DATE

DEPARTMENT OF TRANSPORTATION
 DIVISION OF TRAFFIC ENGINEERING & OPERATIONS
 MONTGOMERY COUNTY, MARYLAND

ALTERNATIVE THREE
 SIGNING AND MARKING PLAN
 CHERRY HILL BIKE FACILITIES
 IMPROVEMENT

SCALE: 1" = 20'



BY: cujin -

CONCEPT



MATCH LINE - SEE SN-12

MATCH LINE - SEE SN-14

SN-13

NO.	REVISION	BY	DATE

DEPARTMENT OF TRANSPORTATION
DIVISION OF TRAFFIC ENGINEERING & OPERATIONS
MONTGOMERY COUNTY, MARYLAND

ALTERNATIVE THREE
SIGNING AND MARKING PLAN
CHERRY HILL BIKE FACILITIES
IMPROVEMENT

SCALE: 1" = 20'



BY: cujin -

CONCEPT



MATCH LINE - SEE SN-13

MATCH LINE - SEE SN-15



BY: cujin -

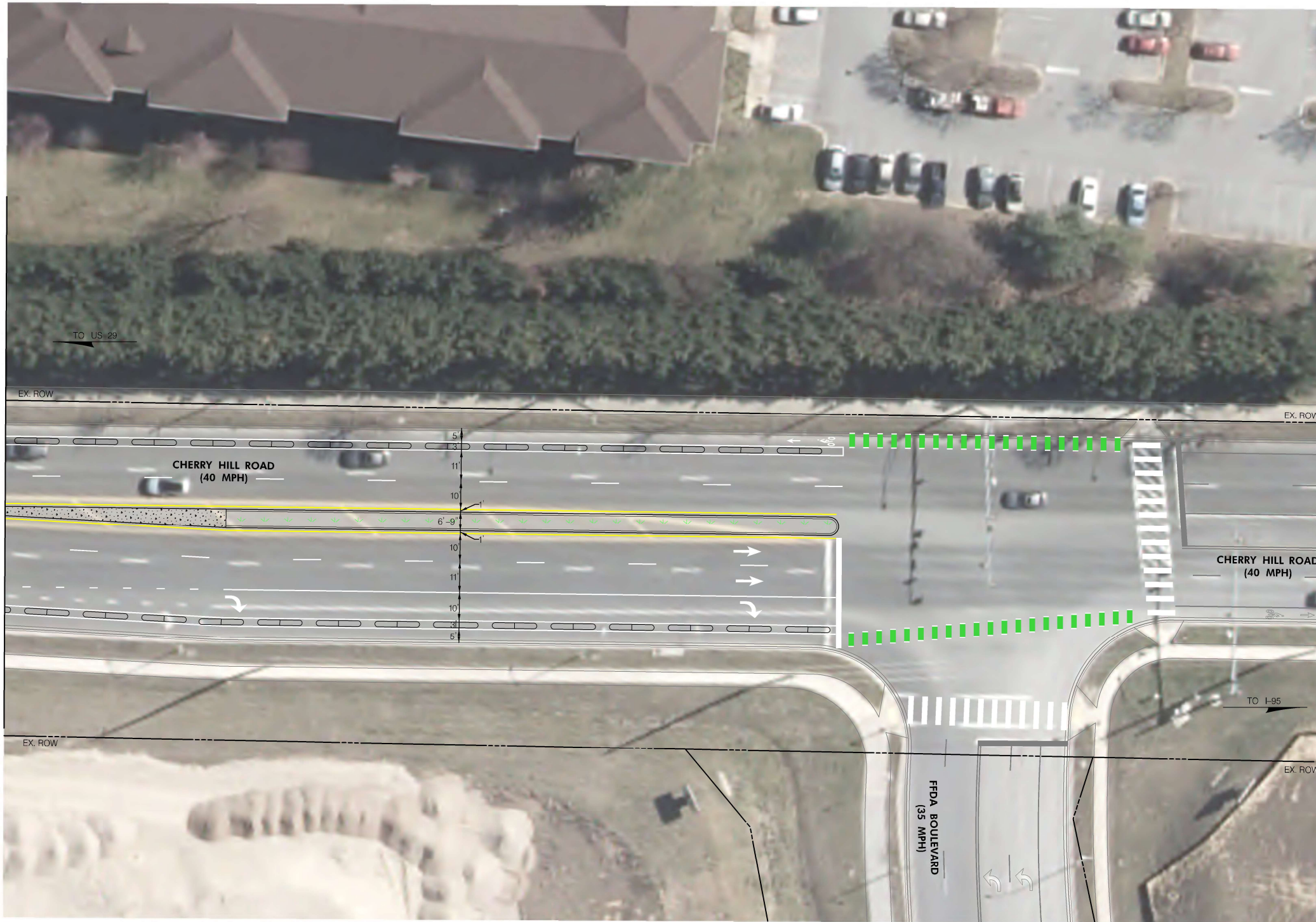
NO.	REVISION	BY	DATE

DEPARTMENT OF TRANSPORTATION
DIVISION OF TRAFFIC ENGINEERING & OPERATIONS
MONTGOMERY COUNTY, MARYLAND

ALTERNATIVE THREE
SIGNING AND MARKING PLAN
CHERRY HILL BIKE FACILITIES
IMPROVEMENT

SCALE: 1" = 20'

CONCEPT



MATCH LINE - SEE SN-14

SN-15

NO.	REVISION	BY	DATE

DEPARTMENT OF TRANSPORTATION
 DIVISION OF TRAFFIC ENGINEERING & OPERATIONS
 MONTGOMERY COUNTY, MARYLAND

ALTERNATIVE THREE
 SIGNING AND MARKING PLAN
 CHERRY HILL BIKE FACILITIES
 IMPROVEMENT

SCALE: 1" = 20'



BY: cujin -

CONCEPT