

MATCH LINE - SEE SN-02

SN-01

NO.	REVISION	BY	DATE

DEPARTMENT OF TRANSPORTATION  
DIVISION OF TRAFFIC ENGINEERING & OPERATIONS  
MONTGOMERY COUNTY, MARYLAND

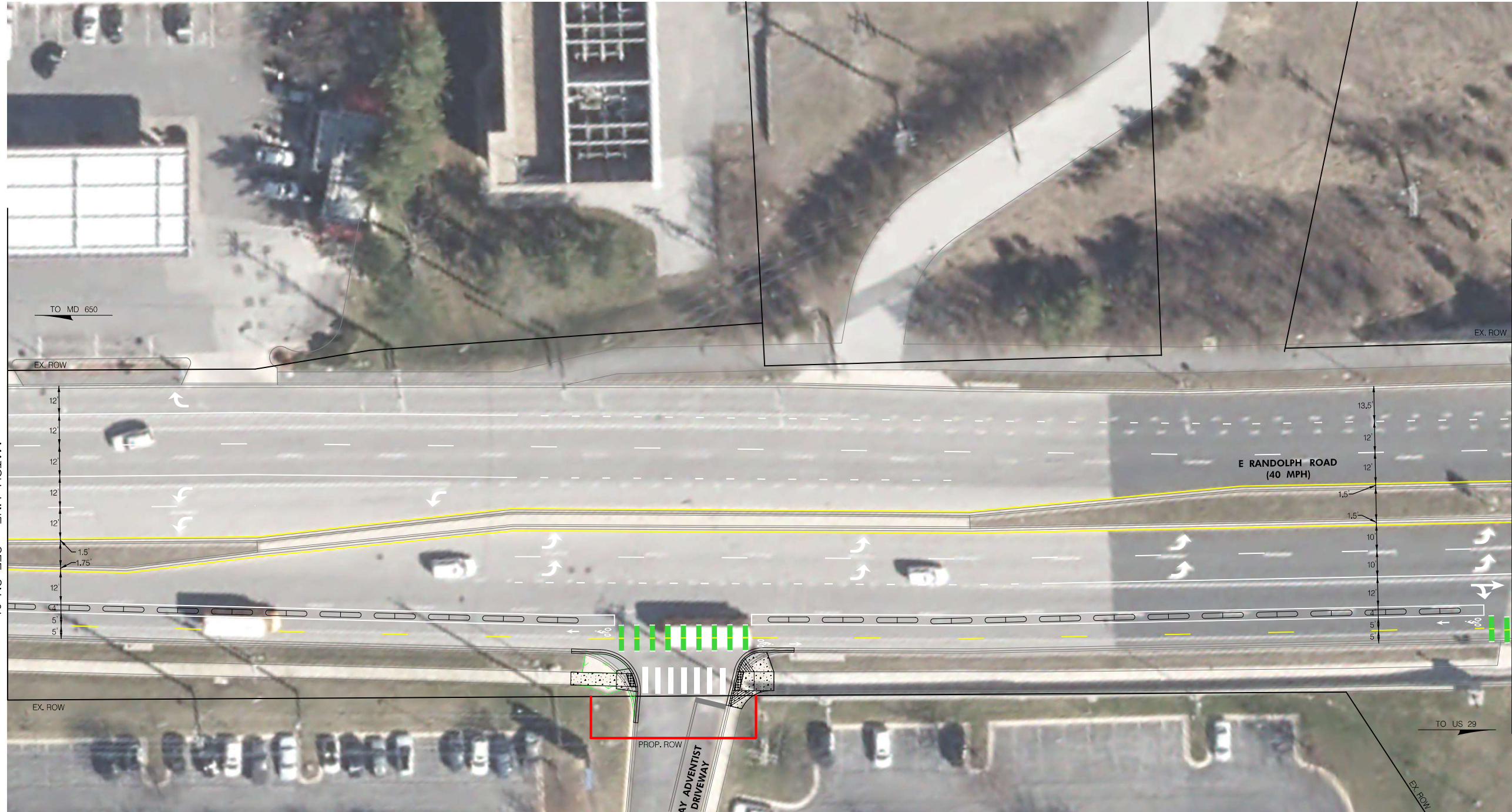
ALTERNATIVE ONE  
SIGNING AND MARKING PLAN  
CHERRY HILL BIKE FACILITIES  
IMPROVEMENT

SCALE: 1" = 20'



BY: CuiJN -

CONCEPT



MATCH LINE - SEE SN-01

MATCH LINE - SEE SN-03

SEVENTH-DAY ADVENTIST  
CHURCH DRIVEWAY

SN-02

NO.	REVISION	BY	DATE

DEPARTMENT OF TRANSPORTATION  
DIVISION OF TRAFFIC ENGINEERING & OPERATIONS  
MONTGOMERY COUNTY, MARYLAND

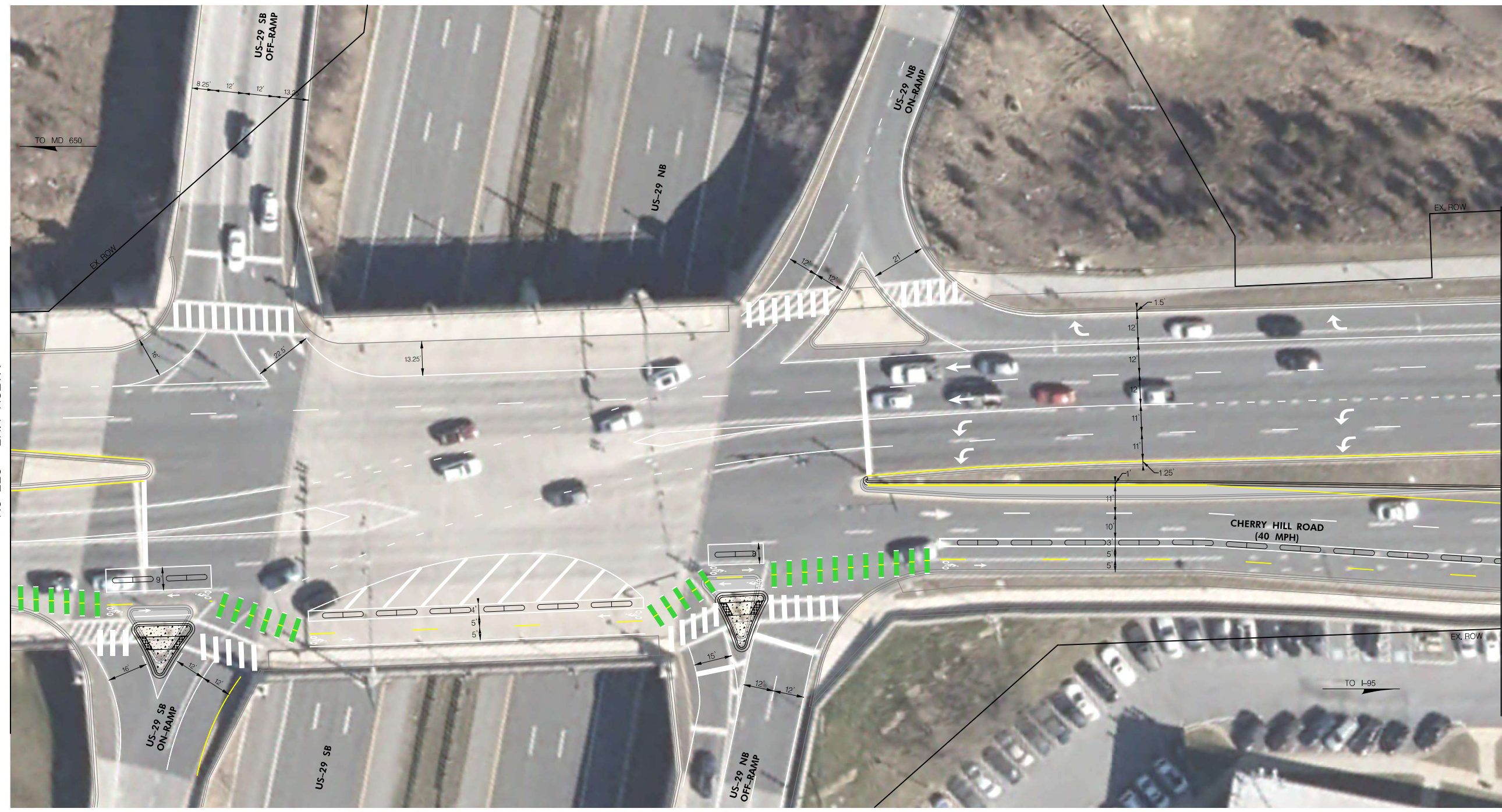
ALTERNATIVE ONE  
SIGNING AND MARKING PLAN  
CHERRY HILL BIKE FACILITIES  
IMPROVEMENT

SCALE: 1" = 20'



BY: CuiJN -

CONCEPT



MATCH LINE - SEE SN-02

MATCH LINE - SEE SN-04

SN-03

NO.	REVISION	BY	DATE

DEPARTMENT OF TRANSPORTATION  
DIVISION OF TRAFFIC ENGINEERING & OPERATIONS  
MONTGOMERY COUNTY, MARYLAND

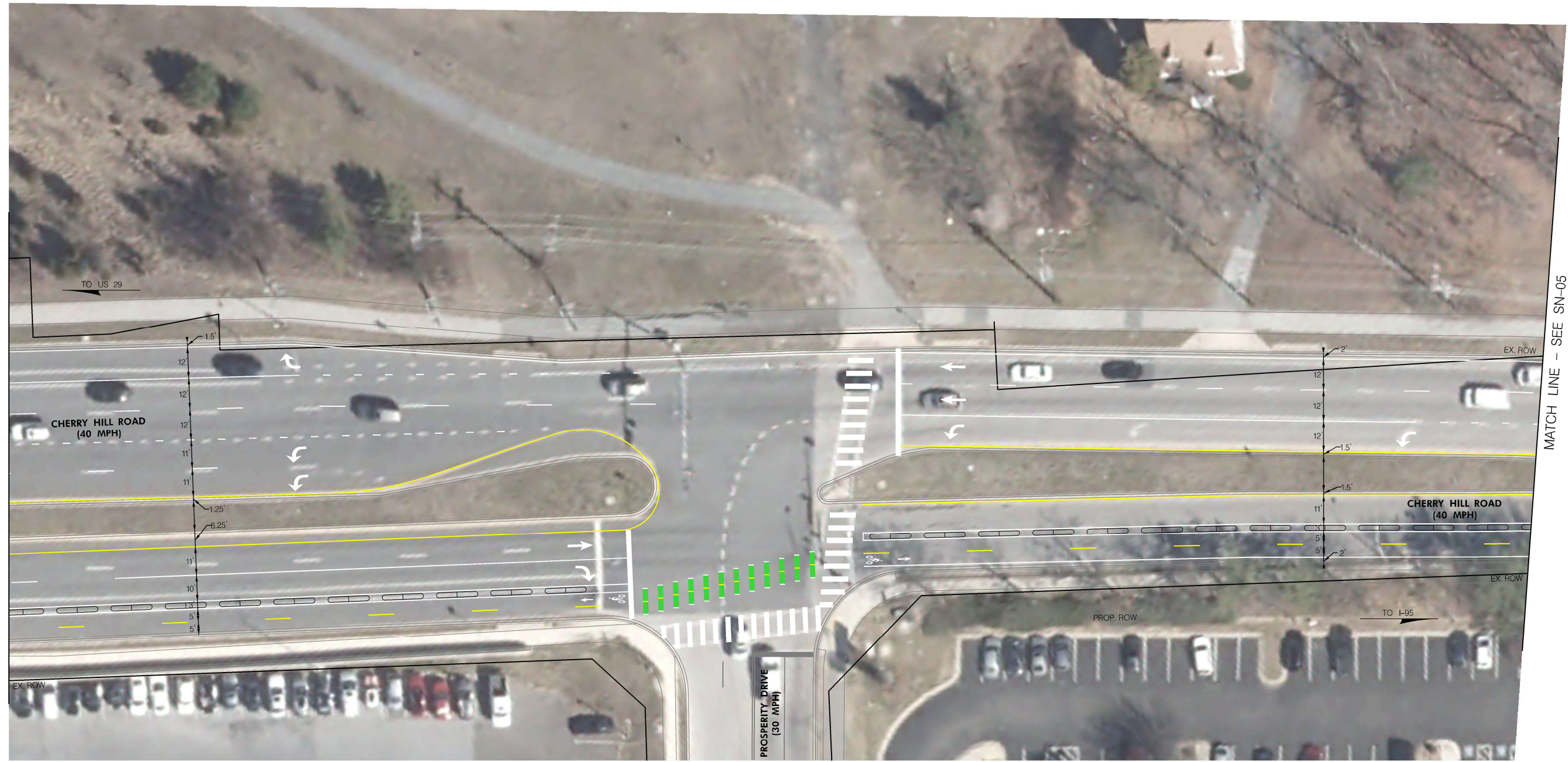
ALTERNATIVE ONE  
SIGNING AND MARKING PLAN  
CHERRY HILL BIKE FACILITIES  
IMPROVEMENT

SCALE: 1" = 20'



BY: CuiJN -

CONCEPT



MATCH LINE - SEE SN-03

MATCH LINE - SEE SN-05

SN-04

NO.	REVISION	BY	DATE

DEPARTMENT OF TRANSPORTATION  
DIVISION OF TRAFFIC ENGINEERING & OPERATIONS  
MONTGOMERY COUNTY, MARYLAND

ALTERNATIVE ONE  
SIGNING AND MARKING PLAN  
CHERRY HILL BIKE FACILITIES  
IMPROVEMENT

SCALE: 1" = 20'



BY: CuiJIN -

CONCEPT



MATCH LINE - SEE SN-04

MATCH LINE - SEE SN-06

SN-05



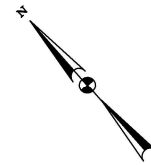
BY: Cuijin

NO.	REVISION	BY	DATE

DEPARTMENT OF TRANSPORTATION  
DIVISION OF TRAFFIC ENGINEERING & OPERATIONS  
MONTGOMERY COUNTY, MARYLAND

ALTERNATIVE ONE  
SIGNING AND MARKING PLAN  
CHERRY HILL BIKE FACILITIES  
IMPROVEMENT  
SCALE: 1" = 20'

CONCEPT



SN-06

NO.	REVISION	BY	DATE

DEPARTMENT OF TRANSPORTATION  
DIVISION OF TRAFFIC ENGINEERING & OPERATIONS  
MONTGOMERY COUNTY, MARYLAND

ALTERNATIVE ONE  
SIGNING AND MARKING PLAN  
CHERRY HILL BIKE FACILITIES  
IMPROVEMENT

SCALE: 1" = 20'



BY: CuiJN -

CONCEPT



MATCH LINE - SEE SN-06

MATCH LINE - SEE SN-08

SN-07

NO.	REVISION	BY	DATE

DEPARTMENT OF TRANSPORTATION  
DIVISION OF TRAFFIC ENGINEERING & OPERATIONS  
MONTGOMERY COUNTY, MARYLAND

ALTERNATIVE ONE  
SIGNING AND MARKING PLAN  
CHERRY HILL BIKE FACILITIES  
IMPROVEMENT

SCALE: 1" = 20'



BY: CuiJN -

CONCEPT



MATCH LINE - SEE SN-07

MATCH LINE - SEE SN-09

SN-08

NO.	REVISION	BY	DATE	DEPARTMENT OF TRANSPORTATION DIVISION OF TRAFFIC ENGINEERING & OPERATIONS MONTGOMERY COUNTY, MARYLAND
				ALTERNATIVE ONE SIGNING AND MARKING PLAN  CHERRY HILL BIKE FACILITIES IMPROVEMENT

SCALE: 1" = 20'



BY: CuiJN -

CONCEPT





MATCH LINE - SEE SN-08

MATCH LINE - SEE SN-10

SN-09

NO.	REVISION	BY	DATE

DEPARTMENT OF TRANSPORTATION  
DIVISION OF TRAFFIC ENGINEERING & OPERATIONS  
MONTGOMERY COUNTY, MARYLAND

ALTERNATIVE ONE  
SIGNING AND MARKING PLAN  
CHERRY HILL BIKE FACILITIES  
IMPROVEMENT

SCALE: 1" = 20'



BY: Cujin -

CONCEPT



SN-10

NO.	REVISION	BY	DATE

DEPARTMENT OF TRANSPORTATION  
 DIVISION OF TRAFFIC ENGINEERING & OPERATIONS  
 MONTGOMERY COUNTY, MARYLAND

ALTERNATIVE ONE  
 SIGNING AND MARKING PLAN  
 CHERRY HILL BIKE FACILITIES  
 IMPROVEMENT

SCALE: 1" = 20'



BY: CuiJN -

CONCEPT



MATCH LINE - SEE SN-10

MATCH LINE - SEE SN-12

SN-11

NO.	REVISION	BY	DATE

DEPARTMENT OF TRANSPORTATION  
DIVISION OF TRAFFIC ENGINEERING & OPERATIONS  
MONTGOMERY COUNTY, MARYLAND

ALTERNATIVE ONE  
SIGNING AND MARKING PLAN  
CHERRY HILL BIKE FACILITIES  
IMPROVEMENT

SCALE: 1" = 20'



BY: CuiJN -

CONCEPT



MATCH LINE - SEE SN-11

MATCH LINE - SEE SN-13

SN-12

BY: CuiJN -



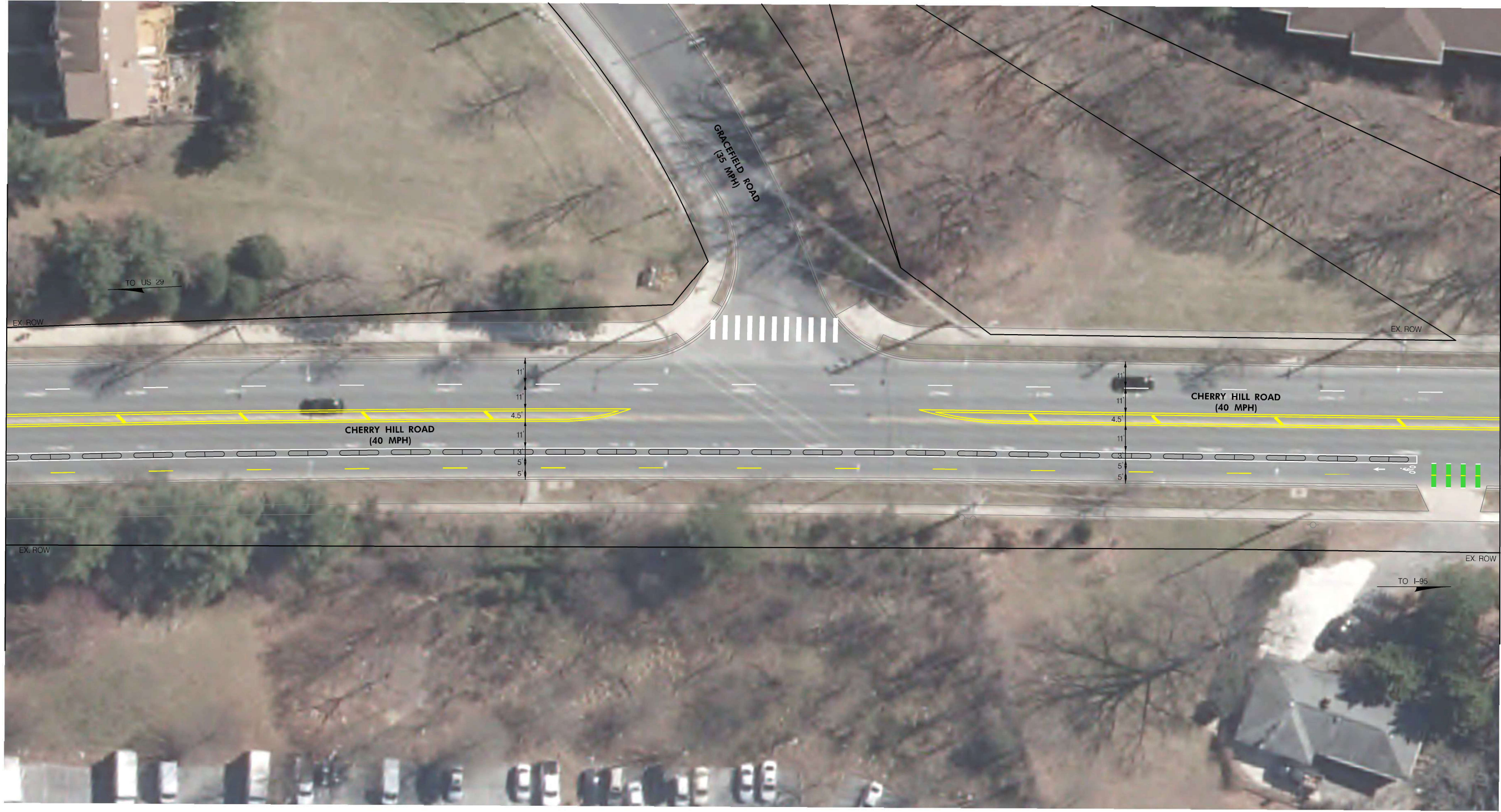
NO.	REVISION	BY	DATE

DEPARTMENT OF TRANSPORTATION  
DIVISION OF TRAFFIC ENGINEERING & OPERATIONS  
MONTGOMERY COUNTY, MARYLAND

ALTERNATIVE ONE  
SIGNING AND MARKING PLAN  
CHERRY HILL BIKE FACILITIES  
IMPROVEMENT

SCALE: 1" = 20'

CONCEPT



MATCH LINE - SEE SN-12

MATCH LINE - SEE SN-14

SN-13

NO.	REVISION	BY	DATE

DEPARTMENT OF TRANSPORTATION  
 DIVISION OF TRAFFIC ENGINEERING & OPERATIONS  
 MONTGOMERY COUNTY, MARYLAND

ALTERNATIVE ONE  
 SIGNING AND MARKING PLAN  
 CHERRY HILL BIKE FACILITIES  
 IMPROVEMENT

SCALE: 1" = 20'



BY: CuiJIN -

CONCEPT



MATCH LINE - SEE SN-13

MATCH LINE - SEE SN-15



SN-14

NO.	REVISION	BY	DATE

DEPARTMENT OF TRANSPORTATION  
DIVISION OF TRAFFIC ENGINEERING & OPERATIONS  
MONTGOMERY COUNTY, MARYLAND

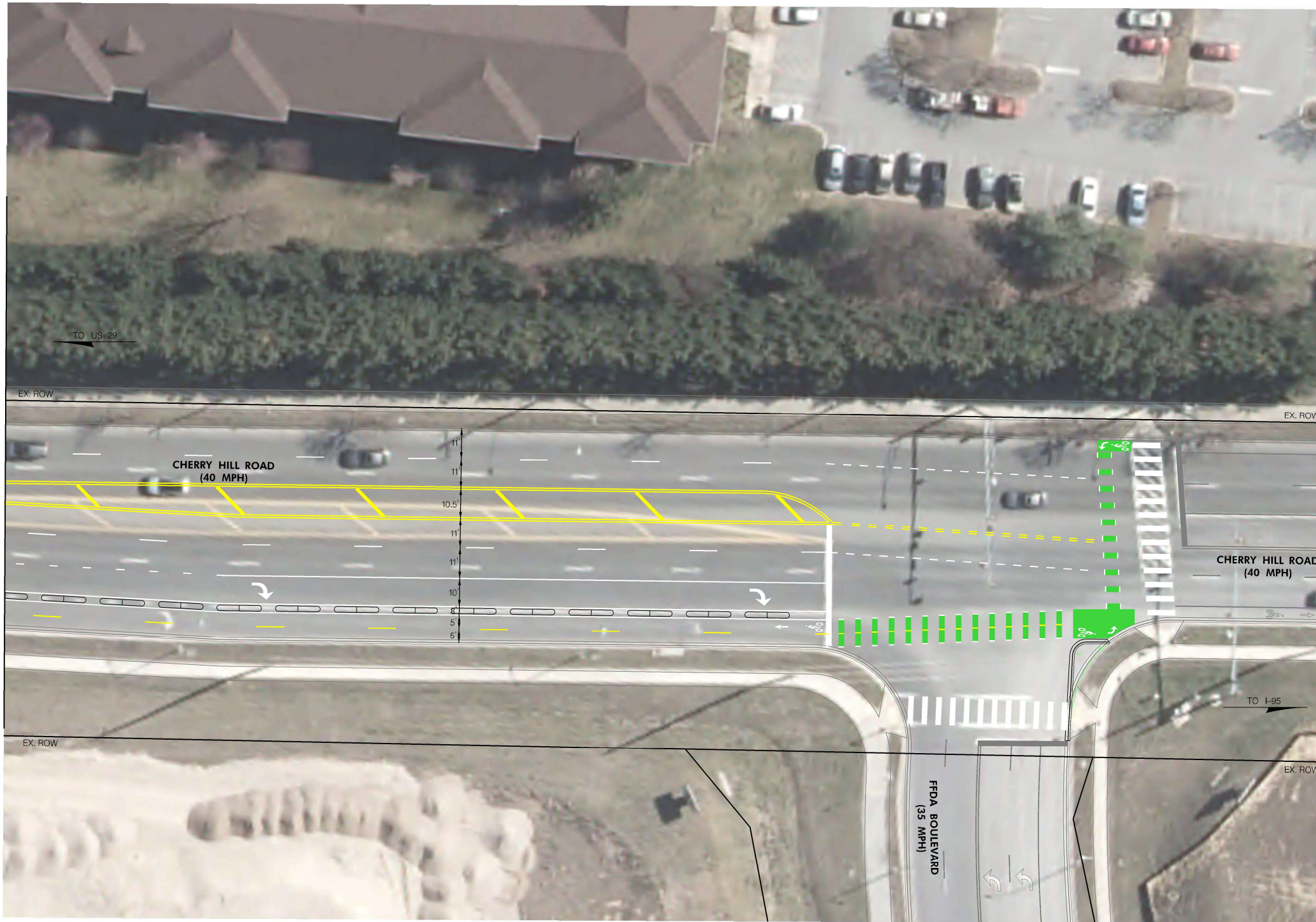
ALTERNATIVE ONE  
SIGNING AND MARKING PLAN  
CHERRY HILL BIKE FACILITIES  
IMPROVEMENT

SCALE: 1" = 20'



BY: CuiJN -

CONCEPT



MATCH LINE - SEE SN-14

SN-15

NO.	REVISION	BY	DATE	DEPARTMENT OF TRANSPORTATION DIVISION OF TRAFFIC ENGINEERING & OPERATIONS MONTGOMERY COUNTY, MARYLAND
				SCALE: 1" = 20'

CONCEPT

BY: CuiJN -

