

WELCOME

MONTGOMERY COUNTY
DEPARTMENT OF TRANSPORTATION

DALE DRIVE SHARED USE PATH & SAFETY IMPROVEMENTS

VIRTUAL PUBLIC HEARING
NOVEMBER 17, 2021

We will begin shortly. The Public Hearing will be recorded.



WELCOME

MONTGOMERY COUNTY
DEPARTMENT OF TRANSPORTATION

DALE DRIVE SHARED USE PATH & SAFETY IMPROVEMENTS

VIRTUAL PUBLIC HEARING
NOVEMBER 17, 2021

The Public Hearing is being recorded.



PUBLIC HEARING FORMAT

- Cameras and microphones have been turned off to reduce the bandwidth of the meeting
- Verbal Testimony
 - Those who wish to testify will be asked to “raise hand” and unmuted when it is their turn to speak
 - “Raise hand” icon is located at the bottom of the screen under the “Reactions” button
- Written Testimony
 - May be submitted and will be considered with the same weight as oral testimony
- Questions and Answers will follow the Testimony Portion of the Hearing
 - “Raise hand” to ask a question or type it into the Chat Box by clicking “Chat” button on the bottom of screen

NOVEMBER 2021



PURPOSE OF PUBLIC HEARING

Hearing held pursuant to Section 49-53 of the Montgomery County Code

- Obtain testimony regarding the potential project
- Comments/testimony should be focused entirely on the Dale Drive Shared Use Path & Safety Improvements project
- All interested persons are entitled to be heard at this hearing; however, the testimony portion of this hearing is not a forum for dialogue, questions and answers, or cross-examination

NOVEMBER 2021



PUBLIC HEARING RECORD

The Public Hearing Record will remain open for two weeks to allow any person an opportunity to have their comments included.

Official Closing Date for Comments and Testimony
Wednesday, December 1, 2021
At 7:00 PM

Submissions can be made via:

E-mail

Angel.Cheng@montgomerycountymd.gov

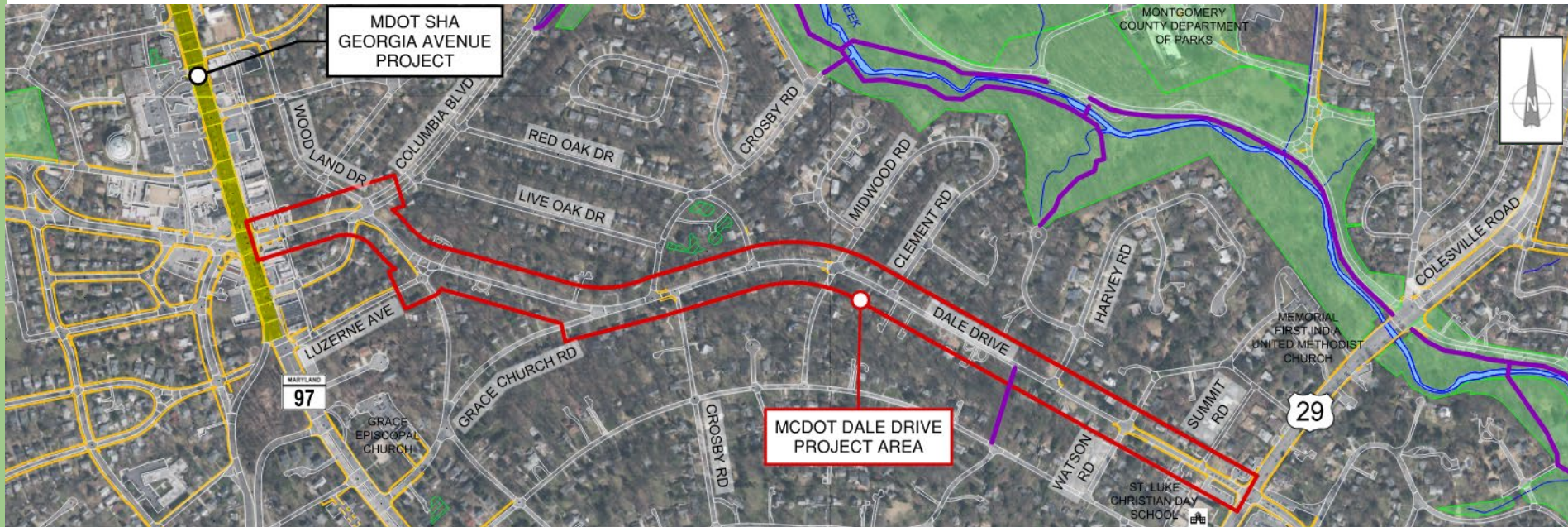
OR

Online comment form on the project website
<https://www.montgomerycountymd.gov/dot-dte/projects/daledr/index.html>

NOVEMBER 2021



Shared Use Path on Dale Drive Georgia Avenue to Colesville Road



MAP LEGEND	
STUDY AREA	PARK
STREAMS / WATERWAYS	FOREST CONSERVATION AREA
EXISTING TRAILS	SCHOOL
EXISTING SIDEWALK	



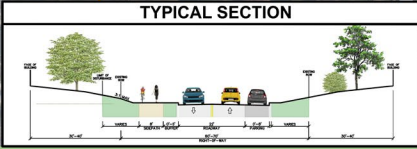
DALE DRIVE SHARED USE PATH & SAFETY IMPROVEMENTS



DALE DRIVE SHARED USE PATH & SAFETY IMPROVEMENTS



NOTE:
ALL EXISTING DRIVEWAY
ACCESS WILL REMAIN



DISPLAY B: PLAN VIEW

LEGEND	
	PROPOSED SHARED USE PATH
	PROPOSED CONCRETE DRIVEWAYS
	PROPOSED CONCRETE SIDEWALK
	PROPOSED FULL DEPTH PAVEMENT
	PROPOSED PAVEMENT OVERLAY
	PROPOSED PAVEMENT REMOVAL
	FOREST CONSERVATION EASEMENT
	PROPERTY LINE
	LIMIT OF DISTURBANCE
	PROPOSED RETAINING WALL
	EXISTING TRAIL FACILITIES
	EXISTING TRAFFIC SIGNAL
	POTENTIAL FIRE HYDRANT CONFLICT
	POTENTIAL UTILITY POLE CONFLICT



NOVEMBER 2021



DISPLAY B

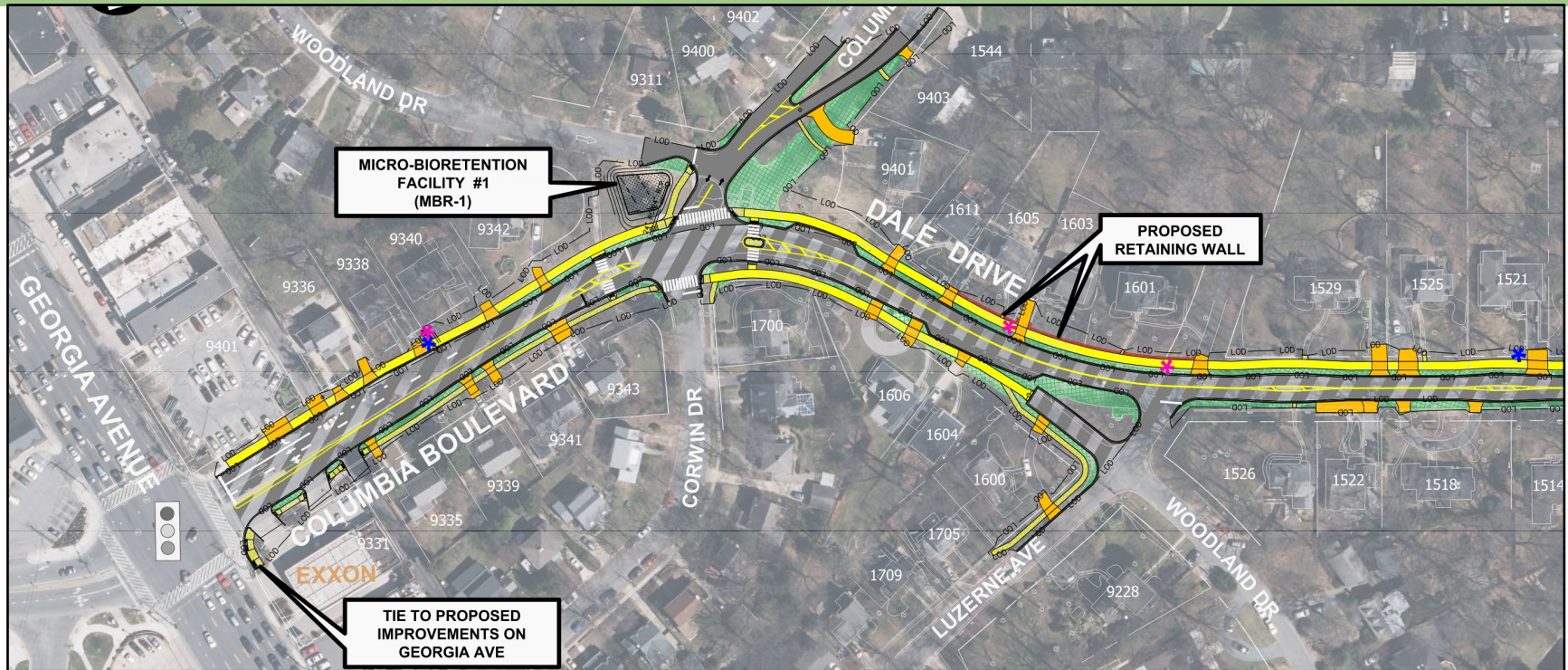
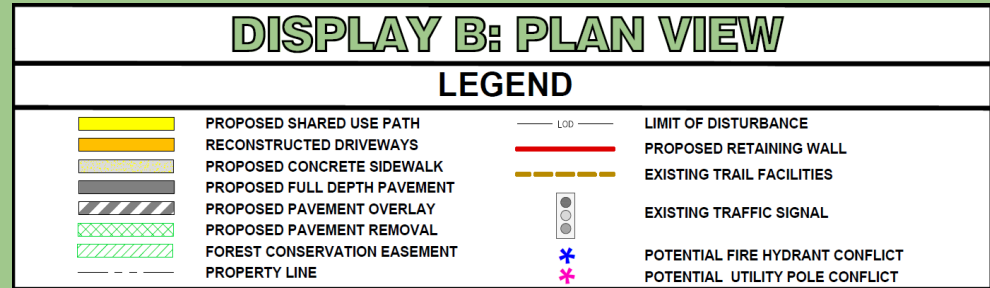
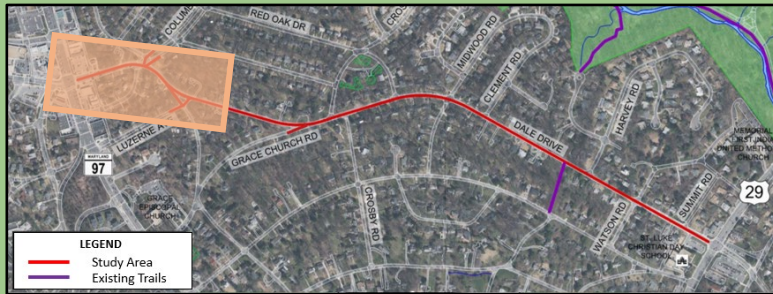
NOVEMBER 2021



DALE DRIVE SHARED USE PATH & SAFETY IMPROVEMENTS



From Georgia Avenue to East of Luzerne Avenue



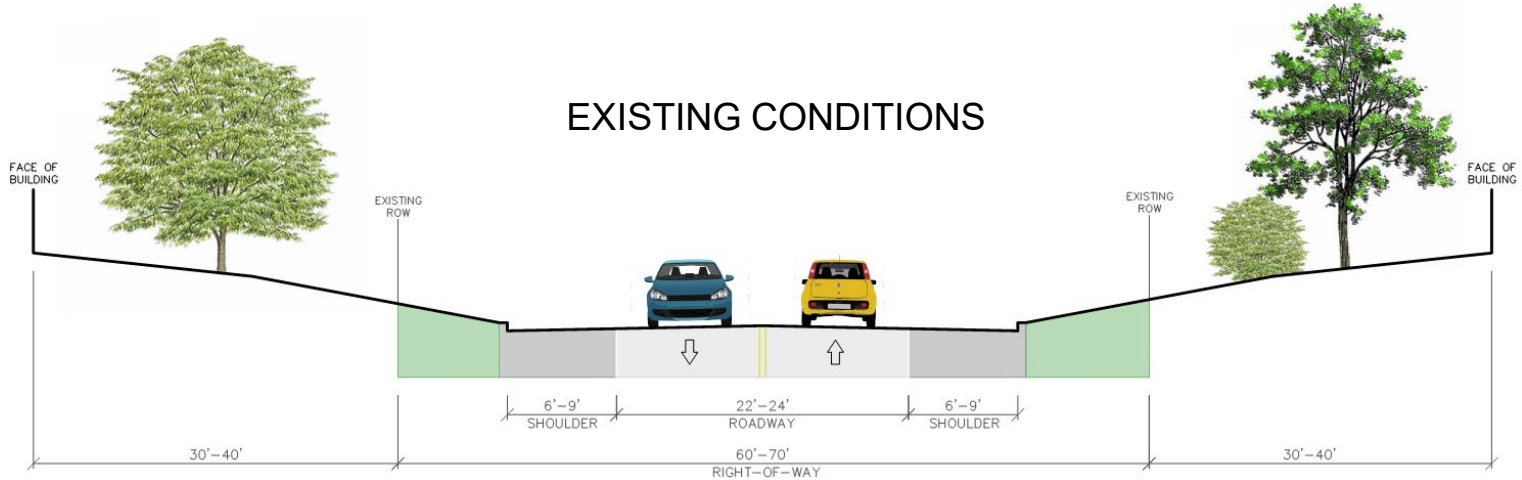
DISPLAY B-1

NOVEMBER 2021

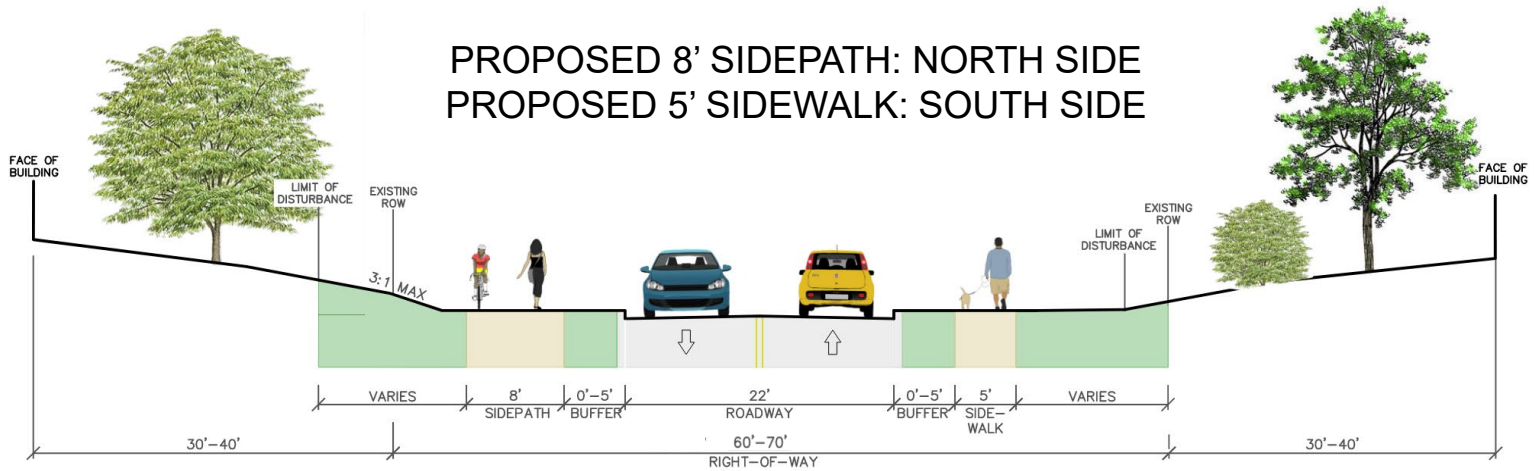


TYPICAL SECTIONS: GEORGIA AVENUE TO CORWIN DRIVE

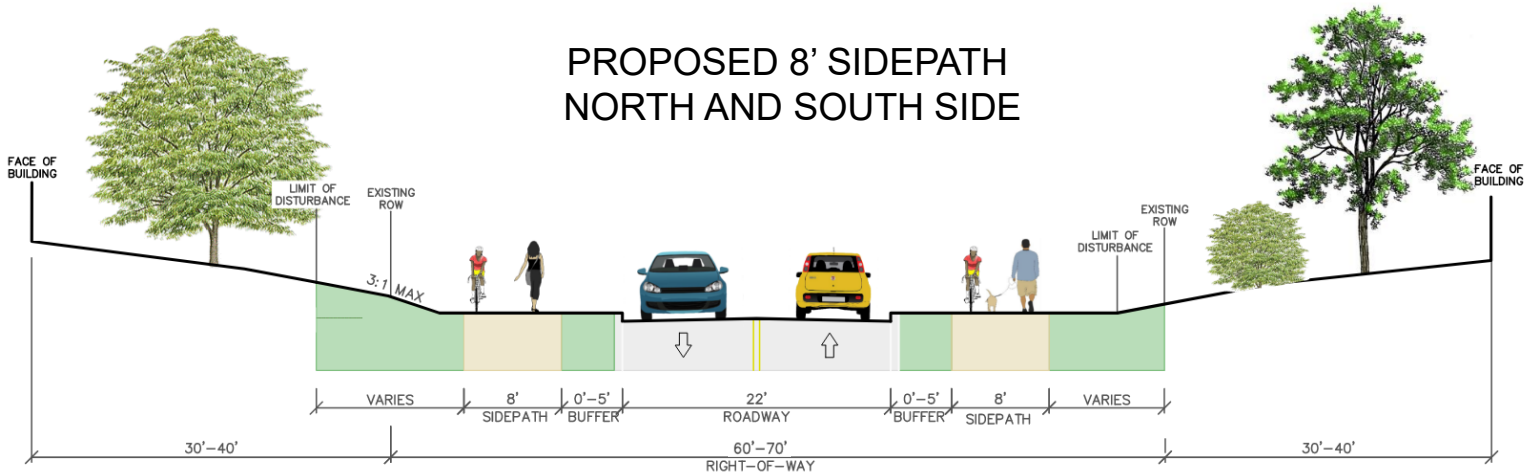
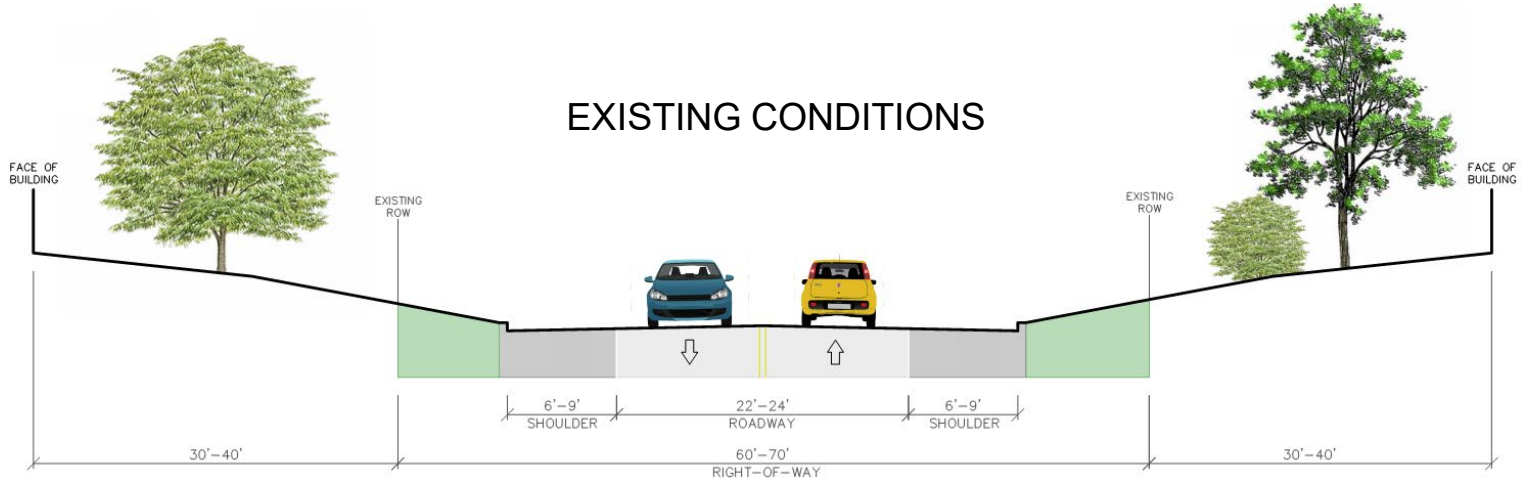
EXISTING CONDITIONS



PROPOSED 8' SIDEPATH: NORTH SIDE PROPOSED 5' SIDEWALK: SOUTH SIDE



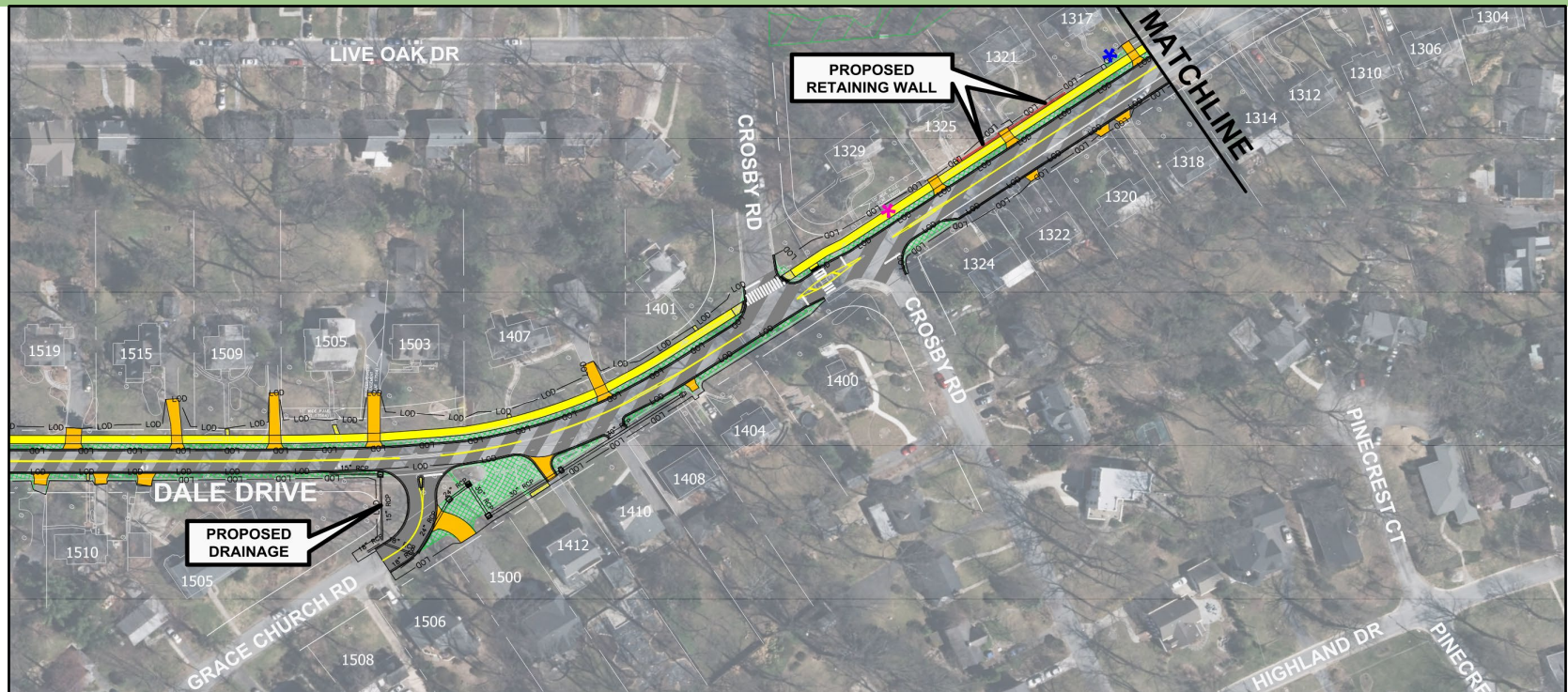
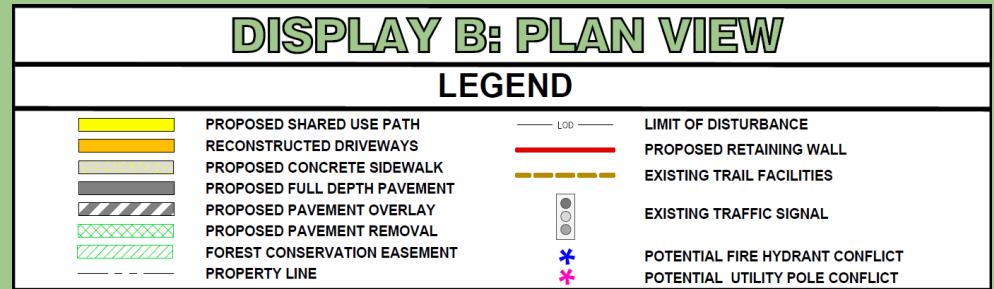
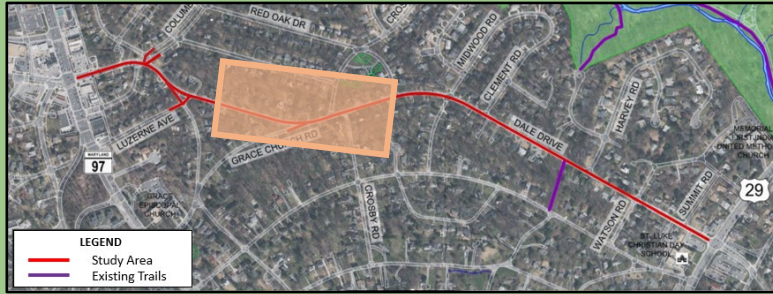
TYPICAL SECTIONS: CORWIN DRIVE TO LUZERNE AVENUE



DALE DRIVE SHARED USE PATH & SAFETY IMPROVEMENTS



West of Grace Church Road to West of Red Oak Drive



DISPLAY B-2

NOVEMBER 2021



DALE DRIVE SHARED USE PATH & SAFETY IMPROVEMENTS



West of Red Oak Drive to West of Harvey Road



DISPLAY B: PLAN VIEW

LEGEND

	PROPOSED SHARED USE PATH		LIMIT OF DISTURBANCE
	RECONSTRUCTED DRIVEWAYS		PROPOSED RETAINING WALL
	PROPOSED CONCRETE SIDEWALK		EXISTING TRAIL FACILITIES
	PROPOSED FULL DEPTH PAVEMENT		EXISTING TRAFFIC SIGNAL
	PROPOSED PAVEMENT OVERLAY		POTENTIAL FIRE HYDRANT CONFLICT
	PROPOSED PAVEMENT REMOVAL		POTENTIAL UTILITY POLE CONFLICT
	FOREST CONSERVATION EASEMENT		
	PROPERTY LINE		



DISPLAY B-3

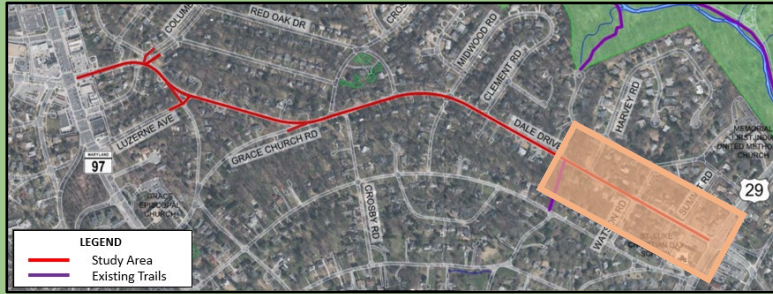
NOVEMBER 2021



DALE DRIVE SHARED USE PATH & SAFETY IMPROVEMENTS



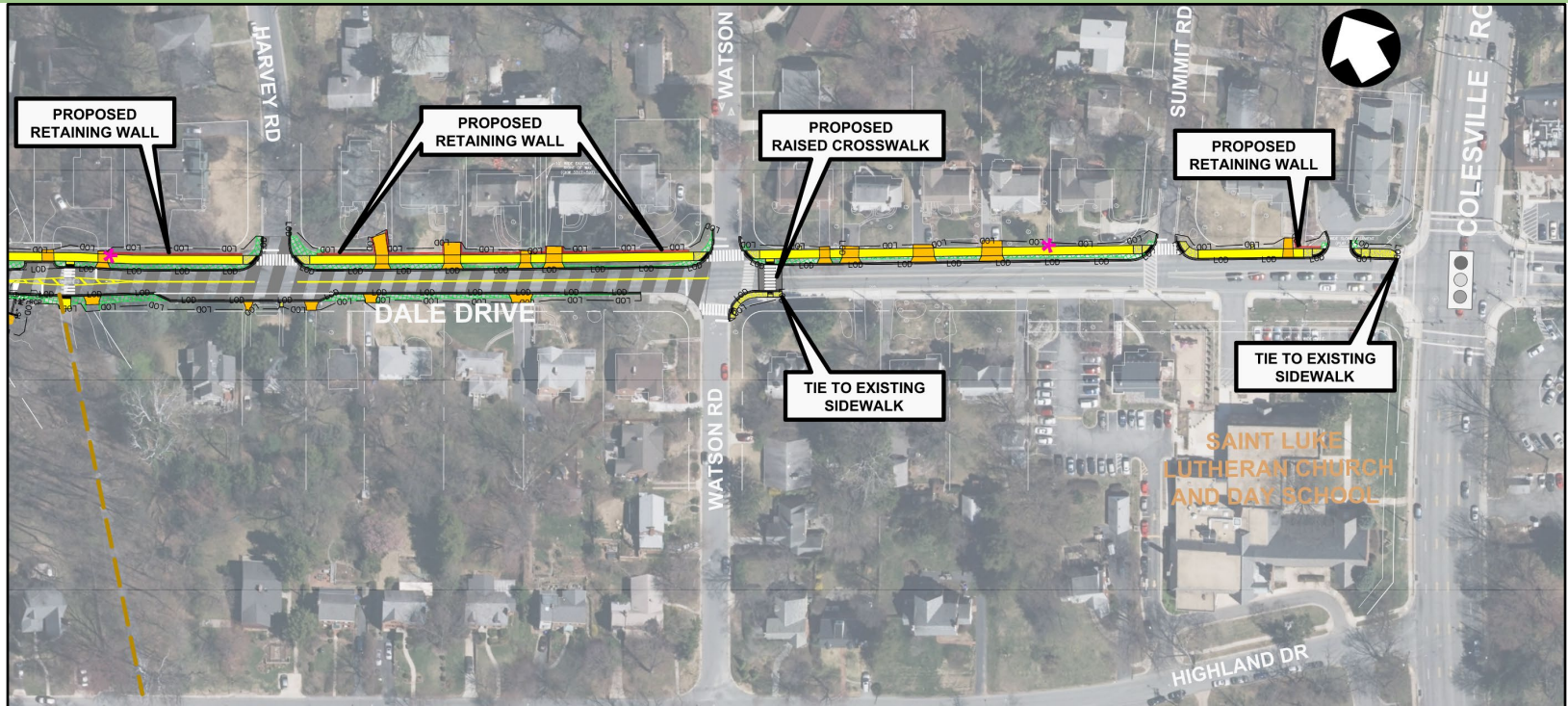
West of Harvey Road to Colesville Road



DISPLAY B: PLAN VIEW

LEGEND

	PROPOSED SHARED USE PATH		LIMIT OF DISTURBANCE
	RECONSTRUCTED DRIVEWAYS		PROPOSED RETAINING WALL
	PROPOSED CONCRETE SIDEWALK		EXISTING TRAIL FACILITIES
	PROPOSED FULL DEPTH PAVEMENT		EXISTING TRAFFIC SIGNAL
	PROPOSED PAVEMENT OVERLAY		POTENTIAL FIRE HYDRANT CONFLICT
	PROPOSED PAVEMENT REMOVAL		POTENTIAL UTILITY POLE CONFLICT
	FOREST CONSERVATION EASEMENT		
	PROPERTY LINE		

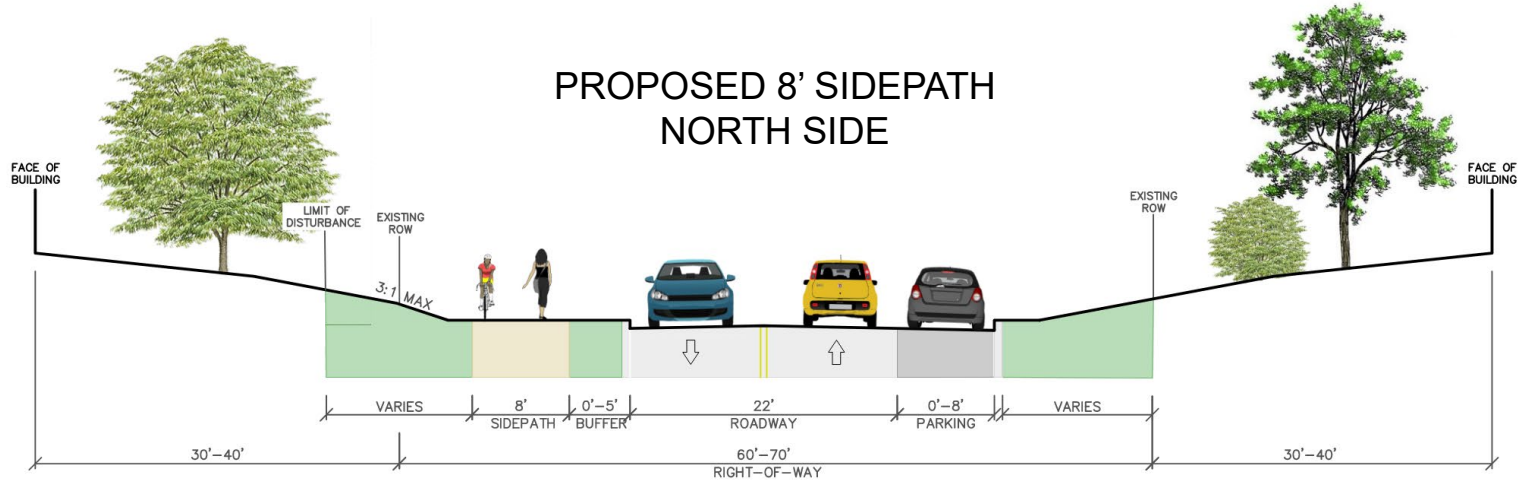
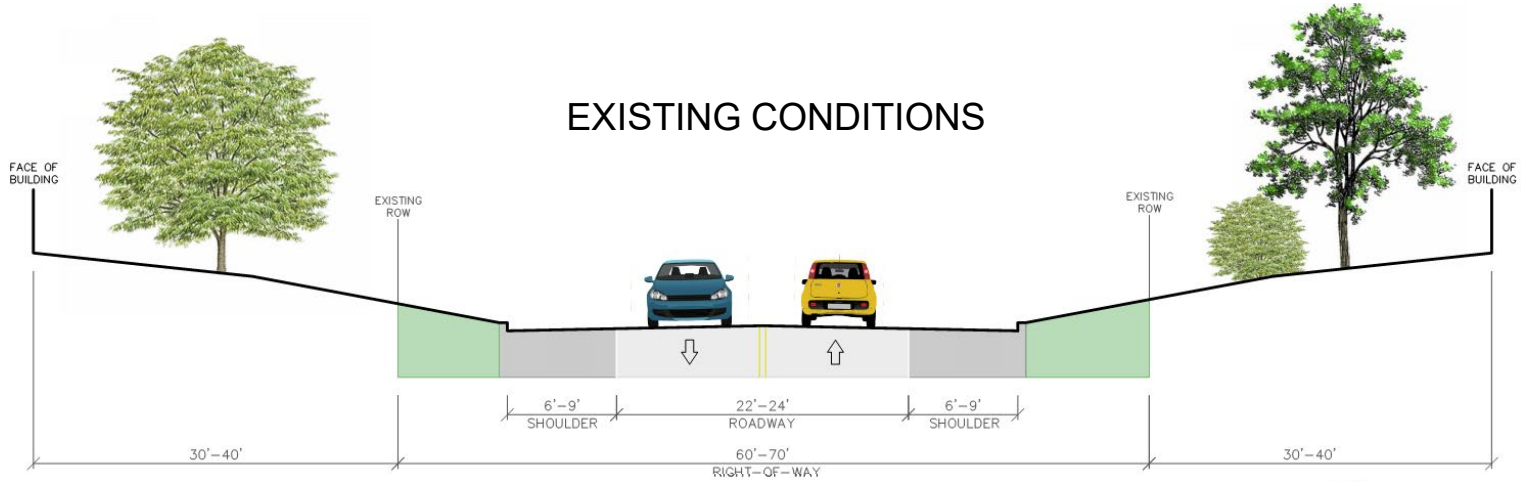


DISPLAY B-4

NOVEMBER 2021



TYPICAL SECTIONS: LUZERNE AVENUE TO COLESVILLE ROAD



RETAINING WALL EXAMPLE



Needwood Road Bike Path

COST AND ASSESSMENTS

- Total project cost currently estimated at \$10,215,000
- Project Cost includes:
 - Engineering
 - Land Acquisition (Permanent and Temporary Construction Easements)
 - Site Improvements
 - Utility Relocations
 - Construction
- No properties are considered to be specially benefitted by the proposed improvement

NOVEMBER 2021



PUBLIC RECORD

- Exhibits included in the Public Record Binder:
 1. Office of Management & Budget; Dale Drive Shared Use Path & Safety Improvements P502109
 2. Dale Drive Pedestrian Facility 70% Design Plans
 3. Written Testimony regarding the Dale Drive Pedestrian Facility proposal provided prior to and after this Public Hearing
 4. Washington Times newspaper and online advertisement proof
 5. List of Attendees, to be added following this Public Hearing
 6. Hearing Transcript; to be added following this Public Hearing
- Project related data and files:
 - Available on project website
 - Available to the public until the record for this Public Hearing is officially closed

NOVEMBER 2021



PUBLIC TESTIMONY

- Cameras and microphones have been turned off to reduce the bandwidth of the meeting
- Verbal Testimony
 - Those who wish to testify will be asked to “raise hand” and called on in the order their hands are raised.
 - You will be unmuted when it is your turn to speak
 - **Once given speaking rights, please clearly provide your name and address for the record prior to beginning your testimony**
- Written Testimony
 - Will be considered with the same weight as oral testimony and can be submitted via:
 - E-mail: Angel.Cheng@montgomerycountymd.gov
 - Online comment form on the project website:
<https://www.montgomerycountymd.gov/dot-dte/projects/daledr/index.html>

NOVEMBER 2021



QUESTION AND ANSWER

- Cameras and microphones have been turned off to reduce the bandwidth of the meeting
- To ask a Question
 - Click on the status icon on the top menu bar that looks like a person with their hand raised or;
 - Type your question into the chat box on the bottom right corner of the screen

NOVEMBER 2021



THANK YOU FOR ATTENDING

The Public Hearing Record will remain open for two weeks to allow any person an opportunity to have their comments included.

Official Closing Date for Comments and Testimony
Wednesday, December 1, 2021
At 7:00 PM

Submissions can be made via:

E-mail

Angel.Cheng@montgomerycountymd.gov

OR

Online comment form on the project website
<https://www.montgomerycountymd.gov/dot-dte/projects/daledr/index.html>

NOVEMBER 2021

