

Replacement of Dennis Avenue Bridge No. M-0194 over Sligo Creek Tributary (Wheaton Branch)



**North Elevation
(looking downstream)**



**South Elevation
(looking upstream)**



**Prestressed Concrete Voids Slab Beams
Spalls, Cracks and Exposed Reinforcement**

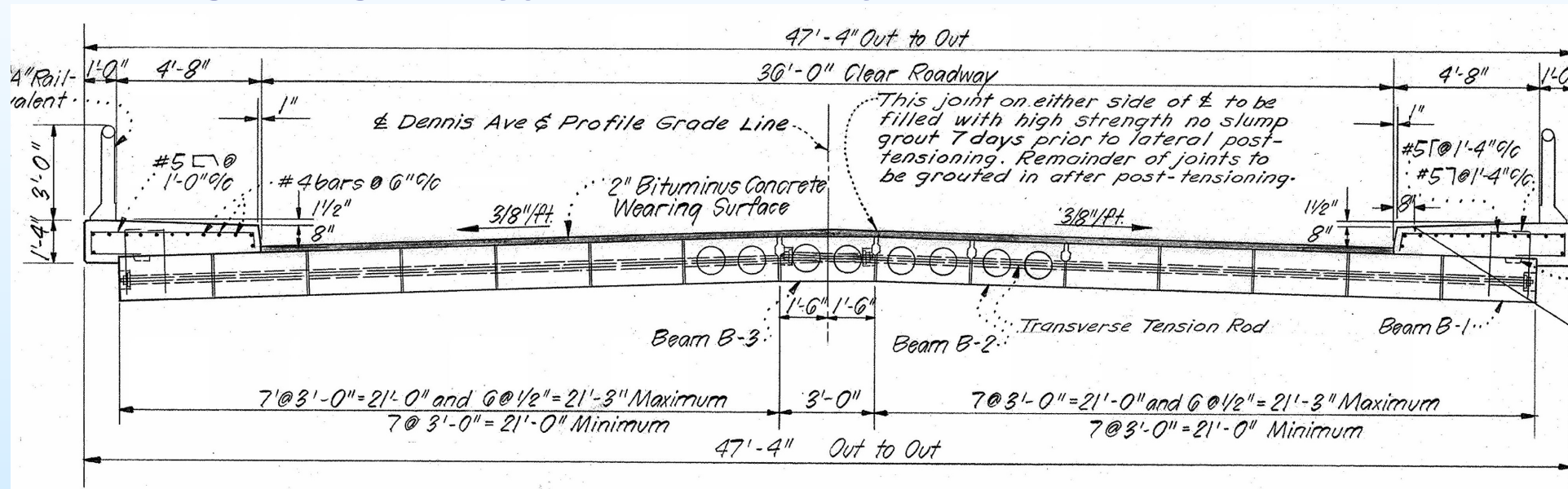
- ◆ Constructed in 1961 (63 years old)
- ◆ Single Span bridge with prestressed concrete voided slab beams
- ◆ 29'-0" Clear span between abutment faces
- ◆ Cantilever concrete abutments and wingwalls on concrete piles

EXISTING BRIDGE

Display B-1

Replacement of Dennis Avenue Bridge No. M-0194 over Sligo Creek Tributary (Wheaton Branch)

Existing Bridge – Typical Roadway Section



- ◆ Through Lane (two lanes) : **18'-0"**
- ◆ Clear Roadway Width : **36'-0"**
- ◆ Sidewalk (both sides) : **4'-8"**
- ◆ Barrier (both sides) : **1'-0"**
- ◆ Out-to-out Structure : **47'-4"**

EXISTING BRIDGE

Display B-2

Replacement of Dennis Avenue Bridge No. M-0194 over Sligo Creek Tributary (Wheaton Branch)

Existing Dennis Avenue Bridge and Wheaton Branch – Bird’s Eye View Looking North

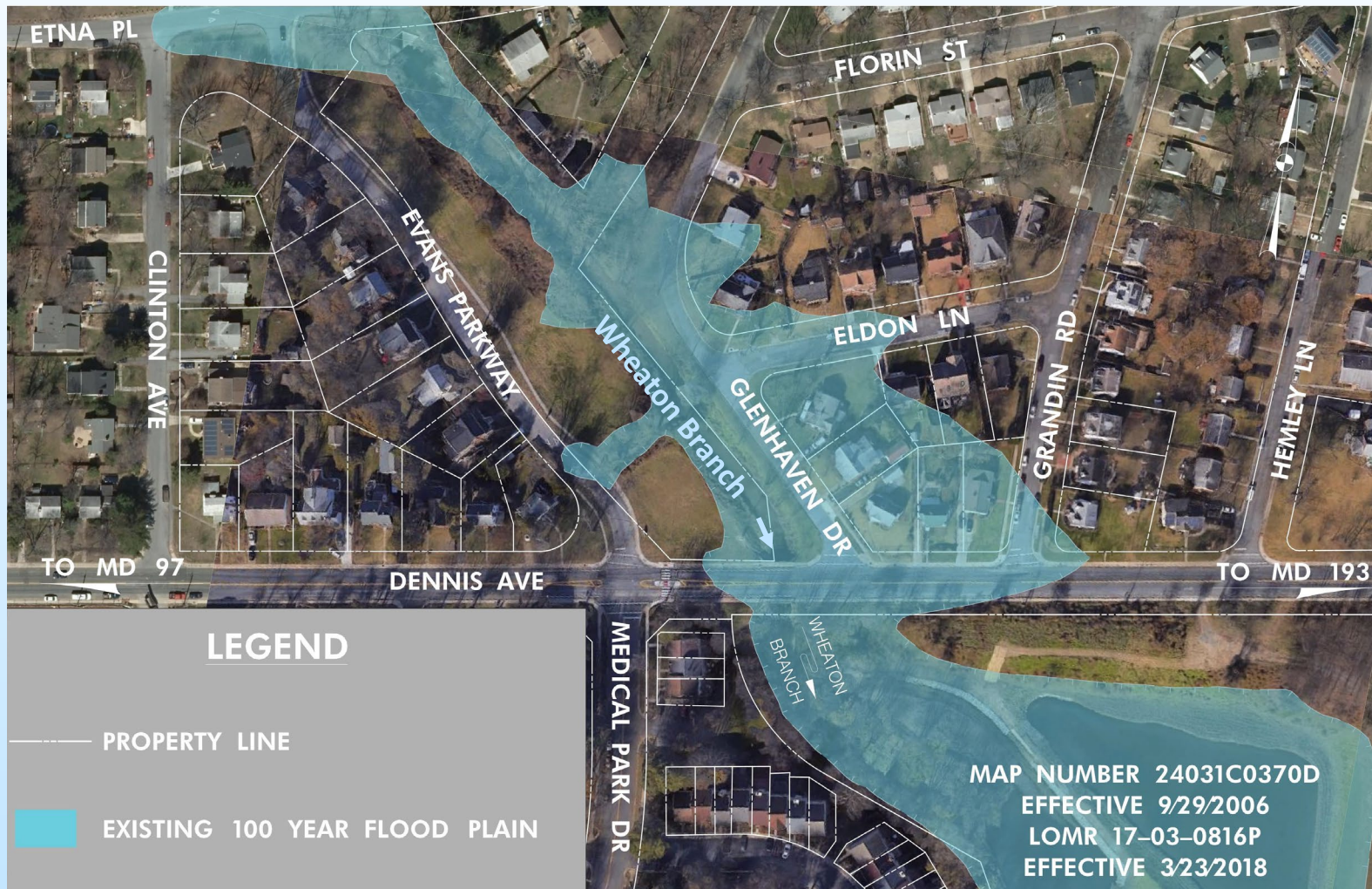


EXISTING BRIDGE

Display B-3

Replacement of Dennis Avenue Bridge No. M-0194 over Sligo Creek Tributary (Wheaton Branch)

Existing 100-Year Floodplain



2010 Storm Event



EXISTING BRIDGE

Display B-4